

DEPARTMENT OF SCIENCE AND TECHNOLOGY

The Department of Science and Technology (DOST) logo consists of four tangential circles cut away by each of their perpendicular radii to form a square at the center. The four circles project an image of movement to signify progress through S&T. Inside the square is a four-pointed star that symbolizes scientific creativity. The official colors of the DOST are black (for the unknown), white (for truth and enlightenment), and blue (for progress).

Legal Basis

- **Republic Act No. 2507** (June 13, 1958), Science Act of 1958, originally established the Department of Science and Technology (DOST) as the National Science and Development Board (NSDB).
- **Executive Order No. 784** (March 17, 1982) reconstituted/elevated the NSDB into the National Science and Technology Authority (NSTA).
- **Executive Order No. 128** (January 30, 1987) elevated the NSTA into a cabinet-level agency, the Department of Science and Technology.

Mandate

The Department of Science and Technology (DOST) provides direction, leadership, and coordination of all scientific and technological efforts/activities in the Philippines and ensures that the results therefrom are geared and utilized in areas of maximum economic and social benefits for the people.

DOST - Office of the Secretary

LOGICAL FRAMEWORK (DOST-OSEC)

Societal Goal

Sustainable Economic Growth towards Poverty Alleviations

Sectoral Goal

Knowledge, science and technology for productivity, economic growth and job creation

Organizational Outcomes

Knowledge
and Technologies
Diffused

New Knowledge
and Technologies
Generated

S&T Human
Resources
Developed

Quality S&T
Services Provided

Major Final Outputs

S&T Policy Services

S&T Fund Management
Services

Regional S&T Services

P/A/Ps

General management and supervision

Development, coordination, monitoring and evaluation of national S&T policies and programs

International/local S&T networking and other related activities

Management information and statistical services

Conduct of S&T conferences and exhibitions

Operation and maintenance of the National Committee on Biosafety of the Phils. (E.O. No. 430)

General management and supervision

Research and development and research capability building in priority areas identified as strategic to national development

Strengthening of the national technology innovation system

Promotion of science and technology

Technology incubation for commercialization

Extension and enhancement of science and technology activities

Performance Indicators

Number of policy instruments against number adopted by stakeholders

Number of project proposals reviewed/ appraised against number of projects approved for funding

- R & D
- Techno Transfer
- Human Resources
- Technology Commercialization

Amount of funds released to approved projects

Number of completed projects subjected to impact evaluation

Clients served per type of S&T service

- Technology acquisition & Upgrading
- Testing & Calibration
- Packaging & Labeling
- Consultancy Services

Number of technology transfer agreements/licenses

Client satisfaction feedback

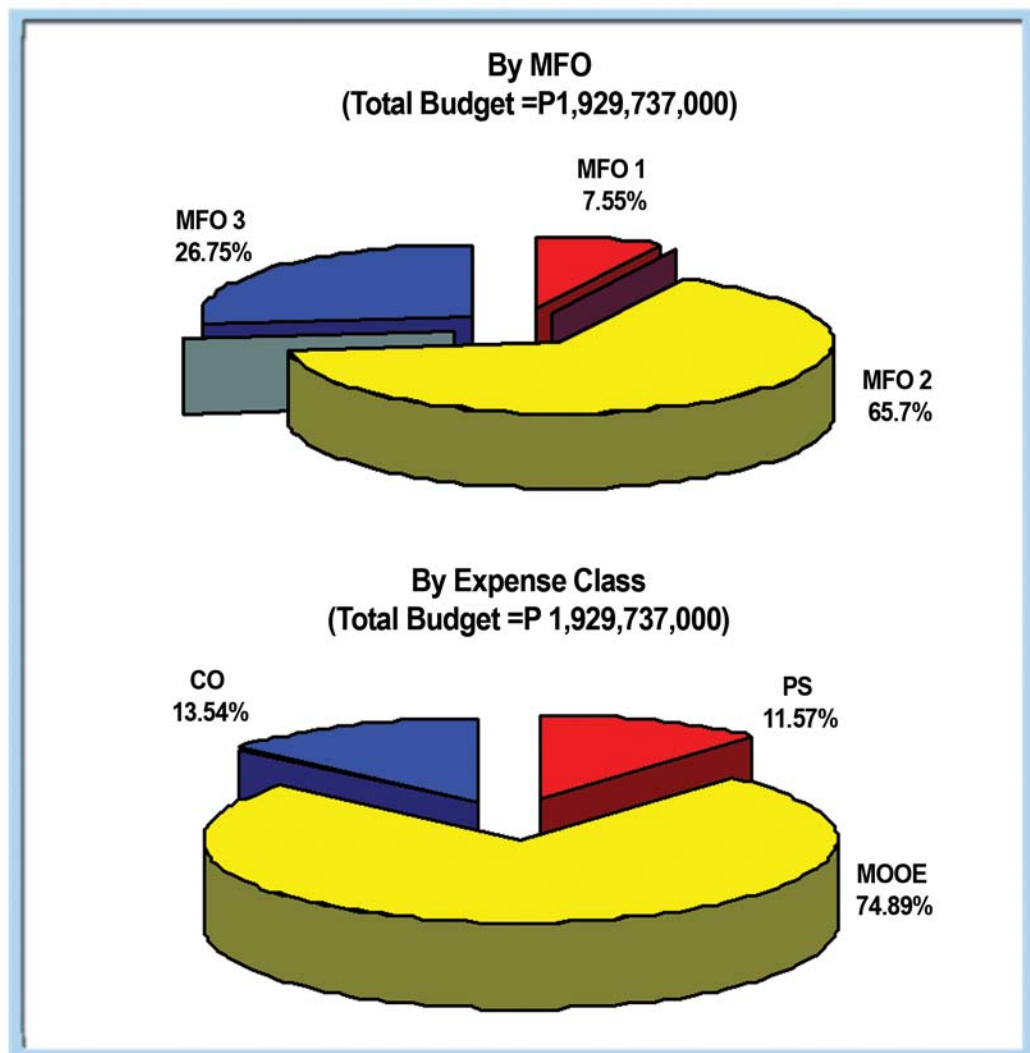
PERFORMANCE MEASURES AND TARGETS

[illegible]

FY 2008 MFO BUDGET

By MFO/By Expense Class (In thousand pesos)

Particulars	PS	MOOE	CO	TOTAL	% Share
MFO:					
S&T Policy Services	79,318	34,617	31,780	145,715	7.55%
MFO:					
S&T Fund Management Services	1,009	1,266,809		1,267,818	65.70%
MFO:					
Regional S&T Services	142,942	143,681	229,581	516,204	26.75%
TOTAL	223,269	1,445,107	261,361	1,929,737	100.00%
% Share	11.57%	74.89%	13.54%	100.00%	



Advanced Science and Technology Institute



The Advanced Science and Technology Institute (ASTI) logo reflects the research areas of Information and Communications Technology (ICT) and Microelectronics. The network cable at the center symbolizes communications and transfer of information. The circuit traces and pins of a chip module symbolize microelectronics. The exclamation point at the heart of the logo depicts innovative ideas.

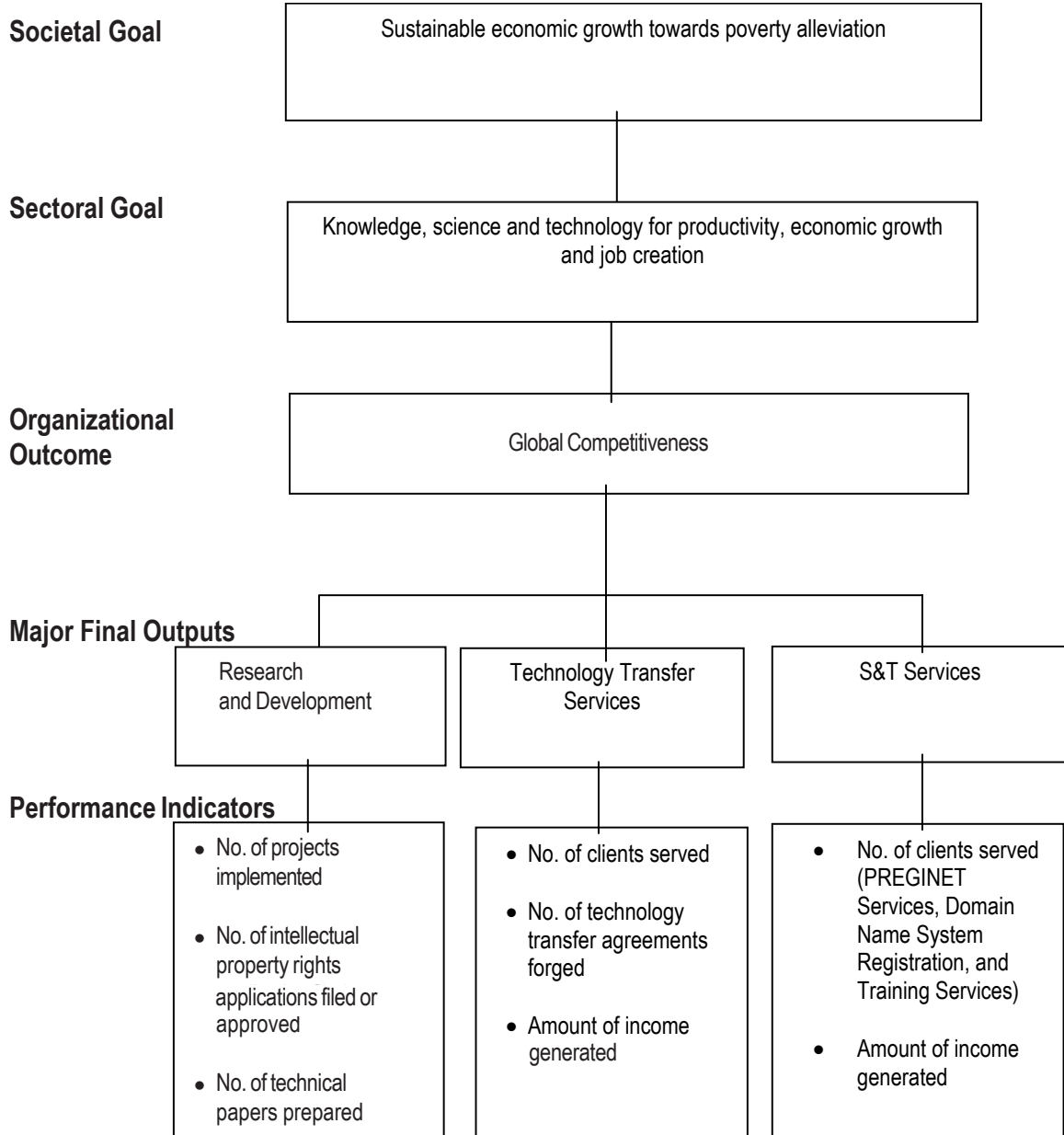
Legal Basis

Executive Order No. 128 (January 30, 1987) reorganized the National Science and Technology Authority (NSTA) into the Department of Science and Technology (DOST) and retained the Advanced Science and Technology Institute as one of the Department's R & D institutes.

Mandate

The Advanced Science and Technology Institute (ASTI) undertakes long-term researches to strengthen and modernize science and technology infrastructure; and conducts research and development work in advanced fields of studies, including Microelectronics. It complements the overall endeavor in the scientific field with intensive activities in the computer and information technologies.

LOGICAL FRAMEWORK (ASTI)



PERFORMANCE MEASURES AND TARGETS

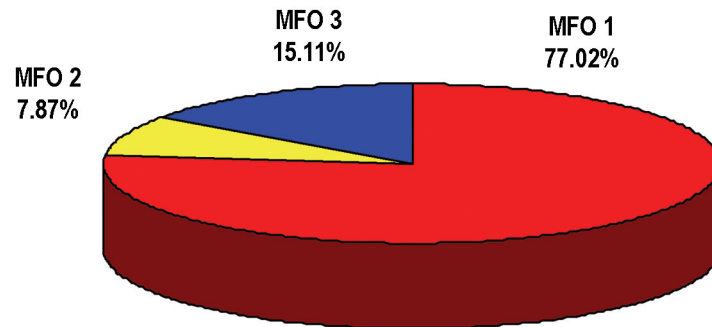
Particulars	FY 2007		FY 2008	
	Target	Amount	Target	Amount
MFO 1: Research and Development		22,020,663		34,459,625
Performance Indicators:				
No. of projects implemented	15		16	
No. of intellectual property filed or approved	2		3	
No. of technical papers prepared	2		3	
MFO 2: Technology Transfer Services		2,643,948		520,956
Performance Indicators:				
No. of clients served	2,400		2,500	
No. of technology transfer agreements	10		12	
Amount of income generated	100,000		125,000	
MFO 3: S&T Services		6,034,389		6,760,419
Performance Indicators:				
No. of clients served (PREGINET Services, Domain Name System Registration, and Training Services)	2,100		2,200	
Amount of income generated	900,000		1,000,000	
TOTAL		30,699,000		44,741,000

FY 2008 MFO BUDGET

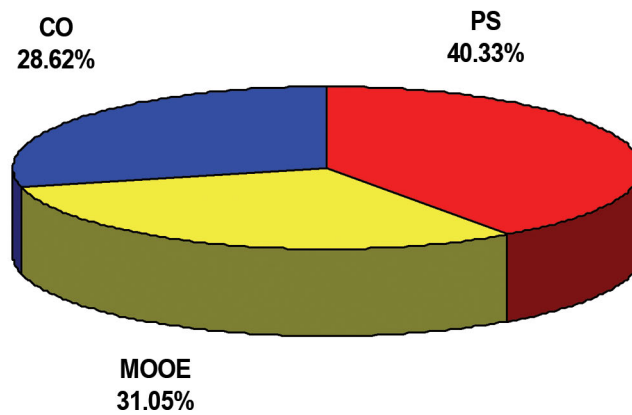
By MFO/By Expense Class

Particulars	PS	MOOE	CO	Total	% Share
MFO 1: Research and Development	13,493,926	8,731,699	12,234,000	34,459,625	77.02%
MFO 2: Technology Transfer Services	1,388,242	2,062,714	70,000	3,520,956	7.87%
MFO 3: S & T services	3,161,832	3,098,587	500,000	6,760,419	15.11%
TOTAL	18,044,000	13,893,000	12,804,000	44,741,000	100.00%
% Share	40.33%	31.05%	28.62%	100.00%	

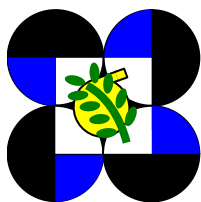
By MFO
(Total Budget = P44,741,000)



By Expense Class
(Total Budget = P44,741,000)



Food and Nutrition Research Institute



The Food and Nutrition Research Institute (FNRI) logo follows the design of its mother department, DOST, logo. The circles, representing an illusion of movement, signify progress through science and technology. They also represent Excellence, Relevance, Cooperation and Cost Effectiveness. The space in the center, where the circles converge, forms a star which is symbolic of scientific productivity. The colors represent the unknown (black), truth and enlightenment (white), and progress (blue). The “*malunggay*” leaves at the center stands for food while the *retort flask* stands for research in food and nutrition.

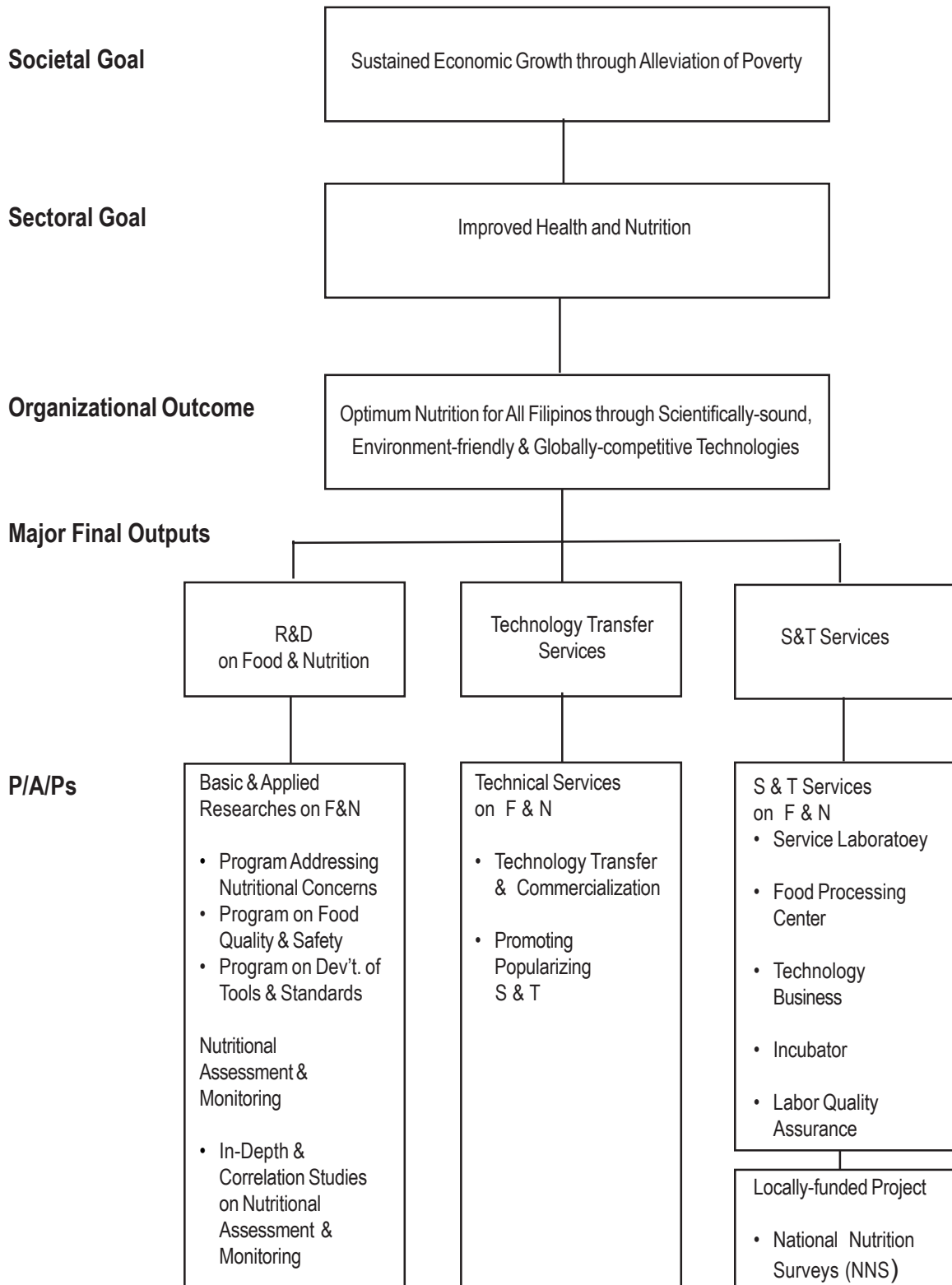
Legal Basis

- **Executive Order No. 94** (July 1, 1947) created the Institute of Nutrition (IN) under the Office of the President as the clearing house of data and information concerning nutrition.
- **Administrative Order No. 81** (January 25, 1949) included in the mandate of IN the conduct of research in the applied science of food and nutrition.
- **Executive Order No. 392** (January 1, 1950) transferred IN to the Department of Health.
- **Republic Act No. 2058** (June 13, 1958) transferred the IN to the newly created National Science and Development Board (NSDB) as the Food and Nutrition Research Center (FNRC) under the National Institute of Science and Technology (NIST).
- **Presidential Decree No. 233** (June 30, 1973) gave FNRC full agency status as a research and development Institute under the NSDB.
- **Presidential Decree No. 733** (June 25, 1975) renamed FNRC into Food and Nutrition Research Institute (FNRI).
- **Executive Order No. 784** (March 17, 1982) designated FNRI as a line agency under the National Science and Technology Authority (NSTA) from the reorganized NSDB.
- **Executive Order No. 128** (January 30, 1987) redefined the functions of FNRI upon reorganization of NSTA to the Department of Science and Technology (DOST).

Mandate

The Food and Nutrition Research Institute (FNRI) undertakes researches that define the citizenry's nutritional status, with reference particularly to the malnutrition problem, its causes and effects; develops and recommends policy options, strategies, programs and projects which address the malnutrition problem for implementation by appropriate agencies. It disseminates its research findings and recommendations to relevant end-users.

LOGICAL FRAMEWORK (FNRI)



PERFORMANCE MEASURES AND TARGETS

Particulars	FY 2007		FY 2008	
	Target	Amount	Target	Amount
MFO 1		49,534		62,419
R&D on Food & Nutrition (F&N)				
No. of R&D projects implemented	32		25	
No. of scientific/technical papers prepared	20		20	
No. of scientific/technical papers published in an ISI accredited journals	1		2	
No. of IPs applied/approved	2		2	
MFO 2		6,684		8,182
Technology Transfer Services				
No. of clients served				
RO supported	-		100	
RDIs direct clients	350		400	
No. of technology transfer agreements/ licensing made	3		3	
MFO 3		16,934		*67,320
S&T Services				
No. of technical/analytical services rendered	200		250	
No. of clients served	140		150	
Income generated ('000)	900.0		930.0	
Other services				
No. of clients served	2,350		2,500	
Income generated ('000)	240.0		240.0	
TOTAL		23,618		137,921

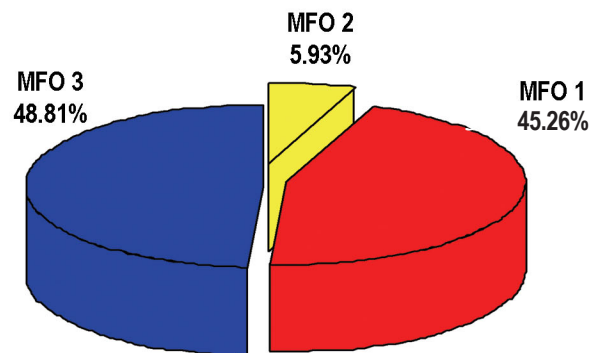
* 60M - Locally Funded

FY 2008 MFO BUDGET

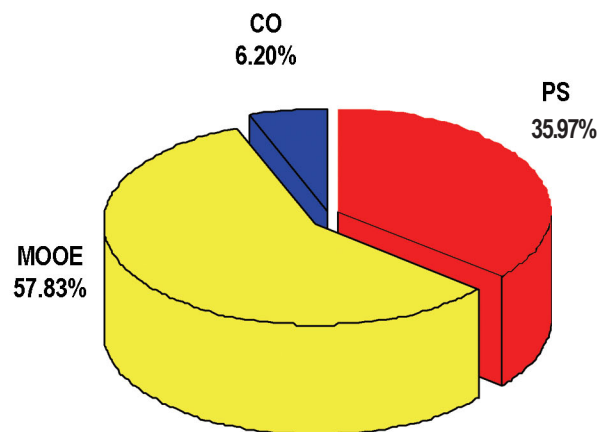
By MFO/By Expense Class

Particulars	PS	MOOE	CO	Total	% Share
MFO 1 Research and Development on Food and Nutrition	41,188	13,405	7,826	62,419	45.26%
MFO 2 Technology Transfer Services	4,293	3,220	669	8,182	5.93%
MFO 3 Science and Technology Services	4,166	63,154	-	67,320	48.81%
Total	49,647	79,779	8,495	137,921	100.00%
% Share	35.97%	57.83%	6.20%	100.00%	

By MFO
(Total Budget = P137,921,000)



By Expense Class
(Total Budget = P137,921,000)



Forest Products Research and Development Institute

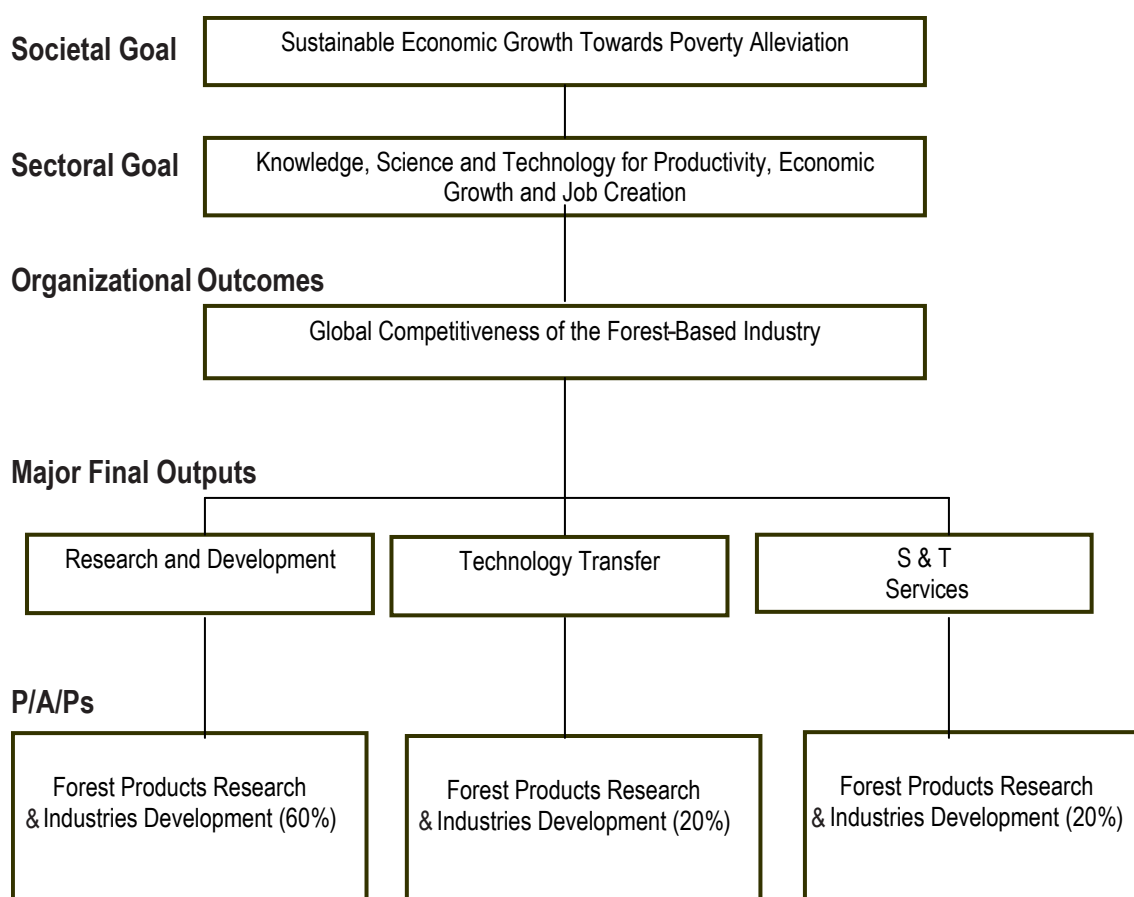
Legal Basis

- **Executive Order No. 257** (1957) transferred the Forest Products Research Institute (FPRI) from the Bureau of Forestry of the Department of Agriculture and Natural Resources to the University of the Philippines (as Forest Products Laboratory).
- **Republic Act No. 5526** (June 21, 1969) created the Forest Products Research and Development Commission (FORPRIDECOM) under the National Science Development Board (NSDB).
- **Executive Order No. 784** (March 17, 1982) renamed the NSDB to National Science and Technology Authority (NSTA) and the FORPRIDECOM became the Forest Products Research and Development Institute (FPRDI).
- **Executive Order No. 128** (January 30, 1987) reorganized the NSTA into the Department of Science and Technology (DOST), with the FPRDI being retained under it.

Mandate

The Forest Products Research and Development Institute (FPRDI) conducts research and development on wood and non-wood forest products. It is the center for applied technologies on the utilization of forest-based products in the country.

LOGICAL FRAMEWORK (FPRDI)



PERFORMANCE MEASURES AND TARGETS

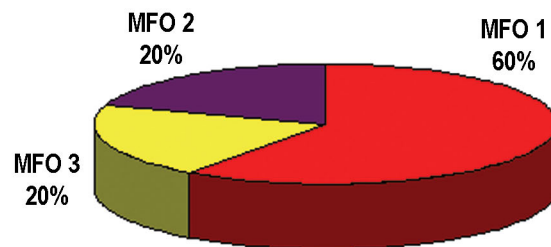
Particulars	FY 2007		FY 2008	
	Target	Amount	Target	Amount
MFO 1		44,346		56,638
Research and Development				
Performance Indicators:				
No. of technical papers prepared for publication	12		12	
No. of technical papers published in ISI accredited Journals	-		2	
No. of Intellectual Property filed and approved	1		1	
MFO 2		16,282		18,879
Technology Transfer				
Performance Indicators:				
No. of clients served by type of service	1835		1300	
Consultancy	500		680	
Installation (equipment, facilities, process, etc.)	15		20	
Training	400		600	
Income generated by type of service	131		131	
Consultancy	160		160	
Installation	100		100	
Training	15		15	
No. of techno transfer agreements signed	10		10	
Customer Satisfaction Feedback	85		90	
MFO 3		16,282		18,879
S & T Services				
Performance Indicators:				
No. of clients served by type of service				
Testing	140		300	
Other services	50		60	
Income generated by type of service	1,200		1,200	
Testing	1,200		1,200	
Other services				
Customer Satisfaction Feedback	85		90	
TOTAL		73,910		94,396

FY 2008 MFO BUDGET

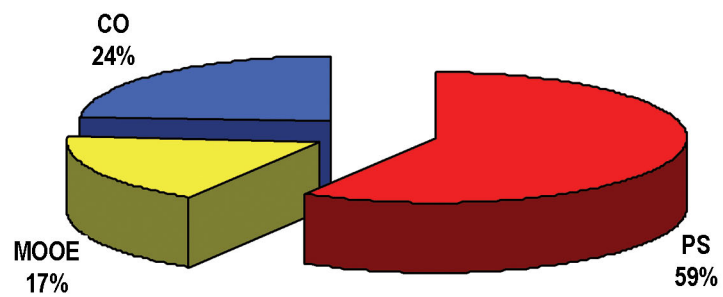
By MFO/By Expense Class

Particulars	PS	MOOE	CO	Total	% Share
MFO 1	33,231	9,857	13,550	56,638	60%
Research and Development					
MFO 2	11,077	3,286	4,516	18,879	20%
Technology Transfer					
MFO 3	11,077	3,286	4,516	18,879	20%
S & T Services					
Total	55,385	16,429	22,582	94,396	
% Share	59%	17%	24%		100%

By MFO
(Total Budget = P94,396,000)



By Expense Class
(Total Budget = P94,396,000)



Industrial Technology Development Institute



The Industrial Technology Development Institute (ITDI) logo features two gears in a propelling movement at the heart of the DOST logo. The small gear represents ITDI's S & T efforts that complement the needs of the big gear representing Industry. Without the cogs that fit, and needs that reciprocate, there can be no movement. The logo illustrates the ITDI's motto of "Turning the Wheels of Industry thru Science and Technology," shortened to "Our Business is Industry."

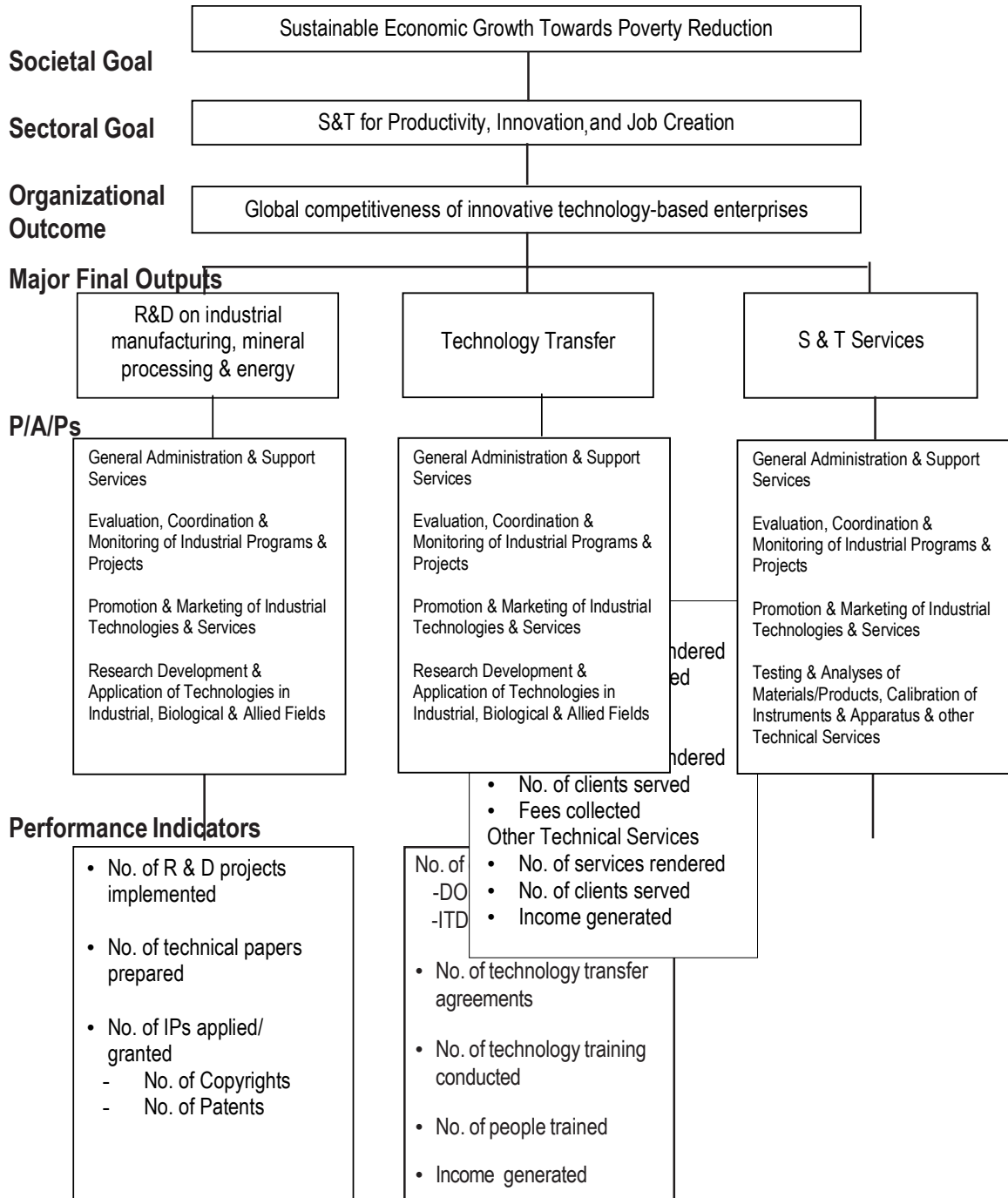
LEGAL BASIS

- **Philippine Commission Act No. 156** (July 1, 1901), created the Bureau of Government Laboratories (BGL).
- **Philippine Commission Act No.1407** (1905) reorganized the BGL into the Bureau of Science (BS).
- **Executive Order No. 94** (1947) transformed the BS into the Institute of Science (IS).
- **Executive Order No. 392** (1951) renamed IS into the Institute of Science and Technology (IST).
- **Republic Act No. 1606** (1956) established the National Science Board (NSB), with IST renamed to National Scientific and Industrial Research Institute (NSIRI) and placed under the supervision of NSB.
- **Republic Act No. 1067 (1958)**, the Magna Carta of Philippine Science, reconstituted the NSB as the National Science Development Board (NSDB), with NSRI becoming the National Institute of Science and Technology (NIST) under the supervision of NSDB.
- **Executive Order No. 784** (1982) reorganized the NSDB into the National Science and Technology Authority (NSTA), with NIST being renamed Industrial Technology Development Institute (ITDI).
- **Executive Order No. 128** (January 30, 1987) reorganized NSTA into the Department of Science and Technology (DOST) and mandated the ITDI to undertake, among others, applied research and development in the field of industrial manufacturing, mineral processing, and energy.

Mandate

The Industrial Technology Development Institute (ITDI) undertakes technical services such as, but not limited to, standards, analytical and calibration services need by industry. It is responsible for the transfer of research results directly to end-users or via linkages with other government agencies. In the course of fulfilling these responsibilities, the ITDI conducts training and provides technical advisory and consultancy services to industry clientele and end-users.

LOGICAL FRAMEWORK (ITDI)



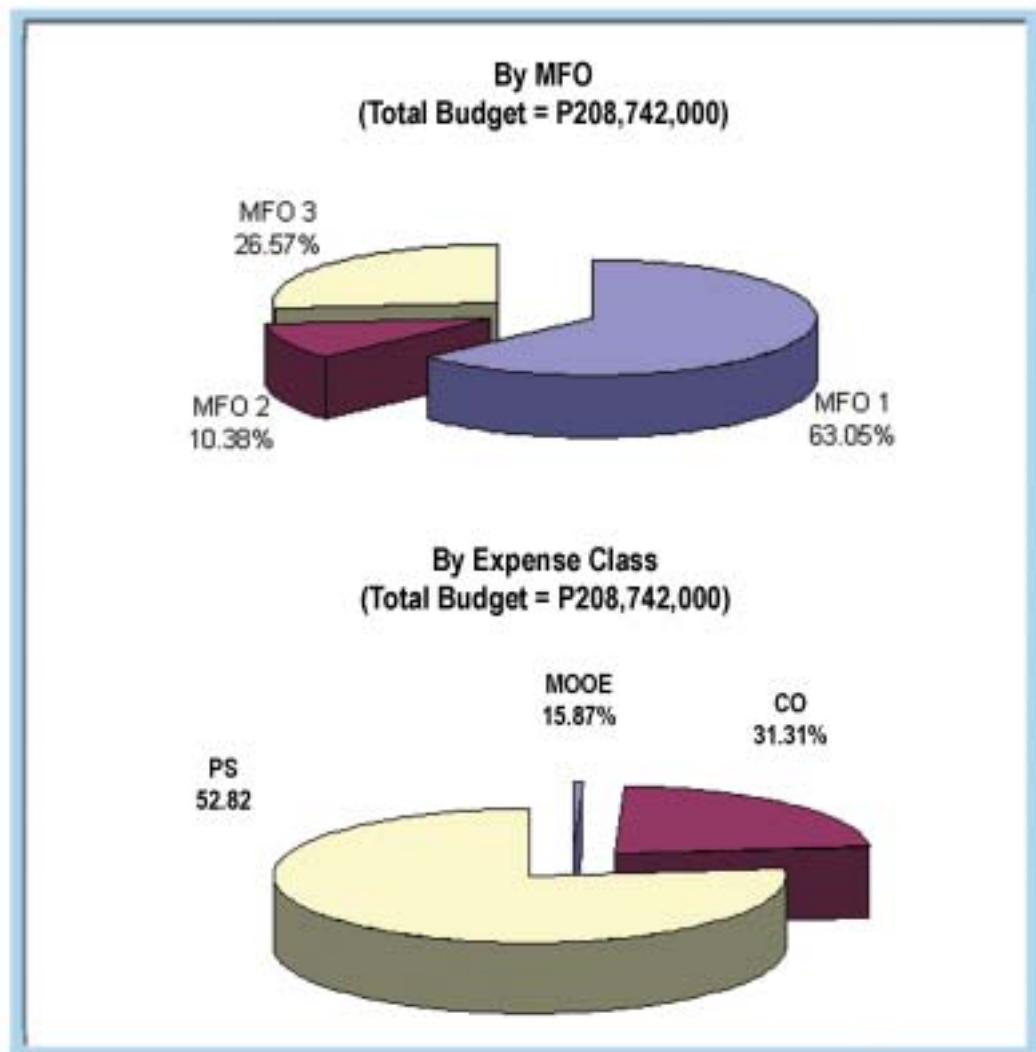
PERFORMANCE MEASURES AND TARGETS

PARTICULARS	CY 2007		CY2008	
	Target	Amount	Target	Amount
MFO 1: R & D on industrial manufacturing, mineral processing & energy Performance Indicators : No. of R & D projects implemented No. of technical papers prepared No. of IPs applied/granted - No. of Copyrights - No. of Patents		86,657		131,624
MFO 2: Technology Transfer Performance Indicators : No. of Clients Served -DOSR-RO supported -ITDI direct clients No. of Technology Transfer Agreements		14,316		21,663
MFO 3: S & T Services Performance Indicators : Testing Analysis No. of services rendered No. of clients served Fees collected (P M) Metrology Services No. of services rendered No. of clients served Fees collected (P M) Other Technical Services No. of services rendered No. of clients served Income Generated (P M)		47,909		55,455
TOTAL		148,882		208,742

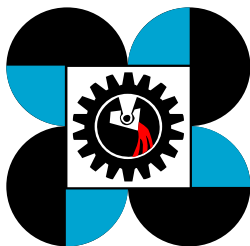
FY 2008 MFO BUDGET

By MFO/By Expense Class

Particulars	PS	MOOE	CO	TOTAL	% Share
MFO 1: R&D on industrial manufacturing, mineral processing & energy	69,644	19,142	42,838	131,624	63.05%
MFO 2: Technology Transfer	10,857	3,605	7,201	21,663	10.38%
MFO 3: S&T Services	29,758	10,388	15,309	55,455	26.57%
TOTAL	110,259	33,135	65,348	208,742	100.00%
% Share	52.82%	15.87%	31.31%	100.00%	



Metals Industry Research and Development Center



The Metals Industry Research and Development Center (MIRDC) logo is consistent with the logo of the Department of Science and Technology (DOST) which consists essentially of four circles to represent the four guiding principles in S&T development: Excellence, Relevance, Cooperation, and Cost-Effectiveness joined together to form a square. The circles symbolize unit particles, the building blocks of nature, which are the subject and substance of science and technology. The circle design, together with the gear inside the square, gives an illusion of movement, signifying progress through S & T. At the core of the gear is a stream of molten metal ready to transform and take shape, symbolic of the unlimited flow and potential of scientific creativity and technological activities in generating new knowledge and technologies vital in shaping a better future. The logo's three-color scheme represents the unknown (black), truth and enlightenment (white) and progress (blue).

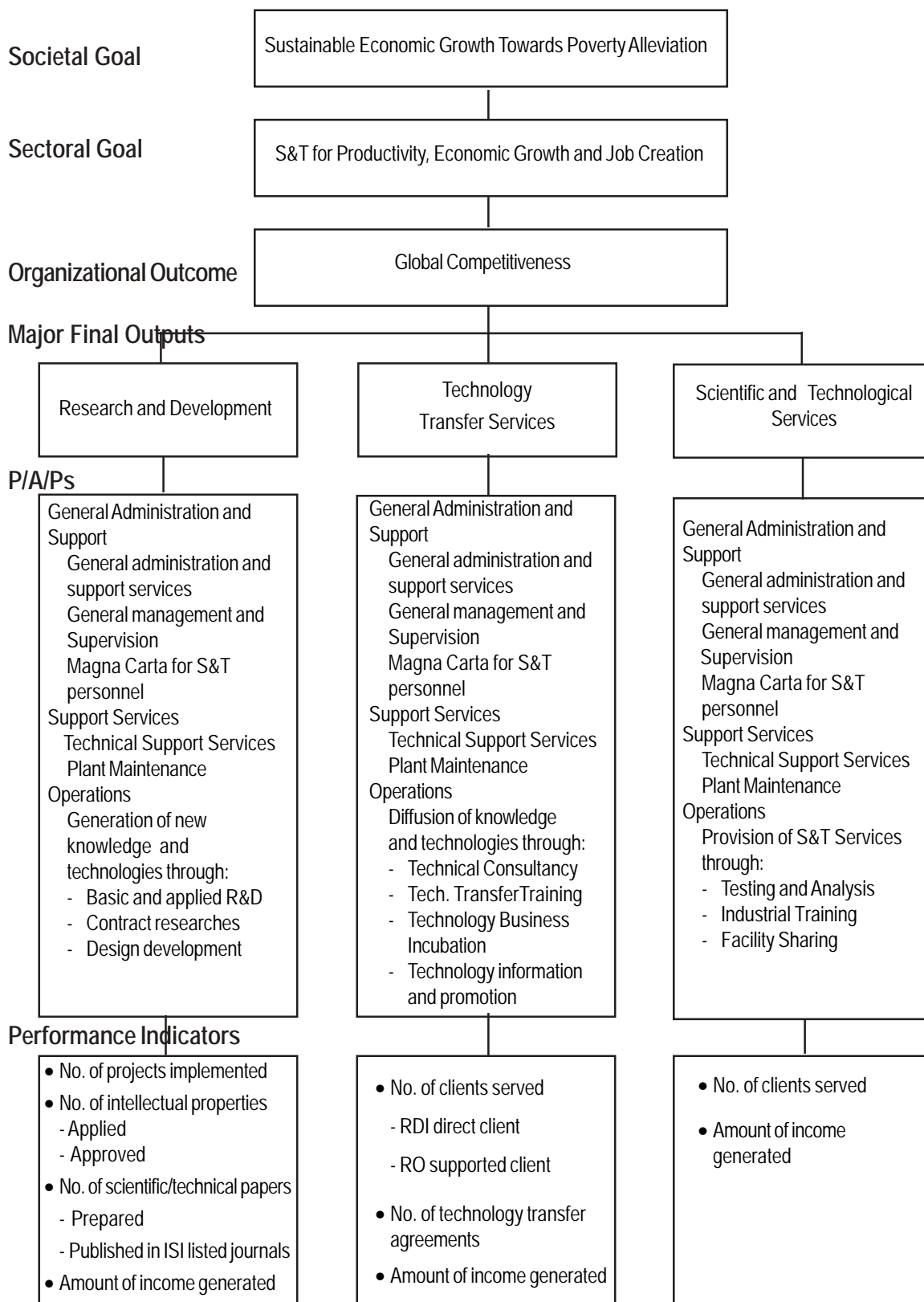
Legal Basis

- **Republic Act No. 4724** (1966) organized the Metals Industry Development Center (MIDC) to work for close support between the government and the industry to foster the advancement of metals, engineering and allied industries in the country.
- **Republic Act No. 6428** (1972) reorganized and renamed the MIDC into the Metals Industry Research and Development Center (MIRDC), giving it corporate existence under the National Science Development Board (NSDB).
- **Executive Order No. 602** (1980) transferred MIRDC from the then NSDB to the Ministry of Trade and Industry, now the Department of Trade and Industry (DTI), for policy and program coordination and direction.
- **Presidential Decree No. 1765** (1981) reoriented MIRDC thrust from research and development to direct assistance to the metals industry.
- **Executive Order No. 128** (1987) transferred the MIRDC from the DTI to the Department of Science and Technology (DOST) as an attached agency.
- **Executive Order No. 494** (1992) transformed the MIRDC into a regular government agency under the DOST.

Mandate

The Metals Industry Research and Development Center (MIRDC) provides both the government and the private sector in the metals and engineering industry with professional management and technical expertise on training of engineers and technicians, information exchange, trade accreditation services, quality control and testing of metal products, research and development, and business economics advisory services.

LOGICAL FRAMEWORK (MIRDC)



PERFORMANCE MEASURES AND TARGETS

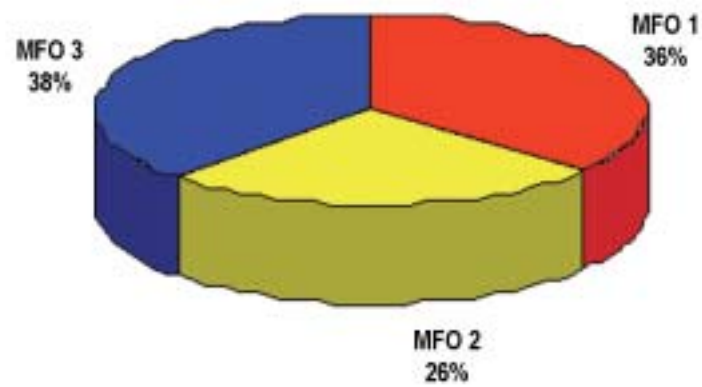
Particulars	FY2007		FY2008	
	Target	Amount ('000)	Target	Amount ('000)
MFO 1:		33,114		37,112
Research & Development				
No. of R&D projects implemented	84		81	
Ongoing	5		2	
New	79		79	
No. of intellectual properties applied/approved	2		5	
No. of scientific/technical papers	-			
Prepared	-		8	
Published in ISI accredited journals	-		1	
Amount of income generated ('000)	1,600		1,650	
MFO 2:		25,907		27,352
Technology Transfer Services				
No. of clients served	895		775	
RDI direct client	355		355	
RO supported client	540		420	
No. of technology transfer agreements	5		13	
Amount of income generated ('000)	3,180		3,390	
MFO 3:		35,103		39,071
Scientific & Technological Services				
No. of client served	4,100		4,200	
Testing and metrology	3,100		3,100	
Industrial training	500		600	
Facility sharing	500		500	
Amount of Income Generated ('000)	21,920		22,160	
Testing and metrology	13,960		14,000	
Industrial training	2,000		2,200	
Facility sharing	5,960		5,960	
TOTAL		94,124		103,535

FY 2008 MFO BUDGET

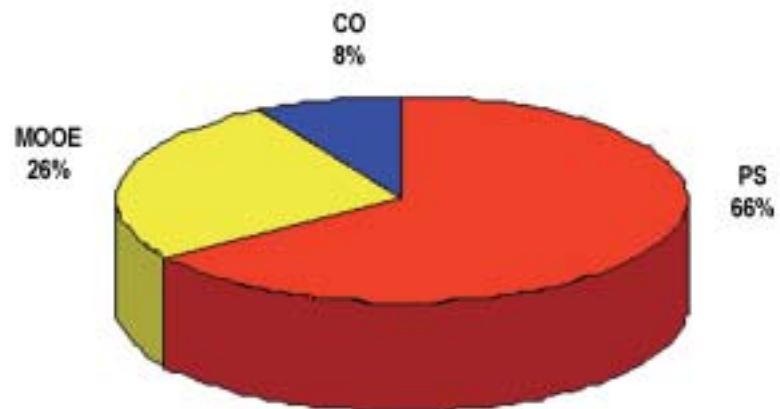
By MFO/By Expense Class

Particulars	PS	MOOE	CO	Total	% Share
MFO 1:					
Research and Development	24,908	9,636	2,568	37,112	36%
MFO 2:					
Tech. Transfer Services	19,205	6,750	1,397	27,352	26%
MFO 3:					
S & T Services	23,764	10,636	4,670	39,071	38%
Total	67,877	27,022	8,635	103,535	100%
% Share	66%	26%	8%	100%	

By MFO
(Total Budget = P103,535,000)



By Expense Class
(Total Budget = P103,535,000)



National Academy of Science and Technology



The National Academy of Science and Technology (NAST) logo carries the colors and elements of the Philippine flag. The laurel leaf on both sides of the Philippine emblem denotes excellence. The five circles above it represent NAST's five areas of concern – Agricultural, Biological, Health, Social and Chemical, Mathematical and Physical Sciences.

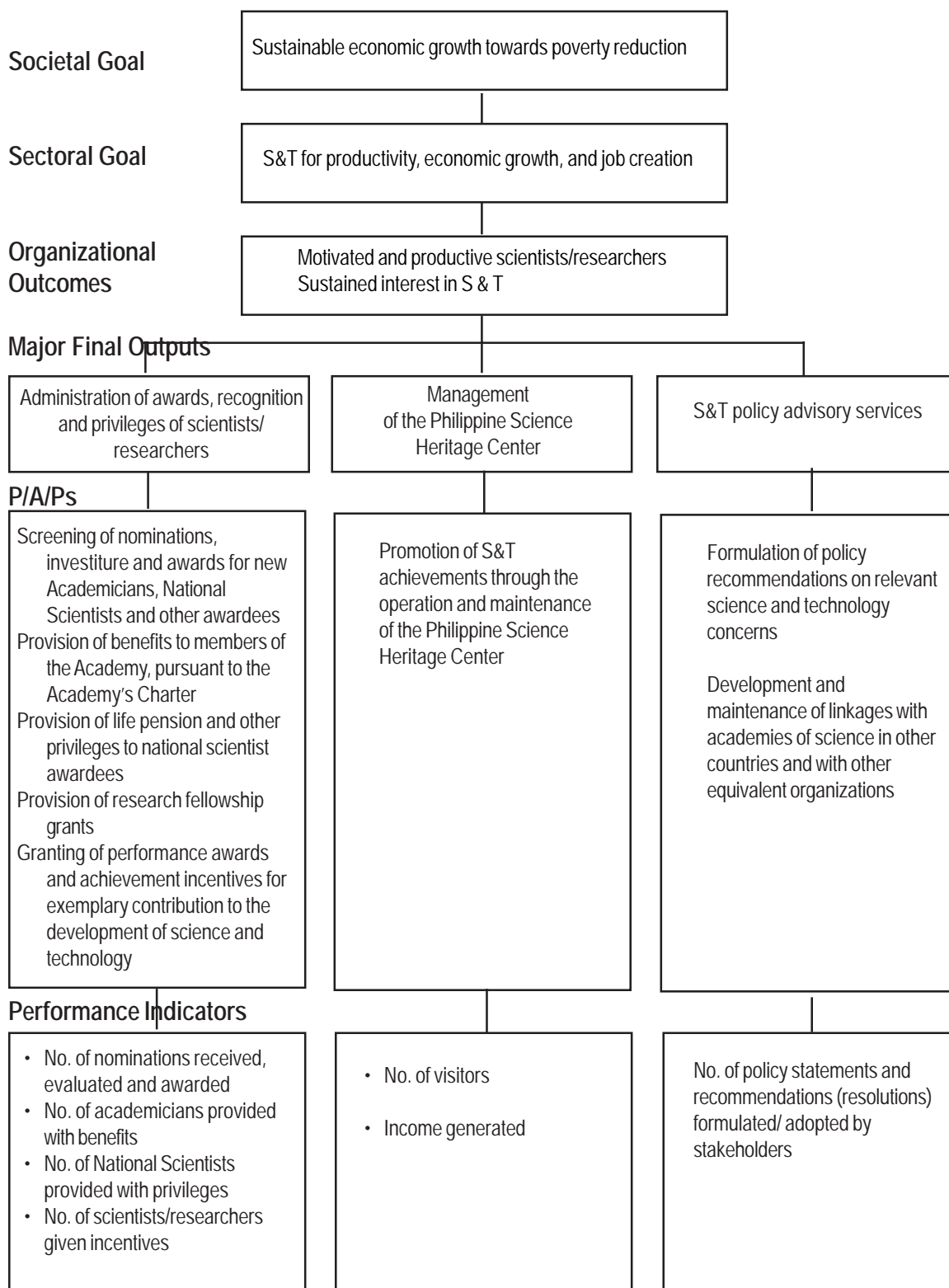
Legal Basis

- **Presidential Decree No. 1003- A** (December 17, 1976), as amended, created the National Academy of Science and Technology (NAST)
- **Executive Order No. 818** (July 16, 1982) amended P.D. 1003-A creating the NAST.
- **Republic Act No. 9107** (April 14, 2004) created the Philippine Science Heritage Center under the management of the NAST.

Mandate

The National Academy of Science and Technology (NAST) advises the President on matters related to science and technology; engages in projects and programs designed to promote scientific productivity; and embarks on programs traditionally and internationally expected of an academy of science. The NAST recognizes outstanding achievements in science and technology and provides meaningful incentives to those engaged in scientific and technological researches.

LOGICAL FRAMEWORK (NAST)

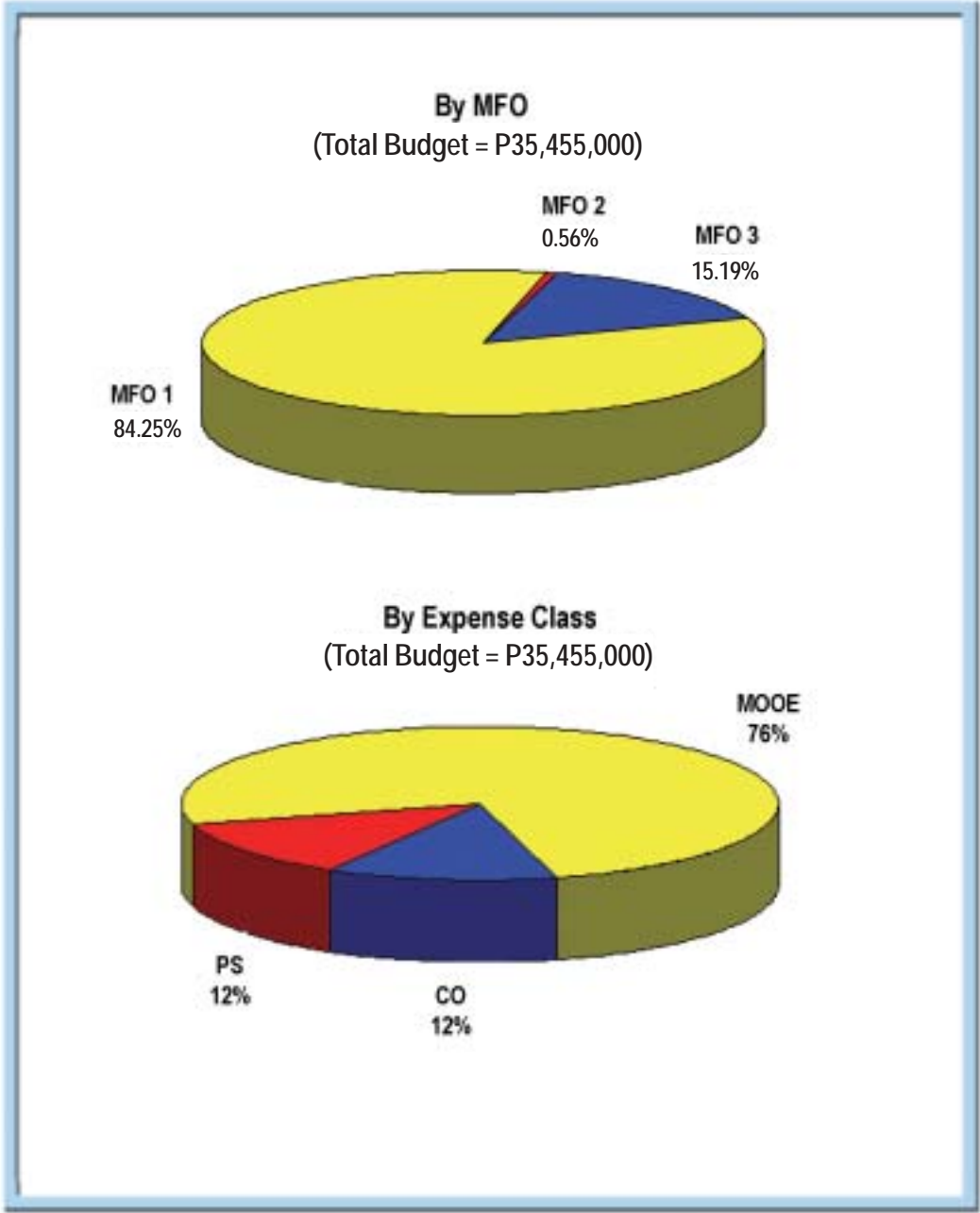


PERFORMANCE MEASURES AND TARGETS

Particulars	FY 2007		FY 2008	
	Target	Amount	Target	Amount
MFO 1: Administration of awards, recognition and privileges of scientists/researchers Performance Indicators No. of nominations: received evaluated awarded No. of academicians provided with benefits No. of National Scientists provided with privileges No. of scientists/researchers given incentives		22,066		29,869
MFO 2: Management of the Philippine Science Heritage Center Performance Indicators No. of visitors Income generated		-		200
MFO 3: S&T policy advisory services Performance Indicators No. of policy statements and recommendations or resolutions: formulated adopted		3,457		5,386
TOTAL		3,457		5,586

FY 2008 MFO BUDGET

Particulars	PS	MOOE	CO	TOTAL	% Share
MFO 1: Administration of awards, recognition and privileges of scientists/researchers	3,613	23,600	2,656	29,869	84.25%
MFO 2: Management of the Philippine Science Heritage Center		200		200	0.56%
MFO 3: S&T policy advisory services	740	2,902	1,744	5,386	15.19%
TOTAL	4,353	26,702	4,400	35,455	100.00%
% Share	12%	76%	12%	100%	



National Research Council of the Philippines



The National Research Council of the Philippines (NRCP) logo is encompassed by the scallops representing the Scientific Divisions of the Council, originally seven when it was created in 1933; but, with the creation of five other divisions, the seal has now 12 scallops. The inner circle carries the official name of the Council and the year (1933) when it was created by Act 4120 of the 9th Philippine Legislature. The innermost circle contains images/geographical representations of the Council's Scientific Divisions.

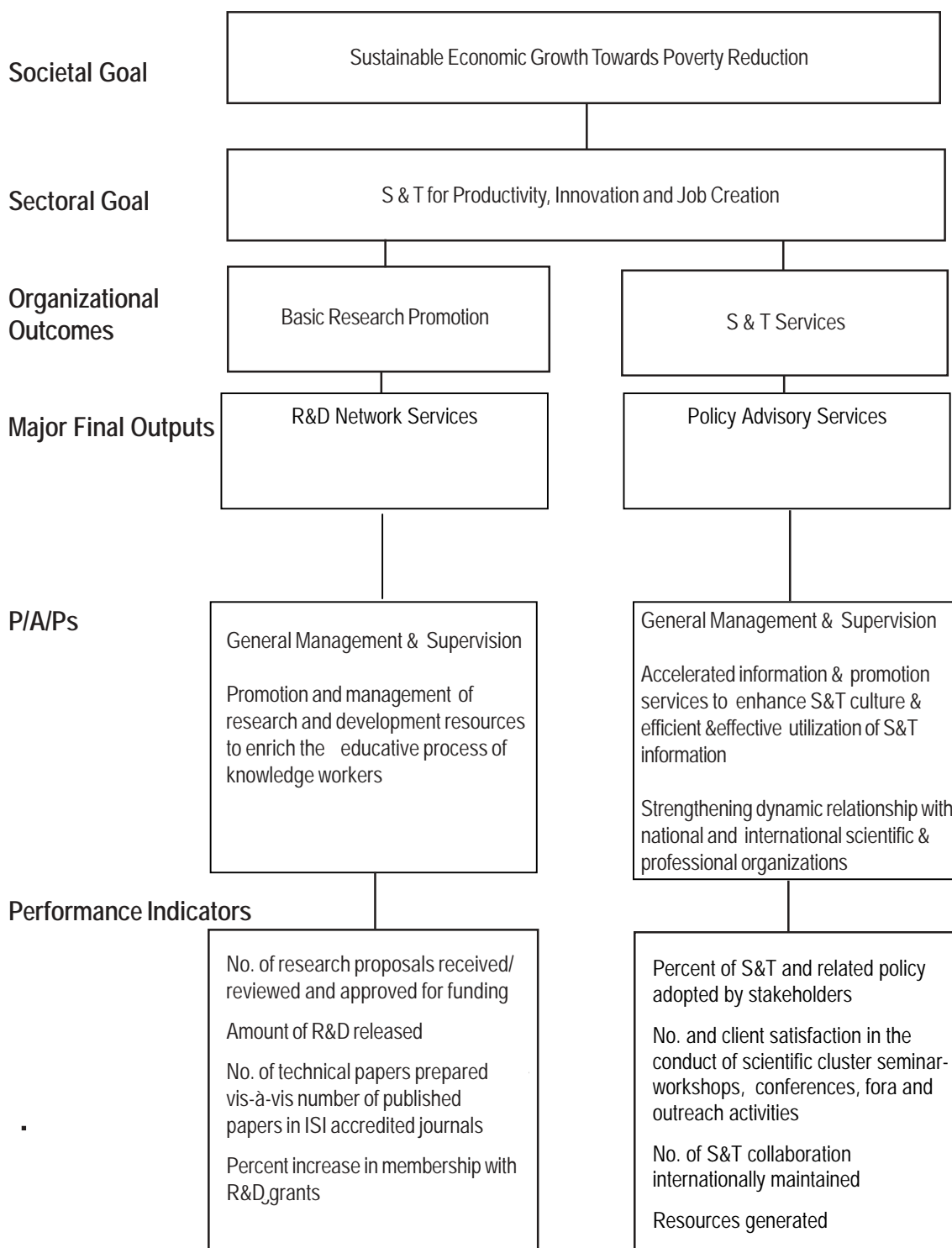
Legal Basis

- **Ninth Philippine Legislature Act No. 4120** (December 8, 1933) created the National Research Council of the Philippine Islands for the promotion of research work along scientific line.
- **Republic Act No. 2067** (June 13, 1958), Science Act of 1958, created the National Science Development Board (NSDB), Section 20 of which provided that the National Research Council of the Philippines (NRCP) shall act as the official adviser on scientific matters to the Government of the Philippines.
- **Executive Order No. 784** (March 17, 1982) reorganized the National Science Development Board into a National Science and Technology Authority (NSTA), with the NRCP designated as one of the science and technology councils attached to the Authority for policy and program coordination.
- **Executive Order No. 128** (January 30, 1987) reorganized the NSTA, with the NRCP being renamed to the Philippine National Science Society (PNSS).
- **Republic Act No. 6974** (December 8, 1990) restored the name of the agency to National Research Council of the Philippines.

Mandate

The National Research Council of the Philippines (NRCP) promotes and supports fundamental or basic research for the continuing total improvement of the research capability of individual or group of scientists; provides advice on problems and issues of national interest; promotes scientific and technological culture to all sectors of society; and fosters linkages with local and international scientific organizations for enhanced cooperation in the development and sharing of information.

LOGICAL FRAMEWORK (NRCP)



PERFORMANCE MEASURES AND TARGETS

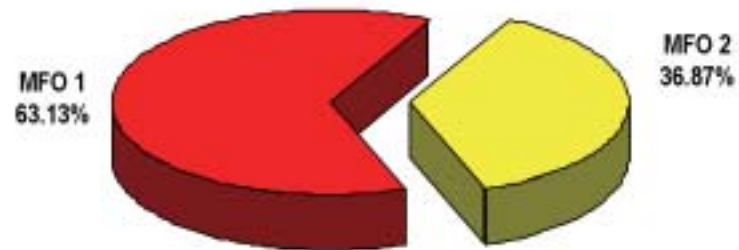
Particulars	FY 2007		FY 2008	
	Target	Amount	Target	Amount
MFO 1: R&D network services		14,451		18,598
Performance Indicators				
No. of R&D research proposals reviewed as against projects approved/funded	25	20	30	27
Amount of R&D funds released	5,658		7,658	
No. of technical papers prepared vis-à-vis no. of published papers in ISI accredited journals	3	1	5	1
Percent increase in membership with R&D grants				
MFO 2: Policy advisory services		7,051		10,862
Performance Indicators				
No. of S&T and related policy submitted vis-à-vis no. of policies adopted by stakeholders	8	4	10	5
Percent increase in membership with R&D grants	.74%		1.03%	
TOTAL		21,502		29,460

FY 2008 MFO BUDGET

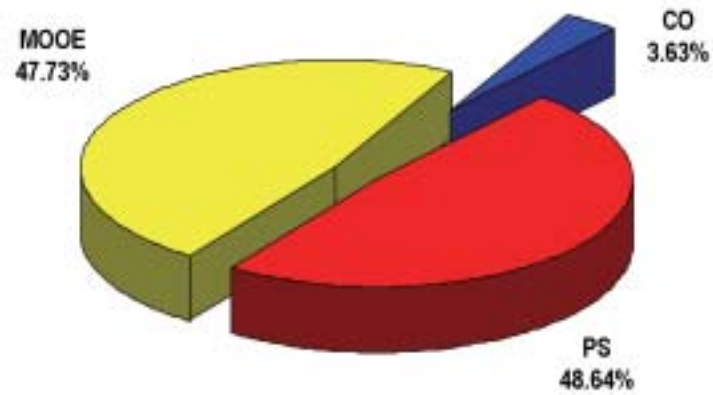
By MFO/By Expense Class

Particulars	PS	MOOE	CO	TOTAL	% Share
MFO 1: R&D network services	8,390	9,674	535	18,599	63.13%
MFO 2: Policy advisory services	5,940	4,386	535	10,861	36.87%
TOTAL	14,330	14,060	1,070	29,460	100%
% Share	48.64%	47.73%	3.63%	100%	

By MFO
(Total Budget = P29,460,000)



By Expense Class
(Total Budget = P29,460,000)



Philippine Atmospheric, Geophysical and Astronomical Services Administration



The Philippine Atmospheric, Geophysical and Astronomical Services Administration (PAGASA) logo features four circles joined together side by side to form a square. The circle suggests movement, signifying progress through science and technology. The logo's four circles represent the four guiding principles in S&T development: Excellence, Relevance, Cooperation, and Cost-Effectiveness. The logo's three-color scheme represents the unknown (black), truth and enlightenment (white) and progress (blue). The six red stars in the center symbolize PAGASA's six major branches; and at the core of the logo is a wind vane and anemometer symbolizing PAGASA's functional coverage.

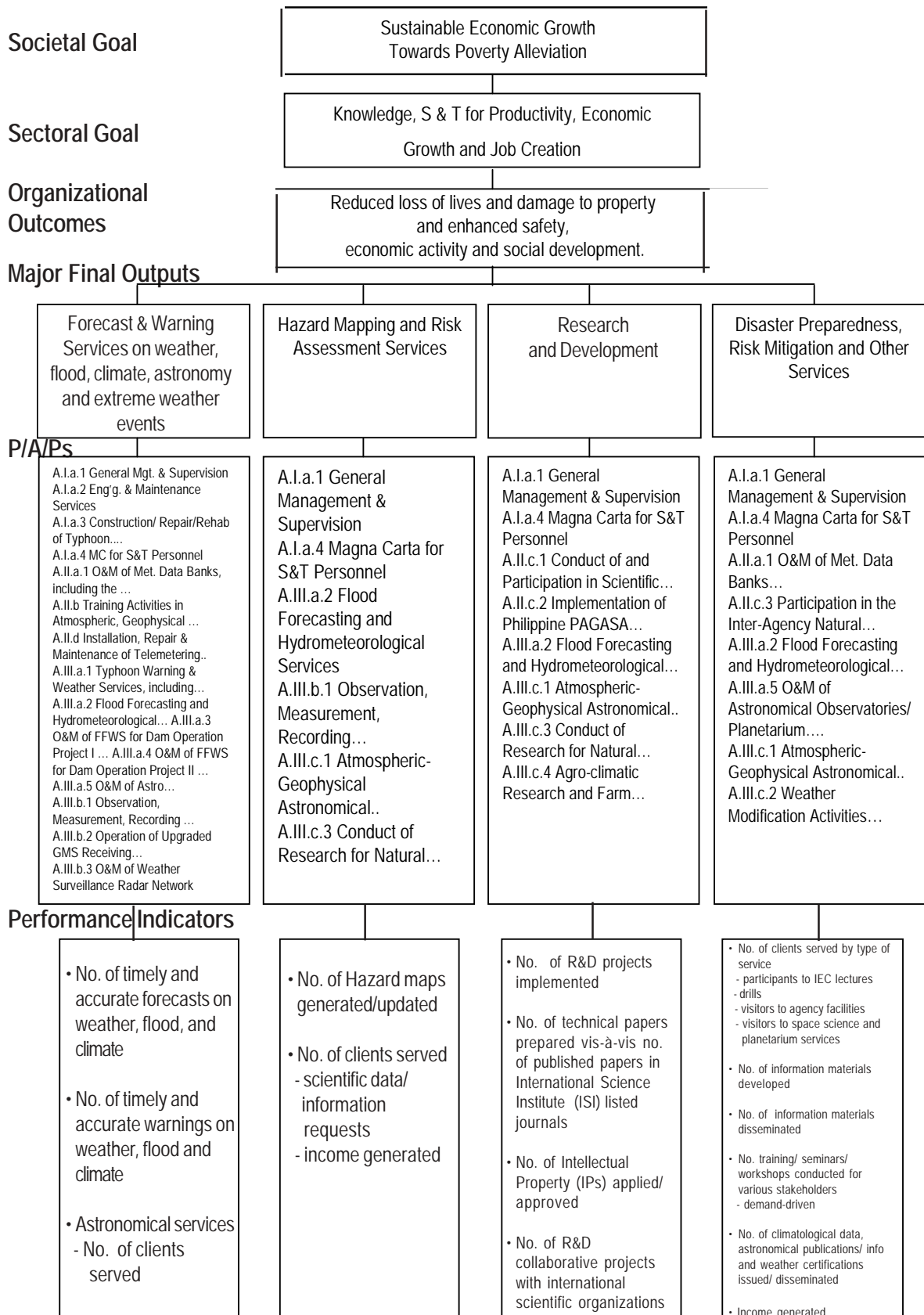
Legal Basis

- **Observatorio Meteorologico de Manila** (April 28, 1884), a Spanish royal decree which recognized the observatory originally established on January 1, 1865 by the Jesuits at the Ateneo Municipal as an official institution of the government.
- **Philippine Commission Act No. 131** (May 22, 1901) established the Philippine Weather Bureau.
- **Presidential Decree No. 78** (December 8, 1972) reorganized the Weather Bureau into the Philippine Atmospheric, Geophysical and Astronomical Services Administration (PAGASA) and transferred it from the Department of Commerce and Industry to the Department of National Defense.
- **Presidential Decree No. 1149** (June 2, 1977) amended PD No. 78 to include the establishment of two additional major units, the Typhoon Moderation Research and Development Office (TMRDO) and the National Flood Forecasting Office (NFFO), under PAGASA.
- **Executive Order No. 984** (September 17, 1984) transferred the PAGASA from the Department/Ministry of National Defense to the National Science and Technology Authority (NSTA).
- **Executive Order No. 128** (January 30, 1987) mandated the reorganization of the NSTA into the Department of Science and Technology (DOST) to which the PAGASA is attached.

Mandate

The Philippine Atmospheric, Geophysical and Astronomical Services Administration (PAGASA) is mandated "to provide protection against natural calamities and utilize scientific knowledge as an effective instrument to ensure the safety, wellbeing, and economic security of all the people, for the promotion of national progress."

LOGICAL FRAMEWORK (PAGASA)

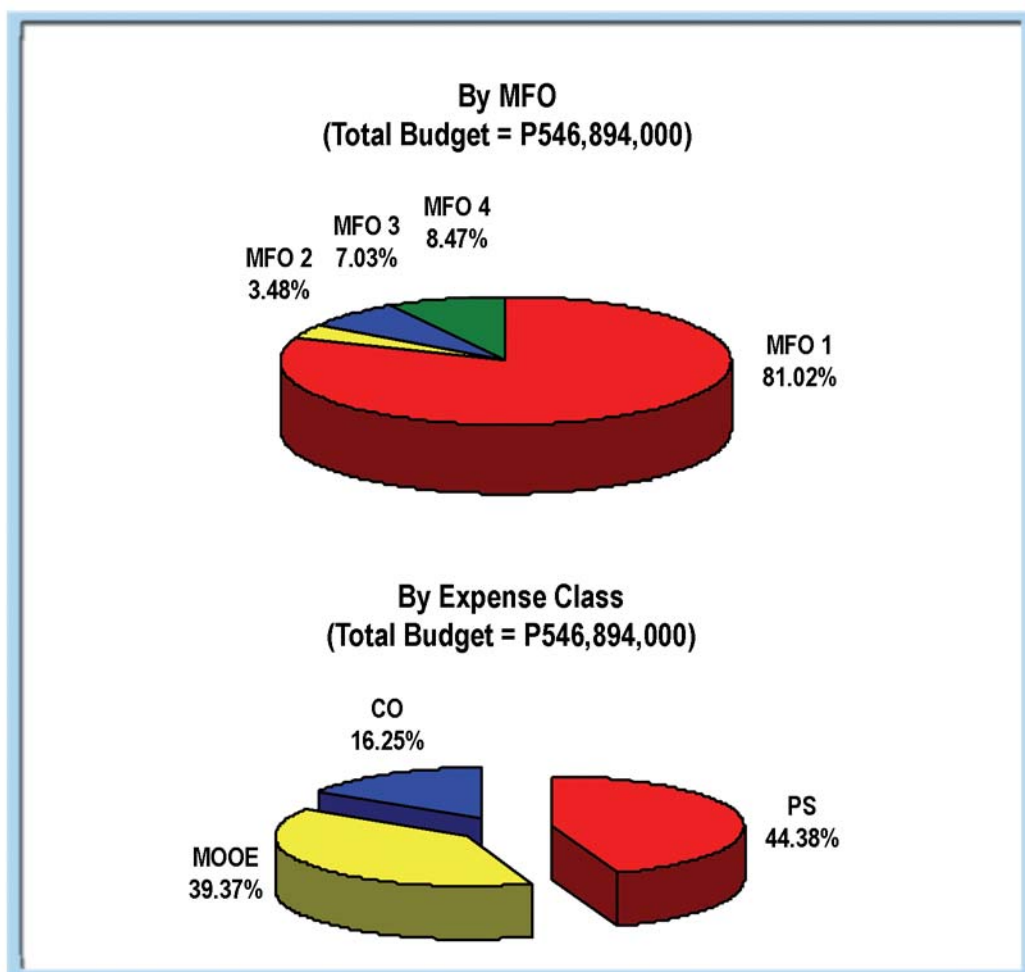


PERFORMANCE MEASURES AND TARGETS

Particulars	FY 2007			FY 2008	
	Target	Actual (Jan.-June)	Amount (In Thousand Pesos)	Target	Amount (In Thousand Pesos)
MFO 1: Forecast and Warning Services on weather, flood, climate, astronomy and extreme weather events Performance Indicators: <ul style="list-style-type: none"> ▪ No. of timely and accurate forecasts on weather, flood, and climate ▪ No. of timely and accurate warnings on weather, flood and climate (as necessary) ▪ No. of astronomical services: - No. of clients served 	33,689 578 8,820	17,557 127 4,307	471,912	33,689 578 9,110	443,072
MFO 2: Hazard Mapping and Risk Assessment Services Performance Indicators: <ul style="list-style-type: none"> ▪ No. of hazard maps generated/updated ▪ No. of clients served - scientific data / information requests - income generated 	18 Upon request Upon request	14 On-going 4 completed 417 P18,800.00	14,887	18 Upon request	19,057
MFO 3: Research & Development Performance Indicators <ul style="list-style-type: none"> ▪ No. of R & D projects implemented ▪ No. of technical papers prepared vis-à-vis published papers in Int'l. Science Institute (ISI) listed journals ▪ No. of Intellectual Property applied/ approved ▪ No. of R&D collaborative projects with international scientific organization 	28 1 6 11	28 25 On-going 3 Completed Submitted for evaluation/review For submission to National Library 4	36,416	28 1 9 16	38,427
MFO 4: Disaster Preparedness and Risk Mitigation and Other Services Performance Indicators: <ul style="list-style-type: none"> ▪ No. of clients served by type of services: - participants to IEC lectures - drills - visitors to agency facilities - visitors availing of space science and planetarium services ▪ No. of information packages developed ▪ No. of information packages disseminated ▪ No. of training/seminars/workshops conducted for various stakeholders - demand-driven ▪ No. of climatological hydro meteorological data/ astronomical publications info and weather certifications issued/disseminated and no. of met. instrument tested/ calibrated/repared ▪ Income generated 	Upon request - do - -do- -do- 6 Upon request - do - - do -	13,814 2,816 26,008 11,136 6 9,834 ---	35,756	Upon request - do - -do- -do- 6 Upon request Upon request	46,338
TOTAL		P1,278,982.00	558,971		546,894

FY 2008 MFO BUDGET

PARTICULARS	PS	MOOE	CO	TOTAL	% SHARE
MFO 1 Forecast and Warning Services on weather, flood, climate, astronomy and extreme weather events	181,486	172,734	88,852	443,072	81.02%
MFO 2 Hazard Mapping and Risk Assessment Services	10,109	8,948	-	19,057	3.48%
MFO 3 Research and Development	25,739	12,688	-	38,427	7.03%
MFO 4 Disaster Preparedness, Risk Mitigation and other Services	25,369	20,969	-	46,338	8.47%
TOTAL	242,703	215,339	88,852	546,894	100%
% SHARE	44.38%	39.37%	16.25%	100%	



Philippine Council for Advanced Science and Technology Research and Development



The Philippine Council for Advanced Science and Technology Research and Development (PCASTRD) logo depicts it as one of the sectoral planning councils of the Department of Science and Technology (DOST). Its priority areas include biotechnology, electronics technology, information and communications technology, materials science, photonics technology, and space technology applications.

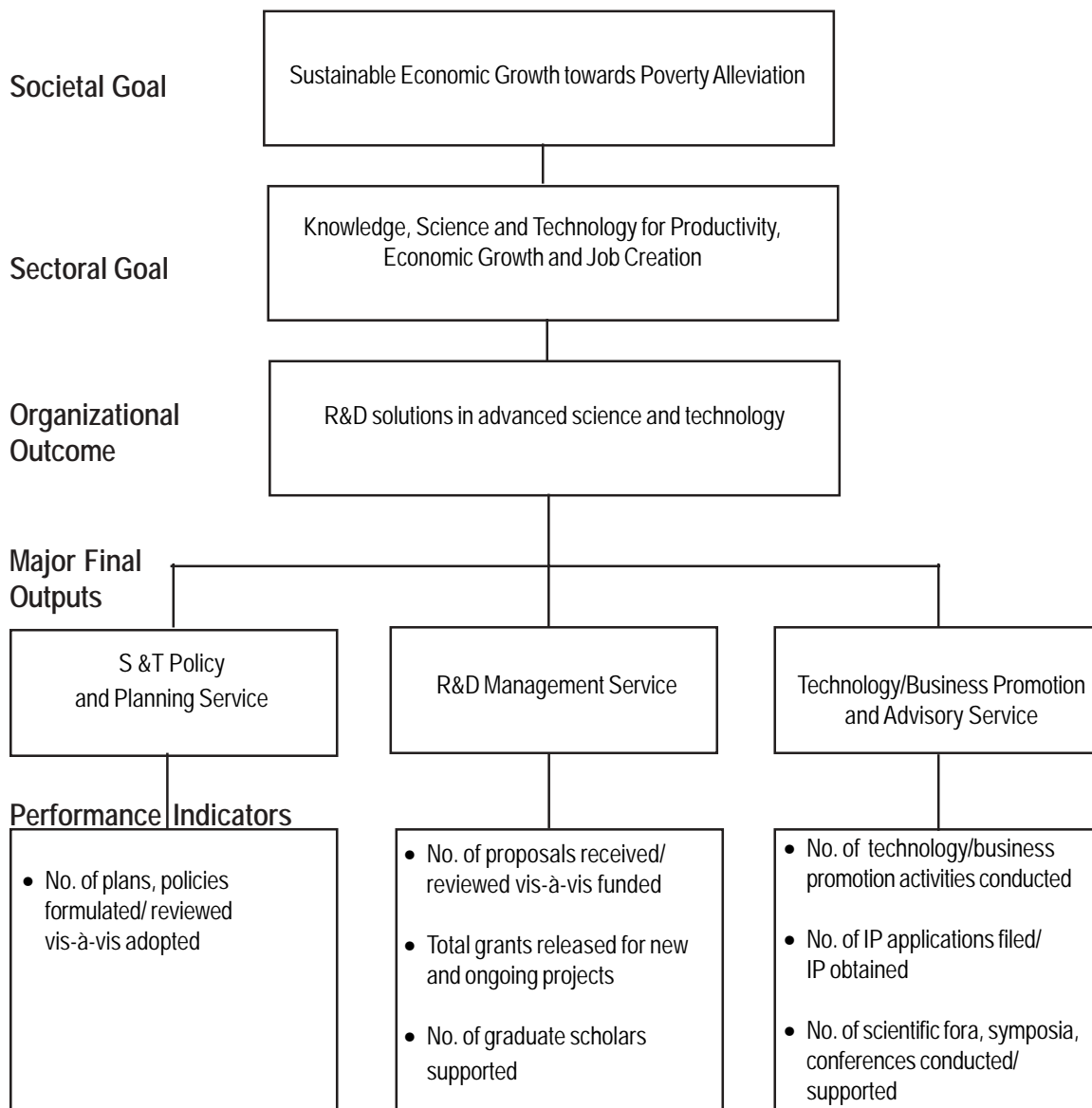
Legal Basis

Executive Order No. 128 (January 30, 1987) created the Philippine Council for Advanced Science and Technology Research and Development (PCASTRD) as one of the five sectoral planning councils of the Department of Science and Technology.

Mandate

The Philippine Council for Advanced Science and Technology Research and Development (PCASTRD) is responsible for formulating strategies, policies, plans, programs and projects for advanced S&T development; programming and allocating government and external funds for R&D; monitoring R&D projects and generating external resources to implement its mission programs to develop the country's advanced science and technology sector.

LOGICAL FRAMEWORK (PCASTRD)



PERFORMANCE MEASURES AND TARGETS

Particulars	FY 2007		FY 2008	
	Target	Amount	Target	Amount
MFO 1 S&T Policy and Planning Service <ul style="list-style-type: none"> No. of plans, policies formulated/reviewed vis-à-vis adopted 	3:1	6,932	3:1	10,937
MFO 2 R&D Management Service <ul style="list-style-type: none"> No. of proposals received/ reviewed vis-à-vis funded Total grants released for new and ongoing projects No. of graduate scholars supported* 	15:12 17M 75	39,765	20:12 40M 75	57,664
MFO 3 Technology/Business Promotion and Advisory Service <ul style="list-style-type: none"> No. of technology/business promotion activities conducted No. of IP applications filed/IP obtained No. of scientific fora, symposia, conferences conducted/supported 	4 1 12	9,290	6 1 15	14,271
Total		55,987		82,872

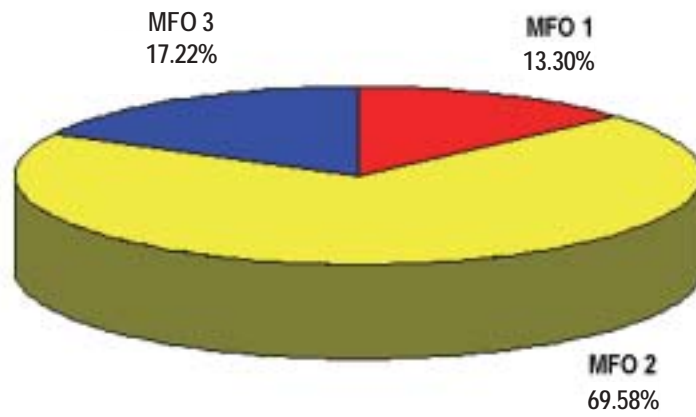
* Refers only to ongoing PCASTRD scholars; new scholars are funded under the DOST Accelerated S&T Human Resources Development Program.

FY 2008 MFO BUDGET

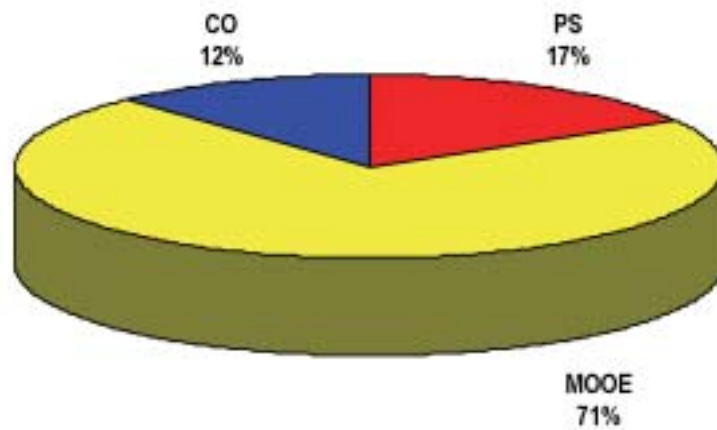
By MFO/By Expense Class

Particulars	PS	MOOE	CO	Total	% Share
MFO 1 S&T Policy and Planning Service	4,576	10,714	3,038	10,937	13.30%
MFO 2 R&D Management Service	4,577	57,441	3,636	57,664	69.58%
MFO 3 Technology/ Business Promotion and Advisory Service	4,576	14,048	3,326	14,271	17.22%
Total	13,729	59,143	10,000	82,872	100%
% Share	17%	71%	12%	100%	

By MFO
(Total Budget = P82,872,000)



By Expense Class
(Total Budget = P82,872,000)



Philippine Council for Agriculture, Forestry and Natural Resources Research and Development



The Philippine Council for Agriculture, Forestry and Natural Resources Research and Development (PCARRD) logo features a '*salakot*' to depict the Council's concern for research to impinge upon the lives and wellbeing of the common folk and to push the momentum of research from scientific centers to the farms. As this headgear protects those who toil in the fields against the sun and the rain, so must the national research system cushion them from the impact of a changing economy with technologies that are practical, effective, and acceptable in their socio-cultural milieu. The *salakot's* dome dramatizes the bounty and promise of Philippine agriculture while the brim depicts the breadth of natural resources which today require even more judicious management.

The '*salakot*' is held up by a figure representing an AFNR community that has been fused into a cogent and systematic national research enterprise – aggressive, alert, and responsive to national goals. The circles symbolize PCARRD's strong development orientation and commitment, as a sectoral council of the DOST, to the hallmarks of Relevance, Excellence, Harmony, and Cost-Effectiveness.

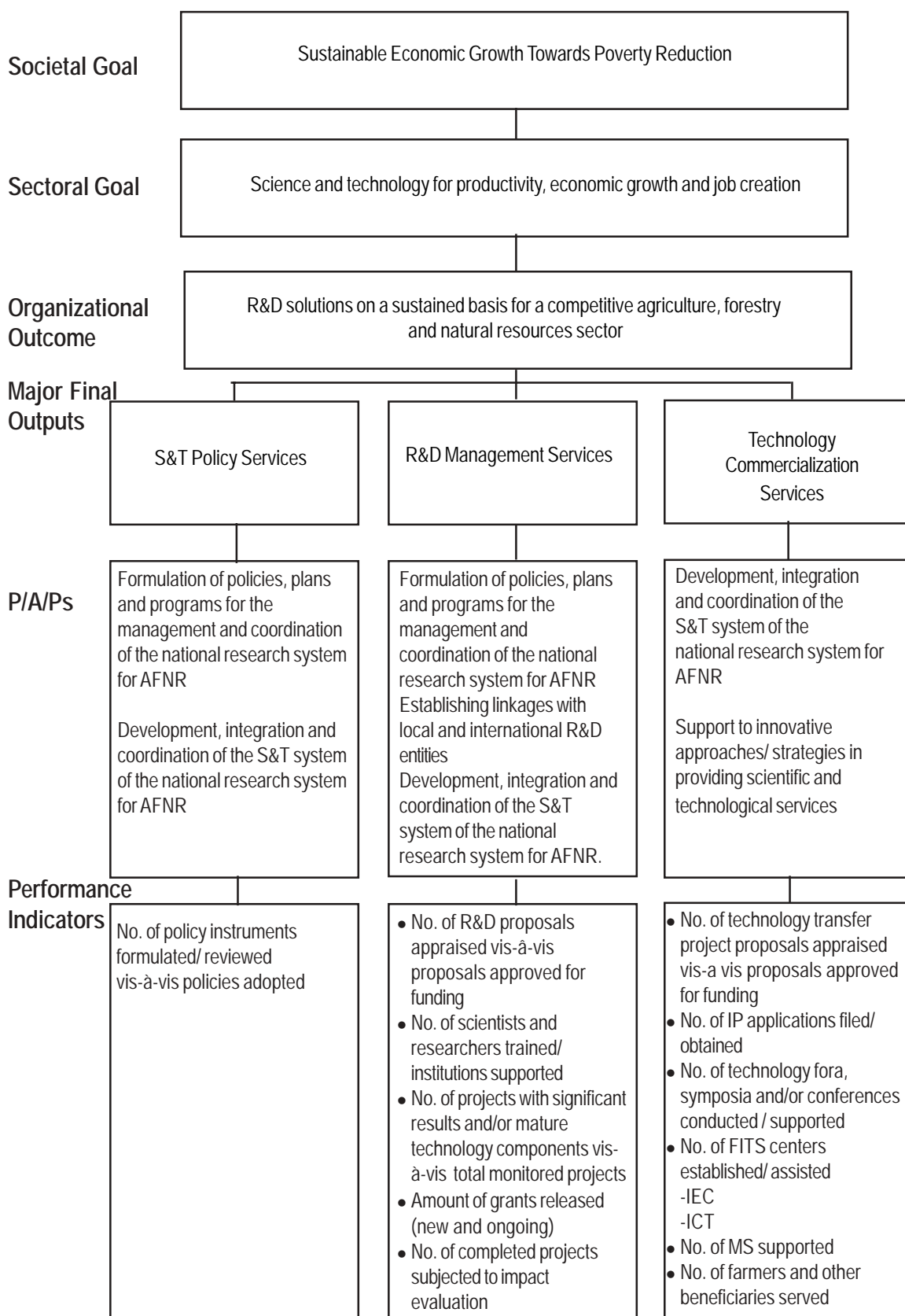
Legal Basis

- **Presidential Decree No. 48** (November 10, 1972) created the Philippine Council for Agriculture, Forestry and Natural Resources Research and Development (PCARRD).
- **Executive Order No. 128** (January 30, 1987) reorganized PCCARD as an attached agency of the Department of Science and Technology.

Mandates

The Philippine Council for Agriculture, Forestry and Natural Resources Research and Development (PCARRD) formulates plans, strategies, policies, and programs for S&T development. It programs and allocates government and external funds for R&D and monitors and evaluates R&D programs and projects.

LOGICAL FRAMEWORK (PCARRD)



PERFORMANCE MEASURES AND TARGETS

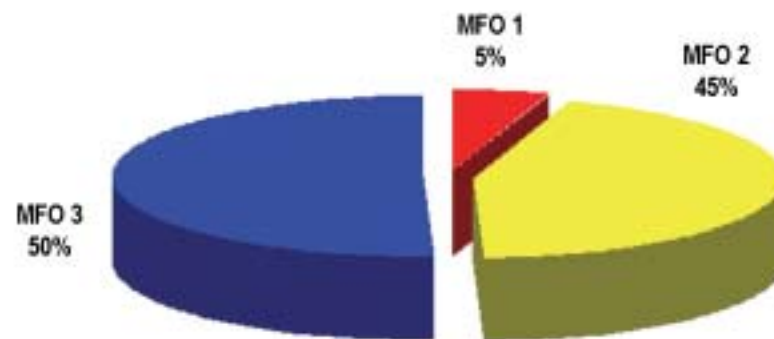
Particulars	FY 2007		FY 2008	
	Target	Amount	Target	Amount
MFO 1: S&T Policy Services Performance Indicator: No. of policy instruments formulated/ reviewed vis-à-vis policies adopted				13.910
MFO 2: R&D Management Services Performance Indicators: No. of R&D proposals appraised vis-à-vis proposals approved for funding No. of scientists and researchers trained/ institutions supported No. of projects with significant results and/or mature technology components vis-à-vis total monitored projects Amount of grants released (new and ongoing) No. of completed projects subjected to impact evaluation				126.157
MFO 3: Technology Commercialization Services Performance Indicators: No. of technology transfer project proposals appraised vis-a vis proposals approved for funding No. of IP applications filed/obtained No. of technology fora, symposia and/or conferences conducted / supported No. of FITS centers established/ assisted -IEC -ICT No. of MS supported No. of farmers and other beneficiaries served				142.482
TOTAL				282.549

FY 2008 MFO BUDGET

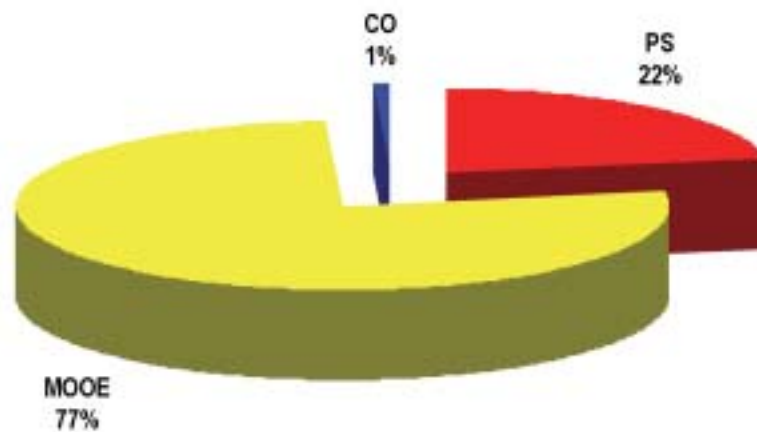
By MFO/By Expense Class

Particulars	PS	MOOE	CO	TOTAL	% Share
MFO 1: S&T Policy Services	10.69	3.220	-	13.910	5%
MFO 2: R&D Management Services	29.333	94.824	2.000	126.157	45%
MFO 3: Technology Commercialization Services	22.668	119.814	-	142.482	50%
TOTAL	62.691	217.858	2.000	282.549	100%
% Share	22%	77%	1%	100%	

By MFO
(Total Budget = P282,549,000)



By Expense Class
(Total Budget = P282,549,000)



Philippine Council for Aquatic and Marine Research and Development



The Philippine Council for Aquatic and Marine Research and Development (PCAMRD) logo consists of four tangential circles cut away by each of their perpendicular radii to form a square at its center. Inside the square is a four-pointed star that symbolizes scientific creativity. The figure of a man in the center of the logo symbolizes human development as the main goal of R&D; it also depicts that the man is the steward/caretaker of aquatic resources. The waves/water signify the abundant and dynamic resources harnessed for human development. The three official colors of the PCAMRD logo are black, for the unknown; white, for truth and enlightenment; and blue, for progress.

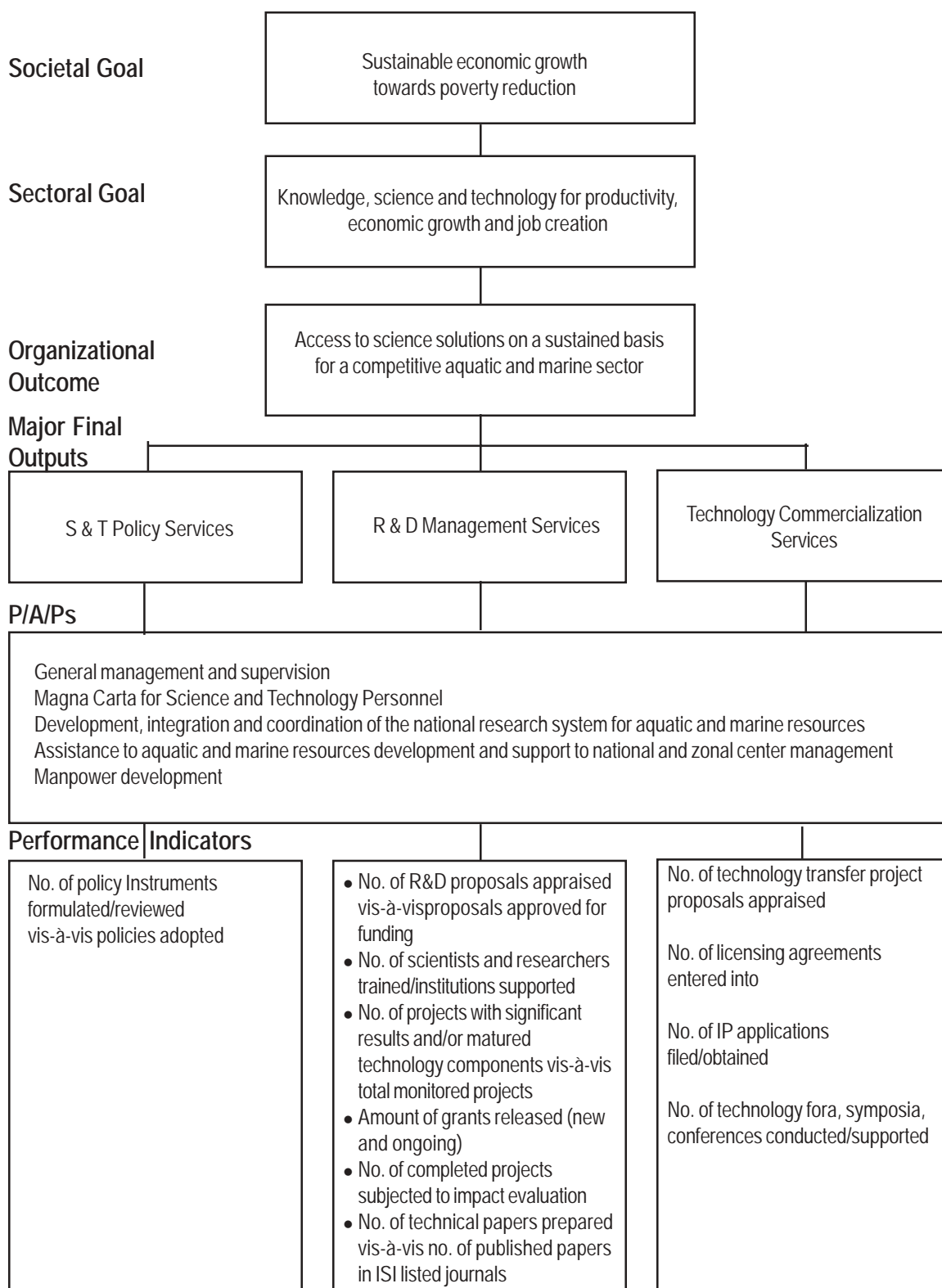
Legal Basis

Executive Order No. 128 (January 30, 1987) reorganized the National Science and Technology Authority (NSTA) into the Department of Science and Technology (DOST), with the Philippine Council for Aquatic and Marine Research and Development (PCAMRD) as one of the Department's attached agencies.

Mandate

The Philippine Council for Aquatic and Marine Research and Development (PCAMRD) formulates strategies, policies, plans, programs and projects for aquatic resources research and development. It is also responsible for programming and allocating government and external funds for aquatic resource research and development, and for monitoring aquatic resources research and development.

LOGICAL FRAMEWORK (PCAMRD)



PERFORMANCE MEASURES AND TARGETS

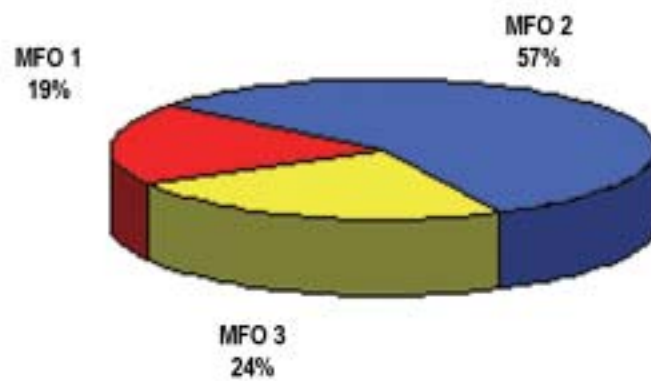
Particulars	FY 2007		FY 2008	
	Target	Amount ('000)	Target	Amount ('000)
MFO 1: S&T Policy Services		7,099		7,442
Performance Indicator: No. of policy instruments formulated/reviewed vis-à-vis policies adopted	9		9	
MFO 2: R&D Management Services		15,339		22,175
Performance Indicators: No. of R&D proposals appraised vis-à-vis proposals approved for funding No. of scientists and researchers trained/institutions supported No. of projects with significant results and/or matured technology components vis-à-vis total monitored projects Amount of grants released (new and ongoing) No. of completed projects subjected to impact evaluation No. of technical papers prepared vis-à-vis no. of published papers in ISI listed journals	30 20 30 1 -		35 20 30 1 -	
MFO 3: Technology Commercialization Services		8,119		9,183
Performance Indicators: No. of technology transfer project proposals appraised vis-à-vis proposals approved for funding No. of licensing agreements entered into No. of IP applications filed/obtained No. of technology fora, symposia, conferences conducted/supported	5 - - 3		5 - - 3	
TOTAL		30,557		38,800

FY 2008 MFO BUDGET

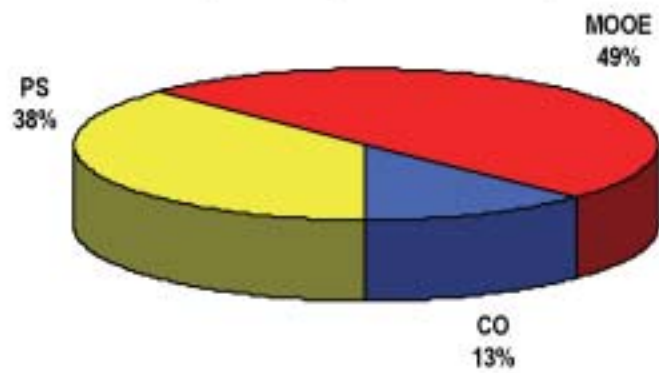
By MFO/By Expense Class

Particulars	(Amounts in Thousand Pesos)				% Share
	PS	MOOE	CO	TOTAL	
MFO 1: S&T Policy Services	4,962	2,480	-	7,442	19%
MFO 2: R&D Management Services	6,439	10,736	5,000	22,175	57%
MFO 3: Technology Commercialization Services	3,193	5,990	-	9,183	24%
TOTAL	14,594	19,206	5,000	38,800	100%
% Share	38%	49%	13%	100%	

By MFO
(Total Budget = P38,800,000)



By Expense Class
(Total Budget = P38,800,000)



Philippine Council for Health Research and Development



The Philippine Council for Health Research and Development (PCHRD) logo follows the basic design of its mother unit, the Department of Science and Technology (DOST). The four circles – representing Excellence, Relevance, Cooperation, and Cost Effectiveness – give an illusion of movement, to signify progress through science and technology. In the midst of the circles is a human head and the staff of Aesculapius (the Roman God of Health) which, in modern times, is used as the symbol of medicine and health. Health is a basic right of every individual that could be achieved through the application of science and technology.

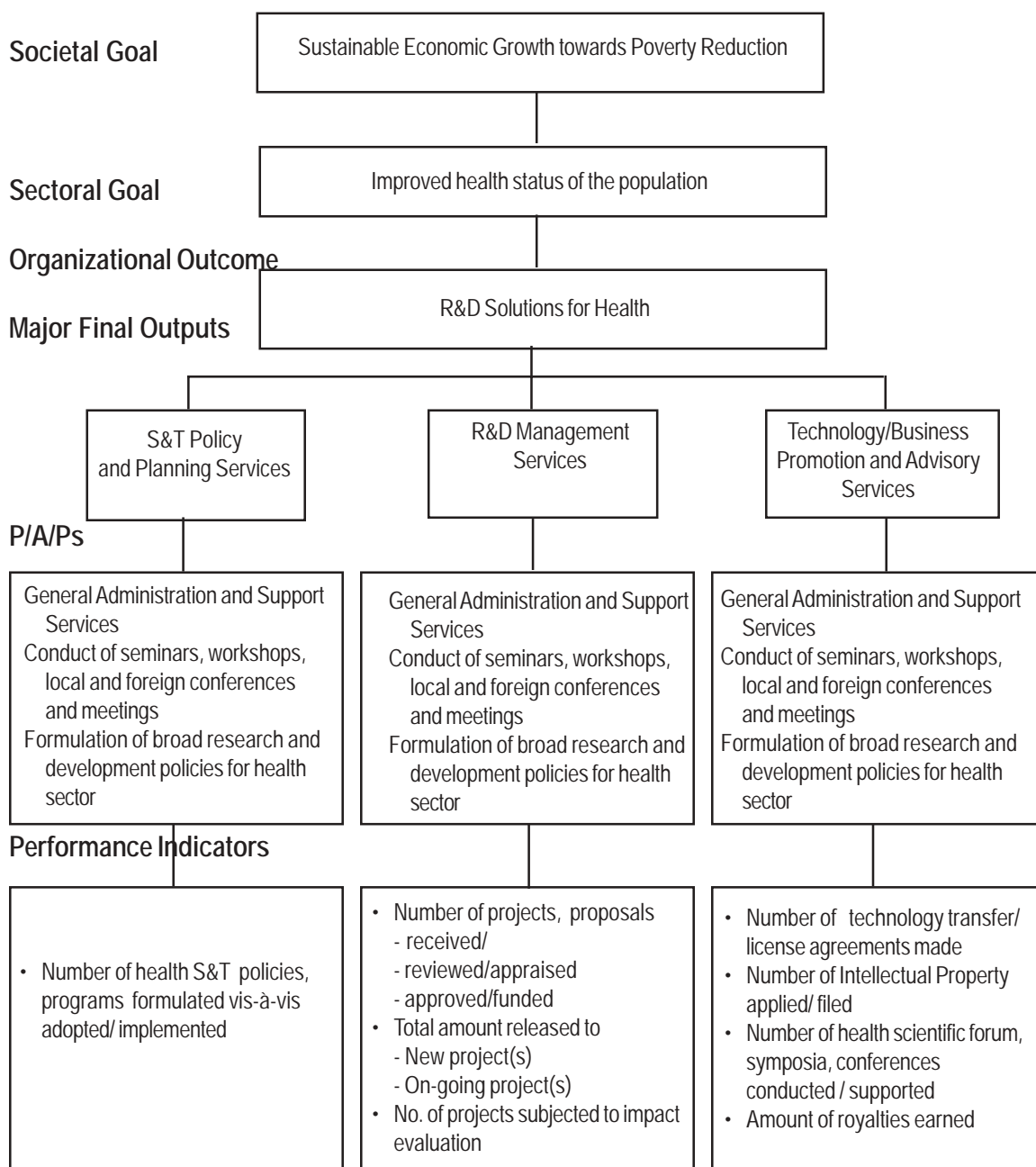
Legal Basis

- **Executive Order No. 784** (March 17, 1982) created the Philippine Council for Health Research and Development (PCHRD) as one of the five sectoral councils of the Department of Science and Technology (DOST).
- **Executive Order No. 128** (January 1987) reaffirmed the status of PCHRD as a sectoral council attached to DOST.

Mandate

The Philippine Council for Health Research and Development (PCHRD) provides central direction and leadership to, as well as coordination of, health S&T efforts. It formulates policies, plans, programs, projects and strategies for health S&T development; programs and allocates government and external fund; and monitors R&D projects.

LOGICAL FRAMEWORK (PCHRD)



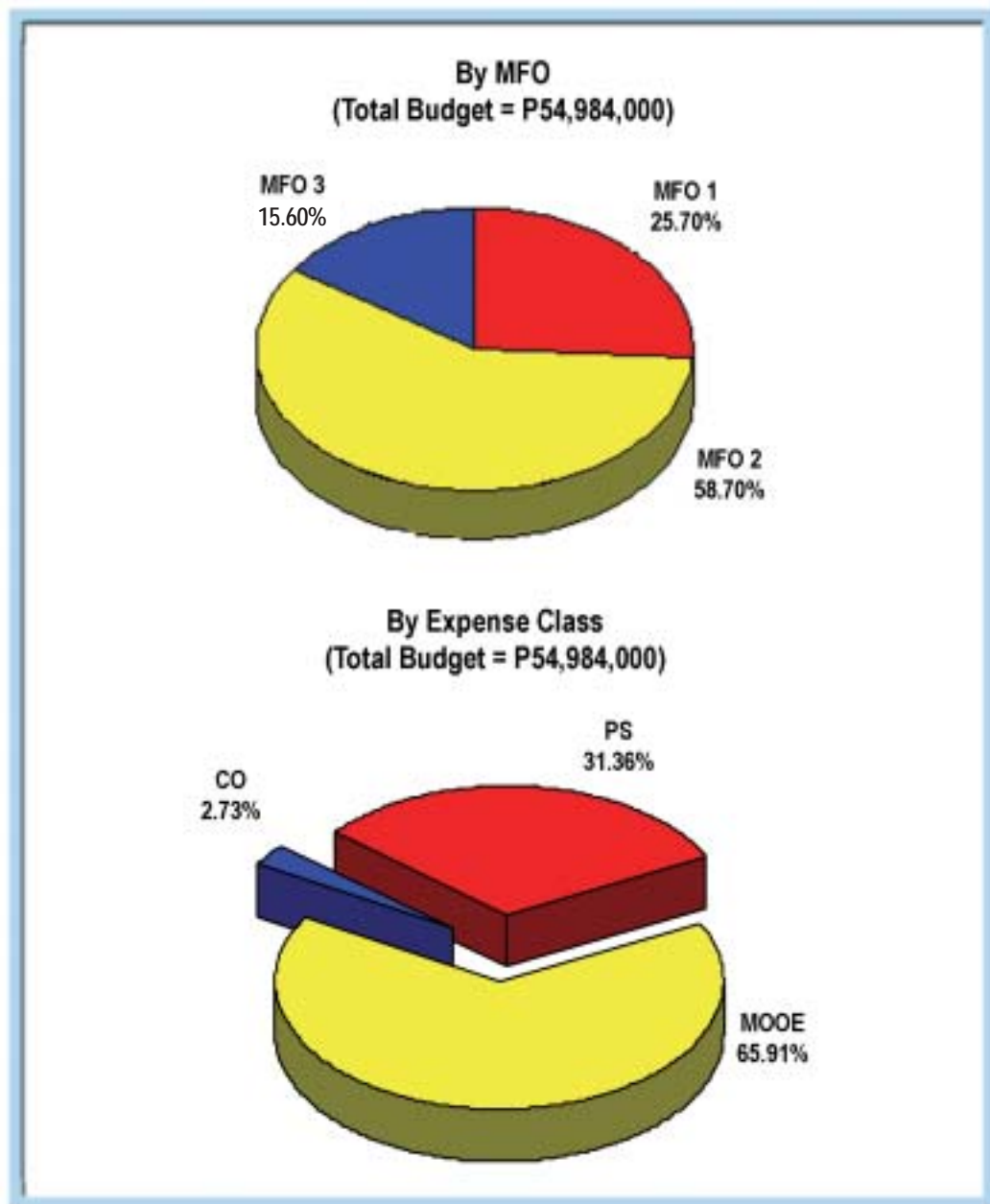
PERFORMANCE MEASURES AND TARGETS

Particulars	FY 2007 (As of June) (In Thousand Pesos)		FY 2008 (In Thousand Pesos)	
	Target	Amount	Target	Amount
MFO 1:		10,663		14,130
S&T Policy and Planning Services				
Performance Indicators:				
Number of health S&T policies, programs formulated	3		4	
adopted / implemented	3		4	
MFO 2:		24,680		32,273
R&D Management Services				
Performance Indicators:				
Number of projects, proposals				
- received	25		38	
- reviewed/ appraised	25		38	
- approved/ funded	10		23	
Total amount released to				
- Number project (s)	-		14.7M	
- On-going project (s)	16.7M		16.7M	
Number of projects subjected to impact evaluation	1		1	
MFO 3:		6,564		8,581
Technology/Business Promotion and Advisory Services				
Performance Indicators:				
Number of technology transfer/license agreements made	6		7	
Number of Intellectual Property applied, filed	6		7	
Number of health scientific forum, symposia, conferences conducted/ supported	26		28	
Amount of royalties earned	2.5M		3M	
Total		41,907		54,984

FY 2008 MFO BUDGET

By MFO/By Expense Class

Particulars	PS	MOOE	CO	TOTAL	% Share
MFO 1: S & T Policy and Planning Services	8,508	5,622		14,130	25.70%
MFO 2: R & D Management Services	5,715	25,058	1,500	32,273	58.70%
MFO 3: Technology/Business Promotion and Advisory Services	3,022	5,559		8,581	15.60%
Total	17,245	36,239	1,500	54,984	100.00%
% Share	31.36%	65.91%	2.73%	100.00%	



Philippine Council for Industry and Energy Research and Development



The Philippine Council for Industry and Energy Research and Development (PCIERD) logo essentially adopts that of the Department of Science and Technology (DOST) with its four circles joined together side by side to form a square. In the center of the square, distinctively PCIERD's own, are light and heavy semi-circle lines representing the industry and energy sectors and the specific areas identified under each. In S&T environment, the lines depict mobility, sustainable development, and fast technological change. The image of a test tube in the light-shaded lines symbolizes research and development (R&D) from where technological and scientific endeavors and the foundation of industrial development both emanate.

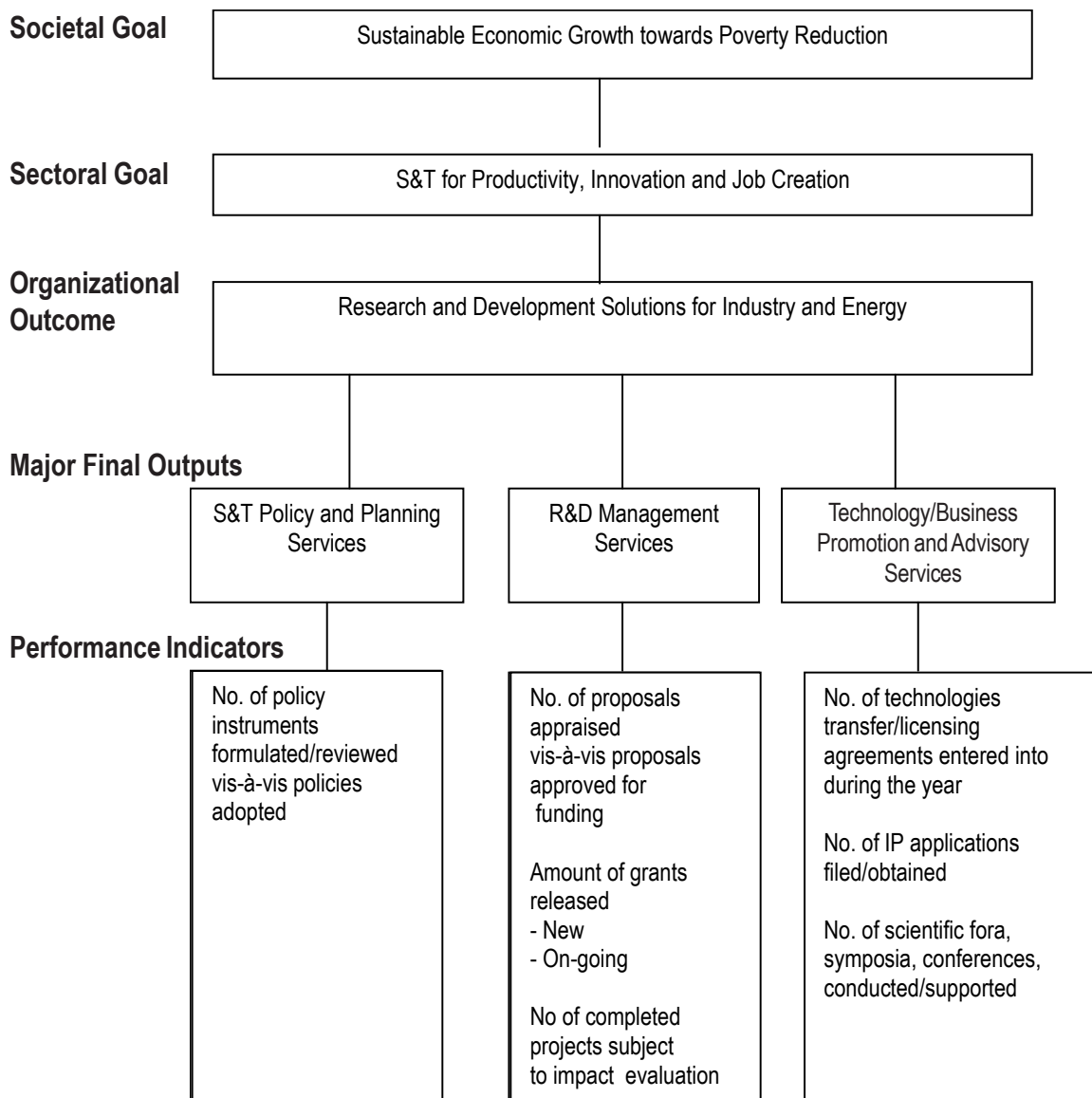
Legal Basis

- **Executive Order No. 784** (March 12, 1982) created the Philippine Council for Industry & Energy Research and Development (PCIERD).
- **Executive Order No. 292** (July 25, 1987) mandated the PCIERD to be one of five sectoral planning councils under the administrative supervision of the Department of Science and Technology.

Mandate

The Philippine Council for Industry and Energy Research and Development (PCIERD) formulates policies, strategies, plans, and programs/projects for S & T development in industry & energy, utilities, infrastructure & environment sectors. It monitors and promotes S & T research with applications in Industry, Energy, Utilities, Infrastructure, and Environment.

LOGICAL FRAMEWORK (PCIERD)



PERFORMANCE MEASURES AND TARGETS

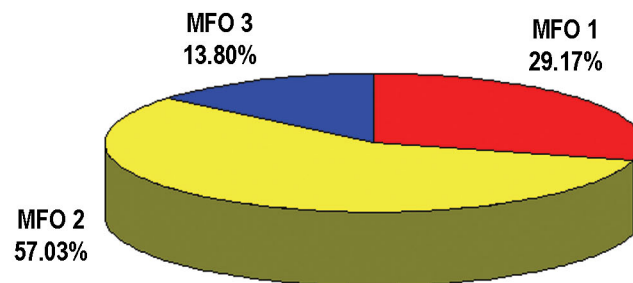
Particulars	FY 2007		FY 2008	
	Target	Amount	Target	Amount
MFO 1 : S&T Policy and Planning Services		10,100.00		11,102.00
Performance Indicators: No of policy instruments formulated/ reviewed vis-à-vis policies adopted	6		6	
MFO 2: R&D Management Services		19,869.00		21,706.00
Performance Indicators: No. of proposals appraised vis-a-vis proposals approved for funding	100		100	
Amount of grants released				
Ongoing	8,651.50		11,350	
New	4,356.50		3,250	
No. of completed projects subjected to impact evaluation	3		3	
MFO 3: Technology/Business Promotion and Advisory Services		5,231.00		5,254.00
Performance Indicators: No. of technology transfer/license agreements made (adaptor)	6		6	
No. of Intellectual Property applied/filed	2		2	
No. of scientific fora/symposiums/ conferences conducted	23		23	
TOTAL		25,100.00		38,062.00

FY 2008 MFO BUDGET

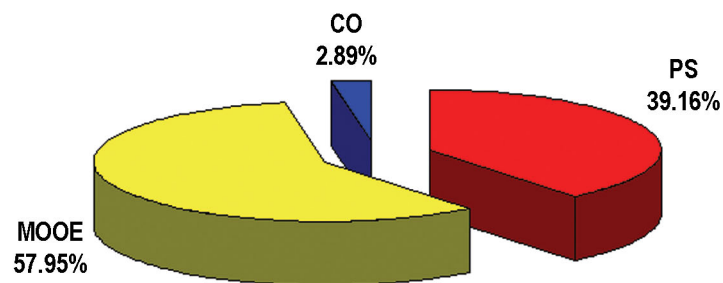
By MFO/By Expense Class
(‘000)

Particulars	PS	MOOE	CO	TOTAL	% SHARE
MFO 1: S&T Policy & Planning Services	5,792.00	5,310.00		11,102.00	29.17%
MFO 2: R&D Management Services	5,646.00	14,960.00	1,100.00	21,706.00	57.03%
MFO 3: Technology/Business Promotion & Advisory Services	3,467.00	1,787.00		5,254.00	13.80%
TOTAL	14,905.00	22,057.00	1,100.00	38,062.00	100.00%
% SHARE	39.16%	57.95%	2.89%	100.00%	

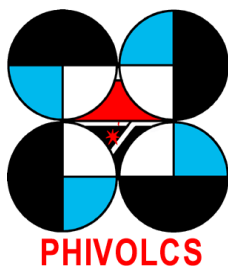
By MFO
(Total Budget = P38,062,000)



By Expense Class
(Total Budget = P38,062,000)



Philippine Institute of Volcanology and Seismology



The Philippine Institute of Volcanology and Seismology (PHIVOLCS) logo is derived basically from the logo of the Department of Science and Technology (DOST) which consists essentially of four circles joined together side by side to form a square. The upper portion of the space in the center of the joined circles is a triangle in red representing an active volcano. The white lines at the lower half, with one line plate going down, represent converging tectonic plates. The red star signifies the epicenter of an earthquake in the subduction zone.

Legal Basis

- **Republic Act No. 766** (1952) created the Commission on Volcanology (COMVOL).
- **Executive Order No. 784** (March 17, 1982) reorganized the National Science Development Board (NSDB) into the National Science and Technology Authority (NSTA), restructuring and renaming the COMVOL to Philippine Institute of Volcanology (PHIVOLC).
- **Executive Order No. 984** (September 17, 1984) transferred the responsibility for Seismology, or the science that deals with earthquakes, which used to be a concern of PAGASA to PHIVOLC, thus renaming the agency to Philippine Institute of Volcanology and Seismology or PHIVOLCS.
- **Executive Order No. 128** (January 30, 1987) reorganized the National Science and Technology Authority (NSTA), structurally and functionally transforming it into the Department of Science and Technology (DOST), with PHIVOLCS as one of the Department's attached agencies.

Mandates

The Philippine Institute of Volcanology and Seismology (PHIVOLCS) is responsible for forecasting volcanic eruptions and earthquakes and determining how they occur and what areas are likely to be affected. It mitigates hazards of volcanic activities through appropriate detection, forecast and warning system, and formulates appropriate disaster-preparedness and mitigation plans.

LOGICAL FRAMEWORK (PHIVOLCS)

Societal Goal

Sustainable Economic Growth Towards Poverty Reduction

Sectoral Goal

Knowledge, science and technology for productivity, economic growth and job creation

Organizational Outcome

Communities made safer from volcanic, seismic and other related geotectonic hazards

Major Final Outputs

Warning and advisory services on volcanic and earthquake hazards

Hazard mapping and risk assessment services

Research and development

Disaster preparedness and risk mitigation services

P/A/Ps

Operations and development of volcanological and geophysical observatories, including volcano observation system

Earthquake monitoring and documentation

Volcanological, seismological and geophysical instrumentation research and development and maintenance

Geology, petrology and geophysical studies of volcanoes, volcanic arcs and terranes, including investigation of on-going and post-eruption deposits

Geological and geophysical studies on active faults, shear zones, landslides, earthquake effects and other related geotectonic phenomena

Volcano eruption prediction research and development of active volcanoes and investigation of other volcano emergencies

Earthquake prediction studies

Studies on vulnerability/ risk vis-à-vis geologic hazards, impact of geologic phenomena and review, update formulation of disaster preparedness plans and reduction action programs

Scientific and technical documentation and information dissemination

Performance Indicators

Number of volcano updates/bulletins/ advisories promptly issued

Number of earthquake bulletins/advisories promptly issued

Number of tsunami bulletins/advisories promptly issued

Number of geological & geophysical events investigated

Number of hazard maps generated/ updated

Number of hazard and risk assessment issued

Number of clients served

- Scientific data requests
- Map requests

Amount of income generated

Number of projects implemented

Number of technical papers prepared vis-à-vis number of papers published in ISI listed journals

Number of R&D collaborative projects with international scientific organization

Number of clients served by type of service

- Disaster preparedness lectures conducted
- Volcano/earthquake / tsunami drills organized / assisted
- Seminar/workshops/ training conducted for various stakeholders
- Educational tours hosted / Visits to agency facilities

Number of new information materials developed

Number of information materials disseminated

Amount of income generated

PERFORMANCE MEASURES AND TARGETS

Particulars	FY 2007			FY 2008	
	Target	Actual (January- June 2007)	Amount (In thousand pesos)	Target	Amount (In thousand pesos)
MFO 1: Warning and advisory services on volcanic and earthquake hazards Performance Indicators: Number of volcano updates/bulletins/advisories promptly issued Number of earthquake bulletins/ advisories promptly issued Number of tsunami bulletins / advisories promptly issued Number of geological & geophysical events investigated	 Demand-driven Demand-driven Demand-driven Demand-driven	 547 92 14 4	 63,271	 Demand-driven Demand-driven Demand-driven Demand-driven	 155,082
MFO 2: Hazard mapping and risk assessment services Performance Indicators: Number of hazard maps generated / updated Number of hazard and risk assessment issued Number of clients served Scientific data requests Map requests Amount of income generated (in pesos)	 28 Demand-driven Demand-driven Demand-driven 140,000	 19 213 42 56 105,030	 14,256	 36 Demand-driven Demand-driven Demand-driven 140,000	 20,007
MFO 3: Research and development Performance Indicators: Number of projects implemented Number of technical papers prepared vis-à-vis number of papers published in ISI listed journals Number of Intellectual Property applied / approved Number of R&D collaborative projects with international scientific organization	 17 (New PI) (New PI) 5	 17 1** 0 4	 7,439	 17 5** 10	 11,349
MFO 4: Disaster preparedness and risk mitigation services Performance Indicators: Number of clients served by type of service* Disaster preparedness lectures conducted Volcano/earthquake/ tsunami drills organized Seminar/workshops/ training conducted for various stakeholders Educational tours hosted/ Visits to agency facilities Number of new information materials developed Number of information materials disseminated Amount of income generated (in pesos)	 Demand-driven Demand-driven Demand-driven Demand-driven 3 3,600 89,000	 1,424 6,600 2,257 6,283 6 2,517 71,133	 11,510	 Demand-driven Demand-driven Demand-driven Demand-driven 5 5,000 89,000	 14,843
TOTAL			96,476		201,281

* By number of participants

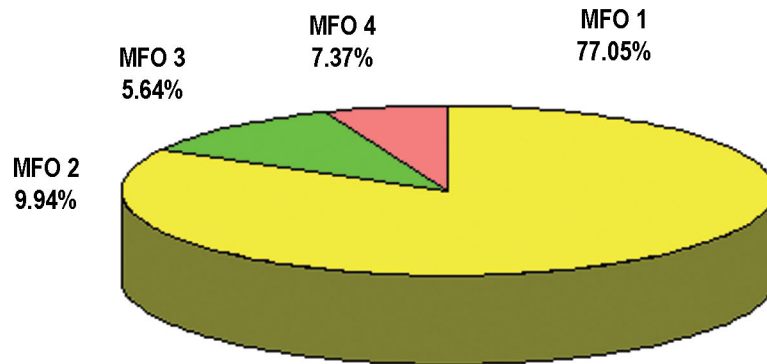
** Technical papers prepared

FY 2008 MFO BUDGET

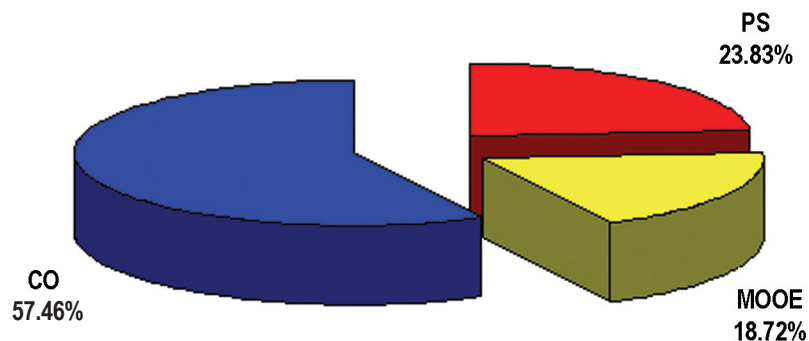
By MFO/By Expense Class

Particulars	PS	MOOE	CO	TOTAL	% Share
MFO 1: Warning and advisory services on volcanic and earthquake hazards	32,850	25,227	97,005	155,082	77.05%
MFO 2: Hazard mapping and risk assessment services	8,017	5,930	6,060	20,007	9.94%
MFO 3: Research and development	3,553	3,736	4,060	11,349	5.64%
MFO 4: Disaster preparedness and risk mitigation services	7,458	3,260	4,125	14,843	7.37%
TOTAL	44,420	34,893	107,125	201,281	100.00%
% Share	23.83%	18.72%	57.46%	100.00%	

By MFO
(Total Budget = P201,281,000)



By Expense Class
(Total Budget = P201,281,000)



Philippine Nuclear Research Institute



The Philippine Nuclear Research Institute (PNRI) logo consists of four circles joined together side by side to form a square which is essentially DOST's logo. The atomic structure symbol and the laurel wreath at the center of the joined circles symbolize the peaceful uses of nuclear science and technology. The logo's three-color scheme represents the unknown (black), truth and enlightenment (white), and progress (blue).

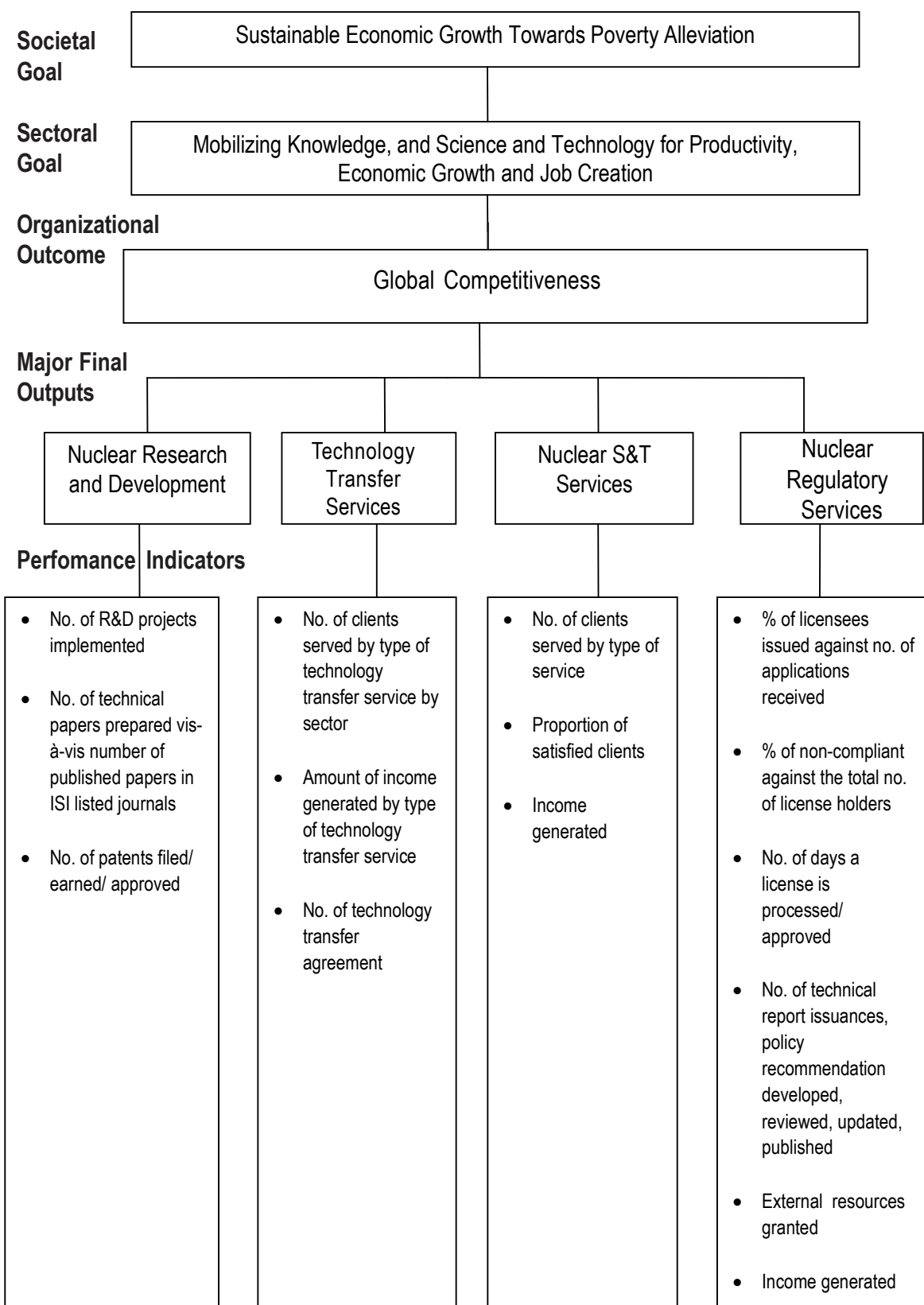
Legal Bases

- **Republic Act 2067** (June 13, 1958), the Science Act of 1958, created the Philippine Atomic Energy Commission.
- **Executive Order No. 128** (January 30, 1987) reorganized the Philippine Atomic Energy Commission to Philippine Nuclear Research Institute.

Mandate

The Philippine Nuclear Research Institute (PNRI) conducts research and development on the application of radiation and nuclear materials, processes and techniques in agriculture, food, health, nutrition and medicine, and in industrial or commercial enterprises, transferring research results to end-users, including through technical extension and training services. It operates and maintains nuclear research reactors and other radiation facilities, and regulates activities relative to production, transfer, and utilization of nuclear and radioactive substances.

LOGICAL FRAMEWORK (PNRI)



PERFORMANCE MEASURES AND TARGETS

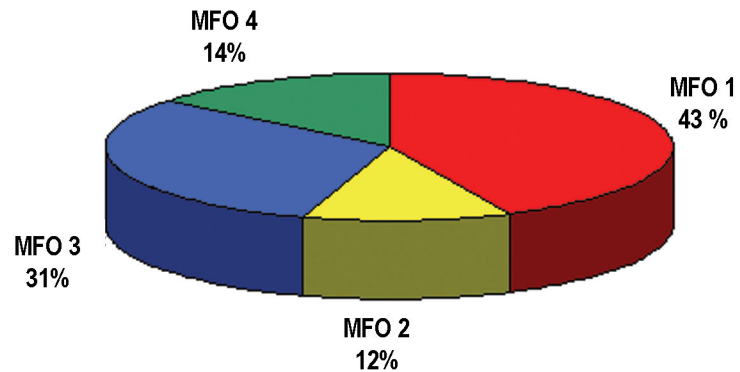
Particulars	FY 2007		FY 2008	
	Target	Amount (P'000)	Target	Amount (P'000)
MFO 1:		37,269		65,841
Nuclear Research and Development				
Nuclear R&D projects implemented	34		34	
No. of technical papers prepared vis-a-vis number of published papers in ISI listed journals	8/2		11/3	
No. of patents/filed/earned/approved	-		1	
Resources generated	20M		25M	
MFO 2:		16,703		18,232
Technology Transfer Services				
No. of clients served	15,000		17,000	
- technical training				
- recipient of information materials				
- S&T promotion activities				
- radiological emergency preparedness drills, exercises and seminars				
- library services				
No. of technology transfer agreements	1		1	
Income generated	500,000		600,000	
- technical training (funds in trust)				
- multi-media				
MFO 3:		26,725		47,247
Nuclear S&T Services				
No. of clients served	55,000		60,000	
- radiation protection				
- gamma irradiation				
- radioactivity analysis				
- radioactive waste management				
- biological tests				
- radioanalytical & related tests				
Income generated	13,816M		13,816M	
- radiation protection				
- gamma irradiation				
- radioactivity analysis				
- radioactive waste management				
- biological tests				
- radioanalytical & related tests				
Clients satisfaction	-		-	
MFO 4:		19,136		21,608
Nuclear Regulatory Services				
No. of licenses issued against no. of applications received	225/250		225/250	
No. of regulations developed and implemented	3		5	
No. of unannounced/announced inspection and audit of licensed facilities	8/200		10/200	
% of non-compliance to regulatory issuances	10%		8%	
Income generated	2,170M		2,170M	
- licensing fees				
- inspection fees				
External resources generated	3.5M		3.0M	
TOTAL		99,833		152,928

FY 2008 MFO BUDGET

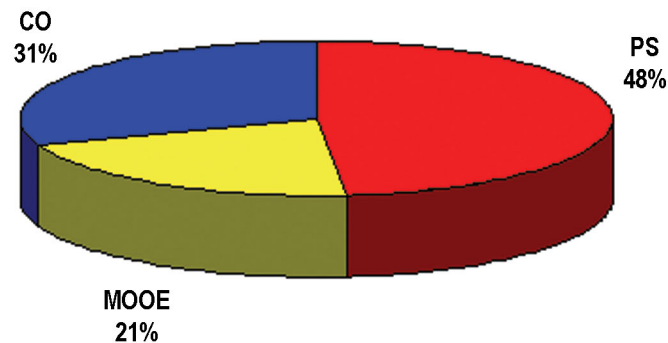
By MFO/By Expense Class

Particulars	PS	MOOE	CO	TOTAL	% Share
MFO 1: Nuclear Research and Development	27,200	11,963	26,678	65,841	43.05%
MFO 2: Technology Transfer Services	13,977	3,302	953	18,232	11.92%
MFO 3: Nuclear S&T Services	17,746	12,061	17,440	47,247	30.90%
MFO 4: Nuclear Regulatory Services	14,900	4,930	1,778	21,608	14.13%
TOTAL	73,823	32,256	46,849	152,928	100%
% Share	48%	21%	31%	100%	

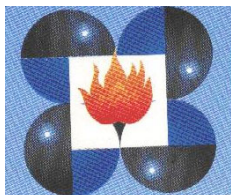
By MFO
(Total Budget = P152,928,000)



By Expense Class
(Total Budget = P152,928,000)



Philippine Science High School



The Philippine Science High School (PSHS) logo features a flame at the center of four circles (paired together), the common symbol of the DOST and its agencies. The flame, the substance of the PSHS logo, symbolizes enthusiasm, ardor, light and warmth. The circle symbolizes unit particles, the subject of science and technology.

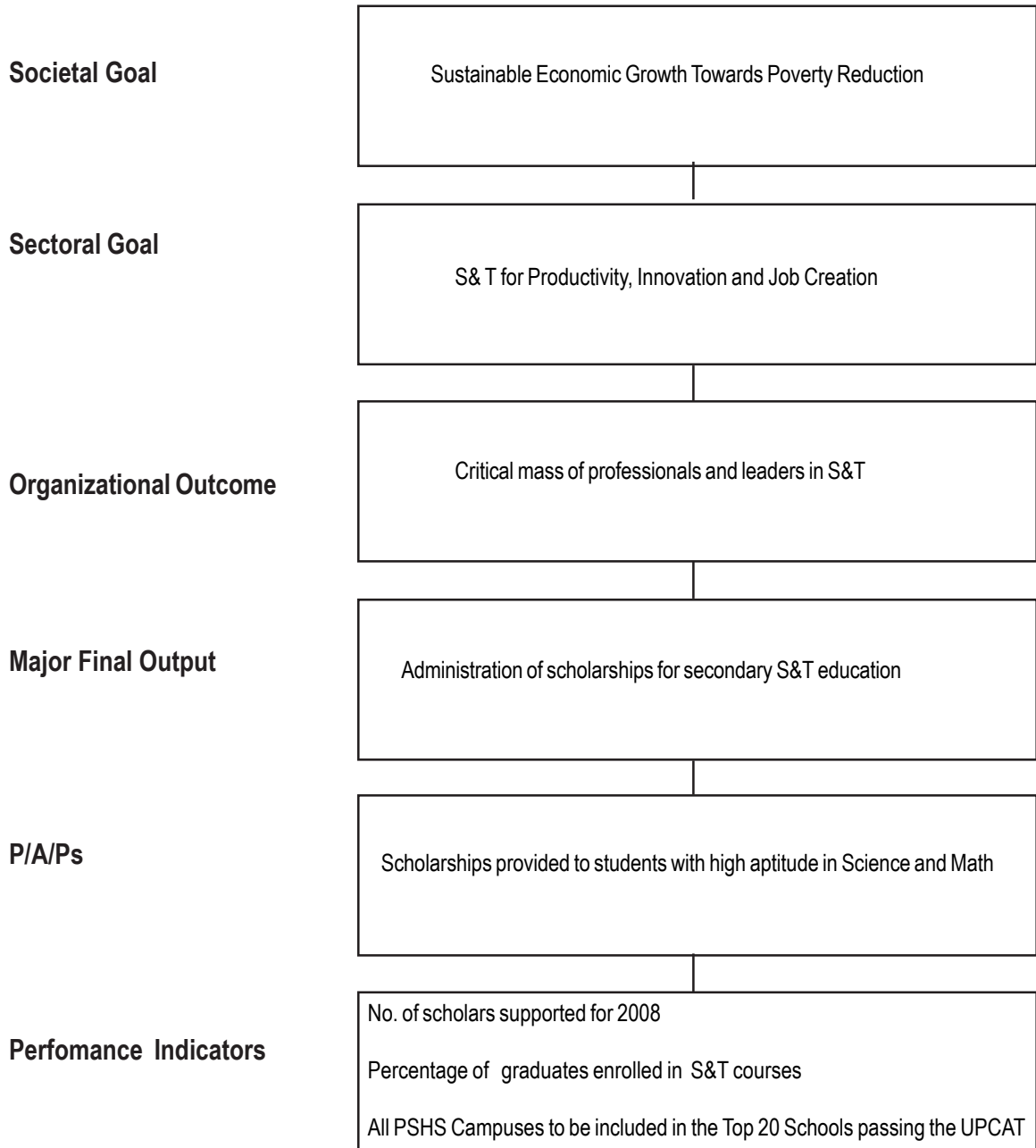
Legal Basis

- **Republic Act No. 3661** (June 22, 1963) established the Philippine Science High School (PSHS).
- **Republic Act No. 8496** (February 12, 1998), the PSHS System Law, established the PSHS System (to include, in addition to the PSHS Main Campus, the various campuses in several parts of the country), unifying all existing campuses into a single system of governance and management.
- **Republic Act No. 9026** (March 12, 2001) amended RA 8496, strengthening the governance of the PSHS System and defining its scope.

Mandate

The Philippine Science High School (PSHS) offers on a scholarship basis, a secondary course with special emphasis on subjects pertaining to the sciences with the end in view of preparing its students for a science career.

LOGICAL FRAMEWORK (PSHS)



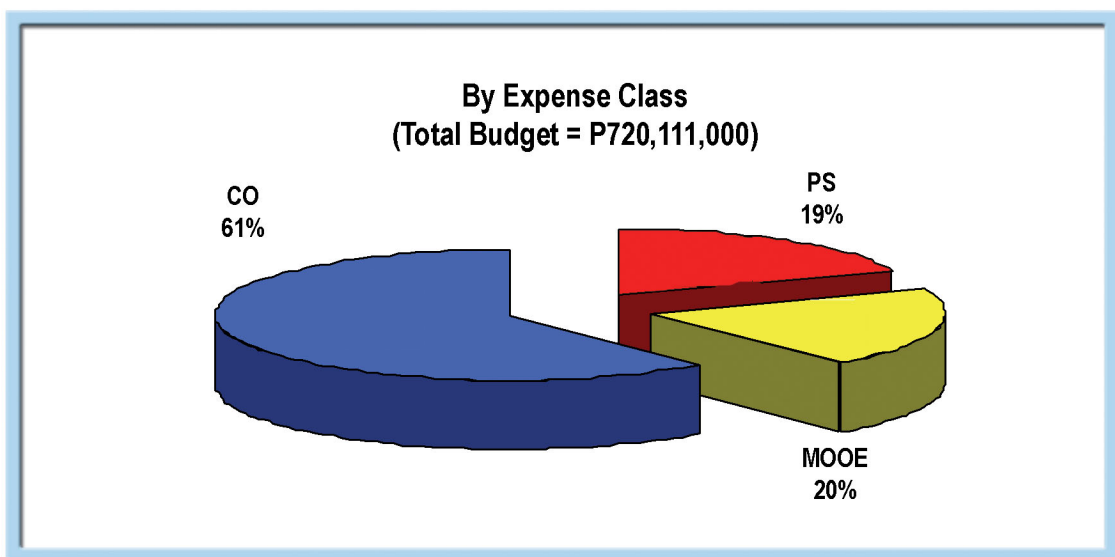
PERFORMANCE MEASURES AND TARGETS

PARTICULARS	FY 2007		FY 2008	
	Target	Amount	Target	Amount
MFO Administration of scholarships for Secondary S& T education	3,158	423,378,000	3,370	720,111,000
Performance Indicators				
No. of scholars supported				
% of graduates enrolled in S& T courses	98%		98%	
All PSHS Campuses to rank in the top 20 schools in the UPCAT	100%		100%	
% of PSHS graduates passing the UPCAT	90%		90%	
TOTAL		423,378,000		720,111,000

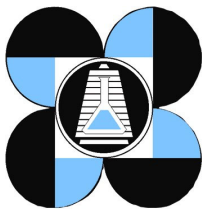
FY 2008 MFO BUDGET

By MFO/By Expense Class

Particulars	PS	MOOE	CO	Total	% Share
MFO Administration of scholarships for secondary S&T education	140,267,000	141,851,000	437,993,000	720,000.00	100%
TOTAL	140,267,000	141,851,000	437,993,000	720,111,000	
% Share	19%	20%	61%	100%	



Philippine Textile Research Institute



The Philippine Textile Research Institute (PTRI) logo features a cone in the center of the joined circles symbolizing the textile and allied industries to which the PTRI's services and research facilities are directed. Superimposed on the cone is a laboratory flask symbolizing the role of research in the pursuance of PTRI's goals, while the blue color of the logo signifies the service-oriented thrust of the Institute.

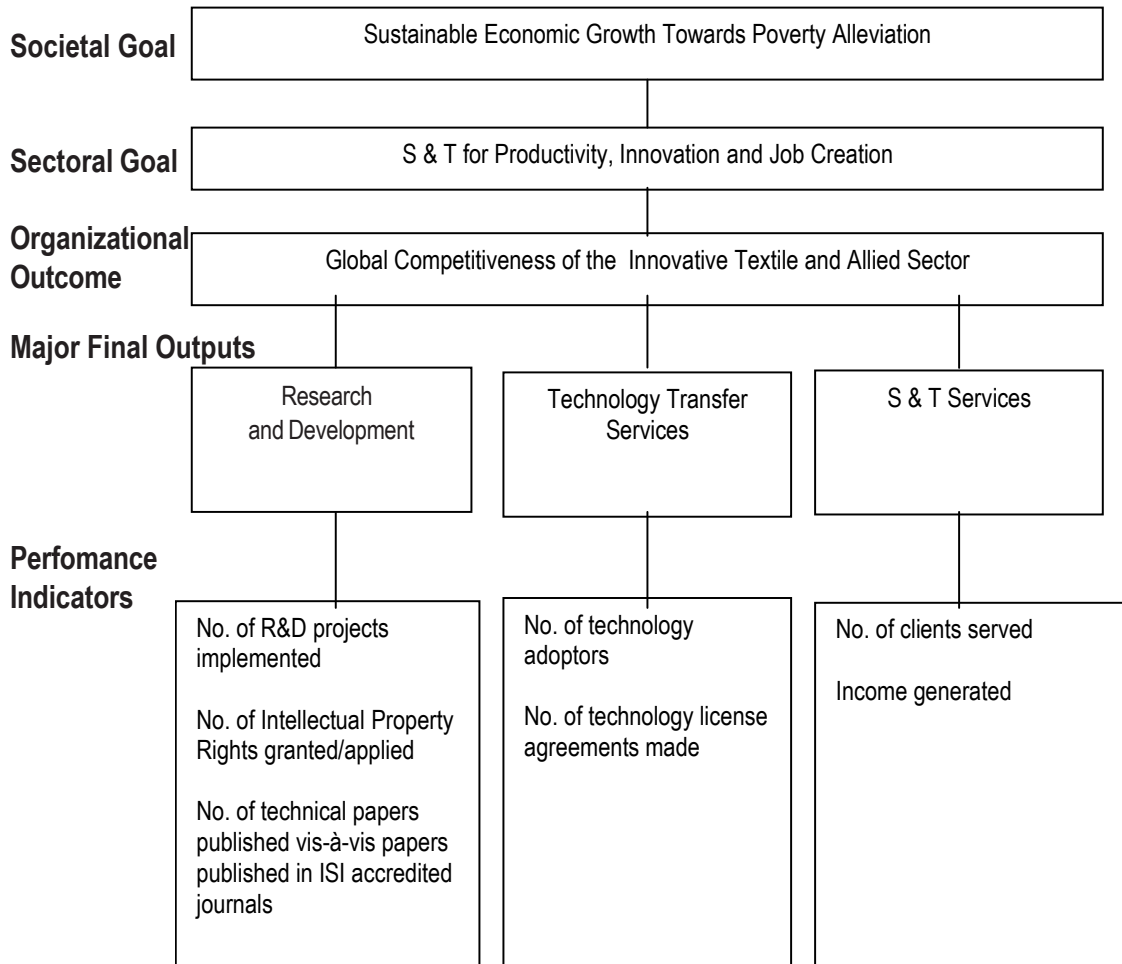
Legal Basis

- **Resolution 246 R.3** (January 3, 1967) established the Philippine Textile Research Institute (PTRI) as a line agency of the National Science Development Board (NSDB).
- **Executive Order No. 128** (January 30, 1987) reorganized the NSDB to the Department of Science and Technology (DOST) and the agencies, including PTRI, under it.

Mandate

The Philippine Textile Research Institute (PTRI) conducts applied research and development for the textile industry sector. In fulfilling this mandate, it undertakes the transfer of completed researches to end-users or via linkage units of other government agencies. It provides technical services and conducts training programs on the concerns of the sector.

LOGICAL FRAMEWORK (PTRI)



PERFORMANCE MEASURES AND TARGETS

Particulars	FY 2007		FY 2008	
	Target	Amount (P'000)	Target	Amount (P'000)
MFO 1:		20,143		23,201
Research and Development				
Performance Indicators:				
No. of R&D projects implemented	8		10	
No. of IPs filed/granted	1		1	
No. of technical papers developed/ published in internationally referred journals	6 / 0		6/ 1	
MFO 2:		7,651		9,994
Technology Transfer Services ¹				
Performance Indicators:				
No. of technology adapters	65 ²		26 ³	
No. of technology license agreements made	0		0	
MFO 3:		21,063		24,857
S & T Services				
Performance Indicators:				
No. of clients served	2,300 ⁴		266 ⁵	
- Testing and Calibration				
Income generated (P '000)	2,277		2,460	
TOTAL		48,857		58,052

¹ Technology transfer services include the conduct of training courses, rendering consulting services, administering educational and company tours, aside from the typical granting of licenses on particular technologies developed.

² The figure represents established enterprises, budding entrepreneurs, students and other interested individuals. It takes into account the frequencies where a technology transfer activity takes place.

³ In consideration of the recently harmonized performance indicators (PIs) for the research and development institutes (RDIs), only enterprise/company clients are taken into account, regardless of the frequency when a technology transfer activity takes place.

⁴ The figure represents clients either as enterprises, students, or individuals. The counting mechanism used takes into account the frequency by which testing and calibration services are rendered.

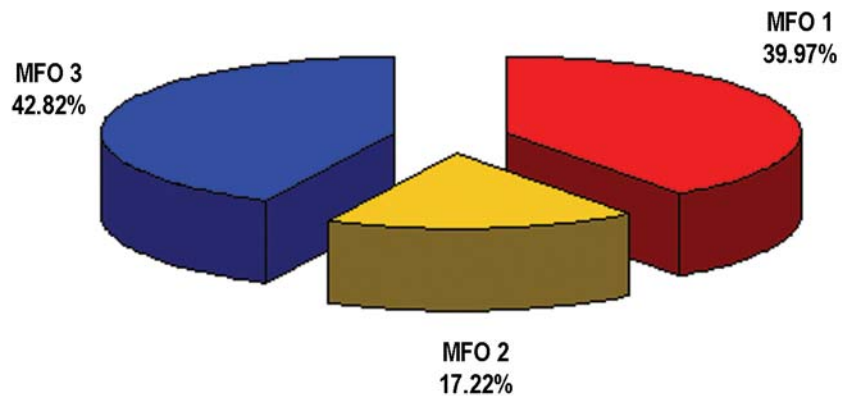
⁵ By virtue of the recent developments in the harmonized PIs for the RDIs, only enterprises/companies are considered. The frequency by which the services are availed of are disregarded.

FY 2008 MFO BUDGET

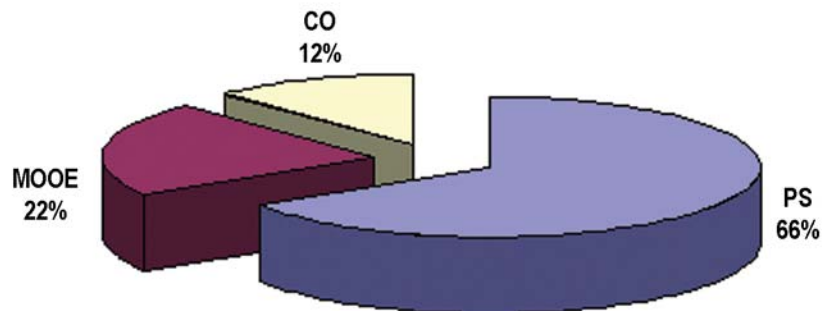
By MFO/By Expense Class (P'000)

Particulars	PS	MOOE	CO	TOTAL	% Share
MFO 1: Research and Development	16,050	5,424	1,727	23,201	39.97%
MFO 2: Technology Transfer Services	5,757	2,460	1,777	9,994	17.22%
MFO 3: S & T Services	16,530	4,716	3,611	24,857	42.82%
TOTAL	38,337	12,600	7,115	58,052	100%
% SHARE	66%	22%	12%	100%	

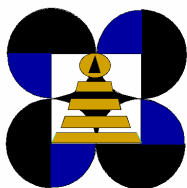
By MFO (Total Budget = P58,052,000)



By Expense Class (Total Budget = P58,052,000)



Science Education Institute



The Science Education Institute (SEI) logo, composed of four circles representing the four guiding principles of S&T development: Excellence, Relevance, Cooperation, and Cost-effectiveness, takes off from the logo of the Department of Science and Technology (DOST) to which SEI is attached as a service agency. The distinct element for SEI as a DOST agency is the superimposed figure at the center, where the circles join, consisting of four gold horizontal lines and a circle with a triangle inside it, the whole figure representing man's ultimate quest for knowledge. The gold color represents knowledge and education as wealth and treasure.

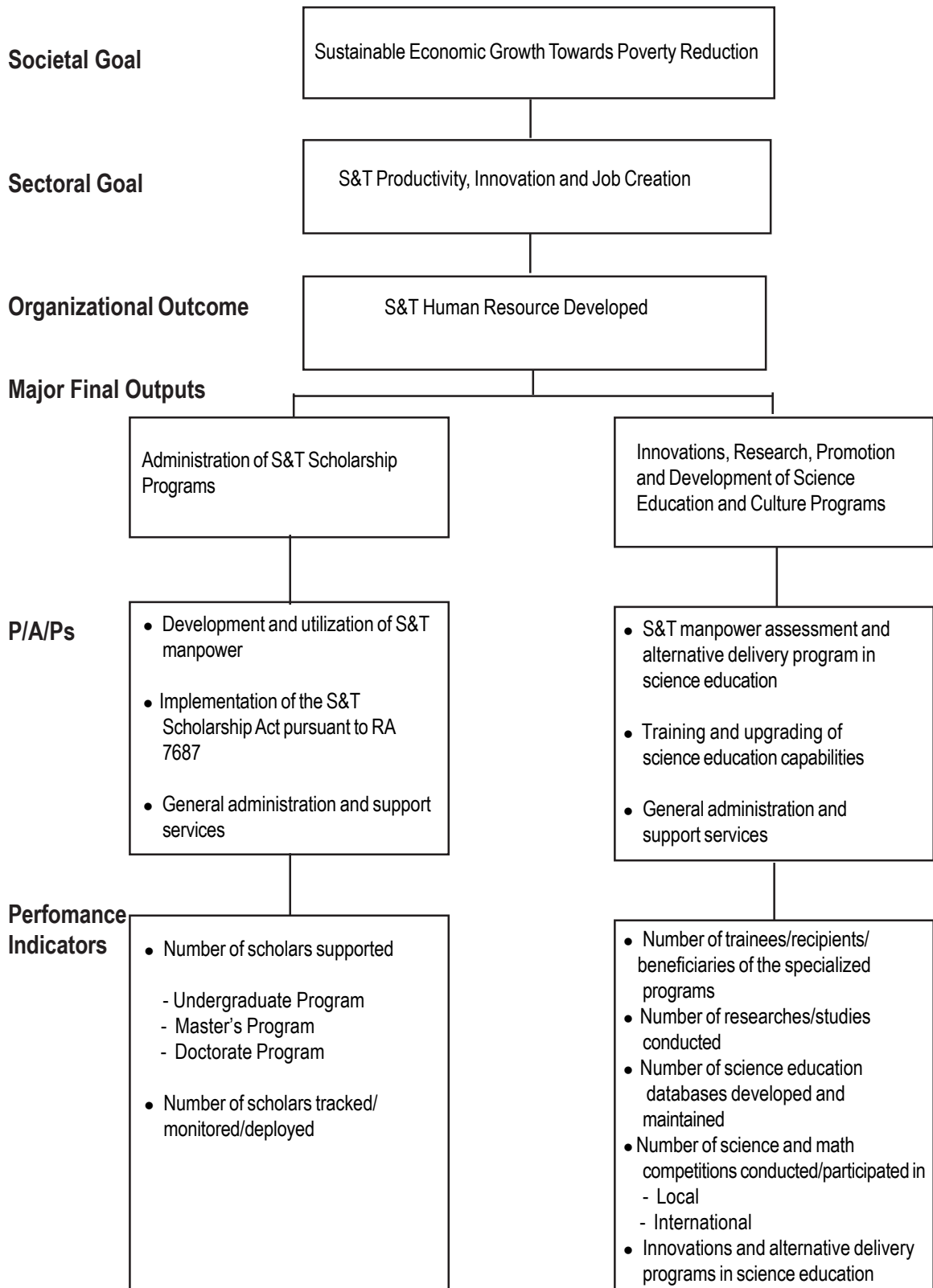
Legal Basis

Executive Order No. 128 (January 30, 1987), otherwise known as the Reorganization Act of the National Science and Technology Authority, created the Science Education Institute.

Mandates

The Science Education Institute (SEI) formulates plans and establishes programs and projects for the promotion and development of science and technology education and training in the field of science and technology in coordination with other institutions of learning. It undertakes science and technology manpower development, and administers scholarships, awards, and grants.

LOGICAL FRAMEWORK (SEI)



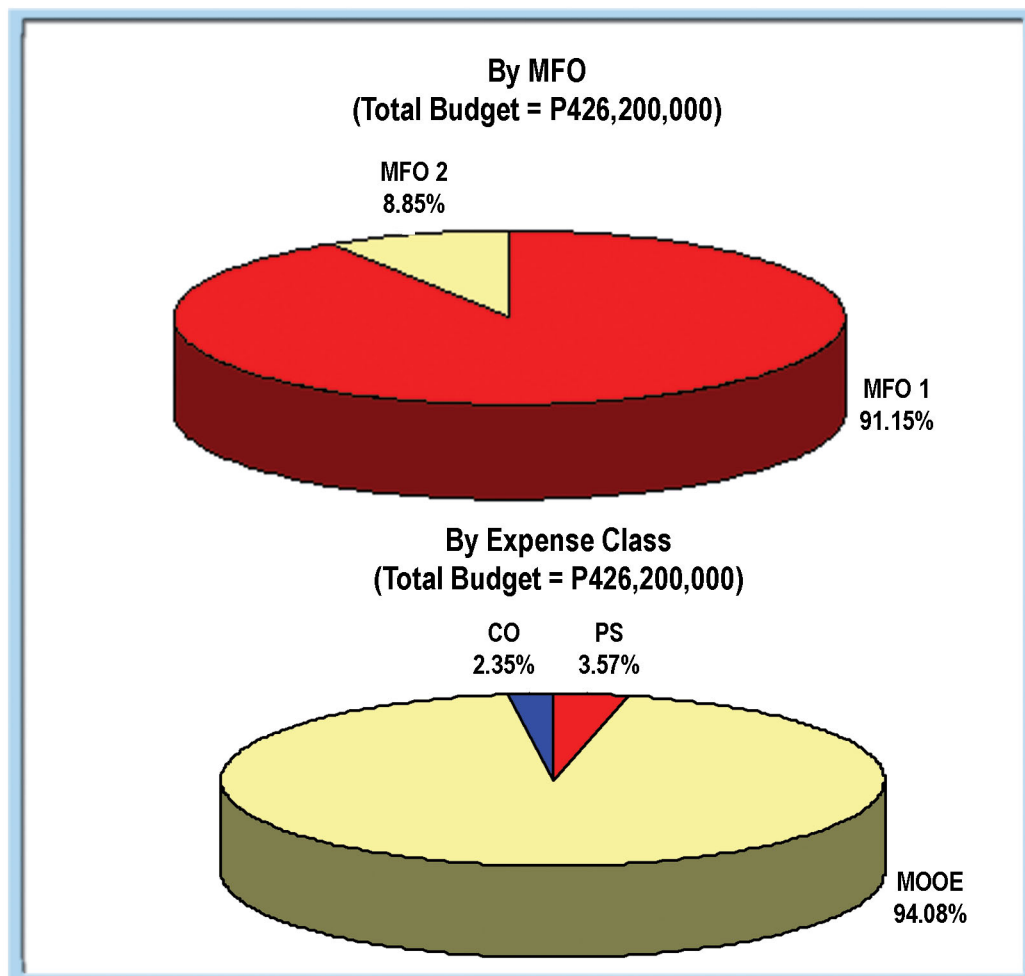
PERFORMANCE MEASURES AND TARGETS

Particulars	FY 2007		FY 2008	
	Target	Amount	Target	Amount
MFO 1		379,597		388,480
Administration of S&T Scholarship Programs				
Performance Indicators:				
• Number of scholars supported				
- Undergraduate Program	9,800		9,800	
- Master's Program	113		130	
- Doctoral Program	51		80	
• Number of scholars tracked/monitored/deployed	7,590		8,000	
MFO 2		37,285		37,720
Innovations, Research, Promotion and Dev't. of Science Education and Culture Programs				
Performance Indicators:				
• Number of trainees/recipients/beneficiaries of the specialized programs				
- e-Training	450		450	
- Microcomputers Training	30		30	
- Robotics Applications in Teaching High School Physics	90		90	
- Facilitators' Training on Science and Math	40		40	
Investigations: Level II				
• Number of researches/studies conducted	4		4	
• Number of science education databases developed/maintained	14		14	
• Number of science and math competitions conducted/ participated in:				
- Local	3		3	
- International	2		2	
• Innovations and alternative delivery programs in science education	500		500	
- Innovative materials developed	scripts		lessons digitized	
- Mobile IT Classrooms	5 Mobile IT Class- rooms		5 Mobile IT Class- rooms	
Total		416,882		426,200

FY 2008 MFO BUDGET

By MFO/By Expense Class

Particulars	PS	MOOE	CO	TOTAL	% Share
MFO 1					
Administration of S&T Scholarship Programs	8,846	369,634	10,000	388,480	91.15%
MFO 2					
Innovations, Research, Promotion and Development of Science Education and Culture Programs	6,374	31,346	-	37,720	8.85%
Total	15,220	400,980	10,000	426,200	
% Share	3.57%	94.08%	2.35%		100.00%



Science and Technology Information Institute



The Science and Technology Information Institute (STII) logo consists of four tangential circles cut away by each of their perpendicular radii to form a square at its center. The four circles project an image of movement to signify progress through S&T. The center design depicts the human mind at work. Half-circles above the solid circle denote brain activity, which is stimulated by information and knowledge. Half-circles represent knowledge that is disseminated.

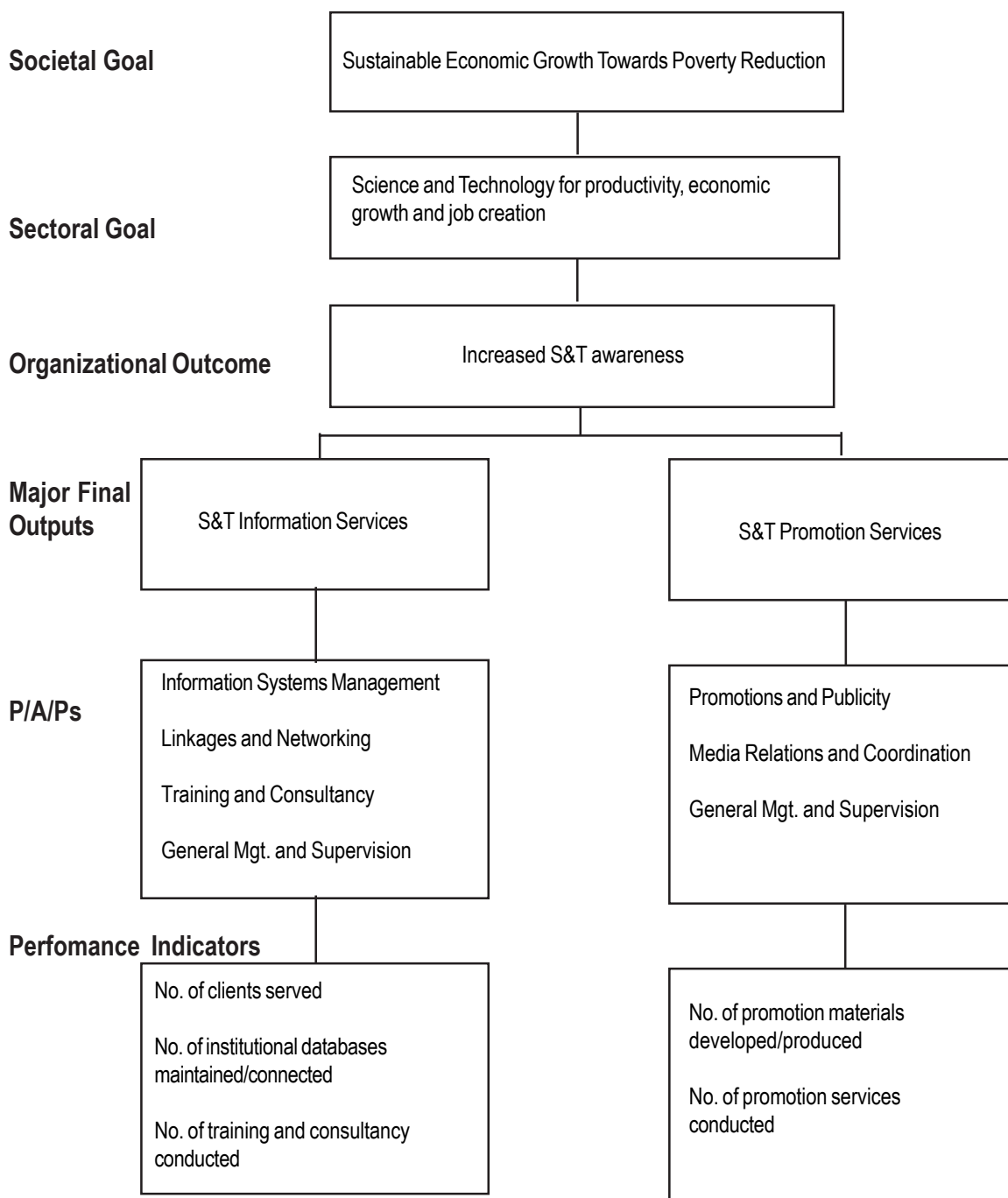
Legal Basis

Executive Order No. 128 (January 30, 1987) transformed the STII as the information and marketing arm of the Department of Science and Technology (DOST).

Mandate

The Science and Technology Information Institute (STII) takes the lead in information science and technology training. It establishes and maintains a science and technology databank and library, and disseminates science and technology information.

LOGICAL FRAMEWORK (STII)



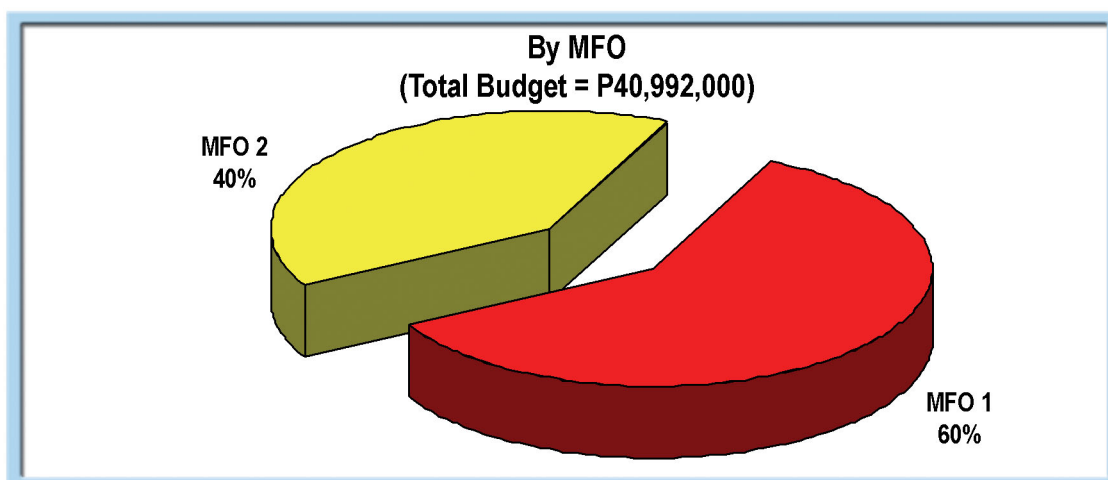
PERFORMANCE MEASURES AND TARGETS

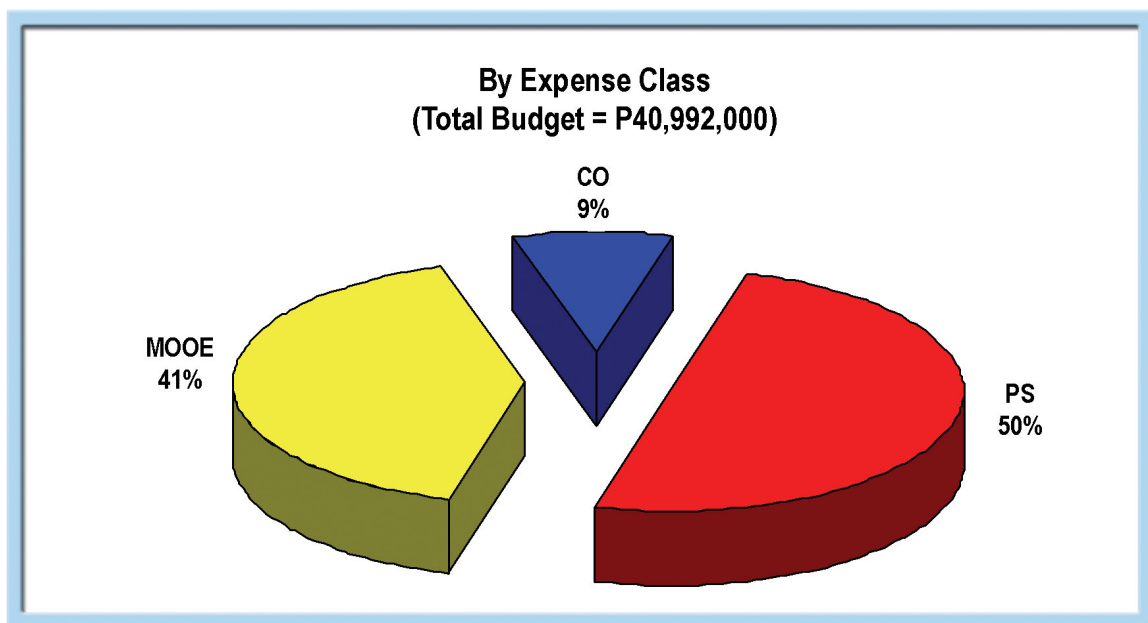
Particulars	FY 2007		FY 2008	
	TARGET	AMOUNT	TARGET	AMOUNT
MFO 1		17,324		24,424
S & T Information Services				
Performance Indicators:				
No. of clients served	154,000		180,050	
No. of institutional databases maintained/connected	29		92	
No. of training & consultancy conducted	11		15	
MFO 2		17,243		16,568
S & T Promotion Services				
Performance Indicators:				
No. of promotion materials developed/produced	498		600	
No. of promotion services conducted	172		235	
TOTAL		34,567		40,992

FY 2008 MFO BUDGET

By MFO/By Expense Class

Particulars	PS	MOOE	CO	TOTAL	% Share
MFO 1: S & T Information Services	10,709	10,290	3,425	24,424	60%
MFO 2: S & T Promotion Services	9,869	6,699		16,568	40%
TOTAL	20,578	16,989	3,425	40,992	
% Share	50%	41%	9%		100%





Technology Application and Promotion Institute (TAPI)



The Technology Application and Promotion Institute (TAPI) circular logo and the diamond-like forms stand for knowledge of science as a whole, and conform to the totality of the S&T community represented by DOST. The arrows projecting in various directions towards the agency's clientele in a rotation-like movement, suggest that TAPI disseminates and promotes the application of science and technology in different areas of business and undertakings.

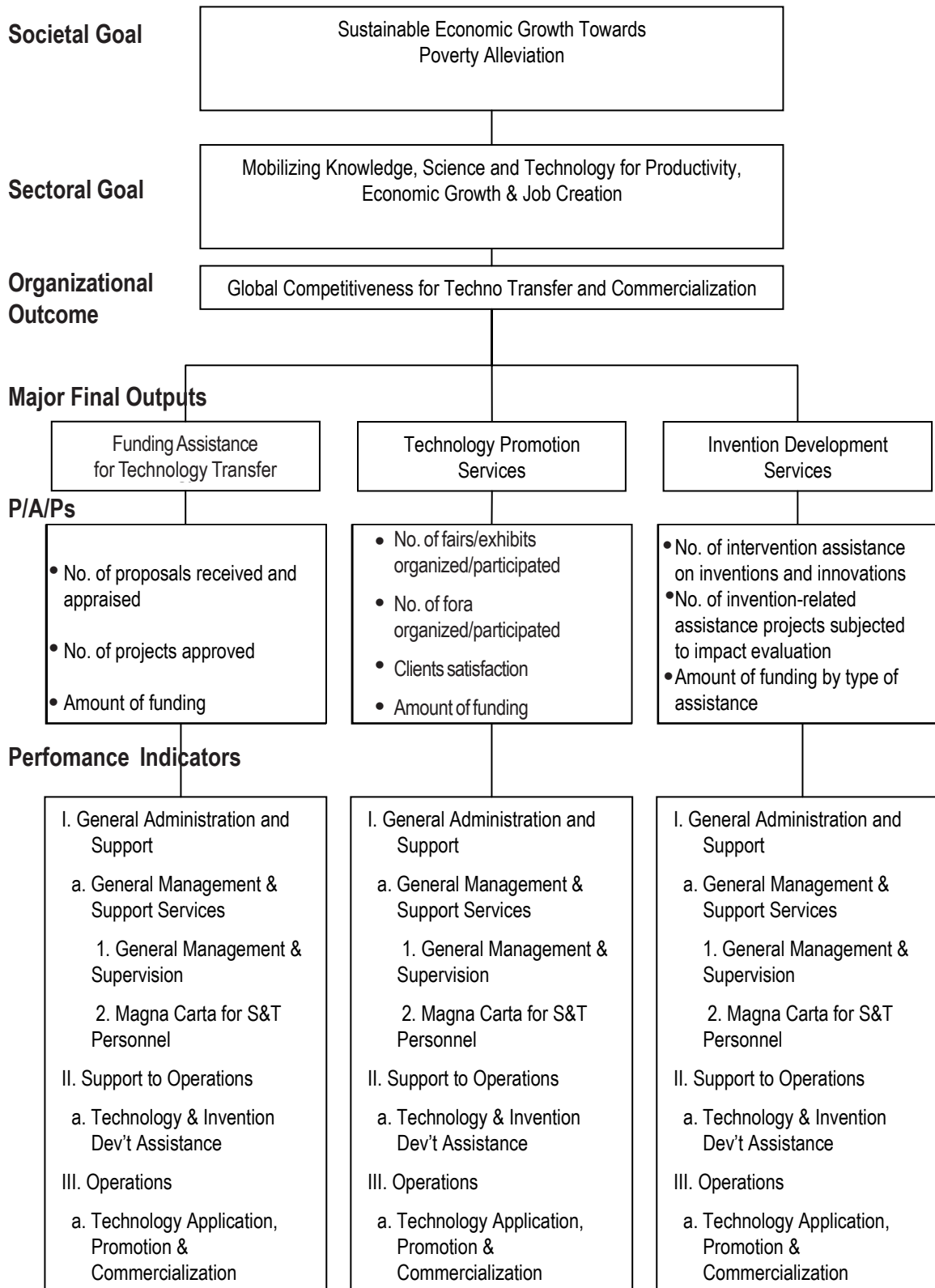
Legal Basis

Executive Order No. 128 (January 30, 1987), Reorganizing the National Science and Technology Authority (NSTA), provided for the Technology Application and Promotion Institute (TAPI) as one of NSTA's attached agencies.

Mandate

The Technology Application and Promotion Institute (TAPI) is the implementing arm of DOST in promoting the commercialization of technologies and in marketing the services of the other operating units of the Department. It undertakes contract research, particularly at pilot plant and semi-commercial stage; provides technical consultancy, including engineering design services, patenting and licensing services; and provides grants and/or venture financing for new and emerging projects. It administers the Invention Development Assistance Fund (IDAF) for the initial experiments and prototype development and other invention development-related activities, and the Inventors Guarantee Fund (IGF) for assisting inventors in the development and commercialization of inventions.

LOGICAL FRAMEWORK (TAPI)



PERFORMANCE MEASURES AND TARGETS

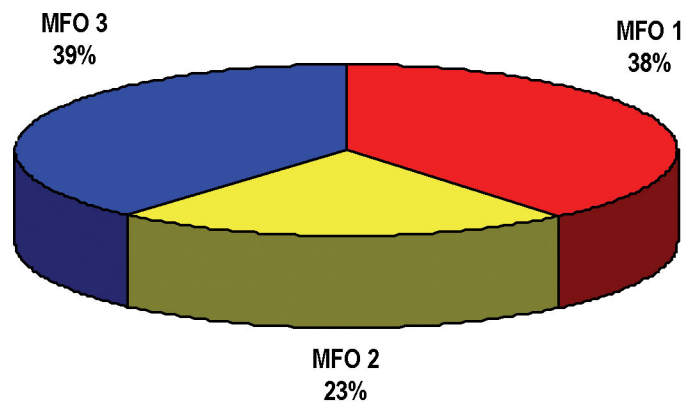
Particulars	FY 2008	
	Target	Amount
MFO 1: Funding Assistance for Technology Transfer		24,445
No. of proposals received and appraised	150	
No. projects approved	40	
Amount of funding	--	
MFO 2: Technology Promotion Services		14,234
No. of fairs/exhibits organized/participated	6	
No. of fora organized/participated	8	
Amount of funding	--	
MFO 3: Invention Development Services		24,234
No. of proposals received and appraised	54	
No. of intervention assistance on inventions and innovations	30	
No. of invention-related assistance projects subjected to impact evaluation	10	
Amount of funding by type of assistance	--	
TOTAL		62,913

FY 2008 MFO BUDGET

By MFO/By Expense Class

Particulars	PS	MOOE	CO	TOTAL	% Share
MFO 1 Funding Assistance for Technology Transfer	7,455	16,990	--	24,445	38.86%
MFO 2 Technology Promotion Services	7,456	6,778	--	14,234	22.62%
MFO 3 Invention Development Services	7,456	6,778	10,000	24,234	38.52%
TOTAL	22,367	30,546	10,000	62,913	
% Share	35.55%	48.55%	15.89%		100.00%

By MFO
(Total Budget = P62,913.00)



By Expense Class
(Total Budget = P62,913.00)

