



## Philippine Overseas Employment Administration

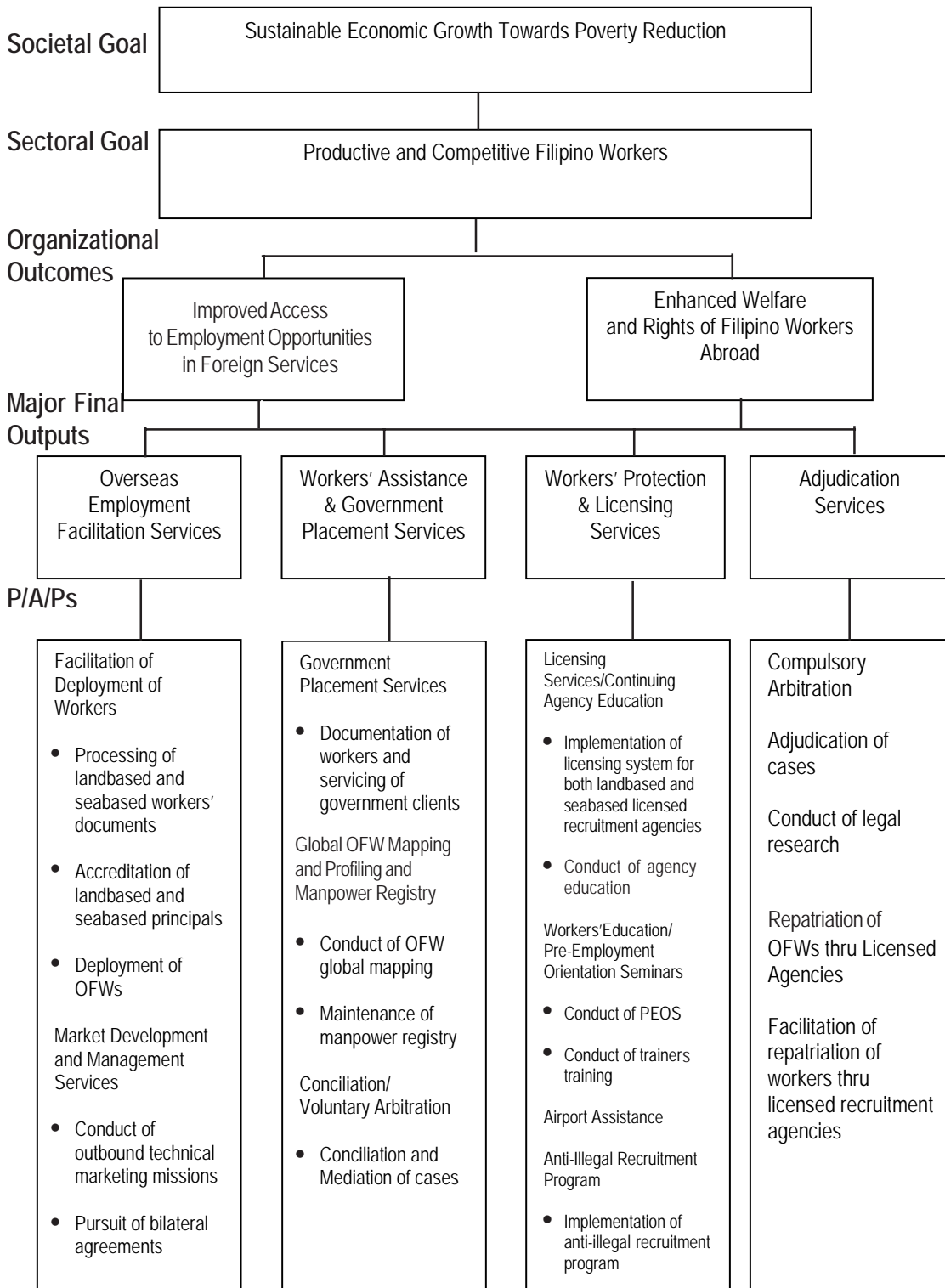
### Legal Basis

- **Executive Order No. 797** (May 1, 1982) created the Philippine Overseas Employment Administration (POEA) by integrating under it the functions of the Overseas Employment Development Board, the National Seamen Board, and the overseas employment functions of the Bureau of Employment Service.
- **Executive Order No. 247** (July 24, 1987) reorganized the POEA and expanded its powers and functions to enhance its effectiveness in responding to changing market and economic conditions and to strengthen the worker protection and regulation components of the overseas employment program.
- **Republic Act No. 8042** (June 7, 1995), Migrant Workers and Overseas Filipinos Act of 1995, instituted policies on overseas employment and established a higher standard of protection and promotion for the welfare of migrant workers, their families, and overseas Filipinos in distress.
- **Republic Act No. 9422** (April 10, 2007) amended RA 8042 and strengthened POEA's regulatory functions, expanding its duties to include providing information on the human rights of workers and ensuring that the development of OFWs are restricted to countries with whom the Philippines has bilateral agreements.

### Mandate

The Philippine Overseas Employment Administration (POEA) is mandated to manage the country's overseas employment program.

## LOGICAL FRAMEWORK (POEA)



**PERFORMANCE MEASURES AND TARGETS**  
(Amounts in Thousand Pesos)

Particulars	FY 2007	FY 2008	FY 2009
	Actual/Amount	Target/Amount	Target/Amount
<b>MFO 1</b>			
<b>Overseas Employment Facilitation Services</b>	<b>70,668</b>	<b>67,174</b>	<b>79,654</b>
Facilitation of Deployment of Workers to Global Market	70,668	67,174	79,654
No. of employment contracts processed	1,260,321	1,300,000	1,400,000
No. of workers deployed	1,077,623	1,000,000	1,000,000
No. of foreign principals accredited/registered	19,954	20,000	22,000
No. of job orders approved	658,154	633,608	465,000
<b>MFO 2</b>			
<b>Workers' Assistance and Government Placement Services</b>	<b>67,226</b>	<b>64,669</b>	<b>75,370</b>
Government Placement Services	33,303	32,219	38,187
No. of workers placed thru govt. hiring facility	8,625	11,000	11,000
Global OFW Mapping and Profiling Manpower Registry	22,036	21,076	23,114
No. of country destinations completed for OFW mapping and profiling	15	26	40
No. of worker-applicants registered	43,268	50,000	90,956
No. of skills/manpower profiled	40,286	50,000	55,000
No. of jobs fair facilitated	364	200	794
Conciliation Services	11,887	11,374	14,069
No. of cases disposed	2,905	3,600	3,500
Disposition rate	95%	97%	97%
<b>MFO 3</b>			
<b>Workers' Protection and Licensing Services</b>	<b>65,477</b>	<b>64,082</b>	<b>76,065</b>
Licensing Program/Continuing Agency Education Program	20,555	20,335	24,821
No. of new agencies issued license	85	82	74
No. of renewed license	360	410	98
Pre-employment Orientation Program/Employment Regulation Services	18,412	18,479	20,818
No. of PEOS conducted	1,000	600	1,165
No. of participants attended	50,467	30,000	81,933
No. of PEOS trainers trained in line with IR Free LGUs	123	300	250
No. of AIR regional seminars conducted	5	12	12
No. of pre-departure orientation seminars conducted	302	200	697
No. of workers attended Pre-Departure Orientation Seminar	13,461	12,000	16,407

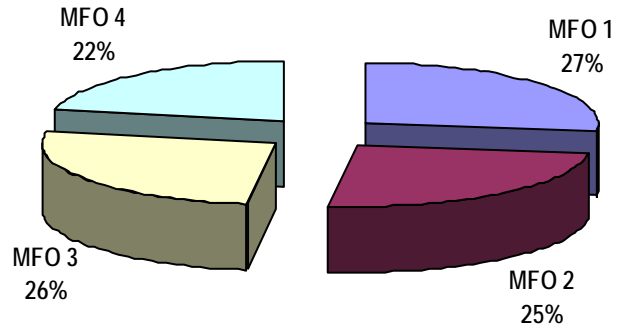
Particulars	FY 2007	FY 2008	FY 2009
	Actual/Amount	Target/Amount	Target/Amount
Anti-Illegal Recruitment Program	26,510	25,268	30,426
No. of IR victims assisted	1,057	1,400	1,469
No. of surveillance operations conducted	147	220	269
No. of illegal recruitment establishments closed	9	30	33
No. of suspected illegal recruiters arrested	25	55	50
No. of IR cases filed for preliminary investigation	301	300	284
<b>MFO 4</b>			
<b>Adjudication Services</b>	<b>54,975</b>	<b>53,588</b>	<b>64,457</b>
Compulsory Arbitration	46,826	45,890	54,541
No. of cases disposed	3,087	3,600	3,700
Disposition Rate	59%	60%	65%
Repatriation of OFWs thru Licensed Agencies	8,149	7,698	9,916
No. of requests for repatriation acted upon	3,032	1,200	2,100
Compliance rate of licensed agencies	100%	100%	96%
<b>Total</b>	<b>258,346</b>	<b>249,513</b>	<b>295,546</b>

### FY 2009 MFO BUDGET

#### By MFO/By Expense Class (In thousand pesos)

Particulars	PS	MOOE	CO	Total	% Share
<b>MFO 1:</b> Overseas Employment Facilitation Services	44,203	31,547	3,904	79,654	27%
<b>MFO 2:</b> Workers' Assistance and Government Placement Services	34,964	36,502	3,904	75,370	25%
<b>MFO 3:</b> Workers' Protection and Licensing Services	43,164	28,997	3,904	76,065	26%
<b>MFO 4:</b> Adjudication Services	33,271	27,283	3,903	64,457	22%
<b>Total</b>	<b>155,602</b>	<b>124,329</b>	<b>15,615</b>	<b>295,546</b>	<b>100%</b>
<b>% Share</b>	<b>53%</b>	<b>42%</b>	<b>5%</b>	<b>100%</b>	

By MFO  
(Total Budget = P295,546,000)



By Expense Class  
(Total Budget = P295,546,000)

