



## Bureau of Immigration

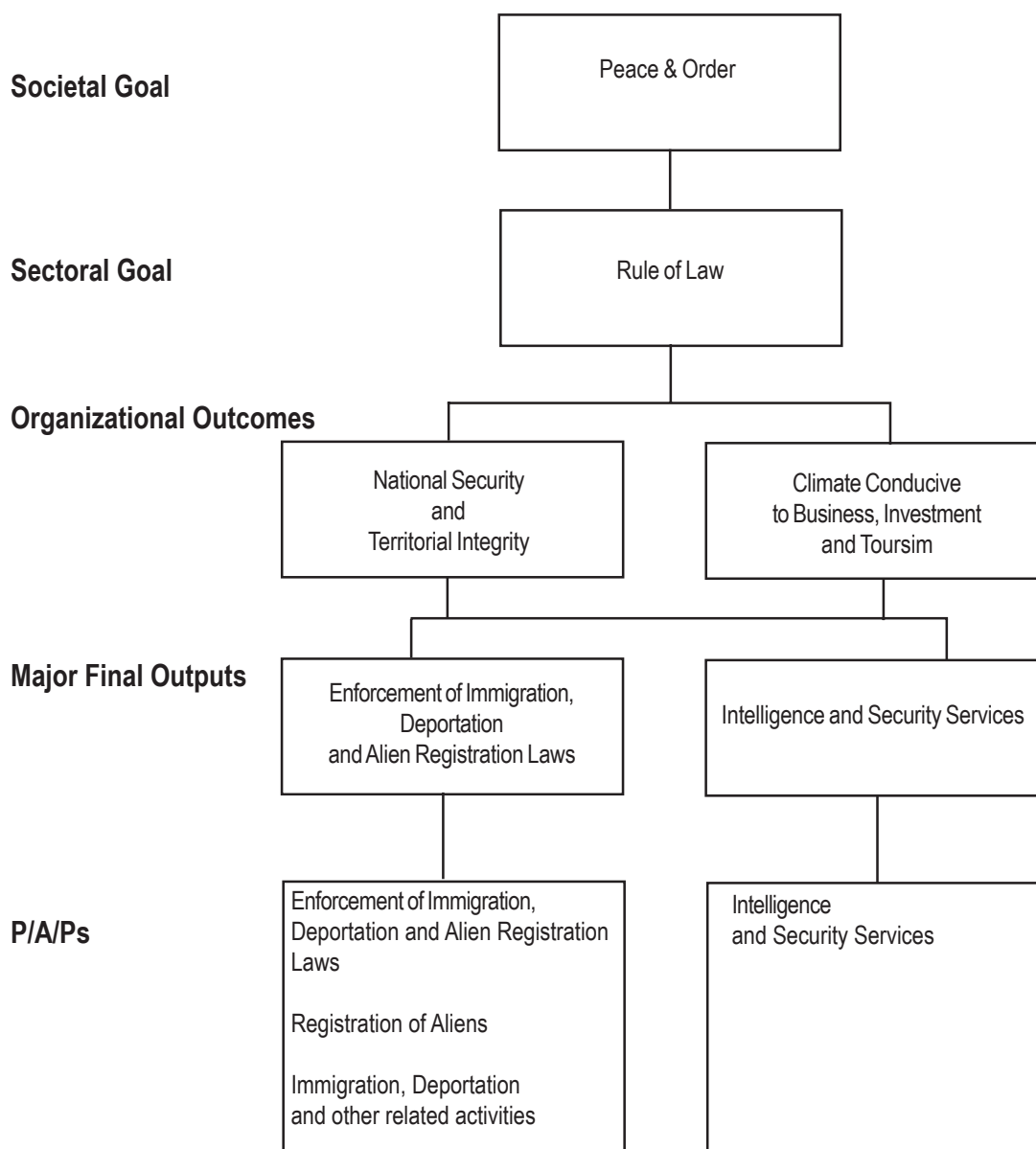
### Legal Basis

- **Commonwealth Act No. 613** (August 26, 1940), or the Philippine Immigration Act of 1940, created the Bureau of Immigration as the Commission on Immigration and Deportation under the Department of Justice (DOJ).
- **Executive Order No. 292** (July 25, 1987), the Administrative Code of 1987, retains the Bureau as an attached agency of the DOJ.
- **Department Circular No. 39** (December 29, 1989) renamed the Commission on Immigration and Deportation to Bureau of Immigration.

### Mandate

The Bureau of Immigration (BI) enforces and administers alien admission and registration as well as immigration and citizenship laws in accordance with the provisions of the Philippine Immigration Act of 1940, an Act to Control and Regulate the Immigration of Aliens into the Philippines.

## LOGICAL FRAMEWORK (BI)



## PERFORMANCE MEASURES AND TARGETS

(Amounts in Thousand Pesos)

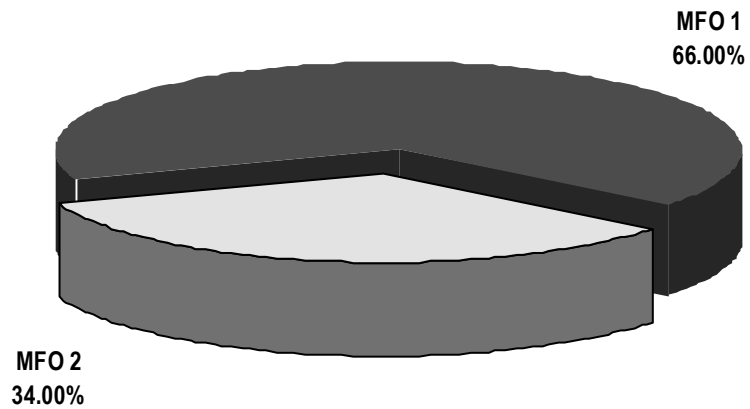
Particulars	FY 2007	FY 2008	FY 2009
	Actual / Amount	Target / Amount	Target / Amount
<b>MFO 1</b>			
<b>Enforcement of Immigration, Deportation and Alien Registration Laws</b>	<b>472,763</b>	<b>248,831</b>	<b>231,535</b>
Registration transactions processed	99,287	100,740	100,740
Aliens registered	23,003	23,400	23,400
IDs issued to recognized naturalized &/or admitted Filipinos	8,383	8,400	8,400
Travel documents processed and issued	49,018	50,000	50,000
Certificates of residence issued	17,947	18,000	18,000
Duplicates of residence issued	936	940	940
Immigration Transaction Processed			
No. of incoming & outgoing aliens screened and checked	5,817,397	5,847,631	5,847,631
admitted upon arrival	2,921,433	2,930,052	2,930,052
cleared for departure	2,895,964	2,917,579	2,917,579
No. of vessels boarded and inspected	21,727	21,760	21,760
boarded and inspected upon arrival	10,851	10,880	10,880
cleared on departure	10,876	10,880	10,880
No. of requests for extension of stay received & processed	398,324	400,144	400,144
<b>MFO 2</b>			
<b>Intelligence and Security Services</b>	<b>234,628</b>	<b>128,185</b>	<b>119,275</b>
Intelligence cases processed	1,522	1,225	1,225
No. of cases detected	1,061	780	780
No. of arrests made	71	70	70
No. of illegal aliens detained	280	270	270
No. of illegal aliens deported	110	105	105
<b>TOTAL</b>	<b>707,391</b>	<b>377,016</b>	<b>350,810</b>

## FY 2009 MFO BUDGET

### By MFO/By Expense Class (In thousand pesos)

Particulars	PS	MOOE	TOTAL	% Share
<b>MFO 1</b> Enforcement of Immigration, Deportation and Alien Registration Laws	147,420	84,115	231,535	66.00%
<b>MFO 2</b> Intelligence and Security Services	75,943	43,332	119,275	34.00%
<b>Total</b>	<b>223,363</b>	<b>127,447</b>	<b>350,810</b>	<b>100.00%</b>
<b>% Share</b>	<b>63.67%</b>	<b>36.33%</b>	<b>100.00%</b>	

### BY MFO (Total Budget = P350,810,000)



### BY Expense Class (Total Budget = P350,810,000)

