



## News and Information Bureau

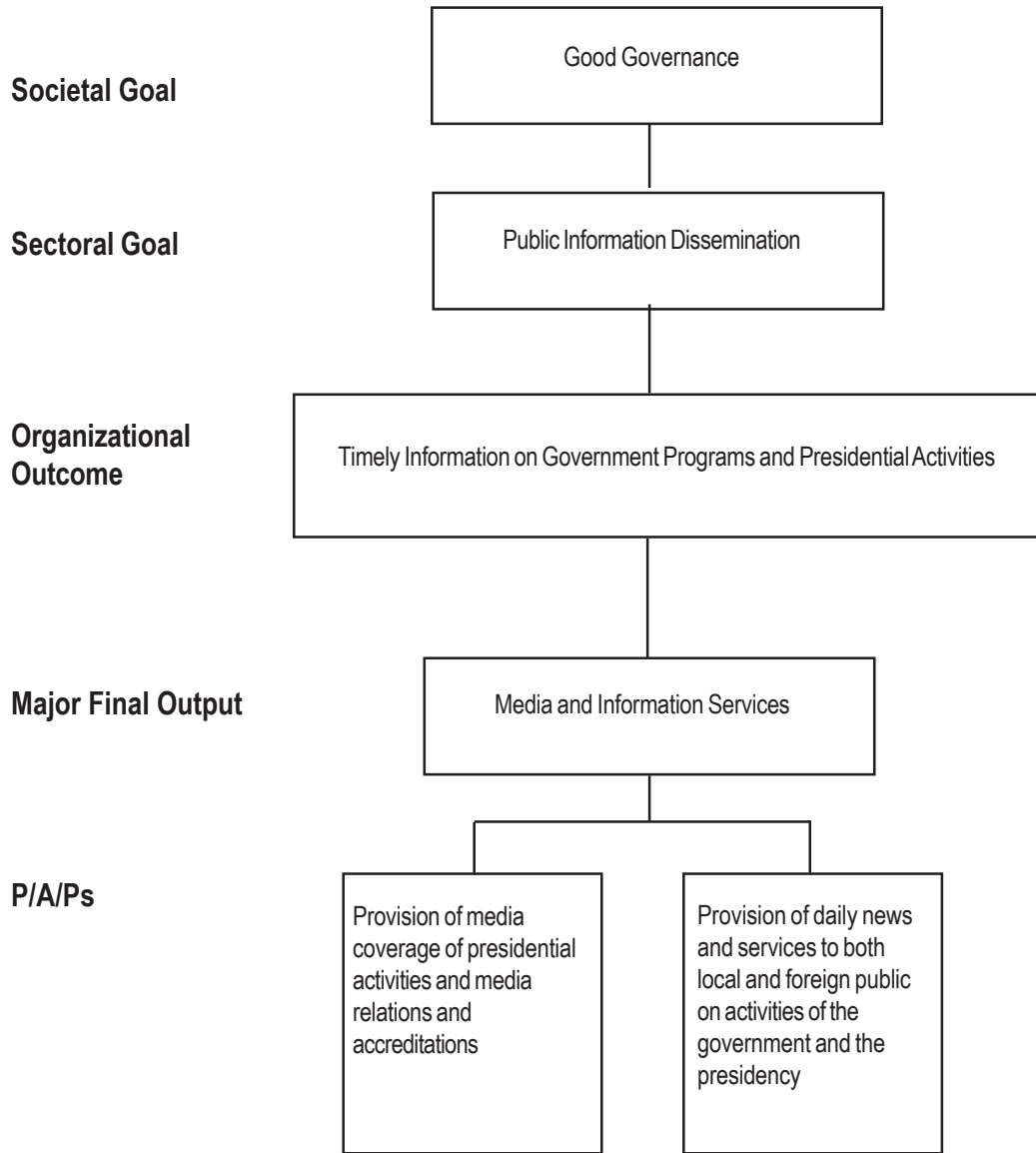
### Legal Basis

- **Executive Order No. 297** (July 25, 1987) created the News and Information Bureau (NIB) under the Office of the Press Secretary (OPS).
- **Executive Order No. 4** (July 30, 2010) reorganized and renamed the OPS as the Presidential Communications Operations Office (PCOO) and placed the NIB as an attached agency under the control and supervision of the PCOO.

### Mandate

The NIB provides efficient, effective, productive, and economical services relating to the development and formulation of a domestic and foreign information program for the Government in general, and the Presidency in particular, including the development of strategies for the dissemination of information on specific government programs.

**LOGICAL FRAMEWORK (NIB)**



**PERFORMANCE MEASURES AND TARGETS**  
(Amounts in Thousand Pesos)

Particulars	FY 2010		FY 2011	FY 2012
	Target/Amount	Actual/Amount	Target/Amount	Target/Amount
<b>MFO</b>				
<b>Media and Information Services</b>	P 114,425	P 114,095	P 91,073	P 95,686
News stories submitted on presidential/ government policies, pronouncements, directives, programs, activities, etc., photographs taken of presidential activities, including visits of state guests				
No. of press and photo releases	9,600	24,450	8,000	9,600
Speeches, press conferences, briefings, interviews transcribed	4,300	10,127	3,500	4,300
News monitoring reports and clippings submitted	188,000	253,381	170,000	188,000
Media relations services rendered	6,500	6,044	5,500	6,500
Journalists assisted and accredited	94,000	113,862	90,000	94,000
Daily news stories, news photos and information gathered and disseminated	61,022	123,062	60,000	61,022
<b>TOTAL</b>	<b>P 114,425</b> 1/	<b>P 114,095</b>	<b>P 91,073</b>	<b>P 95,686</b>

1/Includes continuing allotment (P6.581M) and releases from MPBF (P10.269M) and RBF (P3.496M).

**FY 2012 MFO BUDGET**

**By MFO/By Expense Class**  
(In Thousand Pesos)

Particulars	PS	MOOE	CO	TOTAL	%Share
<b>MFO</b>					
Media and Information Services	70,196	25,490	-	95,686	100%
<b>TOTAL</b>	<b>70,196</b>	<b>25,490</b>	<b>-</b>	<b>95,686</b>	
<b>% Share</b>	<b>73.36%</b>	<b>26.64%</b>	<b>-</b>		<b>100.00%</b>

**By Expenses Class**  
(Total Budget = P95,686,000)

