



## OFFICE OF THE PRESIDENT

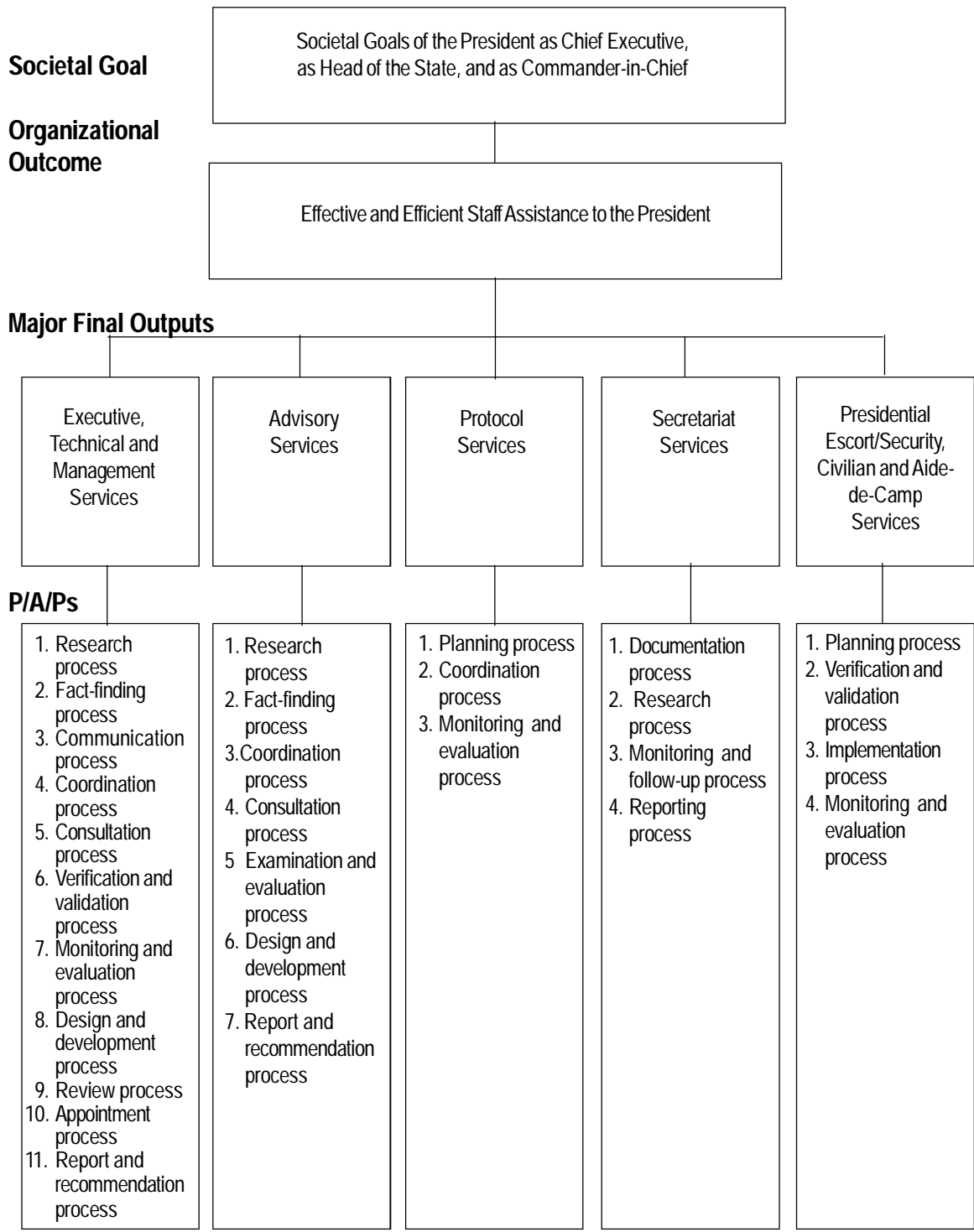
### Legal Basis

- **The Philippine Constitution of 1935 and of 1987** (Article VII) vest executive power in the President of the Philippines.
- **Executive Order No. 292** (July 25, 1987), or the Administrative Code of 1987, provides for the organization of the Office of the President (OP) and the agencies and units under it.

### Mandate

The OP assists the President in the preparation, management, overseeing, monitoring, and implementation of policies, plans, and programs. As rationalized in accordance with the provisions of Executive Order No. 366 and its Implementing Rules and Regulations, the OP-Proper shall primarily be a staff office focusing on the provision of advisory, consultative, research and fact-finding, and other support services to the President.

**LOGICAL FRAMEWORK (OP)**



**PERFORMANCE MEASURES AND TARGETS**  
(Amounts in Thousand Pesos)

Particulars	FY 2010 <sup>1/</sup>		FY 2011	FY 2012
	Target/Amount	Actual/Amount	Target/Amount	Target/Amount
<b>MFO 1</b> <b>Executive, Technical and Management Services</b>	<b>447,216</b>	<b>1,066,192</b>	<b>1,240,290</b>	<b>1,104,291</b>
• Completed Staff Work (CSW)	100% completion	100% completed	100% completion	100% completion
• Government Quality Management Systems Standards (GQMSS)	100% compliance	100% complied	100% compliance	100% compliance
<b>MFO 2</b> <b>Advisory Services</b>	<b>2,720,565</b>	<b>991,999</b>	<b>513,862</b>	<b>899,151</b>
• Completed Staff Work (CSW)	100% completion	100% completed	100% completion	100% completion
• Government Quality Management Systems Standards (GQMSS)	100% compliance	100% complied	100% compliance	100% compliance
<b>MFO 3</b> <b>Protocolar Services</b>	<b>335,412</b>	<b>127,470</b>	<b>370,584</b>	<b>361,906</b>
• Completed Staff Work (CSW)	100% completion	100% completed	100% completion	100% completion
• Government Quality Management Systems Standards (GQMSS)	100% compliance	100% complied	100% compliance	100% compliance
<b>MFO 4</b> <b>Secretariat Services</b>	<b>186,340</b>	<b>32,487</b>	<b>33,512</b>	<b>36,469</b>
• Completed Staff Work (CSW)	100% completion	100% completed	100% completion	100% completion
• Government Quality Management Systems Standards (GQMSS)	100% compliance	100% complied	100% compliance	100% compliance
<b>MFO 5</b> <b>Presidential Escort, Security and Aide-Aide-de-Camp Services</b>	<b>37,269</b>	<b>186,877</b>	<b>320,000</b>	<b>320,000</b>
• Completed Staff Work (CSW)	100% completion	100% completed	100% completion	100% completion
• Government Quality Management Systems Standards (GQMSS)	100% compliance	100% complied	100% compliance	100% compliance
<b>TOTAL</b>	<b>3,726,802 <sup>2/</sup></b>	<b>2,405,025</b>	<b>2,478,248</b>	<b>2,721,817</b>

1/ The significant variance between the FY 2010 targets and actual expenditures are due to the systems and processes improvement along with necessary institutional reforms being implemented at the Office of the President. Major changes were incorporated in the OP general structure to promote transparency and accountability within OP and its budget. Among these changes are the deactivation and eventual abolition of some Locally-Funded Projects under OP, adoption of reforms in the procurement processes and strengthening of the Bids and Awards Committee (BAC), and prudent foreign travels of the President. With the redefined work programs of OP, an accelerated increase in the level of expenditures due to the increase in level of activities for FY 2011 is expected.

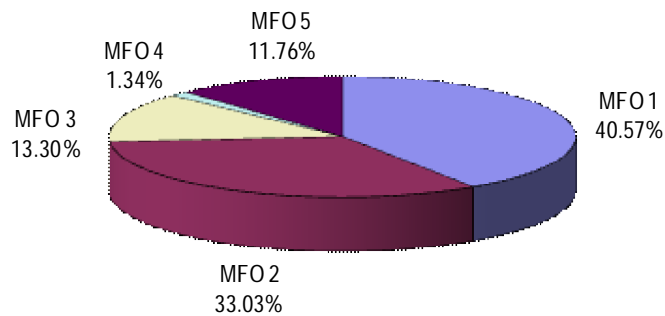
2/ Includes continuing allotment (P70,903 M) and releases from Contingent Fund (P42,279 M), MRF (P46,369) and RRF (P16,170 M).

## FY 2012 MFO BUDGET

### By MFO/By Expense Class (In Thousand Pesos)

Particulars	PS	MOOE	CO	TOTAL	% Share
<b>MFO 1</b> Executive, Technical and Management Services	393,262	565,565	145,464	1,104,291	40.57%
<b>MFO 2</b> Advisory Services	34,499	860,312	4,340	899,151	33.03%
<b>MFO 3</b> Protocol Services	57,077	303,996	833	361,906	13.30%
<b>MFO 4</b> Secretariat Services	29,099	7,370		36,469	1.34%
<b>MFO 5</b> Presidential Escort/Security, Civilian and Aide-de-Camp Services		320,000		320,000	11.76%
<b>TOTAL</b>	<b>513,937</b>	<b>2,057,243</b>	<b>150,637</b>	<b>2,721,817</b>	<b>100%</b>
<b>% Share</b>	<b>18.88%</b>	<b>75.58%</b>	<b>5.54%</b>	<b>100.00%</b>	

**By MFO**  
(Total Budget = P2,721,817,000)



**By Expense Class**  
(Total Budget = P2,721,817,000)

