



PRESIDENTIAL MANAGEMENT STAFF

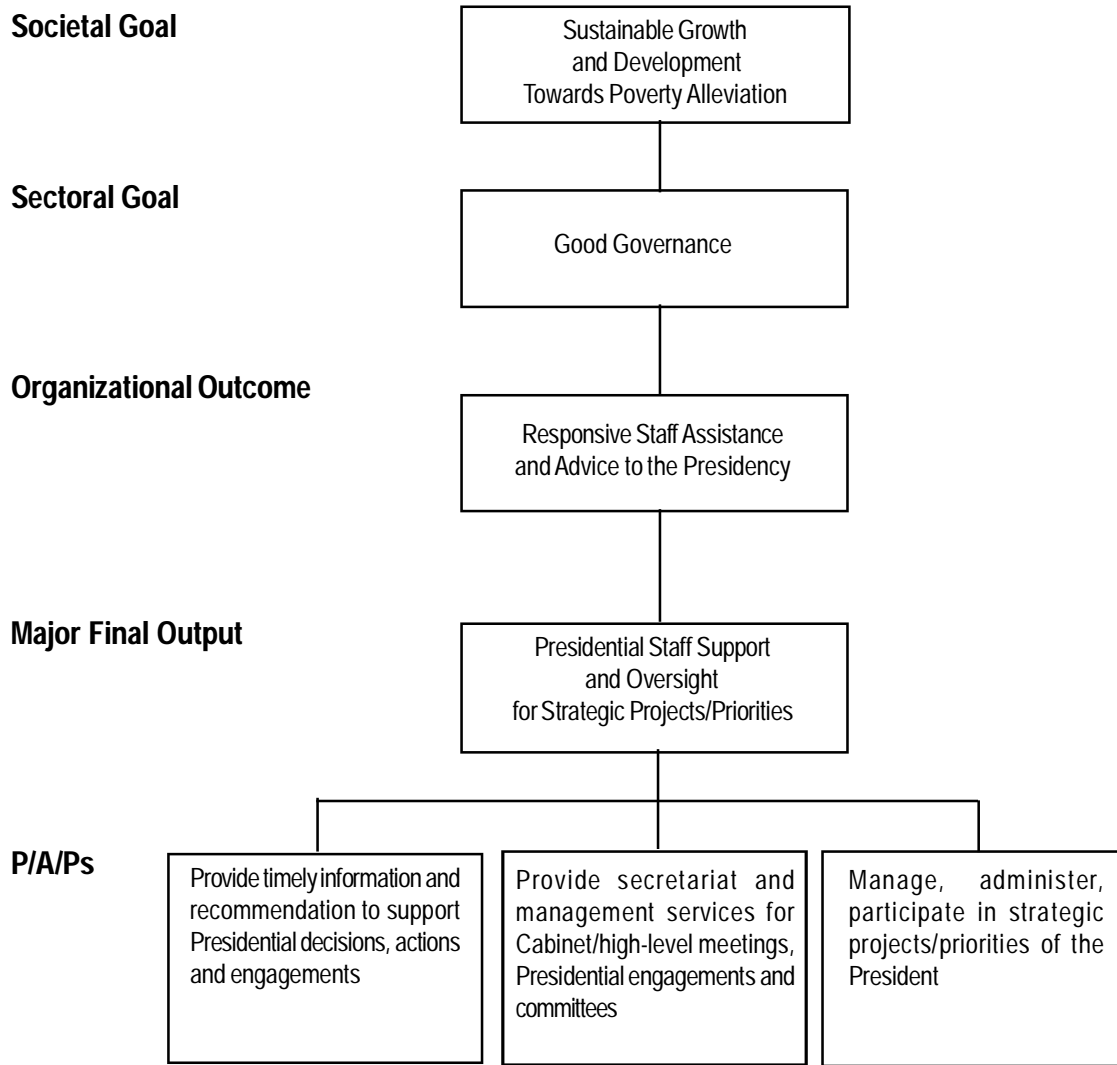
Legal Basis

- **Executive Order No. 250** (July 29, 1970) created the Development Management Staff (DMS) within the Office of the President.
- **Presidential Decree No. 955** (July 8, 1976) reconstituted and renamed DMS as the Presidential Management Staff (PMS).
- **Executive Order No. 130** (January 30, 1987) reorganized PMS, defined its powers and functions, and merged and consolidated all offices and agencies whose functions overlap and/or are inter-related within the reorganized PMS.

Mandate

The Presidential Management Staff (PMS) provides staff assistance to the Office of the President in the Presidential exercise of overall management of the development process. Over the years, it has assumed additional mandates evolving according to the day-to-day and long-term needs of the Presidency.

LOGICAL FRAMEWORK (PMS)



PERFORMANCE MEASURES AND TARGETS
(Amounts in Thousand Pesos)

Particulars	FY 2010		FY 2011	FY 2012
	Target/ Amount	Actual/ Amount	Target/ Amount	Target/ Amount
MFO				
Presidential Staff Support and Oversight for Strategic Projects/Priorities	P 288,389	P 273,762	P 227,153	P 261,826
a. Provide timely information & recommendation to support Presidential decisions, actions and engagements.				
1. Preparation of studies/complete staff work on policy/ program issues & proposals (EO 130 s. 1987, EO 237 s. 1987, AO 138 s. 2006)				
• No. of studies/issue briefs/aide memoires submitted to OP	1,095	1,052	1,084	1,100
• No. of speeches/messages submitted to the President/ Spokepersons	762	267	706	710
• No. of action documents issued on reviewed issues/ proposals	3,070	634	380	380
• No. of request/reviewed/referred to other agencies/ assisted/acted upon	60	-	676	530
• No. of monitoring and environmental scanning reports submitted	40	131	124	36
2. Assessment/reporting on the implementation of the President's directives/priority agenda (EO 130 s. 1987)				
• No. of President's directives documented/issued	1,021	623	168	As needed
• No. of assessment/advocacy reports on President's directives, & priority agenda published/submitted to OP	150	297	16	As needed
b. Manage presidential funds and monitor and evaluate strategic priorities of the President				
1. President's Social Fund (PSF) (PMS as technical support/ MO 56 s. 2002)				
• No. of OP – approved/endorsed projects processed for funding	2,000	2,278	1,000	1,100
• No. of monitoring/audit reports prepared	5,280	5,024	140	200
• No. of request evaluated/referred to concerned agencies	100% of rqt's	920	1,320	1,452
• No. of PSF proposals funded	-	-	1,000	845
2. Oversight functions for priority programs/projects and other special concerns				
• No. of evaluation/status reports/issue briefs submitted to OP	160	69	24	25
• No. of requests evaluated or referred to concerned agencies	2,705	-	12	15
• No. of events/information campaign conducted	125	64	-	-
• No. of issues/bottleneck resolved on programs/projects	205	42	24	10
3. Issuance of Clearance for Importations/Donations for Relief/ Rehabilitation Programs (MO 36 s. 1992, MO 32 s. 1998)				
• No. of importations/donations processed, issued clearance	20	8	20	10
• No. of requests evaluated/referred to concerned agencies	-	-	11	6

Particulars	FY 2010		FY 2011	FY 2012
	Target/ Amount	Actual/ Amount	Target/ Amount	Target/ Amount
4. Implementation/Maintenance of the Office of the President Executive Information System (PEIS) (AO 86 s. 2003)				
<ul style="list-style-type: none"> Installation and operationalization of the Knowledge Management Center (KMC) 	Continue to Strengthen the PMS Internal information infrastructure based on the approved ISSP	Strengthened the PMS internal information infrastructure through the pursuit of 2 e-Government projects as preparation for the OPEIS implementation.	100% Continuing support and services	100% Continuing support and services
<ul style="list-style-type: none"> Installation and operationalization of the Cabinet Information Network (Cab-i-net) Program 	100% Continuing Support and Maintenance	Completed exploratory meetings and envisioning of the proposed integration of the KMC PDMS and Cab-i-net Systems. Provide the continuous support and services to PMS operations.	100% of the requirement completed	100% Continuing support and services
c. Provide technical, secretariat & management services for Presidential/high-level meetings, engagements & committees				
<ul style="list-style-type: none"> No. of Cabinet/high-level meetings provided with secretariat support 	150	72	As required/as needed	100% of the requirements
<ul style="list-style-type: none"> No. of Presidential engagements managed 	1,200	539	220	260
<ul style="list-style-type: none"> No. of Presidential appointments submitted to OP 	5,799	3,806	As needed	As needed
<ul style="list-style-type: none"> No. of requests reviewed or referred to concerned agencies 	-	-	47	2,425
<ul style="list-style-type: none"> No. of executive briefs and briefing kits prepared for the President 	-	196	1,200	1,200
<ul style="list-style-type: none"> No. of action documents prepared for the President 	-	223	As needed	As needed
<ul style="list-style-type: none"> No. of cases processed and/or resolved 	-	100% of the requirements	18	As needed
<ul style="list-style-type: none"> President's Pro Performance System (PPS) 	34	17	-	-
TOTAL	288,389	273,762	227,153	261,826

1/ Includes continuing allotment (P29.113 M) and releases from Contingent Fund (P1M), MPBF (P19.943) and PGF (P.168 M).

2/ Decrease in actual accomplishments is due to change in administration since most of the agency's activities includes providing staff support for the President and overseeing priority programs and projects of the administration

FY 2012 MFO BUDGET

By MFO/By Expense Class (In Thousand Pesos)

Particulars	PS	MOOE	CO	TOTAL	% SHARE
MFO					
Presidential Staff Support and Oversight for Strategic Projects/ Priorities	120,430	117,519	23,877	261,826	100%
TOTAL	120,430	117,519	23,877	261,826	100%
% Share	46%	44.88%	9.12%	100%	

By Expense Class (Total Budget = P261,826,000)

