



## HOUSING AND LAND USE REGULATORY BOARD

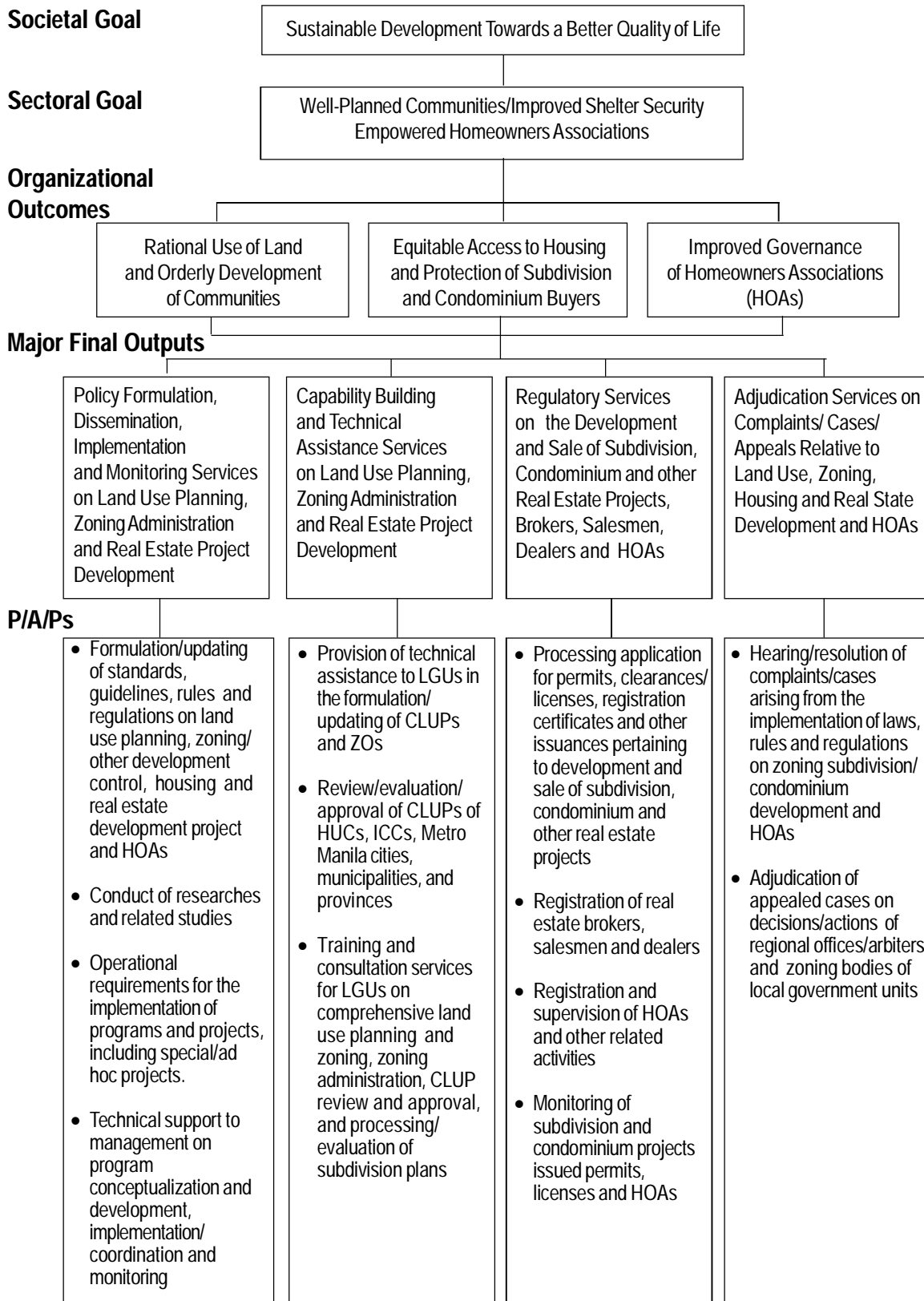
### Legal Basis

- **Executive Order No. 648** (February 7, 1981) created the Housing and Land Use Regulatory Board (HLURB) as the Human Settlements Regulatory Commission (HSRC) with the powers and attributes of a quasi-judicial body.
- **Batas Pambansa Blg. 220** (March 25, 1982) authorized the Ministry of Human Settlements (MHS), thru the HSRC, to establish and promulgate different standards and technical requirements for economic and socialized housing projects.
- **Executive Order No. 90** (December 17, 1986) renamed the HSRC to Housing and Land Use Regulatory Board (HLURB) and designated it as a regulatory body for housing and land development.
- **Executive Order No. 71** (March 23, 1993) devolved the powers of the HLURB of approving Subdivision Plans to cities and municipalities.
- **Executive Order No. 72** (March 25, 1993) devolved the powers of the HLURB of reviewing and approving Comprehensive Land Use Plans (CLUPs) of component cities and municipalities to the local government units (LGUs) concerned.
- **Republic Act No. 8763** (March 7, 2000) transferred the powers of the Home Guaranty Corporation (HGC) over concerned Homeowners Association (HOAs) to HLURB.

### Mandate

The Housing and Land Use Regulatory Board (HLURB) is government's regulatory body for housing and land development. It renders planning assistance and promulgates standards and rules for land use planning, zoning, and land development.

## LOGICAL FRAMEWORK (HLURB)



## PERFORMANCE MEASURES AND TARGETS

(Amounts in Thousand Pesos)

Particulars	FY 2010		FY 2011	FY 2012
	Target/ Amount	Actual/ Amount	Target/ Amount	Target/ Amount
<b>MFO 1</b>				
<b>Policy Formulation, Dissemination, Implementation and Monitoring Services on Land Use Planning, Zoning Administration and Real Estate Project Development</b>	<b>63,863</b>	<b>71,338</b>	<b>55,263</b>	<b>67,990</b>
<ul style="list-style-type: none"> <li>• Formulation/updating of standards, guidelines, rules and regulations on land use planning, zoning/ other development control, housing and real estate development projects and HOAs.                             <ul style="list-style-type: none"> <li>- No. of policy guidelines rules and regulations, systems and procedures formulated/updated or amended</li> </ul> </li> <li>• Conduct of researches and related studies                             <ul style="list-style-type: none"> <li>- No. of technical/legal researches conducted</li> <li>- No. of technical/legal opinions rendered</li> </ul> </li> <li>• Operational requirements for the implementation of programs and projects, including special/ ad hoc projects.                             <ul style="list-style-type: none"> <li>- Number of HLURB accomplishment reports prepared and submitted to HUDCC, DBM, COA, Senate, Congress and other agencies</li> <li>- Number of performance assessment and target setting sessions conducted</li> </ul> </li> <li>• Technical support to management on program conceptualization and development, implementation/ coordination and monitoring                             <ul style="list-style-type: none"> <li>- Number of administrative issuances prepared and disseminated</li> <li>- Number of board resolutions prepared</li> <li>- Number of staff training provided/ attended</li> </ul> </li> </ul>	10	5	10	10
	360	338	360	360
	240	406	240	240
	34	40	34	34
	2	1	2	1
	70	41	70	70
	12	12	12	12
	90	36	90	90
<b>MFO 2</b>				
<b>Capability Building and Technical Assistance Services on Land Use Planning, Zoning Administration and Real Estate Project Development</b>	<b>18,488</b>	<b>27,834</b>	<b>21,752</b>	<b>19,071</b>
<ul style="list-style-type: none"> <li>• Provision of technical assistance to LGUs in the formulation/updating of Comprehensive Land Use Plans and Zoning Ordinances                             <ul style="list-style-type: none"> <li>- Number of LGUs provided technical assistance in the formulation/update, review and approval of CLUPs and zoning ordinances</li> </ul> </li> <li>• Review/evaluation/ of CLUPs of HUCs, ICCs, Metro Manila cities, municipalities and provinces.                             <ul style="list-style-type: none"> <li>- Number of submitted CLUPs reviewed/ evaluated</li> </ul> </li> </ul>	111	148	111	125
	12	59	12	12

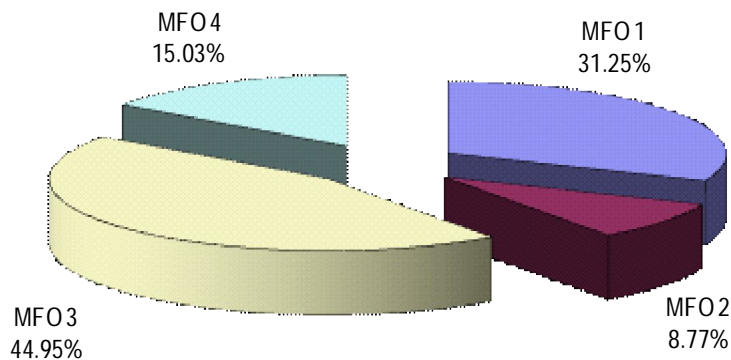
Particulars	FY 2010		FY 2011	FY 2012
	Target/ Amount	Actual/ Amount	Target/ Amount	Target/ Amount
<ul style="list-style-type: none"> <li>• Training and consultation services provided to LGUs on comprehensive land use planning, zoning administration, CLUP review, and approval, and processing/evaluation of subdivision plans <ul style="list-style-type: none"> <li>- No. of LGUs trained/provided consultation services on subdivision plan process, evaluation, monitoring, review and approval of CLUPs and zoning administration</li> </ul> </li> </ul>	450	1,173	450	500
<b>MFO 3</b>				
<b>Regulatory Services on the Development and Sale of Subdivision, Condominium and Other Real Estate Projects, Brokers, Salesmen, Dealers and HOAs</b>	<b>87,655</b>	<b>97,601</b>	<b>76,301</b>	<b>97,782</b>
<ul style="list-style-type: none"> <li>• Processing of applications for permits, clearances, licenses, registration certificates and other issuances pertaining to development and sale of subdivision/condominium and other real estate projects <ul style="list-style-type: none"> <li>- Number of Licenses to Sell (LS) issued</li> <li>- Number of other permits, clearances and registration certificates approved/issued</li> </ul> </li> </ul>	1,000	769	1,000	1,000
	9,000	8,059	9,000	9,000
<ul style="list-style-type: none"> <li>• Registration of real estate brokers, salesmen and dealers registered <ul style="list-style-type: none"> <li>- Number of real estate brokers, salesmen and dealers registered</li> </ul> </li> </ul>	3,000	2,380	3,000	3,000
<ul style="list-style-type: none"> <li>• Registration and supervision of HOAs and other related activities <ul style="list-style-type: none"> <li>- Number of HOAs registered</li> </ul> </li> </ul>	815	563	815	1,015
<ul style="list-style-type: none"> <li>• Monitoring of subdivision and condominium projects, permits and licenses and HOAs <ul style="list-style-type: none"> <li>- Number of field and non-field monitoring/investigations conducted</li> </ul> </li> </ul>	22,900	24,614	22,900	23,000
<b>MFO 4</b>				
<b>Adjudication Services on Complaints/Cases/Appeals Relative to Land Use/Zoning, Housing and Real Estate Development and HOAs</b>	<b>22,878</b>	<b>31,661</b>	<b>24,760</b>	<b>32,702</b>
<ul style="list-style-type: none"> <li>• Hearing/resolution of complaints/cases arising from the implementation of laws, rules and regulations on zoning and subdivision/condominium development and HOAs <ul style="list-style-type: none"> <li>- Number of complaints/cases adjudicated</li> </ul> </li> </ul>	1,265	706	1,265	1,335
<ul style="list-style-type: none"> <li>• Adjudication of appealed cases on decisions/actions of regional offices/arbiters and zoning bodies of local <ul style="list-style-type: none"> <li>- Number of appealed cases resolved</li> </ul> </li> </ul>	600	727	600	700
<b>TOTAL</b>	<b>192,884</b>	<b>228,434</b>	<b>178,076</b>	<b>217,545</b>

## FY 2012 MFO BUDGET

### By MFO/By Expense Class (In Thousand Pesos)

Particulars	PS	MOOE	CO	TOTAL	% SHARE
<b>MFO 1</b> Policy formulation, dissemination, implementation and monitoring services on land use planning, zoning administration and real estate project development.	45,592	20,841	1,557	67,990	31.25%
<b>MFO 2</b> Capability building and technical assistance services on land use planning, zoning administration and real estate project development.	12,930	6,141	-	19,071	8.77%
<b>MFO 3</b> Regulatory services on the development and sale of subdivision, condominium and other real estate projects, brokers, salesmen, dealers and HOAs	71,285	26,497	-	97,782	44.95%
<b>MFO 4</b> Adjudication services on complaints/cases/ appeals relative to land use/zoning, housing and real estate development and HOAs	26,131	6,571	-	32,702	15.03%
<b>TOTAL</b>	<b>155,938</b>	<b>60,050</b>	<b>1,557</b>	<b>217,545</b>	<b>100%</b>
<b>% Share</b>	<b>71.68%</b>	<b>27.60%</b>	<b>0.72%</b>	<b>100%</b>	

**By MFO**  
(Total Budget = P217,545,000)



**By Expense Class**  
(Total Budget = P217,545,000)

