



## SUPREME COURT OF THE PHILIPPINES AND THE LOWER COURTS

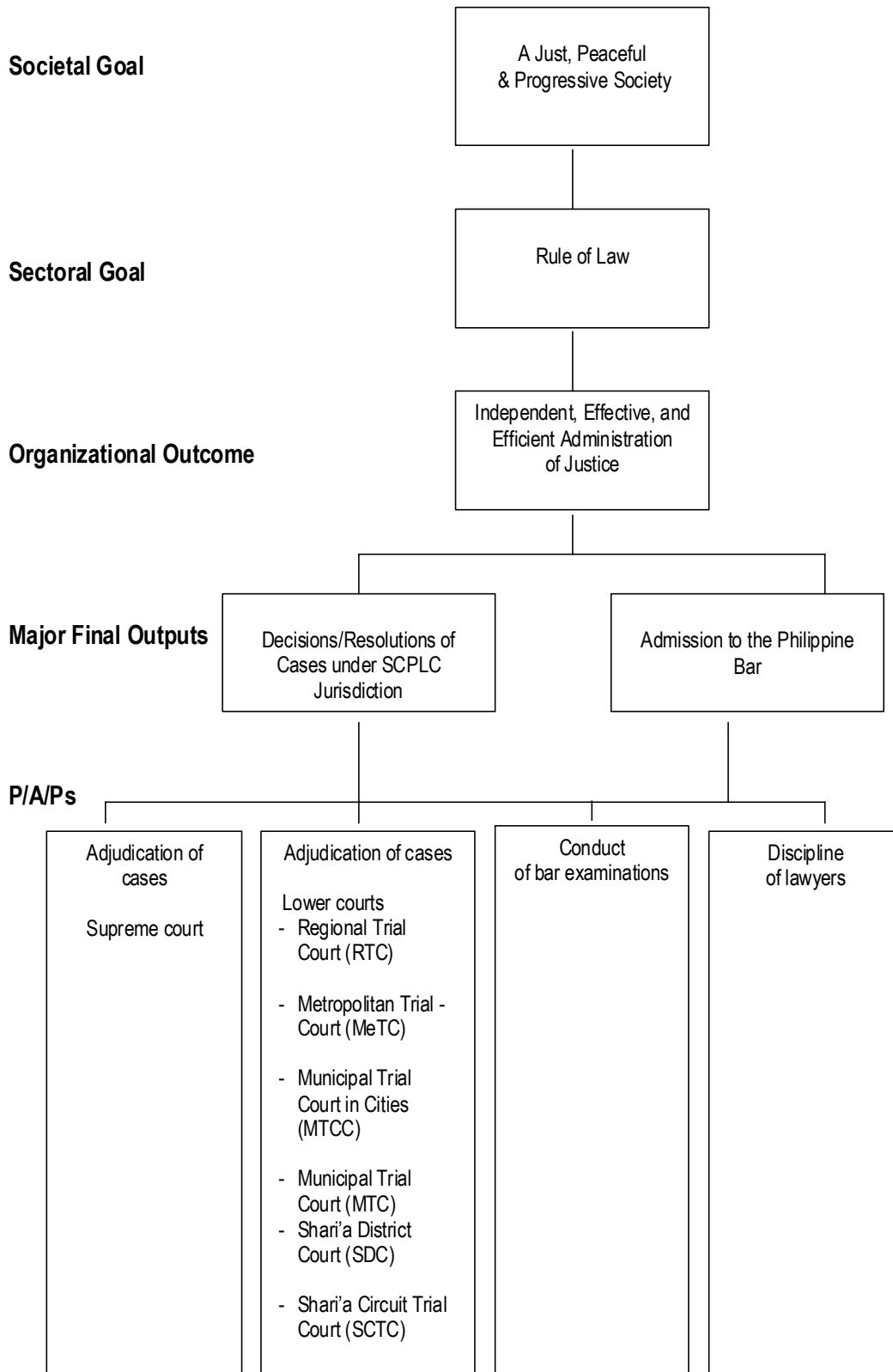
### Legal Basis

- **The Philippine Constitution of 1935, 1973, 1987** vested judicial power in one Supreme Court and in such lower courts as may be established by law.
- **Batas Pambansa Blg. 129** (August 14, 1981), Judiciary Reorganization Act of 1980, created first-level courts [Metropolitan Trial Courts (MeTCs) established in Metropolitan Manila, Municipal Trial Courts in Cities (MTCCs) outside Metropolitan Manila, Municipal Trial Courts (MTCs) in each of the other cities or municipalities, and Municipal Circuit Trial Courts (MCTCs) in each circuit comprising such cities and/or municipalities as grouped by law] and second-level courts [Regional Trial Courts (RTCs) established in each of the 13 regions in the Philippines].
- **Presidential Decree No. 1083** (February 4, 1997) established Shari'a Courts in Islamic regions and provinces to interpret and apply the Code of Muslim Personal Laws, with Shari'a Circuit Courts (SCCs) and the Shari'a District Courts (SDCs), at the same level as the Municipal Circuit Trial Courts (MCTCs) and Regional Trial Courts (RTCs), respectively.

### Mandate

The Supreme Court of the Philippines and the Lower Courts perform adjudicative functions vested on them by the Philippine Constitution and other applicable laws. Their judicial power includes "the duty of the courts of justice to settle actual controversies involving rights which are legally demandable and enforceable, and to determine whether or not there has been a grave abuse of discretion amounting to lack of or excess of jurisdiction on the part of any branch or instrumentality of the Government."

**LOGICAL FRAMEWORK (SCPLCs)**



## PERFORMANCE MEASURES AND TARGETS

(Amounts in Thousand Pesos)

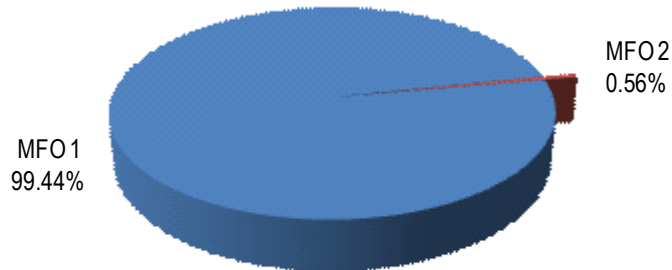
Particulars	FY 2010		FY 2011	FY 2012
	Target/Amount	Actual/Amount	Target/Amount	Target/Amount
<b>MFO 1</b>				
<b>Resolutions/Decisions in appealed and other cases under its Jurisdiction</b>	<b>11,743,937</b>	<b>13,102,131</b>	<b>12,723,344</b>	<b>12,041,519</b>
No. of resolutions/decisions				
Supreme Court	4,996	4,555	4,874	5,215
Disposition rate	44%	43%	46%	50%
Regional Trial Courts (RTC)	132,039	91,882	94,532	97,920
Disposition rate	24.00%	22.88%	23%	24%
Metropolitan Trial Courts (MeTC)	50,276	43,236	46,986	46,539
Disposition rate	30%	29%	31%	34%
Municipal Trial Courts in Cities (MTCC)	56,023	40,765	44,438	43,720
Disposition rate	38%	42%	46%	50%
Municipal Circuit Trial Courts (MCTC)	25,085	15,656	17,989	17,446
Disposition rate	36%	26%	30%	31%
Municipal Trial Courts (MTC)	29,512	19,833	24,067	23,325
Disposition rate	35%	30%	35%	38%
Shari'a District Courts (SDC)	37	29	31	31
Disposition rate	3300%	15%	14%	13%
Shari'a Circuit Courts (SCC)	254	202	247	219
Disposition rate	39%	30%	36%	32%
Child & Family Courts (CFC)	26,123	20,406	21,283	21,098
Disposition rate	29.00%	24.88%	25%	25%
Regional Court Administration Office (RCAO) - Region 7	10,402	10,010	10,747	10,728
Disposition rate	22%	23%	24%	23%
Municipal Trial Courts in Cities - Region 7 (MTCC-7)	9,595	7,120	8,699	8,428
Disposition rate	29%	25%	33%	34%
Municipal Circuit Trial Courts - Region 7 (MCTC-7)	2,839	1,776	2,092	1,990
Disposition rate	59%	45%	51%	51%
Municipal Trial Courts - Region 7 (MTC-7)	990	584	658	631
Disposition rate	55%	43%	48%	48%
<b>MFO 2</b>				
<b>Admission to the Philippine Bar</b>	<b>30,000</b>	<b>57,168</b>	<b>60,000</b>	<b>67,878</b>
No. of applications to bar processed	6,733	5,038	6,400	6,400
No. of certificates of admission issued	1,434	2,519	2,771	3,048
No. of other certificates	25,160	9,203	10,135	11,149
No. of resolutions/dec. of admin. cases	2,000	1,000	2,200	2,500
<b>TOTAL</b>	<b>11,773,937</b>	<b>13,159,299</b>	<b>12,783,344</b>	<b>12,109,397</b>

**FY 2012 MFO BUDGET**

**By MFO/By Expense Class**  
(In Thousand Pesos)

Particulars	PS	MOOE	CO	TOTAL	% SHARE
<b>MFO 1</b> Resolutions/Decisions in appealed and other cases under its Jurisdiction	8,826,447	3,059,052	156,020	12,041,519	99.44%
<b>MFO 2</b> Admission to the Philippine Bar	-	67,878	-	67,878	0.56%
<b>Total</b>	<b>8,826,447</b>	<b>3,126,930</b>	<b>156,020</b>	<b>12,109,397</b>	
<b>%Share</b>	<b>72.89%</b>	<b>25.82%</b>	<b>1.29%</b>		<b>100%</b>

**By MFO**  
(Total Budget = P12,109,397,000)



**By Expense Class**  
(Total Budget = P12,109,397,000)

