



Toll Regulatory Board

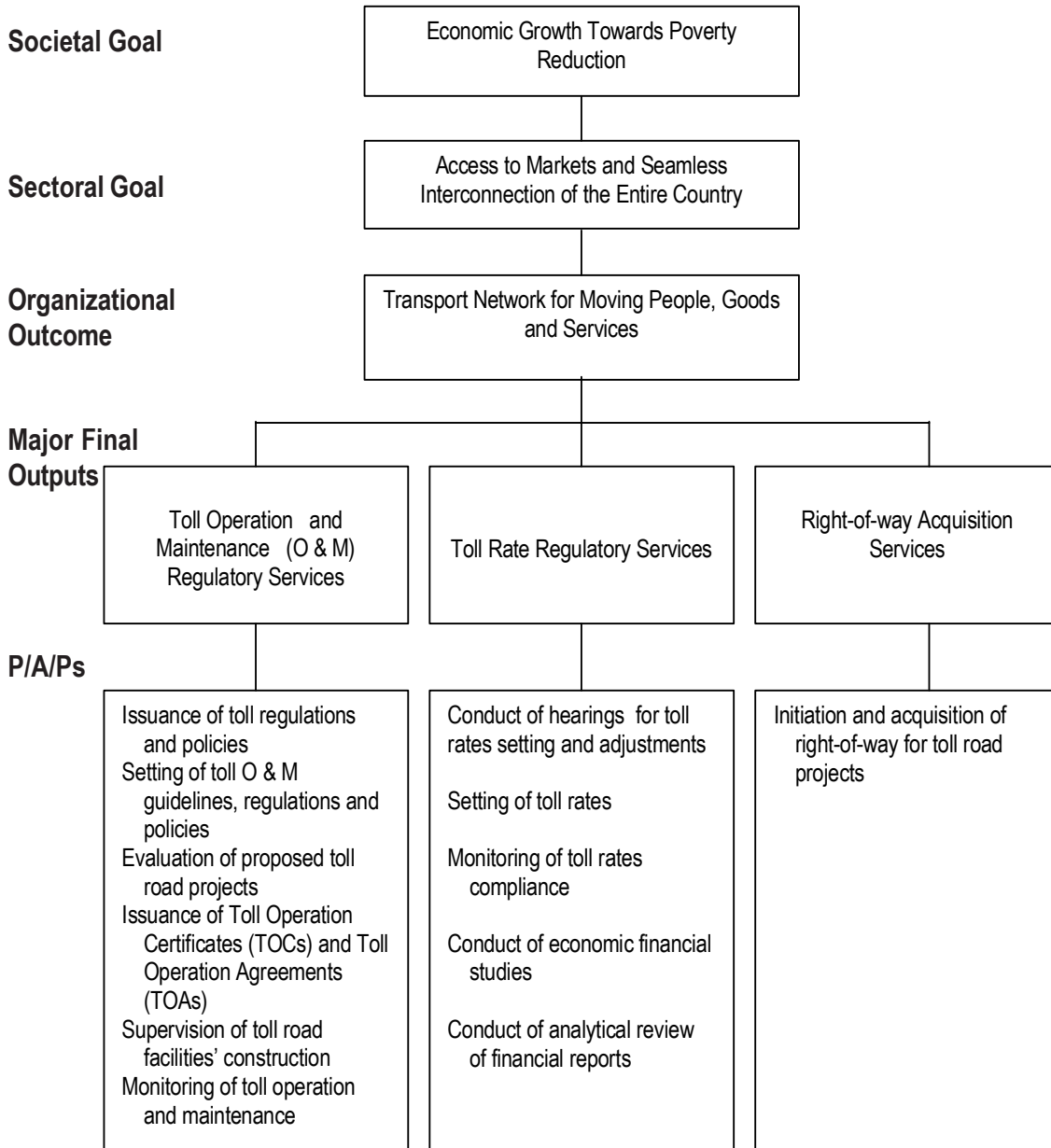
Legal Basis

- **Presidential Decree No. 1112** (March 31, 1977), otherwise known as the “Toll Operation Decree”, created the Toll Regulatory Board to regulate the establishment of toll facilities.
- **Executive Order No. 133** (October 10, 2002) attached the Toll Regulatory Board to the Department of Transportation and Communications (DOTC).
- **Executive Order No. 644** (July 30, 2007) transferred the TRB from DOTC to the Department of Public Works and Highways.
- **Executive Order No. 686** (December 19, 2007) transferred back the TRB from DPWH to DOTC and clarifies the functions of the TRB.

Mandate

The Toll Regulatory Board (TRB) exercises close supervision, monitoring, and regulation of the construction, operation, and maintenance of toll facilities, and the collection of toll fees as well as the rate that may be charged for the use of these facilities.

LOGICAL FRAMEWORK (TRB)



N. B. Function transferred to DPWH per E.O. No. 686 dated December 19, 2007

PERFORMANCE MEASURES AND TARGETS
(Amounts in Thousand Pesos)

Particulars	FY 2010		FY 2011	FY 2012
	Target/ Amount	Actual/ Amount	Target/ Amount	Target/ Amount
MFO 1				
Toll Operation and Maintenance (O & M) Regulatory Services	7,245	8,739	7,979	8,125
Number of toll guidelines, regulations and policies issued	2	3	2	2
Number of proposed projects evaluated	3	5	3	2
Percentage of proposed projects approved by the Board as against those submitted	50%	100%	50%	50%
Number of Toll Operation Certificates (TOCs) issued	4	3	2	0
Number of toll roads supervised for O & M	6	7	8	8
Number of toll roads construction monitored	4	4	3	2
Percentage of toll operators complying with the toll road O & M manuals	100%	100%	100%	100%
MFO 2				
Toll Rate Regulatory Services	4,830	5,825	5,319	5,417
Percentage of application of initial toll rates set over the total number of applications received	100%	100%	100%	100%
Percentage of application for toll rate adjustments acted upon within the prescribed time	100%	100%	100%	100%
Percentage of toll rate compliance	100%	100%	100%	100%
Number of financial reports reviewed and evaluated (audited)	6	6	8	8
MFO 3				
Right-of-way Acquisition Services*	-	-	-	-
ROW acquired in sq. m. of lot on time				
TOTAL	12,075	14,564	13,298	13,542

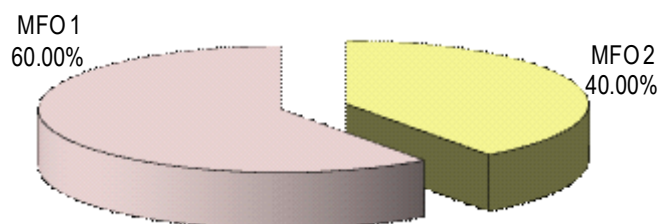
* N. B. Function transferred to DPWH per E.O. No. 686 dated December 19, 2007.

FY 2012 MFO BUDGET

By MFO/By Expense Class (In Thousand Pesos)

Particulars	PS	MOOE	CO	TOTAL	% Share
MFO 1					
Toll Operation and Maintenance Regulatory Services	5,309	2,816	-	8,125	60.00%
MFO 2					
Toll Rate Regulatory Services	3,539	1,878	-	5,417	40.00%
TOTAL	8,848	4,694	-	13,542	100%
% Share	65.34%	34.66%	-	100%	

By MFO (Total Budget = P13,542,000)



By Expense Class (Total Budget = P13,542,000)

