



Office of Transportation Cooperatives

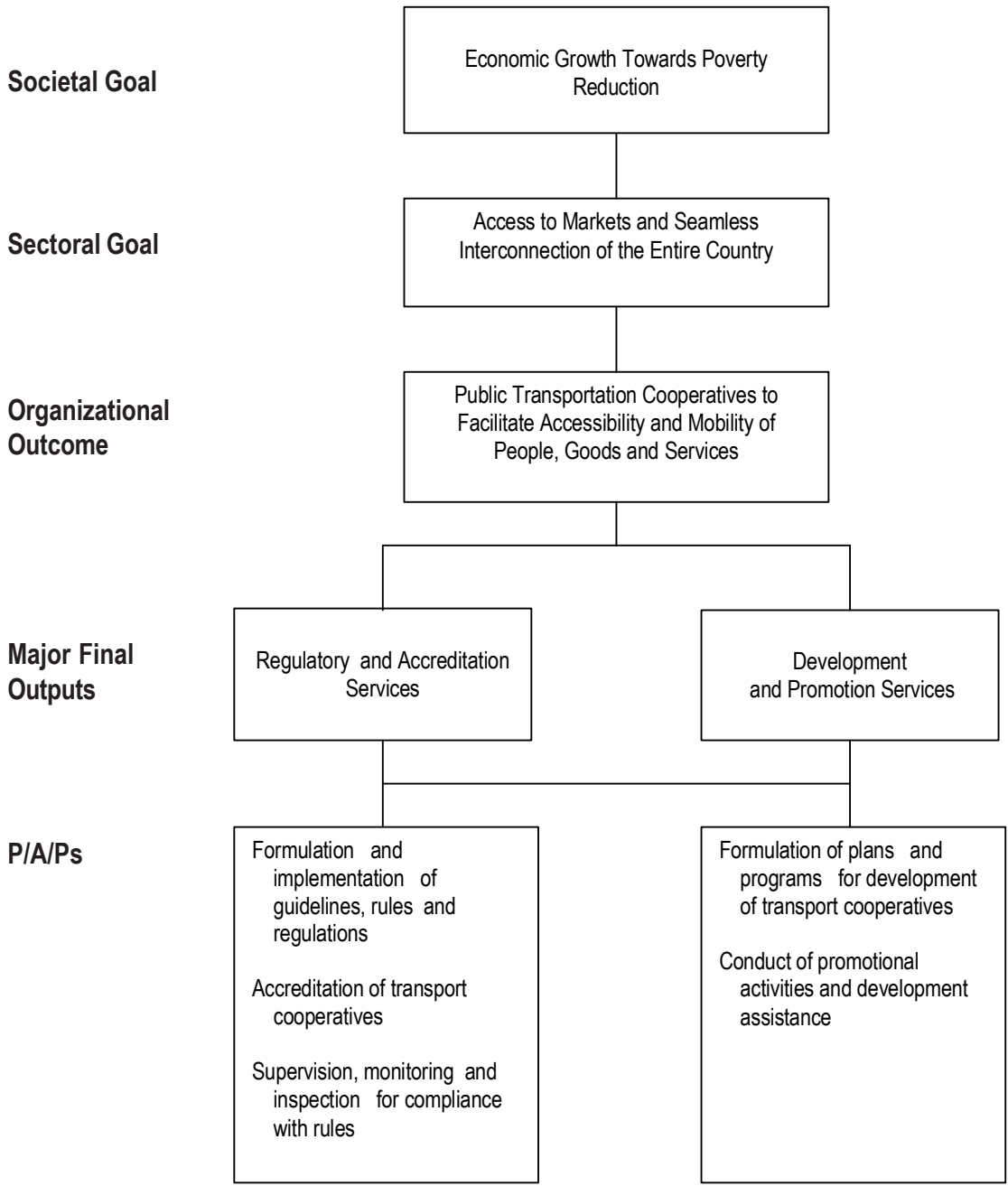
Legal Basis

- **Executive Order No. 898** (May 28, 1983) created the Office of Transportation Cooperatives (OTC) to promote the growth and development of transportation cooperatives.
- **Presidential Memorandum Order No. 116** (September 15, 2003) directed the OTC, as lead agency, to enhance and intensify the voluntary conversion of tricycle operation/associations into transport service cooperatives.

Mandate

The Office of Transportation Cooperatives (OTC) promulgates and implements rules and regulations to govern the promotion, organization, regulation, supervision, and development of transportation cooperatives. It leads in encouraging the conversion of Tricycle Operators and Drivers Associations (TODA) into Transport Service Cooperatives (TSCs). The OTC's mission is to gear the transportation cooperatives system towards maximum integration of the public transport system and to uplift the socio-economic condition of the public utility system and the public utility transport workers, particularly the drivers.

LOGICAL FRAMEWORK (OTC)



PERFORMANCE MEASURES AND TARGETS

(Amounts in Thousand Pesos)

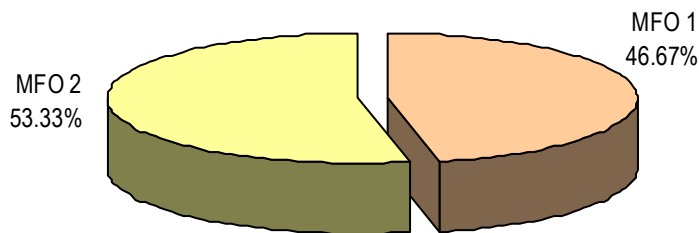
Particulars	FY 2010		FY 2011	FY 2012
	Target/Amount	Actual/Amount	Target/Amount	Target/Amount
MFO 1				
Regulatory and Accreditation Services	5,950	6,624	6,771	7,330
Number of guidelines, rules and regulations formulated and issued	12	12	2	2
Number of guidelines, rules and regulations implemented	12	14	2	2
Number of applications filed for transport cooperatives (TCs) accreditation processed within the prescribed time	90	90	100	100
Number of TCs accreditation certificates issued	90	97	55	55
Number of TCs monitored found complying with rules	38	54	70	70
MFO 2				
Development and Promotion Services	6,920	7,824	7,908	8,377
Number of TCs development and promotion plans and programs formulated	6	10	8	8
Number of TCs promotional activities conducted	74	90	50	50
Number of TCs provided technical development assistance	120	282	300	300
Number of TCs capability building programs conducted	136	136	150	150
TOTAL	12,870	14,448	14,679	15,707

FY 2012 MFO BUDGET

By MFO/By Expense Class (In Thousand Pesos)

Particulars	PS	MOOE	CO	TOTAL	% Share
MFO 1 Regulatory and Accreditation Services	5,222	2,108	-	7,330	46.67%
MFO 2 Development and Promotion Services	6,079	2,198	100	8,377	53.33%
TOTAL	11,301	4,306	100	15,707	100%
% Share	71.95%	27.41%	0.64%	100%	

By MFO (Total Budget = P15,707,000)



By Expense Class (Total Budget = P15,707,000)

