



## DEPARTMENT OF TRANSPORTATION AND COMMUNICATIONS

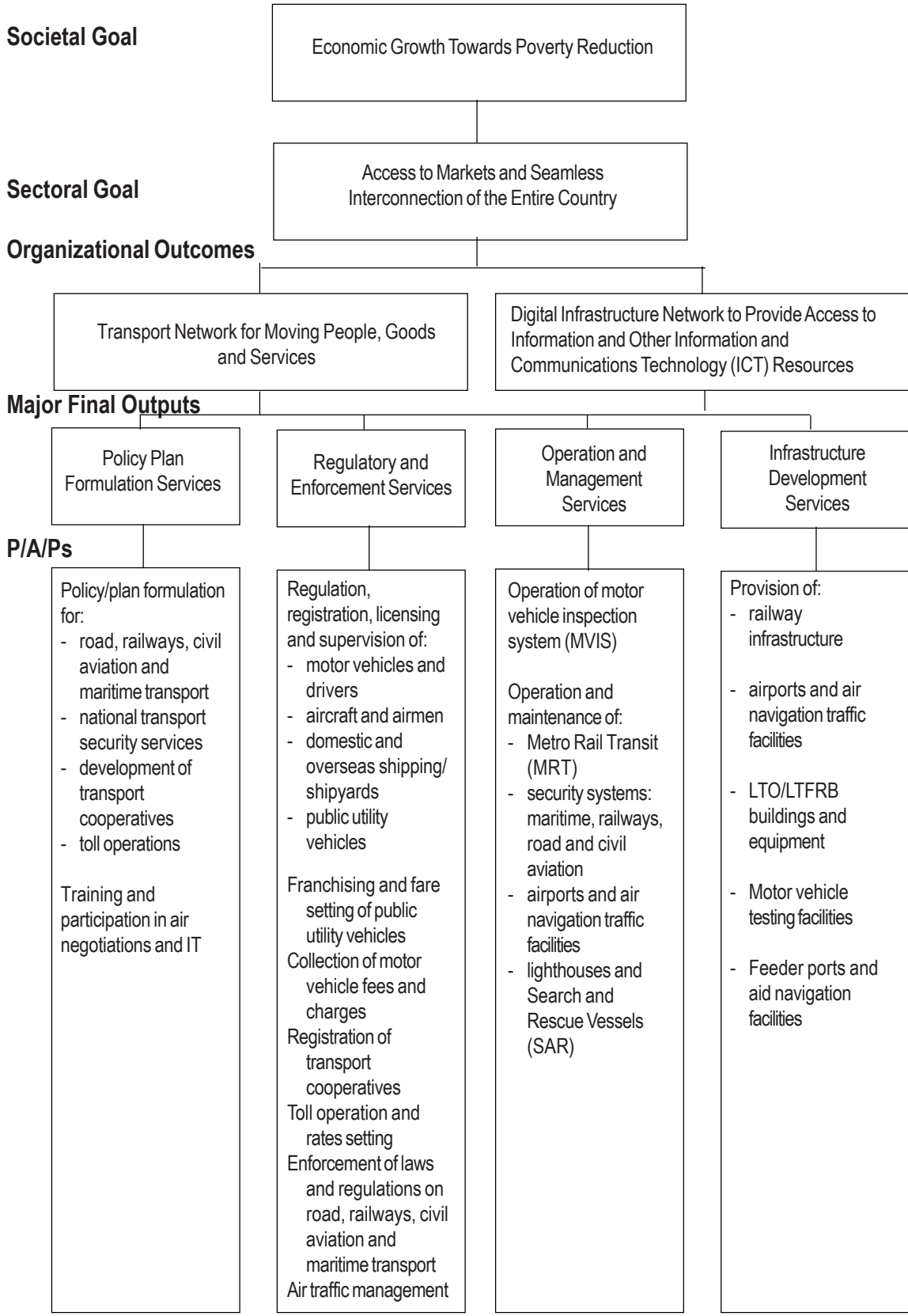
### Legal Basis

- **Executive Order No. 546** (July 23, 1979) converted the then Ministry of Public Works, Transportation and Communications (MPWTC) into two ministries, namely, the Ministry of Transportation and Communications (MOTC) and the Ministry of Public Works and Highways (MPWH), and redefined the roles and priorities of each ministry.
- **Executive Order No. 125** (January 30, 1987) converted the MOTC to the Department of Transportation and Communications (DOTC), structurally and functionally reorganized the Department, and defined its powers and functions.
- **Executive Order No. 125–A** (April 13, 1987) clarified and further modified the structural and functional organization of the DOTC as provided under EO No. 125 to ensure fulfillment of its mandate and attainment of its objectives.

### Mandate

The Department of Transportation and Communications (DOTC) develops, promotes, implements and maintains integrated and strategic transportation and communications systems that will ensure safe, reliable, responsive, and viable services to accelerate economic development and to better serve the transport and communications needs of the people.

**LOGICAL FRAMEWORK (DOTC)**

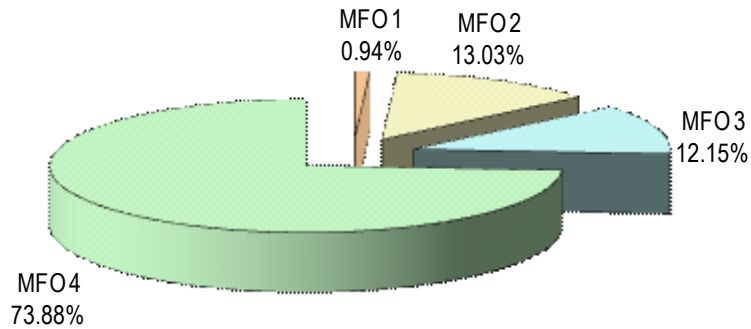


## FY 2012 MFO Budget

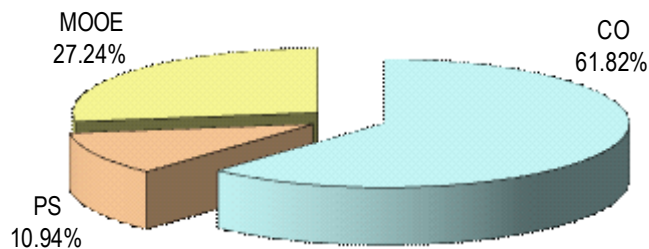
### By MFO/By Expense Class (In Thousand Pesos)

Particulars	PS	MOOE	CO	TOTAL	% Share
<b>MFO 1</b> Policy Plan Formulation Services	130,342	188,201	5,595	324,138	0.94%
<b>MFO 2</b> Regulatory and Enforcement Services	1,768,970	2,431,562	305,449	4,505,981	13.03%
<b>MFO 3</b> Operation and Management Services	1,759,499	2,278,213	161,949	4,199,661	12.15%
<b>MFO 4</b> Infrastructure Development Services	125,848	4,519,091	20,899,765	25,544,704	73.88%
<b>TOTAL</b>	<b>3,784,659</b>	<b>9,417,067</b>	<b>21,372,758</b>	<b>34,574,484</b>	<b>100%</b>
<b>% Share</b>	<b>10.94%</b>	<b>27.24%</b>	<b>61.82%</b>	<b>100%</b>	

**By MFO**  
(Total Budget = P34,574,484,000)



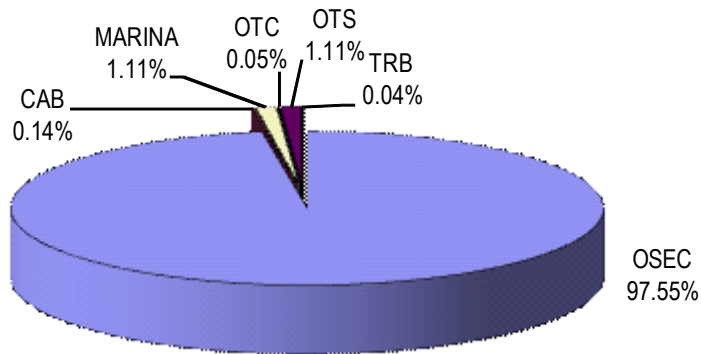
**By Expense Class**  
(Total Budget = P34,574,484,000)



**By Agency/By MFO**  
(In Thousand Pesos)

Particulars	MFO 1 Policy Plan Formulation Services	MFO 2 Regulatory & Enforcement Services	MFO 3 Operation & Management Services	MFO 4 Infrastructure Development Services	TOTAL	% Share
Office of the Secretary	160,096	4,169,866	3,853,393	25,544,704	33,728,059	97.55%
Civil Aeronautics Board	33,271	16,700			49,971	0.14%
Maritime Industry Authority	89,280	294,463			383,743	1.11%
Office of Transportation Cooperatives	7,330	8,377			15,707	0.05%
Office for Transportation Security	26,036	11,158	346,268		383,462	1.11%
Toll Regulatory Board	8,125	5,417			13,542	0.04%
<b>TOTAL</b>	<b>324,138</b>	<b>4,505,981</b>	<b>4,199,661</b>	<b>25,544,704</b>	<b>34,574,484</b>	<b>100%</b>
<b>% Share</b>	<b>0.94%</b>	<b>13.03%</b>	<b>12.15%</b>	<b>73.88%</b>	<b>100%</b>	

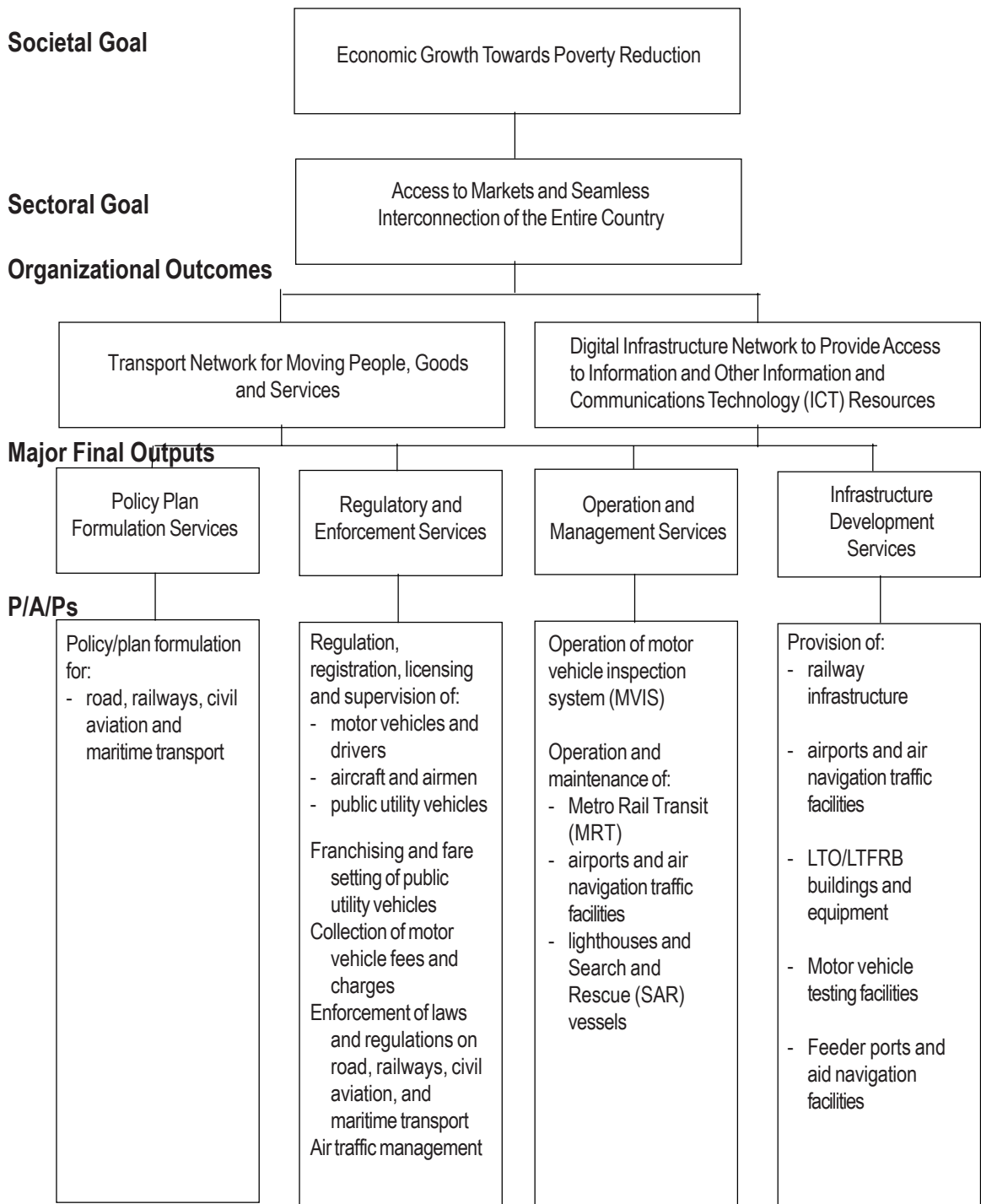
**By Agency**  
(Total Budget = P34,574,484,000)



**By Agency/By Expense Class**  
(In Thousand Pesos)

Particulars	PS	MOOE	CO	TOTAL	% Share
Office of the Secretary	3,360,096	9,050,305	21,317,658	33,728,059	97.55%
Civil Aeronautics Board	29,093	15,878	5,000	49,971	0.14%
Maritime Industry Authority	165,613	218,130	-	383,743	1.11%
Office of Transportation Cooperatives	11,301	4,306	100	15,707	0.05%
Office for Transportation Security	209,708	123,754	50,000	383,462	1.11%
Toll Regulatory Board	8,848	4,694	-	13,542	0.04%
<b>TOTAL</b>	<b>3,784,659</b>	<b>9,417,067</b>	<b>21,372,758</b>	<b>34,574,484</b>	<b>100%</b>
<b>% Share</b>	<b>10.94%</b>	<b>27.24%</b>	<b>61.82%</b>	<b>100%</b>	

**LOGICAL FRAMEWORK (DOTC-OSEC)**



## PERFORMANCE MEASURES AND TARGETS

(Amounts in Thousand Pesos)

Particulars	2010		2011	2012
	Target/ Amount	Actual/ Amount	Target/ Amount	Target/ Amount
<b>MFO 1</b>				
<b>Policy Plan Formulation Services</b>	<b>158,108</b>	<b>172,012</b>	<b>180,499</b>	<b>160,096</b>
Number of road transport policies/plans adopted over number of policies/plans formulated	7	17	6	14
Number of rail transport policies/plans adopted over number of policies/plans formulated	10	4	9	10
Number of air transport policies/plans adopted over number of policies/plans formulated	7	2	9	5
Number of maritime transport policies/plans adopted over number of policies/plans formulated	10	8	13	16
<b>MFO 2</b>				
<b>Regulatory and Enforcement Services</b>	<b>3,068,756</b>	<b>3,292,796</b>	<b>3,603,640</b>	<b>4,169,866</b>
Number of motor vehicles registered	6,467,712	6,633,634	6,898,967	7,176,250
Number of driver's licenses and permits issued	3,960,472	4,269,679	4,355,056	4,438,800
% of franchise Certificate of Public Convenience (CPC) approved as a % of total number of complying application received	74%	117%	85%	85%
% of departing vessels inspected over total number of departing vessels per PPA records	100%	105%	100%	100%
<b>MFO 3</b>				
<b>Operation and Management Services</b>	<b>2,092,809</b>	<b>7,585,936</b>	<b>2,911,386</b>	<b>3,853,393</b>
% of MRT 3 "Trips" with travel time of 100.4 seconds or less	97.60%	97.60%	97.60%	97.60%
MRT 3 revenues	P1.969 B	P1.917 B	P1.914 B	P2.815 B
MRT 3 operating expenses plus payables under BLT agreement (excluding loan amortization)	P7.681 B	P7.632 B	P9.603 B	P8.871 B
MRT 3 fare subsidy	P32.22	P33.08	P45.21	P33.40
% of Search and Rescue (SAR) actual operations conducted within response time to total number of distress calls received and confirmed	100%	105%	100%	100%

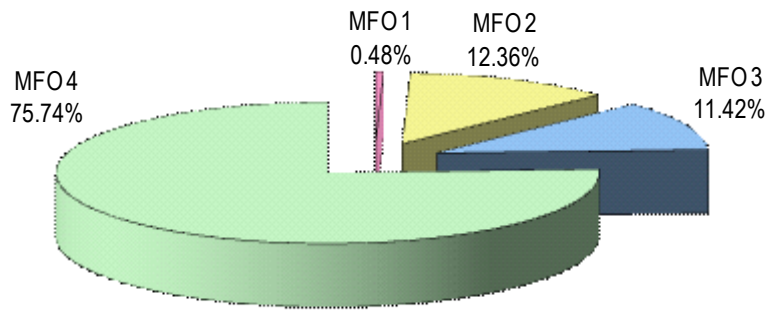
Particulars	2010		2011	2012
	Target/ Amount	Actual/ Amount	Target/ Amount	Target/ Amount
<b>MFO 4</b>				
<b>Infrastructure development services</b>	<b>11,168,125</b>	<b>8,834,338</b>	<b>24,935,098</b>	<b>25,544,704</b>
Number of locally-funded projects completed over number of total locally-funded projects started/on-going within plans, specifications, schedules and budget				
-Airports and Navigational Facilities	-	-	-	17
-Ports and Lighthouses	-	-	-	137
-Building and Structures	-	-	-	102
-Other Projects	-	-	-	18
Number of foreign-assisted projects implemented within plans, specification, schedules and budget				
1% to 20% complete		1	1	1
21% to 50% complete	1		1	
51% to 75% complete		1		1
76% to 99% complete	1		1	
100% complete				1
<b>TOTAL</b>	<b>16,487,798</b>	<b>19,885,082</b>	<b>31,630,623</b>	<b>33,728,059</b>

### FY 2012 MFO Budget

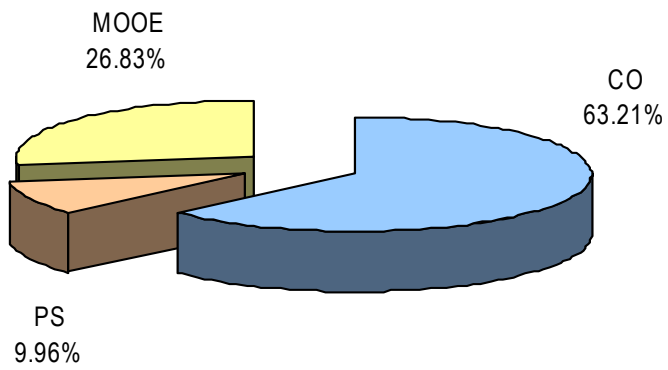
#### By MFO/By Expense Class (In Thousand Pesos)

Particulars	PS	MOOE	CO	TOTAL	% Share
<b>MFO 1</b>					
Policy Plan and Formulation Services	56,778	102,723	595	160,096	0.48%
<b>MFO 2</b>					
Regulatory and Enforcement Services	1,609,155	2,255,362	305,349	4,169,866	12.36%
<b>MFO 3</b>					
Operation and Management Services	1,568,315	2,173,129	111,949	3,853,393	11.42%
<b>MFO 4</b>					
Infrastructure Development Services	125,847	4,519,091	20,899,766	25,544,704	75.74%
<b>TOTAL</b>	<b>3,360,095</b>	<b>9,050,305</b>	<b>21,317,659</b>	<b>33,728,059</b>	<b>100%</b>
<b>% Share</b>	<b>9.96%</b>	<b>26.83%</b>	<b>63.21%</b>	<b>100.00%</b>	

**By MFO**  
**(Total Budget = P33,728,059,000)**



**By Expense Class**  
**(Total Budget = P33,728,059,000)**







## Civil Aeronautics Board

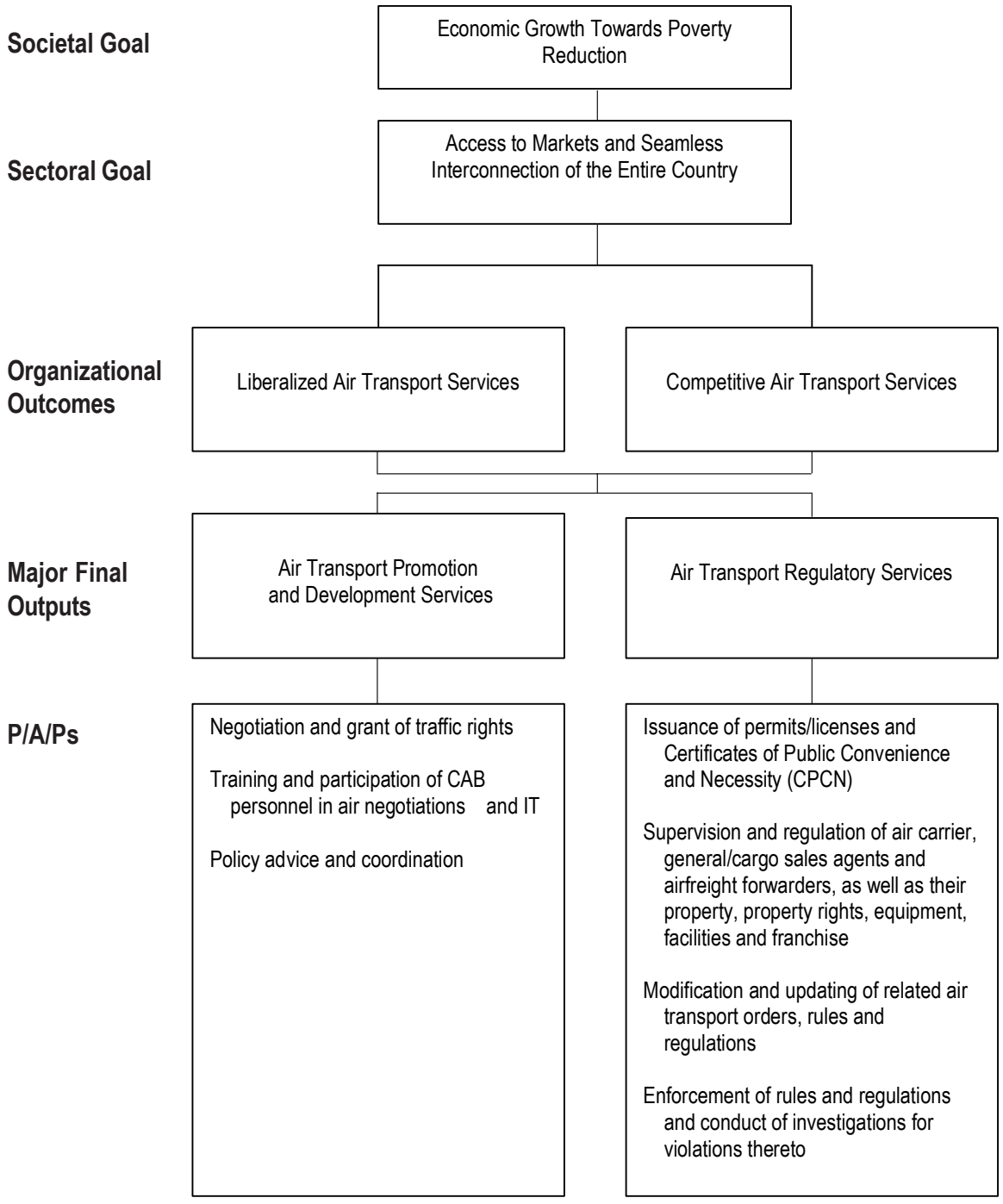
### Legal Basis

- **Executive Order No. 94** (October 4, 1947) created the Civil Aeronautics Board (CAB), vesting it with functions relating to the economic aspects of air transportation.
- **Republic Act No. 776** (June 20, 1952) reorganized the CAB, transferring it from the Department of Tourism to the control and supervision of the Department of Transportation and Communications (DOTC), and tasking it with the regulation of civil aeronautics in the Philippines.

### Mandate

The Civil Aeronautics Board (CAB) regulates, promotes, and develops the economic aspect of civil aviation in the Philippines and ensures that existing civil aviation policies are adopted by domestic and foreign commerce.

**LOGICAL FRAMEWORK (CAB)**



## PERFORMANCE MEASURES AND TARGETS

(Amounts in Thousand Pesos)

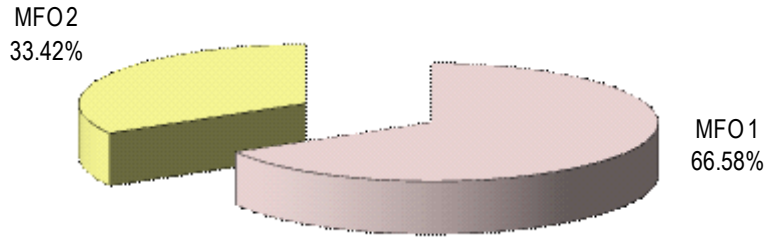
Particulars	FY 2010		FY 2011	FY 2012
	Target/Amount	Actual/Amount	Target/Amount	Target/Amount
<b>MFO 1</b>				
<b>Air Transport Promotion and Development Services</b>	<b>25,786</b>	<b>33,571</b>	<b>25,187</b>	<b>36,082</b>
Number of air agreement negotiated	8	14	8	8
Percentage of policy papers submitted within the prescribed time	85%	2%	80%	80%
Percentage of chartered flights approved within the prescribed time	60 / 63 95%	253 / 401 or 401%	301 / 317 or 95%	316 / 333 or 95%
<b>MFO 2</b>				
<b>Air Transport Regulatory Services</b>	<b>14,350</b>	<b>14,078</b>	<b>15,369</b>	<b>13,889</b>
Percentage of new/renewal of permits and licenses and CPCN issued within the prescribed time	40 / 44 or 90%	52 / 44 or 118%	71 / 79 or 90%	75 / 83 or 90%
Percentage of petitions (unopposed and with complete requirements) processed within the prescribed time	4,800 / 5,389 or 90%	2,522 / 5,389 or 47%	2,340 / 2,600 or 90%	2,457 / 2,730 or 90%
Percentage of filed cases/complaints resolved within the prescribed time	150 / 167 or 90%	107 / 167 or 81%	103 / 115 or 90%	109 / 121 or 90%
Percentage of compliance with annual review	520/572 or 90%	428/527 or 81%	527/586 or 90%	553/615 or 90%
Percentage of applications for renewal of Certificate of Registration processed within the prescribed time	610 / 640 or 95%	471 / 640 or 73%	464 / 489 95%	487 / 513 95%
Percentage of verifications and services processed within the prescribed time	560,000 / 616,000 or 90%	564,000 / 616,000 or 89%	524,000 / 570,000 or 92%	551,000 / 598,000 or 92%
<b>TOTAL</b>	<b>40,136</b>	<b>47,649</b>	<b>40,556</b>	<b>49,971</b>

**FY 2012 MFO BUDGET**

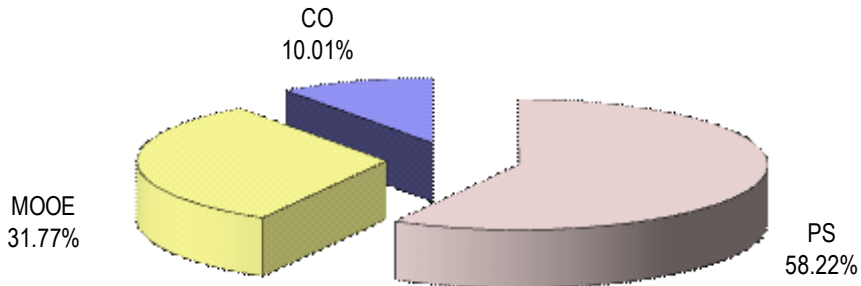
**By MFO/By Expense Class**  
(In Thousand Pesos)

Particulars	PS	MOOE	CO	TOTAL	% Share
<b>MFO 1</b>					
Air Transport Promotion and Development Services	18,093	10,178	5,000	33,271	66.58%
<b>MFO 2</b>					
Air Transport Regulatory Services	11,000	5,700	-	16,700	33.42%
<b>TOTAL</b>	<b>29,093</b>	<b>15,878</b>	<b>5,000</b>	<b>49,971</b>	<b>100%</b>
<b>% Share</b>	<b>58.22%</b>	<b>31.77%</b>	<b>10.01%</b>	<b>100%</b>	

**By MFO**  
(Total Budget = P49,971,000)



**By Expense Class**  
(Total Budget = P49,971,000)





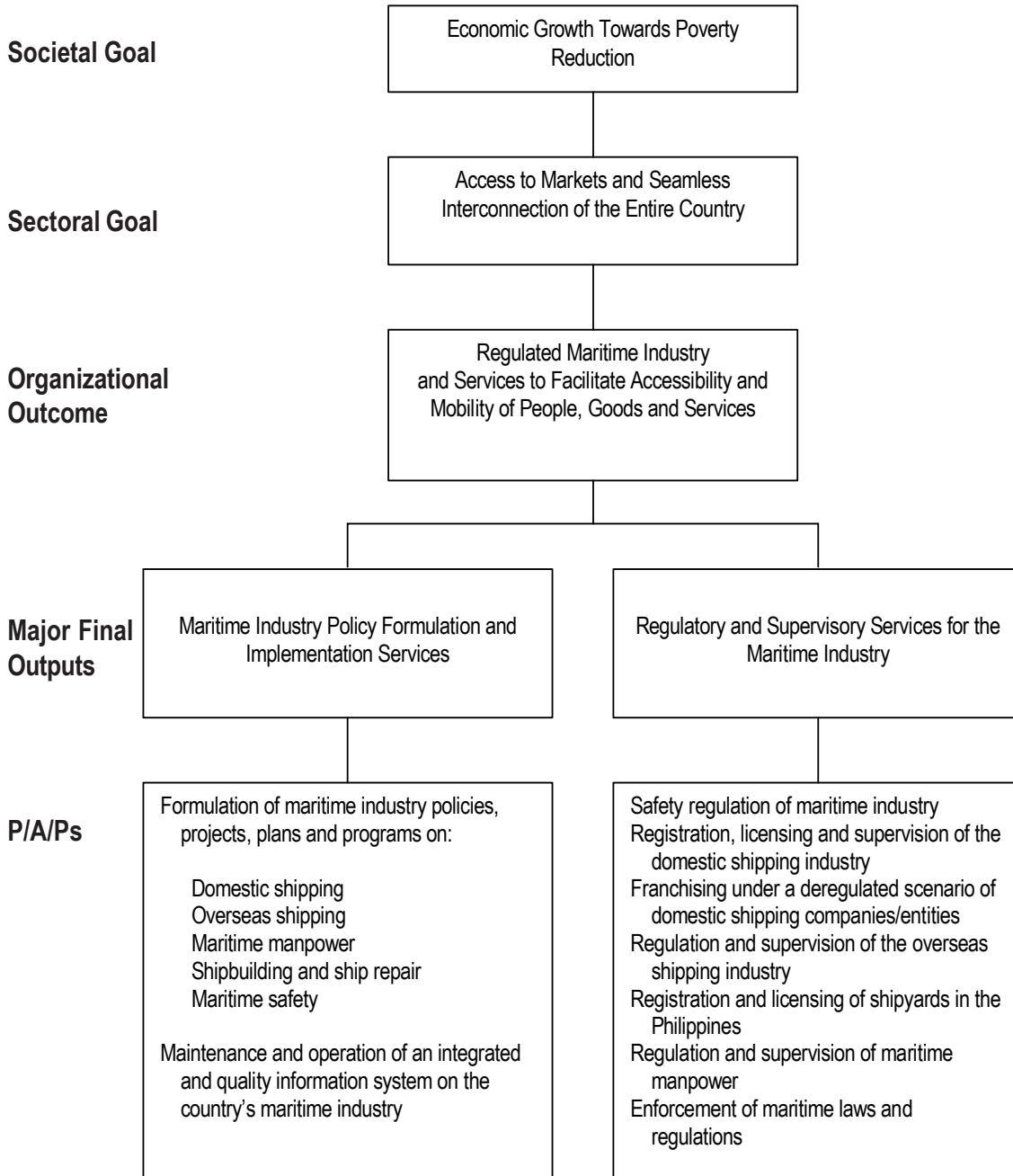
### **Legal Basis**

- **Presidential Decree No. 474** (June 1, 1974), otherwise known as the Maritime Industry Decree of 1974, created the Maritime Industry Authority (MARINA) under the Office of the President to integrate the development, promotion, and regulation of the maritime industry in the country.
- **Executive Order No. 546** (July 23, 1979) attached the Maritime Industry Authority to the Department of Transportation and Communications (DOTC) for policy and program coordination.
- **Executive Order No. 125** (January 30, 1987), as amended by EO No. 125-A, reorganized the DOTC and defined the powers and functions of the Department and the agencies under it, including the MARINA.
- **Republic Act No. 9295** (May 3, 2004), otherwise known as the Domestic Shipping Development Act of 2004, defined the jurisdiction, powers and duties of MARINA to promote the development of Philippine domestic shipping, shipbuilding, ship repair and ship breaking, and other reforms.

### **Mandate**

The Maritime Industry Authority (MARINA) develops Philippine domestic shipping, shipbuilding, ship repair and ship breaking through investment incentives, deregulation of rates/operation, enhancement of safety standards, compulsory insurance coverage for passengers and cargoes, reasonable fines and penalties, and constructive measures for a strong and competitive merchant fleet.

**LOGICAL FRAMEWORK (MARINA)**



## PERFORMANCE MEASURES AND TARGETS

(Amounts in Thousand Pesos)

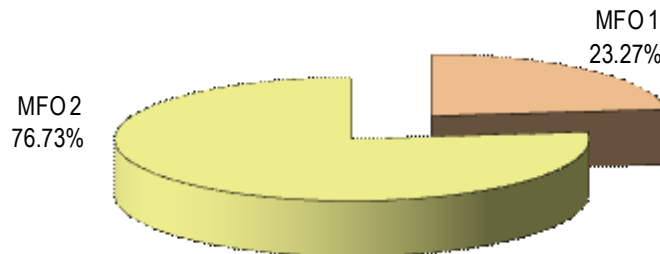
Particulars	FY 2010		FY 2011	FY 2012
	Target/ Amount	Actual/ Amount	Target/ Amount	Target/ Amount
<b>MFO 1</b>				
<b>Maritime Industry Policy Formulation and Implementation Services</b>	<b>43,277</b>	<b>59,258</b>	<b>58,393</b>	<b>89,280</b>
Number of policies, rules and regulations issued within the target period for the following sectors:				
- domestic shipping	3	2	3	5
- overseas shipping	0	1	1	0
- maritime manpower	0	0	2	3
- shipbuilding and shiprepair	0	1	1	3
- maritime safety	0	4	3	0
- administrative support	0		0	0
Number and % of bilateral agreements signed within the target vis-à-vis negotiated period		0	1	1
Number and % of Information System (IS) plans completed/ implemented during the year	2	2	2	2
<b>MFO 2</b>				
<b>Regulatory and Supervisory Services for the Maritime Industry</b>	<b>259,946</b>	<b>298,762</b>	<b>281,329</b>	<b>294,463</b>
Number of ships registered/validated within the prescribed standard processing time (SPT) over the total registered fleet	5,195	10,356	5,059	5,059
Number of licenses/certificates/permits renewed over the estimated total no. of licenses/certificates/permits to be renewed	37,307	43,634	35,289	35,289
Number of ships/shipping companies audited over the total number of certified shipping companies/ships	472	496	523	523
Number and % of quasi-judicial issuances over the total number of certified shipping companies/ships	756	860	769	769
Number and % of Seafarer's Identification and Record Books (SIRBs) issued/renewed within the prescribed SPT	150,000	144,891	180,379	176,900
<b>TOTAL</b>	<b>303,223</b>	<b>358,020</b>	<b>339,722</b>	<b>383,743</b>

## FY 2012 MFO BUDGET

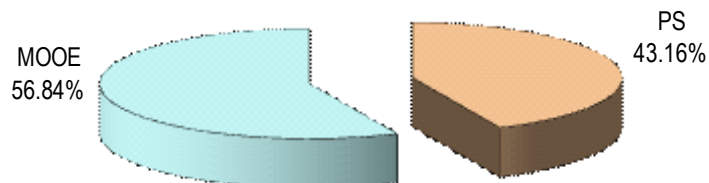
### By MFO/By Expense Class (In Thousand Pesos)

Particulars	PS	MOOE	CO	TOTAL	% Share
<b>MFO 1</b> Maritime Industry Policy Formulation and Implementation Services	31,973	57,307	-	89,280	23.27%
<b>MFO 2</b> Regulatory and Supervisory Services for the Maritime Industry	133,640	160,823	-	294,463	76.73%
<b>TOTAL</b>	<b>165,613</b>	<b>218,130</b>	<b>-</b>	<b>383,743</b>	<b>100%</b>
<b>% Share</b>	<b>43.16%</b>	<b>56.84%</b>	<b>0.00%</b>	<b>100%</b>	

### By MFO (Total Budget = P383,743,000)



### By Expense Class (Total Budget = P383,743,000)







## Office of Transportation Cooperatives

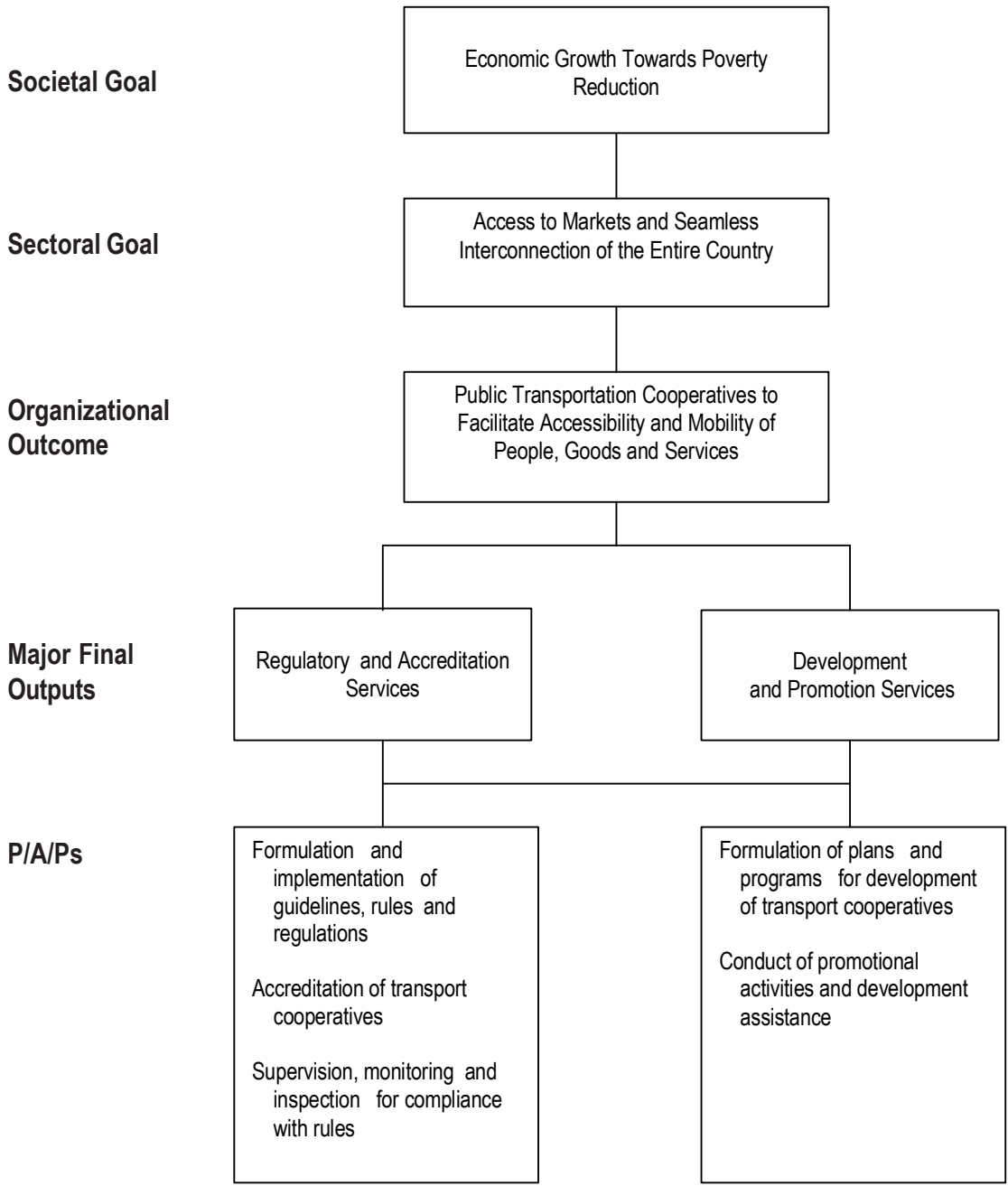
### Legal Basis

- **Executive Order No. 898** (May 28, 1983) created the Office of Transportation Cooperatives (OTC) to promote the growth and development of transportation cooperatives.
- **Presidential Memorandum Order No. 116** (September 15, 2003) directed the OTC, as lead agency, to enhance and intensify the voluntary conversion of tricycle operation/associations into transport service cooperatives.

### Mandate

The Office of Transportation Cooperatives (OTC) promulgates and implements rules and regulations to govern the promotion, organization, regulation, supervision, and development of transportation cooperatives. It leads in encouraging the conversion of Tricycle Operators and Drivers Associations (TODA) into Transport Service Cooperatives (TSCs). The OTC's mission is to gear the transportation cooperatives system towards maximum integration of the public transport system and to uplift the socio-economic condition of the public utility system and the public utility transport workers, particularly the drivers.

**LOGICAL FRAMEWORK (OTC)**



## PERFORMANCE MEASURES AND TARGETS

(Amounts in Thousand Pesos)

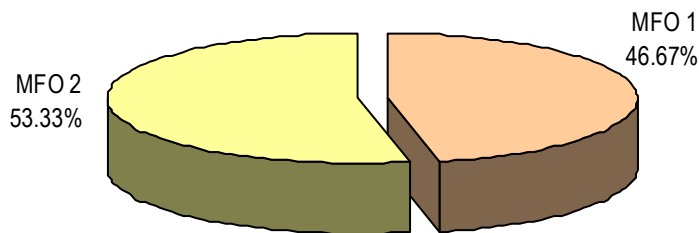
Particulars	FY 2010		FY 2011	FY 2012
	Target/Amount	Actual/Amount	Target/Amount	Target/Amount
<b>MFO 1</b>				
<b>Regulatory and Accreditation Services</b>	<b>5,950</b>	<b>6,624</b>	<b>6,771</b>	<b>7,330</b>
Number of guidelines, rules and regulations formulated and issued	12	12	2	2
Number of guidelines, rules and regulations implemented	12	14	2	2
Number of applications filed for transport cooperatives (TCs) accreditation processed within the prescribed time	90	90	100	100
Number of TCs accreditation certificates issued	90	97	55	55
Number of TCs monitored found complying with rules	38	54	70	70
<b>MFO 2</b>				
<b>Development and Promotion Services</b>	<b>6,920</b>	<b>7,824</b>	<b>7,908</b>	<b>8,377</b>
Number of TCs development and promotion plans and programs formulated	6	10	8	8
Number of TCs promotional activities conducted	74	90	50	50
Number of TCs provided technical development assistance	120	282	300	300
Number of TCs capability building programs conducted	136	136	150	150
<b>TOTAL</b>	<b>12,870</b>	<b>14,448</b>	<b>14,679</b>	<b>15,707</b>

## FY 2012 MFO BUDGET

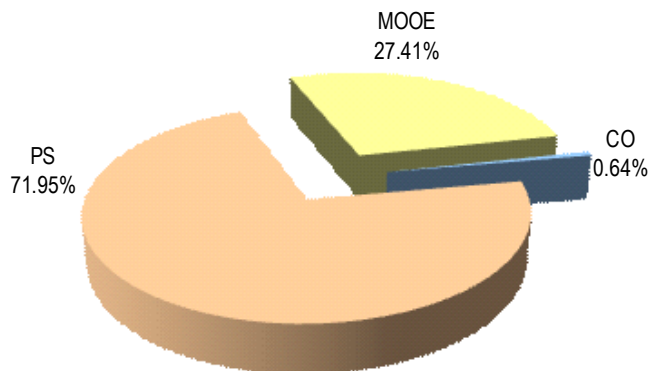
### By MFO/By Expense Class (In Thousand Pesos)

Particulars	PS	MOOE	CO	TOTAL	% Share
<b>MFO 1</b> Regulatory and Accreditation Services	5,222	2,108	-	7,330	46.67%
<b>MFO 2</b> Development and Promotion Services	6,079	2,198	100	8,377	53.33%
<b>TOTAL</b>	<b>11,301</b>	<b>4,306</b>	<b>100</b>	<b>15,707</b>	<b>100%</b>
<b>% Share</b>	<b>71.95%</b>	<b>27.41%</b>	<b>0.64%</b>	<b>100%</b>	

### By MFO (Total Budget = P15,707,000)



### By Expense Class (Total Budget = P15,707,000)





## Office for Transportation Security

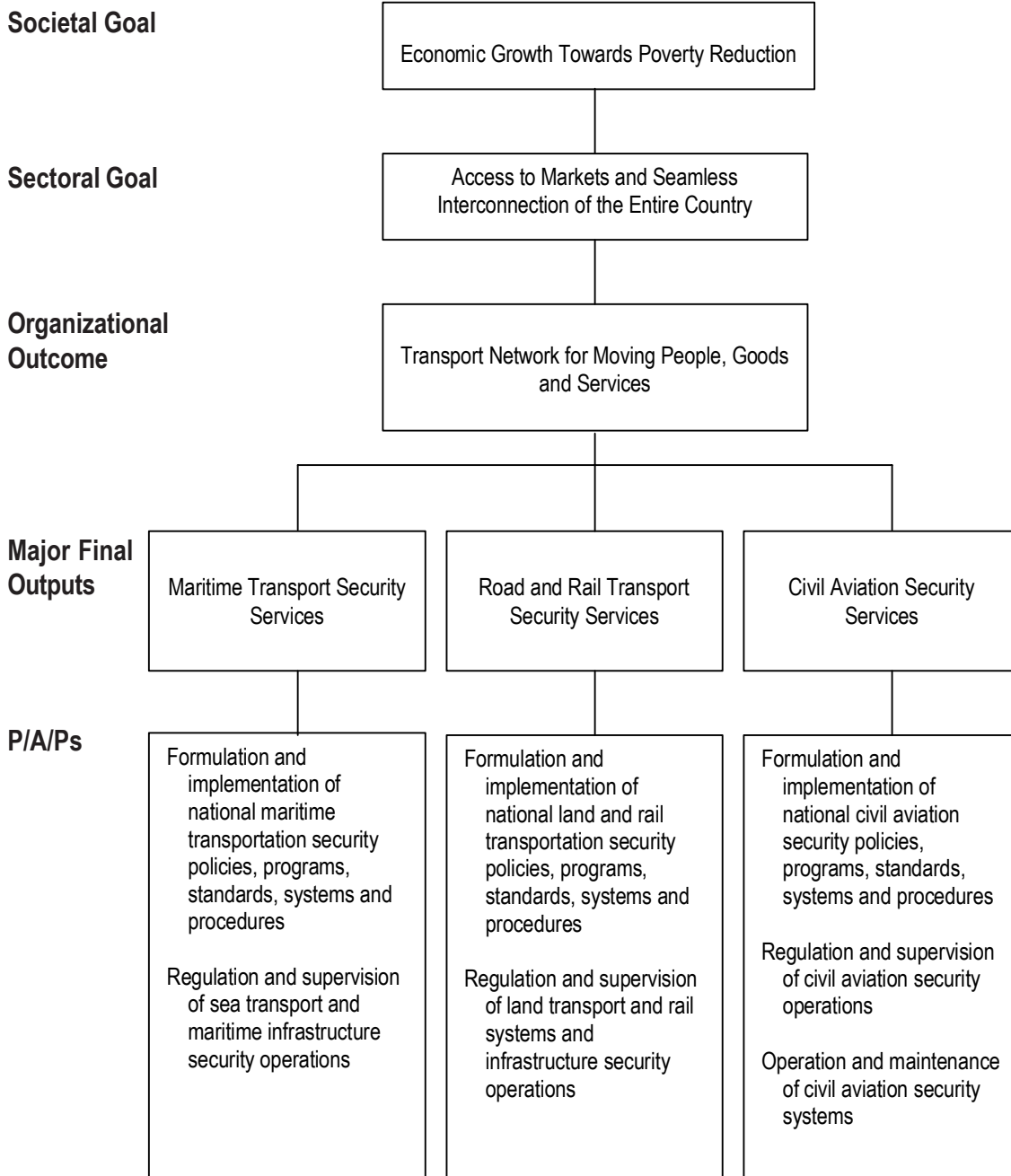
### Legal Basis

- **Executive Order No. 277** (January 30, 2004) created the Office for Transportation Security (OTS) under the Department of Transportation and Communications (DOTC) and reconstituted the National Council for Civil Aviation Security as National Civil Aviation Security Committee (NCASC).
- **Executive Order No. 311** (April 26, 2004) expanded the powers and functions of the OTS, including the powers and functions of NCASC.

### Mandate

The Office for Transportation Security (OTS) is responsible for the security of transportation systems by formulating, implementing, and coordinating security measures, programs, plans, and activities which will enhance the security and safety of the transportation systems of the country.

**LOGICAL FRAMEWORK (OTS)**



## PERFORMANCE MEASURES AND TARGETS

(Amounts in Thousand Pesos)

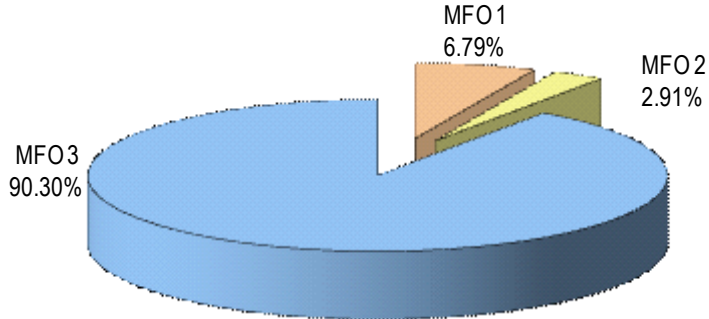
Particulars	FY 2010		FY 2011	FY 2012
	Actual/Amount	Target/Amount	Target/Amount	Target/Amount
<b>MFO 1</b>				
<b>Maritime Transport Security Services</b>	<b>20,602</b>	<b>23,068</b>	<b>24,234</b>	<b>26,036</b>
Number of water Transportation Security Regulations (TSR) issued	2	0	4	4
Number of Statement of Compliance of a Port Facility (SCPF) issued/renewed	56	55	59	59
Number of International Ship Security Certificates (ISSC) issued/renewed	19	10	20	20
Number of National Ship Security Certificates (NSSC) issued	90	106	95	95
<b>MFO 2</b>				
<b>Road &amp; Rail Transport Security Services</b>	<b>8,830</b>	<b>10,535</b>	<b>10,386</b>	<b>11,158</b>
Number of land and rail TSR issued	4	2	4	4
Number of bus operators' security plans, inspected, reviewed and approved	20	53	20	20
Number of light/heavy rail operators' security plans evaluated, reviewed and monitored	67	64	67	67
<b>MFO 3</b>				
<b>Civil Aviation Security Services</b>	<b>272,571</b>	<b>302,544</b>	<b>272,571</b>	<b>346,268</b>
Number of air TSR proposed/drafted and submitted for approval	9	12	12	12
Number of airport security/facility plan reviewed/evaluated and approved	88	88	96	96
Number of aircraft operators' program reviewed/evaluated and approved	33	33	32	32
Number and % of reported breaches of security (incidents/violations) acted upon	50	40	30	0
Number of aviation security screeners trained, qualified and certified	370	371	370	480
<b>TOTAL</b>	<b>302,003</b>	<b>336,147</b>	<b>307,191</b>	<b>383,462</b>

## FY 2012 MFO BUDGET

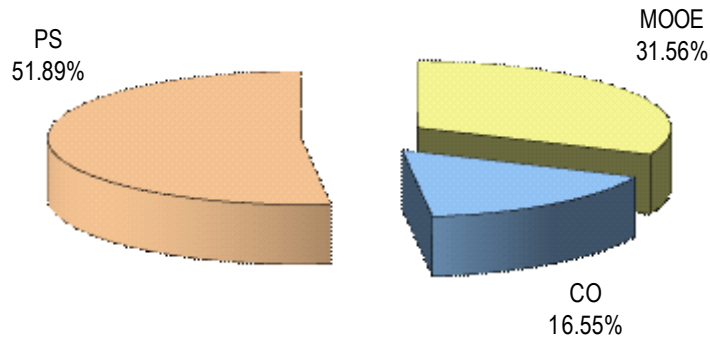
### By MFO/By Expense Class (In Thousand Pesos)

Particulars	PS	MOOE	CO	TOTAL	% Share
<b>MFO 1</b> Maritime Transport Security Services	12,967	13,069	-	26,036	6.79%
<b>MFO 2</b> Road and Rail Transport Security Services	5,557	5,601	-	11,158	2.91%
<b>MFO 3</b> Civil Aviation Security Services	191,184	105,084	50,000	346,268	90.30%
<b>TOTAL</b>	<b>209,708</b>	<b>123,754</b>	<b>50,000</b>	<b>383,462</b>	<b>100%</b>
<b>% Share</b>	<b>51.89%</b>	<b>31.56%</b>	<b>16.55%</b>	<b>100%</b>	

**By MFO**  
(Total Budget = P383,462,000)



**By Expense Class**  
(Total Budget = P383,462,000)







## Toll Regulatory Board

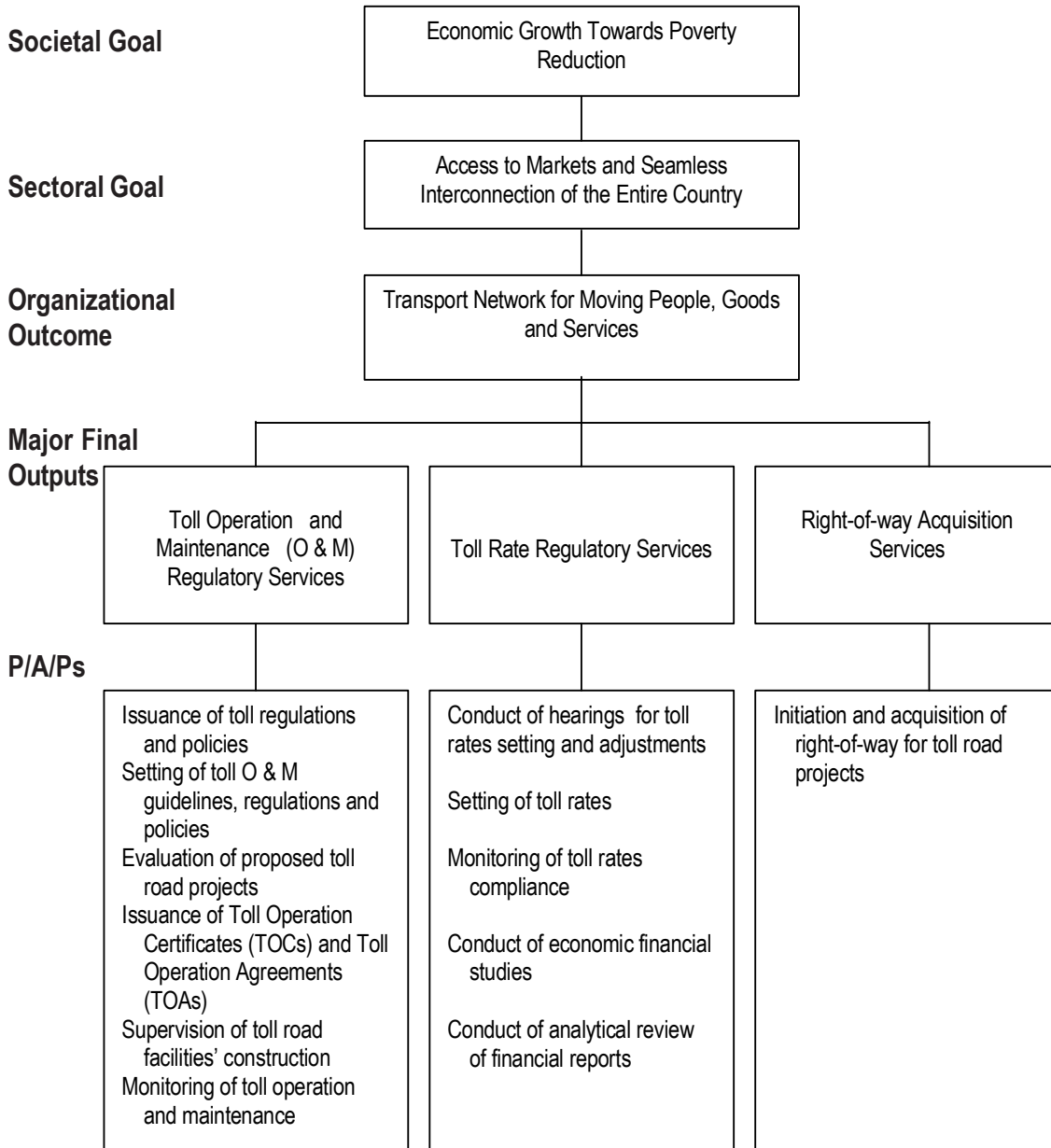
### Legal Basis

- **Presidential Decree No. 1112** (March 31, 1977), otherwise known as the “Toll Operation Decree”, created the Toll Regulatory Board to regulate the establishment of toll facilities.
- **Executive Order No. 133** (October 10, 2002) attached the Toll Regulatory Board to the Department of Transportation and Communications (DOTC).
- **Executive Order No. 644** (July 30, 2007) transferred the TRB from DOTC to the Department of Public Works and Highways.
- **Executive Order No. 686** (December 19, 2007) transferred back the TRB from DPWH to DOTC and clarifies the functions of the TRB.

### Mandate

The Toll Regulatory Board (TRB) exercises close supervision, monitoring, and regulation of the construction, operation, and maintenance of toll facilities, and the collection of toll fees as well as the rate that may be charged for the use of these facilities.

**LOGICAL FRAMEWORK (TRB)**



N. B. Function transferred to DPWH per E.O. No. 686 dated December 19, 2007

**PERFORMANCE MEASURES AND TARGETS**  
(Amounts in Thousand Pesos)

Particulars	FY 2010		FY 2011	FY 2012
	Target/ Amount	Actual/ Amount	Target/ Amount	Target/ Amount
<b>MFO 1</b>				
<b>Toll Operation and Maintenance (O &amp; M) Regulatory Services</b>	<b>7,245</b>	<b>8,739</b>	<b>7,979</b>	<b>8,125</b>
Number of toll guidelines, regulations and policies issued	2	3	2	2
Number of proposed projects evaluated	3	5	3	2
Percentage of proposed projects approved by the Board as against those submitted	50%	100%	50%	50%
Number of Toll Operation Certificates (TOCs) issued	4	3	2	0
Number of toll roads supervised for O & M	6	7	8	8
Number of toll roads construction monitored	4	4	3	2
Percentage of toll operators complying with the toll road O & M manuals	100%	100%	100%	100%
<b>MFO 2</b>				
<b>Toll Rate Regulatory Services</b>	<b>4,830</b>	<b>5,825</b>	<b>5,319</b>	<b>5,417</b>
Percentage of application of initial toll rates set over the total number of applications received	100%	100%	100%	100%
Percentage of application for toll rate adjustments acted upon within the prescribed time	100%	100%	100%	100%
Percentage of toll rate compliance	100%	100%	100%	100%
Number of financial reports reviewed and evaluated (audited)	6	6	8	8
<b>MFO 3</b>				
<b>Right-of-way Acquisition Services*</b>	-	-	-	-
ROW acquired in sq. m. of lot on time				
<b>TOTAL</b>	<b>12,075</b>	<b>14,564</b>	<b>13,298</b>	<b>13,542</b>

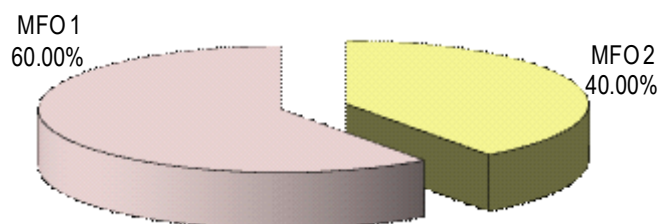
\* N. B. Function transferred to DPWH per E.O. No. 686 dated December 19, 2007.

## FY 2012 MFO BUDGET

### By MFO/By Expense Class (In Thousand Pesos)

Particulars	PS	MOOE	CO	TOTAL	% Share
<b>MFO 1</b> Toll Operation and Maintenance Regulatory Services	5,309	2,816	-	8,125	60.00%
<b>MFO 2</b> Toll Rate Regulatory Services	3,539	1,878	-	5,417	40.00%
<b>TOTAL</b>	<b>8,848</b>	<b>4,694</b>	<b>-</b>	<b>13,542</b>	<b>100%</b>
<b>% Share</b>	<b>65.34%</b>	<b>34.66%</b>	<b>-</b>	<b>100%</b>	

### By MFO (Total Budget = P13,542,000)



### By Expense Class (Total Budget = P13,542,000)

