



Civil Aeronautics Board

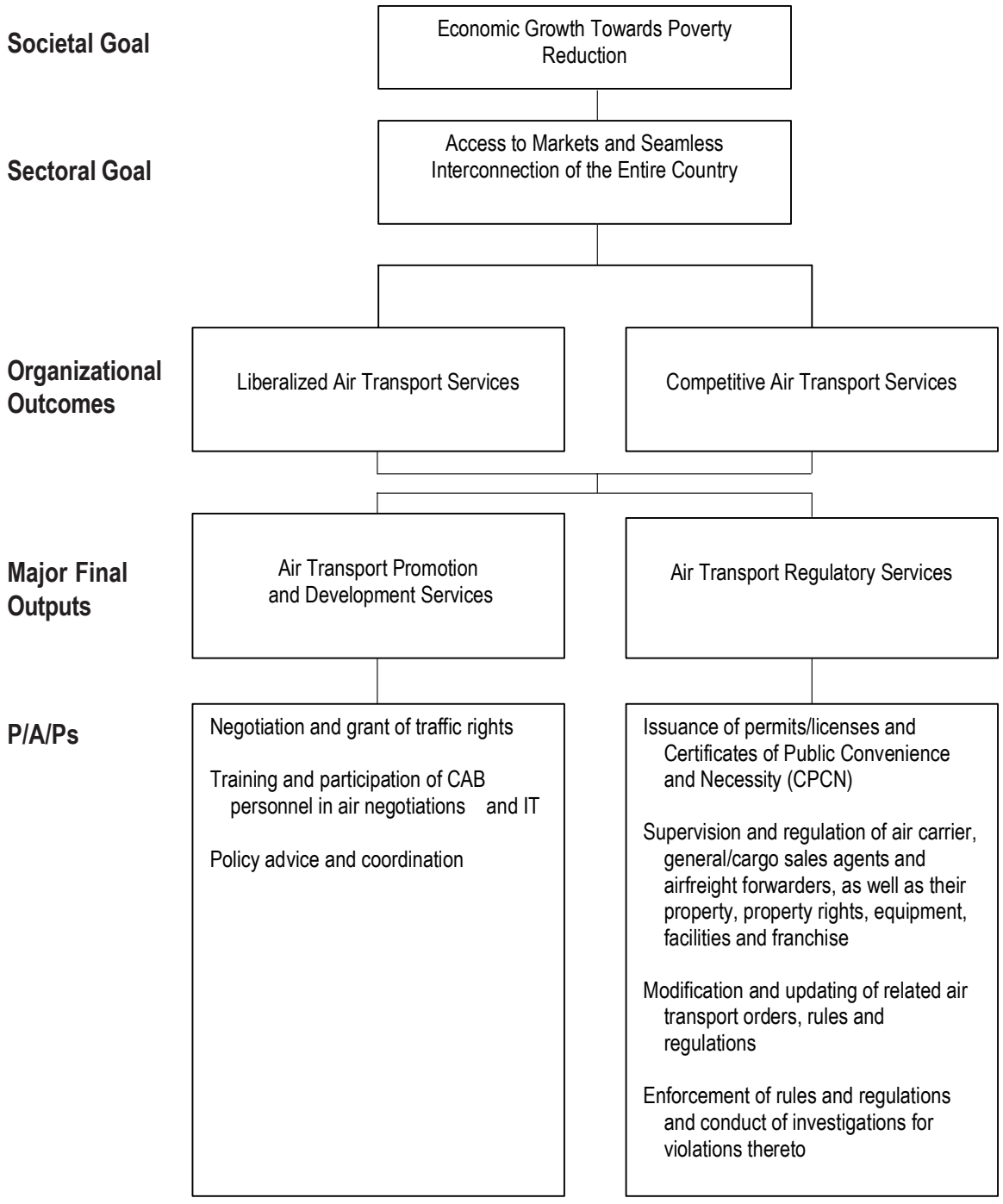
Legal Basis

- **Executive Order No. 94** (October 4, 1947) created the Civil Aeronautics Board (CAB), vesting it with functions relating to the economic aspects of air transportation.
- **Republic Act No. 776** (June 20, 1952) reorganized the CAB, transferring it from the Department of Tourism to the control and supervision of the Department of Transportation and Communications (DOTC), and tasking it with the regulation of civil aeronautics in the Philippines.

Mandate

The Civil Aeronautics Board (CAB) regulates, promotes, and develops the economic aspect of civil aviation in the Philippines and ensures that existing civil aviation policies are adopted by domestic and foreign commerce.

LOGICAL FRAMEWORK (CAB)



PERFORMANCE MEASURES AND TARGETS

(Amounts in Thousand Pesos)

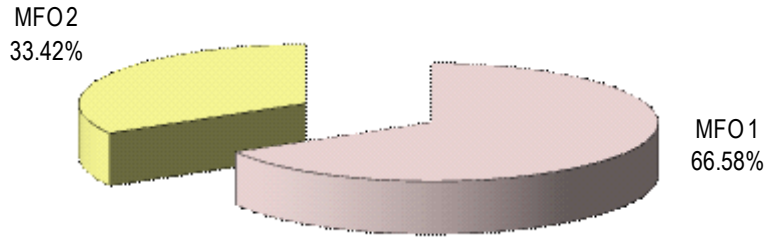
Particulars	FY 2010		FY 2011	FY 2012
	Target/Amount	Actual/Amount	Target/Amount	Target/Amount
MFO 1				
Air Transport Promotion and Development Services	25,786	33,571	25,187	36,082
Number of air agreement negotiated	8	14	8	8
Percentage of policy papers submitted within the prescribed time	85%	2%	80%	80%
Percentage of chartered flights approved within the prescribed time	60 / 63 95%	253 / 401 or 401%	301 / 317 or 95%	316 / 333 or 95%
MFO 2				
Air Transport Regulatory Services	14,350	14,078	15,369	13,889
Percentage of new/renewal of permits and licenses and CPCN issued within the prescribed time	40 / 44 or 90%	52 / 44 or 118%	71 / 79 or 90%	75 / 83 or 90%
Percentage of petitions (unopposed and with complete requirements) processed within the prescribed time	4,800 / 5,389 or 90%	2,522 / 5,389 or 47%	2,340 / 2,600 or 90%	2,457 / 2,730 or 90%
Percentage of filed cases/complaints resolved within the prescribed time	150 / 167 or 90%	107 / 167 or 81%	103 / 115 or 90%	109 / 121 or 90%
Percentage of compliance with annual review	520/572 or 90%	428/527 or 81%	527/586 or 90%	553/615 or 90%
Percentage of applications for renewal of Certificate of Registration processed within the prescribed time	610 / 640 or 95%	471 / 640 or 73%	464 / 489 95%	487 / 513 95%
Percentage of verifications and services processed within the prescribed time	560,000 / 616,000 or 90%	564,000 / 616,000 or 89%	524,000 / 570,000 or 92%	551,000 / 598,000 or 92%
TOTAL	40,136	47,649	40,556	49,971

FY 2012 MFO BUDGET

By MFO/By Expense Class
(In Thousand Pesos)

Particulars	PS	MOOE	CO	TOTAL	% Share
MFO 1					
Air Transport Promotion and Development Services	18,093	10,178	5,000	33,271	66.58%
MFO 2					
Air Transport Regulatory Services	11,000	5,700	-	16,700	33.42%
TOTAL	29,093	15,878	5,000	49,971	100%
% Share	58.22%	31.77%	10.01%	100%	

By MFO
(Total Budget = P49,971,000)



By Expense Class
(Total Budget = P49,971,000)

