



Science Education Institute

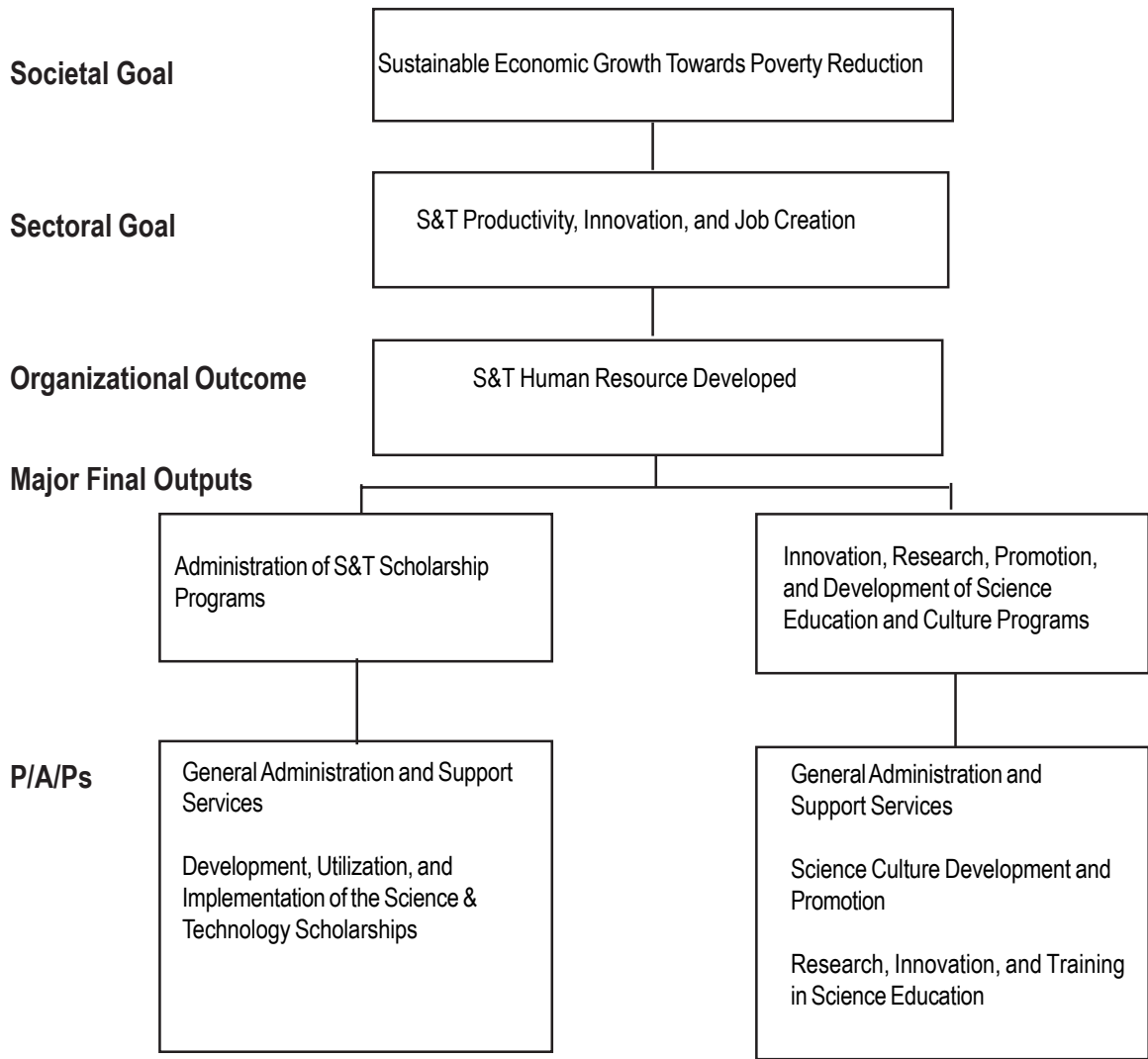
Legal Basis

Executive Order No. 128 (January 30, 1987), otherwise known as the Reorganization Act of the National Science and Technology Authority, created the Science Education Institute.

Mandate

The Science Education Institute (SEI) formulates plans and establishes programs and projects for the promotion and development of science and technology education and training in the field of science and technology in coordination with other institutions of learning. It undertakes science and technology manpower development and administers scholarships, awards, and grants.

LOGICAL FRAMEWORK (SEI)



PERFORMANCE MEASURES AND TARGETS

(Amounts in Thousand Pesos)

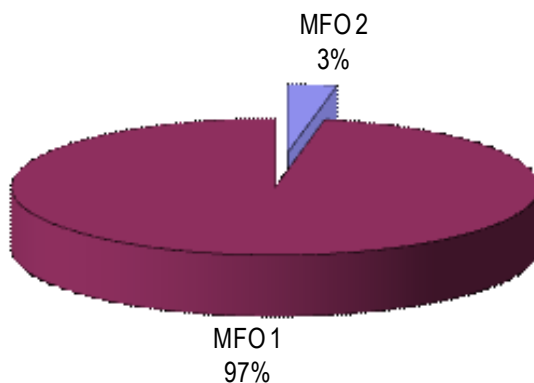
Particulars	FY 2010		FY 2011	FY 2012
	Target/ Amount	Actual/ Amount	Target/ Amount	Target/ Amount
MFO 1	439,314	664,572	474,292	1,326,593
Administration of Science and Technology Scholarship Programs				
Number of scholars supported				
Undergraduate level	10,753	10,142	9,902	9,991
Masters program	91	91	87	2,067
Doctoral program	81	81	77	645
Number of scholar graduates monitored/tracked	10,925	10,856	10,066	12,703
MFO 2	36,031	58,438	36,987	43,019
Promotion and Development of Science Education and Culture Programs				
Number of trainees/beneficiaries				
e-Training	450	450	450	450
Microcontrollers' training	30	30	30	30
Robotics Applications in Training High School Physics	100	100	100	100
Training on Science and Math Investigation	40	40	40	40
Advanced Specialized Training Programs in Science and Mathematics Education	300	720	480	140
Science Camp (Science, Mathematics & Engineering)	65	60	60	60
Number of lessons in secondary science and math digitized	133	174	166	148
Number of modules for elementary English and Filipino digitized	40	40	--	--
Number of Mobile IT Classrooms deployed (MITC)	4	4	4	4
Number of science education databases developed and maintained	12	12	14	4
Number of studies/researches conducted/assisted	5	5	7	7
Number of science and math competitions <i>Conducted/Assisted/Participated</i>				
Local	12	12	8	8
Abroad	5	5	5	5
TOTAL	475,345	723,010	511,279	1,369,612

FY 2012 MFO BUDGET

By MFO/By Expense Class (In Thousand Pesos)

Particulars	PS	MOOE	CO	TOTAL	% SHARE
MFO 1 Administration of S&T Scholarship Programs	12,356	1,313,073	1,164	1,326,593	97%
MFO 2 Innovations, Research, Promotion, and Development of Science Education and Culture Programs	8,671	34,312	36	43,019	3%
Total	21,027	1,347,385	1,200	1,369,612	100%
% Share	1.5%	98.4%	0.1%	100%	

By MFO (Total Budget=P1,369,612,000)



By Expense Class (Total Budget=P1,369,612,000)

