

Metals Industry Research and Development Center

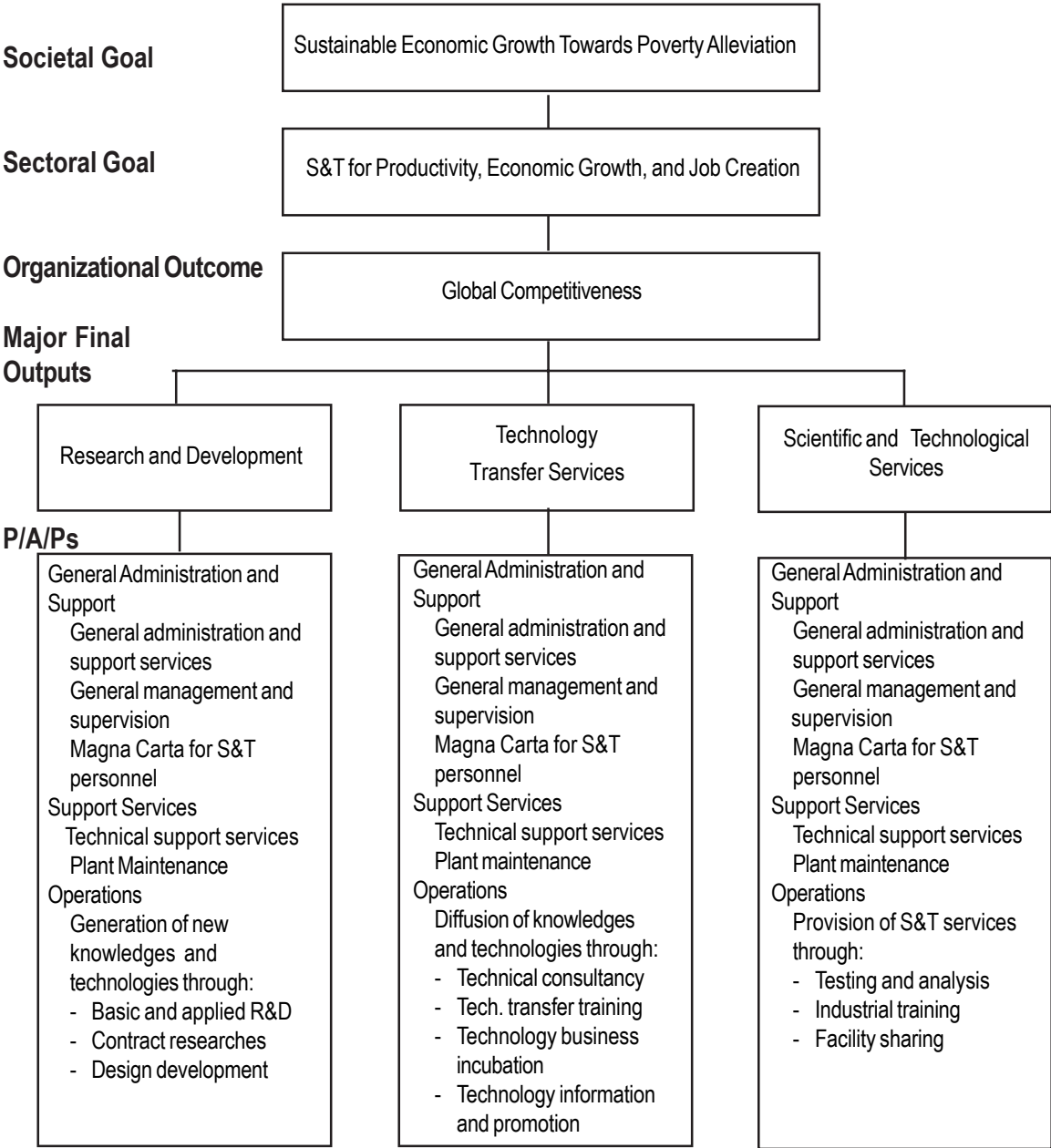
Legal Basis

- **Republic Act No. 4724** (1966) organized the Metals Industry Development Center (MIDC) to work for close support between the government and the industry to foster the advancement of metals, engineering, and allied industries in the country.
- **Republic Act No. 6428** (1972) reorganized and renamed the MIDC into the Metals Industry Research and Development Center (MIRDC), giving it corporate existence under the National Science Development Board (NSDB).
- **Executive Order No. 602** (1980) transferred MIRDC from the then NSDB to the Ministry of Trade and Industry, now the Department of Trade and Industry (DTI), for policy and program coordination and direction.
- **Presidential Decree No. 1765** (1981) reoriented MIRDC thrust from research and development to direct assistance to the metals industry.
- **Executive Order No. 128** (1987) transferred the MIRDC from the DTI to the Department of Science and Technology (DOST) as an attached agency.
- **Executive Order No. 494** (1992) transformed the MIRDC into a regular government agency under the DOST.

Mandate

The Metals Industry Research and Development Center (MIRDC) provides both the government and the private sector in the metals and engineering industry with professional management and technical expertise on training of engineers and technicians, information exchange, trade accreditation services, quality control and testing of metal products, research and development, and business economics advisory services.

LOGICAL FRAMEWORK (MIRDC)



PERFORMANCE MEASURES AND TARGETS

(Amounts in Thousand Pesos)

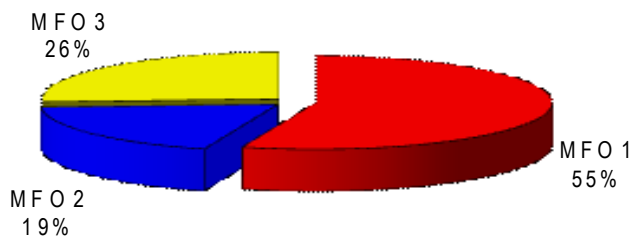
Particulars	FY2010		FY2011	FY2012
	Target/ Amount	Actual/ Amount	Target/ Amount	Target/ Amount
MFO 1				
Research & Development	36,191	56,317	53,601	134,833
No. of projects implemented	198	162	200	200
New	192	156	194	191
Ongoing	6	6	6	9
No. of intellectual properties applied/approved	6	7	6	7
No. of scientific/technical papers prepared vis-à-vis published	11/1	11/0	10/1	10/1
Amount of income generated	1,900	3,198	2,433	2,433
MFO 2				
Technology Transfer Services	21,779	40,312	27,435	45,893
No. of clients served	775	1,377	775	800
RDI direct clients	361	408	370	365
RO supported clients	414	969	405	435
No. of technology transfer agreements	16	9	16	18
Amount of income generated	4,390	5,166	5,390	5,390
MFO 3				
Scientific & Technological Services	37,659	51,139	47,042	63,778
No. of clients served	1,590	1,544	1,590	1,590
Testing and metrology	1,100	1,079	1,100	1,100
Industrial training	200	200	200	200
Facility sharing	290	265	290	290
No. of Services Rendered	4,420	6,048	4,470	4,490
Testing and metrology	3,100	4,267	3,100	3,100
Industrial training	700	720	700	720
Facility sharing	620	1,061	670	670
Amount of Income Generated	22,710	24,618	24,660	24,660
Testing and metrology	13,150	15,888	13,500	13,500
Industrial training	2,800	1,990	2,800	2,800
Facility sharing	6,760	6,740	8,360	8,360
TOTAL	95,629	147,768	128,078	244,504

FY 2012 MFO BUDGET

By MFO/By Expense Class (In Thousand Pesos)

Particulars	PS	MOOE	CO	TOTAL	% SHARE
MFO 1					
Research and Development	31,979	81,678	21,176	134,833	55%
MFO 2					
Technology Transfer Services	19,099	20,765	6,029	45,893	19%
MFO 3					
Scientific & Technological Services	29,109	26,780	7,889	63,778	26%
Total	80,187	129,223	35,094	244,504	100%
% Share	33%	53%	14%	100%	

By MFO (Total Budget=P244,504,000)



By Expense Class (Total Budget=P244,504,000)

