



National Wages and Productivity Commission

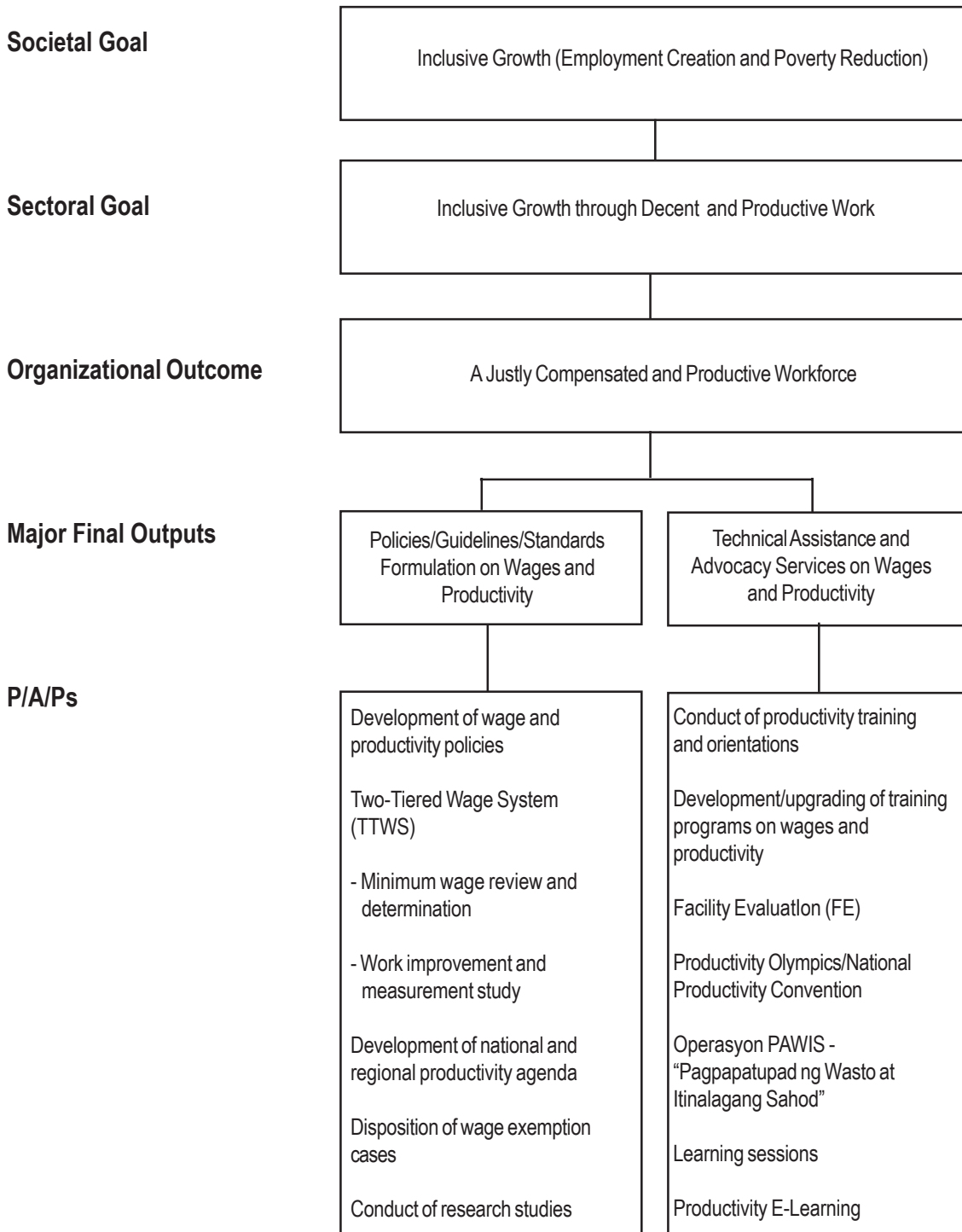
Legal Basis

Republic Act No. 6727 (July 1, 1989), Wage Rationalization Act of 1989, created the National Wages and Productivity Commission (NWPC) and the Regional Tripartite Wages and Productivity Boards (RTWPBs).

Mandate

The National Wages and Productivity Commission (NWPC) develops policies and guidelines on wages, incomes, and productivity. It exercises technical and administrative supervision over the RTWPBs which implement the wages, incomes, and productivity policies and programs in their respective regions.

LOGICAL FRAMEWORK (NWPC)



PERFORMANCE MEASURES AND TARGETS

(Amounts in Thousand Pesos)

| Particulars | FY 2010 | | FY 2011 | FY 2012 |
|--|--|---|--|--|
| | Target/ Amount | Actual/ Amount | Target/ Amount | Target/ Amount |
| MFO 1 | | | | |
| Policies/Guidelines/Standards Formulation on Wages and Productivity | 83,287 | 89,789 | 91,235 | 121,852 |
| Development of Wage & Productivity Policies | | | | |
| No. of technical papers prepared and/or policies developed/recommended/adopted | 6 | 15 | 6 | 6 |
| No. of Regional Wage-Price situationer reports submitted | 64 Quarterly Reports/4 Consolidated Reports prepared | 64 Quarterly Reports/4 Consolidated Reports prepared | 64 Quarterly Reports/4 Consolidated Reports prepared | 64 Quarterly Reports/4 Consolidated Reports prepared |
| No. of Wage Orders (WOs) & Implementing Rules & Regulations issued (IRRs) | 16 (1/Reg'l Board) | 15 WOs/IRRs Issued | 16 (1/Reg'l Board) | 16 (1/Reg'l Board) |
| Two-Tiered Wage System (TTWS) implemented | | Conceptual and operational framework on TTWS developed Memo on the use of poverty threshold as additional reference data for the first-tier issued | Pilot - tested in RB IV-A | TTWS implemented |
| Work Improvement and Measurement Study (WMS) | | | 50% of requests acted upon | 50% of requests acted upon |
| Facility Evaluation (FE) | | | 60% of requests acted upon | 60% of requests acted upon |
| Disposition of Wage Exemption Cases | | | | |
| Disposition Rate on: | | | | |
| -Wage exemption cases filed with the regional boards | 85% | 58% | 85% | 85% |
| -Appeals on WO/exemption filed with the Commission | 85% | 100% | 85% | 85% |

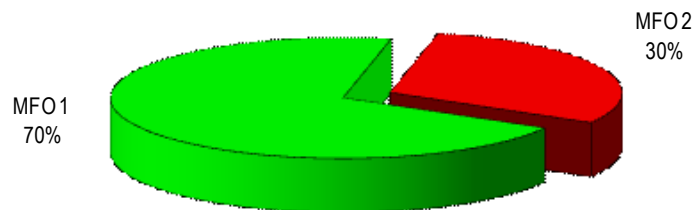
| Particulars | FY 2010 | | FY 2011 | FY 2012 |
|---|------------------------------------|------------------------------------|------------------------------------|------------------------------------|
| | Target/ Amount | Actual/ Amount | Target/ Amount | Target/ Amount |
| Conduct of Research Studies No. of research studies/reports conducted/ completed and submitted | 6 | 5 | 6 | 6 |
| MFO 2 | | | | |
| Technical Assistance and Advocacy Services On Wages and Productivity | 50,673 | 49,169 | 53,582 | 51,982 |
| Technical Assistance | | | | |
| Productivity Training/Orientation | | | | |
| -No. of Micro Small Medium Enterprises (MSMEs) provided with productivity training programs/ orientations | 5,600 | 8,260 | 6,000 | 6,000 |
| -No. of MSMEs provided with technical assistance on productivity improvement/installation of PIPs | 32 | 37 | 32 (2/RB) | 32 (2/RB) |
| Productivity Olympics | | | | |
| -No. of awards given / NPC conducted | 9 awards given | NPC conducted | 9 awards given | NPC conducted |
| Learning Sessions on Wages and Productivity | | | | |
| -No. of sessions conducted | 12 | 14 | 12 | 12 |
| -No. of participants | 600 | 780 | 300 | 300 |
| -No. of companies benefited | 120 | 504 | 160 | 160 |
| Operation PAWIS (Pagpapatupad ng Wasto at Itinalagang Sahod) | | | | |
| -No. of clients reached thru advocacy services | 150,000 | 205,536 | 150,000 | 150,000 |
| Non-Wage Benefits for Workers | | | | |
| -No. of diskwento caravans organized/pledging sessions facilitated nationwide | as per request | | as per request | |
| Program Development/Upgraded | | | | |
| -Number of design/modules developed/upgraded | 3 | 5 | 5 | 5 |
| -ISTIV Accreditation Program | | | | |
| Number of trainers accredited | 10 | 10 | - | - |
| E-Learning Center on Productivity for Workers and Entrepreneurs | | | | |
| -E-Learning Center maintained | E-Learning Center maintained | E-Learning Center maintained | E-Learning Center maintained | E-Learning Center maintained |
| TOTAL | 133,960 | 138,958 | 144,817 | 173,834 |

FY 2012 MFO Budget

By MFO/By Expense Class (In Thousand Pesos)

| Particulars | PS | MOOE | CO | TOTAL | % Share |
|---|---------------|---------------|---------------|----------------|-------------|
| MFO 1 Policies/Guidelines/ Standards Formulation on Wages and Productivity | 59,724 | 28,790 | 33,338 | 121,852 | 70% |
| MFO 2 Technical Assistance and Advocacy Services on Wages and Productivity | 35,074 | 16,908 | | 51,982 | 30% |
| TOTAL | 94,798 | 45,698 | 33,338 | 173,834 | 100% |
| % Share | 55% | 26% | 19% | 100% | |

By MFO
(Total Budget = P173,834,000)



By Expense Class
(Total Budget = P173,834,000)

