



National Maritime Polytechnic

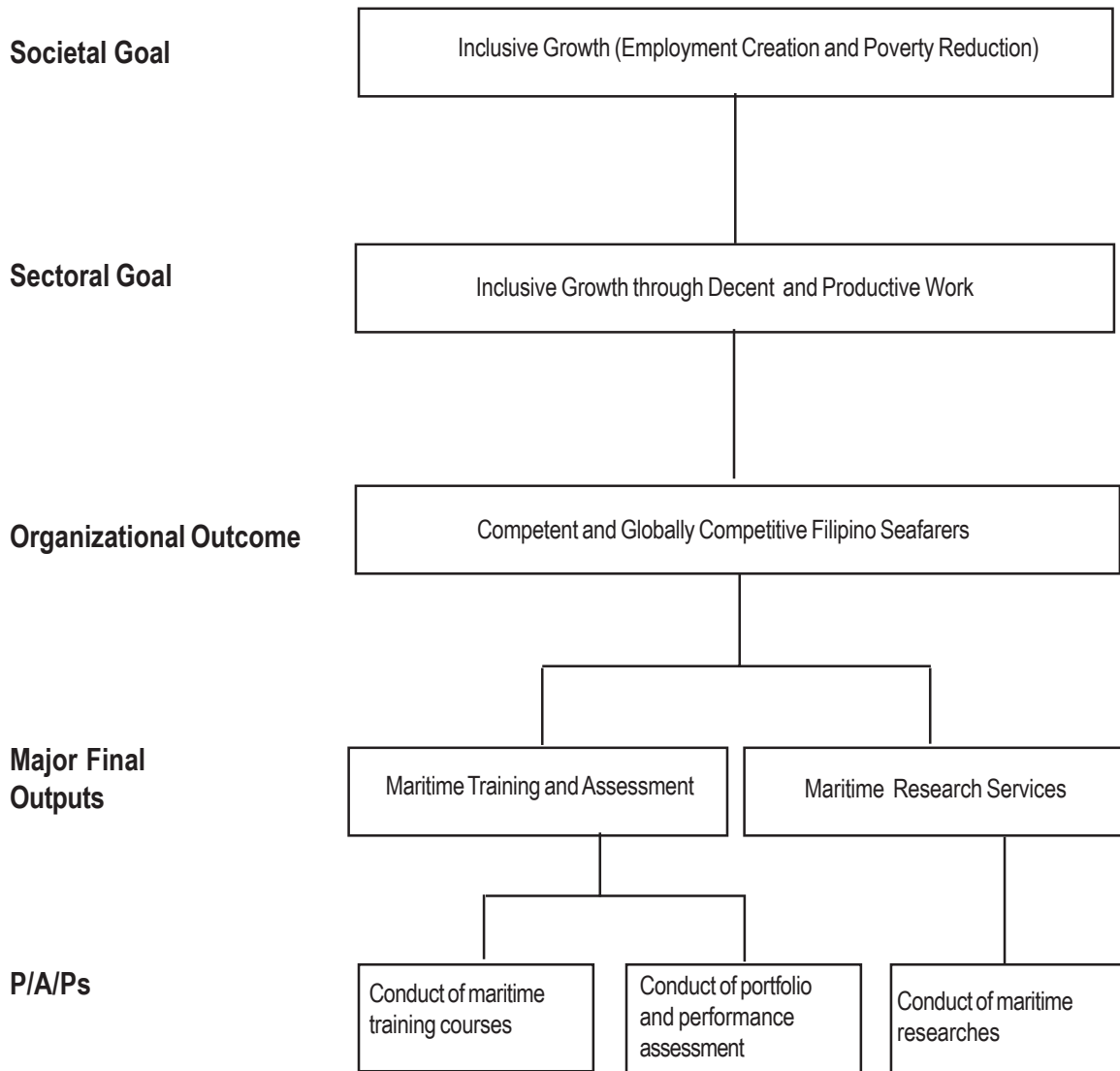
Legal Basis

Presidential Decree No. 1369 (May 1, 1978) created the National Maritime Polytechnic (NMP).

Mandate

The National Maritime Polytechnic (NMP) enhances the employability and competitiveness of Filipino seafarers in the domestic and international labor market through quality training and research. It trains and updates the country's maritime manpower resources through upgrading and specialized programs and researches and studies on the latest maritime technologies and other maritime industry-related matters.

LOGICAL FRAMEWORK (NMP)



PERFORMANCE MEASURES AND TARGETS
(Amounts in Thousand Pesos)

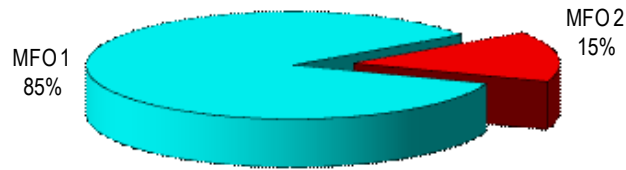
Particulars	FY 2010	FY 2010	FY 2011	FY 2012
	Target/Amount	Actual/Amount	Target/Amount	Target/Amount
MFO 1				
Maritime Training and Assessment	50,539	55,227	79,064	96,546
Conduct of maritime training courses				
Number of certificates issued	16,940	19,068	18,634	20,498
Number of seafarers/trainees trained	7,700	7,923	8,470	9,317
Response time on certificate issuance	at the end of every training period	at the end of every training period	at the end of every training period	at the end of every training period
Conduct of Competency Assessment				
Number of persons assessed	100% of applicants assessed	1,455	100% of applicants assessed	100% of applicants assessed
Ratings (with TESDA) Officers (with PRC)				
Response time on assessment	upon presentation of required documents	upon presentation of required documents	upon presentation of required documents	upon presentation of required documents
Conduct of Proficiency Assessment for the National Assessment Center (NAC)				
Number of persons assessed			100% of applicants assessed	100% of applicants assessed
MFO 2				
Maritime Research Services	16,846	18,412	16,842	17,609
Conduct of maritime researches and studies				
Number of research proposals completed/developed	2	2	2	2
Number of researches/studies completed	2	2	2	2
TOTAL	67,385	73,639	95,906	114,155

FY 2012 MFO BUDGET

By MFO/By Expense Class
(In Thousand Pesos)

Particulars	PS	MOOE	CO	TOTAL	% SHARE
MFO 1 Maritime Training and Assessment	24,576	23,820	48,150	96,546	85%
MFO 2 Maritime Research Services	9,549	8,060	-	17,609	15%
Total	34,125	31,880	48,150	114,155	100%
% Share	30%	28%	42%	100%	

By MFO
(Total Budget = P114,155,000)



By Expense Class
(Total Budget = P114,155,000)

