



## Bureau of Immigration

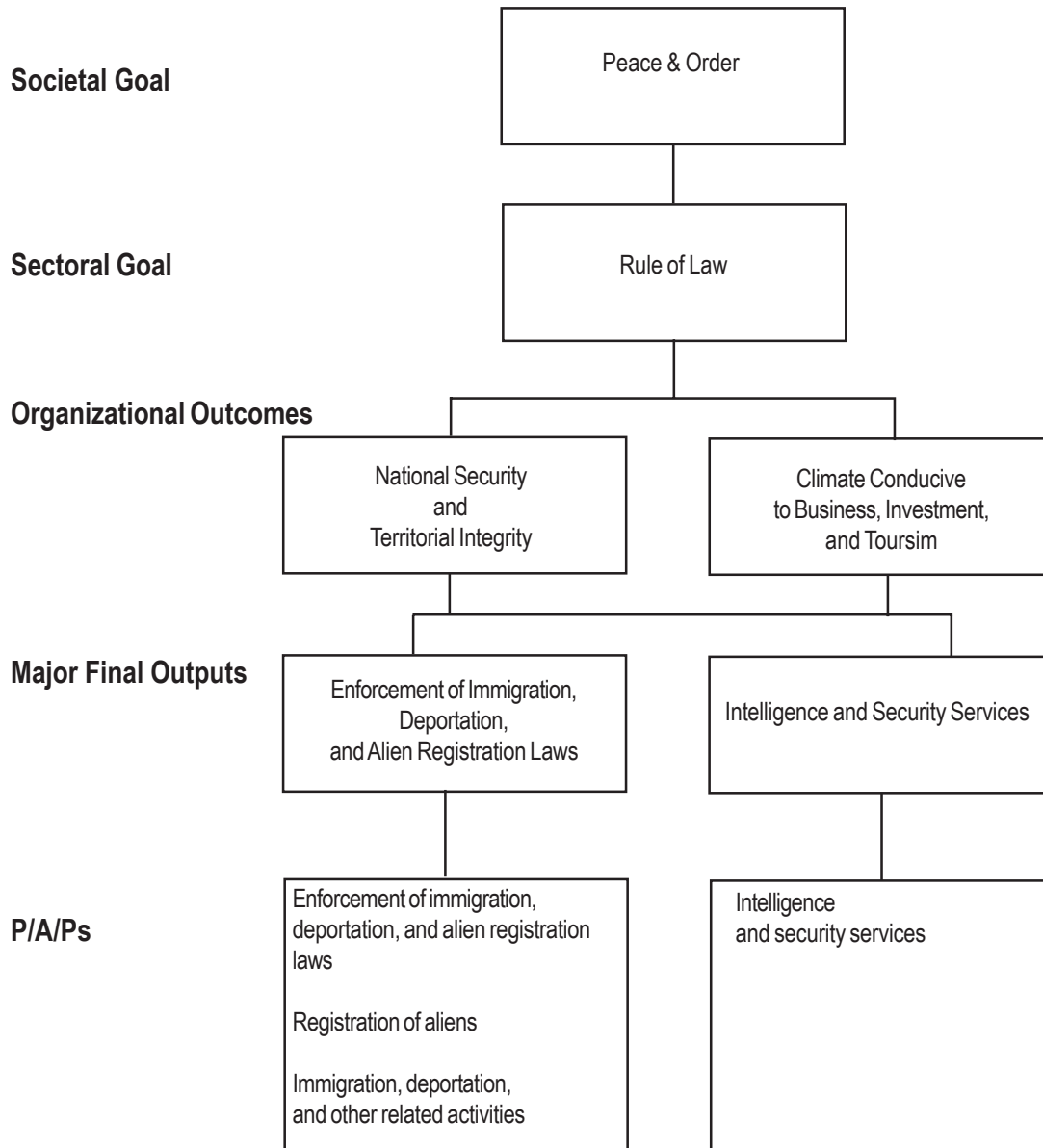
### Legal Basis

- **Commonwealth Act No. 613** (August 26, 1940), or the Philippine Immigration Act of 1940, created the Bureau of Immigration as the Commission on Immigration and Deportation under the Department of Justice (DOJ).
- **Executive Order No. 292** (July 25, 1987), the Administrative Code of 1987, retains the Bureau as an attached agency of the DOJ.
- **Department Circular No. 39** (December 29, 1989) renamed the Commission on Immigration and Deportation to Bureau of Immigration.

### Mandate

The Bureau of Immigration (BI) enforces and administers alien admission and registration as well as immigration and citizenship laws in accordance with the provisions of the Philippine Immigration Act of 1940, an Act to Control and Regulate the Immigration of Aliens into the Philippines.

## LOGICAL FRAMEWORK (BI)



## PERFORMANCE MEASURES AND TARGETS

(Amounts in Thousand Pesos)

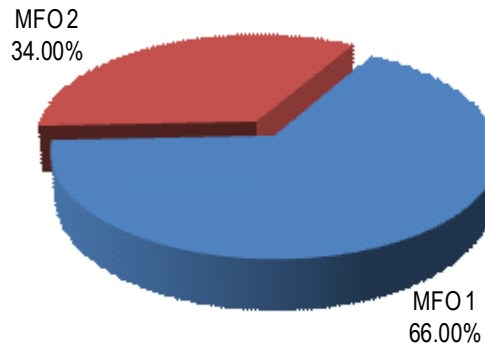
Particulars	FY 2010		FY 2011	FY 2012
	Target/Amount	Actual/Amount	Target/Amount	Target/Amount
<b>MFO 1</b>				
<b>Enforcement of Immigration, Deportation and Alien Registration Laws</b>	<b>238,185</b>	<b>382,629</b>	<b>264,352</b>	<b>320,883</b>
Registration transactions processed				
Aliens registered	23,639	122,415	123,640	124,876
IDs issued to recognized naturalized &/or admitted Filipinos	7,022	6,731	6,808	6,885
Travel documents processed and issued	46,437	66,524	66,524	66,524
Certificate of residence issued	28,882	27,879	28,158	28,439
Duplicate of original issued	669	862	871	879
Immigration Transaction Processed				
No. of incoming & outgoing aliens screened and checked				
admitted upon arrival	3,131,627	3,378,967	3,412,757	3,446,885
cleared for departure	2,878,976	3,432,232	3,466,554	3,501,220
No. of vessels boarded and inspected				
boarded and inspected upon arrival	10,476	10,781	10,889	10,998
cleared on departure	10,463	10,732	10,839	10,948
No. of requests for extension of stay received & processed	394,998	400,238	404,240	408,283
<b>MFO 2</b>				
<b>Intelligence and Security Services</b>	<b>122,702</b>	<b>197,112</b>	<b>136,181</b>	<b>165,304</b>
Intelligence cases processed				
No. of cases detected	1,098	809	1,000	1,010
No. of arrests made	114	163	170	180
No. of illegal aliens detained	231	154	160	170
No. of illegal aliens deported	142	130	140	150
No. of escapees	-	1	-	-
<b>TOTAL</b>	<b>360,887</b>	<b>579,741</b>	<b>400,533</b>	<b>486,187</b>

## FY 2012 MFO BUDGET

### By MFO/By Expense Class (In Thousand Pesos)

Particulars	PS	MOOE	CO	TOTAL	% SHARE
<b>MFO 1</b>					
Enforcement of Immigration, Deportation and Alien Registration Laws	194,596	119,687	6,600	320,883	66.00%
<b>MFO 2</b>					
Intelligence and Security Services	100,247	61,657	3,400	165,304	34.00%
<b>Total</b>	<b>294,843</b>	<b>181,344</b>	<b>10,000</b>	<b>486,187</b>	
<b>%Share</b>	<b>60.64%</b>	<b>37.30%</b>	<b>2.06%</b>		<b>100.00%</b>

**By MFO**  
(Total Budget = P486,187,000)



**By Expense Class**  
(Total Budget = P486,187,000)

