



DEPARTMENT OF HEALTH

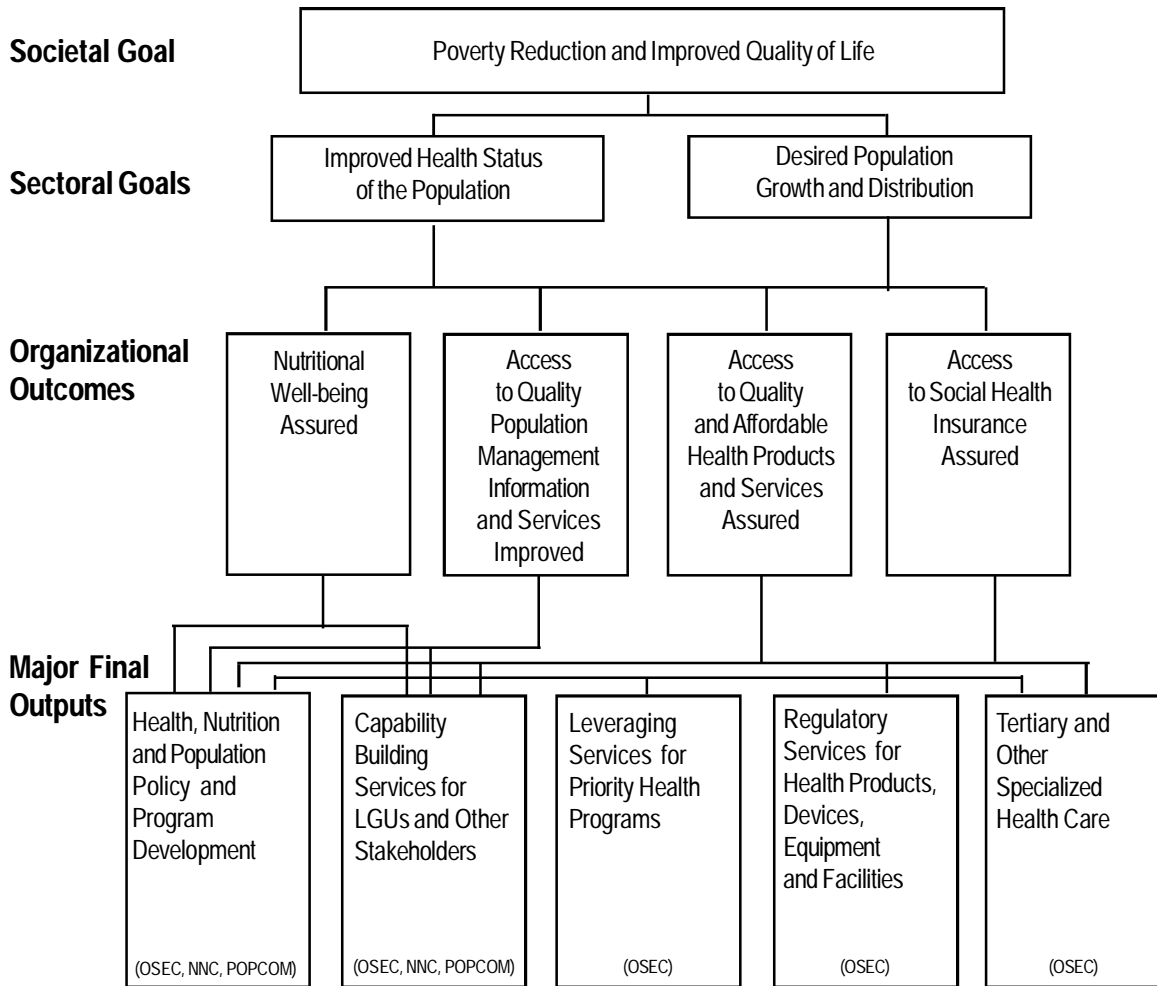
Legal Basis

- **Presidential Proclamation** (June 23, 1898) created the Board of Health in the New Republic under President Emilio Aguinaldo.
- **Executive Order No. 317** (January 1, 1941) elevated the Board of Health into the Department of Health and Public Welfare (DHPW).
- **Executive Order No. 94** (October 4, 1947), pursuant to Republic Act No. 51 or the Reorganization Act of 1946, transferred the Bureau of Public Welfare under the DHPW to the Office of the President and renamed the DHPW to Department of Health (DOH).
- **Executive Order No. 851** (December 2, 1982) reorganized the DOH to synchronize health structures and operations with the shift to parliamentary form of government whence it became known as the Ministry of Health (MOH).
- **Executive Order No. 119** (January 30, 1987) reorganized the MOH (later, under the presidential form, as Department of Health) and clustered agencies and programs under the Office of Public Health Services, Office for Hospital and Facilities Services, Office for Standards and Regulations, and Office for Management Services.
- **Executive Order No. 102** (May 21, 1999) redirected the functions and operations of the Department of Health consistent with the Administrative Code of 1987 (EO 292) and the Local Government Code of 1991 (RA 7160).

Mandate

The Department of Health (DOH) provides assistance to local government units (LGUs), people's organizations (POs), and other members of civil society in effectively implementing programs, projects and services that promote the health and well-being of every Filipino; prevent and control diseases among populations at risks; protect individuals, families and communities exposed to hazards and risks; and treat, manage, rehabilitate individuals affected by disease and disability.

LOGICAL FRAMEWORK (DOH)

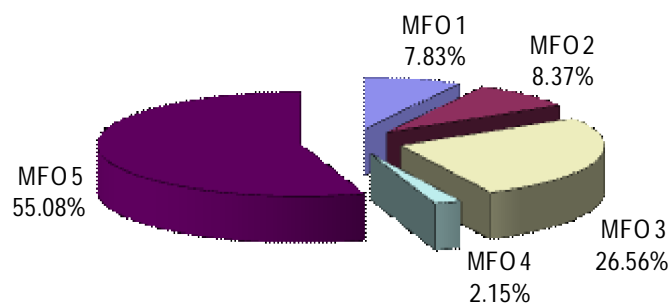


FY 2012 MFO Budget

By Agency/By MFO (In Thousand Pesos)

Particulars	MFO 1	MFO 2	MFO 3	MFO 4	MFO 5	TOTAL	%SHARE
	Health, nutrition and population policy and program development	Capability building services for LGUs and other stockholders	Leveraging services for priority health programs	Regulatory services for health products, devices, equipment and facilities	Tertiary and other specialized health care		
Department of Health (Office of the Secretary)	3,255,648	3,153,957	11,525,875	933,767	23,902,289	42,771,536	98.56%
National Nutrition Council (NNC)	24,369	300,554	-	-	-	324,923	0.75%
Commission on Population (POPCOM)	119,820	179,635	-	-	-	299,455	0.69%
TOTAL	3,399,837	3,634,146	11,525,875	933,767	23,902,289	43,395,914	100.00%
% Share	7.83%	8.37%	26.56%	2.15%	55.08%	100.00%	

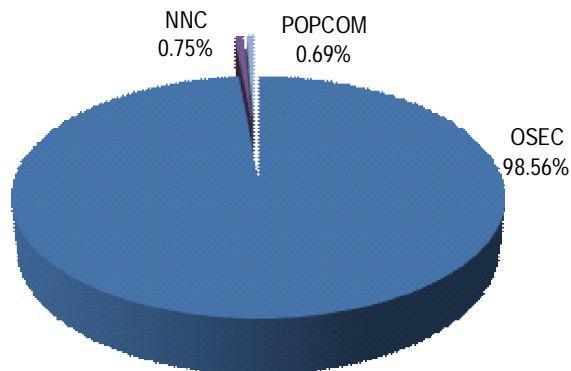
By MFO (Total Budget = P43,395,914,000)



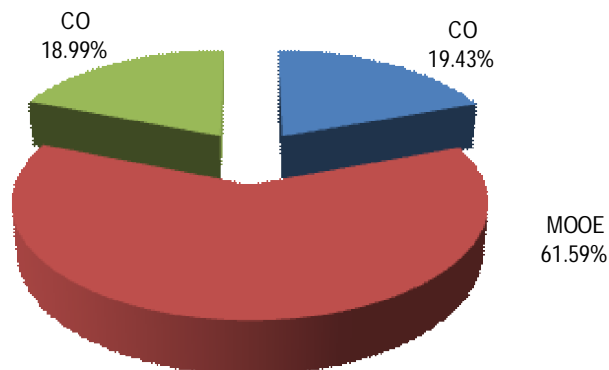
By Agency/By Expense Class
(In Thousand Pesos)

Particulars	PS	MOOE	CO	TOTAL	% Share
Department of Health (Office of the Secretary)	8,295,301	26,248,235	8,228,000	42,771,536	98.56%
National Nutrition Council (NNC)	36,884	280,289	7,750	324,923	0.75%
Commission on Population (POPCOM)	98,579	197,777	3,099	299,455	0.69%
TOTAL	8,430,764	26,726,301	8,238,849	43,395,914	100.00%
% Share	19.43%	61.59%	18.99%	100.00%	

By Agency
(Total Budget = P43,395,914,000)

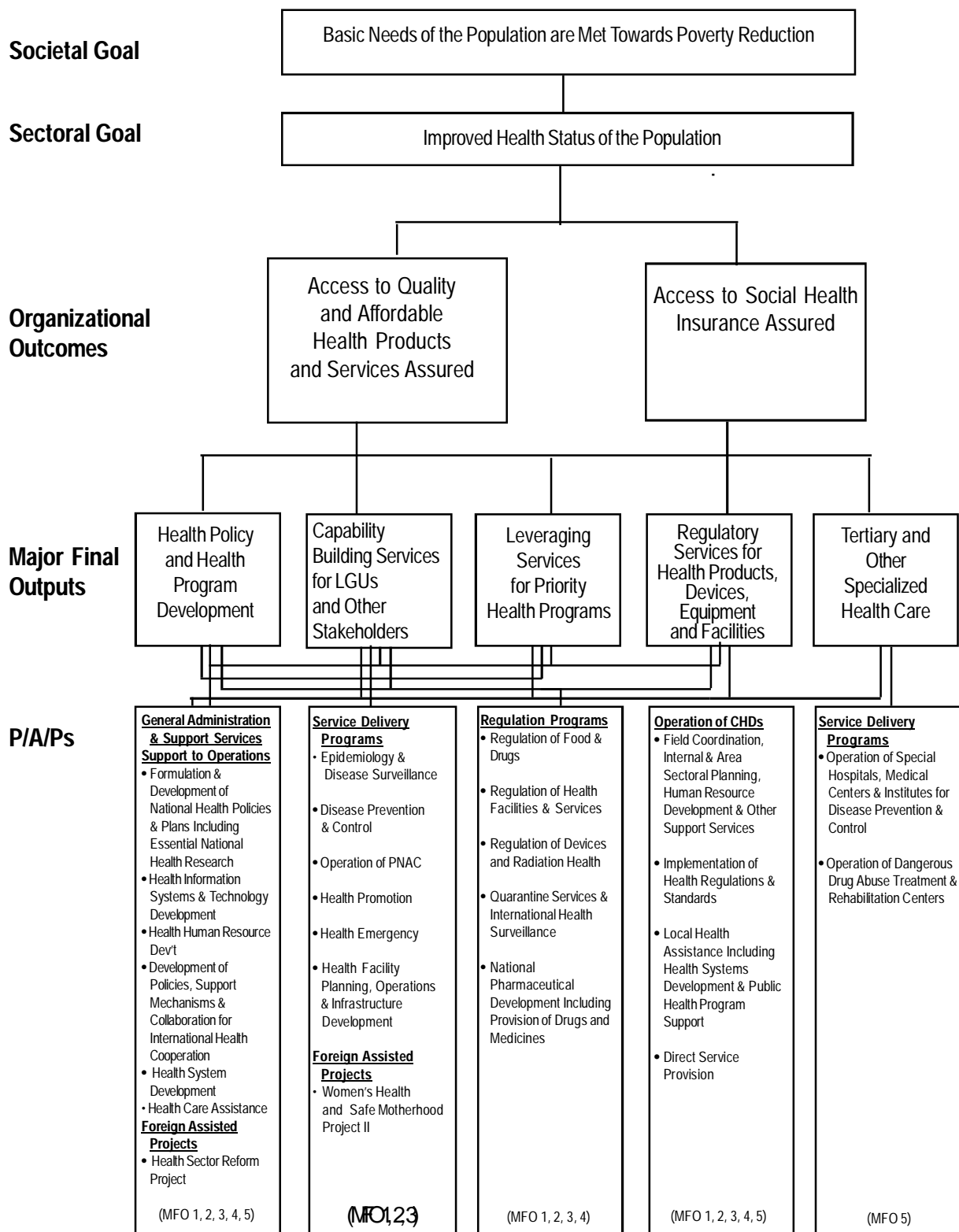


By Expense Class
(Total Budget = P43,395,914,000)



DOH-Office of the Secretary

LOGICAL FRAMEWORK (DOH-OSEC)



PERFORMANCE MEASURES AND TARGETS

(Amounts in Thousand Pesos)

Particulars	2010		2011	2012
	Target/ Amount	Actual/ Amount	Target/ Amount	Target/ Amount
MFO 1				
Health Policy and Health Program				
Development	3,786,004	2,798,748	2,917,008	3,255,648
No. of policies/standards/programs developed	747	2,018	700	1,530
No. of policies monitored	776	2,006	743	2,250
No. of management information systems developed	178	310	218	370
No. of special studies and surveys conducted	152	236	117	210
MFO 2				
Capability Building Services for LGUs and Other Stakeholders	3,697,940	2,736,506	2,816,948	3,153,957
No. of local health system models formulated	500	499	451	450
No. of advocacy activities conducted	4,500	4,386	1,681	4,400
No. of LGUs assisted to implement the systems/ models developed	1,500	5,106	2,873	5,115
No. of training courses developed and implemented	2,295	2,514	1,250	2,530
No. of men and women completing training	41,750	68,621	52,058	62,000
No. of person-days of technical assistance	96,000	257,639	148,067	250,100
MFO 3				
Leveraging Services for Priority Health Programs	7,593,746	4,069,478	13,602,430	11,525,875
Percentage budget (drugs, etc.) allocated/provided to LGUs	30%	17%	25%	27%
Percentage of procured logistics distributed within standard time	100%	100%	100%	100%
No. of outbreaks investigated within standard time	312	281	315	300
MFO 4				
Regulatory Services for Health Products, Devices, Equipment and Facilities	899,246	1,764,265	966,256	933,767
For Bureau of Food and Drugs:				
No. of backlogs processed	60,182	54,708	60,160	60,500
	processed	processed	processed	processed
No. of complaints received	194	612	130	600
	received	received	received	received

Note: Amount for FY 2012 includes the RLIP and Special Account.

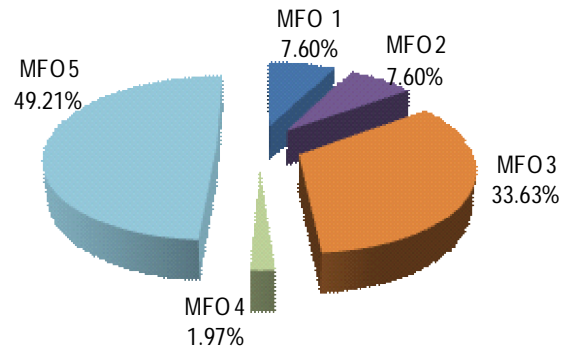
Particulars	2010		2011	2012
	Target/ Amount	Actual/ Amount	Target/ Amount	Target/ Amount
For Regulation of Health Devices & Radiation:				
No. of complaints addressed within standard time	194	612	130	600
within standard time	received	received	received	received
No. of complaints resolved	89	388	51	150
For Regulation of Health Facilities and Services:				
No. of health products/ establishments/facilities/ devices and technologies registered/ licensed/accredited	58,626	69,650	58,456	59,000
No. monitoring/inspection done (food, drug establishments, health facilities, purification devices, X-ray/radiologic facilities, vessels and aircraft)	8,617	15,360	8,130	7,700
Percentage reduction in price list of essential drugs	50%	50%	50%	50%
MFO 5				
Tertiary and other Specialized Health Care	9,261,848	13,125,402	12,419,878	23,902,289
Occupancy Rate	85%	85%	85%	85%
Percentage of hospital acquired infections (Nosocomial infection)	<2%	<2%	<2%	<2%
Net death rates (death beyond 48 hrs. after admission)	2.5%	2.5%	2.5% and below	2.5% and below
Cost/bed day				
3rd level referral hospital				
2nd level referral hospital				
1st level referral hospital				
Infirmity/primary care				
Percentage of MOOE used for drugs and supplies				
Percentage of filled and unfilled prescriptions by hospital pharmacy				
Percentage of PhilHealth enrolled members (by type) patients against admissions				
Percentage of internally generated funds for indigent patients against total budget				
Ratio of hospital income to hospital total budget				
Total	25,238,784	24,494,399	32,722,520	42,771,536

FY 2012 MFO Budget

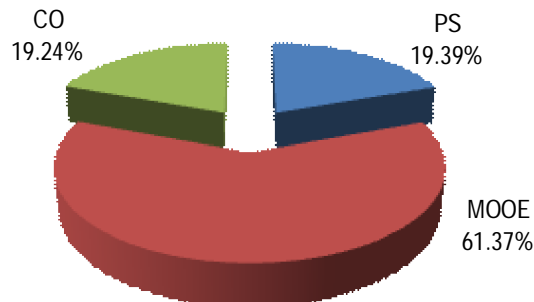
By MFO/Expense Class (In Thousand Pesos)

Particulars	PS	MOOE	CO	TOTAL	% SHARE
MFO 1					
Health policy and health program development	541,375	2,634,479	75,000	3,250,854	7.60%
MFO 2					
Capability building services for LGUs and other stakeholders	541,396	2,634,463	75,000	3,250,859	7.60%
MFO 3					
Leveraging services for priority health programs	581,114	5,723,592	8,078,000	14,382,706	33.63%
MFO 4					
Regulatory services for health products, devices, equipment and facilities	232,194	608,835	-	841,029	1.97%
MFO 5					
Tertiary and other specialized health care	6,399,222	14,646,866	-	21,046,088	49.21%
Total	8,295,301	26,248,235	8,228,000	42,771,536	100.00%
% Share	19.39%	61.37%	19.24%	100.00%	

By MFO (Total Budget = P42,771,536,000)



By Expense Class (Total Budget = P42,771,536,000)





Commission on Population

Legal Basis

- **Republic Act No. 6365** (August 16, 1971) established the National Population Program and created the Commission on Population.
- **Presidential Decree No. 79** (December 8, 1972) revised certain provisions of RA 6365, placing POPCOM under the control and supervision of the Office of the President and its purposes, objectives and functions redefined.
- **Executive Order No. 123** (January 30, 1987) reorganized the Department of Social Welfare and Development (DSWD) and made POPCOM one of its attached agencies.
- **Executive Order No. 408** (June 18, 1990) transferred POPCOM from DSWD to the Office of the President.
- **Executive Order No. 476** (August 14, 1991) attached POPCOM to the National Economic and Development Authority (NEDA) to facilitate coordination on policies and programs relative to population.
- **Executive Order No. 188** (March 24, 2003) attached POPCOM to the Department of Health (DOH).

Mandate

The Commission on Population (POPCOM) is the central policymaking, planning, coordinating, and monitoring body of the population program.

LOGICAL FRAMEWORK (POPCOM)

Societal Goal

Poverty Reduction and Improved Quality of Life

Sectoral Goals

Attain a Desired Population
Growth & Distribution

Improve Health Status

Organizational Outcome

Access to Quality Population Management
Information & Services Improved

Major Final Outputs

Population Policy and Program
Development

Capability Building Services
for LGUs
and Other Stakeholders

P/A/Ps

Coordination of the implementation
of approved national, sectoral,
regional, and local population
programs, plans, and policies

Formulation and development
of long-range and annual population
policies, programs, and plans

Provision of technical
assistance, skills enhancement
(on POPDEV data
management, M & E, advocacy
and resource mobilization), and
subsidies to LGUs and other
population partners

PERFORMANCE MEASURES AND TARGETS

(Amounts in Thousand Pesos)

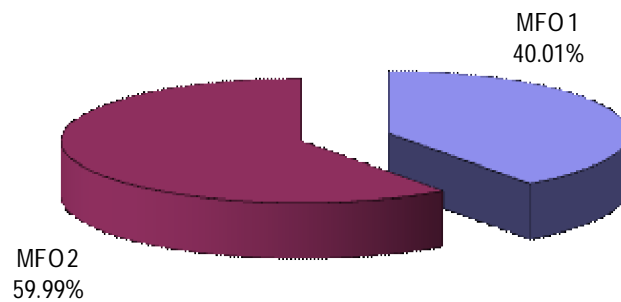
Particulars	FY 2010		FY 2011	FY 2012
	Target/	Actual/	Target/	Target/
MFO 1				
Population Policy and Program Development	164,461	81,239	178,874	119,820
No. of policies formulated in coordination with national and local bodies (e.g. RP/NFP, CSR, RH/FP, POPdev Integration)	150	158	160	286
No. of POPDEV sensitive program/agency plans and guidelines/standards developed at the national, regional and local levels	180	145	200	200
No. of advocates/advocacy networks organized and maintained	408	4,789	438	450
No. of advocacy materials produced	4,335	4,099	4,870	3,690
No. of events organized/promoted at the national and local levels	178	124	200	220
No. of population information/knowledge centers maintained/updated	74	130	75	75
No. of clients/users served	4,000	4,156	4,580	5,000
MFO 2				
Capability Building Services for LGUs and Other Stakeholders	109,641	199,276	119,250	179,635
No. of LGUs with local policies, resolutions	358	322	370	370
No. of LGUs with ordinances formulated and implemented to support POPDEV integration	183	168	200	200
No. of Technical Assistance (POPDEV, RH/NFP/RH/FP,AHYD) Training of Trainers (TOT) Training Orientations Workshops Other capability building activities Policy formulation Plan development Standard/guidelines setting Monitoring and evaluation Resource mobilization	11,300	1,723	11,400	38,455
No. of satellite information centers established/maintained	629	736	650	285
No. of clients served at the satellite centers	5,600	4,302	5,800	7,029
Satisfaction rate of clients served	100%	100%	0%	0%
TOTAL	274,102	280,515	298,124	299,455

FY 2012 MFO Budget

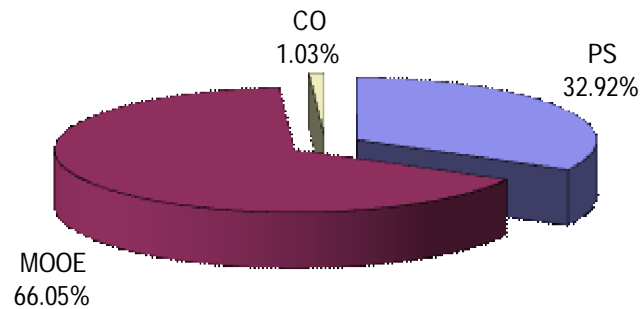
By MFO/By Expense Class (In Thousand Pesos)

Particulars	PS	MOOE	CO	TOTAL	% SHARE
MFO 1					
Population Policy and Program Development	78,863	37,858	3,099	119,820	40.01%
MFO 2					
Capability Building Services for LGUs and Other Stakeholders	19,716	159,919	-	179,635	59.99%
Total	98,579	197,777	3,099	299,455	100.00%
% Share	32.92%	66.05%	1.03%	100.00%	

By MFO (Total Budget - P299,455,000)



By Expense Class (Total Budget - P299,455,000)





National Nutrition Council

Legal Basis

- **Presidential Decree No. 491** (June 25, 1974), or the “Nutrition Act of the Philippines”, created the National Nutrition Council (NNC) under the Office of the President as the policy-making and coordinating body for nutrition.
- **Executive Order No. 234** (July 22, 1987), “Reorganization Act of the National Nutrition Council”, reaffirmed the need for an intersectoral national policy-making and coordinating body on nutrition, transferring NNC to the Department of Social Welfare and Development (DSWD).
- **Administrative Order No. 88** (August 28, 1987) transferred the NNC as an attached agency from the DSWD to the Department of Agriculture (DA), the latter having been named Chair of the NNC Governing Board.
- **Executive Order No. 472** (November 2005) named the Department of Health (DOH) as NNC Chair and transferred the NNC to DOH as an attached agency.
- **Executive Order No. 616** (April 2007) created the Anti-Hunger Task Force composed of 29 national government agencies, led by DOH through NNC, to ensure that hunger mitigation programs are in place.

Mandate

The National Nutrition Council (NNC) oversees the implementation of the hunger mitigation program. It formulates national food and nutrition policies and strategies; and coordinates planning, monitoring, and evaluation of the national nutrition program.

LOGICAL FRAMEWORK (NNC)

Societal Goal

Poverty Reduction and Improved Quality of Life

Sectoral Goal

Improved Health Status of the Population

Organizational Outcome

Nutritional Well-being of all Filipinos Assured

Major Final Outputs

Nutrition Policy
and Program Development Services

Nutrition Capability Building Services
for LGUs and Other Stakeholders

P/A/Ps

Planning and policy formulation - multi-level
program formulation

Medium-term Philippine plan of action
for nutrition

Accelerated hunger-mitigation
program

Legislative agenda on nutrition

Maintenance of nutrition management
information systems

Development, production, and distribution of
printed and audio-visual materials and other
technical materials

Conduct of and participation in training and
conferences

Nutrition program management

Training on the Barangay Nutrition
Scholar Program

Organization and conduct of special events
toward intensified nutrition advocacy

Provision of logistics support to local nutrition
programs

Barangay Nutrition Scholar Program

Provision of cash awards to LGUs with
outstanding nutrition improvement and
hunger mitigation programs

Coordination of nutrition program at regional
and local levels

PERFORMANCE MEASURES AND TARGETS
(Amounts in Thousand Pesos)

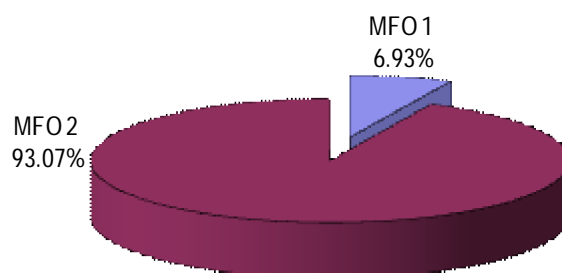
Particulars	FY 2010		FY 2011	FY 2012
	Target/ Amount	Actual/ Amount	Target/ Amount	Target/ Amount
MFO 1				
Nutrition Policy and Program Development Services	17,561	19,503	18,064	24,369
No. of policies, standards, programs developed	59	61	60	40
No. of policies, standards, programs coordinated and monitored	548	431	410	20
No. of special studies/surveys program implementation reviews conducted	83	28	51	42
No. of program management systems developed	11	3	5	8
No. of nutrition assessment, situationer/reports released/disseminated	6	5	4	4
MFO 2				
Nutrition Capability Building Services for LGUs and Other Stakeholders	453,621	463,292	292,983	300,554
No. of conferences, workshops, training with built-in evaluation mechanisms conducted	3,175	499	673	818
No. of participants oriented/trained and monitored	103,288	17,240	18,815	29,214
No. of local nutrition action plans formulated, locally budgeted/funded, implemented, monitored, and evaluated	22,429	11,504	22,429	22,429
No. of modules, manuals and syllabus developed, printed and distributed, by kind	512,931	334,915	126,271	143,128
No. of nutrition IEC materials in various titles developed, aired, printed, installed, and distributed	624,973	148,708	218,121	183,481
No. of special events coordinated/held	6	6	5	5
TOTAL	471,182	482,795	311,047	324,923

FY 2012 BUDGET

By MFO/By Expenses Class (In Thousand Pesos)

Particulars	PS	MOOE	CO	TOTAL	% Share
MFO 1					
Nutrition Policy and Program Development Services	7,746	13,681	1096	22,523	6.93%
MFO 2					
Capability Building Services to LGUs and Other Stakeholders	29,138	266,608	6,654	302,400	93.07%
TOTAL	36,884	280,289	7,750	324,923	100.00%
% Share	11.35%	86.26%	2.39%	100.00%	

By MFO (Total Budget = P324,923,000)



By Expense Class (Total Budget=P324,923,000)

