



NATIONAL WATER RESOURCES BOARD

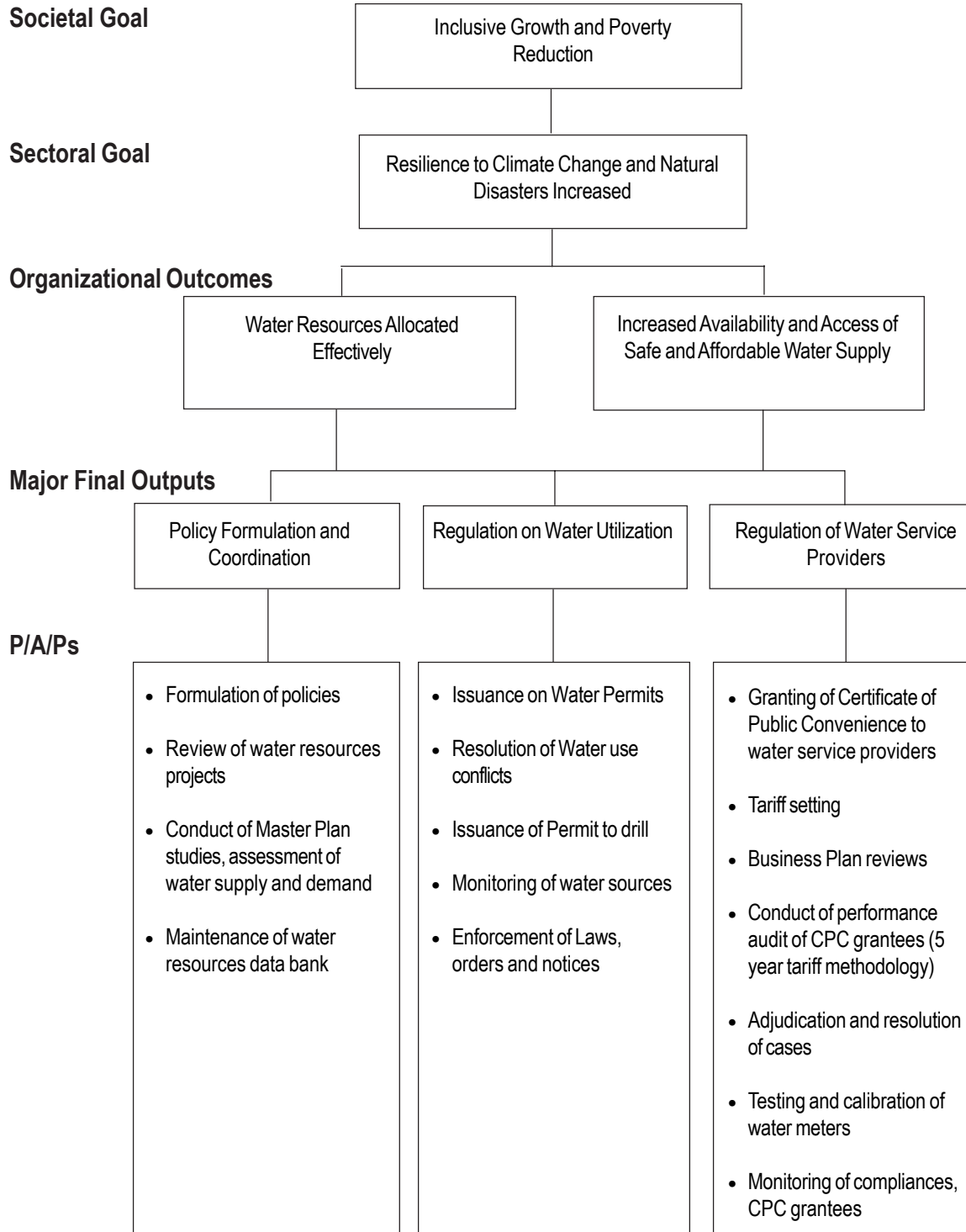
Legal Basis

- **Presidential Decree No. 424** (March 28, 1974) created the National Water Resources Council (NWRC), vesting it with powers to coordinate and integrate water resources development.
- **Presidential Decree No. 1067** (December 31, 1976) instituted the Water Code of the Philippines, providing for the utilization, exploitation, development, conservation, and protection of water resources to be subject to the control and regulation of the government through the NWRC.
- **Presidential Decree No. 1206** (October 6, 1977) abolished the Board of Power and Waterworks and transferred its powers and functions relative to power utilities to the Board of Energy and its waterworks powers and functions to the NWRC.
- **Executive Order No. 124-A** (July 22, 1987) renamed the NWRC to National Water Resources Board (NWRB), transferring its technical functions to the Bureau of Research and Standards under the Department of Public Works and Highways.
- **Executive Order No. 123** (September 12, 2002) reconstituted the membership of the NWRB, to exclude those with direct claims on water resources, and placing it under the Office of the President. It also provided for NWRB to assume the regulatory functions of the Local Water Utilities Administration (LWUA).
- **Executive Order No. 860** (February 8, 2010) redefining the composition of the Board; returning the regulation of Water Districts to LWUA; and transferring NWRB to Department of Environment and Natural Resources (DENR).

Mandate

The National Water Resources Board (NWRB) coordinates and regulates all water resources development and management of the country. It is responsible for achieving a scientific and orderly development of all water resources consistent with the principles of optimum utilization, conservation, and protection to meet present and future needs.

LOGICAL FRAMEWORK (NWRB)



PERFORMANCE MEASURES AND TARGETS

(Amounts in Thousand Pesos)

Particulars	FY 2010		FY 2011	FY 2012
	Target/ Amount	Actual/ Amount	Target/ Amount	Target/ Amount
MFO1:				
Policy Formulation and Coordination	12,435	14,618	14,916	20,001
% of policy formulated/articulated	60%	50%	60%	60%
Number of Water resources reviewed	13	5	12	12
Number of water resources assessment conducted	17	11	18	18
-Macro assessment	-	-	1	1
-Micro assessment			17	17
Groundwater management plan for water constraint cities	-	-	-	1
Number of Information Education Communication Campaign (IEC) conducted	9	9	1	3
MFO2:				
Regulation on Water Utilization	15,103	14,865	17,031	16,745
% of water permits applications approved	60%	59%	60%	60%
-Conditional water permit	500	573	550	700
-Water permits granted	150	260	240	300
Cleansing of pending water permit	-	-	1000	1000
% water use conflicts resolved over number of water use conflicts filed	60%	54%	86	86
Number of permits to drill issued	240	163	240	240
Number of water sources monitored over the target set	2,100	1,053	1,650	1,650
% of compliance over number of orders issued	60%	93%	60%	60%
MFO3:				
Regulation of Water Service Providers	10,870	15,074	15,857	17,009
% of Certificates of Public Convenience(CPC) applications decided over number of CPC applications received	60%	83%	60%	60%
No. of petition for water rates adjustment & others decided	24	50	24	24
Number of CPC validated	50	27	55	55
Number of water meters inspected/tested/sealed over number of water meters targeted	40,000	51,204	49,000	51,000
Number of water utilities inspected/ monitored over the target set	192	92	192	192
% of compliance over number of orders issued	60%	40%	60%	60%
TOTAL	38,408	44,557 *	47,804	53,755

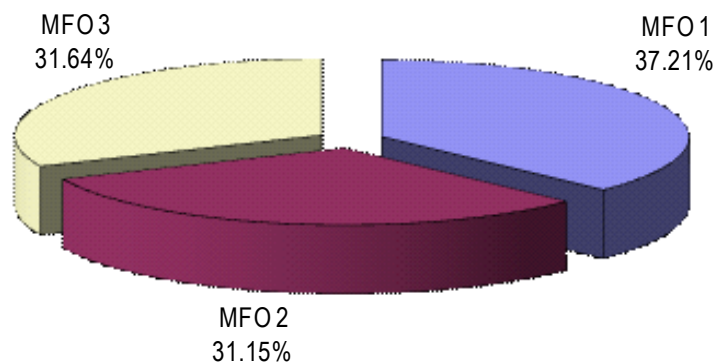
* Inclusive of fund releases from Special Purpose Funds

FY 2012 MFO BUDGET

By MFO/By Expense Class (In Thousand Pesos)

Particulars	PS	MOOE	CO	TOTAL	% SHARE
MFO 1 Policy Formulation and Coordination	11.851	8.110	0.040	20.001	37.21%
MFO 2 Regulation on Water Utilization	12.045	4.700	-	16.745	31.15%
MFO 3 Regulation of Water Service Providers	12.310	4.199	0.500	17.009	31.64%
Total	36.206	17.009	0.540	53.755	100%
% Share	67.35%	31.64%	1.00%	100%	

By MFO
(Total Budget = P53,755,000)



By Expense Class
(Total Budget = P53,755,000)

