



## Environmental Management Bureau

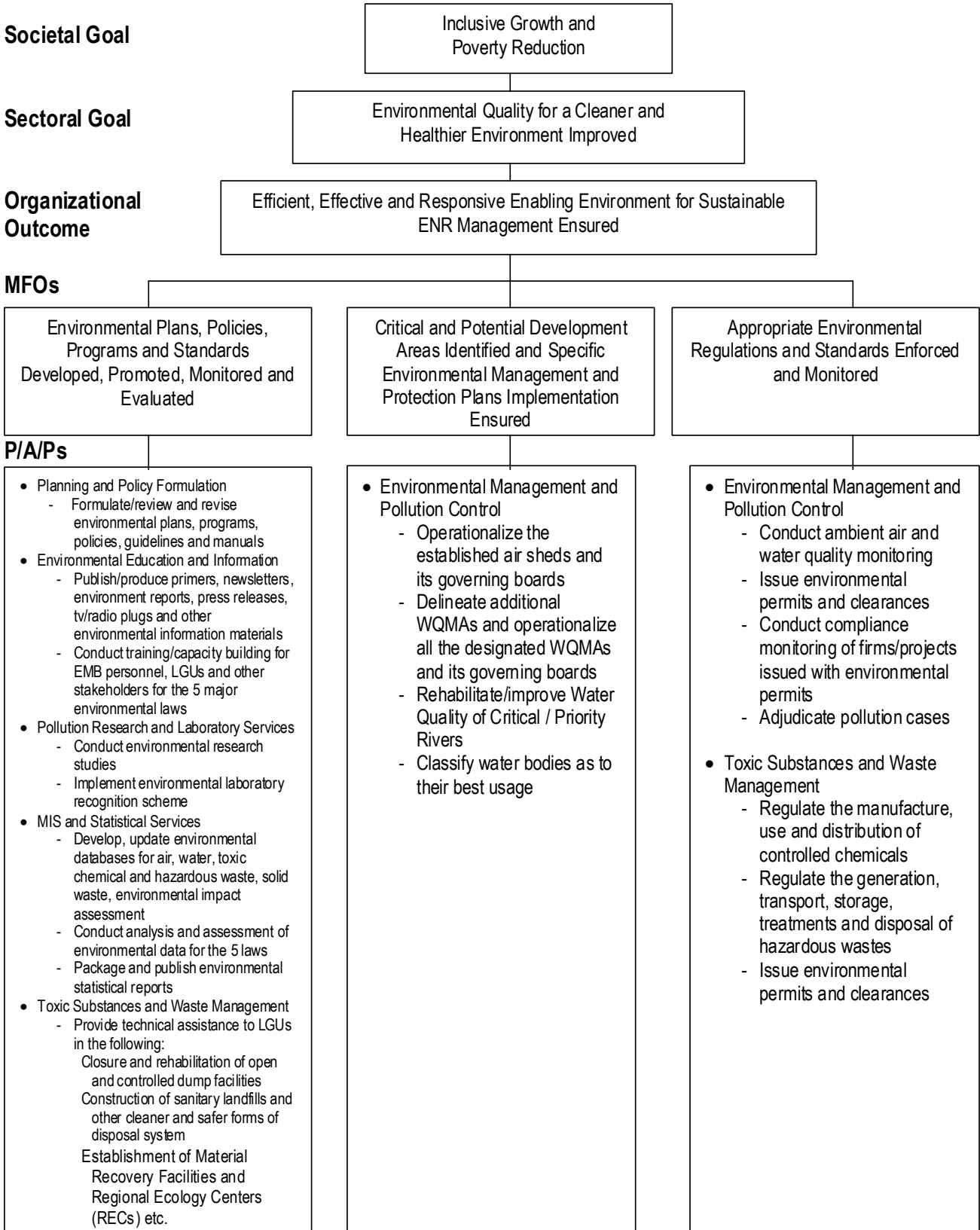
### Legal Basis

- **Executive Order No. 192** (June 10, 1987) reorganized the Department of Environment, Energy and Natural Resources (DEENR) and renamed it as the Department of Environment and Natural Resources (DENR), with the Environmental Management Bureau (EMB) created as a staff bureau under the DENR, absorbing the powers and functions of the abolished National Environmental Protection Council (NEPC), the National Pollution Control Commission (NPCC), and the Environmental Center of the Philippines (ECP).
- **Republic Act No. 8749** (June 23, 1999), otherwise known as the Philippine Clean Air Act of 1999, converted EMB from a staff to a line bureau.

### Mandate

The Environmental Management Bureau (EMB) formulates plans, programs, and appropriate environmental quality standards for the prevention and control of pollution and the protection of the environment, and ensures their implementation. As a line bureau of the DENR, it is mandated to implement five environmental laws, namely, Presidential Decree 1586 (June 11, 1978) - Establishing an Environmental Impact Assessment System; Republic Act No. 6969 (October 26, 1990) - Toxic Substances and Hazardous and Nuclear Waste Control Act of 1990; Republic Act No. 8749 (June 23, 1999) - Philippine Clean Air Act of 1999; Republic Act No. 9003 (January 26, 2001) - Ecological Solid Waste Management Act; and Republic Act No. 9275 (March 22, 2004) – Philippine Clean Water Act.

## LOGICAL FRAMEWORK (EMB)



## PERFORMANCE MEASURES AND TARGETS

(Amounts in Thousand Pesos)

Particulars	FY 2010		FY 2011	FY 2012
	Target/ Amount	Actual/ Amount	Target/ Amount	Target/ Amount
<b>MFO 1</b>				
<b>Environmental Plans, Policies, Programs and Standards Developed, Promoted, Monitored and Evaluated</b>	<b>143,867</b>	<b>76,136</b>	<b>100,342</b>	<b>148,374</b>
<ul style="list-style-type: none"> <li>● ENR and sub-sector plans, regulatory framework prepared, issued and disseminated</li> <li>● Plans, guidelines/ manuals formulated/ reviewed/updated</li> </ul>	10 plans & 15 guidelines/ manuals	10 plans & 15 guidelines/ manuals	23 plans/ policies/ guidelines/ manuals	23 plans/ policies/ guidelines/ manuals
<ul style="list-style-type: none"> <li>● ENR -related database, information, statistics generated, updated and made available</li> <li>● Analysis and Assessment of environmental data for air, water, toxic chemicals and hazardous waste, solid waste and environment impact</li> <li>-No. of Statistical/ Assessment Report updated/ prepared</li> <li>-No. of Database/ information updated</li> </ul>	1/1 report updated/ prepared 19 online databases	19 online databases	1/1 report updated/ prepared 19 online databases	1/1 report updated/ prepared 19 online databases
<ul style="list-style-type: none"> <li>● IEC activities enhancing the general public's awareness and appreciation of environmental issues delivered</li> <li>● Conduct of environmental education and information</li> <li>-Primers/ information materials produced and disseminated</li> </ul>	7,893 sets	8,682 sets	8,682 sets	8,682 sets
<ul style="list-style-type: none"> <li>● Capacity building and technical assistance of ENR services provided to partners and stakeholders;</li> <li>● Training/capacity building of LGUs, stakeholders on environmental laws</li> <li>-Capacity building/training provided</li> </ul>	88 training sessions	102 training sessions	159 training sessions	159 training sessions
<ul style="list-style-type: none"> <li>● Provision of technical assistance on environmental protection measures</li> <li>- No. of LGUs assisted: categorized Sanitary Landfill for residual wastes/ availing and using alternative technologies/ establishment and operations of Material Recovery Facilities /LGU-wide ESWM implementation</li> </ul>	534 LGUs	600 LGUs	600 LGUs	600 LGUs
<ul style="list-style-type: none"> <li>- No. of Ecology Centers operationalized</li> </ul>	1 NEC; 16 RECs	1 NEC; 16 RECs	1 NEC; 16 RECs	1 NEC; 16 RECs

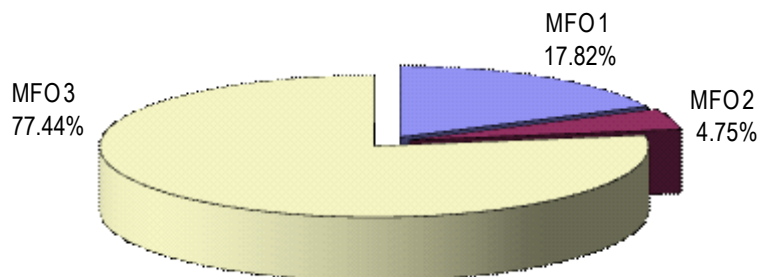
Particulars	FY 2010		FY 2011	FY 2012
	Target/ Amount	Actual/ Amount	Target/ Amount	Target/ Amount
<b>MFO 2</b>				
<b>Critical and Potential Development Areas Identified and Specific Environmental Management and Protected Plans Implementation Ensured</b>	<b>119,253</b>	<b>36,729</b>	<b>39,970</b>	<b>39,520</b>
Critical ecosystems identified/monitored and technical assistance on environmental protection measures coordinated/provided to partners/stakeholders				
Airsheds operationalized	18 airsheds and its GB	18 airsheds and its GB	18 airsheds and its GB	18 airsheds and its GB
Water Quality Management Areas identified	13 areas	12 WQMA identified; 5 WQMA operationalized	12 WQMA identified; 5 WQMA operationalized	12 WQMA identified; 5 WQMA operationalized
Waterbodies classified	25 waterbodies	31 waterbodies	25 waterbodies	25 waterbodies
<b>MFO 3</b>				
<b>Appropriate Environmental Regulations and Standards Enforced and Monitored</b>	<b>544,694</b>	<b>509,105</b>	<b>691,346</b>	<b>644,785</b>
Monitoring measures/mechanisms implemented/implementation arrangements established and operationalized				
Ambient Air Quality Monitoring	43 sampling stations	43 sampling stations	43 sampling stations	43 sampling stations
Ambient Water Quality Monitoring	110 waterbodies	110 waterbodies	110 waterbodies	110 waterbodies
Beachwatch Program	72 beaches	72 beaches	72 beaches	101 beaches
Industrial Ecowatch Program	183 firms	203 firms	206 firms	206 firms
<b>Regulatory Services</b>				
Permits/clearances per various environmental laws issued	18,419 permits/clearances	25,165 permits/clearances	27,756 permits/clearances	27,756 permits/clearances
Projects/firms issued permits/clearances monitored	22,509 firms	22,383 firms	22,753 firms	22,753 firms
Projects/firms operating without permits/clearances surveyed	3,292 firms	3,292 firms	3,319 firms	3,319 firms
<b>TOTAL</b>	<b>807,814</b>	<b>621,970</b>	<b>831,658</b>	<b>832,679</b>

## FY 2012 MFO BUDGET

### By MFO/By Expense Class (In Thousand Pesos)

Particulars	PS	MOOE	CO	TOTAL	% SHARE
<b>MFO 1</b> Environmental Plans, Policies, Programs and Standards Developed, Promoted, Monitored	17,324	131,050	-	148,374	17.82%
<b>MFO 2</b> Critical and Potential Development Areas Identified and Specific Environmental Management and Protection Plans Implementation Ensured	19,789	19,731	-	39,520	4.75%
<b>MFO 3</b> Appropriate Environmental Regulations and Standards Enforced and Monitored	198,973	207,541	238,271	644,785	77.44%
<b>Total</b>	<b>236,086</b>	<b>358,322</b>	<b>238,271</b>	<b>832,679</b>	<b>100.00%</b>
<b>% Share</b>	<b>28.35%</b>	<b>43.03%</b>	<b>28.61%</b>	<b>100.00%</b>	

**By MFO**  
(Total Budget = P832,679,000)



**By Expense Class**  
(Total Budget = P832,679,000)

