



## DEPARTMENT OF ENVIRONMENT AND NATURAL RESOURCES

### Legal Basis

- **Presidential Decree No. 461** (May 17, 1974) reorganized the Department of Agriculture and Natural Resources (DANR) into the Department of Agriculture (DA) and the Department of Natural Resources (DNR) and provided for the functional and structural configuration of the two Departments.
- **Executive Order No. 131** (January 30, 1987) created the Department of Environment, Energy and Natural Resources (DEENR).
- **Executive Order No. 192** (June 10, 1987) reorganized the DEENR and renamed it as the Department of Environment and Natural Resources (DENR), establishing thereby DENR'S mandate and defining the structure and functions/concerns of its various offices, staff bureaus, attached agencies, and field offices consisting of Regional, Provincial, and Community Offices.

### Mandate

The Department of Environment and Natural Resources (DENR) is responsible for the conservation, management, and development of the country's environment and natural resources. It ensures the proper use of these resources and the protection of the environment within the framework of sustainable development.

## LOGICAL FRAMEWORK (DENR)

### Societal Goal

Inclusive Growth and Poverty Reduction

### Sectoral Goal

Natural Resources Conserved, Protected and Rehabilitated

### Organizational Outcome

Efficient, Effective and Responsive Enabling Environment for Sustainable ENR Management Ensured

### Major Final Outputs

Plans, Policies, and Standards Developed, Promoted, Monitored and Evaluated

Ecosystems and Natural Resources Managed, Protected, Conserved, and Enhanced and Degraded Ones Rehabilitated

Appropriate Regulations and Standards Enforced and Monitored

### P/A/Ps

- Formulate and update ENR plan and regulatory framework as well as corresponding sectoral plans and investment programs
- Formulate pertinent policies, and policy instruments based on results of policy studies/researches and policy impact evaluation
- Generate new and update current database, maps, charts, geographic information and other pertinent information/statistics for improved planning, policy formulation and decision making
- Implement focused/dedicated advocacy program for critical bills and contentious issues
- Develop and maintain a secure, credible land/natural resources information/records and mapping system
- Develop and implement pertinent programs for capacity building of major stakeholders
- Participate in national/international/global fora on environmental and natural resources concerns for technical knowledge, upgrading, sharing and commitment
- Conduct/implement researches on ENR management

- Conduct community organizing and pertinent extension services to local communities and other eligible stakeholders
- Prepare/draft/issue appropriate SRM instruments
- Implement approved site-specific plans/measures with LGUs and other stakeholders
- Monitor and evaluate performance relative to site-specific management plan and feedback to concerned offices (participatory monitoring and evaluation)

- Identify, organize, develop and operationalize networks of individuals, organizations/task forces/committees as partners in compliance monitoring
- Conduct training for deputized individuals/organizations/task forces/committees
- Monitor/assess and feedback result to appropriate offices/officers
- Maintain operations of quasi-judicial and other ad hoc investigative bodies for resolution of ENR conflicts/cases
- Collect revenues from permits/licenses/leases/agreements and other sources

## PERFORMANCE MEASURES AND TARGETS

(Amount in Thousand Pesos)

Particulars	FY 2010		FY 2011	FY 2012
	Target/ Amount	Target/ Amount	Target/ Amount	Target/ Amount
<b>MFO 1</b>				
<b>Plans, policies and standards developed, promoted, monitored and evaluated</b>	<b>3,448,087</b>	<b>3,207,756</b>	<b>3,549,671</b>	<b>6,139,017</b>
ENR and sub-sector plans, regulatory framework, policies/policy instruments prepared, updated, approved/issued				
Integrated Watershed Management Plan prepared (no.)	14	13	18	13
Ecotourism Business/Development Plan prepared (no.)	8	8	5	24
PA management plan prepared (no.)			2	24
Cave management plan (no)				75
ENR RDE Framework Adopted (no.)			1	
MTPDP/MTPIP/Annual plans (no.)	2	2		
Policies and Guidelines (no.)	20	20		15
Framework plan prepared (no.)				23
ENR-related database, maps, charts, geographic information, statistics, technologies and other information for policy planning, legislation, and extension services regularly generated, updated and reproduced/made accessible to concerned stakeholders and the public				
DENR Information Systems Strategic Plan database developed and maintained (no.)	51	-	1	1
Watershed areas characterized (no.)	21	21	14	20
Forestland boundaries delineated (km.)	12,485	13,058	8,267	
Forestland boundaries assessed (km.)	12,539	12,213	35,405	
Cadastral Survey -				
municipality surveyed (no.)				299
equivalent area surveyed (has)				5,204,071
- Category A - Full cadastre (has)	99,514	68,290	32,793	
- Category B - Proj. control estab. (no.)	6,592	3,184	3,711	
- Political boundary estab.(no.)	11,402	7,994	4,200	
- Category C - Lotsurveyed (no.)	5,899	5,899	66,759	
Others (Inspection, Verification and Approval of Surveys)				
Control points established (no.)	7,352	6,987	8,136	10,257
Recovery of ground control points (no.)	4,956	3,922	4,144	1,060
Lots verified and approved (no.)	49,149	164,978	59,633	129,706
Protected areas demarcated ( km)	14	14	73	
Protected areas zoned/delineated (km)	256	256	222	
Caves assessed/classified (no.)	29	38	50	75
Watershed assessed for vulnerability (no.)	15	15	7	8
Research studies/banner projects implemented (no.) includes climate change adaptation, mitigation, disaster risk reduction, vulnerability and capacity assessment			176	133

Particulars	FY 2010		FY 2011	FY 2012
	Target/ Amount	Target/ Amount	Target/ Amount	Target/ Amount
Coherent countrywide IEC activities enhancing general public's awareness and appreciation of environmental issues delivered Technical/popular materials produced and disseminated (no.) Advocacy, awareness campaign on ENR programs/act. Radio, TV guestings coordinated/attended	35,906	49,993	88,229	40,956
Capacity building and technical assistance on ENR services provided to other government agencies, LGUs, civil society, IPs, private sector and other concerned stakeholders, on a regular basis Trainings provided (no.) Technical assistance on development of ICM plan (no.) Technical assistance on the establishment of marine sanctuary (no.) Technical assistance provided FMS Coastal (no.)	230	429	175 16 31 -	597 18 17 342
Policy, and plan outcomes and impact monitored and evaluated on a regular basis ENR, policies, plans and programs/projects monitored (no.)				1,187
<b>MFO 2</b> <b>Ecosystems and natural resources managed, protected, conserved, and enhanced and degraded ones rehabilitated</b>	<b>3,726,050</b>	<b>6,107,448</b>	<b>4,826,049</b>	<b>7,423,310</b>
Degraded ecosystems forested/ rehabilitated/ restored/developed by government or through partnerships/coordination with LGUs, industries and the stakeholders National Greening Program Seedling production (no.) equivalent area (has) Reforestation Agroforestry Assisted Natural Regeneration Mangrove Urban forestry Watershed Protected Areas Rehabilitated Mangrove area maintained/protected (has) Nursery establishment (no.) - Mangrove Seedlings production (no.) - Mangrove Site Preparation (social mobilization) Survey and Mapping (has) Area maintained and protected (has) Clonal nurseries established/maintained (no.) Convergence area developed (has)		16,196,000 32,391 9,707 17,545 2,752 1,945 366 76 132,979 92 167,427	50,000,000 100,000 100,000 33,530 20 14,800	77,637,500 150,000 214,775 214,775 114,294 20 20

Particulars	FY 2010		FY 2011	FY 2012
	Target/ Amount	Target/ Amount	Target/ Amount	Target/ Amount
River Basin restored/rehabilitated streambank using bio-engineering technologies (no. of RB)				5
Riverbank stabilization (km)				14,663
Vegetative measures introduced (sq. m.)				806
Area Rehab - River Basin (no.)				5,180
Ecological functions of protected areas, airsheds significant caves and other critical habitats/ ecosystems maintained				
Wetlands monitored for avian flu (no.)	40	39	8	202
Ecotourism site assessed	10	10	9	30
Protected areas managed/patrolled (no. of Protected Areas)	1,665	165	152	140
National Wildlife Research Center established (no.)	1	1	1	1
Areas and resources placed under sustainable resource management (to local communities and other eligible stakeholders) increasing at an accelerated rate				
Tenurial instrument issued				
Applications processed (no.)	875	1,507	1,128	526
Permits issued (no.)	875	1,505	437	1,175
Forestry tenurial instruments holders monitored, assessed and reviewed (no.)	1,943	2,301	5,961	5,637
Contracts/permits processed (no.)				
- foreshore areas	697	633	592	997
Land Patents issued (no.) - Regular (has)	3,384	3,756	1,966	3,136
Land Patents issued (no.) - CARP (has)	111,405	101,936		113,626
Residential Free Patent (RA10023)	95,300	91,602	110,032	100,000
Sites identified with draft proclamation submitted to LMB:				
- school sites (no.)	1,117	911	10	117
- housing sites (no.)	37	36	4	10
<b>MFO 3</b>				
<b>Monitoring regulations and standards enforced and monitored</b>	<b>889,651</b>	<b>354,393</b>	<b>971,870</b>	<b>1,305,940</b>
Monitoring measures/ mechanisms/implementation arrangements established and operationalized				
Multisectoral Forest Protection Committee strengthened (no.)	207	210		121
Protected Areas Management Board operationalized (no.)	180	178	178	178
Wildlife Enforcement Office mobilized/Regional Wildlife Monitoring Committee operationalized (no.)	104	103		16

Particulars	FY 2010		FY 2011	FY 2012
	Target/ Amount	Target/ Amount	Target/ Amount	Target/ Amount
Compliance strictly monitored/reported and enforced with support from pertinent law officers				
Operations against illegal ENR activities				
Special Task Force on Law Enforcement (ENR laws)				
Untenured Forest Areas				
Patrolled/protected (has)			5,655,132	5,655,132
Bantay Gubat Program				
Bantay Gubat Volunteers hired (no.)			784	3,113
ENR Extension Officers hired (no.)				600
Anti-Illegal Task Force created				30
Confiscation (illegal logs) bd. ft.		6,908,606.84		5
- cu.m		16,293.88		
Conflicts/cases resolved/ addressed and acted upon expeditiously				
Investigations conducted (no.)	357	631	707	418
Court hearings attended and appearances made (no.)	1,026	1,186	1,017	
ENR-related cases resolved (no.)	349	480	1,445	1,083
ENR-cases reviewed/evaluated (no.)	4,241	4,546	4,300	4,200
Legal assistance provided (no.)	657	1,614	1,614	472
<b>TOTAL</b>	<b>8,063,788</b>	<b>9,669,597</b>	<b>9,347,590</b>	<b>14,868,267</b>

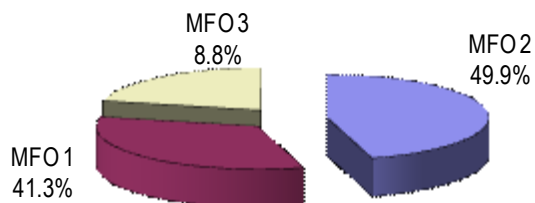
Note: \* Inclusive of fund release from Special Purpose Funds

## FY 2012 MFO BUDGET

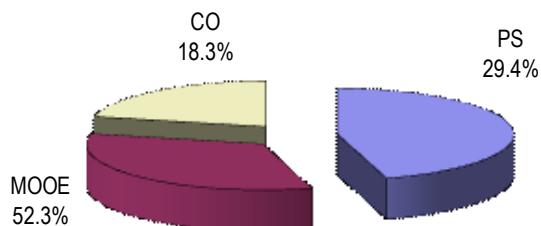
### By MFO/By Expense Class (In Thousand Pesos)

Particulars	PS	MOOE	CO	TOTAL	% SHARE
<b>MFO 1</b> Plans policies and standards developed, promoted, monitored and evaluated	1,055,431	4,555,718	527,868	6,139,017	41.3%
<b>MFO 2</b> Ecosystems and Natural Resources managed, protected, conserved and enhanced and degraded ones rehabilitated	2,657,390	2,642,354	2,123,566	7,423,310	49.9%
<b>MFO 3</b> Appropriate Regulations and Standards enforced and monitored	652,098	577,496	76,346	1,305,940	8.8%
<b>TOTAL</b>	<b>4,364,919</b>	<b>7,775,568</b>	<b>2,727,780</b>	<b>14,868,267</b>	<b>100.0%</b>
<b>% Share to total</b>	<b>29.4%</b>	<b>52.3%</b>	<b>18.3%</b>	<b>100.0%</b>	

### By MFO (Total Budget = P 14,868,267,000)



### By Expense Class (Total Budget = P14,868,267,000)

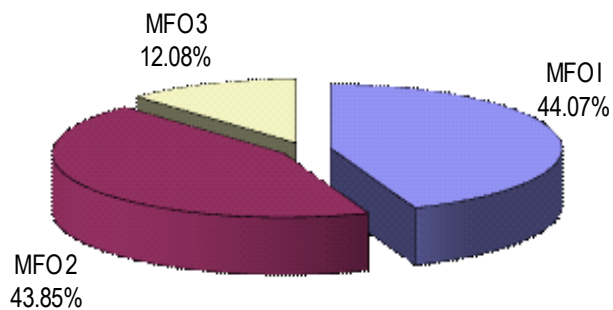


## FY 2012 MFO BUDGET

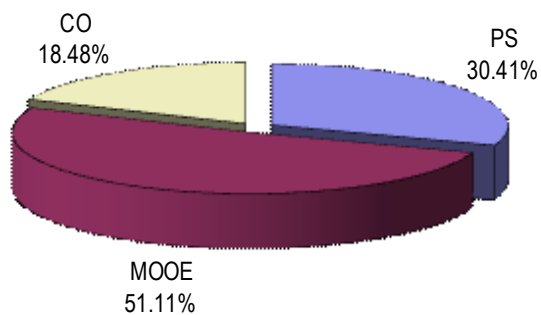
### By Agency/Expense Class (In Thousand Pesos)

Particulars	PS	MOOE	CO	TOTAL	% SHARE
OSEC	4,364,919	7,775,568	2,727,780	14,868,267	85.06%
EMB	236,086	358,322	238,271	832,679	4.76%
MGB	384,911	245,183	112,400	742,494	4.25%
NAMRIA	263,071	511,940	151,262	926,273	5.30%
NWRB	36,206	17,009	540	53,755	0.31%
PCSDS	29,738	25,966	348	56,052	0.32%
<b>Total</b>	<b>5,314,931</b>	<b>8,933,988</b>	<b>3,230,601</b>	<b>17,479,520</b>	<b>100.00%</b>
<b>% Share</b>	<b>30.41%</b>	<b>51.11%</b>	<b>18.48%</b>	<b>100.00%</b>	

### By Agency (Total Budget = P17,479,520,000)



### By Expense Class (Total Budget = P17,479,520,000)



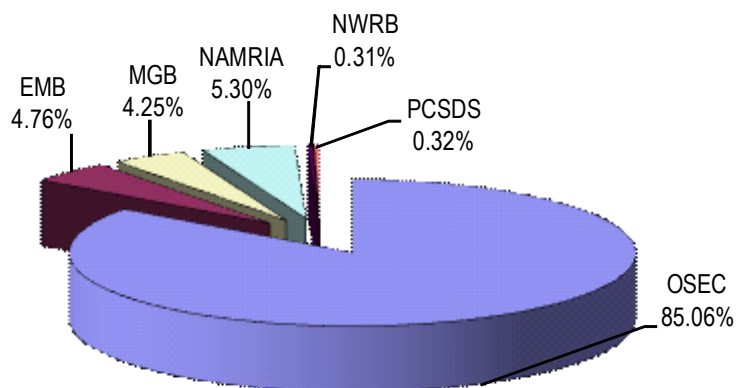


## FY 2012 MFO BUDGET

### By Agency/By MFO (In Thousand Pesos)

Particulars	MFO 1 Plans, policies and standards developed, promoted, monitored and evaluated	MFO 2 Eco-systems and natural resources managed, protected, conserved, and enhanced, and degraded ones rehabilitated	MFO 3 Appropriate regulations and standards enforced and monitored	TOTAL	% Share
OSEC	6,139,017	7,423,310	1,305,940	14,868,267	85.06%
EMB	148,374	39,520	644,785	832,679	4.76%
MGB	448,465	171,198	122,831	742,494	4.25%
NAMRIA	926,273	-	-	926,273	5.30%
NWRB	20,001	16,745	17,009	53,755	0.31%
PCSDS	29,239	4,319	22,494	56,052	0.32%
<b>TOTAL</b>	<b>7,711,369</b>	<b>7,655,092</b>	<b>2,113,059</b>	<b>17,479,520</b>	<b>100.00%</b>
<b>% Share</b>	<b>44.12%</b>	<b>43.79%</b>	<b>12.09%</b>	<b>100.00%</b>	

### By Agency (Total Budget = P17,479,520,000)





## Environmental Management Bureau

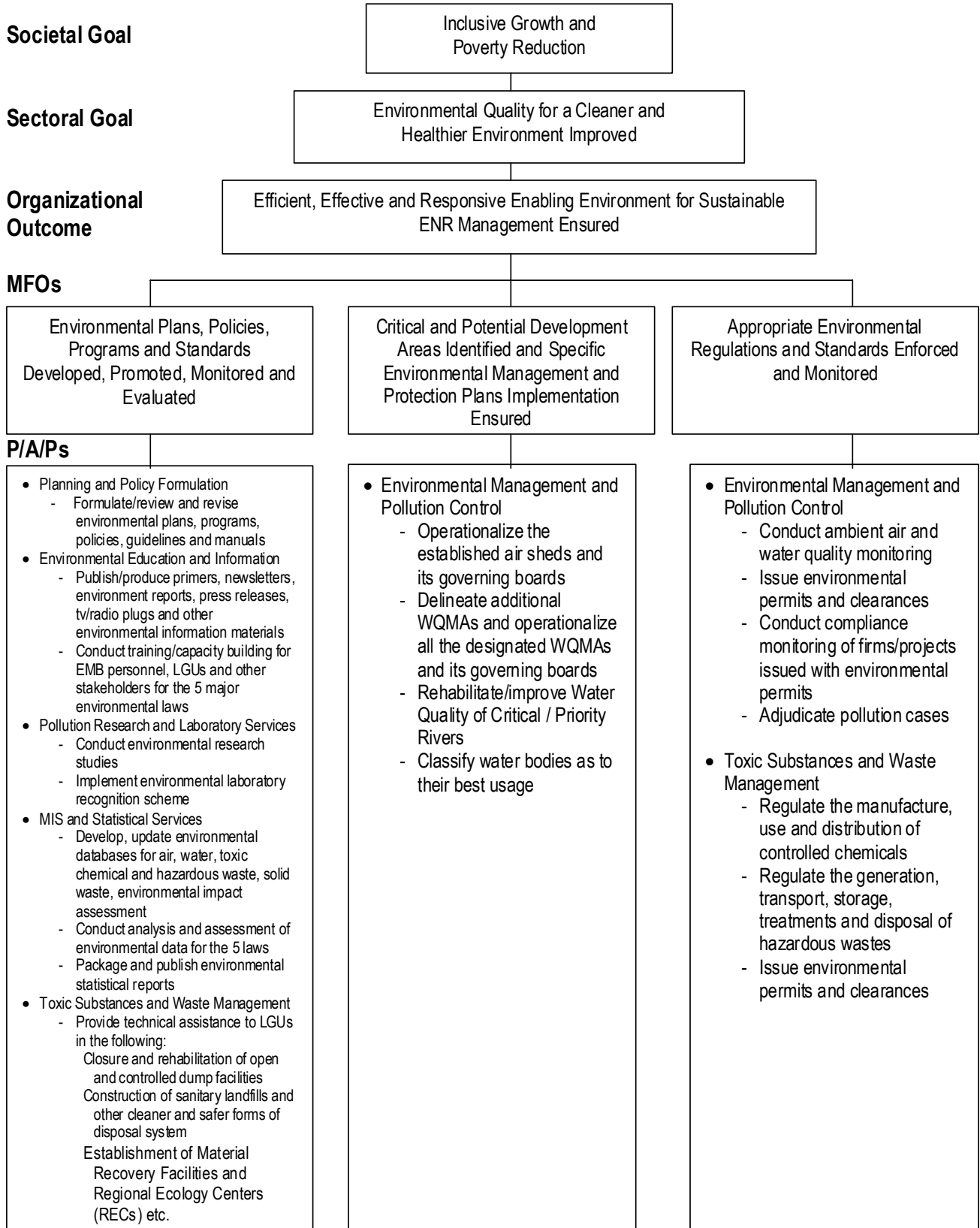
### Legal Basis

- **Executive Order No. 192** (June 10, 1987) reorganized the Department of Environment, Energy and Natural Resources (DEENR) and renamed it as the Department of Environment and Natural Resources (DENR), with the Environmental Management Bureau (EMB) created as a staff bureau under the DENR, absorbing the powers and functions of the abolished National Environmental Protection Council (NEPC), the National Pollution Control Commission (NPCC), and the Environmental Center of the Philippines (ECP).
- **Republic Act No. 8749** (June 23, 1999), otherwise known as the Philippine Clean Air Act of 1999, converted EMB from a staff to a line bureau.

### Mandate

The Environmental Management Bureau (EMB) formulates plans, programs, and appropriate environmental quality standards for the prevention and control of pollution and the protection of the environment, and ensures their implementation. As a line bureau of the DENR, it is mandated to implement five environmental laws, namely, Presidential Decree 1586 (June 11, 1978) - Establishing an Environmental Impact Assessment System; Republic Act No. 6969 (October 26, 1990) - Toxic Substances and Hazardous and Nuclear Waste Control Act of 1990; Republic Act No. 8749 (June 23, 1999) - Philippine Clean Air Act of 1999; Republic Act No. 9003 (January 26, 2001) - Ecological Solid Waste Management Act; and Republic Act No. 9275 (March 22, 2004) – Philippine Clean Water Act.

# LOGICAL FRAMEWORK (EMB)



## PERFORMANCE MEASURES AND TARGETS

(Amounts in Thousand Pesos)

Particulars	FY 2010		FY 2011	FY 2012
	Target/ Amount	Actual/ Amount	Target/ Amount	Target/ Amount
<b>MFO 1</b>				
<b>Environmental Plans, Policies, Programs and Standards Developed, Promoted, Monitored and Evaluated</b>	<b>143,867</b>	<b>76,136</b>	<b>100,342</b>	<b>148,374</b>
<ul style="list-style-type: none"> <li>● ENR and sub-sector plans, regulatory framework prepared, issued and disseminated</li> <li>● Plans, guidelines/ manuals formulated/ reviewed/updated</li> </ul>	10 plans & 15 guidelines/ manuals	10 plans & 15 guidelines/ manuals	23 plans/ policies/ guidelines/ manuals	23 plans/ policies/ guidelines/ manuals
<ul style="list-style-type: none"> <li>● ENR -related database, information, statistics generated, updated and made available</li> <li>● Analysis and Assessment of environmental data for air, water, toxic chemicals and hazardous waste, solid waste and environment impact</li> <li>-No. of Statistical/ Assessment Report updated/ prepared</li> <li>-No. of Database/ information updated</li> </ul>	1/1 report updated/ prepared 19 online databases	19 online databases	1/1 report updated/ prepared 19 online databases	1/1 report updated/ prepared 19 online databases
<ul style="list-style-type: none"> <li>● IEC activities enhancing the general public's awareness and appreciation of environmental issues delivered</li> <li>● Conduct of environmental education and information</li> <li>-Primers/ information materials produced and disseminated</li> </ul>	7,893 sets	8,682 sets	8,682 sets	8,682 sets
<ul style="list-style-type: none"> <li>● Capacity building and technical assistance of ENR services provided to partners and stakeholders;</li> <li>● Training/capacity building of LGUs, stakeholders on environmental laws</li> <li>-Capacity building/training provided</li> </ul>	88 training sessions	102 training sessions	159 training sessions	159 training sessions
<ul style="list-style-type: none"> <li>● Provision of technical assistance on environmental protection measures</li> <li>- No. of LGUs assisted: categorized Sanitary Landfill for residual wastes/ availing and using alternative technologies/ establishment and operations of Material Recovery Facilities /LGU-wide ESWM implementation</li> </ul>	534 LGUs	600 LGUs	600 LGUs	600 LGUs
<ul style="list-style-type: none"> <li>- No. of Ecology Centers operationalized</li> </ul>	1 NEC; 16 RECs	1 NEC; 16 RECs	1 NEC; 16 RECs	1 NEC; 16 RECs

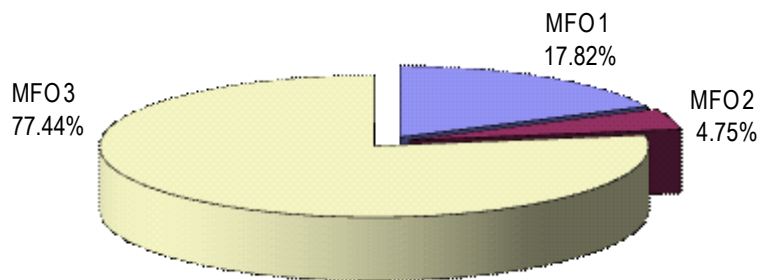
Particulars	FY 2010		FY 2011	FY 2012
	Target/ Amount	Actual/ Amount	Target/ Amount	Target/ Amount
<b>MFO 2</b>				
<b>Critical and Potential Development Areas Identified and Specific Environmental Management and Protected Plans Implementation Ensured</b>	<b>119,253</b>	<b>36,729</b>	<b>39,970</b>	<b>39,520</b>
Critical ecosystems identified/monitored and technical assistance on environmental protection measures coordinated/provided to partners/stakeholders				
Airsheds operationalized	18 airsheds and its GB	18 airsheds and its GB	18 airsheds and its GB	18 airsheds and its GB
Water Quality Management Areas identified	13 areas	12 WQMA identified; 5 WQMA operationalized	12 WQMA identified; 5 WQMA operationalized	12 WQMA identified; 5 WQMA operationalized
Waterbodies classified	25 waterbodies	31 waterbodies	25 waterbodies	25 waterbodies
<b>MFO 3</b>				
<b>Appropriate Environmental Regulations and Standards Enforced and Monitored</b>	<b>544,694</b>	<b>509,105</b>	<b>691,346</b>	<b>644,785</b>
Monitoring measures/mechanisms implemented/implementation arrangements established and operationalized				
Ambient Air Quality Monitoring	43 sampling stations	43 sampling stations	43 sampling stations	43 sampling stations
Ambient Water Quality Monitoring	110 waterbodies	110 waterbodies	110 waterbodies	110 waterbodies
Beachwatch Program	72 beaches	72 beaches	72 beaches	101 beaches
Industrial Ecowatch Program	183 firms	203 firms	206 firms	206 firms
<b>Regulatory Services</b>				
Permits/clearances per various environmental laws issued	18,419 permits/clearances	25,165 permits/clearances	27,756 permits/clearances	27,756 permits/clearances
Projects/firms issued permits/clearances monitored	22,509 firms	22,383 firms	22,753 firms	22,753 firms
Projects/firms operating without permits/clearances surveyed	3,292 firms	3,292 firms	3,319 firms	3,319 firms
<b>TOTAL</b>	<b>807,814</b>	<b>621,970</b>	<b>831,658</b>	<b>832,679</b>

## FY 2012 MFO BUDGET

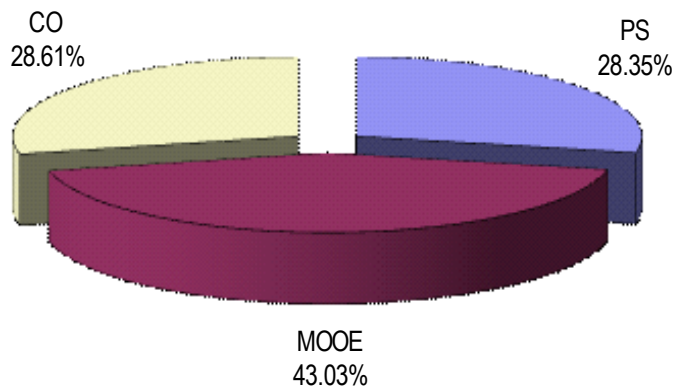
### By MFO/By Expense Class (In Thousand Pesos)

Particulars	PS	MOOE	CO	TOTAL	% SHARE
<b>MFO 1</b> Environmental Plans, Policies, Programs and Standards Developed, Promoted, Monitored	17,324	131,050	-	148,374	17.82%
<b>MFO 2</b> Critical and Potential Development Areas Identified and Specific Environmental Management and Protection Plans Implementation Ensured	19,789	19,731	-	39,520	4.75%
<b>MFO 3</b> Appropriate Environmental Regulations and Standards Enforced and Monitored	198,973	207,541	238,271	644,785	77.44%
<b>Total</b>	<b>236,086</b>	<b>358,322</b>	<b>238,271</b>	<b>832,679</b>	<b>100.00%</b>
<b>% Share</b>	<b>28.35%</b>	<b>43.03%</b>	<b>28.61%</b>	<b>100.00%</b>	

**By MFO**  
(Total Budget = P832,679,000)



**By Expense Class**  
(Total Budget = P832,679,000)





## Mines and Geo-sciences Bureau

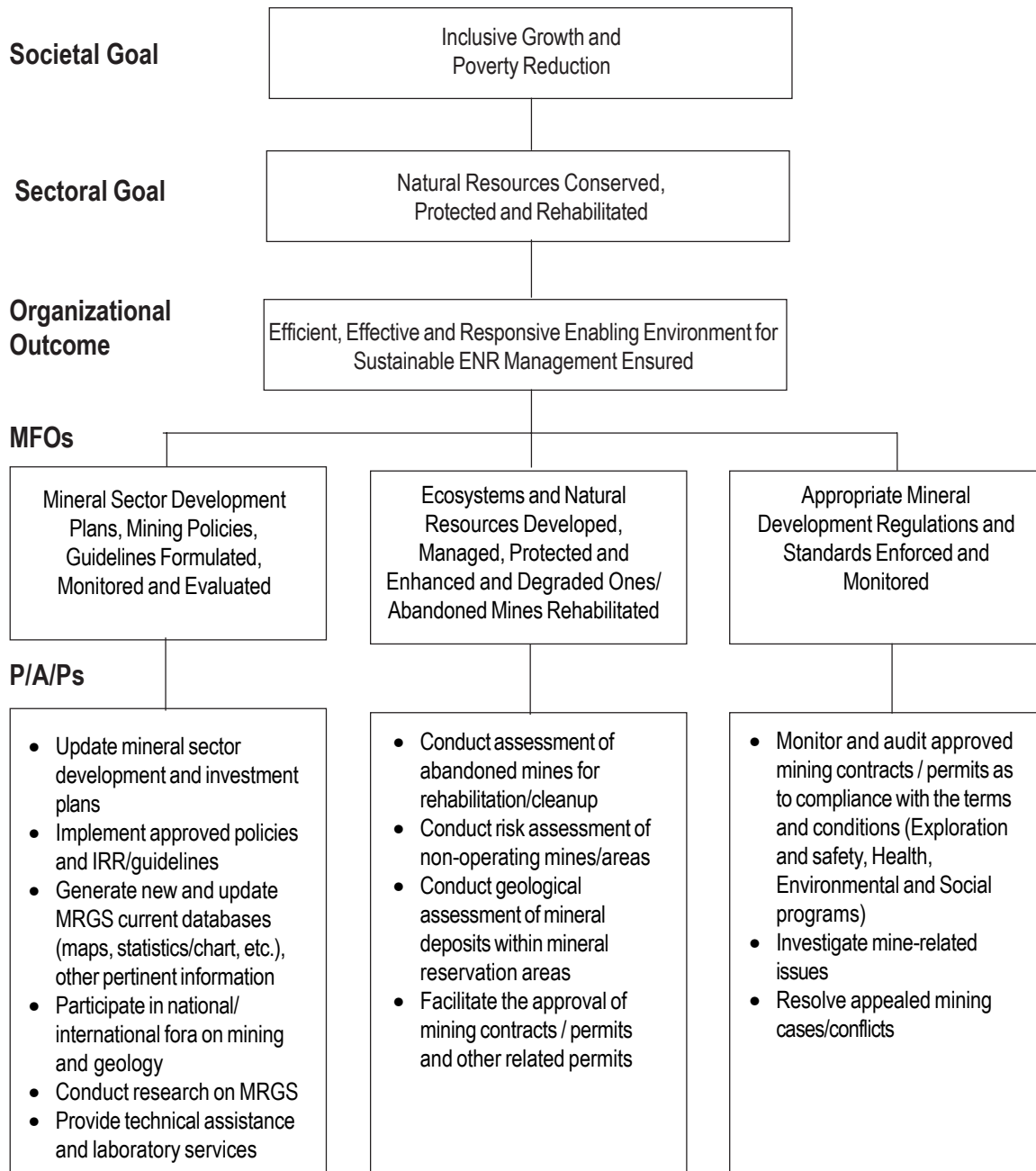
### Legal Basis

- **Executive Order No. 192** (June 10, 1987) created the Mines and Geosciences Bureau (MGB) as a staff bureau of the reorganized Department of Environment and Natural Resources (DENR) (from the Department of Environment, Energy and Natural Resources) by absorbing the Bureau of Mines and Geo-Sciences (BMGS), Mineral Reservations Development Board (MRDB), and the Gold Mining Industry Development Board (GMIDB).
- **Republic Act No. 7942** (March 3, 1995), otherwise known as the Philippine Mining Act of 1995, defined the line functions of the MGB under the DENR, and provided for the creation of the Bureau's Regional Offices.

### Mandate

The Mines and Geosciences Bureau (MGB) is responsible for the administration and disposition of mineral lands and mineral resources and the conduct of geological, mining, metallurgical, chemical and other researches, as well as geological and mineral exploration surveys. It implements the DENR's mandate in relation to the conservation, management, development and proper use of the State's mineral resources, including those in reservations, watershed areas, and lands of the public domain.

## LOGICAL FRAMEWORK (MGB)





## PERFORMANCE MEASURES AND TARGETS

(Amounts in Thousand Pesos)

Particulars	FY 2010	FY 2010	FY 2011	FY2012
	Target/ Amount	Actual/ Amount	Target/ Amount	Target/ Amount
<b>MFO 1 Mineral Sector Development Plans, Mining Policies, Guidelines Formulated, Monitored and Evaluated</b>	<b>323,954</b>	<b>348,938</b>	<b>449,390</b>	<b>448,465</b>
ENR and sub-sector plans, regulatory framework, policies/policy instruments prepared, updated, issued and disseminated				
Mineral policies/guidelines formulated / reviewed / implemented	4 (no.)	9 (no.)	4 (no.)	4 (no.)
National/international linkaging participated/conducted	74 (no.)	246 (no.)	106 (no.)	106 (no.)
Coherent countryside IEC activities enhancing general public awareness and appreciation of environmental issues conducted				
Awareness and advocacy on Mineral Resources and Geosciences (MRGS) conducted	57 (no.)	96 (no.)	76 (no.)	76 (no.)
Press releases / other media exposures	508 (no.)	574 (no.)	376 (no.)	376 (no.)
Capacity building and technical assistance on ENR services provided				
LGUs/stakeholders/small scale miners trained/oriented on Mineral Resources and Geosciences (MRGS) rules and regulations	516 (no.)	466 (no.)	268 (no.)	268 (no.)
Database, maps, charts, geographic information, statistics, technologies and other information for policy, planning, legislation and extension services generated, updated and reproduced/made		113		

Particulars	FY 2010	FY 2010	FY 2011	FY2012
	Target/ Amount	Actual/ Amount	Target/ Amount	Target/ Amount
<b>MFO 2 Ecosystems and Natural Resources Developed, Managed, Protected, and Enhanced and Degraded Ones/Abandoned Mines Rehabilitated</b>	<b>110,657</b>	<b>127,605</b>	<b>152,833</b>	<b>171,198</b>
Degraded ecosystems rehabilitated/restored -Rehabilitation implemented	1 minesite	1 minesite	1 minesite	1 minesite
Areas and resources placed under Sustainable Resource Management (SRM) to eligible stakeholders				
Mining contracts/permits approved/issued	1,750 (no.)	3,357 (no.)	1,750 (no.)	2,079 (no.)
National Mineral Reservation Program implemented	0 (has)	118,700 (has)	19,700 (has)	0 (has)
-geologic survey made	0 (no.)	1 (no.)	4 (no.)	2 (no.)
-market studies conducted	0 (no.)	1 (no.)	0 (no.)	2 (no.)
-training conducted	0 (no.)	4 (no.)	0 (no.)	6 (no.)
-sites assessed				
<b>MFO 3 Appropriate Mineral Development Regulations and Standards Enforced and Monitored</b>	<b>107,911</b>	<b>117,318</b>	<b>115,216</b>	<b>122,831</b>
Monitoring measures / mechanism / implementation arrangements established and operationalized -LGUs with monitoring teams organized	124 (no.)	131 (no.)	123 (no.)	123 (no.)
Compliance strictly monitored, reported, enforced with support from pertinent law enforcers				
Contracts / permit areas / projects monitored / audited for:				
-Implementation of work programs	336 (no.)	352 (no.)	429 (no.)	429 (no.)
-Safety, Health, Environment and Social (SHES) programs	203 (no.)	202 (no.)	203 (no.)	237 (no.)
Conflicts/cases addressed and acted upon expeditiously				
Complaints/conflicts acted upon	127 (no.)	273 (no.)	132 (no.)	132 (no.)
Cases resolved	32 (no.)	31 (no.)	35 (no.)	35 (no.)
<b>TOTAL</b>	<b>542,522</b>	<b>593,861*</b>	<b>717,439</b>	<b>742,494</b>

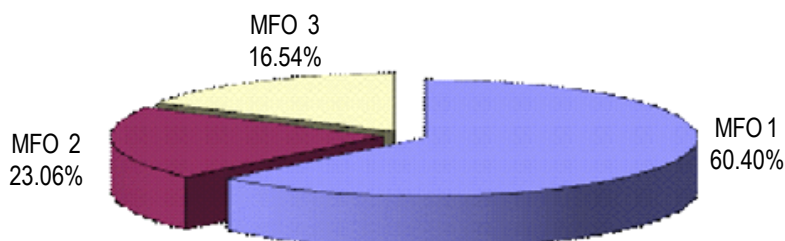
\*Includes fund releases from Special Purpose Funds (SPFs).

## FY 2012 MFO BUDGET

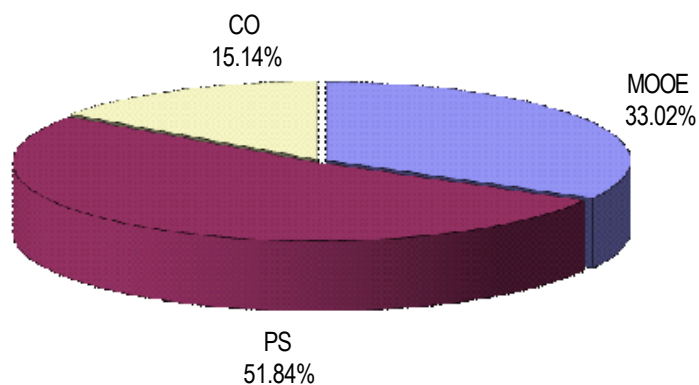
### By MFO/By Expense Class (In Thousand Pesos)

Particulars	PS	MOOE	CO	TOTAL	% SHARE
<b>MFO 1</b> Mineral Sector development plans, mining policies, guidelines formulated, monitored and evaluated	207,852	177,133	63,480	448,465	60.40%
<b>MFO 2</b> Ecosystems and natural resources developed, managed, protected, enhanced and degraded ones/abandoned mines	96,228	38,770	36,200	171,198	23.06%
<b>MFO 3</b> Appropriate mineral development regulations and standards enforced and monitored	80,831	29,280	12,720	122,831	16.54%
<b>Total</b>	<b>384,911</b>	<b>245,183</b>	<b>112,400</b>	<b>742,494</b>	<b>100.00%</b>
<b>% Share</b>	<b>51.84%</b>	<b>33.02%</b>	<b>15.14%</b>	<b>100.00%</b>	

### By MFO (Total Budget = PhP742,494,000)



### By Expense Class (Total Budget = PhP742,494,000)





## National Mapping and Resource Information Authority

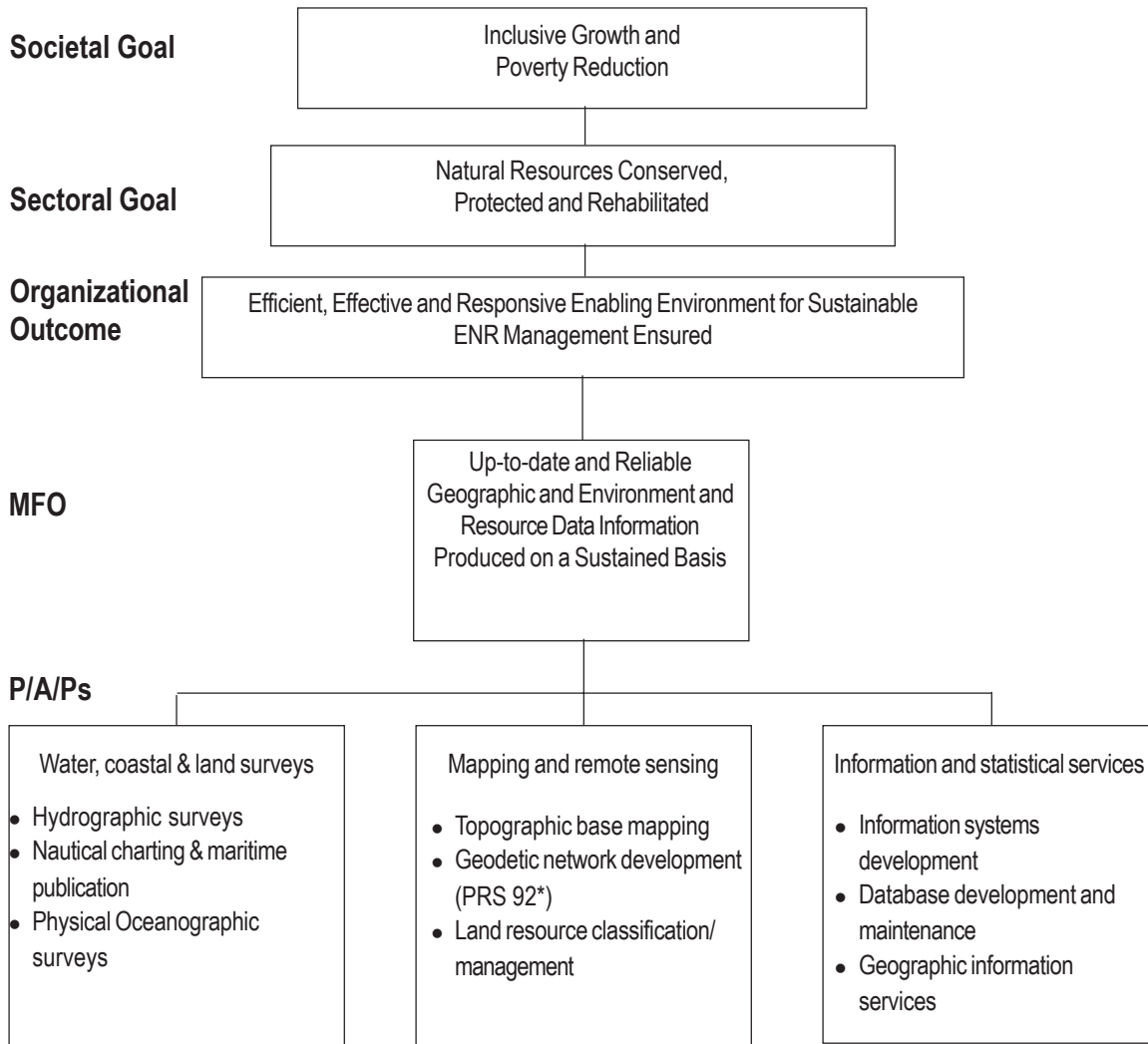
### Legal Basis

- **Executive Order No. 192** (June 10, 1987) created the National Mapping and Resource Information Authority (NAMRIA), integrating into it the functions and powers of the Natural Resources and Management Center (NRMCC), the National Cartography Authority (NCA), the Bureau of Coast and Geodetic Survey (BCGS), and the Land Classification Teams of the then Bureau of Forest Development (transformed into a Forest Management Bureau performing staff functions).
- **Administrative Order No. 16** (July 5, 2011) directing all government entities to coordinate with and secure clearance from NAMRIA in the acquisition of data from airborne and spaceborne platforms such as aerial photographs and satellite imageries, and other related products and services for mapping purposes.

### Mandate

The National Mapping and Resource Information Authority (NAMRIA) is the government's central mapping agency, depository and distribution facility for natural resources data of the country. It is responsible for the establishment of a nationwide geodetic network of control points that serves as common reference system for all surveys in the country. It conducts research on remote sensing technologies and generates vital data/information on environment, land and water resources needed by government agencies and other entities such as the private sector and local government units for development planning, environment and natural resource management, and delineation of maritime territories.

## LOGICAL FRAMEWORK (NAMRIA)



\* Philippine Reference System of 1992, "new" geodetic control network adopted as the standard reference for all surveying and mapping activities pursuant to EO 45 dated January 5, 1993. Aside from upgrading the old survey system, it adopts mathematical spatial language for more effective and accurate referencing system, consistent with universal operations of mapping and surveying activities.

**PERFORMANCE MEASURES AND TARGETS**

(Amounts in Thousand Pesos)

Particulars	FY 2010		FY 2011	FY 2012
	Target/ Amount	Actual/ Amount	Target/ Amount	Target/ Amount
<b>MFO 1</b>				
<b>Up-to-date and Reliable Geographic, Environment and Resource Data Information Produced on a Sustained Basis</b>	<b>765,159</b>	<b>829,436</b>	<b>681,764</b>	<b>926,273</b>
ENR-related database, maps, charts, geographic information, statistics, technologies, and other information for policy, planning, legislation and extension services regularly generated, updated and reproduced/made available				
Hydrographic Survey				
Exclusive Economic Zone continental shelf and archipelagic waters surveyed	60,000 sq. km.	29,306 sq. km.	0	0
Sealanes and Navigational routes surveyed	4,000 sq. km.	0	0	0
Ports and harbors surveyed	3 ports/harbors	2 ports/harbors	3 ports/harbors	7 ports/harbors
Survey vessels maintained	2 (no.)	2 (no.)	2 (no.)	2 (no.)
Magnetic Observatory upgraded	1 (no.)	1 (no.)	1 (no.)	1 (no.)
Nautical Charting and Maritime Publication				
Nautical charts compiled and updated	12 (no.)	11 (no.)	18 (no.)	21 (no.)
Electronic Navigational Charts published	6 (no.)	7 (no.)	9 (no.)	22 (no.)
Navigational Materials published	12 NTMs 2 volumes (CPB) 100 LOL / 2,000 TCT	12 NTMs 2 volumes (CPB) 100 LOL / 2,000 TCT	12 NTMs 4 chapters (CPB) 100 LOL / 2,000 TCT	12 NTMs 4 chapters (CPB) 100 LOL / 2,000 TCT
Physical Oceanographic Surveys				
Tide Stations maintained	12 (no.)	12 (no.)	12 (no.)	12 (no.)
Data Center maintained	1 (no.)	1 (no.)	1 (no.)	1 (no.)
Topographic Base Mapping				
Large-scale maps updated (1:10,000 mapscale)	51 comp. / 17 prod.	51 comp. / 17 prod.	23 comp. / 44 prod.	40 comp. / 40 prod.
Orthophoto maps produced	14	14	60	60
Medium-scale maps updated and produced (1:50,000 mapscale)	21	21	34	34
Administrative maps revised/produced	1	68%	2	2
Mapsheets reprinted/reproduced	100	107	100	100
Geodetic Network Development (PRS'92)				
Geodetic Control Points established	6 (no.)	6 (no.)	153 (no.)	0
Geodetic control points (GCP) reobserved	50	50	300	100
Inter-Island Connection established	3 (no.)	3 (no.)	1 (no.)	0
Line-km leveled	44 kms.	60 kms.	371 kms.	1,000 kms.
1 <sup>st</sup> order level lines established	144 kms.	144 kms.	1,000 kms.	500 kms.
Benchmark connection established	0	0	166	0
Active Geodetic Stations established	1 (no.)	1 (no.)	3 (no.)	3 (no.)
Tide Stations established and maintained	6 (no.)	6 (no.)	47 (no.)	47 (no.)
Gravity stations established	30 (no.)	31 (no.)	500 (no.)	300 (no.)

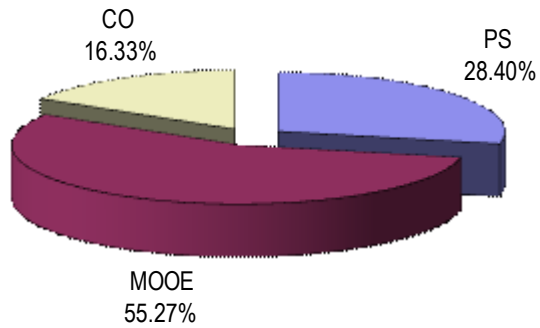
Particulars	FY 2010		FY 2011	FY 2012
	Target/ Amount	Actual/ Amount	Target/ Amount	Target/ Amount
*Includes fund releases from Special Purpose Funds (SPFs)				
Geodetic Network Information Systems (GNIS) maintained Operation Center established	16 regional & 2 national sites 0	16 regional & 2 national sites 0	16 regional & 2 national sites 1	16 regional & 2 national sites 0
Repeat stations observed	12 (no.)	12 (no.)	12 (no.)	12 (no.)
Magnetic stations	1 (no.)	1 (no.)	1 (no.)	1 (no.)
Land Resource Assessment and Mapping				
Area surveyed classified as alienable / disposable and forestlands	8,000 has	10,749 has	0	0
Provinces evaluated/mapped (forestlands)	0	0	22 (no.)	12 (no.)
Provinces evaluated/mapped (land cover)	0	0	30 (no.)	20 (no.)
Coastal resource maps produced	0	0	25 (no.)	25 (no.)
Provincial ENR data integrated	2,596,237 lots	690,551 lots	1 lot	1 lot
Maps of low-lying areas produced	0	0	38 (no.)	92 (no.)
Information Management and Statistical Services				
Application Systems developed	3 (no.)	3 (no.)	3 (no.)	3 (no.)
Database/metadata created	3 (no.)	3 (no.)	2 (no.)	2 (no.)
Extended Continental Shelf				
Area surveyed/delineated	2,000 sq. km.	11,000 sq. km.	2,000 sq. km.	0
Defense of ECS reports to UNCLOS	2 reports	2 reports	1 report	2 reports
<b>TOTAL</b>	<b>765,159</b>	<b>829,436*</b>	<b>681,764</b>	<b>926,273</b>

**FY 2012 MFO BUDGET**

**By MFO/By Expense Class**  
(In Thousand Pesos)

Particulars	PS	MOOE	CO	TOTAL
<b>MFO 1</b> Up-to-date and reliable geographic, environment and resource data information produced on a sustained basis	263,071	511,940	151,262	926,273
<b>% Share</b>	<b>28.40%</b>	<b>55.27%</b>	<b>16.33%</b>	<b>100.00%</b>

**By Expense Class**  
(Total Budget = P926,273,000)







## NATIONAL WATER RESOURCES BOARD

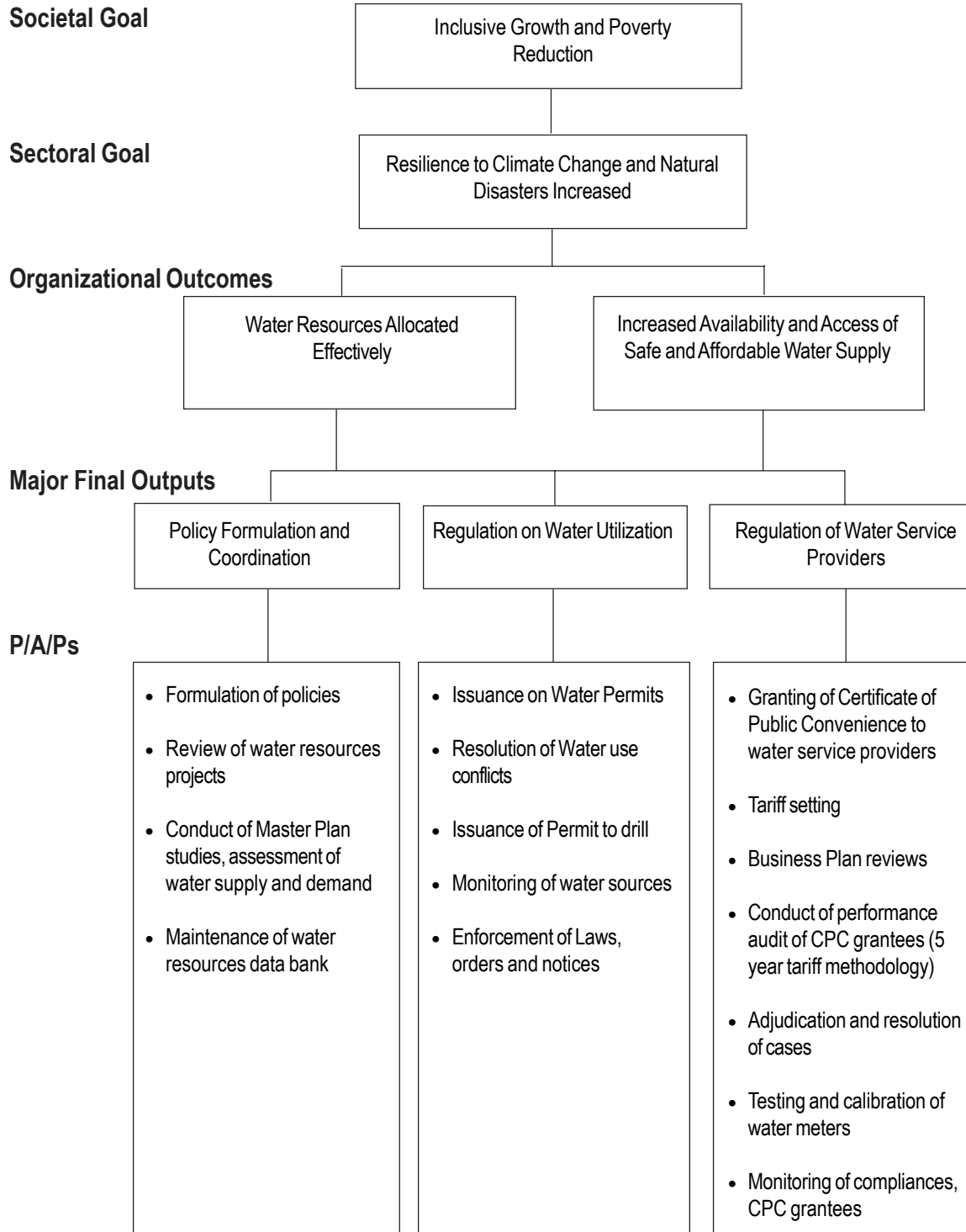
### Legal Basis

- **Presidential Decree No. 424** (March 28, 1974) created the National Water Resources Council (NWRC), vesting it with powers to coordinate and integrate water resources development.
- **Presidential Decree No. 1067** (December 31, 1976) instituted the Water Code of the Philippines, providing for the utilization, exploitation, development, conservation, and protection of water resources to be subject to the control and regulation of the government through the NWRC.
- **Presidential Decree No. 1206** (October 6, 1977) abolished the Board of Power and Waterworks and transferred its powers and functions relative to power utilities to the Board of Energy and its waterworks powers and functions to the NWRC.
- **Executive Order No. 124-A** (July 22, 1987) renamed the NWRC to National Water Resources Board (NWRB), transferring its technical functions to the Bureau of Research and Standards under the Department of Public Works and Highways.
- **Executive Order No. 123** (September 12, 2002) reconstituted the membership of the NWRB, to exclude those with direct claims on water resources, and placing it under the Office of the President. It also provided for NWRB to assume the regulatory functions of the Local Water Utilities Administration (LWUA).
- **Executive Order No. 860** (February 8, 2010) redefining the composition of the Board; returning the regulation of Water Districts to LWUA; and transferring NWRB to Department of Environment and Natural Resources (DENR).

### Mandate

The National Water Resources Board (NWRB) coordinates and regulates all water resources development and management of the country. It is responsible for achieving a scientific and orderly development of all water resources consistent with the principles of optimum utilization, conservation, and protection to meet present and future needs.

## LOGICAL FRAMEWORK (NWRB)



## PERFORMANCE MEASURES AND TARGETS

(Amounts in Thousand Pesos)

Particulars	FY 2010		FY 2011	FY 2012
	Target/ Amount	Actual/ Amount	Target/ Amount	Target/ Amount
<b>MFO1:</b>				
<b>Policy Formulation and Coordination</b>	<b>12,435</b>	<b>14,618</b>	<b>14,916</b>	<b>20,001</b>
% of policy formulated/articulated	60%	50%	60%	60%
Number of Water resources reviewed	13	5	12	12
Number of water resources assessment conducted	17	11	18	18
-Macro assessment	-	-	1	1
-Micro assessment			17	17
Groundwater management plan for water constraint cities	-	-	-	1
Number of Information Education Communication Campaign (IEC) conducted	9	9	1	3
<b>MFO2:</b>				
<b>Regulation on Water Utilization</b>	<b>15,103</b>	<b>14,865</b>	<b>17,031</b>	<b>16,745</b>
% of water permits applications approved	60%	59%	60%	60%
-Conditional water permit	500	573	550	700
-Water permits granted	150	260	240	300
Cleansing of pending water permit	-	-	1000	1000
% water use conflicts resolved over number of water use conflicts filed	60%	54%	86	86
Number of permits to drill issued	240	163	240	240
Number of water sources monitored over the target set	2,100	1,053	1,650	1,650
% of compliance over number of orders issued	60%	93%	60%	60%
<b>MFO3:</b>				
<b>Regulation of Water Service Providers</b>	<b>10,870</b>	<b>15,074</b>	<b>15,857</b>	<b>17,009</b>
% of Certificates of Public Convenience(CPC) applications decided over number of CPC applications received	60%	83%	60%	60%
No. of petition for water rates adjustment & others decided	24	50	24	24
Number of CPC validated	50	27	55	55
Number of water meters inspected/tested/sealed over number of water meters targeted	40,000	51,204	49,000	51,000
Number of water utilities inspected/ monitored over the target set	192	92	192	192
% of compliance over number of orders issued	60%	40%	60%	60%
<b>TOTAL</b>	<b>38,408</b>	<b>44,557 *</b>	<b>47,804</b>	<b>53,755</b>

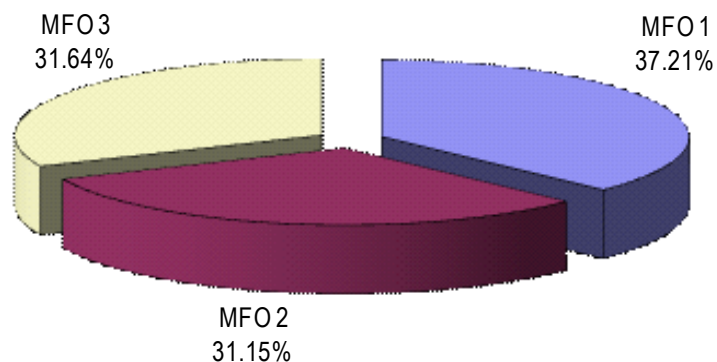
\* Inclusive of fund releases from Special Purpose Funds

## FY 2012 MFO BUDGET

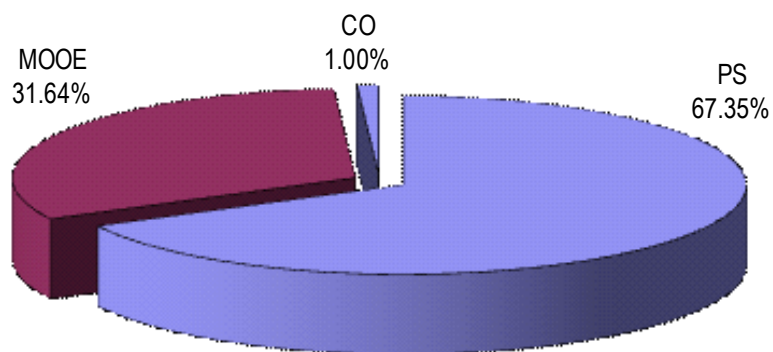
### By MFO/By Expense Class (In Thousand Pesos)

Particulars	PS	MOOE	CO	TOTAL	% SHARE
<b>MFO 1</b> Policy Formulation and Coordination	11.851	8.110	0.040	20.001	37.21%
<b>MFO 2</b> Regulation on Water Utilization	12.045	4.700	-	16.745	31.15%
<b>MFO 3</b> Regulation of Water Service Providers	12.310	4.199	0.500	17.009	31.64%
<b>Total</b>	<b>36.206</b>	<b>17.009</b>	<b>0.540</b>	<b>53.755</b>	<b>100%</b>
% Share	<b>67.35%</b>	<b>31.64%</b>	<b>1.00%</b>	<b>100%</b>	

**By MFO**  
(Total Budget = P53,755,000)



**By Expense Class**  
(Total Budget = P53,755,000)





## PALAWAN COUNCIL FOR SUSTAINABLE DEVELOPMENT STAFF

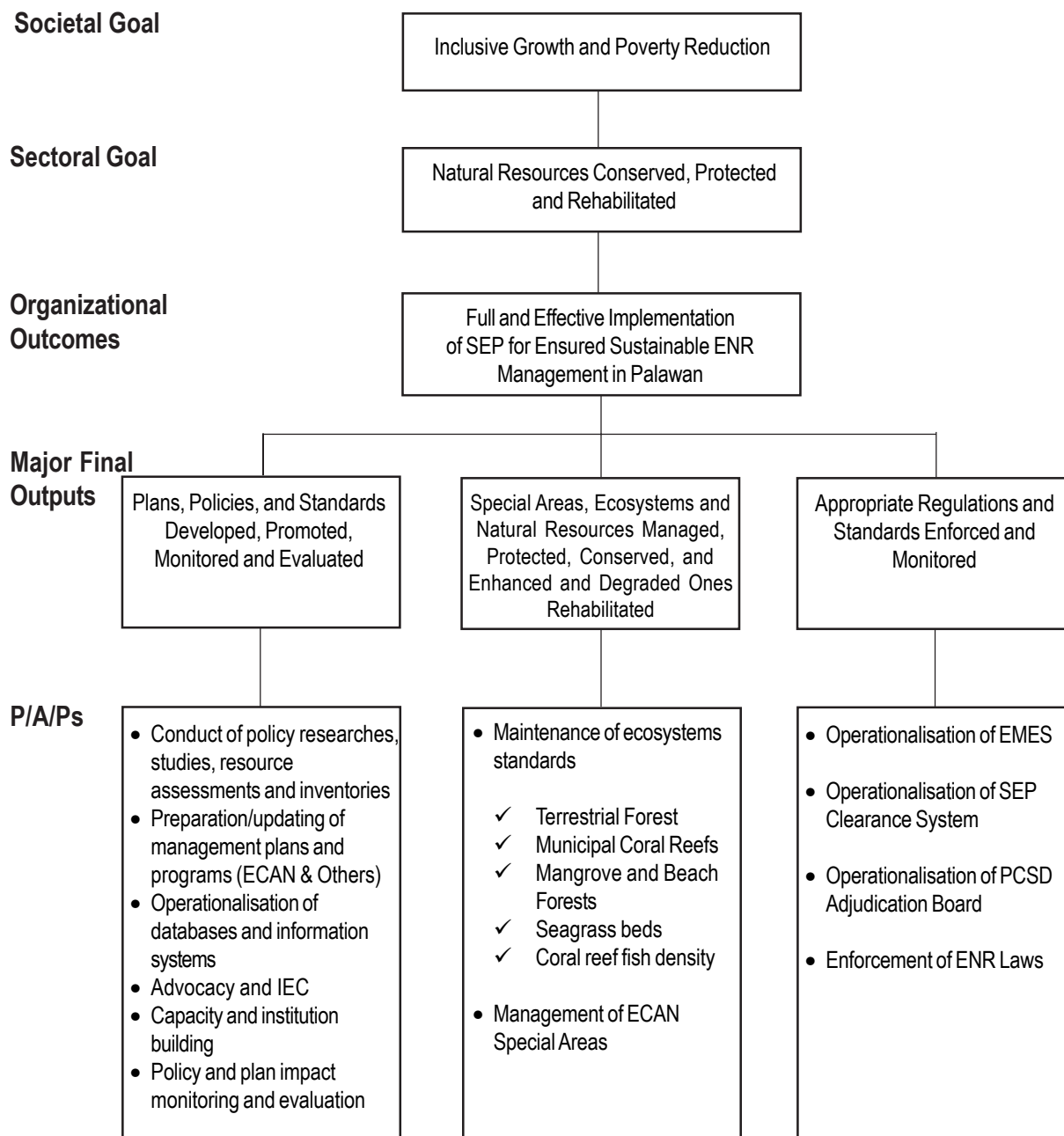
### Legal Basis

- **Republic Act No. 7611** (June 19, 1992), the Strategic Environmental Plan (SEP) for Palawan Act, provided for the adoption of a comprehensive framework for the sustainable development of Palawan, compatible with protecting and enhancing the natural resources and endangered environment of the province. It created the Palawan Council for Sustainable Development (PCSD) to be responsible for the governance and implementation of, and provision of policy direction to, the SEP. It converted the Palawan Integrated Area Development Project Office (PIADPO) to the Palawan Council for Sustainable Development Staff (PCSDS) to provide support to the Council.
- **Executive Order No. 734** ( June 18, 2008), Transferring the Palawan Council for Sustainable Development (PCSD) from the Office of the President to the Department of Environment and Natural Resources.

### Mandate

The Palawan Council for Sustainable Development Staff (PCSDS) serves as the regular staff of the Palawan Council for Sustainable Development (PCSD) in the coordination of policies and functions, implementation of programs, and organization of services for the governance and implementation of, and formulation of policy directions for, the Strategic Environmental Plan of Palawan.

## LOGICAL FRAMEWORK (PCSDS)



Note:

ECAN	- Environmentally Critical Area Network	WRC	- Wildlife Rescue Centres
EMES	- Environmental Monitoring and Evaluation System	WTMU	- Wildlife Trade Monitoring Unit
ENR	- Environment and Natural Resources	WEO	- Wildlife Enforcement Officers
IEC	- Information/Education/Communication	PCCRMC	- Provincial Cave and Cave Resources Management Committee
SEP	- Strategic Environmental Plan	PAB	- PCSD Adjudication Board
PENRA	- Palawan Economic and Natural Resources Accounts	PCSD	- Palawan Council For Sustainable Development
PSDTI	- Palawan Sustainable Development Training Institute	PCSDS	- Palawan Council for Sustainable Development Staff
PaRDEC	- Palawan Research and Development Consortium	CLUP	- Comprehensive Land Use Plan

## PERFORMANCE MEASURES AND TARGETS

(Amounts in Thousand Pesos)

Particulars	FY 2010		FY 2011	FY 2012
	Target/ Amount	Actual/ Amount	Target/ Amount	Target/ Amount
<b>MFO 1</b>				
<b>Plans, Policies and Standards Developed, Promoted, Monitored and Evaluated</b>	<b>37,577</b>	<b>30,895</b>	<b>28,696</b>	<b>29,239</b>
Conduct of policy researches, studies, resource assessments and inventories (no. of resolutions/guidelines)	24	24	26	26
Preparation and updating of plans (Ecan Zoning Plans)	7	7	7	2
Operation of databases, information systems for policy, planning, legislation & extension services				
- Geographic Information System (ECAN Maps)	5	5	5	5
- Environmental Laboratory (Water Quality Analysis)	50	249	50	210
- PENRA (resources accounted)	4	4	4	4
Areas reached by IEC and advocacy activities (no.)	8	24	5	12
Capacity building and technical assistance to LGUs/communities (no.)	5	15	5	5
Policy and plan outcomes, impacts monitored and evaluated				
- CLUPs/Community plans reviewed/integrated integrated with SEP & ECAN (no.)	5	15	5	5
- SEP review-policy reviewed (no.)	1	2	1	2
Ecosystems research (no.)	3			
Carrying capacity study of selected coastal areas for Eco-Tourism				
- Puerto Princesa (no.)	1			
- El Nido (no.)	1			
- Busuanga (no.)	1			
<b>MFO 2</b>				
<b>SEP Special Areas, ecosystems and natural resources managed, protected, conserved, enhanced and degraded ones rehabilitated</b>	<b>5,780</b>	<b>5,521</b>	<b>4,025</b>	<b>4,319</b>
Ecosystems managed, protected, conserved and enhanced				
- Forest cover maintained (%)	46	46	46	46
- Coral cover in excellent condition (%)	3	3	3	3
- Seagrass canopy cover in excellent condition (%)	2.8	2.8	2.8	2.8
- Mangrove forest cover maintained (%)	4	4	4	4
ECAN Special Areas managed (no.)	7	9	5	5

Particulars	FY 2010		FY 2011	FY 2012
	Target/ Amount	Actual/ Amount	Target/ Amount	Target/ Amount
Community-based ECAN Resources Management Learning Sites				
- Fish sanctuary established (no.)	2			
- Mangrove Eco-Park (no.)	2			
- Mariculture Park (no.)	1			
Resources Data Management Program				
- PCSDS-NRIS (Natural Resources Information System)	1			
- Geohazard Mapping	1			
<b>MFO 3</b>				
<b>Appropriate Regulations and Standards Enforced and Monitored</b>	<b>28,905</b>	<b>20,604</b>	<b>19,300</b>	<b>22,494</b>
SEP Monitoring Measures/Mechanisms permits				
Operation of Environmental Monitoring System				
- coastal marine areas monitored (no.)	2	2	2	2
- rivers monitored (no.)	26	26	26	26
- rainfall and microclimates monitored and established				
- rainfall stations monitored (no.)	5	4		
- rainfall stations established (no.)			3	3
Operation of SEP Clearance System				
SEP clearance/permits issued (no.)	100	142	100	100
Projects monitored for SEP clearance compliance (no.)	200	436	380	380
Cases filed/litigated (no.)	38	40	80	25
<b>TOTAL</b>	<b>72,262 *</b>	<b>57,020 **</b>	<b>52,021</b>	<b>56,052</b>

\* Includes P25M Congressional Initiative unreleased

\*\* Inclusive of fund releases against Special Purpose Funds

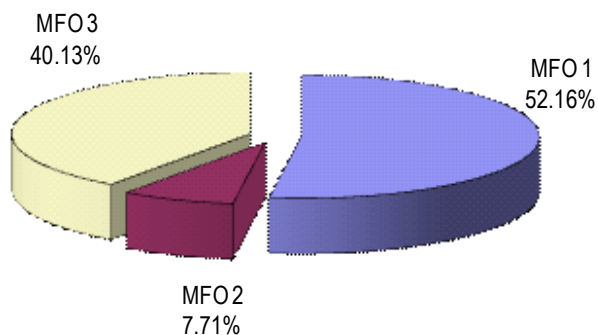


## FY 2012 MFO BUDGET

### By MFO/By Expense Class (In Thousand Pesos)

Particulars	PS	MOOE	CO	TOTAL	% SHARE
<b>MFO 1</b> Plans, Policies and Standards Developed, Promoted, Monitored and Evaluated	15,954	12,937	348	29,239	52.16%
<b>MFO 2</b> SEP Special Areas, ecosystems and natural resources managed, protected, conserved, and enhanced and degraded ones rehabilitated	3,085	1,234	-	4,319	7.71%
<b>MFO 3</b> Appropriate Regulations and Standard Enforced and Monitored	10,699	11,795	-	22,494	40.13%
<b>Total</b>	<b>29,738</b>	<b>25,966</b>	<b>348</b>	<b>56,052</b>	<b>100%</b>
<b>% Share</b>	<b>53.05%</b>	<b>46.32%</b>	<b>0.62%</b>	<b>100%</b>	

**By MFO**  
(Total Budget = P56,052,000)



**By Expense Class**  
(Total Budget = P56,052,000)

