



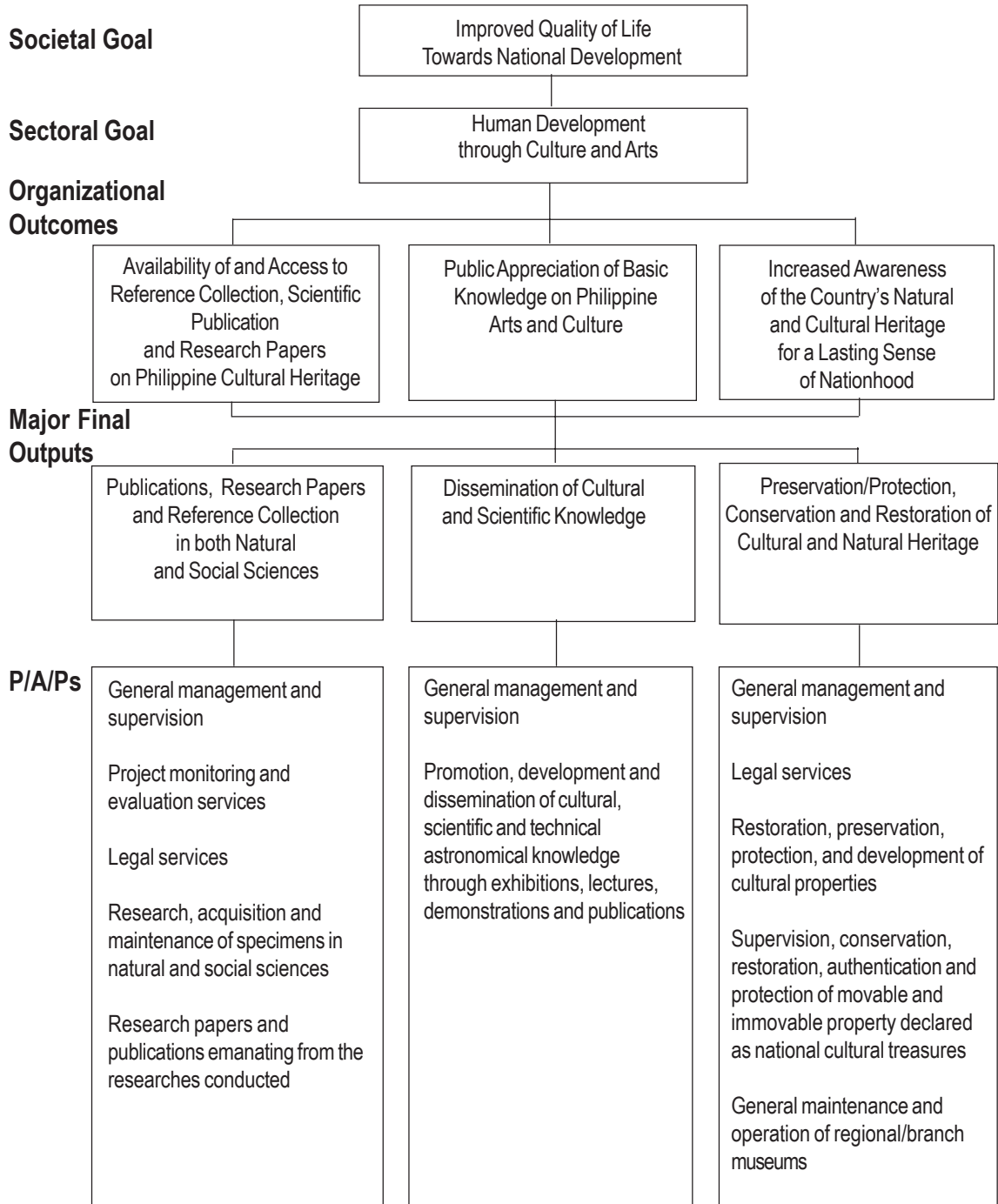
Legal Basis

Republic Act No. 8492 (February 12, 1998) established the National Museum as an educational and a scientific institution as well as a cultural center.

Mandate

The National Museum (NM) takes the lead in disseminating knowledge of Filipino cultural and historical heritage and in developing a corps of professionals knowledgeable about the preservation, enrichment, and dynamic evaluation of the Filipino national culture. It conducts basic and systematic research programs combining integrated laboratory and field work in anthropology and archaeology, geology and paleontology, botany and zoology, and maintains reference collection on these disciplines to promote scientific development in the Philippines. It also studies and preserves the nation's rich artistic and cultural heritage in the reconstruction and rebuilding of its past and in the development of the national cultural wealth.

LOGICAL FRAMEWORK (NM)



PERFORMANCE MEASURES AND TARGETS

(Amounts in Thousand Pesos)

| Particulars | FY 2010 | | FY 2011 | FY 2012 |
|--|-------------------|-----------------------|-------------------|-------------------|
| | Target/ Amount | Actual/ Amount | Target/ Amount | Target/ Amount |
| MFO 1 | 42,261 | 48,911 | 44,641 | 52,341 |
| Publications, research papers and reference collection in both natural and social sciences | | | | |
| Number of research projects conducted | 172 | 162 ^{1/} | 177 | 176 |
| Number of zoological, botanical, geological specimen acquired, processed, identified, illustrated, documented and maintained | 294,312 | 283,967 ^{1/} | 272,939 | 286,586 |
| Number of archeological and ethnological specimens acquired, processed, identified, illustrated, documented and maintained | 98,066 | 236,750 ^{2/} | 122,294 | 128,409 |
| Number of artifacts conserved and restored | 1,831 | 1,018 ^{1/} | 1,102 | 1,157 |
| Number of underwater and terrestrial archeological excavations, exploration conducted | 33 | 21 ^{1/} | 27 | 28 |
| Number of publications and research papers prepared | 135 | 162 ^{2/} | 177 | 176 |
| MFO 2 | 21,880 | 23,166 | 21,671 | 23,666 |
| Dissemination of cultural and scientific knowledge | | | | |
| Number of exhibits conducted (exhibits in Museum of the Filipino People) | 80 | 48 ^{1/} | 62 | 65 |
| Number of visitors / viewers of exhibits (exhibits in Museum of the Filipino People) | 484,436 | 564,622 ^{2/} | 372,087 | 390,691 |
| Number of attendees of museology trainings, lectures, seminars / workshops organized | 1,178 | 1,776 ^{2/} | 912 | 958 |
| Number of scientific / technical papers, popular/ promotional instructional materials prepared for publications and promotions | 1,680 | 1,377 ^{1/} | 1,467 | 1,540 |
| Number of astronomical shows demonstrated (Planetarium Bldg. and Mobile Planetarium) | 300 | 130 ^{1/} | 103 | 108 |

| Particulars | FY 2010 | | FY 2011 Target / Amount | FY 2012 Target / Amount |
|---|--------------------|---------------------|-------------------------------|-------------------------------|
| | Target / Amount | Actual/ Amount | | |
| MFO 3 | | | | |
| Preservation / protection, conservation and restoration of cultural and natural heritage | 62,950 | 82,264 | 82,591 | 168,659 |
| Number of cultural properties authenticated, registered and identified | 1,500 | 754 ^{1/} | 1,228 | 1,289 |
| Number of licenses and permits issued | 600 | 493 ^{1/} | 235 | 247 |
| Number of artworks acquired, identified, authenticated, exhibited, illustrated and maintained | 3,930 | 5,466 ^{2/} | 3,880 | 4,074 |
| Number of immovable cultural properties/world heritage sites conserved, restored, preserved and developed | 7 | 14 ^{2/} | 6 | 7 |
| Number of Regional Museums maintained and developed | | | | |
| Regional Museum | 15 | 14 ^{3/} | 14 | 14 |
| Museum Site | 4 | 5 ^{4/} | 4 | 5 |
| TOTAL | 127,091 | 154,341 | 148,903 | 244,666 |

NOTE:

1/ Attributed to the changes in priorities.

2/ Intensified operations and public information dissemination.

3/ Branch Museum in Tuguegarao, Cagayan transferred to Penablanca, Cagayan.

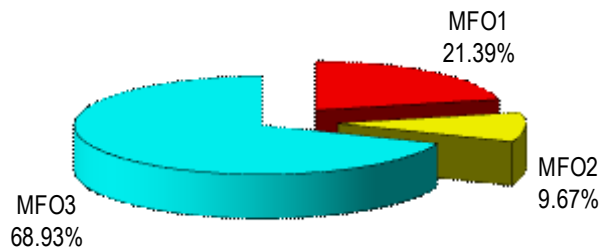
4/ Inclusion of the site Museum in Benguet

FY 2012 MFO Budget

By MFO/By Expense Class (In Thousand Pesos)

| Particulars | PS | MOOE | CO | Total | % Share |
|--|--------|--------|--------|---------|---------|
| MFO 1 Publications, research papers and reference collection in both natural and social sciences | 16,698 | 15,215 | 20,428 | 52,341 | 21.39% |
| MFO 2 Dissemination of cultural and scientific knowledge | 7,550 | 6,879 | 9,237 | 23,666 | 9.67% |
| MFO 3 Preservation / protection, conservation and restoration of cultural and natural heritage | 53,805 | 49,028 | 65,826 | 168,659 | 68.93% |
| TOTAL | 78,053 | 71,122 | 95,491 | 244,666 | 100.00% |
| % Share | 31.90% | 29.07% | 39.03% | 100.00% | |

By MFO (Total Budget = P244,666,000)



BY Expense Class (Total Budget = P244,666,000)

