

News and Information Bureau

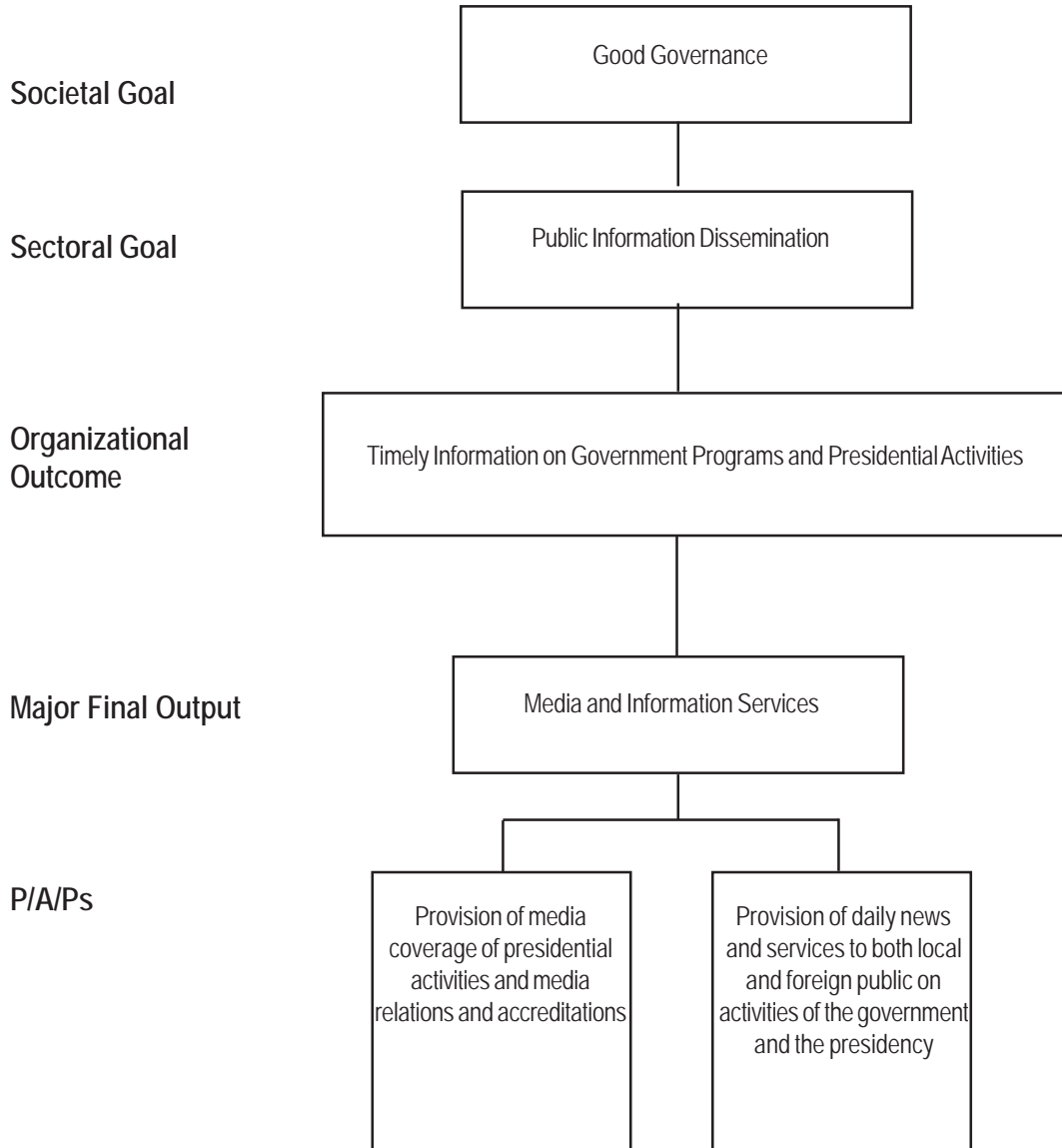
Legal Basis

- **Executive Order No. 297** (July 25, 1987) created the News and Information Bureau (NIB) under the Office of the Press Secretary (OPS).
- **Executive Order No. 4** (July 30, 2010) reorganized and renamed the OPS as the Presidential Communications Operations Office (PCOO) and placed the NIB as an attached agency under the control and supervision of the PCOO.

Mandate

The NIB provides efficient, effective, productive, and economical services relating to the development and formulation of a domestic and foreign information program for the Government in general, and the Presidency in particular, including the development of strategies for the dissemination of information on specific government programs.

LOGICAL FRAMEWORK (NIB)



PERFORMANCE MEASURES AND TARGETS
(Amounts in Thousand Pesos)

| Particulars | FY 2009 | FY 2010 | FY 2011 |
|--|---------------|---------------|---------------|
| | Actual/Amount | Target/Amount | Target/Amount |
| MFO | | | |
| Media and Information Services | P 97,959 | P 93,129 | P 91,073 |
| News stories submitted on presidential/ government policies, pronouncements, directives, programs, activities, etc., photographs taken of presidential activities, including visits of states guests | | | |
| No. of press and photo releases | 22,295 | 9,600 | 9,600 |
| Speeches, press conferences, briefings, interviews transcribed | 14,127 | 4,300 | 4,300 |
| News monitoring reports and clippings submitted | 227,443 | 188,000 | 188,000 |
| Media relations services rendered | 7,733 | 6,500 | 6,500 |
| Journalists assisted and accredited | 118,092 | 94,000 | 94,000 |
| Daily news stories, news photos and information gathered and disseminated | 114,568 | 61,022 | 61,022 |
| TOTAL | P 97,959 | P 93,129 | P 91,073 |

FY 2011 MFO BUDGET

By MFO/By Expense Class
(In Thousand Pesos)

| Particulars | PS | MOOE | CO | TOTAL | %Share |
|--------------------------------|--------|--------|-------|--------|---------|
| MFO | | | | | |
| Media and Information Services | 66,180 | 24,893 | - | 91,073 | 100% |
| TOTAL | 66,180 | 24,893 | - | 91,073 | |
| % Share | 72.67% | 27.33% | 0.00% | | 100.00% |

By Expense Class
(Total Budget = P91,073,000)

