



## Construction Manpower Development Foundation

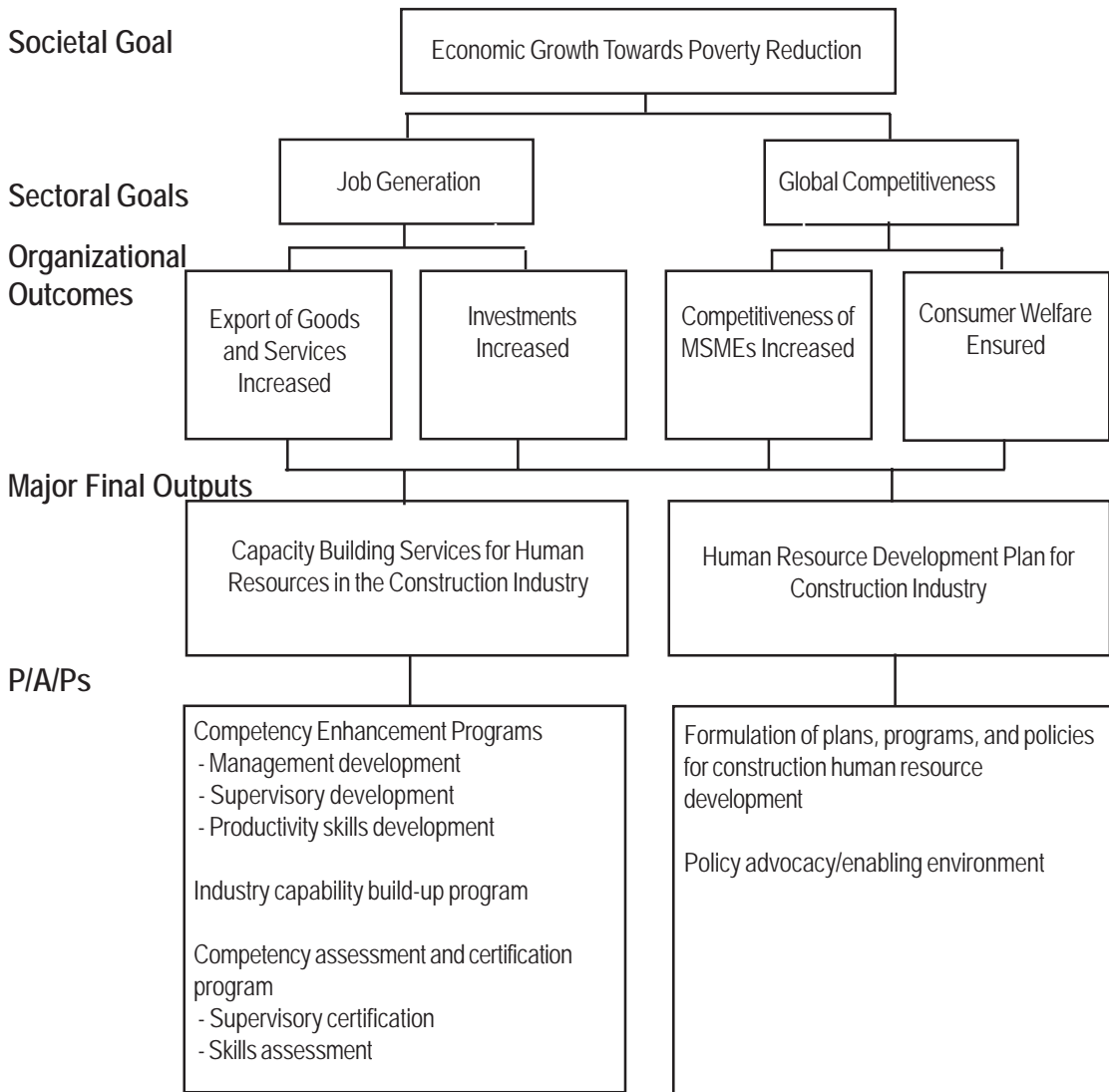
### Legal Basis

**Presidential Decree No. 1746** (November 28, 1980) created the Construction Manpower Development Foundation (CMDf) as one of the Boards of the Construction Industry Authority of the Philippines (CIAP).

### Mandate

The Construction Manpower Development Foundation (CMDf) oversees the development of human resources for the construction industry, i.e., craftsmen, engineers, supervisors, and managers, human resource development being a vital concern of the industry and the holistic concept of industry growth and development.

LOGICAL FRAMEWORK (CMDf)



**PERFORMANCE MEASURES AND TARGETS**

(Amounts in Thousand Pesos)

Particulars	FY 2009 Actual/ Amount	FY 2010 Target/ Amount	FY 2011 Target/ Amount
<b>MFO 1</b>	<b>19,142</b>	<b>18,269</b>	<b>18,594</b>
<b>Capability Building Services for Human Resources in the Construction Industry</b>			
Number of training courses conducted on:	176	190	190
a. Construction management courses	5	12	12
b. Supervisory management courses	103	107	107
c. Productivity skills and trade testing	68	71	71
Number of promotion programs with the LGUs	7	13	14
Number of MOAs forged with partners	24	23	23
<b>MFO 2</b>	<b>2,869</b>	<b>2,730</b>	<b>2,778</b>
<b>Human Resource Development Plan for Construction Industry</b>			
Number of HRD policies adopted/formulated	4	4	4
<b>Total</b>	<b>22,011</b>	<b>20,999</b>	<b>21,372</b>

## FY 2011 MFO BUDGET

### By MFO/By Expense Class (In Thousand Pesos)

Particulars	PS	MOOE	CO	TOTAL	% SHARE
MFO 1 Capability Building Services for Resources in the Construction Industry	9,597	8,585	412	18,594	87.00%
MFO 2 Human Resource Development Plan for Construction Industry	1,434	1,344	-	2,778	13.00%
<b>Total</b>	<b>11,031</b>	<b>9,929</b>	<b>412</b>	<b>21,372</b>	<b>100%</b>
<b>% Share</b>	<b>51.61%</b>	<b>46.46%</b>	<b>1.93%</b>	<b>100%</b>	

