

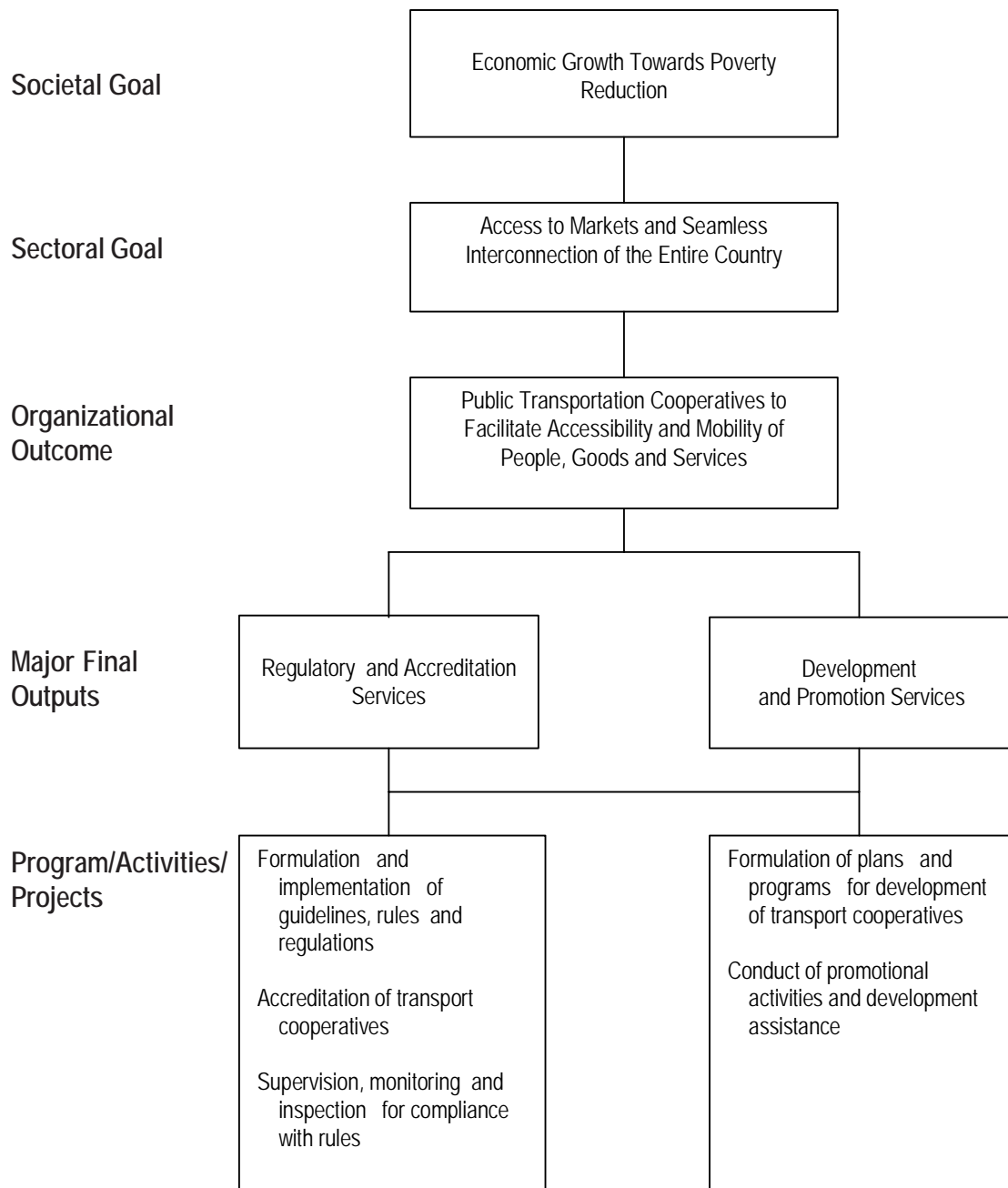
Legal Basis

- **Executive Order No. 898** (May 28, 1983) created the Office of Transportation Cooperatives (OTC) to promote the growth and development of transportation cooperatives.
- **Presidential Memorandum Order No. 116** (September 15, 2003) directed the OTC, as lead agency, to enhance and intensify the voluntary conversion of tricycle operation/associations into transport service cooperatives.

Mandate

The Office of Transportation Cooperatives (OTC) promulgates and implements rules and regulations to govern the promotion, organization, regulation, supervision, and development of transportation cooperatives. It leads in encouraging the conversion of Tricycle Operators and Drivers Associations (TODA) into Transport Service Cooperatives (TSCs). The OTC's mission is to gear the transportation cooperatives system towards maximum integration of the public transport system and to uplift the socio-economic condition of the public utility system and the public utility transport workers, particularly the drivers.

LOGICAL FRAMEWORK (OTC)



PERFORMANCE MEASURES AND TARGETS
(Amounts in Thousand Pesos)

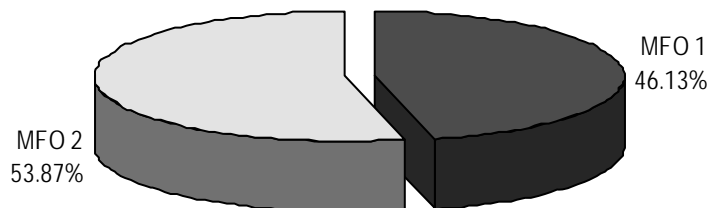
Particulars	FY 2009 Actual/ Amount	FY 2010 Target/ Amount	FY 2011 Target/ Amount
MFO 1			
Regulatory and Accreditation Services	6,581	5,950	6,771
Number of guidelines, rules and regulations formulated and issued	14	12	2
Number of guidelines, rules and regulations implemented	14	12	2
Number of applications filed for transport cooperatives (TCs) accreditation processed within the prescribed time	100	90	100
Number of TCs accreditation certificates issued	100	90	55
Number of TCs monitored found complying with rules	66	38	70
MFO 2			
Development and Promotion Services	7,897	6,920	7,908
Number of TCs development and promotion plans and programs formulated	7	6	8
Number of TCs promotional activities conducted	90	74	50
Number of TCs provided technical development assistance	201	120	300
Number of TCs capability building programs conducted	146	136	150
TOTAL	14,478	12,870	14,679

FY 2011 MFO BUDGET

By MFO/By Expense Class (In Thousand Pesos)

Particulars	PS	MOOE	CO	TOTAL	% Share
MFO 1 Regulatory and Accreditation Services	4,764	2,007	-	6,771	46.13%
MFO 2 Development and Promotion Services	5,809	1,999	100	7,908	53.87%
TOTAL	10,573	4,006	100	14,679	100%
% Share	72.03%	27.29%	0.68%	100%	

By MFO (Total Budget = P14,679,000)



By Expense Class (Total Budget = P14,679,000)

