



## Science Education Institute

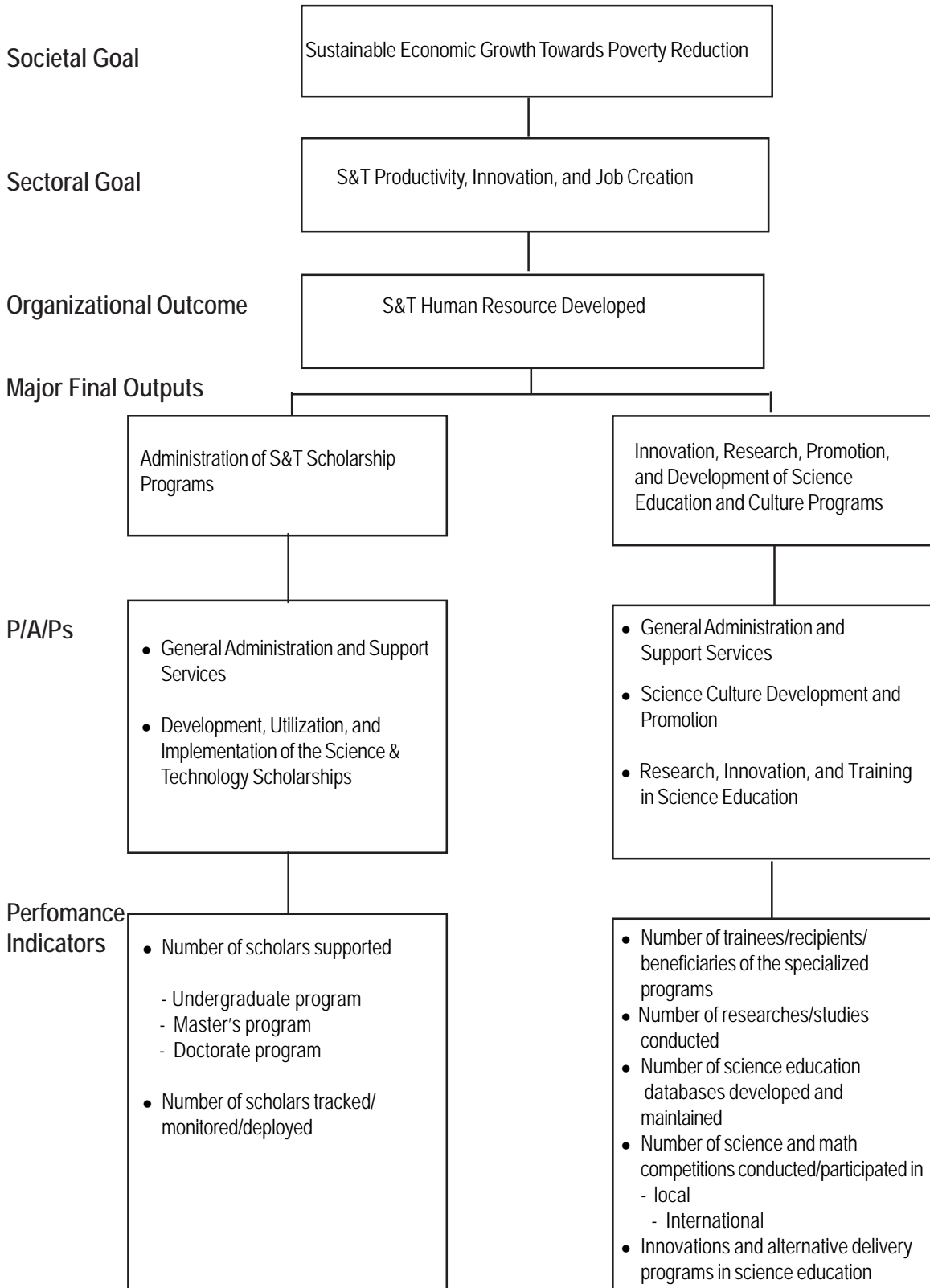
### Legal Basis

**Executive Order No. 128** (January 30, 1987), otherwise known as the Reorganization Act of the National Science and Technology Authority, created the Science Education Institute.

### Mandate

The Science Education Institute (SEI) formulates plans and establishes programs and projects for the promotion and development of science and technology education and training in the field of science and technology in coordination with other institutions of learning. It undertakes science and technology manpower development and administers scholarships, awards, and grants.

LOGICAL FRAMEWORK (SEI)



**PERFORMANCE MEASURES AND TARGETS**  
(Amounts in Thousand Pesos)

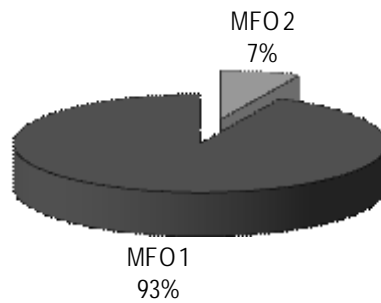
| Particulars  | FY 2009           | FY 2010           | FY 2011           |
|--|-------------------|-------------------|-------------------|
|  | Actual/<br>Amount | Target/<br>Amount | Target/<br>Amount |
| <b>MFO 1</b>   | <b>706,429</b>    | <b>439,314</b>    | <b>474,329</b>    |
| <b>Administration of Science and Technology<br/>Scholarship Programs</b>       |                   |                   |                   |
| Number of scholars supported   |                   |                   |                   |
| Undergraduate level  | 11,246            | 10,753            | 11,038            |
| Masters program  | 173               | 91                | 91                |
| Doctoral program   | 87                | 81                | 117               |
| Number of scholar graduates monitored/tracked                                  | 14,322            | 10,925            | 11,246            |
| <b>MFO 2</b>   | <b>66,299</b>     | <b>36,031</b>     | <b>36,950</b>     |
| <b>Promotion and Development of Science<br/>Education and Culture Programs</b> |                   |                   |                   |
| Number of trainees/beneficiaries   |                   |                   |                   |
| Advanced Specialized Training Programs in Science<br>and Mathematics Education | 653               | 300               | 480               |
| Science Camp(Science, Mathematics & Engineering)                               | 268               | 65                | 130               |
| Number of lessons in secondary science and math digitized                      | 18                | 133               | 118               |
| Number of modules for elementary English and Filipino<br>digitized             | 40                | 40                | 40                |
| Number of Mobile IT Classrooms deployed (MITC)                                 | 5                 | 4*                | 4                 |
| Number of science education databases<br>developed and maintained              | 14                | 12**              | 14                |
| Number of studies/researches conducted/assisted                                | 3                 | 5                 | 5                 |
| Number of science and math competitions  |                   |                   |                   |
| <i>Conducted/Assisted/Participated</i>   |                   |                   |                   |
| Local  | 9                 | 12                | 12                |
| Abroad   | 5                 | 5                 | 5                 |
| <b>TOTAL</b>   | <b>772,728</b>    | <b>475,345</b>    | <b>511,279</b>    |

## FY 2011 MFO BUDGET

### By MFO/By Expense Class (In Thousand Pesos)

| Particulars   | PS     | MOOE    | CO  | TOTAL   | % Share |
|---|--------|---------|-----|---------|---------|
| <b>MFO 1</b>  |        |         |     |         |         |
| Administration of S&T Scholarship Programs  | 11,504 | 462,330 | 495 | 474,329 | 93%     |
| <b>MFO 2</b>  |        |         |     |         |         |
| Innovations, Research, Promotion, and<br>Development of Science Education and<br>Culture Programs | 6,046  | 30,409  | 495 | 36,950  | 7%      |
| <b>Total</b>  | 17,550 | 492,739 | 990 | 511,279 | 100%    |
| <b>% Share</b>  | 3%     | 96%     | 1%  | 100%    |         |

**By MFO**  
(Total Budget = P511,279,000)



**By Expense Class**  
(Total Budget = P511,279,000)

