



Philippine Navy

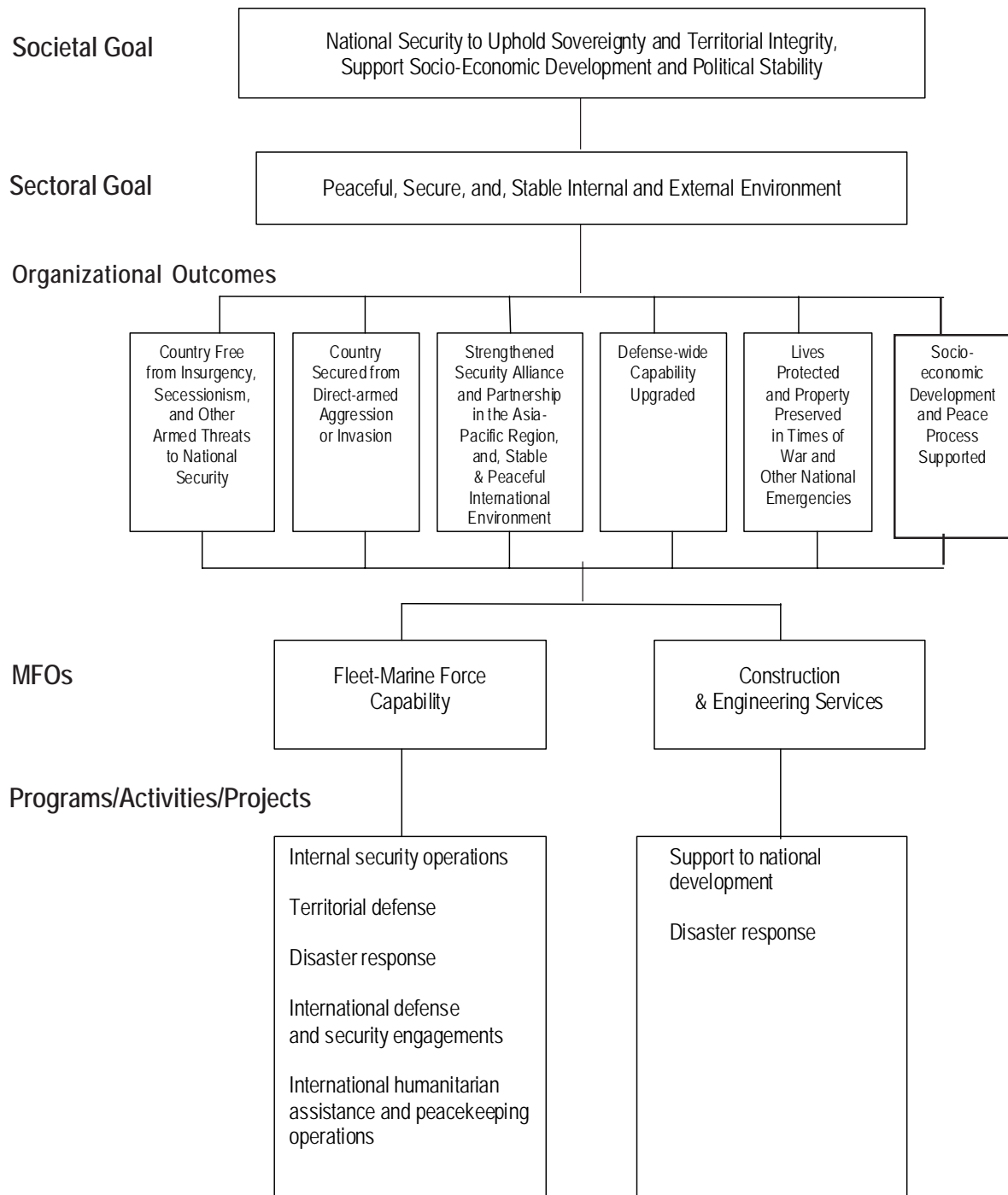
Legal Basis

- **Commonwealth Act No. 1** (December 21, 1935), the National Defense Act, created and organized the Off-Shore Patrol (OSP) under the Regular Force of the Army of the Philippines.
- **Executive Order No 94** (October 4, 1947) created the Philippine Naval Patrol, forerunner of the Philippine Navy, as one of the Major Commands of the Armed Forces of the Philippines (AFP).
- **Executive Order No. 389** (December 23, 1950), Reorganizing the Armed Forces of the Philippines, created and organized the Philippine Navy as one of the Major Services of the AFP with primary concerns in operations at sea.
- **Executive Order No. 292** (July 25, 1987), Administrative Code of 1987, provided for the powers, functions and organizational structure of the Philippine Navy as one of the Major Services of the AFP under the supervision and control of the Department of National Defense(DND).

Mandate

The Philippine Navy (PN) organizes, trains, deploys, and maintains forces for the prompt and sustained naval and maritime operations in support of the United Commands in the accomplishment of the AFP mission.

LOGICAL FRAMEWORK (PN)



PERFORMANCE MEASURES AND TARGETS
(Amounts in Thousand Pesos)

Particulars	FY 2009	FY 2010	FY 2011
	Actual/Amount	Target/ Amount	Target/Amount
MFO 1 Fleet-Marine Force Capability	11,372,102	10,261,817	11,008,305
No. of navy units maintained/supported	20	20	20
Operational Tempo			
Total steaming time	58,214	56,756	56,756
Total nautical miles covered	450,038	368,913	368,913
Total flying time	2,390	2,858	2,858
Total nautical miles covered	253,021	285,800	285,800
No. of ground operations	2,039	2,000	2,000
MFO 2 Construction and Engineering Services	377,610	377,610	360,675
No. of navy units maintained/supported	1	1	1
Operational Tempo			
No. of buildings/other facilities constructed	65	95	65
TOTAL	1/ 11,749,712	10,639,427	11,368,980

Note:

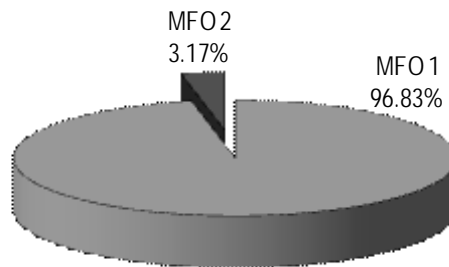
1/ Includes Customs Duties and Taxes (P6.081M) and transfers from Miscellaneous Personnel Benefits Fund (475.836M), Pension and Gratuity Fund (722.543M) and Continuing Appropriations (P383.365M)

FY 2011 MFO BUDGET

By MFO/By Expense Class (In Thousand Pesos)

Particulars	PS	MOOE	TOTAL	% Share
MFO 1				
Fleet Marine Force Capability	7,439,626	3,568,679	11,008,305	96.83%
MFO 2				
Construction and Engineering Services	257,095	103,580	360,675	3.17%
TOTAL	7,696,721	3,672,259	11,368,980	100%
% Share	67.70%	32.30%	100%	

By MFO (Total Budget = P11,368,980,000)



By Expense Class (Total Budget = P11,368,980,000)

