



Philippine High School for the Arts

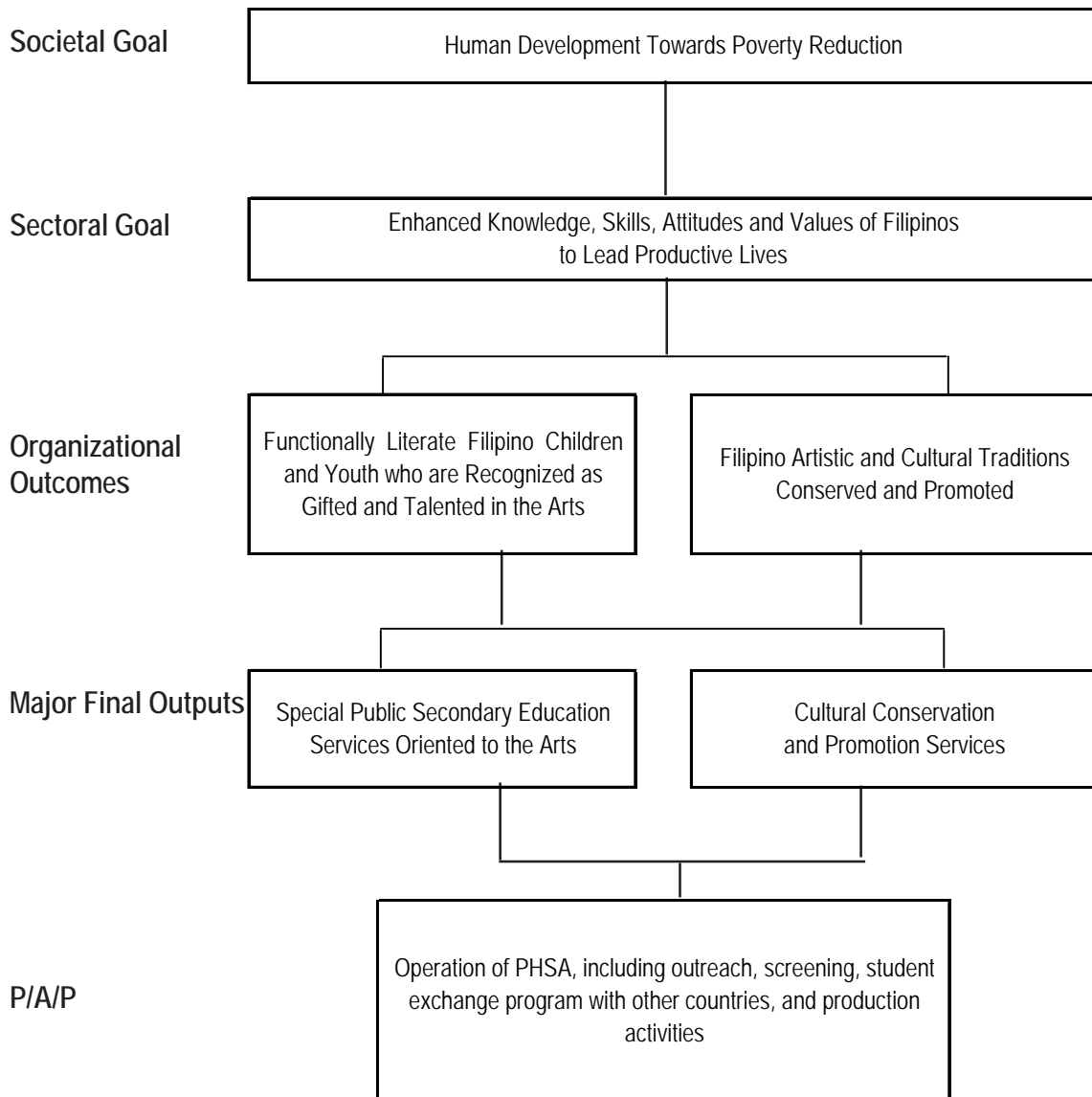
Legal Basis

- **Presidential Decree No. 1287** (January 20, 1978) formally established the Philippine High School for the Arts (PHSA) which was created as a special school on June 11, 1977.
- **Executive Order No. 420** (September 7, 1990) converted the PHSA into a regular government agency attached to the Department of Education.

Mandate

The Philippine High School for the Arts (PHSA) implements a general secondary level program, combined with a special curriculum oriented to the arts and geared to the early recognition and development of highly talented, exceptionally gifted students in the arts, thus providing a continuing source of artists of excellence and leaders in the preservation and promotion of Filipino heritage in the arts.

LOGICAL FRAMEWORK (PHSA)



PERFORMANCE MEASURES AND TARGETS
(Amounts in Thousand Pesos)

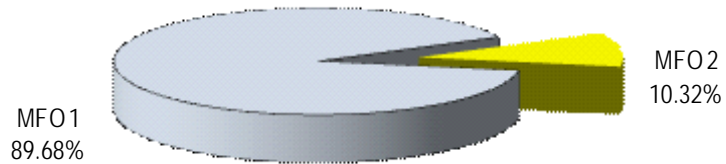
Particulars	2009	2010	2011
	Actual/ Amount	Target/ Amount	Target/ Amount
MFO 1			
Special Public Secondary Education Services Oriented to the Arts	35,741	47,713	42,407
Number of applicants received for assessment	901	1,100	1,100
Number of applicants screened and identified for scholarship	53	50	32
Mean percentage performance in Center for Educational Measurement across levels	86%	85%	85%
Mean percentage score in the National Achievement Test (NAT)	55%	61%	61%
Mean percentage Score in the National Career Assessment Exam (NCAE)	95%	90%	90%
MFO 2			
Cultural Conservation and Promotion Services	11,339	10,991	4,878
Number of research-based artworks published, staged, and/or exhibited	17	20	25
Number of schools assisted in initiating own and/or maintaining existing Special Arts Program	10	10	10
Number of persons attending cultural activities	5,079	5,300	6,000
Outside PHSA Within PHSA			
Total	47,080	58,704	47,285

FY 2011 MFO BUDGET

By MFO/By Expense Class (In Thousand Pesos)

Particulars	PS	MOOE	CO	TOTAL	% Share
MFO 1 Special public secondary education services oriented to the arts	10,394	31,505	508	42,407	89.68%
MFO 2 Cultural conservation and promotion services	2,751	2,127	-	4,878	10.32%
TOTAL	13,145	33,632	508	47,285	100.00%
% Share	27.80%	71.13%	1.07%	100.00%	

By MFO
(Total Budget = P47,285,000)



By Expense Class
(Total Budget=P47,285,000)

