



DEPARTMENT OF EDUCATION

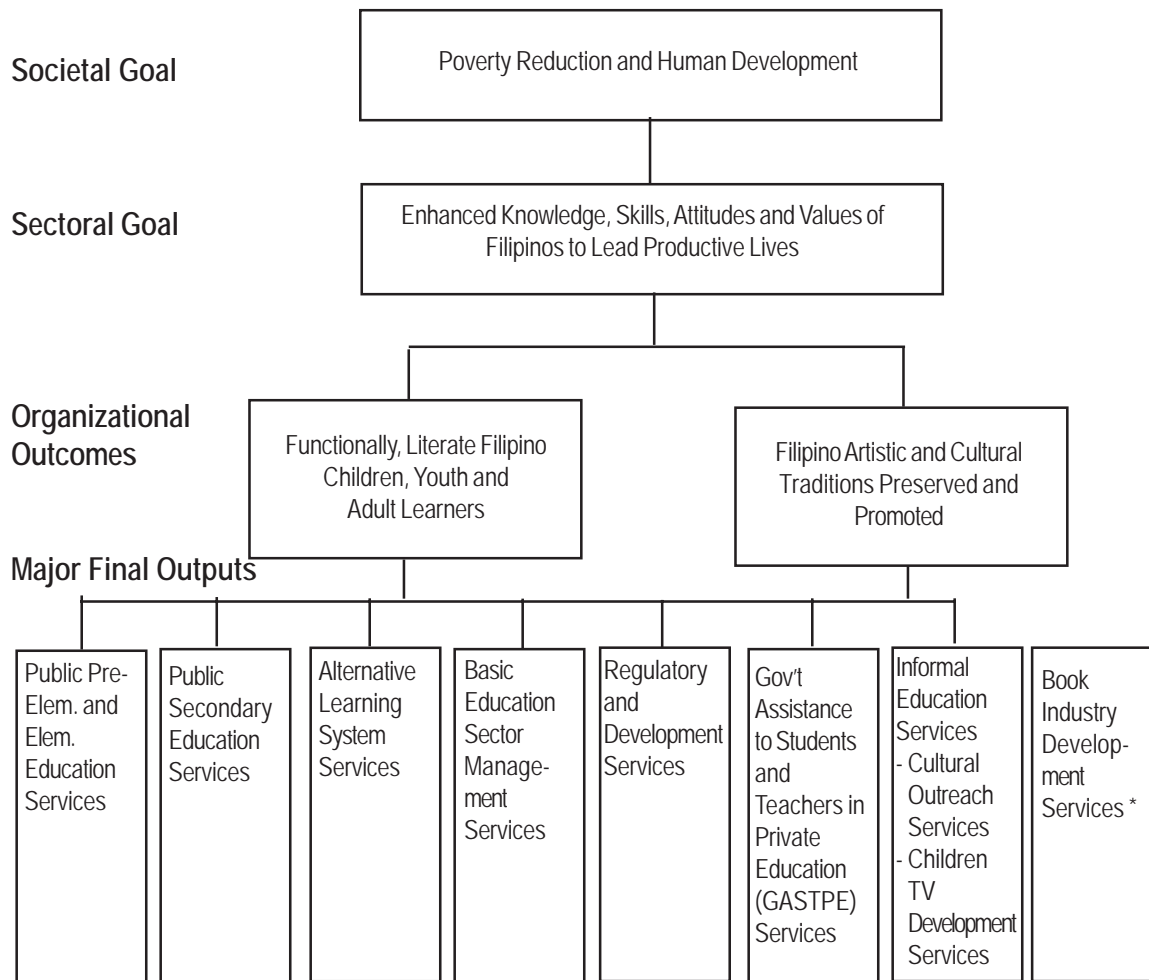
Legal Basis

- **Educational Decree of 1863** (December 20, 1863), as amended, established the Department of Education, Culture and Sports (DECS) as the Superior Commission of Primary Instruction under a Chairman.
- **Act No. 74** (January 21, 1901) transformed the Commission into the Department of Instruction under a General Superintendent (until 1916), a Secretary (until 1944).
- **Executive Order No. 94** (October 1947), Reorganization Act of 1947, established the Department of Education from the Commonwealth-renamed Department of Instruction.
- **Presidential Decree No. 1397** (June 2, 1978) transformed the Department of Education and Culture established under Proclamation No. 1081 (s. 1972) into the Ministry of Education and Culture (MEC) which the Education Act of 1982 reorganized to Ministry of Education, Culture and Sports (MECS).
- **Executive Order No. 117** (January 30, 1987) reorganized the MECS into the Department of Education, Culture and Sports (DECS).
- **Republic Act No. 7722** (May 18, 1994) and **Republic Act No. 7796** (August 23, 1994) created the Commission on Higher Education (CHED) and the Technical Education and Skills Development Authority (TESDA), respectively, giving rise to a trifocalized education system which refocused DECS' mandate to basic education covering pre-school, elementary and secondary, and non-formal education.
- **Republic Act No. 9155** (August 11, 2001), otherwise known as Governance of Basic Education Act of 2001, renamed the DECS to the Department of Education (DepED), redefined its role and that of its field offices, and reiterated the goal of basic education.

Mandate

The Department of Education (DepEd) formulates, implements, and coordinates policies, plans, programs and projects in the areas of formal and non-formal basic education. It supervises all elementary and secondary education institutions, including alternative learning systems, both public and private; and provides for the establishment and maintenance of a complete, adequate, and integrated system of basic education relevant to the goals of national development.

LOGICAL FRAMEWORK (DepEd)



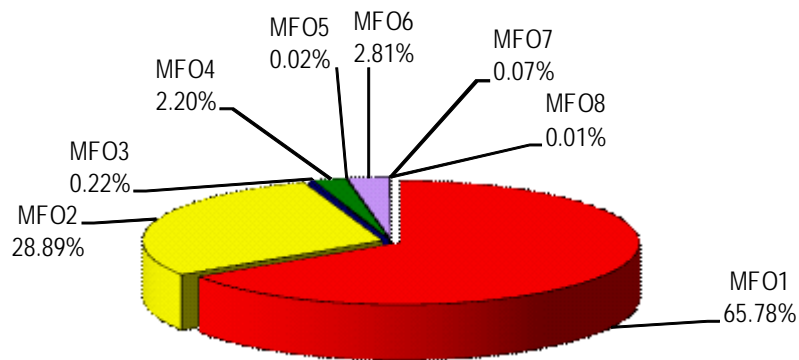
* This is an MFO of the National Book Development Board (NBDB), an attached agency of the DepEd, and does not contribute directly to the attainment of DepEd's organizational outcomes. Initial recommendation is for the NBDB to be attached to the Department of Trade and Industry (DTI) since its mandate is to develop and promote the local publishing industry.

FY 2011 MFO BUDGET

By MFO/By Expense Class (In Thousand Pesos)

Particulars	PS	MOOE	CO	TOTAL	% Share
MFO 1 Public Pre-Elem. and Elementary Education Services	115,528,561	10,281,048	10,529,416	136,339,025	65.78%
MFO 2 Public Secondary Education Services	48,907,446	5,906,552	5,064,145	59,878,143	28.89%
MFO 3 Alternative Learning System Services	17,595	439,622	-	457,217	0.22%
MFO 4 Basic Education Sector Management Services	910,133	2,619,754	1,037,096	4,566,983	2.20%
MFO 5 Regulatory and Development Services	-	28,350	-	28,350	0.02%
MFO 6 Gov't Assistance to Students & Teachers in Private Education (GASTPE) Services	-	5,829,884	-	5,829,884	2.81%
MFO 7 Informal Education Services	73,283	63,686	12,580	149,549	0.07%
MFO 8 Book Industry Development Services	10,600	11,267	-	21,867	0.01%
TOTAL	165,447,618	25,180,163	16,643,237	207,271,018	100%
% Share	79.82%	12.15%	8.03%	100%	

By MFO (Total Budget = P207,271,018,000)*



* Includes DepEd - Educational Facilities Fund

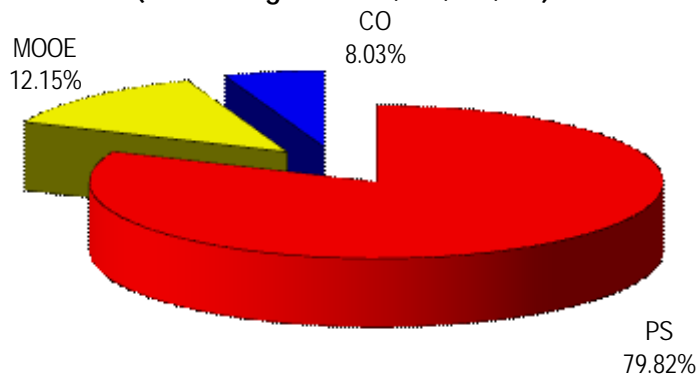
By Agency/By MFO
(In Thousand Pesos)

Particulars	MFO 1	MFO 2	MFO 3	MFO 4	MFO 5	MFO 6	MFO 7	MFO 8	Total	% Share
	Public Pre- Elem and Elem. Educ. Services	Public Secondary Education Services	Alternative Learning System Services	Basic Education Sector Management Services	Regulatory and Dev't Services	GASTPE Services	Informal Education Services	Book Industry Development Services		
National Book Development Board								21,867	21,867	0.011%
National Council for Children's Television							6,343		6,343	0.003%
National Museum							138,328		138,328	0.067%
Philippine High School for the Arts		42,407					4,878		47,285	0.023%
DepEd - OSEC	136,339,025	59,835,736	457,217	4,566,983	28,350	5,829,884	-	-	207,057,195	99.896%
TOTAL	136,339,025	59,878,143	457,217	4,566,983	28,350	5,829,884	149,549	21,867	207,271,018	100%
% Share	65.78%	28.89%	0.22%	2.20%	0.02%	2.81%	0.07%	0.01%	100.00%	

By Agency/By Expense Class
(In Thousand Pesos)

Particulars	PS	MOOE	CO	TOTAL	% SHARE
National Book Development Board	10,600	11,267	-	21,867	0.011%
National Council for Children's Television	1,766	4,477	100	6,343	0.003%
National Museum	68,766	57,082	12,480	138,328	0.067%
Philippine High School for the Arts	13,145	33,632	508	47,285	0.023%
DepEd-OSEC	165,353,341	25,073,705	16,630,149	207,057,195	99.897%
TOTAL	165,447,618	25,180,163	16,643,237	207,271,018	100.000%
% SHARE	79.82%	12.15%	8.03%	100.00%	

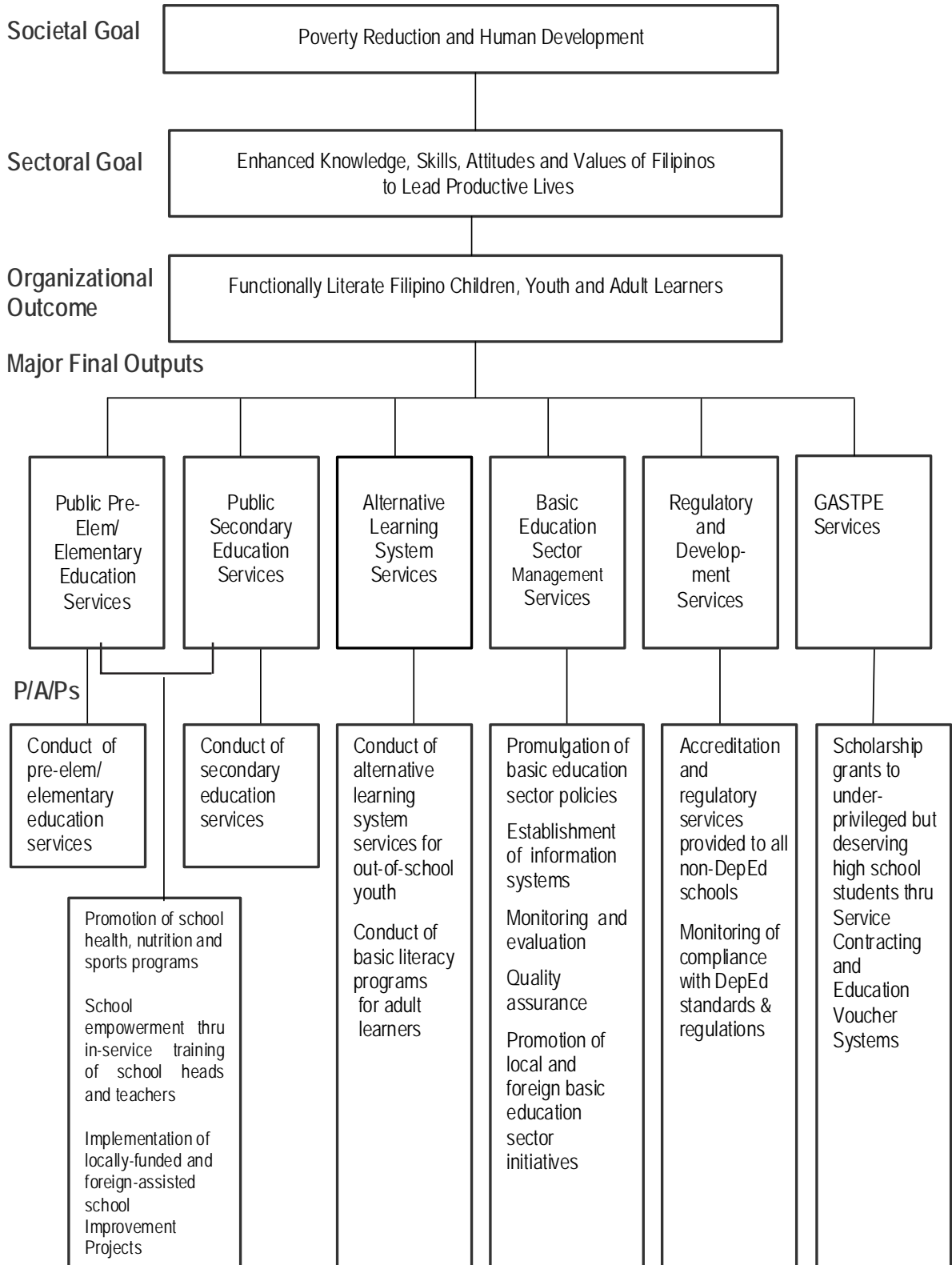
By Expense Class
(Total Budget = P207,271,018,000)*



* Includes DepEd - Educational Facilities Fund

DepEd-Office of the Secretary

LOGICAL FRAMEWORK (DepEd-OSEC)



PERFORMANCE MEASURES AND TARGETS
(Amounts in Thousand Pesos)

Particulars	FY 2009	FY 2010	FY 2011
	Actual/ Amount	Target/ Amount	Target/ Amount
MFO 1			
Public Pre-Elementary and Elementary Education Services	100,393,123	115,079,554	136,339,025
<u>Public Pre-Elementary Education Services</u>			
Enrolment in DepEd & DepEd-contracted pre-schools	1,551,554	1,580,000	1,352,250
No. of public pre-school completers	1,472,134	1,472,500	1,352,250
No. of public pre-school children who passed Grade 1 (G1) readiness test administered	639,871	740,816	811,350
% of underweight pre-school children	14.07%	13.00%	13.00%
<u>Public Elementary Education Services</u>			
Enrolment in public elementary schools	12,788,197	13,607,517	14,251,587
Participation rate	76.65%	79.65%	81.65%
Completion rate	70.84%	72.76%	74.76%
Percent of Grade 3 (G3) effective readers (instructional level) to the total G3 enrollees			
English	61.91%	64.91%	67.91%
Filipino	63.92%	68.92%	73.92%
Mean Percentage Scores in National Achievement Test (NAT) of Grade 6 (G6) in public schools			
Total Test	69.21	71.21	73.21
English	68.51	70.51	72.51
Science	64.24	66.24	68.24
Math	65.15	67.15	69.15
Filipino	75.50	77.50	79.50
HeKaSi	72.67	74.67	76.67
% of underweight children to the total no. of G1-G6 enrollees	15.26%	16.00%	16.00%
MFO 2			
Public Secondary Education Services	44,386,793	51,132,003	59,835,736
Enrolment in public secondary schools	5,415,498	5,600,228	5,849,003
Participation rate	46.82%	50.00%	52.00%
Completion rate	71.46% *	78.46%	80.46%
MPS in NAT of Year II (Y-II) students in public secondary schools			
Total Test	46.38	50.80	55.60
English	46.86	55.00	57.00
Science	45.36	46.00	48.00
Math	41.23	43.00	48.00
Filipino	58.18	60.00	65.00
Araling Panlipunan	40.25	50.00	60.00
MPS in National Career Assessment Exam (NCAE) of Year IV (Y-IV) students in public secondary schools			
Gen. Scholastic Aptitude	40.86	50.00	50.00
Tech. Voc. Aptitude	66.97	60.00	68.00
Non-Verbal Ability	NYA	50.00	54.00
Entrepreneurial Skills	59.06	80.00	89.00

Particulars	FY 2009	FY 2010	FY 2011
	Actual/ Amount	Target/ Amount	Target/ Amount
MFO 3			
Alternative Learning System (ALS) Services	173,823	468,627	457,217
• Ratio of completers to total no. of learners in DepEd-delivered ALS programs	75:100	75:100	75:100
• Ratio of completers to total no. of learners in DepEd-procured ALS programs	75:100	75:100	75:100
• Ratio of test passers to total no. of test takers of Accreditation and Equivalency (A & E) Test	21:100	22:100	22:100
MFO 4			
Basic Education Sector Management Services	29,937,181	4,095,879	4,566,983
• No. of policies to be reviewed, assessed and formulated for the current year			16
• % of basic education sector policies and standards adopted by Teacher Education Council (TEC), TESDA, CHED, PRC and Civil Service Commission to total no. of policies formulated	50.00%	60.00%	65.00%
MFO 5			
Regulatory and Development Services	838	27,700	28,350
• Ratio of private elementary schools with permit to operate to the total number of private elementary schools	76:100		
MFO 6			
Government Assistance to Students and Teachers in Private Education (GASTPE) Services	3,954,758	3,939,560	5,829,884
• Ratio of Education Service Contracting (ESC) completers to ESC grantees			25:25
• Ratio of Education Voucher System (EVS) completers to EVS grantees			25:25
• MPS in NCAE			
ESC grantees	41.80	43.00	45
EVS grantees	40.69	42.00	43
TOTAL	178,846,516	174,743,323	207,057,195
	1/		

Note: * Data for Completion Rate for Public Secondary Education includes SUCs data

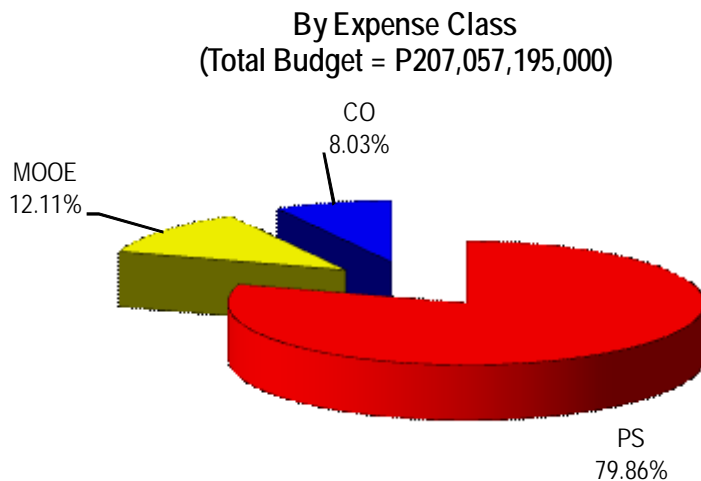
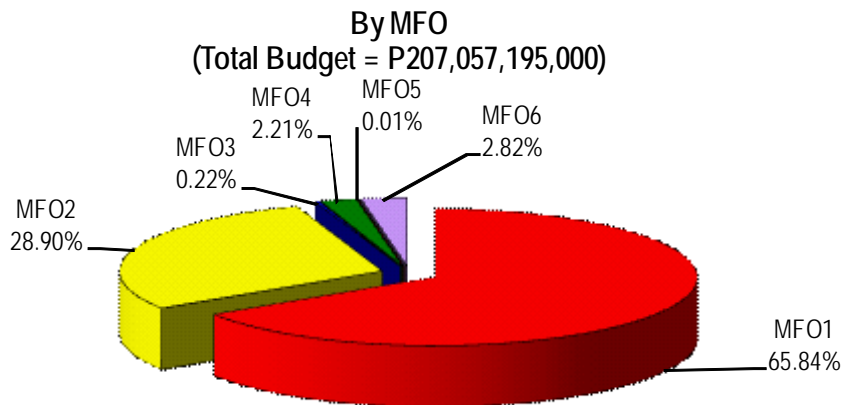
^{1/} includes DepEd - RO XII obligations which were not considered in the NEP due to their non-availability during the budget preparation.

FY 2011 MFO BUDGET

By MFO/By Expense Class (In Thousand Pesos)

Particulars	PS	MOOE	CO	TOTAL	% Share
MFO 1 Public Pre-Elem. and Elementary Education Services	115,528,561	10,281,048	10,529,416	136,339,025	65.84%
MFO 2 Public Secondary Education Services	48,897,052	5,875,047	5,063,637	59,835,736	28.90%
MFO 3 Alternative Learning System Services	17,595	439,622	-	457,217	0.22%
MFO 4 Basic Education Sector Management Services	910,133	2,619,754	1,037,096	4,566,983	2.21%
MFO 5 Regulatory and Development Services	-	28,350	-	28,350	0.01%
MFO 6 GASTPE Services	-	5,829,884	-	5,829,884	2.82%
TOTAL	165,353,341	25,073,705	16,630,149	207,057,195 *	100.00%
% Share	79.86%	12.11%	8.03%	100.00%	

* Including Special Purpose Fund-DepEd Educational Facilities Fund and RLIP





National Book Development Board

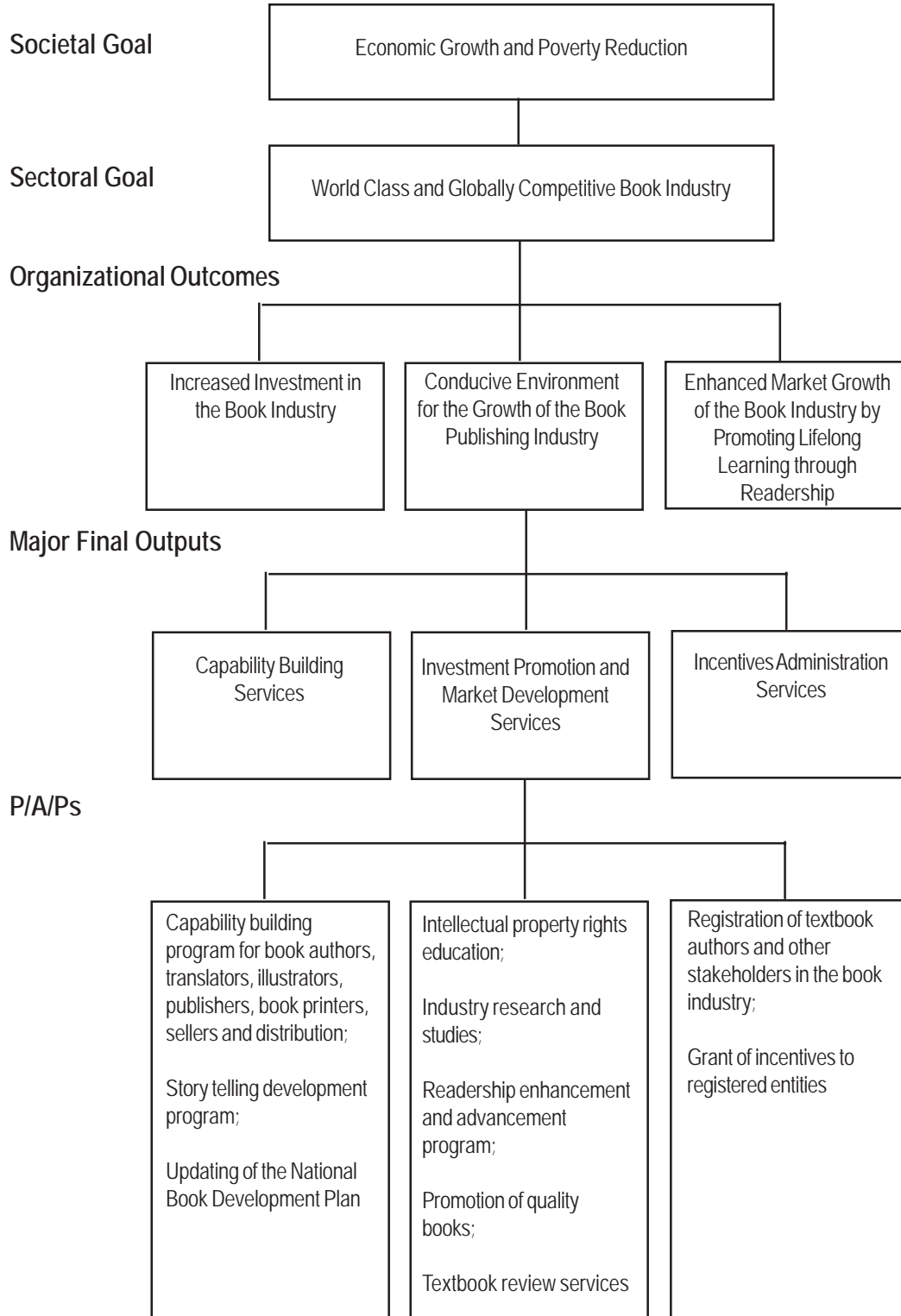
Legal Basis

Republic Act No. 8047 (June 7, 1995), Book Publishing Industry Development Act, created the National Book Development Board (NBDB); abolished the Instructional Materials Development Center (IMDC), an agency under the Department of Education, Culture and Sports (DECS), and paved the way for the full privatization of the DECS' Textbook Program.

Mandate

The National Book Development Board (NBDB) formulates, adopts and implements a National Book Policy and a corresponding National Book Development Plan that will serve as basis for fostering the progressive growth and viability of the book industry. It ensures an adequate supply of affordable, quality-produced books for the domestic export market.

LOGICAL FRAMEWORK (NBDB)



PERFORMANCE MEASURES AND TARGETS
(Amounts in Thousand Pesos)

Particulars	FY 2009	FY 2010	FY 2011
	Actual/ Amount	Target/ Amount	Target/ Amount
MFO 1	5,726	2,522	4,264
Capability Building Services			
Seminars on the latest printing/publishing technologies			
Number of seminars/ training courses conducted	5	2	2
Number of participants to seminars/training courses	58	30	30
Seminars for Authors, Translators, Illustrators, Publishers, Book Printers, Sellers and Distributors			
Number of seminars/ training courses conducted	2	2	2
Number of participants to seminars/training courses	167	30	30
Storytelling Skills Development Program			
Number of seminars/ training courses conducted	8	5	5
Number of participants to seminars/training courses	90	30	30
Updating/Rewriting of the National Book Development Plan 2010-1012			
Number of consultations conducted	1	1	1
Number of sectors which participated	12	9	9
MFO 2	11,547	9,321	13,251
Investment Promotion and Market Development Services			
Intellectual property rights education for industry stakeholders			
Number of seminars on Intellectual Property Rights	3	9	9
Number of participants	60	50	50
Conduct of Philippine Book Development Month through book festival, lecture, workshop, literary performances, contests and other events			
Number of activities/events conducted	7	6	6
Number of participants per activity	60	40	40
Readership development program			
a) Conduct of book club sessions			
Number of book clubs sessions conducted	8	12	12

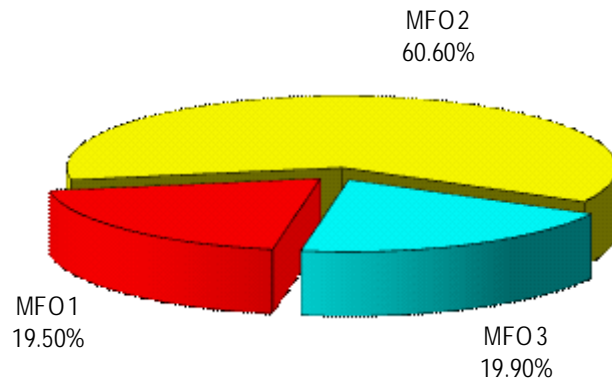
Particulars	2009	2010	2011
	Actual/ Amount	Target/ Amount	Target/ Amount
b) Readership Enhancement and Advancement (READ) program			
Number of READ programs conducted	9	5	5
Number of participants in the READ program	90	40	40
c) Get Caught Reading (GCR) campaign			
Number of endorsement	7	2	2
Number of media exposure	2	2	2
d) Tulaan sa Tren (Train of Thought)			
Number of promotional materials produced	3,360	2,000	
Number of endorsements	11	10	
Promotion of quality books thru:			
a) Conduct of Quality Seal Awards (QSA) for textbooks			
Number of private textbooks given QSA	2	2	2
Number of entrees evaluated	25	10	10
Percentage of books nominated for QSA process	100%	100%	100%
b) Administration of National Book Awards (NBA)			
Number of NBA winners	1 per category	1 per category	1 per category
c) National textbook review services			
Number of private textbook titles evaluated	0	300	300
d) Administration of the National Children's Book Awards			
Number of winners		10	10
Number of titles submitted for evaluation		100	100
MFO 3	3,803	9,751	4,352
Incentive Administration Services			
Registration of authors and other stakeholders in the book industry with the NBDB			
Percentage increase in no. of registered entities	10%	15%	15%
Grant of incentives to registered entities			
Percentage of requests acted upon vs. total application for tax incentives	100%	100%	100%
Total	21,076	21,594	21,867

FY 2011 MFO BUDGET

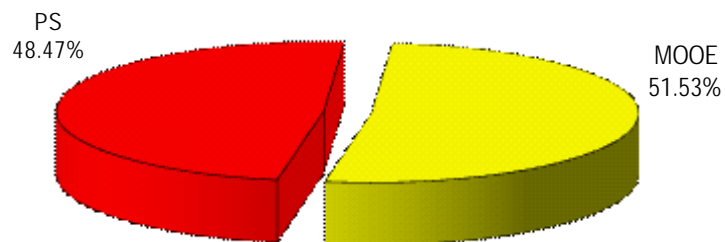
By MFO/By Expense Class (In Thousand Pesos)

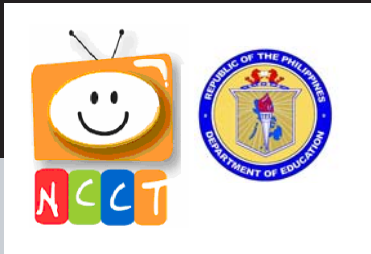
Particular	PS	MOOE	CO	Total	% Share
MFO 1 Capability Building Services	2,438	1,826	0	4,264	19.50%
MFO 2 Investment Promotion and Market Development Services	4,664	8,587	0	13,251	60.60%
MFO 3 Incentive Administration Services	3,498	854	0	4,352	19.90%
TOTAL	10,600	11,267	0	21,867	100.00%
% Share	48.47%	51.53%	0.00%	100.00%	

By MFO
(Total Budget = P21,867,000)



By Expense Class
(Total Budget = P21,867,000)





National Council for Children's Television

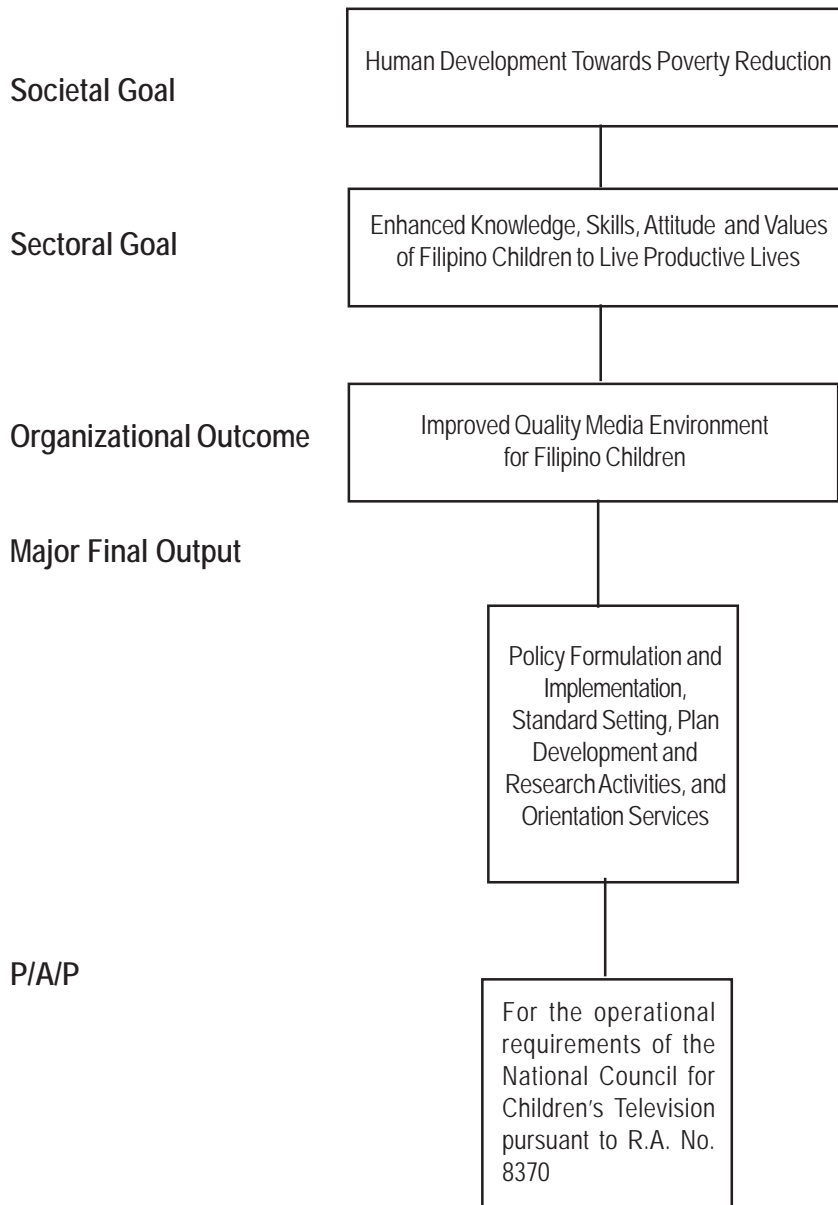
Legal Basis

- **Republic Act No. 8370** (July 28, 1997), the Children's Television Act of 1997, created the National Council for Children's Television as an attached agency to the Office of the President.
- **Executive Order No. 203** (May 5, 2003) transferred the National Council for Children's Television from the Office of the President to the Department of Education.

Mandate

The National Council for Children's Television (NCCT) develops a comprehensive media plan that initiates, promotes, and supports quality television programs to develop the Filipino child's critical thinking and communication skills, moral values, and strong sense of national identity. It aims to ensure that all children in the Philippines will have access to quality television programs that are creative, informative, educational and entertaining wherever they are and in whatever circumstance they are in.

LOGICAL FRAMEWORK (NCCT)



PERFORMANCE MEASURES AND TARGETS
(Amounts in Thousand Pesos)

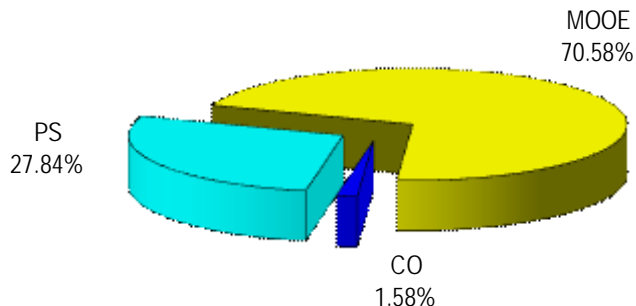
Particulars	FY 2009	FY 2010	FY 2011
	Actual/Amount	Target/Amount	Target/Amount
MFO 1			
Policy Formulation and Implementation, Standard Setting, Plan Development and Research Activities and Orientation Services	7,869	14,805	6,343
No. of policies formulated	0	0	1
No. of workshops conducted	26	33	26
No. of conferences conducted	4	2	5
No. of advocacy collateral produced			
No. of newsletter published	2	4	4
No. of website hits	1600	1800	2000
No. of infomercial airing		200	300
No. of IEC materials published and disseminated		3	4
TOTAL	7,869	14,805	6,343

FY 2011 MFO Budget

By MFO/By Expense Class
(In Thousand Pesos)

Particular	PS	MOOE	CO	Total	% Share
MFO 1					
Policy Formulation and Implementation, Standard Setting, Plan Development and Research Activities and Orientation Services	1,766	4,477	100	6,343	100.00%
TOTAL	1,766	4,477	100	6,343	100.00%
% Share	27.84%	70.58%	1.58%	100.00%	

By Expense Class
(Total Budget = P 6,343,000)





National Museum

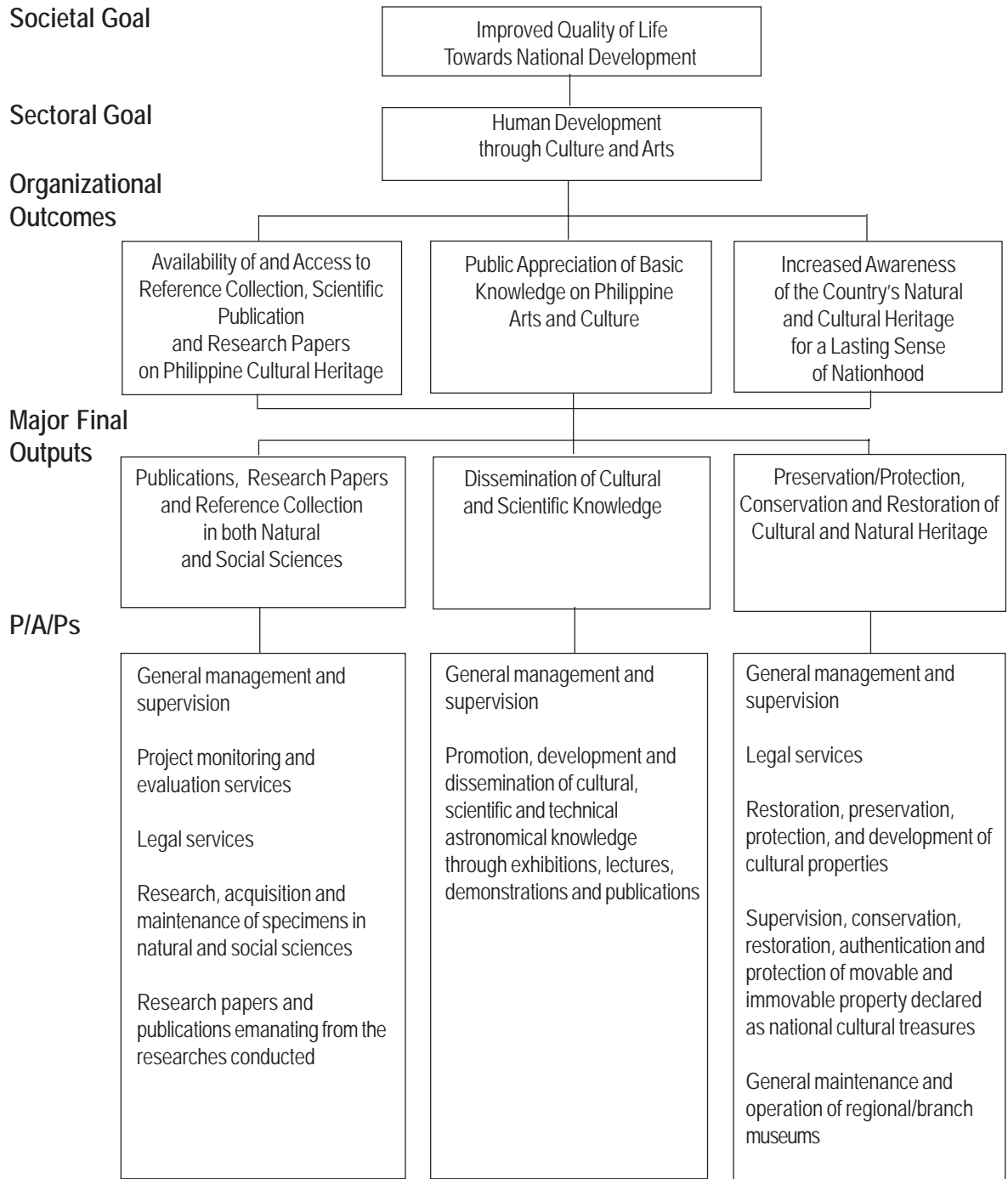
Legal Basis

Republic Act No. 8492 (February 12, 1998) established the National Museum as an educational and a scientific institution as well as a cultural center.

Mandate

The National Museum (NM) takes the lead in disseminating knowledge of Filipino cultural and historical heritage and in developing a corps of professionals knowledgeable about the preservation, enrichment, and dynamic evaluation of the Filipino national culture. It conducts basic and systematic research programs combining integrated laboratory and field work in anthropology and archaeology, geology and paleontology, botany and zoology, and maintains reference collection on these disciplines to promote scientific development in the Philippines. It also studies and preserves the nation's rich artistic and cultural heritage in the reconstruction and rebuilding of its past and in the development of the national cultural wealth.

LOGICAL FRAMEWORK (NM)



PERFORMANCE MEASURES AND TARGETS
(Amounts in Thousand Pesos)

Particulars	FY 2009 Amoun/Actual	FY 2010 Amount/Target	FY 2011 Amount/Target
MFO 1	42,085	42,261	44,641
Publications, research papers and reference collection in both natural and social sciences			
Number of research projects conducted	164	172	177
Number of zoological, botanical, geological specimen acquired, processed, identified, illustrated, documented and maintained	264,989	294,312	272,939
Number of archeological and ethnological specimens acquired, processed, identified, illustrated, documented and maintained	118,732	98,066	122,294
Number of artifacts conserved and restored	1,427	1,831	1,102
Number of underwater and terrestrial archeological excavations, exploration conducted	26	33	27
Number of publications and research papers prepared	164	135	177
MFO 2	21,139	21,880	21,671
Dissemination of cultural and scientific knowledge			
Number of exhibits conducted (exhibits in Museum of the Filipino People)	15	80	62
Number of visitors / viewers of exhibits (exhibits in Museum of the Filipino People)	481,667	484,436	372,087
Number of attendees of museology trainings, lectures, seminars / workshops organized	1,181	1,178	912
Number of scientific / technical papers, popular/ promotional instructional materials prepared for publications and promotions	1,899	1,680	1,467
Number of astronomical shows demonstrated (Planetarium Bldg. and Mobile Planetarium)	51	300	103

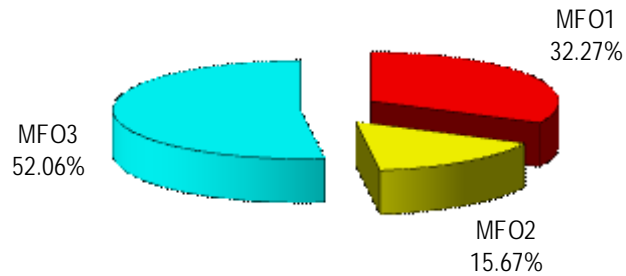
Particulars	FY 2009	FY 2010	FY 2011
	Actual/Amount	Target/Amount	Target/Amount
MFO 3	67,938	62,950	72,016
Preservation / protection, conservation and restoration of cultural and natural heritage			
Number of cultural properties authenticated/ registered and identified	1,589	1,500	1,228
Number of licenses and permits issued	304	600	235
Number of artworks acquired, identified, authenticated, exhibited, illustrated and maintained	3,767	3,930	3,880
Number of immovable cultural properties / world heritage sites conserved, restored preserved and developed	5	7	6
Number of Regional Museums maintained and developed			
Regional/Branch Museum	15	15	14
Museum Site	4	4	4
Total	131,162	127,091	138,328

FY 2011 MFO Budget

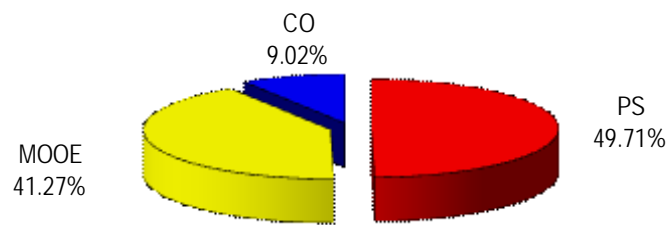
By MFO/By Expense Class
(In Thousand Pesos)

Particulars	PS	MOOE	CO	Total	% Share
MFO 1 Publications, research papers and reference collection in both natural and social sciences	28,832	15,809	-	44,641	32.27%
MFO 2 Dissemination of cultural and scientific knowledge	10,682	10,609	380	21,671	15.67%
MFO 3 Preservation / protection, conservation and restoration of cultural and natural heritage	29,252	30,664	12,100	72,016	52.06%
TOTAL	68,766	57,082	12,480	138,328	100.00%
% Share	49.71%	41.27%	9.02%	100.00%	

By MFO
(Total Budget = P138,328,000)



BY Expense Class
(Total Budget = P138,328,000)





Philippine High School for the Arts

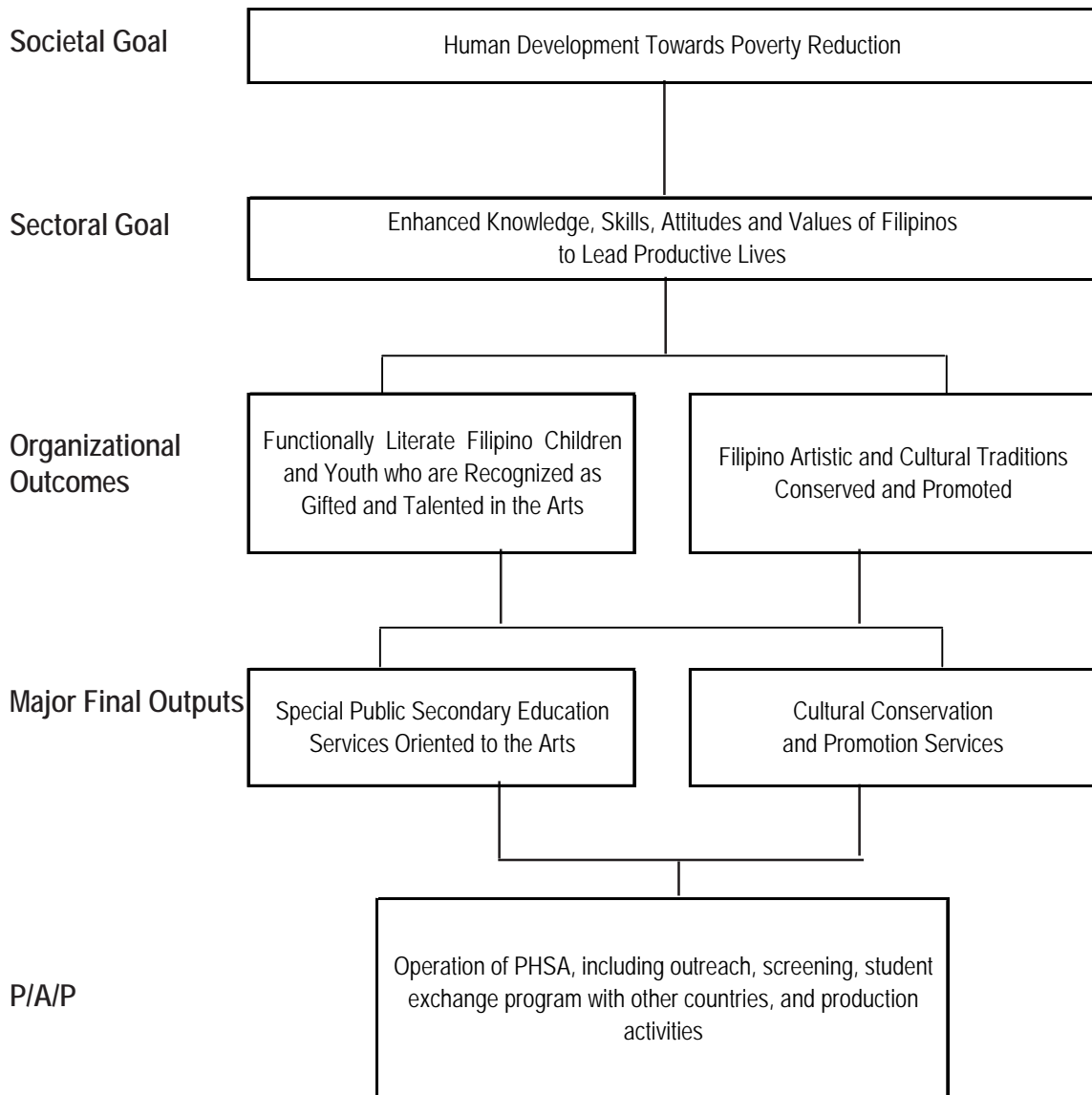
Legal Basis

- **Presidential Decree No. 1287** (January 20, 1978) formally established the Philippine High School for the Arts (PHSA) which was created as a special school on June 11, 1977.
- **Executive Order No. 420** (September 7, 1990) converted the PHSA into a regular government agency attached to the Department of Education.

Mandate

The Philippine High School for the Arts (PHSA) implements a general secondary level program, combined with a special curriculum oriented to the arts and geared to the early recognition and development of highly talented, exceptionally gifted students in the arts, thus providing a continuing source of artists of excellence and leaders in the preservation and promotion of Filipino heritage in the arts.

LOGICAL FRAMEWORK (PHSA)



PERFORMANCE MEASURES AND TARGETS
(Amounts in Thousand Pesos)

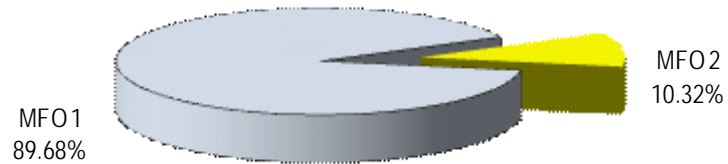
Particulars	2009	2010	2011
	Actual/ Amount	Target/ Amount	Target/ Amount
MFO 1			
Special Public Secondary Education Services Oriented to the Arts	35,741	47,713	42,407
Number of applicants received for assessment	901	1,100	1,100
Number of applicants screened and identified for scholarship	53	50	32
Mean percentage performance in Center for Educational Measurement across levels	86%	85%	85%
Mean percentage score in the National Achievement Test (NAT)	55%	61%	61%
Mean percentage Score in the National Career Assessment Exam (NCAE)	95%	90%	90%
MFO 2			
Cultural Conservation and Promotion Services	11,339	10,991	4,878
Number of research-based artworks published, staged, and/or exhibited	17	20	25
Number of schools assisted in initiating own and/or maintaining existing Special Arts Program	10	10	10
Number of persons attending cultural activities	5,079	5,300	6,000
Outside PHSA Within PHSA			
Total	47,080	58,704	47,285

FY 2011 MFO BUDGET

By MFO/By Expense Class (In Thousand Pesos)

Particulars	PS	MOOE	CO	TOTAL	% Share
MFO 1 Special public secondary education services oriented to the arts	10,394	31,505	508	42,407	89.68%
MFO 2 Cultural conservation and promotion services	2,751	2,127	-	4,878	10.32%
TOTAL	13,145	33,632	508	47,285	100.00%
% Share	27.80%	71.13%	1.07%	100.00%	

By MFO
(Total Budget = P47,285,000)



By Expense Class
(Total Budget=P47,285,000)

