



PHILIPPINE SPORTS COMMISSION

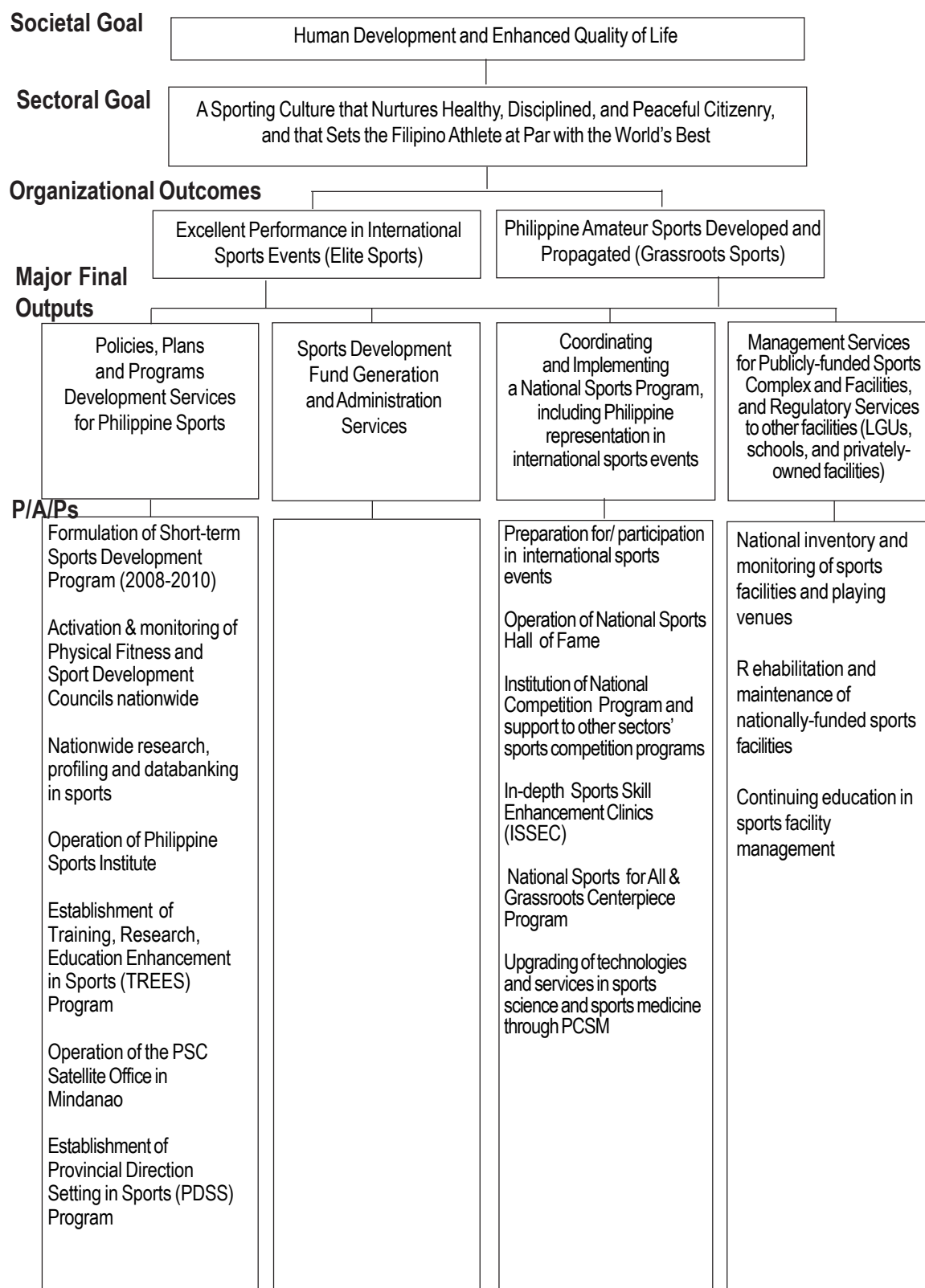
Legal Basis

Republic Act No. 6847 (January 24, 1990) created the Philippine Sports Commission as a regulatory national agency with the responsibility of coordinating all amateur sports development programs and institutions in the Philippines and formulating policies on said programs/institutions.

Mandate

The Philippine Sports Commission (PSC) provides leadership, formulates policies, and sets priorities and direction for all amateur sports promotion and development, particularly giving emphasis on grassroots participation.

LOGICAL FRAMEWORK (PSC)



PERFORMANCE MEASURES AND TARGETS

(Amounts in Thousand Pesos)

Particulars	FY 2008	FY 2009	FY 2010
	Amount/ Actual	Amount/ Target	Amount/ Target
MFO 1			
Policies, Plans and Programs Development			
Services for Philippine Sports	43,766	39,475	38,620
Formulation of Short-term Sports Development Plan (2008-2010)			
Status of Plan implementation & monitoring system	NEDA approved	40% implemented	50% implemented
Activation and monitoring of Physical Fitness and Sports Development Council nationwide			
% of LGUs with organized PFDSCs	deferred	deferred	30% of major LGUs reactivated
Nationwide research, profiling and data banking in sports			
% of data collected	20%	30%	40%
Operation of the Phil. Sports Institute			
Status of Operation	PSI Activated	PSI Operational	PSI Operational
Establishment of Training, Research, Education Enhancement in Sports (TREES) program for various sports discipline			
No. of summits, conventions, seminars, consultations and congress	15	30	deferred
No. of beneficiaries	4,000	15,000	deferred
No. of bilateral cooperation agreements signed	3	4	5
No. of international sports studies, researches and collaborations, thru International Sports Mission for Academic Research and Training (I-SMART)	8	4	4
Establishment of Provincial Direction Setting in Sports (PDSS) Program			
No. of LGUs assisted	6	5	8
MFO 2			
Sports Development Fund Generation and Administration Services	1,400	1,500	1,600
Institution of TWG to validate and monitor contributions to NSDF			
% Increase in NSDF collections	45%	50%	50%
Sponsorship, partnership, promotion and marketing campaign to support or finance sports programs			
Amount of sponsorships raised	7,000	8,000	10,000
% Increase in NSDF collections	10%	30%	50%

PERFORMANCE MEASURES AND TARGETS
(Amounts in Thousand Pesos)

Particulars	FY 2008	FY 2009	FY 2010
	Amount/ Actual	Amount/ Target	Amount/ Target
MFO 3			
Coordinating and Implementing a National Sports Program, Including Phil. Representation in International Sports Events	140,064	141,785	129,258
Preparations for/participation in international sports events			
International sports events	none	n/a	n/a
No. of medals in 2010 Asian Games	n/a	n/a	10
No. of medals earned in various international competitions	27	35	65
Operation of National Sports Hall of Fame (operating on limited hours)			
No. of viewers	5,000	10,000	15,000
Institution of Grassroot-Level Recruitment, Enlistment and Training (GREAT) as a talent search scheme for junior athletes			
Number of athletes recruited who are medalists in the DepEd National Palara and other national in scope competitions	n/a	200	150
Number of coaches selected coming from different localities who handle medalists in the DepEd National Palara and other national in scope competitions	n/a	50	50
Number of athletes undergoing training under the National Grassroots Developmental Pool	n/a	70	60
Institution of Support Mechanism and Renewed Tie-ups (SMART) as a support system and tie-up program with the local government units and other prestigious sports organizations			
Number of national competition programs organized and managed by prestigious sports organizations financially & technically supported	n/a	6	4
Number of junior athletic talents identified who are capable of undergoing high-level training	n/a	70	70
Number of sports projects financially and technically supported which are organized and implemented by local government units	n/a	30	40
Institution of Public Awareness of Great Achievements Sports Awards (PAGASA) to recognize exemplary performance and achievements leading to international sports excellence		10 regular awards	10 regular awards
Number of PAGASA awards given to sports organizations, sports officials, athletes & coaches	n/a	5 special awards	5 special awards

PERFORMANCE MEASURES AND TARGETS
(Amounts in Thousand Pesos)

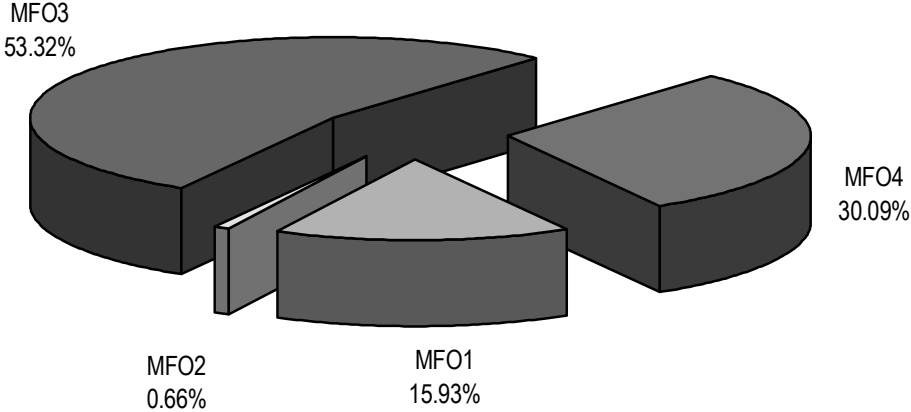
Particulars	FY 2008	FY 2009	FY 2010
	Amount/ Actual	Amount/ Target	Amount/ Target
MFO 4 Management Services for Publicly-Funded Sports Facilities; Regulatory Services to Other Facilities (LGUs, Schools, Privately-owned)	68,079	99,400	72,950
Conduct of national inventory and monitoring of local sports facilities and playing venues			
Status of inventory	70% complete	Completed	Revalidation of data
Rehabilitation and maintenance of sports/training facilities			
No. of facilities repaired/rehabilitated	5	6	6
Continuing education in sports facility management			
No. of sports practitioners trained	800	500	200
TOTAL	253,309	282,160	242,428
Fund 101	228,829	256,898	217,141
Fund 151	24,480	25,262	25,287

Not included are funds received from PAGCOR, PCSO, etc. which is a source of the National Sports Development Fund and is utilized for athlete training, incentives, and allowances. FY 2008 actual collection is P511,046M, FY 2009 estimated collection is (P497,240M), and FY 2010 estimated collection is (P516,600M).

FY 2010 MFO BUDGET
By MFO/By Expense Class
(In thousand pesos)

Particulars	PS	MOOE	CO	Total	% Share
MFO 1					
Policies, Plans and Programs Development Services for Philippine Sports	25,456	13,164	-	38,620	15.93%
MFO 2					
Sports Development Fund Generation and Administration Services	1,005	595	-	1,600	0.66%
MFO 3					
Coordinating and Implementing a National Sports Program, Including Phil. Representation in International Sports Events	6,883	122,375	-	129,258	53.32%
MFO 4					
Management Services for Publicly-funded Sports Facilities; Regulatory Services to Other Facilities (LGUs, schools, privately-owned)	1,537	7,413	64,000	72,950	30.09%
TOTAL	36,418	142,010	64,000	242,428	100%
% Share	15.02%	58.58%	26.40%	100%	

By MFO
(Total Budget = P242,428,000)



By Expense Class
(Total Budget = P242,428,000)

