



## Philippine High School for the Arts

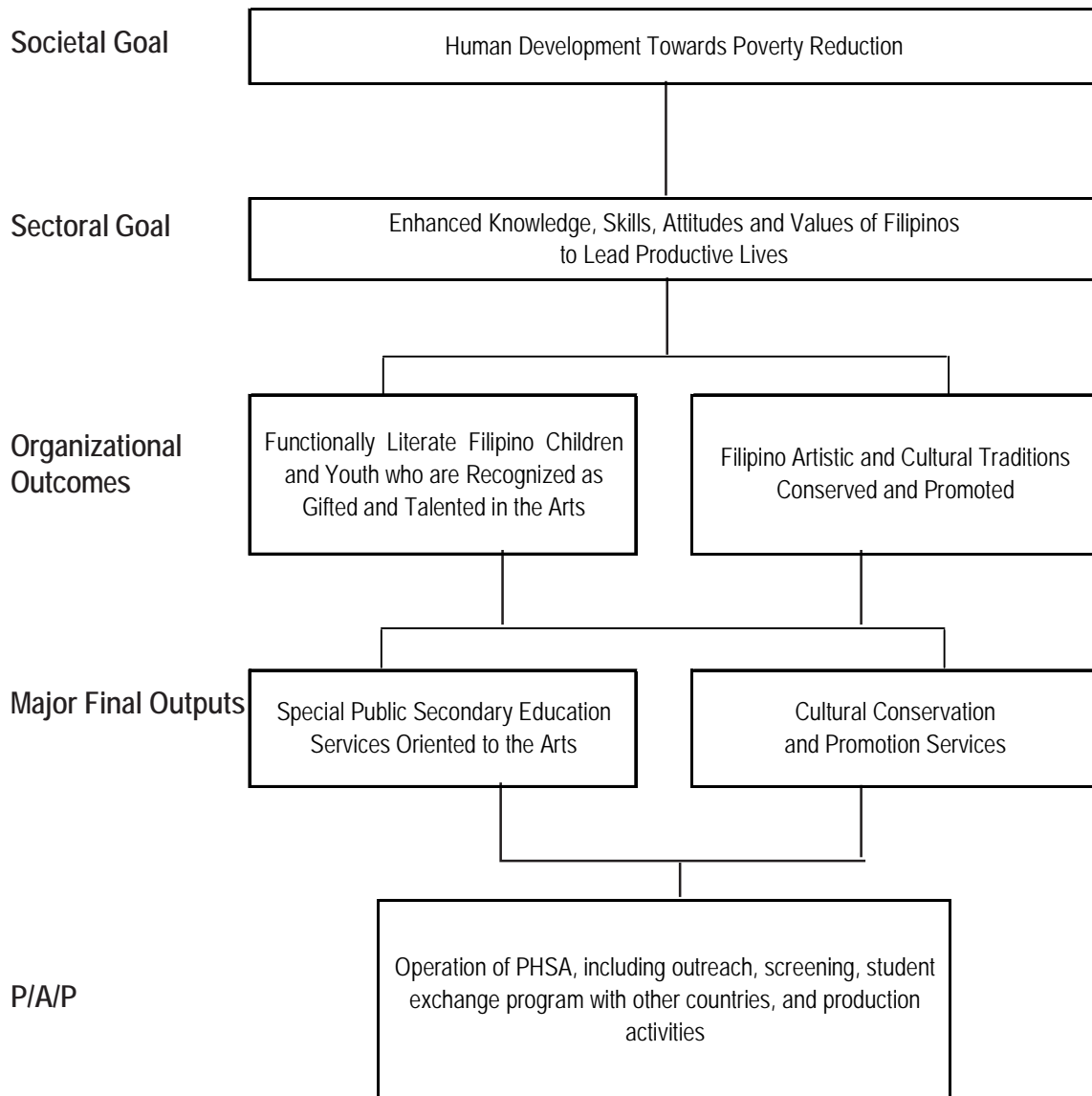
### Legal Basis

- **Presidential Decree No. 1287** (January 20, 1978) formally established the Philippine High School for the Arts (PHSA) which was created as a special school on June 11, 1977.
- **Executive Order No. 420** (September 7, 1990) converted the PHSA into a regular government agency attached to the Department of Education.

### Mandate

The Philippine High School for the Arts (PHSA) implements a general secondary level program, combined with a special curriculum oriented to the arts and geared to the early recognition and development of highly talented, exceptionally gifted students in the arts, thus providing a continuing source of artists of excellence and leaders in the preservation and promotion of Filipino heritage in the arts.

## LOGICAL FRAMEWORK (PHSA)



**PERFORMANCE MEASURES AND TARGETS**  
(Amounts in Thousand Pesos)

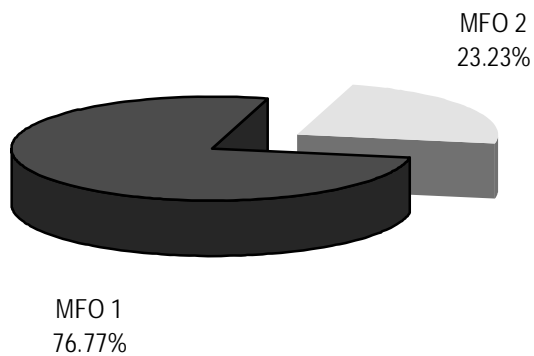
Particulars	2008	2009	2010
	Amount/ Actual	Amount/ Target	Amount/ Target
<b>MFO 1:</b>			
<b>Special Public Secondary Education Services Oriented to the Arts</b>	<b>34,177</b>	<b>36,504</b>	<b>35,669</b>
Number of applicants received for assessment	0	1,000	1,100
Number of applicants screened and identified for scholarship	37	40	40
Mean percentage performance in Center for Educational Measurement across levels	88%	85%	85%
Mean percentage score in the National Achievement Test (NAT)	61%	61%	61%
Mean percentage Score in the National Career Assessment Exam (NCAE)	95%	90%	90%
<b>MFO 2:</b>			
<b>Cultural Conservation and Promotion Services</b>	<b>9,111</b>	<b>10,891</b>	<b>10,791</b>
Number of research-based artworks published, staged, and/or exhibited	20	15	20
Number of schools assisted in initiating own and/or maintaining existing Special Arts Program	24	10	10
Number of persons attending cultural activities	5,255	2,000	4,800
Outside PHSA                      Within PHSA			
<b>Total</b>	<b>43,288</b>	<b>47,395</b>	<b>46,460</b>

## FY 2010 MFO BUDGET

### By MFO/By Expense Class (In thousand pesos)

Particulars	PS	MOOE	CO	TOTAL	% Share
<b>MFO 1 :</b> Special public secondary education services oriented to the arts	5,922	29,747	-	35,669	76.77%
<b>MFO 2 :</b> Cultural conservation and promotion services	5,739	5,052	-	10,791	23.23%
<b>TOTAL</b>	<b>11,661</b>	<b>34,799</b>	<b>0</b>	<b>46,460</b>	<b>100.00%</b>
<b>% Share</b>	<b>25.10%</b>	<b>74.90%</b>	<b>0.00%</b>	<b>100.00%</b>	

### By MFO (Total Budget = P46,460,000)



### By Expense Class (Total Budget=P46,460,000)

