



## DEPARTMENT OF EDUCATION

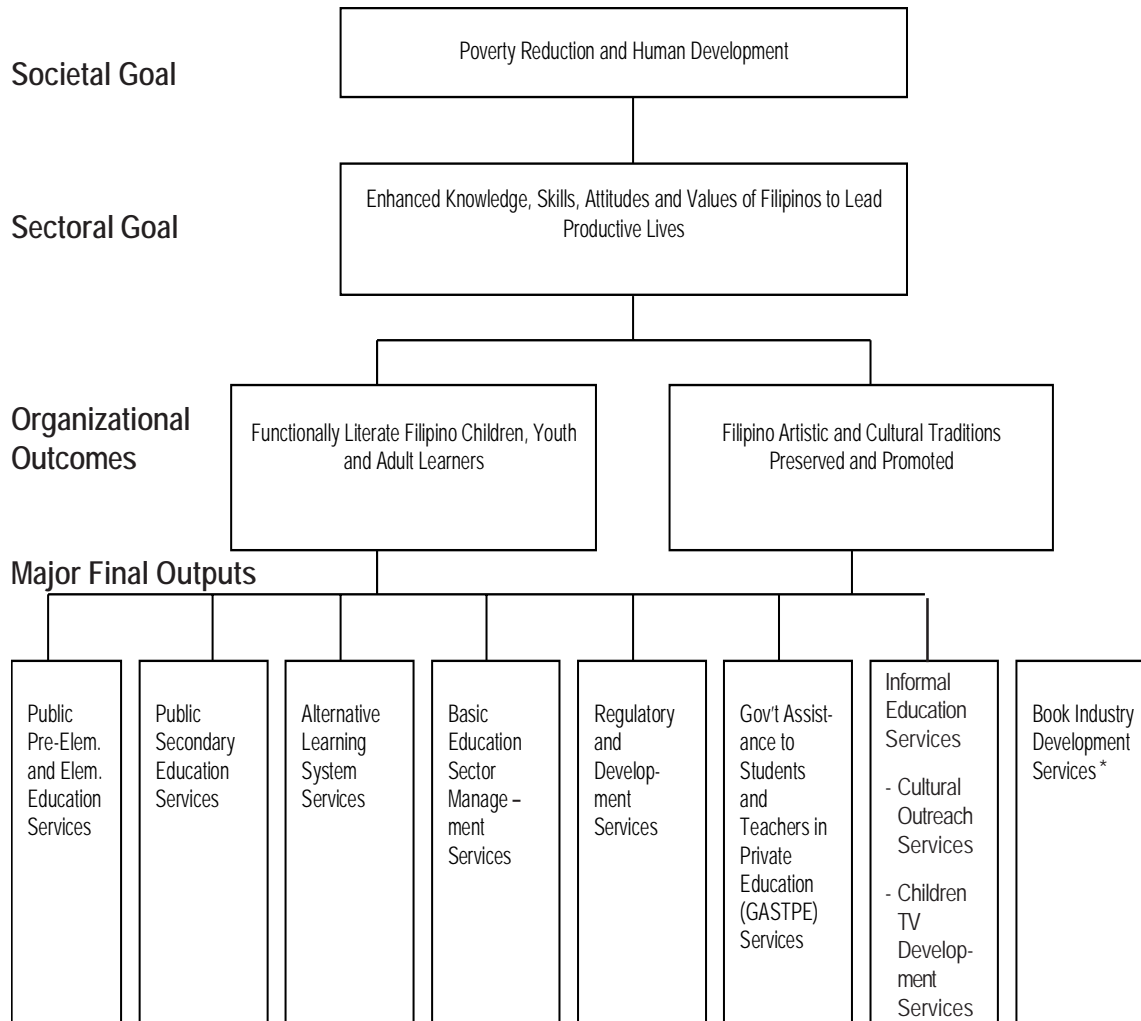
### Legal Basis

- **Educational Decree of 1863** (December 20, 1863), as amended, established the Department of Education [Culture and Sports (DECS)] as the Superior Commission of Primary Instruction under a Chairman.
- **Act No. 74** (January 21, 1901) transformed the Commission into the Department of Instruction under a General Superintendent (until 1916), a Secretary (until 1944).
- **Executive Order No. 94** (October 1947), Reorganization Act of 1947, established the Department of Education from the Commonwealth-renamed Department of Instruction.
- **Presidential Decree No. 1397** (June 2, 1978) transformed the Department of Education and Culture established under Proclamation No. 1081 (s. 1972) into the Ministry of Education and Culture (MEC) which the Education Act of 1982 reorganized to Ministry of Education, Culture and Sports (MECS).
- **Executive Order No. 117** (January 30, 1987) reorganized the MECS into the Department of Education, Culture and Sports (DECS).
- **Republic Act No. 7722** (May 18, 1994) and **Republic Act No. 7796** (August 23, 1994) created the Commission on Higher Education (CHED) and the Technical Education and Skills Development Authority (TESDA), respectively, giving rise to a trifocalized education system which refocused DECS' mandate to basic education covering pre-school, elementary and secondary, and non-formal education.
- **Republic Act No. 9155** (August 11, 2001), otherwise known as Governance of Basic Education Act of 2001, renamed the DECS to the Department of Education (DepED), redefined its role and that of its field offices, and reiterated the goal of basic education.

### Mandate

The Department of Education (DepEd) formulates, implements, and coordinates policies, plans, programs and projects in the areas of formal and non-formal basic education. It supervises all elementary and secondary education institutions, including alternative learning systems, both public and private; and provides for the establishment and maintenance of a complete, adequate, and integrated system of basic education relevant to the goals of national development.

## LOGICAL FRAMEWORK (DepEd)



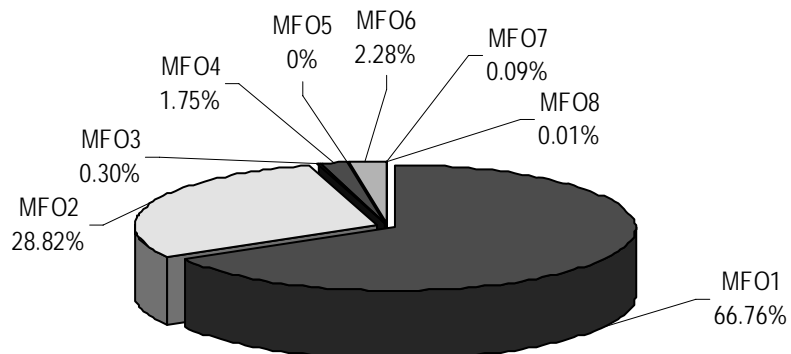
\* This is an MFO of the National Book Development Board (NBDB), an attached agency of the DepEd, and does not contribute directly to the attainment of DepEd's organizational outcomes. Initial recommendation is for the NBDB to be attached to the Department of Trade and Industry (DTI) since its mandate is to develop and promote the local publishing industry.

## FY 2010 MFO BUDGET

### By MFO/By Expense Class (In thousand pesos)

Particulars	PS	MOOE	CO	TOTAL	% Share
<b>MFO 1:</b> Public Pre-Elem. and Elementary Education Services	97,530,209	11,378,527	6,477,384	115,386,120	66.76%
<b>MFO 2:</b> Public Secondary Education Services	41,770,705	5,164,802	2,870,829	49,806,336	28.82%
<b>MFO 3:</b> Alternative Learning System Services	36,418	484,675	-	521,093	0.30%
<b>MFO 4:</b> Basic Education Sector Management Services	1,377,451	1,200,294	440,490	3,018,235	1.75%
<b>MFO 5:</b> Regulatory and Development Services	-	2,145	-	2,145	0.00%
<b>MFO 6:</b> Gov't Assistance to Students & Teachers in Private Education (GASTPE) Services	-	3,939,560	-	3,939,560	2.28%
<b>MFO 7:</b> Informal Education Services	69,374	78,273	-	147,647	0.09%
<b>MFO 8:</b> Book Industry Development Services	10,190	11,404	-	21,594	0.01%
<b>TOTAL</b>	<b>140,794,347</b>	<b>22,259,680</b>	<b>9,788,703</b>	<b>172,842,730</b>	<b>100.00%</b>
<b>% Share</b>	<b>81.46%</b>	<b>12.88%</b>	<b>5.66%</b>	<b>100.00%</b>	

### By MFO (Total Budget = P172,842,730,000)



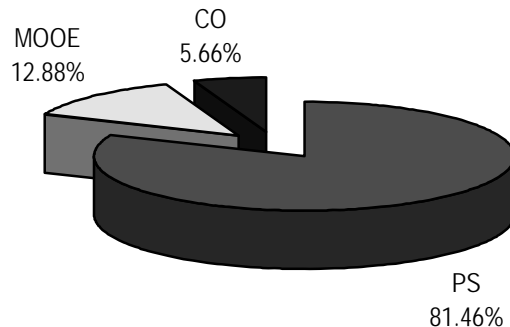
**By Agency/By MFO**  
(In thousand pesos)

Particulars	MFO 1	MFO 2	MFO 3	MFO 4	MFO 5	MFO 6	MFO 7	MFO 8	Total	% Share
	Public Pre- Elem. and Elem. Educ. Services	Public Secondary Education Services	Alternative Learning System Services	Basic Education Sector Management Services	Regulatory and Dev't Services	GASTPE Services	Informal Education Services	Book Industry Development Services		
National Book Development Board								21,594	21,594	0.016%
National Council for Children's Television							9,765		9,765	0.003%
National Museum							127,091		127,091	0.079%
Philippine High School for the Arts		35,669					10,791		46,460	0.030%
OSEC	115,386,120	49,770,667	521,093	3,018,235	2,145	3,939,560			172,637,820	99.872%
<b>TOTAL</b>	<b>115,386,120</b>	<b>49,806,336</b>	<b>521,093</b>	<b>3,018,235</b>	<b>2,145</b>	<b>3,939,560</b>	<b>147,647</b>	<b>21,594</b>	<b>172,842,730</b>	<b>100.000%</b>
<b>% Share</b>	<b>66.76%</b>	<b>28.82%</b>	<b>0.30%</b>	<b>1.75%</b>	<b>0.00%</b>	<b>2.28%</b>	<b>0.09%</b>	<b>0.01%</b>	<b>100.00%</b>	

**By Agency/By Expense Class**  
(In thousand pesos)

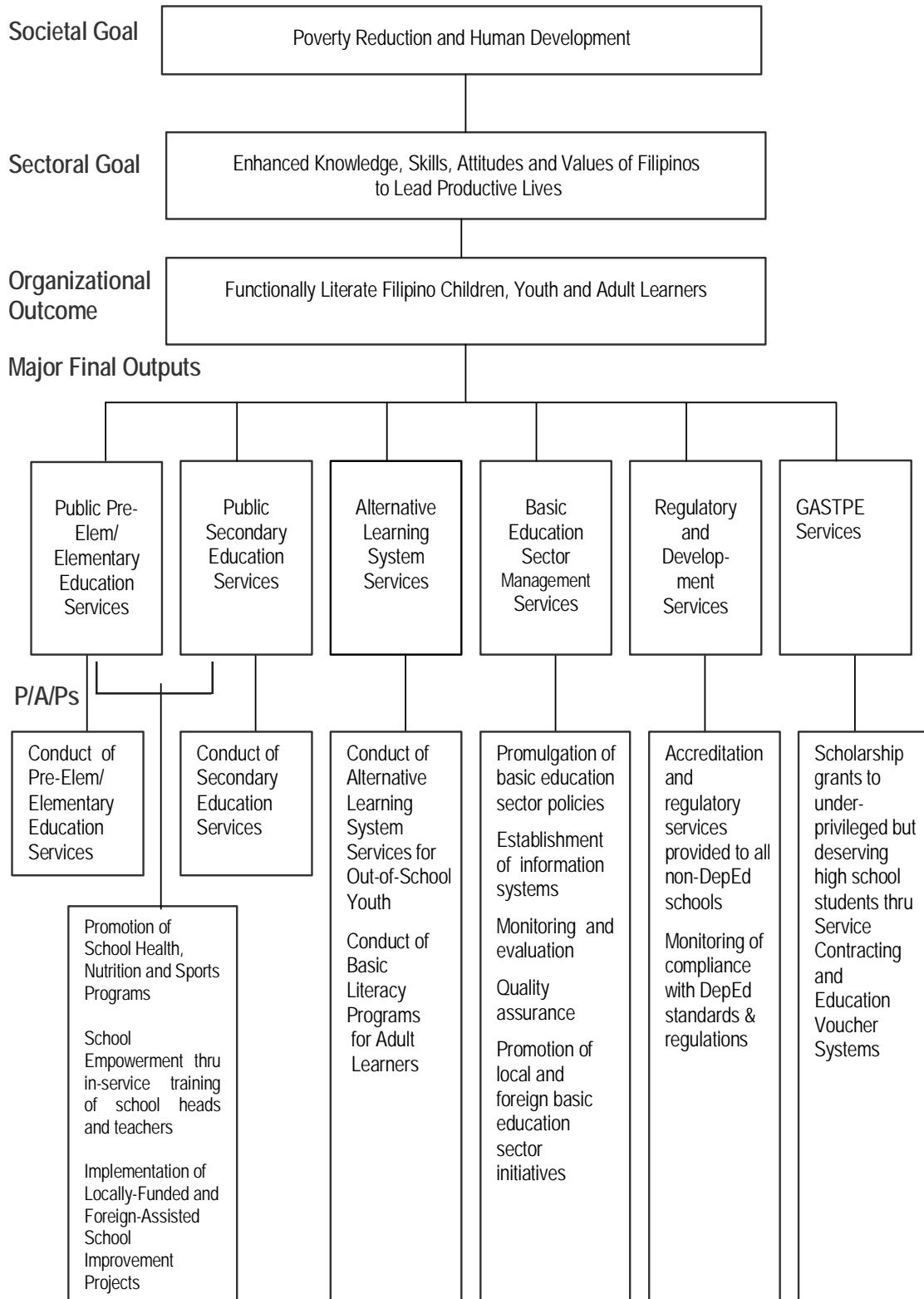
Particulars	PS	MOOE	CO	TOTAL	% SHARE
National Book Development Board	10,190	11,404	-	21,594	0.012%
National Council for Children's Television	1,500	8,265	-	9,765	0.006%
National Museum	62,135	64,956	-	127,091	0.074%
Philippine High School for the Arts	11,661	34,799	-	46,460	0.027%
DepEd-OSEC	140,708,861	22,140,256	9,788,703	172,637,820	99.881%
<b>TOTAL</b>	<b>140,794,347</b>	<b>22,259,680</b>	<b>9,788,703</b>	<b>172,842,730</b>	<b>100.000%</b>
<b>% SHARE</b>	<b>81.46%</b>	<b>12.88%</b>	<b>5.66%</b>	<b>100.00%</b>	

**By Expense Class**  
(Total Budget = P172,842,730,000)



## DepEd-Office of the Secretary

### LOGICAL FRAMEWORK (DepEd-OSEC)



**PERFORMANCE MEASURES AND TARGETS**  
(Amounts in Thousand Pesos)

Particulars	FY 2008	FY 2009	FY 2010
	Amount/ Actual	Amount/ Target	Amount/ Target
<b>MFO 1</b>			
<b>Public Pre-Elementary and Elementary Education Services</b>	<b>104,304,831</b>	<b>114,320,707</b>	<b>115,386,120</b>
<u>Public Pre-Elementary Education Services</u>			
Enrolment in DepEd & DepEd-contracted pre-schools	746,443	809,711	878,281
No. of public pre-school completers	736,625	801,613	869,399
No. of public pre-school children who passed Grade 1 (G1) readiness test administered	} Not Yet Available (NYA)	721,452	808,541
% of underweight pre-school children		6.00%	4.00%
<u>Public Elementary Education Services</u>			
Enrolment in public elementary schools	12,562,272	13,071,152	13,607,517
Participation rate	77.66%	79.41%	81.24%
Completion rate	72.16%	76.69%	80.15%
Percent of Grade 3 (G3) effective readers (instructional level) to the total G3 enrollees			
English	} No Data Available (NDA)	81.56%	84.56%
Filipino		82.90%	85.00%
Mean Percentage Scores in National Achievement Test (NAT) of Grade 6 (G6) in public schools			
Total Test	66.33	70.00	75.04
English	62.14	66.81	75.12
Science	59.63	63.09	68.92
Math	68.70	69.08	74.27
Filipino	72.21	78.37	82.18
HeKaSi	68.99	77.82	77.82
% of underweight children to the total no. of G1-G6 enrollees	NYA	12.00%	
<b>MFO 2</b>			
<b>Public Secondary Education Services</b>	<b>44,805,273</b>	<b>48,949,511</b>	<b>49,770,667</b>
Enrolment in public secondary schools	5,378,756	5,510,322	5,754,477
Participation rate	46.85%	47.05%	48.15%
Completion rate	72.34%	76.53%	78.56%
MPS in NAT of Year II (Y-II) students in public secondary schools			
Total Test	47.40	53.25	57.56
English	52.37	57.80	62.48
Science	43.40	50.50	54.58
Math	39.53	46.32	50.07
Filipino	51.21	51.48	55.65
Araling Panlipunan	50.51	60.13	65.00
MPS in National Career Assessment Exam (NCAE) of Year IV (Y-IV) students in public secondary schools			
Gen. Scholastic Aptitude	43.88	50.22	54.84
Tech. Voc. Aptitude	58.68	62.44	65.75
Non-Verbal Ability	NYA	52.05	56.52
Entrepreneurial Skills	71.69	76.35	77.72

Particulars	FY 2008	FY 2009	FY 2010
	Amount/ Actual	Amount/ Target	Amount/ Target
<b>MFO 3</b>			
Alternative Learning System (ALS) Services	446,230	346,524	521,093
Ratio of completers to total no. of learners in DepEd-delivered ALS programs	1 : 1.3	1 : 1.3	1 : 1.3
Ratio of completers to total no. of learners in DepEd-procured ALS programs	1 : 1.4	1 : 1.3	1 : 1.2
Ratio of test passers to total no. of test takers of Accreditation and Equivalency (A & E) Test	1 : 4	1 : 4	1 : 4
<b>MFO 4</b>			
Basic Education Sector Management Services	3,056,850	6,304,870	3,018,235
No. of policies to be reviewed, assessed and formulated for the current year	21	16	
% of basic education sector policies and standards adopted by Teacher Education Council (TEC), TESDA, CHED, PRC and Civil Service Commission to total no. of policies formulated	5.00%	30.00%	
<b>MFO 5</b>			
Regulatory and Development Services	-	-	2,145
Ratio of non-DepEd pre-schools with permit to operate as a proportion to total number of non-DepEd pre-schools			
Ratio of private elementary schools with permit to operate to the total number of private elementary schools			
Ratio of private secondary schools with government recognition to the total no. of private secondary schools with DepEd permit to operate			
<b>MFO 6</b>			
Government Assistance to Students and Teachers in Private Education (GASTPE) Services	2,907,999	4,288,747	3,939,560
Ratio of Education Service Contracting (ESC) completers to ESC grantees	NDA	25:25	25:25
Ratio of Education Voucher System (EVS) completers to EVS grantees		25:25	25:25
MPS in NCAE			
ESC grantees		52.47	54.05
EVS grantees			
<b>TOTAL <sup>1/</sup></b>	<b>155,521,183</b>	<b>174,210,359</b>	<b>172,637,820</b>

Note: Data for public elementary and secondary enrolment, completion and participation rate exclude SUCs

<sup>1/</sup> - Includes Special Purpose Fund - DepEd School Building Program and RLIP

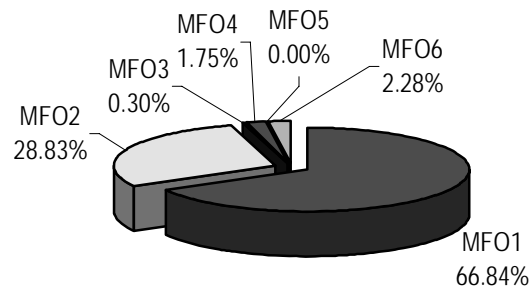
## FY 2010 MFO BUDGET

### By MFO/By Expense Class (In thousand pesos)

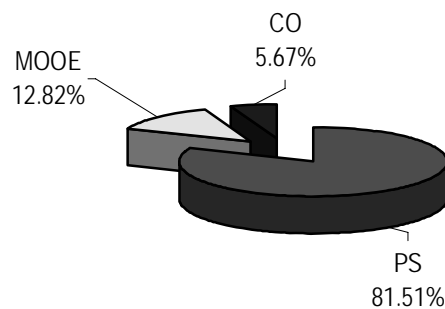
Particulars	PS	MOOE	CO	TOTAL	% Share
<b>MFO 1</b> Public Pre-Elem. and Elementary Education Services	97,530,209	11,378,527	6,477,384	115,386,120	66.84%
<b>MFO 2</b> Public Secondary Education Services	41,764,783	5,135,055	2,870,829	49,770,667	28.83%
<b>MFO 3</b> Alternative Learning System Services	36,418	484,675	-	521,093	0.30%
<b>MFO 4</b> Basic Education Sector Management Services	1,377,451	1,200,294	440,490	3,018,235	1.75%
<b>MFO 5</b> Regulatory and Development Services	-	2,145	-	2,145	0.00%
<b>MFO 6</b> GASTPE Services	-	3,939,560	-	3,939,560	2.28%
<b>TOTAL</b>	<b>140,708,861</b>	<b>22,140,256</b>	<b>9,788,703</b>	<b>172,637,820 *</b>	<b>100.00%</b>
<b>% Share</b>	<b>81.51%</b>	<b>12.82%</b>	<b>5.67%</b>	<b>100.00%</b>	

\* Including Special Purpose Fund-DepEd School Building Program and RLIP

### By MFO (Total Budget = P172,637,820,000)



### By Expense Class (Total Budget = P172,637,820,000)







## National Book Development Board

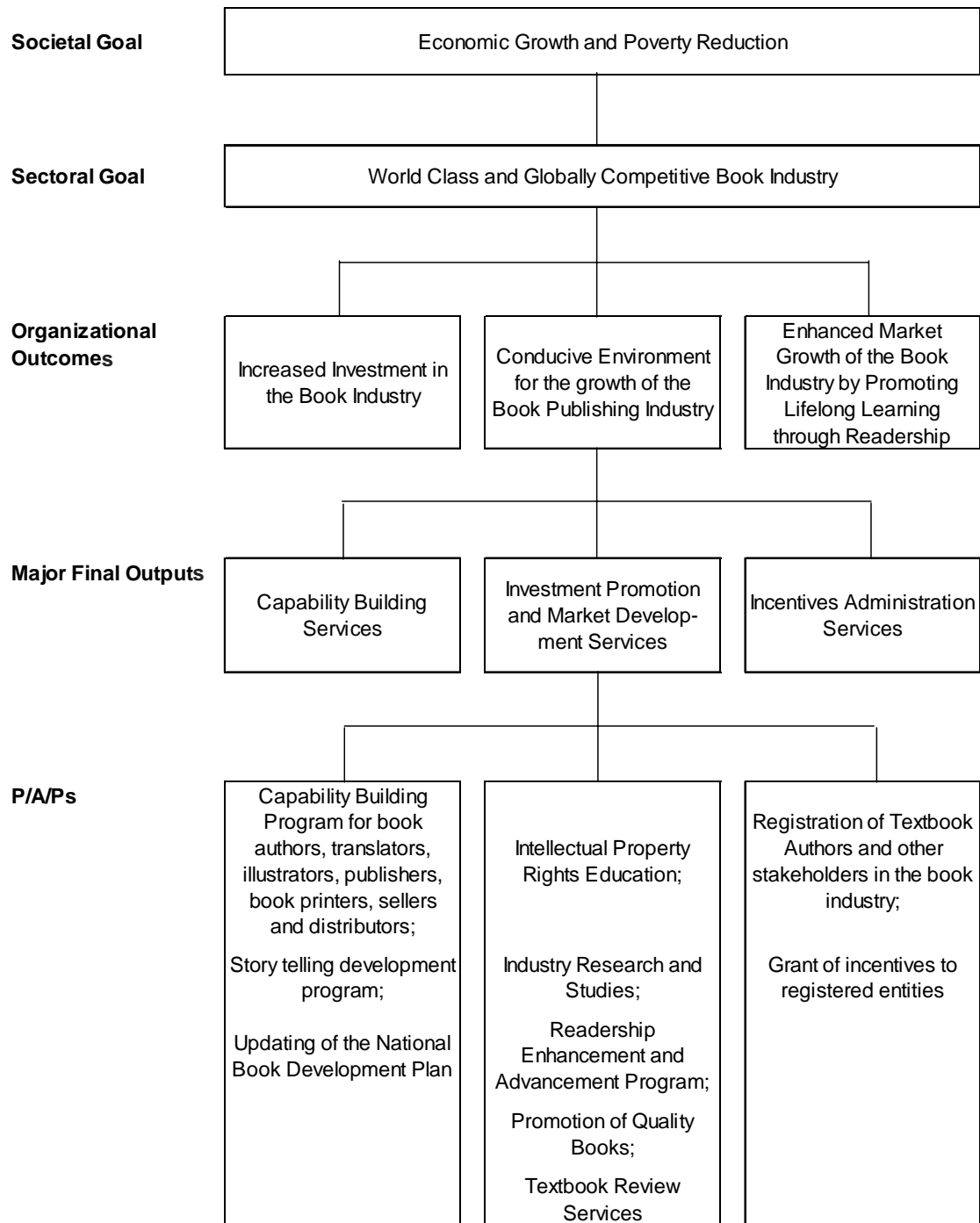
### Legal Basis

**Republic Act No. 8047** (June 7, 1995), Book Publishing Industry Development Act, created the National Book Development Board (NBDB); abolished the Instructional Materials Development Center (IMDC), an agency under the Department of Education, Culture and Sports (DECS), and paved the way for the full privatization of the DECS' Textbook Program.

### Mandate

The National Book Development Board (NBDB) formulates, adopts and implements a National Book Policy and a corresponding National Book Development Plan that will serve as basis for fostering the progressive growth and viability of the book industry. It ensures an adequate supply of affordable, quality-produced books for the domestic export market.

LOGICAL FRAMEWORK (NBDB)



**PERFORMANCE MEASURES AND TARGETS**  
(Amounts in Thousand Pesos)

Particulars	FY 2008	FY 2009	FY 2010
	Amount/ Actual	Amount/ Target	Amount/ Target
<b>MFO I</b>	<b>2,858</b>	<b>3,114</b>	<b>2,522</b>
<b>Capability Building Services</b>			
Seminars on the latest printing/publishing technologies			
Number of seminars/ training courses conducted	2	2	2
Number of participants to seminars/training courses	60	30	30
Seminars for Authors, Translators, Illustrators, Publishers, Book Printers, Sellers and Distributors			
Number of seminars/ training courses conducted	4	2	2
Number of participants to seminars/training courses	50	30	30
Storytelling Skills Development Program			
Number of seminars/ training courses conducted	6	5	5
Number of participants to seminars/training courses	40	30	30
Updating/Rewriting of the National Book Development Plan 2010-1012			
Number of consultations conducted	0	1	1
Number of sectors which participated	0	9	9
<b>MFO 2</b>	<b>17,807</b>	<b>19,405</b>	<b>9,321</b>
<b>Investment Promotion and Market Development Services</b>			
Intellectual Property Rights Education for Industry			
Number of seminars on Intellectual Property Rights	1	9	9
Number of participants	25	50	50
Conduct of Philippine Book Development Month through Festival, Lecture, Workshop, Literary Performances, and other events			
Number of activities/events conducted	13	6	6
Number of participants per activity	60	40	40
Readership Development Program			
a) Conduct of Book Club Sessions			
Number of book clubs sessions conducted	0	12	12

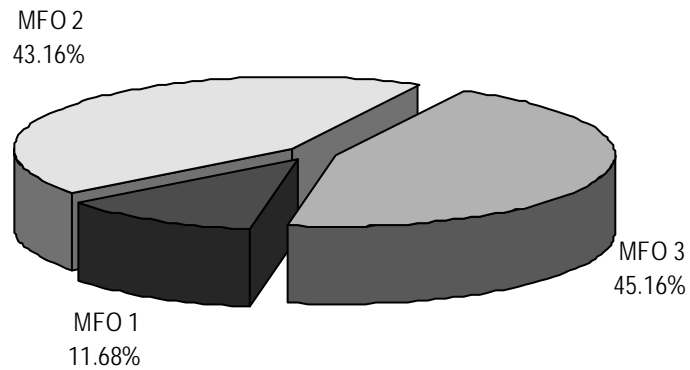
Particulars	FY 2008	FY 2009	FY 2010
	Amount/ Actual	Amount/ Target	Amount/ Target
b) Readership Enhancement and Advancement (READ) program			
Number of READ programs conducted	5	5	5
Number of participants in the READ program	40	40	40
c) Get Caught Reading (GCR) Campaign			
Number of Endorsement	2	2	2
Number of media exposure	2	2	2
Number of campaign materials published	2	2	2
d) Tulaan sa Tren (Train of Thought)			
Number of promotional materials produced	0	2,000	2,000
Number of endorsements	0	10	10
Number of poems	0	40	40
Promotion of quality books thru:			
a) Conduct of Quality Seal Awards (QSA) for textbooks			
Number of private textbooks given QSA	5	2	2
Number of entrees evaluated	10	10	10
Percentage of books nominated for QSA process	100%	100%	100%
b) Administration of National Book Awards (NBA)			
Number of NBA winners	26/18	1 per	1 per
c) National Textbook Review Services			
Number of private textbook titles evaluated	8	300	300
<b>MFO 3</b>	<b>1,319</b>	<b>10,890</b>	<b>9,751</b>
<b>Incentive Administration Services</b>			
Registration of Authors and Other Stakeholders in the book industry with the NBDB			
Percentage increase in no. of registered entities	17%	10%	15%
Grant of Incentives to Registered Entities			
Percentage of requests acted upon vs. total application for tax incentives	100%	100%	100%
<b>Total</b>	<b>21,984</b>	<b>33,409</b>	<b>21,594</b>

## FY 2010 MFO BUDGET

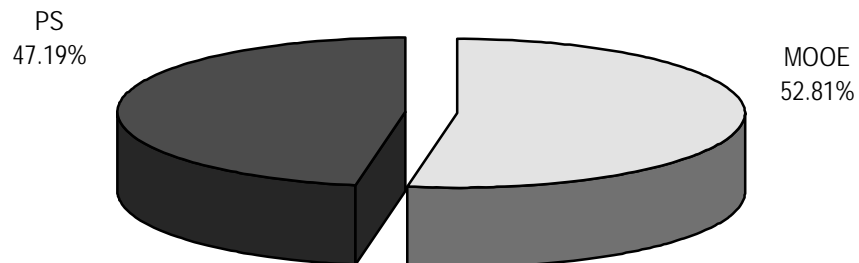
### By MFO/By Expense Class (In thousand pesos)

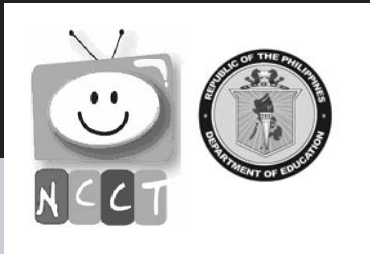
Particular	PS	MOOE	CO	Total	% Share
MFO 1 Capability Building Services	1,426	1,096	0	2,522	11.68%
MFO 2 Investment Promotion and Market Development Services	4,383	4,938	0	9,321	43.16%
MFO 3 Incentive Administration Services	4,381	5,370	0	9,751	45.16%
<b>TOTAL</b>	<b>10,190</b>	<b>11,404</b>	<b>0</b>	<b>21,594</b>	<b>100.00%</b>
<b>% Share</b>	<b>47.19%</b>	<b>52.81%</b>	<b>0.00%</b>	<b>100.00%</b>	

**By MFO**  
(Total Budget = P21,594,000)



**By Expense Class**  
(Total Budget = P21,594,000)





## National Council for Children's Television

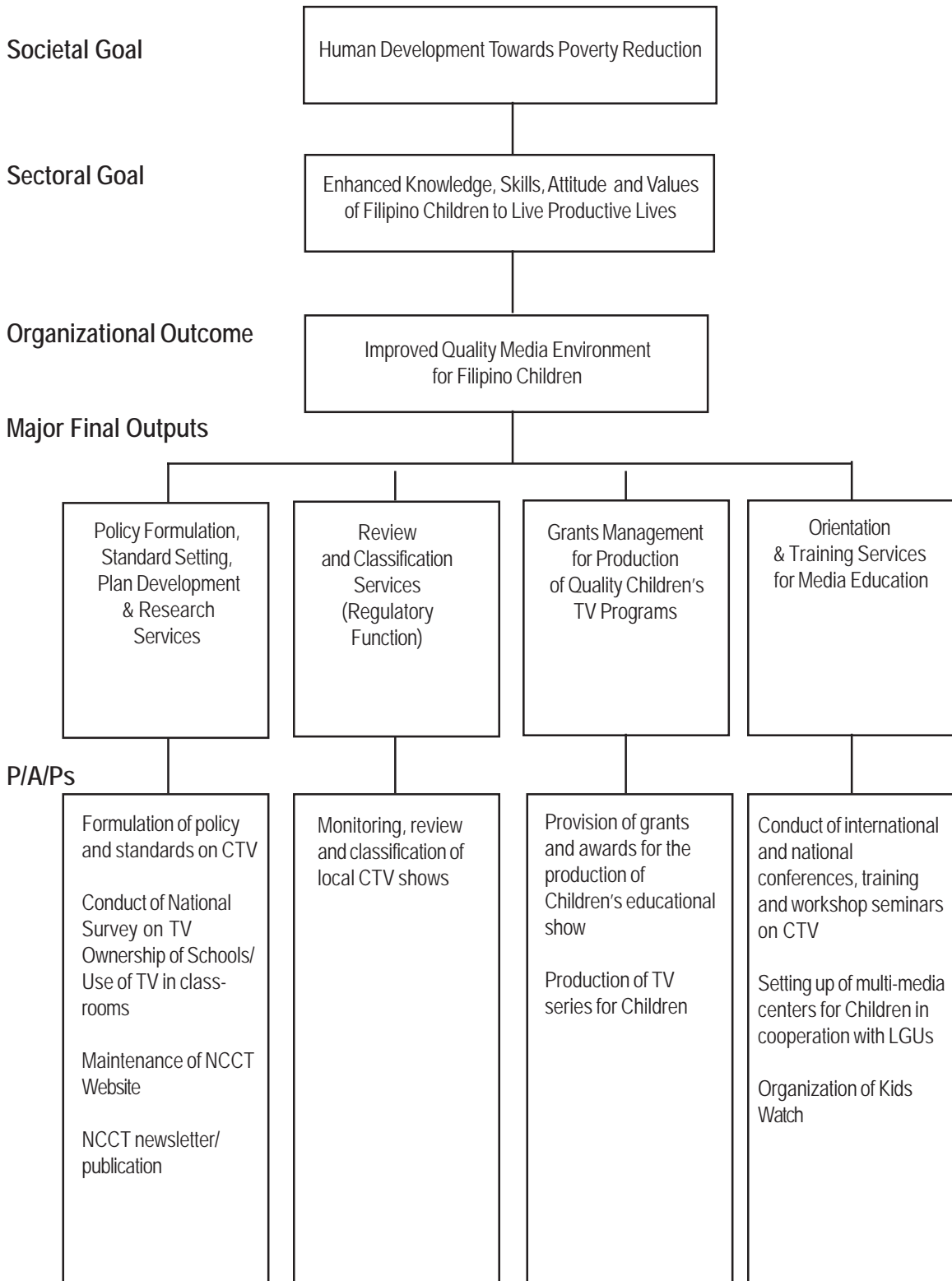
### Legal Basis

- **Republic Act No. 8370** (July 28, 1997), the Children's Television Act of 1997, created the National Council for Children's Television as an attached agency to the Office of the President.
- **Executive Order No. 203** (May 5, 2003) transferred the National Council for Children's Television from the Office of the President to the Department of Education.

### Mandate

The National Council for Children's Television (NCCT) develops a comprehensive media plan that initiates, promotes, and supports quality television programs to develop the Filipino child's critical thinking and communication skills, moral values, and strong sense of national identity. It aims to ensure that all children in the Philippines will have access to quality television programs that are creative, informative, educational and entertaining wherever they are and in whatever circumstance they are in.

**LOGICAL FRAMEWORK (NCCT)**



**PERFORMANCE MEASURES AND TARGETS**  
(Amounts in Thousand Pesos)

Particulars	FY 2008	FY 2009	FY 2010
	Amount/Actual	Amount/Target	Amount/Target
<b>MFO 1</b>			
<b>Policy Formulation, Standard Setting, Plan Development and Research Activities</b>	<b>956</b>	<b>3,728</b>	<b>4,122</b>
Formulates standards in TV with regulatory agencies			
No. of standards formulated	0	0	0
Status of completion	10%		
Review, publish and consult stakeholders on IRR			
No. of persons consulted	100	200	200
Conduct National Survey on TV ownership of schools/Use of TV in Classrooms			
No. of survey conducted	1	4	3
No. of participants to the survey	192	700	700
Launched NCCT Website 24/7			
No. of visitor to the Web	200	1,500	1,500
Publish newsletter			
No. of newsletter published	1	3	3
No. of persons who received newsletter	1,500	3,750	3,750
<b>MFO 2</b>			
<b>Review and Classification Services</b>		<b>563</b>	<b>307</b>
Monitor, classify and review local CTV shows			
No. of shows reviewed and classified		5	5
<b>MFO 3</b>			
<b>Grants Management for Production of Quality Children's Television Program</b>		<b>621</b>	<b>290</b>
Provision of grants and awards for the production of Children's Education Show for pre-school & elementary			
No. of production/producer awarded	0	0	1
Production of TV series for children			
No. of CTV produced	0	0	0
<b>MFO 4</b>			
<b>Orientation and Training Services for Media Education and Use of TV for Education</b>	<b>2,826</b>	<b>8,362</b>	<b>5,046</b>
Conduct National Conference on children TV			
No. of national conference conducted	1	1	1
No. of participants in the conference	93	150	150
Conduct International Conference on children TV			
No. of international conference conducted	1	1	1
No. of participants in the conference	93	150	150
Conduct film appreciation Workshop for Children/teachers/Parents w/ CCP and Cinemalaya			
No. of sessions/workshops conducted	12	12	12



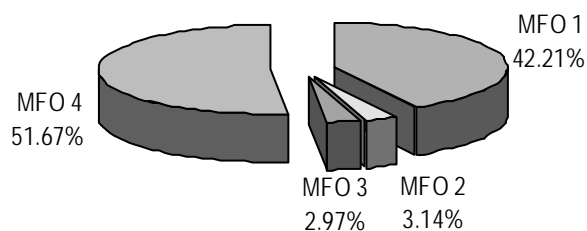
PARTICULARS	FY 2008	FY 2009	FY 2010
	Amount/Actual	Amount/Target	Amount/Target
Conduct orientation and training workshop for Teachers (Luzon, Visayas, Mindanao)			
No. of trainings conducted	3	3	3
No. of participants trained	147	350	700
Organize Kidswatch unit for monitoring of media by students, teachers, and parents group			
No. of Kidswatch units established	3	50	50
Conduct workshop for teachers, students			
No. of workshops for ES Teachers conducted	10	10	20
No. of participants trained	483	300	750
Setup multi-media centers for children in cooperation with LGUs for out-of-school children and community			
No. of children's media centers established	-	1	1
No. of children/student participants	-	1,200	1,200
<b>TOTAL</b>	<b>3,782</b>	<b>13,274</b>	<b>9,765</b>

## FY 2010 MFO Budget

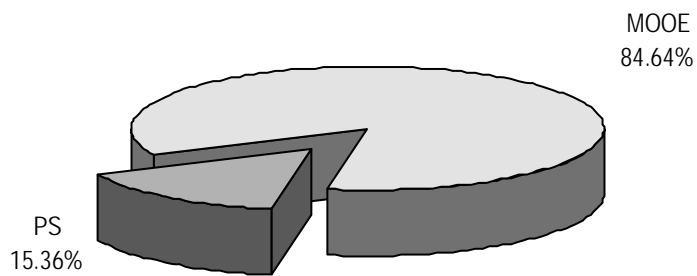
### By MFO/By Expense Class (In thousand pesos)

Particular	PS	MOOE	CO	Total	% Share
<b>MFO 1</b> Policy formulation, standard setting, plan development and research activities	31	4,091	-	4,122	42.21%
<b>MFO 2</b> Review and classification services	-	307	-	307	3.14%
<b>MFO 3</b> Grants management for production of quality children's television program	112	178	-	290	2.97%
<b>MFO 4</b> Orientation and training services for media education and use of TV for education	1,357	3,689	-	5,046	51.67%
<b>TOTAL</b>	<b>1,500</b>	<b>8,265</b>	<b>-</b>	<b>9,765</b>	<b>100.00%</b>
<b>% Share</b>	<b>15.36%</b>	<b>84.64%</b>	<b>0.00%</b>	<b>100.00%</b>	

**By MFO**  
(Total Budget = P9,765,000)



**By Expense Class**  
(Total Budget = P9,765,000)





**National Museum**

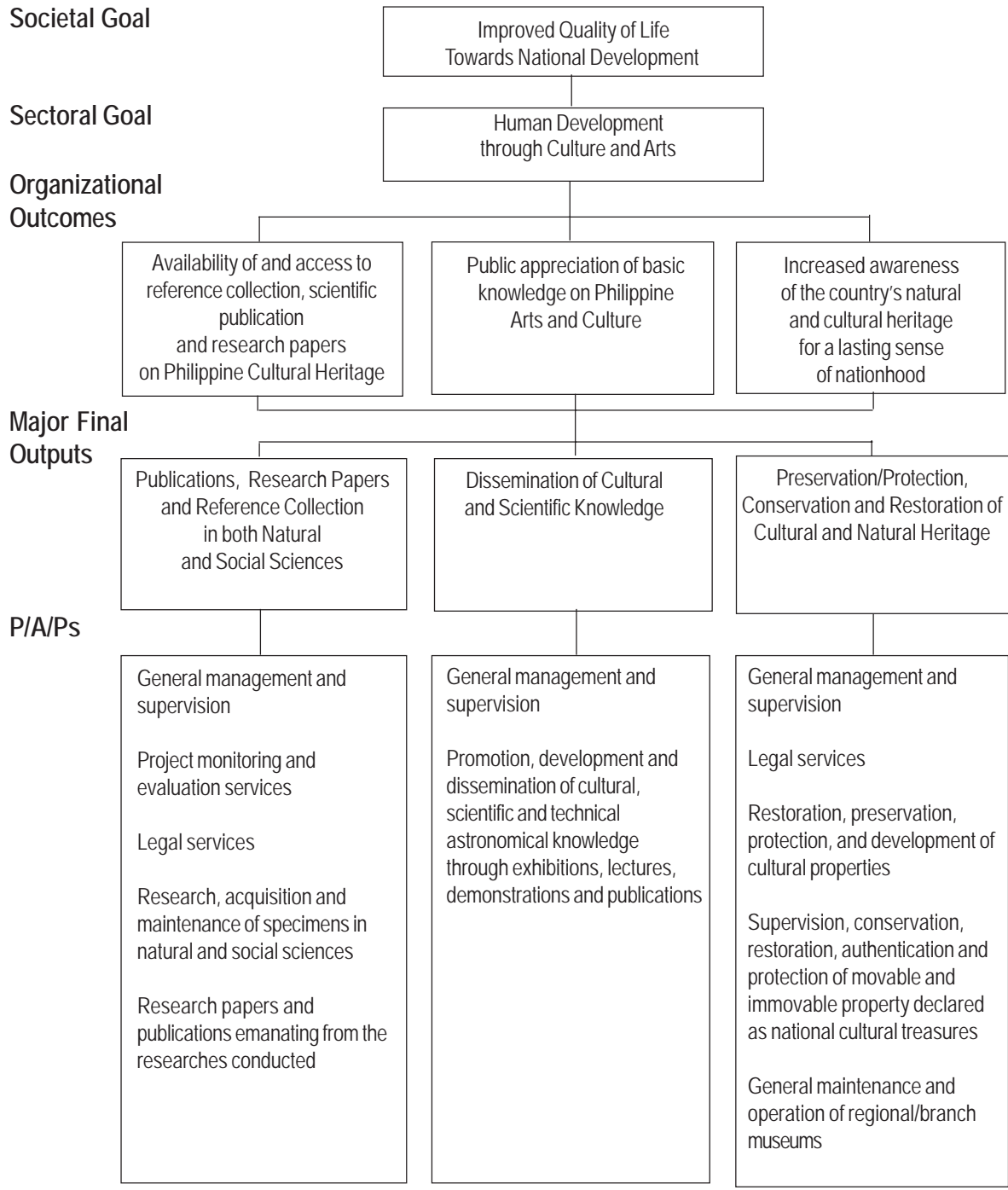
### **Legal Basis**

**Republic Act No. 8492** (February 12, 1998) established the National Museum as an educational and a scientific institution as well as a cultural center.

### **Mandate**

The National Museum (NM) takes the lead in disseminating knowledge of Filipino cultural and historical heritage and in developing a corps of professionals knowledgeable about the preservation, enrichment, and dynamic evaluation of the Filipino national culture. It conducts basic and systematic research programs combining integrated laboratory and field work in anthropology and archaeology, geology and paleontology, botany and zoology, and maintains reference collection on these disciplines to promote scientific development in the Philippines. It also studies and preserves the nation's rich artistic and cultural heritage in the reconstruction and rebuilding of its past and in the development of the national cultural wealth.

**LOGICAL FRAMEWORK (NM)**



**PERFORMANCE MEASURES AND TARGETS**  
(Amounts in Thousand Pesos)

Particulars	FY 2008 Amount/Actual	FY 2009 Amount/Target	FY 2010 Amount/Target
<b>MFO 1:</b>	<b>45,954</b>	<b>41,784</b>	<b>42,261</b>
<b>Publications, research papers and reference collection in both natural and social sciences</b>			
Number of research projects conducted	164	172	172
Number of zoological, botanical, geological specimen acquired, processed, identified, illustrated, documented and maintained	280,297	280,297	294,312
Number of archeological and ethnological specimens acquired, processed, identified, illustrated, documented and maintained	148,571	93,396	98,066
Number of artifacts conserved and restored	1,744	1,744	1,831
Number of underwater and terrestrial archeological excavations, exploration conducted	31	31	33
Number of publications and research papers prepared	129	129	135
<b>MFO 2:</b>	<b>19,922</b>	<b>22,490</b>	<b>21,880</b>
<b>Dissemination of cultural and scientific knowledge</b>			
Number of exhibits conducted (exhibits in Museum of the Filipino People)	78	56	80
Number of visitors / viewers of exhibits (exhibits in Museum of the Filipino People)	461,368	461,368	484,436
Number of attendees of museology trainings, lectures, seminars / workshops organized	1,122	1,122	1,178
Number of scientific / technical papers, popular/ promotional instructional materials prepared for publications and promotions	1,651	1,600	1,680
Number of astronomical shows demonstrated (Planetarium Bldg. and Mobile Planetarium)	81	0	300
<b>MFO 3:</b>	<b>49,896</b>	<b>99,751</b>	<b>62,950</b>
<b>Preservation / protection, conservation and restoration of cultural and natural heritage</b>			
Number of cultural properties authenticated/ registered and identified	1,421	1,000	1,500

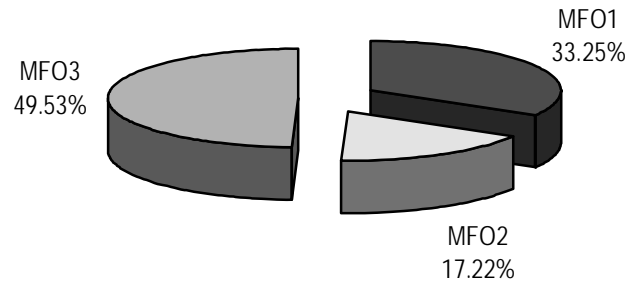
Particulars	FY 2008	FY 2009	FY 2010
	Amount/Actual	Amount/Target	Amount/Target
Number of licenses and permits issued	561	500	600
Number of artworks acquired, identified, authenticated, exhibited, illustrated and maintained	3,743	3,743	3,930
Number of immovable cultural properties / world heritage sites conserved, restored preserved and developed	11	5	7
Number of Regional Museums maintained and developed			
Regional/Branch Museum	15	15	15
Museum Site	4	4	4
<b>Total</b>	<b>115,772</b>	<b>164,025</b>	<b>127,091</b>

FY 2010 MFO Budget

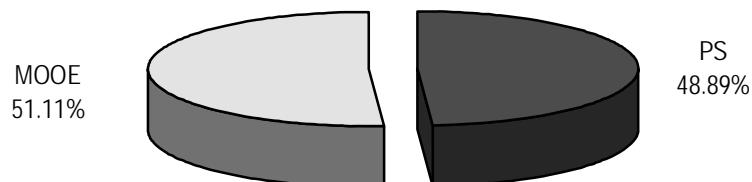
By MFO/By Expense Class  
(In thousand pesos)

Particulars	PS	MOOE	CO	Total	% Share
<b>MFO 1:</b> Publications, research papers and reference collection in both natural and social sciences	17,622	24,639	-	42,261	33.25%
<b>MFO 2:</b> Dissemination of cultural and scientific knowledge	8,056	13,824	-	21,880	17.22%
<b>MFO 3:</b> Preservation / protection, conservation and restoration of cultural and natural heritage	36,457	26,493	-	62,950	49.53%
<b>TOTAL</b>	<b>62,135</b>	<b>64,956</b>	<b>-</b>	<b>127,091</b>	<b>100.00%</b>
<b>% Share</b>	<b>48.89%</b>	<b>51.11%</b>	<b>0.00%</b>	<b>100.00%</b>	

By MFO  
(Total Budget = P127,091,000)



BY Expense Class  
(Total Budget = P127,091,000)





## Philippine High School for the Arts

### Legal Basis

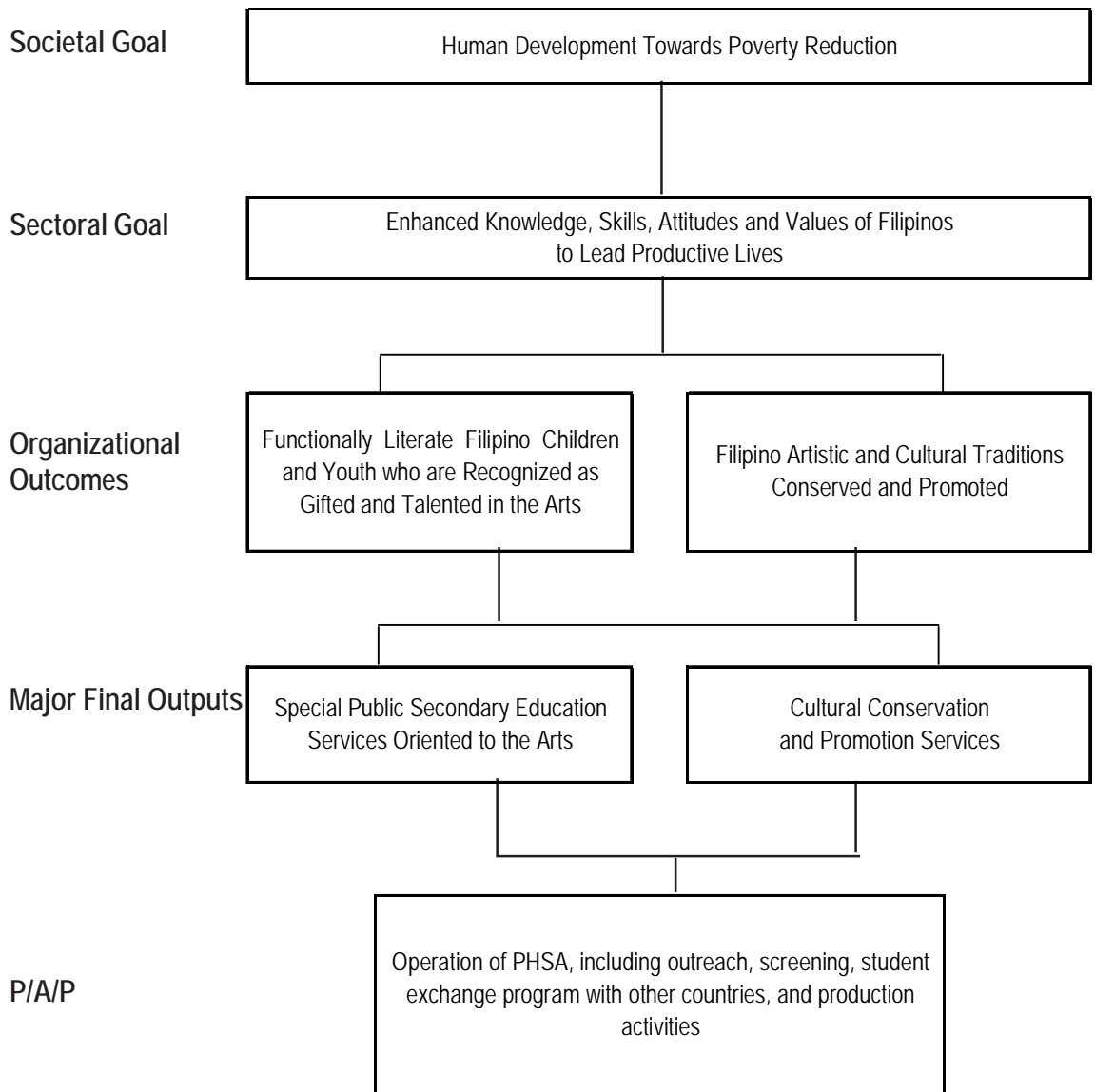
- **Presidential Decree No. 1287** (January 20, 1978) formally established the Philippine High School for the Arts (PHSA) which was created as a special school on June 11, 1977.
- **Executive Order No. 420** (September 7, 1990) converted the PHSA into a regular government agency attached to the Department of Education.

### Mandate

The Philippine High School for the Arts (PHSA) implements a general secondary level program, combined with a special curriculum oriented to the arts and geared to the early recognition and development of highly talented, exceptionally gifted students in the arts, thus providing a continuing source of artists of excellence and leaders in the preservation and promotion of Filipino heritage in the arts.



## LOGICAL FRAMEWORK (PHSA)



**PERFORMANCE MEASURES AND TARGETS**  
(Amounts in Thousand Pesos)

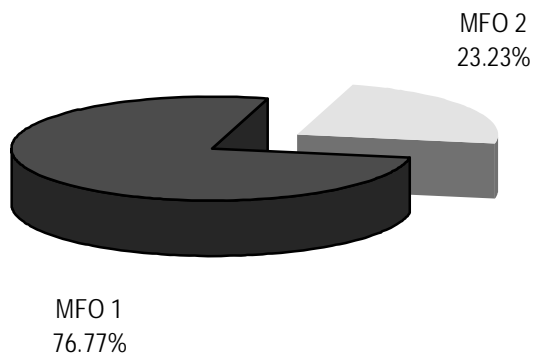
Particulars	2008	2009	2010
	Amount/ Actual	Amount/ Target	Amount/ Target
<b>MFO 1:</b>			
<b>Special Public Secondary Education Services Oriented to the Arts</b>	<b>34,177</b>	<b>36,504</b>	<b>35,669</b>
Number of applicants received for assessment	0	1,000	1,100
Number of applicants screened and identified for scholarship	37	40	40
Mean percentage performance in Center for Educational Measurement across levels	88%	85%	85%
Mean percentage score in the National Achievement Test (NAT)	61%	61%	61%
Mean percentage Score in the National Career Assessment Exam (NCAE)	95%	90%	90%
<b>MFO 2:</b>			
<b>Cultural Conservation and Promotion Services</b>	<b>9,111</b>	<b>10,891</b>	<b>10,791</b>
Number of research-based artworks published, staged, and/or exhibited	20	15	20
Number of schools assisted in initiating own and/or maintaining existing Special Arts Program	24	10	10
Number of persons attending cultural activities	5,255	2,000	4,800
Outside PHSA                      Within PHSA			
<b>Total</b>	<b>43,288</b>	<b>47,395</b>	<b>46,460</b>

## FY 2010 MFO BUDGET

### By MFO/By Expense Class (In thousand pesos)

Particulars	PS	MOOE	CO	TOTAL	% Share
<b>MFO 1 :</b> Special public secondary education services oriented to the arts	5,922	29,747	-	35,669	76.77%
<b>MFO 2 :</b> Cultural conservation and promotion services	5,739	5,052	-	10,791	23.23%
<b>TOTAL</b>	<b>11,661</b>	<b>34,799</b>	<b>0</b>	<b>46,460</b>	<b>100.00%</b>
<b>% Share</b>	<b>25.10%</b>	<b>74.90%</b>	<b>0.00%</b>	<b>100.00%</b>	

**By MFO**  
(Total Budget = P46,460,000)



**By Expense Class**  
(Total Budget=P46,460,000)

