



## National Academy of Science and Technology

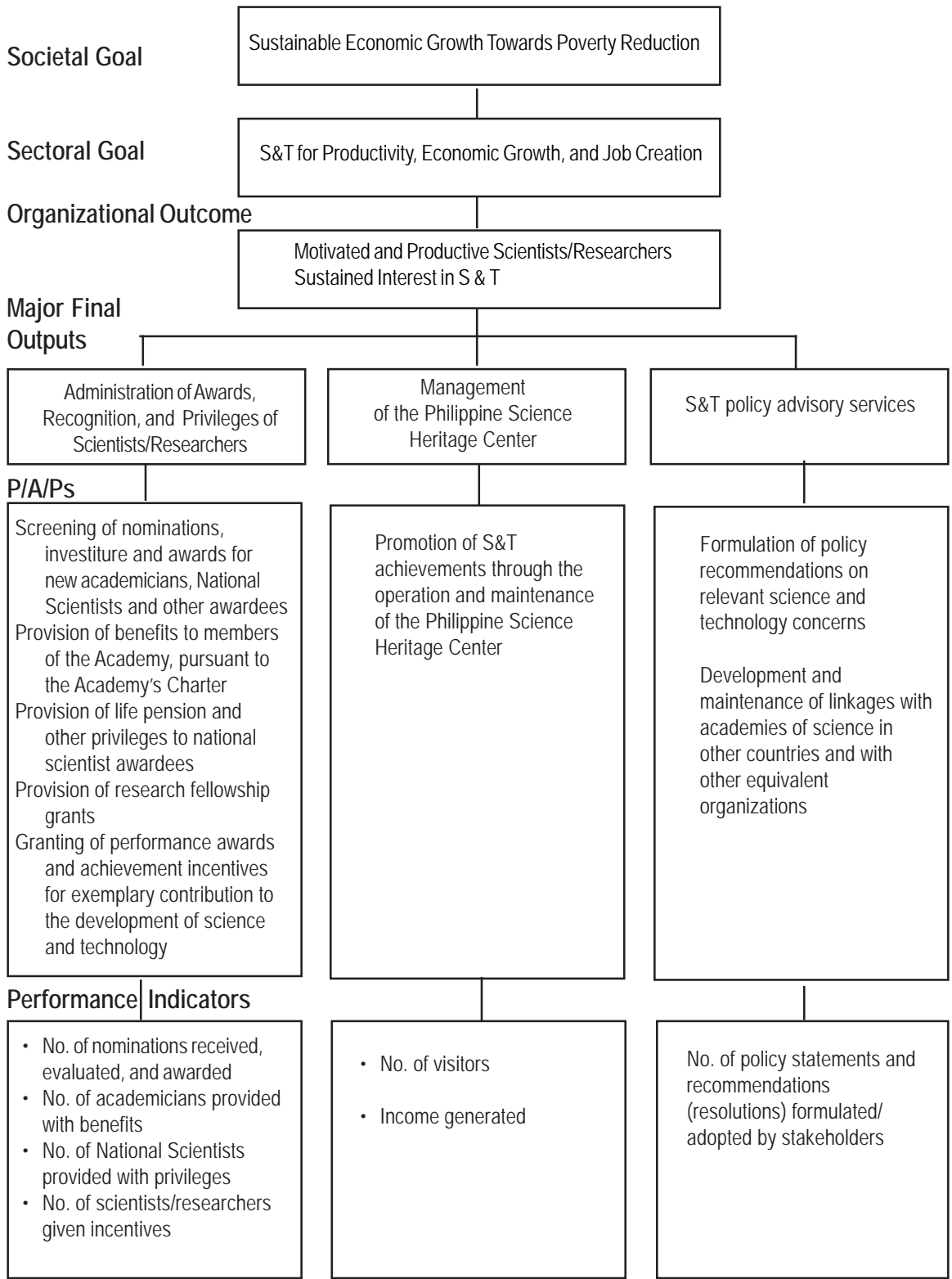
### Legal Basis

- **Presidential Decree No. 1003- A** (December 17, 1976), as amended, created the National Academy of Science and Technology (NAST).
- **Executive Order No. 818** (July 16, 1982) amended P.D. 1003-A creating the NAST.
- **Republic Act No. 9107** (April 14, 2004) created the Philippine Science Heritage Center under the management of the NAST.

### Mandate

The National Academy of Science and Technology (NAST) advises the President on matters related to science and technology; engages in projects and programs designed to promote scientific productivity; and, embarks on programs traditionally and internationally expected of an academy of science. The NAST recognizes outstanding achievements in science and technology and provides meaningful incentives to those engaged in scientific and technological researches.

**LOGICAL FRAMEWORK (NAST)**



**PERFORMANCE MEASURES AND TARGETS**  
(Amounts in Thousand Pesos)

| Particulars  | FY 2008           | FY 2009           | FY 2010           |
|--|-------------------|-------------------|-------------------|
|  | Actual/<br>Amount | Target/<br>Amount | Target/<br>Amount |
| <b>MFO 1</b>   |                   |                   |                   |
| <b>Administration of awards, recognition,<br/>and privileges of scientists/researchers</b> | <b>28,508</b>     | <b>29,163</b>     | <b>30,275</b>     |
| No. of nominations:  |                   |                   |                   |
| received   | 478               | 388               | 348               |
| evaluated  | 478               | 338               | 348               |
| awarded  | 66                | 50                | 53                |
| No. of academicians provided with benefits   | 59                | 60                | 66                |
| No. of National Scientists provided with privileges  | 10                | 12                | 14                |
| No. of scientists/researchers given incentives   | 278               | 200               | 260               |
| <b>MFO 2</b>   |                   |                   |                   |
| <b>Management of the Philippine<br/>Science Heritage Center</b>                            | <b>304</b>        | <b>986</b>        | <b>1,283</b>      |
| No. of visitors  | 26,232            | 50,000            | 16,500            |
| Income generated   | 314,280           | 100,000           | 297,000           |
| <b>MFO 3</b>   |                   |                   |                   |
| <b>Science and Technology Advisory Services</b>  | <b>5,085</b>      | <b>4,453</b>      | <b>4,663</b>      |
| No. of policy statements and recommendations<br>or resolutions:                            |                   |                   |                   |
| formulated   | 12                | 8                 | 10                |
| adopted  | 8                 | 4                 | 5                 |
| <b>From Other Sources</b>  | <b>4,918</b>      |                   |                   |
| <b>TOTAL</b>   | <b>38,815</b>     | <b>34,602</b>     | <b>36,221</b>     |

**Notes:**

*FY 2008 Actual Obligations are inclusive of funds from other sources:*

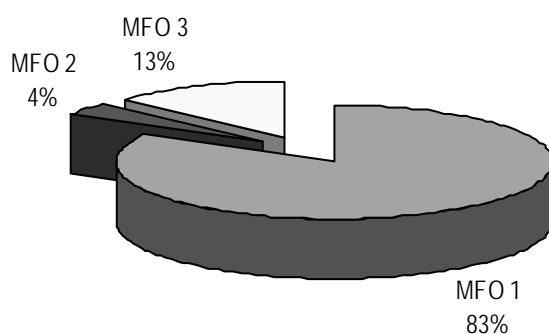
|                                      |                     |
|--------------------------------------|---------------------|
| <i>From Other Sources (details):</i> | <u><b>4,918</b></u> |
| <i>Continuing Appropriation</i>      | <i>967</i>          |
| <i>Sub-Allotment from DOST-OSEC</i>  | <i>3,951</i>        |

## FY 2010 MFO BUDGET

### By MFO/By Expense Class (In thousand pesos)

| Particulars  | PS           | MOOE          | CO         | TOTAL         | % Share     |
|--|--------------|---------------|------------|---------------|-------------|
| <b>MFO 1</b><br>Administration of awards, recognition,<br>and privileges of scientists/researchers | 3,222        | 27,018        | 35         | 30,275        | 83%         |
| <b>MFO 2</b><br>Management of the Philippine<br>Science Heritage Center                            | 313          | 795           | 175        | 1,283         | 4%          |
| <b>MFO 3</b><br>S&T policy advisory services   | 1,496        | 3,167         | -          | 4,663         | 13%         |
| <b>TOTAL</b>   | <b>5,031</b> | <b>30,980</b> | <b>210</b> | <b>36,221</b> | <b>100%</b> |
| <b>% Share</b>   | <b>14%</b>   | <b>85%</b>    | <b>1%</b>  | <b>100%</b>   |             |

**By MFO**  
(Total Budget = P36,221,000)



**By Expense Class**  
(Total Budget = P36,221,000)

