

Metals Industry Research and Development Center

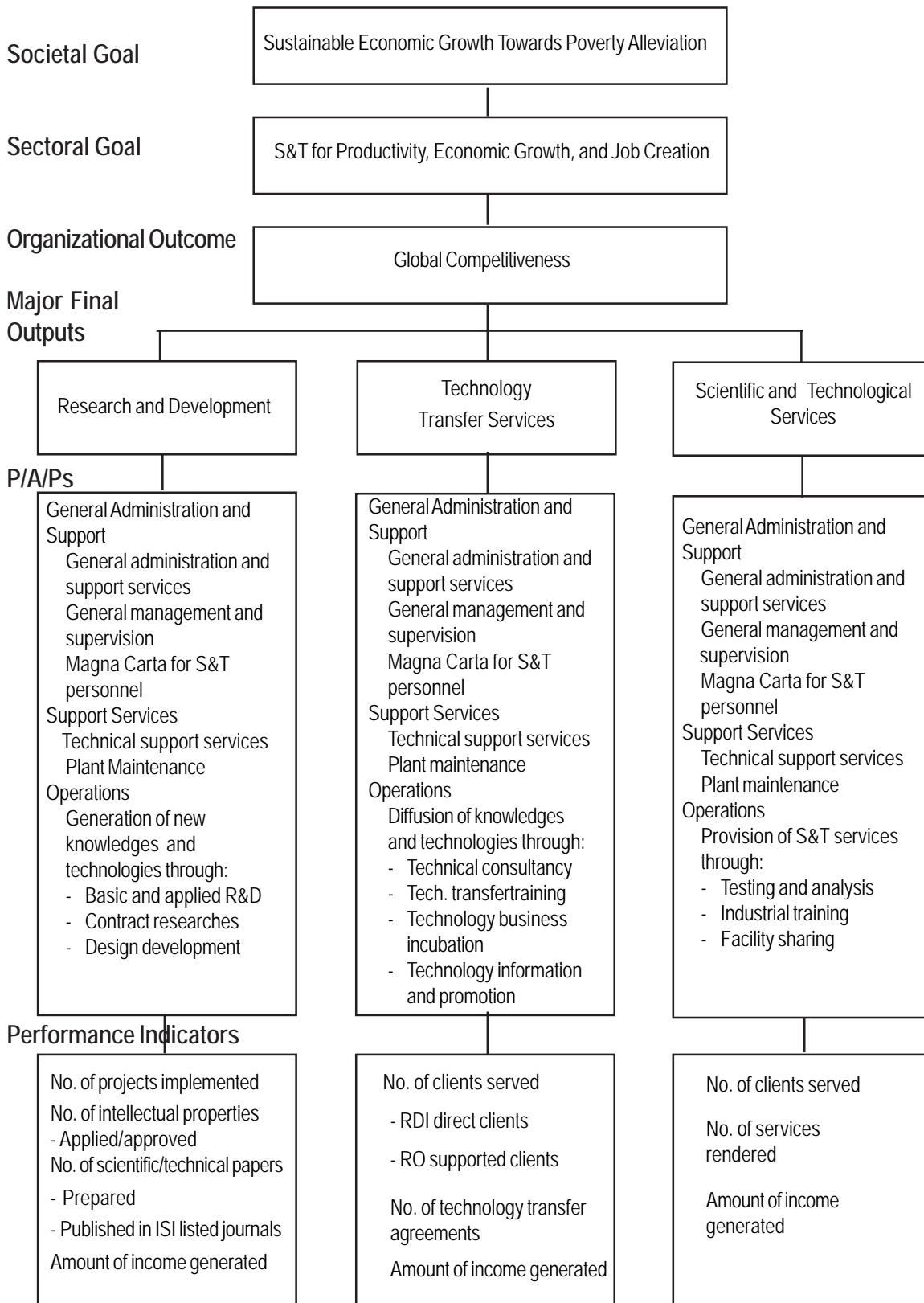
Legal Basis

- **Republic Act No. 4724** (1966) organized the Metals Industry Development Center (MIDC) to work for close support between the government and the industry to foster the advancement of metals, engineering, and allied industries in the country.
- **Republic Act No. 6428** (1972) reorganized and renamed the MIDC into the Metals Industry Research and Development Center (MIRDC), giving it corporate existence under the National Science Development Board (NSDB).
- **Executive Order No. 602** (1980) transferred MIRDC from the then NSDB to the Ministry of Trade and Industry, now the Department of Trade and Industry (DTI), for policy and program coordination and direction.
- **Presidential Decree No. 1765** (1981) reoriented MIRDC thrust from research and development to direct assistance to the metals industry.
- **Executive Order No. 128** (1987) transferred the MIRDC from the DTI to the Department of Science and Technology (DOST) as an attached agency.
- **Executive Order No. 494** (1992) transformed the MIRDC into a regular government agency under the DOST.

Mandate

The Metals Industry Research and Development Center (MIRDC) provides both the government and the private sector in the metals and engineering industry with professional management and technical expertise on training of engineers and technicians, information exchange, trade accreditation services, quality control and testing of metal products, research and development, and business economics advisory services.

LOGICAL FRAMEWORK (MIRDC)



PERFORMANCE MEASURES AND TARGETS
(Amounts in Thousand Pesos)

Particulars	FY2008	FY2009	FY2010
	Amount/ Actual	Amount/ Target	Amount/ Target
	MFO 1: Research & Development	45,295	37,561
No. of projects implemented	164	206	194
New	159	194	194
Ongoing	5	12	-
No. of intellectual properties applied/approved	4	6	6
No. of scientific/technical papers prepared vis-à-vis published	8/2	10/1	10/1
Amount of income generated ('000)	1,666	1,950	1,950
MFO 2: Technology Transfer Services	25,426	22,157	21,779
No. of clients served	967	775	775
RDI direct clients	233	361	370
RO supported clients	734	414	405
No. of technology transfer agreements	9	13	13
Amount of income generated ('000)	2,494	4,390	4,390
MFO 3: Scientific & Technological Services	48,602	38,970	37,659
No. of clients served	1,402	1,590	1,590
Testing and metrology	972	1,100	1,100
Industrial training	190	200	200
Facility sharing	240	290	290
No. of Services Rendered	5,013	4,420	4,420
Testing and metrology	3,747	3,100	3,100
Industrial training	607	700	700
Facility sharing	659	620	620
Amount of Income Generated ('000)	21,333	22,660	22,660
Testing and metrology	13,940	13,150	13,150
Industrial training	2,110	2,800	2,800
Facility sharing	5,283	6,710	6,710
TOTAL	119,323	98,688	95,629

Notes:

FY 2008 Actual Obligations are inclusive of funds from other sources, as follows:

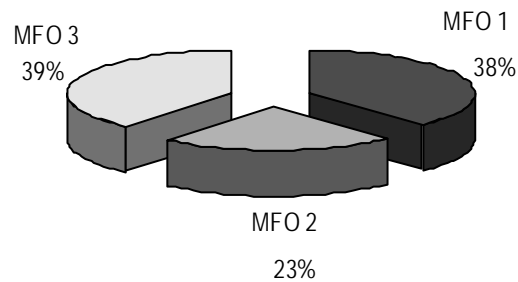
<i>Pension and Gratuity Fund</i>	149
<i>Miscellaneous Personnel Benefits Fund</i>	7,118
<i>Automatic Appropriations (RLIP 10% Salary Adj.)</i>	627
<i>Sub-Allotment from DOST-OSEC</i>	5,142
<i>Continuing Appropriations - regular</i>	590
<i>Continuing Appropriations - sub-allotment</i>	7,165
	20,791

FY 2010 MFO BUDGET

By MFO/By Expense Class (In thousand pesos)

Particulars	PS	MOOE	CO	TOTAL	% Share
MFO 1:					
Research and Development	25,948	10,243	-	36,191	38%
MFO 2:					
Technology Transfer Services	16,442	5,337	-	21,779	23%
MFO 3:					
Scientific & Technological Services	25,407	12,252	-	37,659	39%
TOTAL	67,797	27,832	-	95,629	100%
% Share	71%	29%	0%	100%	

By MFO (Total Budget = P95,629,000)



By Expense Class (Total Budget = P95,629,000)

