



## Philippine Overseas Employment Administration

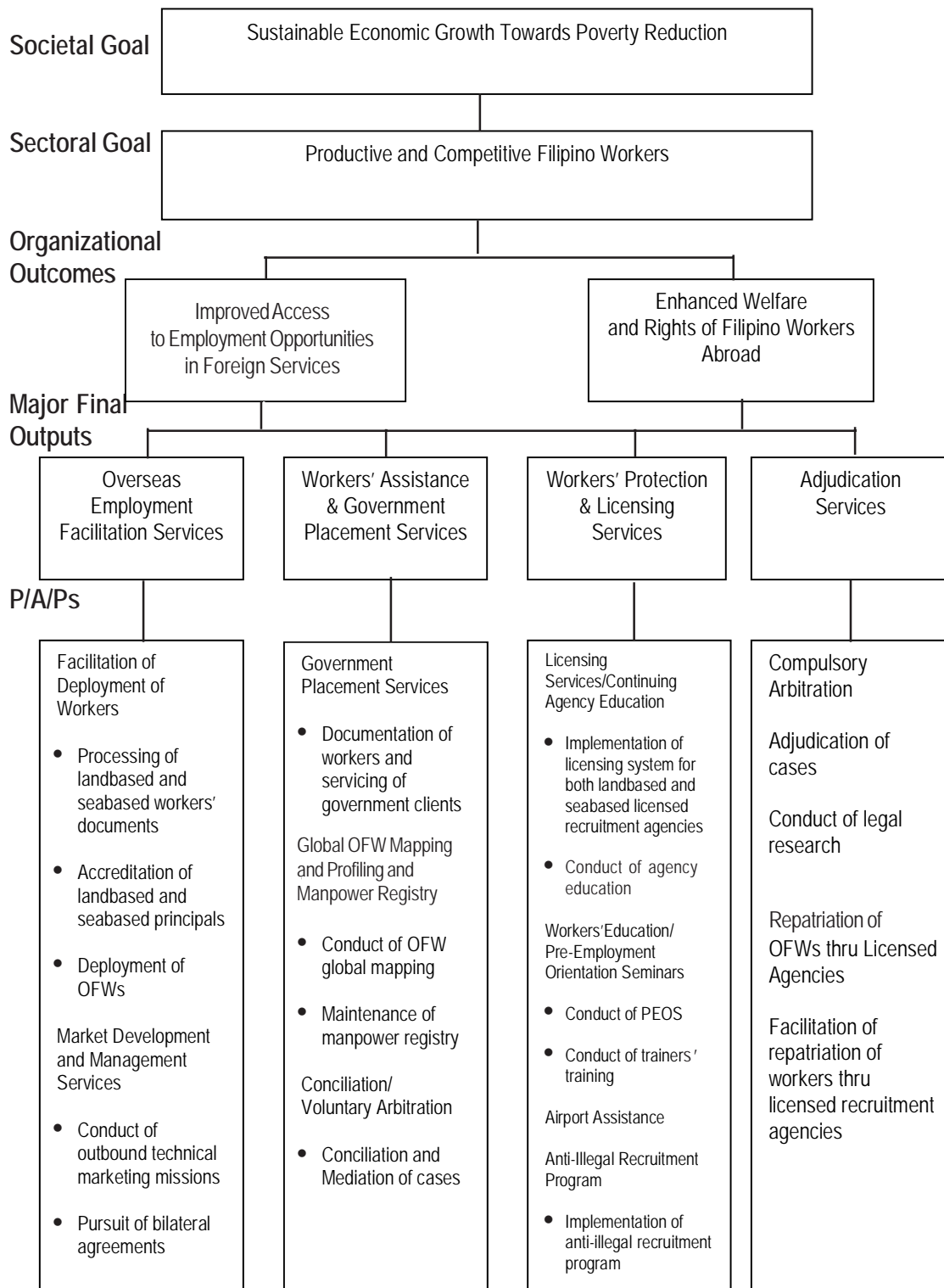
### Legal Basis

- **Executive Order No. 797** (May 1, 1982) created the Philippine Overseas Employment Administration (POEA) by integrating under it the functions of the Overseas Employment Development Board, the National Seamen Board, and the overseas employment functions of the Bureau of Employment Service.
- **Executive Order No. 247** (July 24, 1987) reorganized the POEA and expanded its powers and functions to enhance its effectiveness in responding to changing market and economic conditions and to strengthen the worker protection and regulation components of the overseas employment program.
- **Republic Act No. 8042** (June 7, 1995), Migrant Workers and Overseas Filipinos Act of 1995, instituted policies on overseas employment and established a higher standard of protection and promotion for the welfare of migrant workers, their families, and overseas Filipinos in distress.
- **Republic Act No. 9422** (April 10, 2007) amended RA 8042 and strengthened POEA's regulatory functions, expanding its duties to include providing information on the human rights of workers and ensuring that the development of OFWs are restricted to countries with whom the Philippines has bilateral agreements.

### Mandate

The Philippine Overseas Employment Administration (POEA) is mandated to manage the country's overseas employment program.

# LOGICAL FRAMEWORK (POEA)



## PERFORMANCE MEASURES AND TARGETS

(Amounts in Thousand Pesos)

Particulars	FY 2008	FY 2009	FY 2010
	Amount/Actual	Amount/Target	Amount/Target
<b>MFO 1</b>			
<b>Overseas Employment Facilitation Services</b>	<b>75,069</b>	<b>79,654</b>	<b>77,080</b>
Facilitation of Deployment of Workers to Global Market			
No. of employment contracts processed	1,464,295	1,400,000	1,470,000
No. of workers deployed	1,236,013	1,000,000	1,000,000
No. of foreign principals accredited/registered	20,953	20,000	20,000
No. of job orders approved	637,476	635,776	635,776
<b>MFO 2</b>			
<b>Workers' Assistance and Government Placement Services</b>	<b>73,793</b>	<b>75,370</b>	<b>71,567</b>
Government Placement Services			
No. of workers placed thru govt. hiring facility	4,104	5,000	5,000
Global OFW Mapping and Profiling Manpower Registry			
No. of country destinations completed for OFW mapping and profiling	36	40	40
No. of worker applicants registered	123,970	92,000	92,000
No. of skills/manpower profiled	22,143	15,000	20,000
No. of jobs fair facilitated	1,192	200	200
Conciliation Services			
No. of cases disposed	2,607	3,600	3,600
Disposition rate	97%	97%	97%
<b>MFO 3</b>			
<b>Workers' Protection and Licensing Services</b>	<b>72,767</b>	<b>76,065</b>	<b>72,091</b>
Licensing Program/Continuing Agency Education Program			
No. of new agencies issued license	82	82	66
No. of renewed licenses	708	123	234
Pre-employment Orientation Program/Employment Regulation Services			
No. of PEOS conducted	1,235	800	800
No. of participants attended	61,582	50,000	50,000
No. of PEOS trainers trained in line with IR Free LGUs	394	300	200
No. of AIR regional seminars conducted	15	15	12
Number of pre-departure orientation seminar conducted	1,139	400	400
No. of workers attended Pre-Departure Orientation Seminar	34,059	24,000	18,000

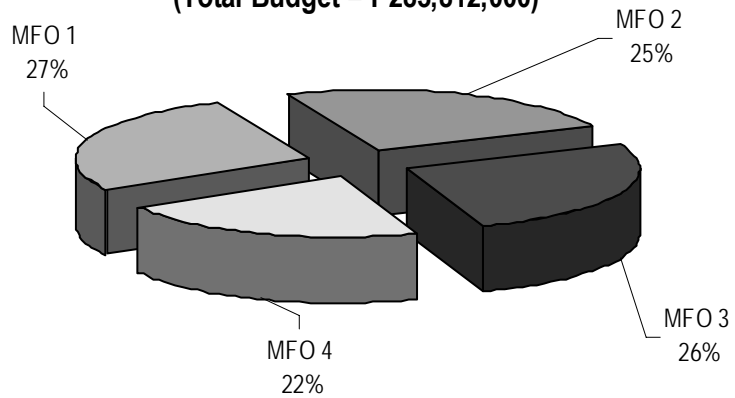
Particulars	FY 2008	FY 2009	FY 2010
	Amount/Actual	Amount/Target	Amount/Target
Anti-Illegal Recruitment Program			
No. of IR victims assisted	857	1,400	1,400
No. of surveillance operations conducted	94	100	100
No. of illegal recruitment establishment closed	10	20	20
No. of suspected illegal recruiters arrested	98	50	50
No. of IR cases filed for preliminary investigation	310	300	300
<b>MFO 4</b>			
<b>Adjudication Services</b>	<b>63,332</b>	<b>64,457</b>	<b>63,074</b>
Compulsory Arbitration			
No. of cases disposed	3,554	3,650	3,650
Disposition Rate	54%	60%	60%
Repatriation of OFWs thru Licensed Agencies			
No. of requests for repatriation acted upon	2,204	2,000	2,000
Compliance rate of licensed agencies	100%	100%	100%
<b>Total</b>	<b>284,961</b>	<b>295,546</b>	<b>283,812</b>

## FY 2010 MFO BUDGET

### By MFO/By Expense Class (In thousand pesos)

Particulars	PS	MOOE	CO	Total	% Share
<b>MFO 1:</b> Overseas Employment Facilitation Services	43,178	29,072	4,830	<b>77,080</b>	<b>27%</b>
<b>MFO 2:</b> Workers' Assistance and Government Placement Services	30,096	36,641	4,830	<b>71,567</b>	<b>25%</b>
<b>MFO 3:</b> Workers' Protection and Licensing Services	40,662	26,600	4,829	<b>72,091</b>	<b>26%</b>
<b>MFO 4:</b> Adjudication Services	32,468	25,777	4,829	<b>63,074</b>	<b>22%</b>
<b>TOTAL</b>	<b>146,404</b>	<b>118,090</b>	<b>19,318</b>	<b>283,812</b>	<b>100%</b>
<b>% SHARE</b>	<b>51%</b>	<b>42%</b>	<b>7%</b>	<b>100%</b>	

**By MFO**  
(Total Budget = P283,812,000)



**By Expense Class**  
(Total Budget = P283,812,000)

