



## Commission on the Settlement of Land Problems

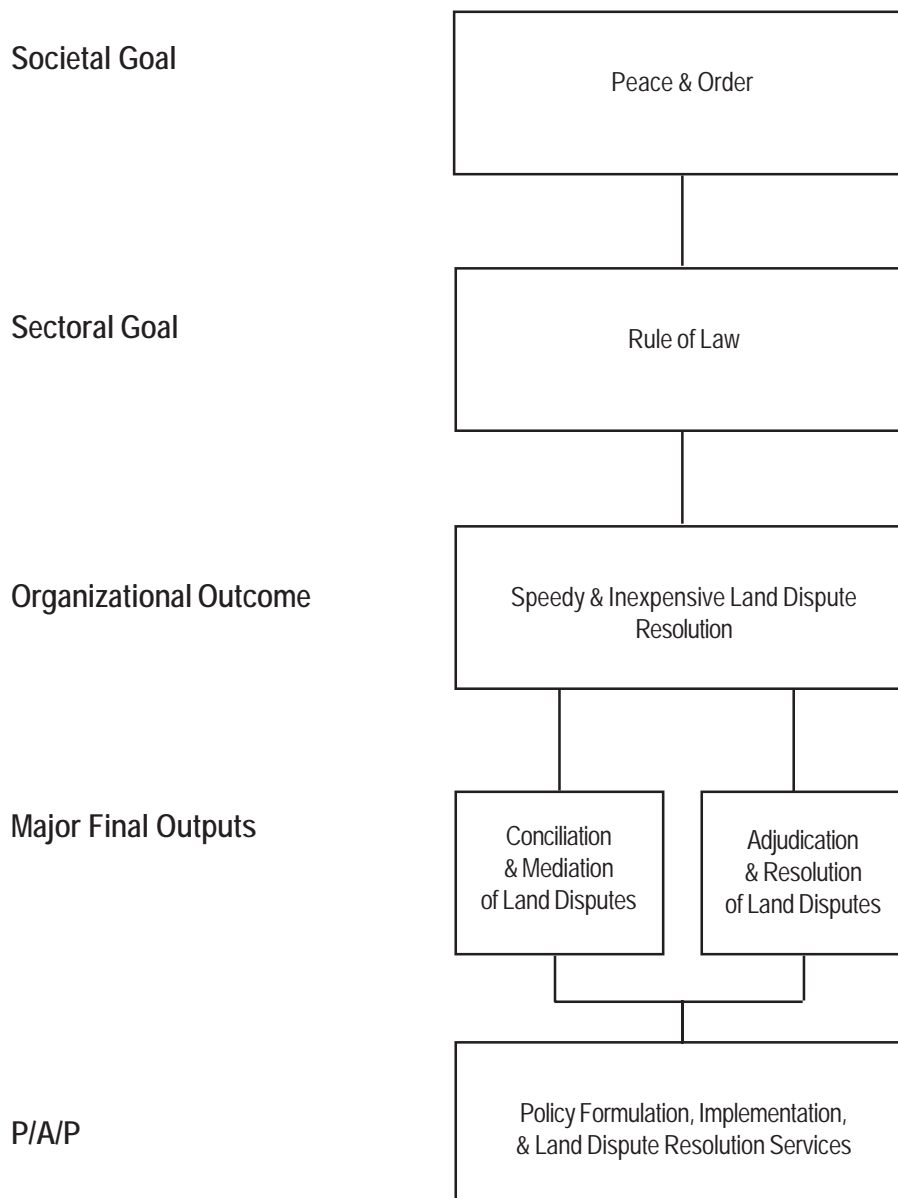
### Legal Basis

- **Executive Order No. 561** (September 21, 1979 ) created the Commission on the Settlement of Land Problems (COSLAP), taking over the functions of the defunct Presidential Action Committee on Land Problems.
- **Executive Order No. 708** (July 27, 1981) placed COSLAP under the administrative supervision of the Department of Justice (DOJ).
- **Executive Order No. 292** (July 25, 1987), or the Administrative Code of 1987, provided for COSLAP as one of the attached agencies of the DOJ.

### Mandate

The Commission on the Settlement of Land Problems (COSLAP) assists small landowners, tillers, informal settlers, and indigenous cultural minorities in settling their land problems or disputes by means of speedy and inexpensive investigation, conciliation, and adjudication.

## LOGICAL FRAMEWORK (COSLAP)



**PERFORMANCE MEASURES AND TARGETS**  
(Amounts in Thousand Pesos)

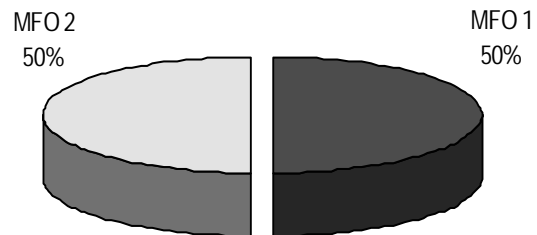
Particulars	FY 2008	FY 2009	FY 2010
	Actual / Amount	Target / Amount	Target / Amount
<b>MFO 1</b>			
<b>Conciliation &amp; mediation of land disputes</b>	<b>11,581</b>	<b>11,103</b>	<b>10,779</b>
Disposition Rate			
Percentage of cases resolved amicably	3%	4%	4.0%
No. of cases resolved amicably versus cases adjudicated.	46:1,195	60:1,240	60:1,240
<b>MFO 2</b>			
<b>Adjudication &amp; resolution of land disputes</b>	<b>11,581</b>	<b>11,103</b>	<b>10,779</b>
Amicably settled	46	60	60
Adjudicated and resolved with finality	1,141	1,100	1,100
Adjudicated and resolved awaiting finality	15	70	70
Adjudicated and resolved but referred to other agencies for implementation	39	70	70
Dismissed for lack of jurisdiction	333	400	400
<b>TOTAL</b>	<b>23,162</b>	<b>22,206</b>	<b>21,558</b>

## FY 2010 MFO Budget

### By MFO/By Expense Class (In thousand pesos)

Particulars	PS	MOOE	Total	%Share
<b>MFO 1</b> Conciliation & mediation of land disputes	9,935	844	10,779	50.00%
<b>MFO 2</b> Adjudication & resolution of land disputes	9,935	844	10,779	50.00%
<b>TOTAL</b>	<b>19,870</b>	<b>1,688</b>	<b>21,558</b>	<b>100.00%</b>
<b>% Share</b>	<b>92.17%</b>	<b>7.83%</b>	<b>100.00%</b>	

### By MFO (Total Budget = P21,558,000)



### By Expense Class (Total Budget = P21,558,000)

