



Bureau of Corrections

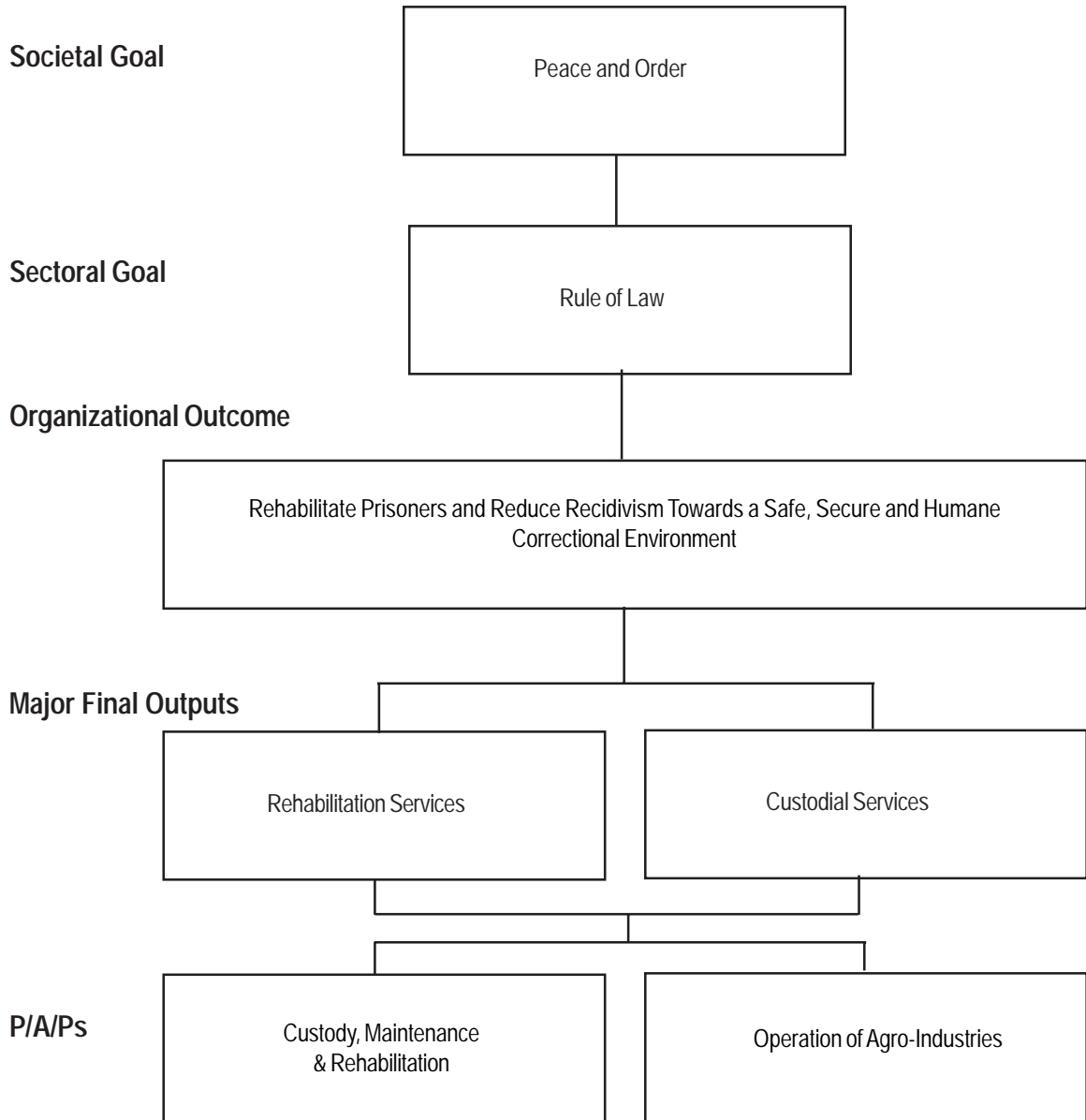
Legal Basis

- **Reorganization Act of 1907** (November 1, 1905) created the Bureau of Prisons under the Department of Public Instruction until it was transferred to the then Ministry of Justice, now Department of Justice (DOJ).
- **Executive Order No. 292** (July 25, 1987), the Administrative Code of 1987, renamed the Bureau of Prisons to Bureau of Corrections to emphasize the shift in its primary goal from punitive to rehabilitative process and, per presidential form of government, is now under DOJ.

Mandate

The Bureau of Corrections (BuCor) is mandated by law to accomplish its twin objectives of safekeeping and effective rehabilitation of national prisoners.

LOGICAL FRAMEWORK (BuCor)



PERFORMANCE MEASURES AND TARGETS
(Amounts in Thousand Pesos)

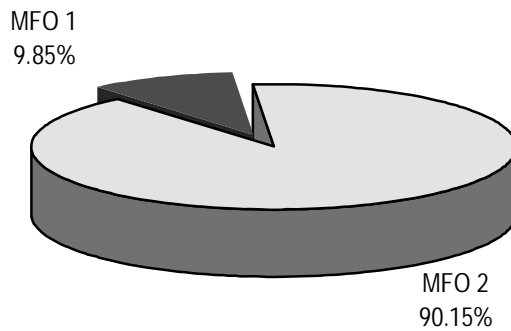
| Particulars | FY 2008 | FY 2009 | FY 2010 |
|---|------------------|--------------------|--------------------|
| | Actual / Amount | Target / Amount | Target / Amount |
| MFO 1 | | | |
| Rehabilitation Services | 117,373 | 139,125 | 140,256 |
| Inmate rehabilitation programs made available | | | |
| Education | 19,521 | 22,882 | 22,508 |
| No. of enrollees | 3,390 | 6,247 | 6,559 |
| Rate of enrollees vs. inmate population | 10% | 18% | 25% |
| Rate of graduates vs. enrollees | 28% | 20% | 20% |
| Muntinlupa Juvenile Training Center | 19,521 | 22,882 | 22,508 |
| No. of trainees | 24 | 24 | 24 |
| Drug treatment and rehabilitation | 19,521 | 22,882 | 22,509 |
| Participants in therapeutic program | 417 | 438 | 438 |
| Sports and recreation | 19,522 | 22,882 | 22,509 |
| No. of participants | 15,610 | 17,704 | 18,943 |
| Rate of participation | 48% | 50% | 51% |
| Religious programs | 19,522 | 22,882 | 22,509 |
| No. of participants | 24,906 | 100% of population | 100% of population |
| Rate of participation | 77% | 100% | 100% |
| Livelihood programs | 19,766 | 24,715 | 27,713 |
| No. of inmate workers | | | |
| - Agro-industries | 4,943 | 5,534 | 6,108 |
| - Private ventures | 4,352 | 4,908 | 5,376 |
| Employment rate | 29% | 30% | 29% |
| MFO 2 | | | |
| Custodial Services | 1,054,165 | 1,235,636 | 1,235,668 |
| Reduction in prison congestion | 5,000 | 20,000 | 40,000 |
| No. of inmates transferred to other colonies | 4,808 | 5,288 | 5,816 |
| No of inmate carpentas forwarded to BPP | 4,589 | 5,048 | 5,525 |
| Inmate escape incidents | 4,868 | 20,000 | 40,000 |
| Reduction in the rate of escapes/escapees | 100% | 100% | 100% |
| Apprehension/confiscation of contrabands | 5,000 | 11,593 | 31,593 |
| Apprehension/confiscations of contrabands | 61 | 6 | |
| Provision of basic inmate needs | 717,513 | 779,719 | 762,536 |
| (Prisoners maintained) | 34,547 | 37,604 | 36,614 |
| Daily subsistence (meal allowance) | P50/inmate | P50/inmate | P50/inmate |
| Medicine allowance (daily) | P3/inmate | P3/inmate | P3/inmate |
| Uniforms (2pcs/year/inmate) | 69,094 | 75,208 | 77,464 |
| Laundry soap (1bar/month/inmate) | 414,564 | 451,248 | 484,784 |
| Mat, mosquito net, blanket (1pc/year/inmate) | 103,641 | 112,812 | 116,196 |
| Improvement of prison facilities | | 28,280 | 20,196 |
| Custodial positions to be re-programmed | 321,784 | 376,044 | 341,343 |
| No. of inmates | 35,813 | 37,604 | 38,732 |
| No. of authorized custodial positions | 1,437 | 1,437 | 1,437 |
| Ratio of prison guards to inmates | 1:25 | 1:26 | 1:27 |
| TOTAL | 1,171,294 | 1,372,929 | 1,370,720 |

FY 2010 MFO BUDGET

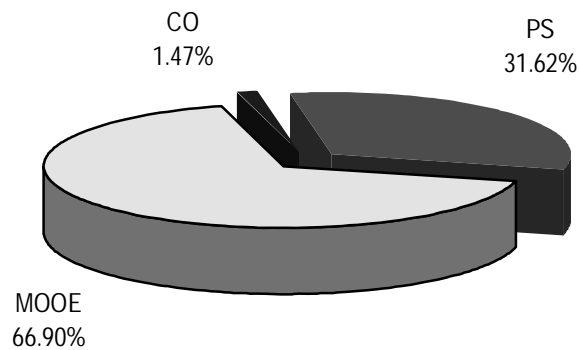
By MFO/By Expense Class (In thousand pesos)

| Particulars | PS | MOOE | CO | TOTAL | % Share |
|-------------------------|----------------|----------------|---------------|------------------|----------------|
| MFO 1 | | | | | |
| Rehabilitation Services | 43,348 | 91,704 | - | 135,052 | 9.85% |
| MFO 2 | | | | | |
| Custodial Services | 390,133 | 825,339 | 20,196 | 1,235,668 | 90.15% |
| TOTAL | 433,481 | 917,043 | 20,196 | 1,370,720 | |
| % Share | 31.62% | 66.90% | 1.47% | | 100.00% |

BY MFO (Total Budget = P1,370,720,000)



By Expense Class (Total Budget = P1,370,720,000)





Bureau of Immigration

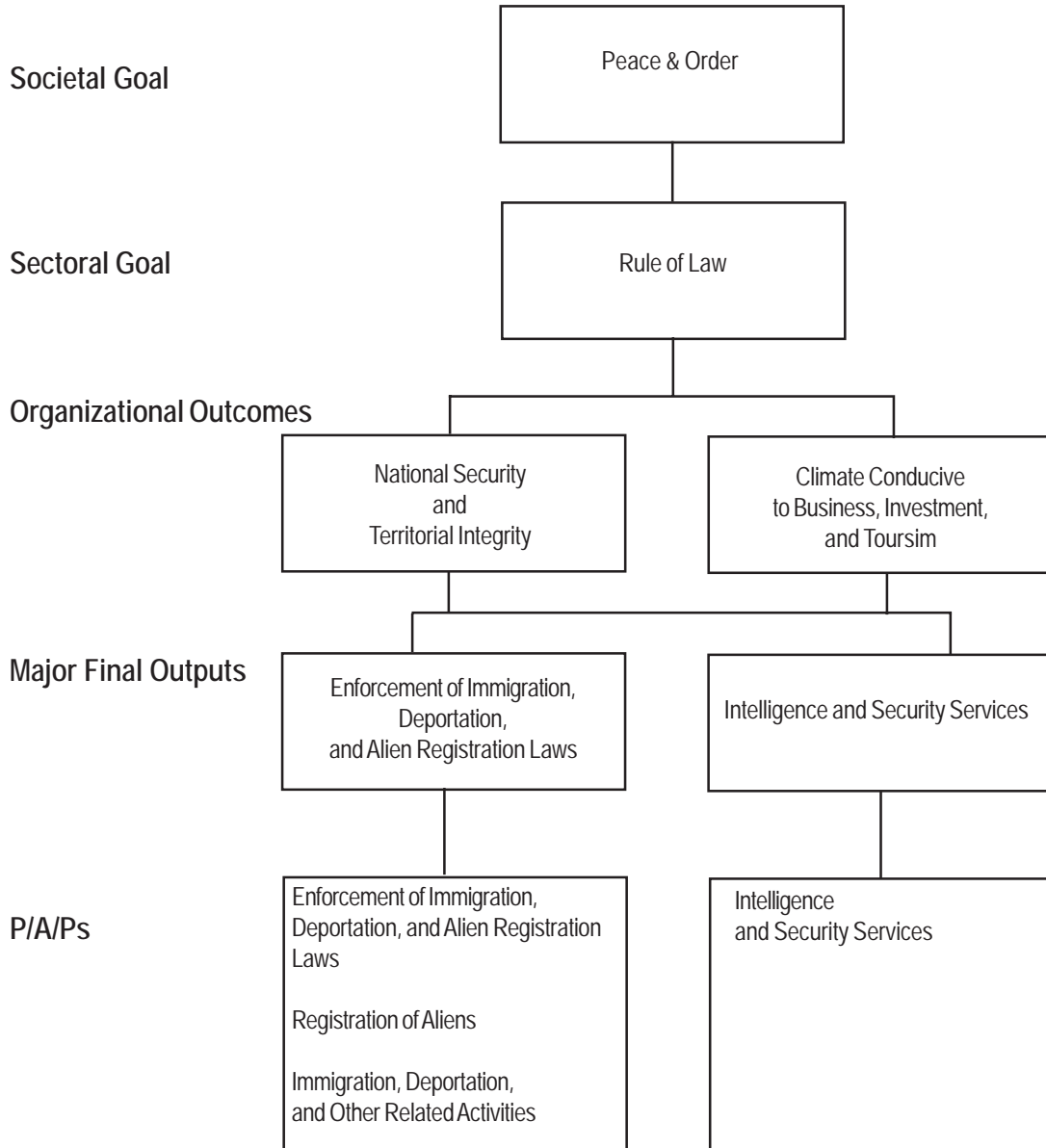
Legal Basis

- **Commonwealth Act No. 613** (August 26, 1940), or the Philippine Immigration Act of 1940, created the Bureau of Immigration as the Commission on Immigration and Deportation under the Department of Justice (DOJ).
- **Executive Order No. 292** (July 25, 1987), the Administrative Code of 1987, retains the Bureau as an attached agency of the DOJ.
- **Department Circular No. 39** (December 29, 1989) renamed the Commission on Immigration and Deportation to Bureau of Immigration.

Mandate

The Bureau of Immigration (BI) enforces and administers alien admission and registration as well as immigration and citizenship laws in accordance with the provisions of the Philippine Immigration Act of 1940, an Act to Control and Regulate the Immigration of Aliens into the Philippines.

LOGICAL FRAMEWORK (BI)



PERFORMANCE MEASURES AND TARGETS
(Amounts in Pesos)

| Particulars | FY 2008 | FY 2009 | FY 2010 |
|--|-----------------|-----------------|-----------------|
| | Actual / Amount | Target / Amount | Target / Amount |
| MFO 1 | | | |
| Enforcement of Immigration, Deportation and Alien Registration Laws | 244,539 | 247,588 | 238,185 |
| Registration transactions processed | 121,007 | 100,740 | 122,774 |
| Aliens registered | 25,972 | 23,400 | 25,972 |
| IDs issued to recognized naturalized &/or admitted Filipinos | 7,000 | 8,400 | 8,400 |
| Travel documents processed and issued | 61,636 | 50,000 | 61,636 |
| Certificate of residence issued | 25,826 | 18,000 | 25,826 |
| Duplicate of original issued | 573 | 940 | 940 |
| Immigration Transaction Processed | | | |
| No. of incoming & outgoing aliens screened and checked | 7,300,824 | 5,847,631 | 7,300,824 |
| admitted upon arrival | 3,566,562 | 2,930,052 | 3,566,562 |
| cleared for departure | 3,734,262 | 2,917,579 | 3,734,262 |
| No. of vessels boarded and inspected | 11,101 | 21,760 | 21,760 |
| boarded and inspected upon arrival | 10,059 | 10,880 | 10,880 |
| cleared on departure | 1,042 | 10,880 | 10,880 |
| No. of requests for extension of stay received & processed | 398,102 | 400,144 | 400,144 |
| MFO 2 | | | |
| Intelligence and Security Services | 125,974 | 127,546 | 122,702 |
| Intelligence cases processed | 1,229 | 1,225 | 1,354 |
| No. of cases detected | 851 | 780 | 851 |
| No. of arrests made | 91 | 70 | 91 |
| No. of illegal aliens detained | 145 | 270 | 270 |
| No. of illegal aliens deported | 142 | 105 | 142 |
| TOTAL | 370,513 | 375,134 | 360,887 |

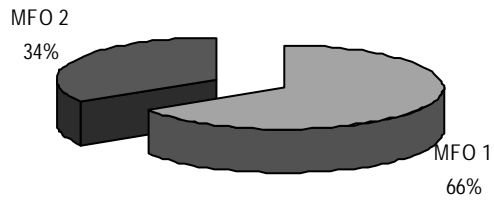
Note: FY 2008 Actual excludes obligations for CO (P271.959 M) charged to Unprogrammed Fund-General Fund Adjustment (Continuing Allotment) on the use of excess income for Information Technology equipment, furniture and fixtures, building renovation, and for MOOE (P15.935 M).

FY 2010 MFO BUDGET

By MFO/By Expense Class (In thousand pesos)

| Particulars | PS | MOOE | TOTAL | % Share |
|---|----------------|----------------|----------------|----------------|
| MFO 1 Enforcement of Immigration, Deportation, and Alien Registration Laws | 150,893 | 87,292 | 238,185 | 66.00% |
| MFO 2 Intelligence and Security Services | 77,733 | 44,969 | 122,702 | 34.00% |
| Total | 228,626 | 132,261 | 360,887 | 100.00% |
| % Share | 63.35% | 36.65% | 100.00% | |

By MFO (Total Budget = P360,887,000)



By Expense Class (Total Budget = P360,887,000)

