



DEPARTMENT OF HEALTH

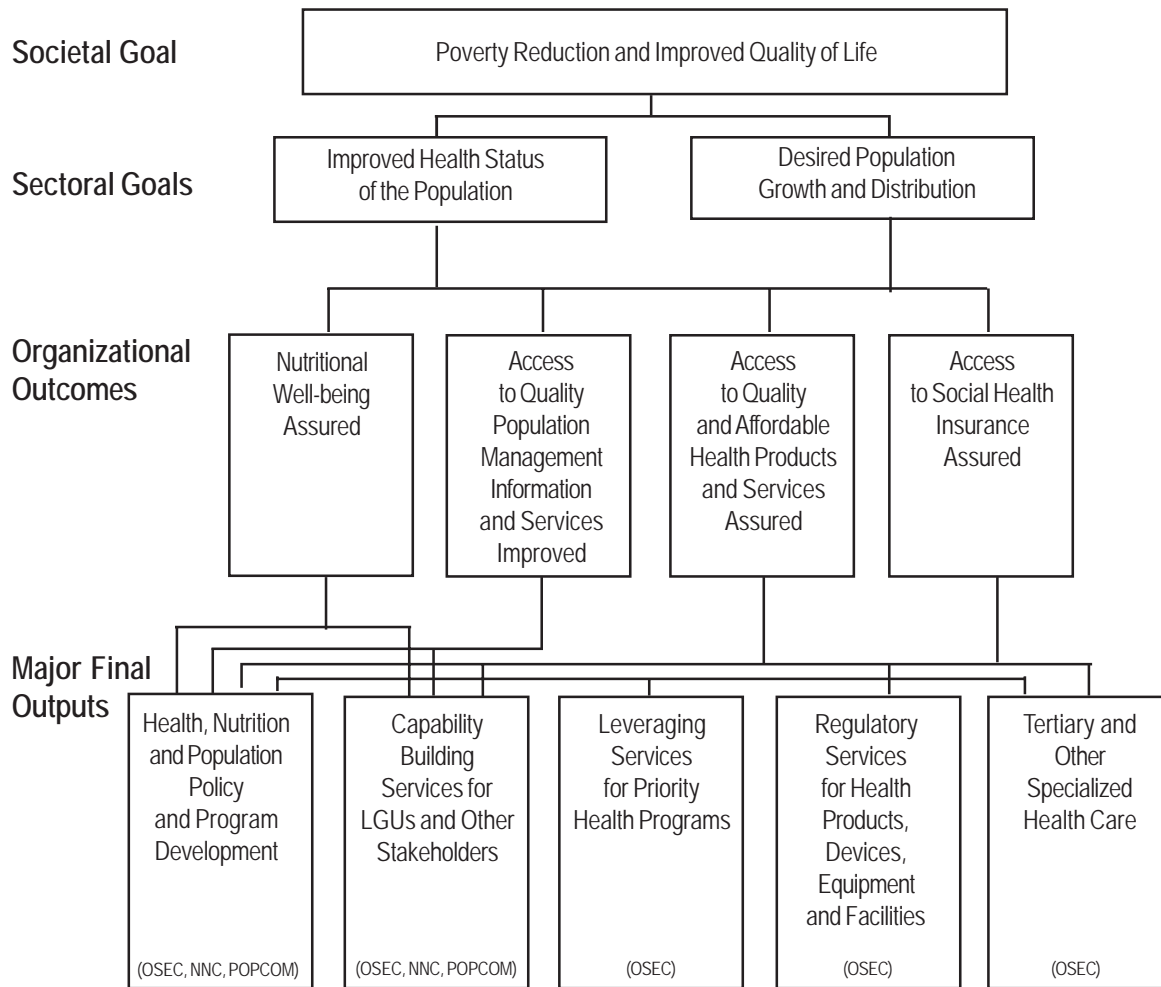
Legal Basis

- **Presidential Proclamation** (June 23, 1898) created the Board of Health in the New Republic under President Emilio Aguinaldo.
- **Executive Order No. 317** (January 1, 1941) elevated the Board of Health into the Department of Health and Public Welfare (DHPW).
- **Executive Order No. 94** (October 4, 1947), pursuant to Republic Act No. 51 or the Reorganization Act of 1946, transferred the Bureau of Public Welfare under the DHPW to the Office of the President and renamed the DHPW to Department of Health (DOH).
- **Executive Order No. 851** (December 2, 1982) reorganized the DOH to synchronize health structures and operations with the shift to parliamentary form of government whence it became known as the Ministry of Health (MOH).
- **Executive Order No. 119** (January 30, 1987) reorganized the MOH (later, under the presidential form, as Department of Health) and clustered agencies and programs under the Office of Public Health Services, Office for Hospital and Facilities Services, Office for Standards and Regulations, and Office for Management Services.
- **Executive Order No. 102** (May 21, 1999) redirected the functions and operations of the Department of Health consistent with the Administrative Code of 1987 (EO 292) and the Local Government Code of 1991 (RA 7160).

Mandate

The Department of Health (DOH) provides assistance to local government units (LGUs), people's organizations (POs), and other members of civil society in effectively implementing programs, projects and services that promote the health and well-being of every Filipino; prevent and control diseases among populations at risks; protect individuals, families and communities exposed to hazards and risks; and treat, manage, rehabilitate individuals affected by disease and disability.

LOGICAL FRAMEWORK (DOH)

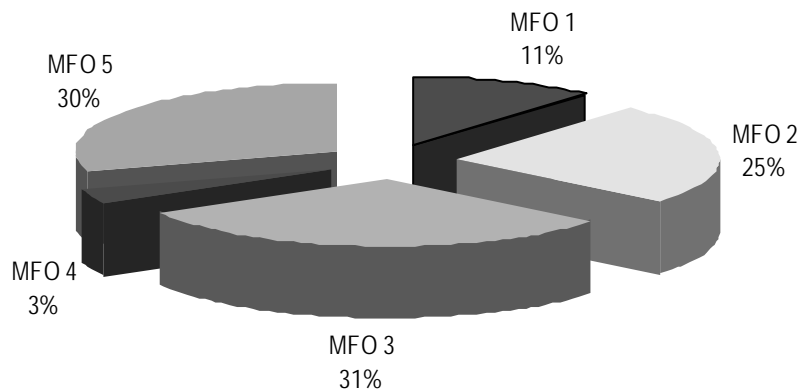


FY 2010 MFO Budget

By Agency/By MFO
(In thousand pesos)

Particulars	MFO 1	MFO 2	MFO 3	MFO 4	MFO 5	TOTAL	% Share
	Health, nutrition and population policy and program development	Capability building services for LGUs and other stakeholders	Leveraging services for priority health programs	Regulatory services for health products, devices, equipment and facilities	Tertiary and other specialized health care		
Department of Health (Office of the Secretary)	3,078,066	2,978,007	8,752,443	975,632	8,542,476	24,326,624	85%
National Nutrition Council (NNC)	19,549	3,851,985				3,871,534	14%
Commission on Population (POPCOM)	113,835	160,267				274,102	1%
TOTAL	3,211,450	6,990,259	8,752,443	975,632	8,542,476	28,472,260	100%
% Share	11%	25%	31%	3%	30%	100%	

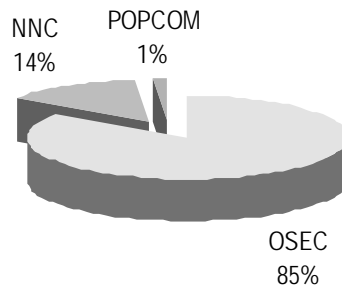
By MFO
(Total Budget = P28,472,260,000)



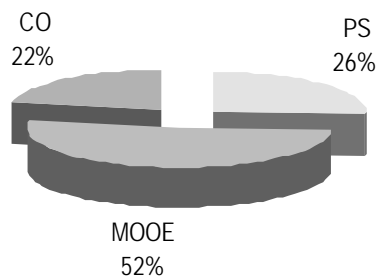
By Agency/By Expense Class
(In thousand pesos)

Particulars	PS	MOOE	CO	TOTAL	% Share
Department of Health (Office of the Secretary)	7,310,305	10,859,843	6,156,476	24,326,624	85%
National Nutrition Council (NNC)	33,338	3,838,196	-	3,871,534	14%
Commission on Population (POPCOM)	87,731	186,371	-	274,102	1%
TOTAL	7,431,374	14,884,410	6,156,476	28,472,260	100%
% Share	26%	52%	22%	100%	

By Agency
(Total Budget = P 28,472,260,000)

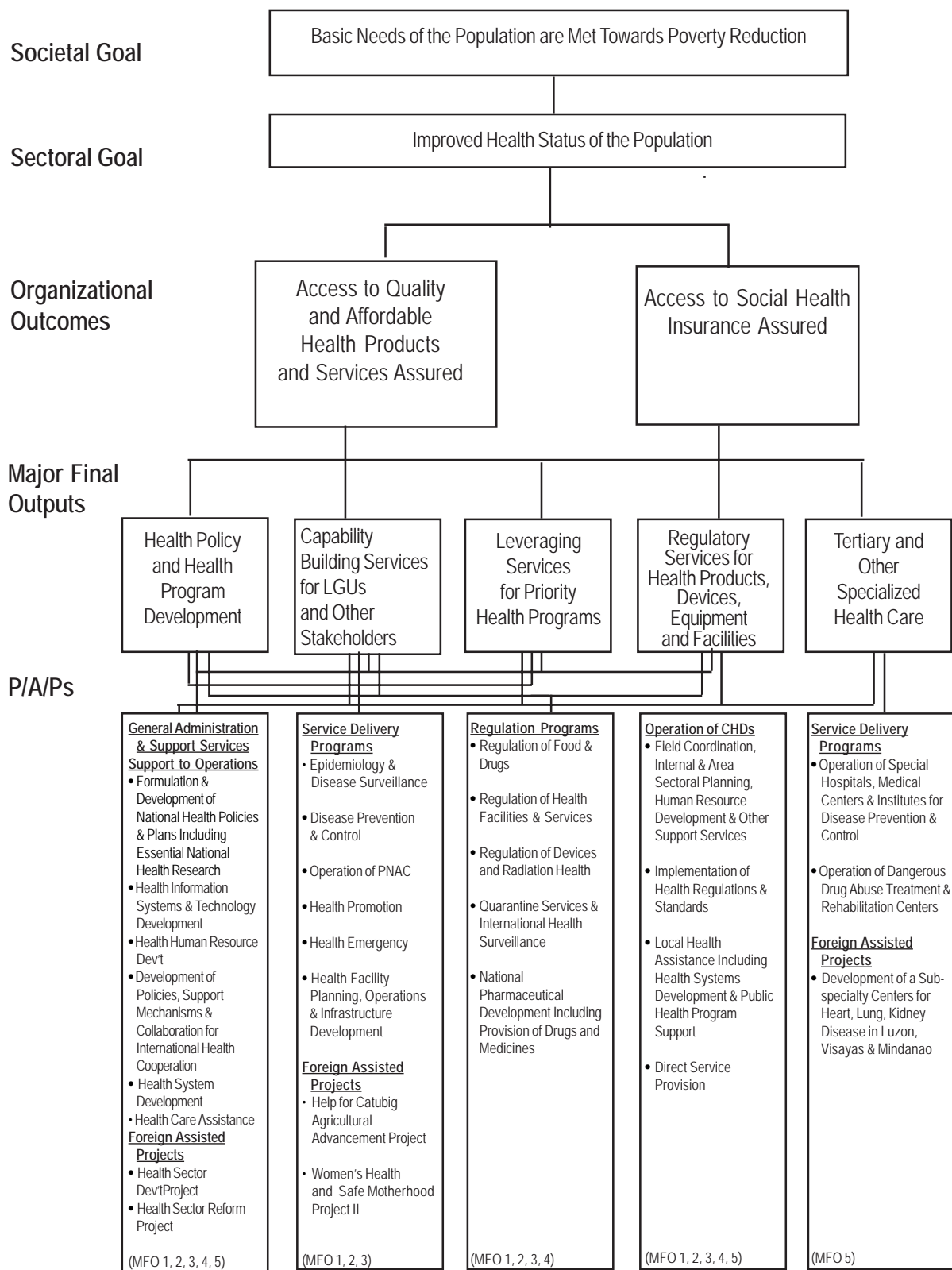


By Expense Class
(Total Budget = P 28,472,260,000)



DOH-Office of the Secretary

LOGICAL FRAMEWORK (DOH-OSEC)



PERFORMANCE MEASURES AND TARGETS
(Amounts in Thousand Pesos)

Particulars	2008	2009	2010
	Actual/ Amount	Target/ Amount	Target/ Amount
MFO 1 Health Policy and Health Program Development	1,415,521	3,095,745	3,078,066
No. of policies/standards/ programs developed	913	900	885
No. of policies monitored	581	500	480
No. of management information systems developed	137	150	145
No. of special studies and surveys conducted	193	170	145
MFO 2 Capability Building Services for LGUs and Other Stakeholders	1,395,829	2,990,694	2,978,007
No. of local health system models formulated	637	500	500
No. of advocacy activities conducted	4,902	4,500	4,500
No. of LGUs assisted to implement the systems/models developed	14,970	1,500	1,500
No. of training courses developed and implemented	2,376	2,350	2,295
No. of men and women completing training	68,522	43,000	41,750
No. of persondays of technical assistance	156,071	110,000	96,000
MFO 3 Leveraging Services for Priority Health Programs	1,761,457	6,981,377	8,752,443
Percentage budget (drugs, etc.) allocated/provided to LGUs	Increasing Percentage	Increasing Percentage	37%
Percentage of procured logistics distributed within standard time	80%	85%	80%
No. of outbreaks investigated within standard time	484	516	450
MFO 4 Regulatory Services for Health Products, Devices, Equipment and Facilities	777,063	1,003,699	975,632
For Bureau of Food and Drugs:			
No. of backlogs processed	51,667 processed	54,000 processed	50,000 processed
No. of complaints received	410 received	82 received	70 received

NOTE: Amount for FY 2010 includes the RLIP and Special Account.

Particulars	2008	2009	2010
	Actual/ Amount	Target/ Amount	Target/ Amount
For Regulation of Health Devices & Radiation:			
No. of complaints addressed within standard time	410 received	82 received	33 received
No. of complaints resolved	228	62	60
For Regulation of Health Facilities & Services			
No. of health products/establishments/ facilities/devices and technologies registered/ licensed/accredited	24,944	36,661	29,550
No. of monitoring/inspection done (food, drug establishments, health facilities, purification devices, X-ray/radiologic facilities, vessels and aircraft.)	21,777	54,933	44,000
Percentage reduction in price list of essential drugs	50%	50%	50%
MFO 5 Tertiary and Other Specialized Health Care	8,714,551	10,180,810	8,542,476
Occupancy Rate	105.54%	85%	85%
Percentage of hospital-acquired infections (Nosocomial infection)	.64%	<2%	<2%
Net death rates (death beyond 48 hrs. after admission)	2.1%	2.5% and below	2.5% and below
Cost/bed day *	838		
3rd level referral hospital			
2nd level referral hospital			
1st level referral hospital			
Infirmery/primary care			
Percentage of MOOE used for drugs and supplies *			
Percentage of filled and unfilled prescriptions by hospital pharmacy *			
Percentage of PhilHealth enrolled members (by type) patients against admissions *			
Percentage of internally generated funds for indigent patients against total budget*			
Ratio of hospital income to hospital total budget *			
Total	14,064,421	24,252,325	24,326,624

*New performance indicators

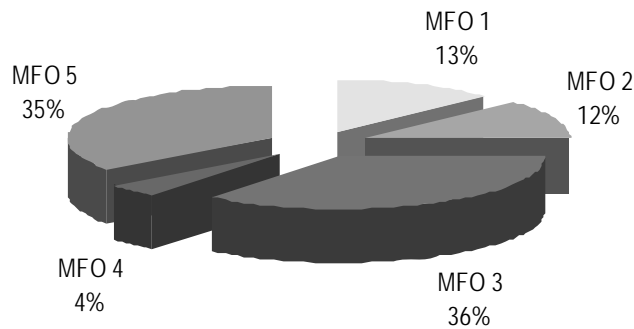
FY 2010 MFO BUDGET

By MFO/Expense Class (In thousand pesos)

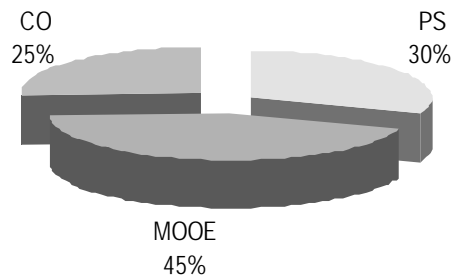
Particulars	PS	MOOE	CO	TOTAL	% Share
MFO 1 Health policy and health program development	547,589	2,162,161	368,316	3,078,066	13%
MFO 2 Capability building services for LGUs and other stakeholders	547,564	2,062,130	368,313	2,978,007	12%
MFO 3 Leveraging services for priority health programs	494,473	3,413,833	4,844,137	8,752,443	36%
MFO 4 Regulatory services for health products, devices, equipment and facilities	252,823	702,131	20,678	975,632	4%
MFO 5 Tertiary and other specialized health care	5,467,856	2,519,588	555,032	8,542,476	35%
TOTAL	7,310,305*	10,859,847 *	6,156,476	24,326,624	100%
% Share	30%	45%	25%	100%	

*Amounts for PS and MOOE include RLIP and Special Accounts.

By MFO (Total Budget = P24,326,624,000)



By Expense Class (Total Budget = P24,326,624,000)





Commission on Population

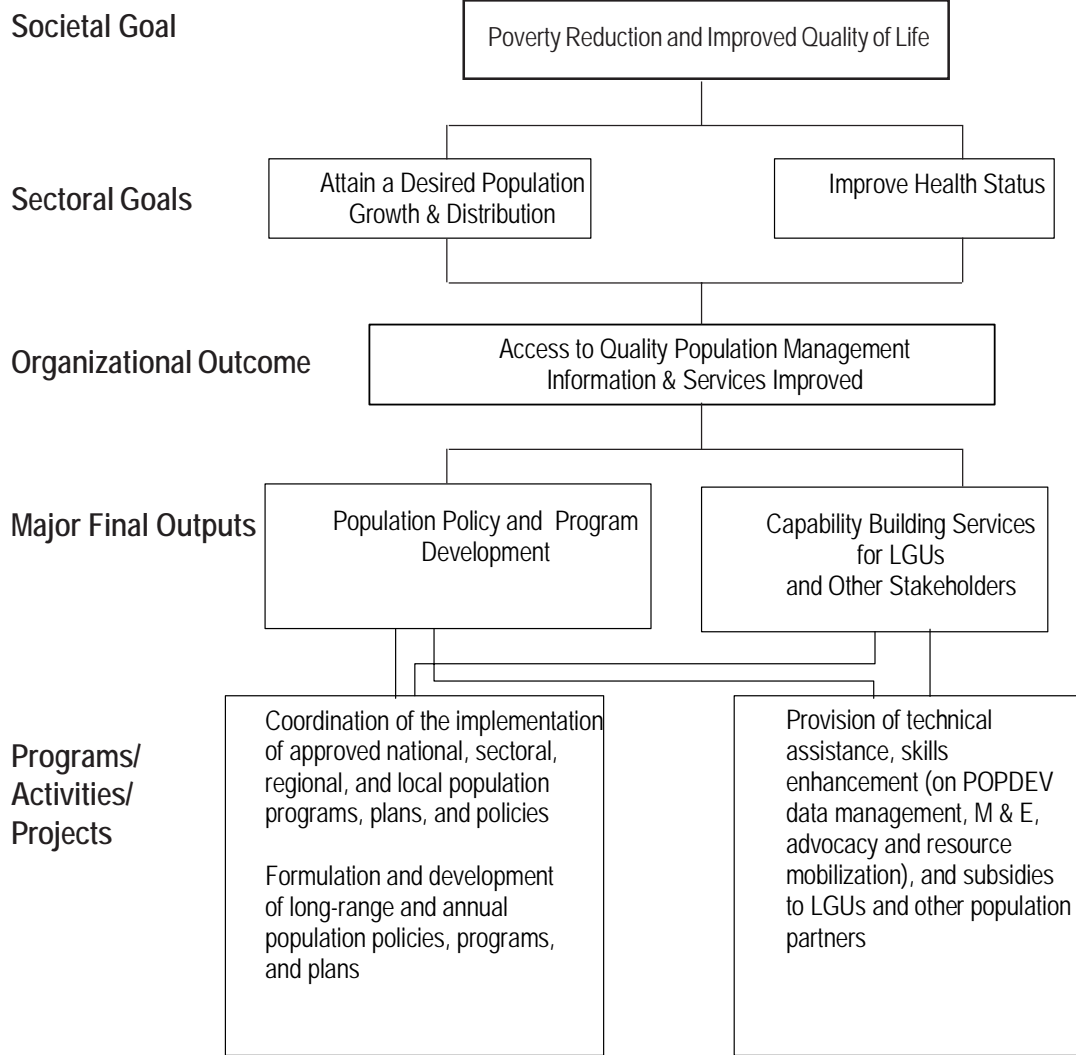
Legal Basis

- **Republic Act No. 6365** (August 16, 1971) established the National Population Program and created the Commission on Population.
- **Presidential Decree No. 79** (December 8, 1972) revised certain provisions of RA 6365, placing POPCOM under the control and supervision of the Office of the President and its purposes, objectives and functions redefined.
- **Executive Order No. 123** (January 30, 1987) reorganized the Department of Social Welfare and Development (DSWD) and made POPCOM one of its attached agencies.
- **Executive Order No. 408** (June 18, 1990) transferred POPCOM from DSWD to the Office of the President.
- **Executive Order No. 476** (August 14, 1991) attached POPCOM to the National Economic and Development Authority (NEDA) to facilitate coordination on policies and programs relative to population.
- **Executive Order No. 188** (March 24, 2003) attached POPCOM to the Department of Health (DOH).

Mandate

The Commission on Population (POPCOM) is the central policymaking, planning, coordinating, and monitoring body of the population program.

LOGICAL FRAMEWORK (POPCOM)



PERFORMANCE MEASURES AND TARGETS
(Amounts in Thousand Pesos)

Particulars	FY 2008 Actual/ Amount	FY 2009 Target/ Amount	FY 2010 Target/ Amount
MFO 1			
Population Policy and Program Development	193,069	242,949	113,835
No. of policies formulated in coordination with national and local bodies (e.g. RP/NFP, CSR, RH/FP, POPDEV Integration)	190	100	41
No. of POPDEV sensitive program/agency plans and guidelines/standards developed at the national, regional and local levels	101	87	36
No. of advocates/advocacy networks organized and maintained	571	170	70
No. of advocacy materials produced	6,936	40	16
No. of events organized/promoted at the national and local levels	134	100	41
No. of population information/knowledge centers maintained/updated	16	16	7
No. of clients/users served	7,213	5,480	2,856
MFO 2			
Capability Building Services for LGUs and Other Stakeholders	90,856	159,839	160,267
No. of LGUs with local policies, resolutions	617	311	300
No. of LGUs with ordinances formulated and implemented to support POPDEV Integration	251	131	150
No. of Technical Assistance (POPDEV, RH/NFP/RH/FP, AHYD) TOT Training Orientations Workshops Other capability building activities Policy formulation Plan development Standard/guideline setting Monitoring and evaluation Resource mobilization	* 946,958	* 159,839	* 667,354
No. of satellite information centers established/maintained	657	170	100
No. of clients served at the satellite centers	2,567	1,858	1,096
Satisfaction rate of clients served	100%	100%	100%
Total	283,925	402,788	274,102

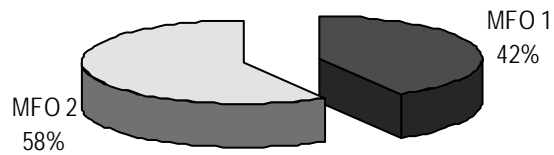
* Includes banner program of President Gloria Macapagal Arroyo for Responsible Parenthood and Natural Family Planning (RP/NFP) to support the LGUs.

FY 2010 MFO Budget

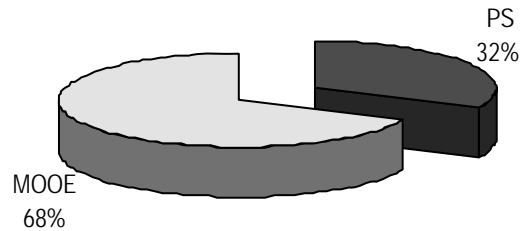
By MFO/By Expense Class
(In thousand pesos)

Particulars	PS	MOOE	CO	TOTAL	% Share
MFO 1 Population Policy and Program Development	87,731	26,104	-	113,835	42%
MFO 2 Capability Building Services for LGUs and Other Stakeholders	-	160,267	-	160,267	58%
TOTAL	87,731	186,371	-	274,102	100%
% Share	32%	68%	0%	100%	

By MFO
(Total Budget = P274,102,000)



By Expense Class
(Total Budget = P274,102,000)





National Nutrition Council

Legal Basis

- **Presidential Decree No. 491** (June 25, 1974), or the “Nutrition Act of the Philippines”, created the National Nutrition Council (NNC) under the Office of the President as the policy-making and coordinating body for nutrition.
- **Executive Order No. 234** (July 22, 1987), “Reorganization Act of the National Nutrition Council”, reaffirmed the need for an intersectoral national policy-making and coordinating body on nutrition, transferring NNC to the Department of Social Welfare and Development (DSWD).
- **Administrative Order No. 88** (August 28, 1987) transferred the NNC as an attached agency from the DSWD to the Department of Agriculture (DA), the latter having been named Chair of the NNC Governing Board.
- **Executive Order No. 472** (November 2005) named the Department of Health (DOH) as NNC Chair and transferred the NNC to DOH as an attached agency.
- **Executive Order No. 616** (April 2007) created the Anti-Hunger Task Force composed of 29 national government agencies, led by DOH through NNC, to ensure that hunger mitigation programs are in place.

Mandate

The National Nutrition Council (NNC) oversees the implementation of the hunger mitigation program. It formulates national food and nutrition policies and strategies; and coordinates planning, monitoring, and evaluation of the national nutrition program.

LOGICAL FRAMEWORK (NNC)

Societal Goal

Poverty Reduction and Improved Quality of Life

Sectoral Goal

Improved Health Status of the Population

Organizational Outcome

Nutritional Well-being of all Filipinos Assured

Major Final Outputs

Nutrition Policy and Program Development Services

Nutrition Capability Building Services for LGUs and Other Stakeholders

Programs/ Activities/ Projects

Planning and Policy Formulation - Multi-level Program Formulation

- Medium-Term Philippine Plan of Action for Nutrition
- Accelerated Hunger-Mitigation Program
- Legislative Agenda on Nutrition

Maintenance of Nutrition Management Information Systems

Development, Production, and Distribution of Printed and Audio-visual Materials and Other Technical Materials

Conduct of and Participation in Training and Conferences

- Nutrition program management
- Training on the Barangay Nutrition Scholar Program

Organization and Conduct of Special Events Toward Intensified Nutrition Advocacy

Provision of Logistics Support to Local Nutrition Programs

- Barangay Nutrition Scholar Program
- Provision of cash awards to LGUs with outstanding nutrition improvement and hunger mitigation programs

Coordination of Nutrition Program at Regional and Local Levels

Performance Indicators

- No. of policies, standards, programs developed
- No. of policies, standards, programs coordinated
- No. of policies, standards, programs monitored
- No. of special studies/surveys/program implementation reviews conducted
- No. of program management systems developed and updated
- No. of nutrition assessment/situationer reports released, disseminated

- No. of conferences, workshops, training with built-in evaluation mechanisms conducted
- No. of participants oriented/trained and monitored
- No. of local nutrition action plans formulated, locally budgeted/funded, implemented, monitored and evaluated
- No. of modules, manuals and syllabus developed, printed and distributed, by kind
- No. of nutrition IEC materials in various titles developed, aired, printed, installed and distributed

PERFORMANCE MEASURES AND TARGETS
(Amounts in Thousand Pesos)

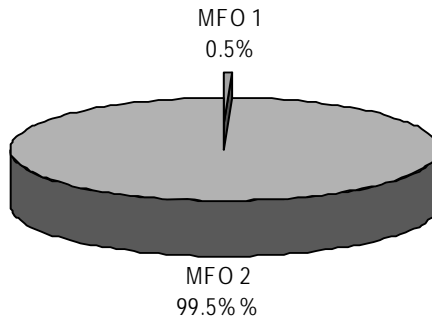
Particulars	FY 2008 Amount/ Actual	FY 2009 Amount/ Target	FY 2010 Amount/ Target
MFO 1			
Nutrition Policy and Program Development Services	15,863	15,780	19,549
No. of policies, standards, programs developed	6	61	57
No. of policies, standards, programs coordinated and monitored	478	492	548
No. of special studies/surveys program implementation reviews conducted	16	21	22
No. of program management systems developed	7	8	8
No. of nutrition assessment, situationer/reports released/disseminated	20	924	324
MFO 2			
Nutrition Capability Building Services for LGUs and Other Stakeholders	292,508	3,995,583	3,851,985
No. of conferences, workshops, training with built-in evaluation mechanisms conducted	25	2,042	1,488
No. of participants oriented/trained and monitored	111	64,681	42,476
No. of local nutrition action plans formulated, locally budgeted/funded, implemented, monitored, and evaluated	38,554	44,590	45,590
No. of modules, manuals and syllabus developed, printed and distributed, by kind	162,490	283,440	298,482
No. of nutrition IEC materials in various titles developed, aired, printed, installed, and distributed	259,456	705,335	630,601
TOTAL	308,371	4,011,363	3,871,534

FY 2010 MFO BUDGET

By MFO/By Expense Class
(In thousand pesos)

Particulars	PS	MOOE	CO	TOTAL	% Share
MFO 1					
Nutrition Policy and Program Development Services	7,709	11,840		19,549	0.5%
MFO 2					
Capability Building Services to LGUs and Other Stakeholders	25,629	3,826,356		3,851,985	99.5%
TOTAL	33,338	3,838,196	-	3,871,534	100%
% Share	0.9%	99.1%	0%	100%	

By MFO
(Total Budget = P3,871,534,000)



By Expense Class
(Total Budget = P 3,871,534,000)

