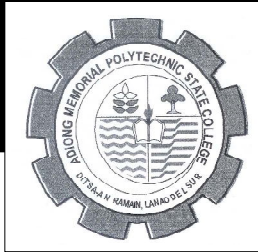


# **Autonomous Region in Muslim Mindanao (ARMM)**



## ADIONG MEMORIAL POLYTECHNIC STATE COLLEGE

### Legal Basis

- **Republic Act No. 7935** (March 1, 1995) converted the Adiong Memorial National High School, created in 1988, into a polytechnic college.
- **Republic Act No. 8651** (June 10, 1998) converted the Adiong Memorial Polytechnic College into a state college, the Adiong Memorial Polytechnic State College.

### Mandate

The **Adiong Memorial Polytechnic State College (AMPSC)** provides higher professional, technical and special instruction for special purposes and promotes research and extension services and advanced studies in agriculture, forestry, ecology and other allied courses as may be relevant to the region.

**ADIONG MEMORIAL POLYTECHNIC STATE COLLEGE**  
**PERFORMANCE MEASURES AND TARGETS**  
(Amounts in Thousand Pesos)

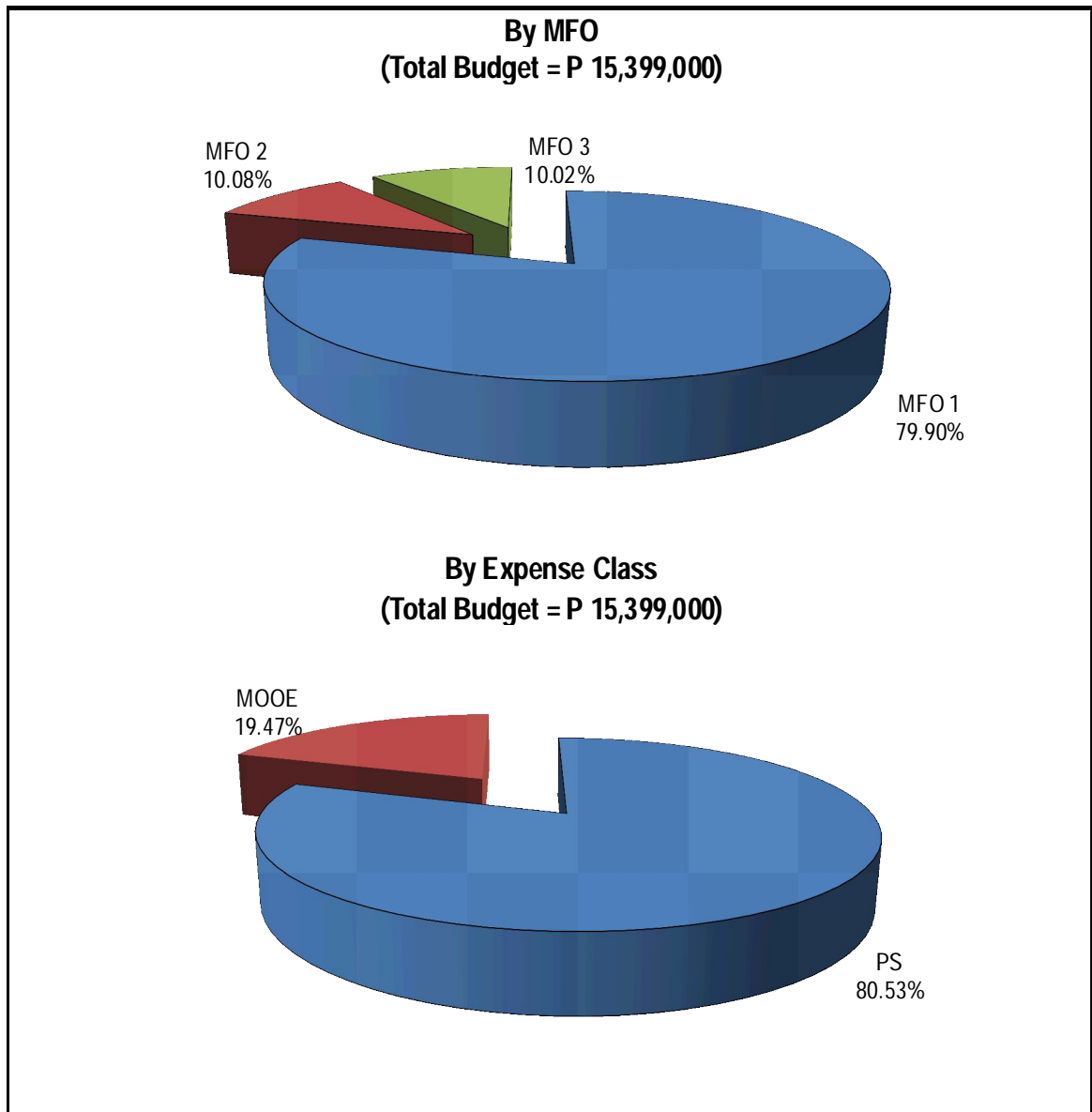
PARTICULARS	FY 2009	FY 2010	FY 2011
	Actual/ Amount	Target/ Amount	Target/ Amount
<b>MFO 1</b>			
<b>Advanced and Higher Education Services</b>	<b>1,825</b>	<b>1,973</b>	<b>12,304</b>
Number of Weighted Full Time Equivalent Students (FTES)			
Technical/ Vocational	-	-	-
Pre-Baccalaureate	-	-	-
Baccalaureate	1,683	1,821	2,083
Post-Baccalaureate	-	-	-
Bachelor of Laws	-	-	-
Doctor of Medicine	-	-	-
Masters	-	-	-
Doctor of Philosophy	0	0	276
Total	1,683	1,821	2,359
Weighted Number of Graduates			
Technical/ Vocational	-	-	-
Pre-Baccalaureate	-	-	-
Baccalaureate	112	125	138
Post-Baccalaureate	-	-	-
Bachelor of Laws	-	-	-
Doctor of Medicine	-	-	-
Masters	-	-	18
Doctor of Philosophy	-	-	-
Total	112	125	156
Gross Graduation Rates Per Program Level			
Technical/ Vocational	-	-	-
Pre-Baccalaureate	-	-	-
Baccalaureate	100%	100%	100%
Post-Baccalaureate	-	-	-
Bachelor of Laws	-	-	-
Doctor of Medicine	-	-	-
Masters	-	-	-
Doctor of Philosophy	-	-	-
Total	100%	100%	100%
Full Time Equivalent Faculty Highest Degree			
FTE Faculty with Baccalaureate as Highest Degree	22	15	11
FTE Faculty with Masters as Highest Degree	5	8	12
FTE Faculty with Doctorate as Highest Degree	1	-	-
% of FTE with Faculty Baccalaureate as Highest Degree	68%	60%	44%
% of FTE with Masters as Highest Degree	28%	32%	48%
% of FTE with Doctorate as Highest Degree	4%	8%	8%

PARTICULARS	FY 2009	FY 2010	FY 2011
	Actual/ Amount	Target/ Amount	Target/ Amount
Licensure Passing Rates (Average Per Year			
Agriculture, Forestry, Fisheries	9%	10%	12%
Education, Science and Teachers Training	53%	53%	55%
Engineering Technology and Natural Science and Math	-	-	-
Business Related Fields	-	-	-
Medical and Allied Fields	-	-	-
Other Fields	-	-	-
All Fields Combined	62%	63%	67%
% of All Programs which are Accredited at Level I			
Technical/ Vocational	-	-	-
Pre-Baccalaureate	-	-	-
Baccalaureate	-	-	-
Post-Baccalaureate	-	-	-
Bachelor of Laws	-	-	-
Doctor of Medicine	-	-	-
Masters	-	-	-
Doctor of Philosophy	-	-	-
% of All Programs which are accredited at Level 2			
Technical/ Vocational	-	-	-
Pre-Baccalaureate	-	-	-
Baccalaureate	-	-	-
Post-Baccalaureate	-	-	-
Bachelor of Laws	-	-	-
Doctor of Medicine	-	-	-
Masters	-	-	-
Doctor of Philosophy	-	-	-
% of All Programs which are accredited at Level 3			
Technical/ Vocational	-	-	-
Pre-Baccalaureate	-	-	-
Baccalaureate	-	-	-
Post-Baccalaureate	-	-	-
Bachelor of Laws	-	-	-
Doctor of Medicine	-	-	-
Masters	-	-	-
Doctor of Philosophy	-	-	-
Number of Externally Funded Scholars			
Technical/ Vocational	-	-	-
Pre-Baccalaureate	-	-	-
Baccalaureate	2	4	4
Post-Baccalaureate	-	-	-
Bachelor of Laws	-	-	-
Doctor of Medicine	-	-	-
Masters	-	-	-
Doctor of Philosophy	-	-	-
Total	2	4	4

PARTICULARS	FY 2009	FY 2010	FY 2011
	Actual/ Amount	Target/ Amount	Target/ Amount
<b>MFO 2</b>			
<b>Research Services</b>	<b>2</b>	<b>5</b>	<b>1,552</b>
Number of Research Output Published			
In Referred International Journals	-	-	-
In Other International Journals	-	-	-
In Referred National Journals	-	-	-
In Other National Journals	-	-	-
In Institutional Journals	2	5	7
Number of Research Output Disseminated or Presented			
In International For a/ Conferences	-	-	-
In National For a/ Conferences	-	-	-
In Philippine Regional For a/ Conference	-	-	-
Number of Researchers with Track Records	-	-	-
Number of Invention Patented	-	-	-
Number of Copyrights Registered	-	-	-
Number of Externally Funded Research Projects in Progress	-	-	-
<b>MFO 3</b>			
<b>Extension Services</b>	<b>17,113</b>	<b>14,176</b>	<b>1,543</b>
Number of Persons Trained			
Agricultural Extension	150	175	200
Technical/ Vocational	135	140	150
Continuing Education for Professionals	125	130	135
Others	-	-	-
Total	410	445	485
Number of Person days utilized for training			
Agricultural Extension	35	40	45
Technical/ Vocational	17	18	20
Continuing Education for Professionals	7	8	10
Others	-	-	-
Total	59	66	75
Number of LGU Assisted in Development Planning	-	-	-
<b>TOTAL</b>	<b>18,938</b>	<b>16,149</b>	<b>15,399</b>

**ADIONG MEMORIAL POLYTECHNIC STATE COLLEGE**  
**FY 2011 MFO BUDGET**  
**By MFO/By Expense Class**  
(In Thousand Pesos)

Particulars	PS	MOOE	CO	TOTAL	% Share
<b>MFO 1</b>					
Advanced and Higher Education Services	10,330	1,974	-	12,304	79.90%
<b>MFO 2</b>					
Research Services	1,043	509	-	1,552	10.08%
<b>MFO 3</b>					
Extension Services	1,028	515	-	1,543	10.02%
<b>TOTAL</b>	<b>12,401</b>	<b>2,998</b>	<b>-</b>	<b>15,399</b>	<b>100%</b>
<b>% Share</b>	<b>80.53%</b>	<b>19.47%</b>	<b>-</b>	<b>100%</b>	





## BASILAN STATE COLLEGE

### Legal Basis

- **Presidential Decree No. 1303** (February 15, 1978) established a vocational school in Basilan, the Basilan National Agro-Industrial School.
- **Batas Pambansa Blg. 363** (April 7, 1983) converted the Basilan National Agro-Industrial School into the Basilan National Agro-Industrial College.
- **Presidential Decree No. 1943** (June 27, 1984) converted the Basilan National Agro-Industrial College into the Basilan State College.

### Mandate

The **Basilan State College (BaSC)** provides higher technological, professional, and vocational instruction and training in science, agricultural and industrial fields as well as short-term technical or vocational courses. It promotes research, advanced studies, and progressive leadership in its areas of specialization.

**BASILAN STATE COLLEGE**  
**PERFORMANCE MEASURES AND TARGETS**  
(Amounts in Thousand Pesos)

PARTICULARS	FY 2009	FY 2010	FY 2011
	Actual/ Amount	Target/ Amount	Target/ Amount
<b>MFO 1</b>			
<b>Advanced and Higher Education Services</b>	<b>44,494</b>	<b>47,478</b>	<b>40,533</b>
Number of Weighted Full Time Equivalent Students (FTES)			
Technical / Vocational	1,058	1,111	1,467
Pre-Baccalaureate	-	-	-
Baccalaureate	2,230	2,343	2,163
Post-Baccalaureate	-	-	-
Bachelor of Laws	-	-	-
Doctor of Medicine	-	-	-
Masters	99	105	112
Doctor of Education	9	10	11
Total	3,396	3,569	3,753
Weighted Number of Graduates			
Technical / Vocational	387	287	326
Pre-Baccalaureate	-	-	-
Baccalaureate	388	344	354
Post-Baccalaureate	-	-	-
Bachelor of Laws	-	-	-
Doctor of Philosophy	-	-	-
Masters	22	9	19
Doctor of Education	1	6	6
Total	798	646	705
Gross Graduation Rates Per Program Level			
Technical / Vocational	49%	44%	46%
Pre-Baccalaureate	-	-	-
Baccalaureate	48%	53%	50%
Post-Baccalaureate	-	-	-
Bachelor of Laws	-	-	-
Doctor of Philosophy	-	-	-
Masters	3%	3%	3%
All Programs Levels Combined	-	-	-
Full Time Equivalent Faculty Highest Degree			
FTE Faculty with Baccalaureate as Highest Degree	5	6	6
FTE Faculty with Masters as Highest Degree	26	26	26
FTE Faculty with Doctorate as Highest Degree	18	18	18
% of FTE with Faculty Baccalaureate as Highest Degree	22	22	22
% of FTE with Masters as Highest Degree	8	8	8
% of FTE with Doctorate as Highest Degree	79	79	79



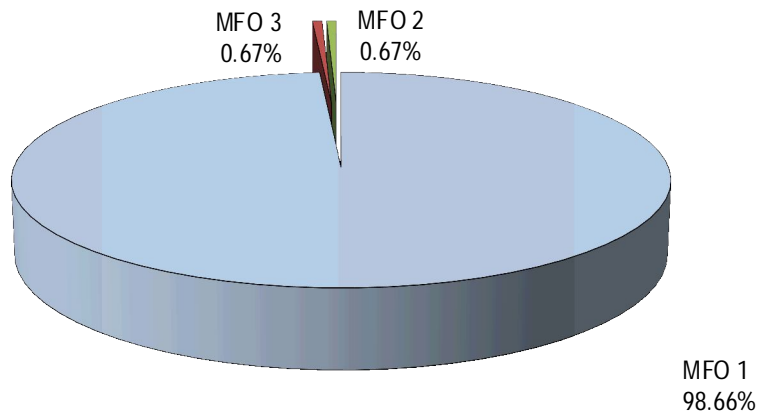
PARTICULARS	FY 2009	FY 2010	FY 2011
	Actual/ Amount	Target/ Amount	Target/ Amount
Licensure Passing Rates (Average Per Year)			
Agriculture, Forestry, Fisheries	-	-	-
Education, Science and Teacher Training	4.395%	-	-
Engineering, Technology and IT	-	-	-
Natural Science and Math	-	-	-
Business and Related	-	-	-
Medical and Allied	22.13%	-	-
Other Fields	13.94%	-	-
All Fields Combined	-	-	-
% Of All Programs which are Accredited at Level 1			
Technical / Vocational	-	-	-
Pre-Baccalaureate	-	-	-
Baccalaureate	-	-	-
Post-Baccalaureate	-	-	-
Bachelor of Laws	-	-	-
Doctor of Medicine	-	-	-
Masters	-	-	-
Doctor of Philosophy	-	-	-
% Of All Programs which are Accredited at Level 2			
Technical / Vocational	-	-	-
Pre-Baccalaureate	-	-	-
Baccalaureate	-	-	-
Post-Baccalaureate	-	-	-
Bachelor of Laws	-	-	-
Doctor of Medicine	-	-	-
Masters	-	-	-
Doctor of Philosophy	-	-	-
% Of All Programs which are Accredited at Level 3			
Technical / Vocational	-	-	-
Pre-Baccalaureate	-	-	-
Baccalaureate	-	-	-
Post-Baccalaureate	-	-	-
Bachelor of Laws	-	-	-
Doctor of Medicine	-	-	-
Masters	-	-	-
Doctor of Philosophy	-	-	-
Number of Externally - Funded Merit Scholars			
Technical / Vocational	-	-	-
Pre-Baccalaureate	-	-	-
Baccalaureate	-	-	-
Post-Baccalaureate	-	-	-
Bachelor of Laws	-	-	-
Doctor of Medicine	-	-	-
Masters	-	-	-
Doctor of Philosophy	-	-	-
Total	-	-	-

PARTICULARS	FY 2009	FY 2010	FY 2011
	Actual/ Amount	Target/ Amount	Target/ Amount
<b>MFO 2</b>			
<b>Research Services</b>	<b>275</b>	<b>275</b>	<b>275</b>
Number of Research Outputs Published	-	-	-
In Refereed International Journals	-	-	-
In Other International Journals	-	-	-
In Refereed National Journals	-	-	-
In Other National Journals	-	-	-
In Institutional Journals	-	-	-
Number of Research Outputs Dessiminated or Presented			
In International Fora/Conferences	-	-	-
In National Fora/Conferences	5	4	5
In Philippine Regional Fora/Conferences	-	-	5
Number of Researchers with Track Records	-	-	-
Number of Inventions Patented	-	-	-
Number of Copyrights Registered	-	-	-
No. of Externally-Funded Research Projects in Progress	-	-	1
<b>MFO 3</b>			
<b>Extension Services</b>	<b>275</b>	<b>275</b>	<b>275</b>
Number of Persons Trained			
Agricultural Extension	-	-	-
Technical/Vocational	60	80	90
Continuing Education for Professionals	-	-	-
Others	45	60	100
Total	105	140	190
Number of Person-Days Trained			
Agricultural Extension	-	-	-
Technical/Vocational	160 hrs.	160 hrs.	160 hrs.
Continuing Education for Professionals	-	-	-
Others	30 hrs.	60 hrs.	120 hrs.
Total	190 hrs.	240 hrs.	280 hrs.
Number of LGUs Assisted in Development Planning	-	-	-
<b>TOTAL</b>	<b>45,044</b>	<b>48,028</b>	<b>41,083</b>

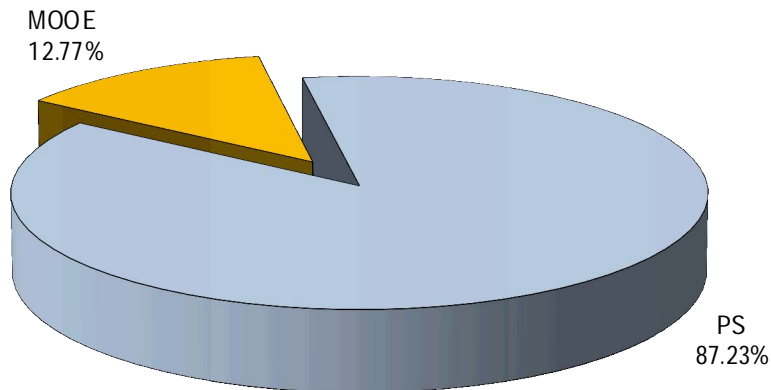
**BASILAN STATE COLLEGE**  
**FY 2011 MFO BUDGET**  
**By MFO/By Expense Class**  
(In Thousand Pesos)

Particulars	PS	MOOE	CO	TOTAL	% Share
<b>MFO 1</b>					
Advanced and Higher Education Services	35,836	4,697	-	40,533	98.66%
<b>MFO 2</b>					
Research Services	-	275	-	275	0.67%
<b>MFO 3</b>					
Extension Services	-	275	-	275	0.67%
<b>TOTAL</b>	<b>35,836</b>	<b>5,247</b>	<b>-</b>	<b>41,083</b>	<b>100%</b>
<b>% Share</b>	<b>87.23%</b>	<b>12.77%</b>	<b>-</b>	<b>100%</b>	

**By MFO**  
**(Total Budget = P41,083,000)**



**By Expense Class**  
**(Total Budget = P41,083,000)**





## MINDANAO STATE UNIVERSITY - (GSC)

### Legal Basis

**Republic Act No. 1387** (June 18, 1955), Charter of the Mindanao State University, as amended by RA 1893 in 1957 and RA 3791 in 1963, changed the name of the University of Mindanao to Mindanao State University.

### Mandate

The **Mindanao State University (MSU)** educates the youth of Mindanao, Sulu and Palawan (MINSUPALA) by offering degree programs in various fields of learning; supports businesses and industries in the region by providing their manpower requirements; and integrates the Muslim and other cultural minorities into the mainstream of national life.

**MINDANAO STATE UNIVERSITY (MSU) - GSC**  
**PERFORMANCE MEASURES AND TARGETS**  
(Amounts in thousand pesos)

PARTICULARS	FY 2009	FY 2010	FY 2011
	Actual/ Amount	Target/ Amount	Target/ Amount
<b>MFO 1</b>			
<b>Advanced and Higher Education Services</b>	<b>1,230,424</b>	<b>1,112,597</b>	<b>1,263,642</b>
Number of Weighted Full Time Equivalent Students (FTES)			
Technical / Vocational	3,011	3,193	3,111
Pre - Baccalaureate	1,311	1,422	1,404
Baccalaureate	25,127	13,098	13,884
Post Baccalaureate	63	55	61
Bachelor of Laws	465	513	654
Doctor of Medicine	215	236	250
Masters	1,333	1,251	1,536
Doctor of Philosophy	110	132	162
Total	<b>31,635</b>	<b>19,900</b>	<b>21,062</b>
Weighted Number of Graduates			
Technical / Vocational	833	1,044	1,107
Pre - Baccalaureate	994	1,912	2,057
Baccalaureate	3,803	4,003	4,250
Post Baccalaureate	106	35	60
Bachelor of Laws	112	92	101
Doctor of Medicine	20	30	40
Masters	200	208	258
Doctor of Philosophy	21	17	35
Total	<b>6,089</b>	<b>7,341</b>	<b>7,907</b>
Gross Graduation Rates Per Program Level			
Technical / Vocational	54%	47%	46%
Pre - Baccalaureate	66%	68%	81%
Baccalaureate	46%	46%	50%
Post Baccalaureate	81%	89%	90%
Bachelor of Laws	76%	61%	65%
Doctor of Medicine	77%	95%	95%
Masters	58%	62%	47%
Doctor of Philosophy	93%	60%	67%
All Program Levels Combined	<b>46%</b>	<b>39%</b>	<b>43%</b>
Full Time Equivalent Faculty Highest Degree			
FTE Faculty With Baccalaureate as Highest Degree	1,178	1,226	1,117
FTE Faculty With Masters as Highest Degree	649	689	711
FTE Faculty With Doctorate as Highest Degree	170	178	189
% of FTE Faculty With Baccalaureate as Highest Degree	45%	45%	43%
% of FTE Faculty With Masters as Highest Degree	44%	45%	44%
% of FTE Faculty With Doctorate as Highest Degree	10%	10%	10%

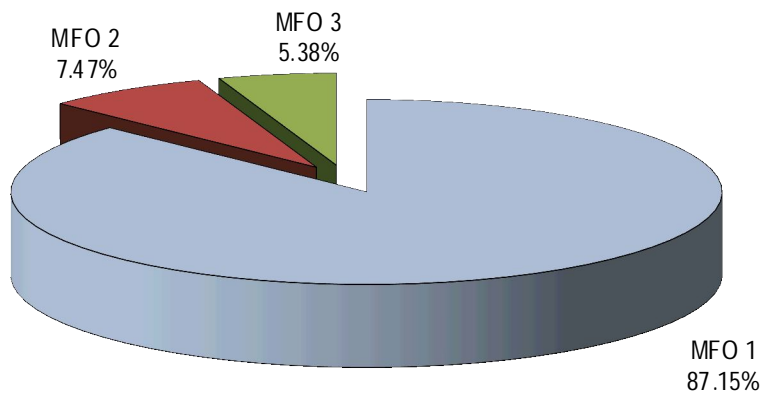
PARTICULARS	FY 2009	FY 2010	FY 2011
	Actual/ Amount	Target/ Amount	Target/ Amount
Licensure Passing Rates (Average Per Year)			
Agriculture, Forestry, Fisheries	36%	58%	57%
Education, Science and Teacher Training	73%	57%	69%
Engineering, Technology and IT	57%	62%	72%
Natural Science and Math	100%	100%	100%
Business and Related	53%	60%	72%
Medical and Allied	95%	96%	98%
Other Fields	88%	89%	90%
All Fields Combined	57%	61%	69%
% Of All Programs which are Accredited at Level 1			
Technical / Vocational	-	-	-
Pre - Baccalaureate	-	-	-
Baccalaureate	-	-	-
Post Baccalaureate	-	-	-
Bachelor of Laws	-	-	-
Doctor of Medicine	-	-	-
Masters	-	-	-
Doctor of Philosophy	-	-	-
% Of All Programs which are Accredited at Level 2			
Technical / Vocational	-	-	-
Pre - Baccalaureate	-	-	-
Baccalaureate	-	-	-
Post Baccalaureate	-	-	-
Bachelor of Laws	-	-	-
Doctor of Medicine	-	-	-
Masters	-	-	-
Doctor of Philosophy	-	-	-
% Of All Programs which are Accredited at Level 3			
Technical / Vocational	-	-	-
Pre - Baccalaureate	-	-	-
Baccalaureate	-	-	-
Post Baccalaureate	-	-	-
Bachelor of Laws	-	-	-
Doctor of Medicine	-	-	-
Masters	-	-	-
Doctor of Philosophy	-	-	-
Number of Externally - Funded Merit Scholars			
Technical / Vocational	0	9	42
Pre - Baccalaureate	60	60	11
Baccalaureate	1,401	1,503	2,459
Post Baccalaureate	0	0	3
Bachelor of Laws	0	0	0
Doctor of Medicine	0	0	0
Masters	11	9	53
Doctor of Philosophy	26	21	30
Total	<b>1,498</b>	<b>1,602</b>	<b>2,598</b>

PARTICULARS	FY 2009	FY 2010	FY 2011
	Actual/ Amount	Target/ Amount	Target/ Amount
<b>MFO 2</b>			
<b>Research Services</b>	<b>110,341</b>	<b>98,084</b>	<b>108,330</b>
Number of Research Outputs Published			
In Refereed International Journals	3	5	8
In Other International Journals	1	1	1
In Refereed National Journals	2	4	6
In Other National Journals	4	6	11
In Institutional Journals	23	25	55
Number of Research Outputs Dessiminated or Presented			
In International Fora/Conferences	7	10	10
In National Fora/Conferences	15	15	19
In Philippine Regional Fora/Conferences	26	31	34
No. of Researchers with Track Records	67	60	84
No. of Inventions Patented	5	3	3
No. of Copyrights Registered	0	5	5
No. of Externally-Funded Research Projects in Progress	13	15	21
<b>MFO 3</b>			
<b>Extension Services</b>	<b>83,853</b>	<b>73,085</b>	<b>77,944</b>
Number of Persons Trained			
Agricultural Extension	7,555	8,091	8,638
Technical/Vocational	2,449	2,771	3,157
Continuing Education for Professionals	15,682	15,903	16,362
Others	5,118	5,576	7,136
Total	<b>30,804</b>	<b>32,341</b>	<b>35,293</b>
Number of Person-Days Trained			
Agricultural Extension	59,658	62,715	67,002
Technical/Vocational	26,565	28,776	29,362
Continuing Education for Professionals	502,044	529,194	535,170
Others	35,466	36,534	37,028
Total	623,732	657,219	668,562
Number of LGUs Assisted in Development Planning	17	26	32
Infirmiry Services to Communities			
Number of Outpatients Served/Treated	6,930	7,227	7,410
Number of Persons Rendered Dental Services	470	575	675
Number of Health Information Drive	15	20	25
Peace Building Activities			
Number of Interfaith Dialogues / Fora / Summits	33	40	45
Number of Peace Building Workshops	10	12	18
PROJECTS (continuing appropriatons)	10,948	15,000	0
<b>TOTAL</b>	<b>1,435,566</b>	<b>1,298,766</b>	<b>1,449,916</b>

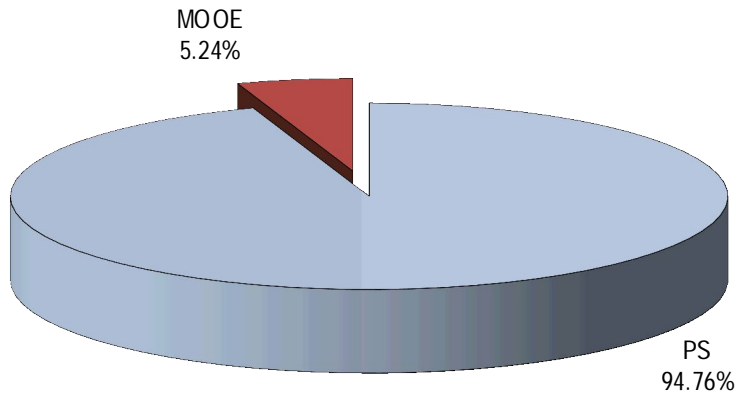
**MINDANAO STATE UNIVERSITY**  
**FY 2011 MFO BUDGET**  
**By MFO/By Expense Class**  
(In Thousand Pesos)

Particulars	PS	MOOE	CO	TOTAL	% Share
<b>MFO 1</b> Advanced and Higher Education Services	1,208,786	54,856	-	1,263,642	87.15%
<b>MFO 2</b> Research Services	95,972	12,359	-	108,331	7.47%
<b>MFO 3</b> Extension Services	69,201	8,742	-	77,943	5.38%
<b>TOTAL</b>	<b>1,373,959</b>	<b>75,957</b>	<b>-</b>	<b>1,449,916</b>	<b>100%</b>
<b>% Share</b>	<b>94.76%</b>	<b>5.24%</b>	<b>-</b>	<b>100%</b>	

**By MFO**  
**(Total Budget = P1,449,916)**  
**In Thousand Pesos**



**By Expense Class**  
**(Total Budget = P1,449,916)**  
**In Thousand Pesos**







## MSU-TAWI-TAWI COLLEGE OF TECHNOLOGY AND OCEANOGRAPHY

### Legal Basis

- **Republic Act No. 6060** (August 4, 1969) established the Sulu College of Technology and Oceanography as a unit of the Mindanao State University.
- **Batas Pambansa Blg. 197** (March 16, 1982) changed the name of the Sulu College of Technology and Oceanography into Tawi-Tawi College of Technology and Oceanography.

### Mandate

**The Mindanao State University – Tawi-Tawi College of Technology and Oceanography (MSU-TCTO)** is responsible for the rational utilization of marine resources and the optimum human resource development of the area. It is committed to support the national advocacy on food security, poverty alleviation, and peace initiatives especially in southern Philippines. It maintains its role as a catalyst for community-centered sustainable development and as an Interactive University Campus in which the community is the university and the university is the community.

**MINDANAO STATE UNIVERSITY**  
**TAWI-TAWI COLLEGE OF TECHNOLOGY AND OCEANOGRAPHY**  
**PERFORMANCE MEASURES AND TARGETS**  
(Amounts in Thousand Pesos)

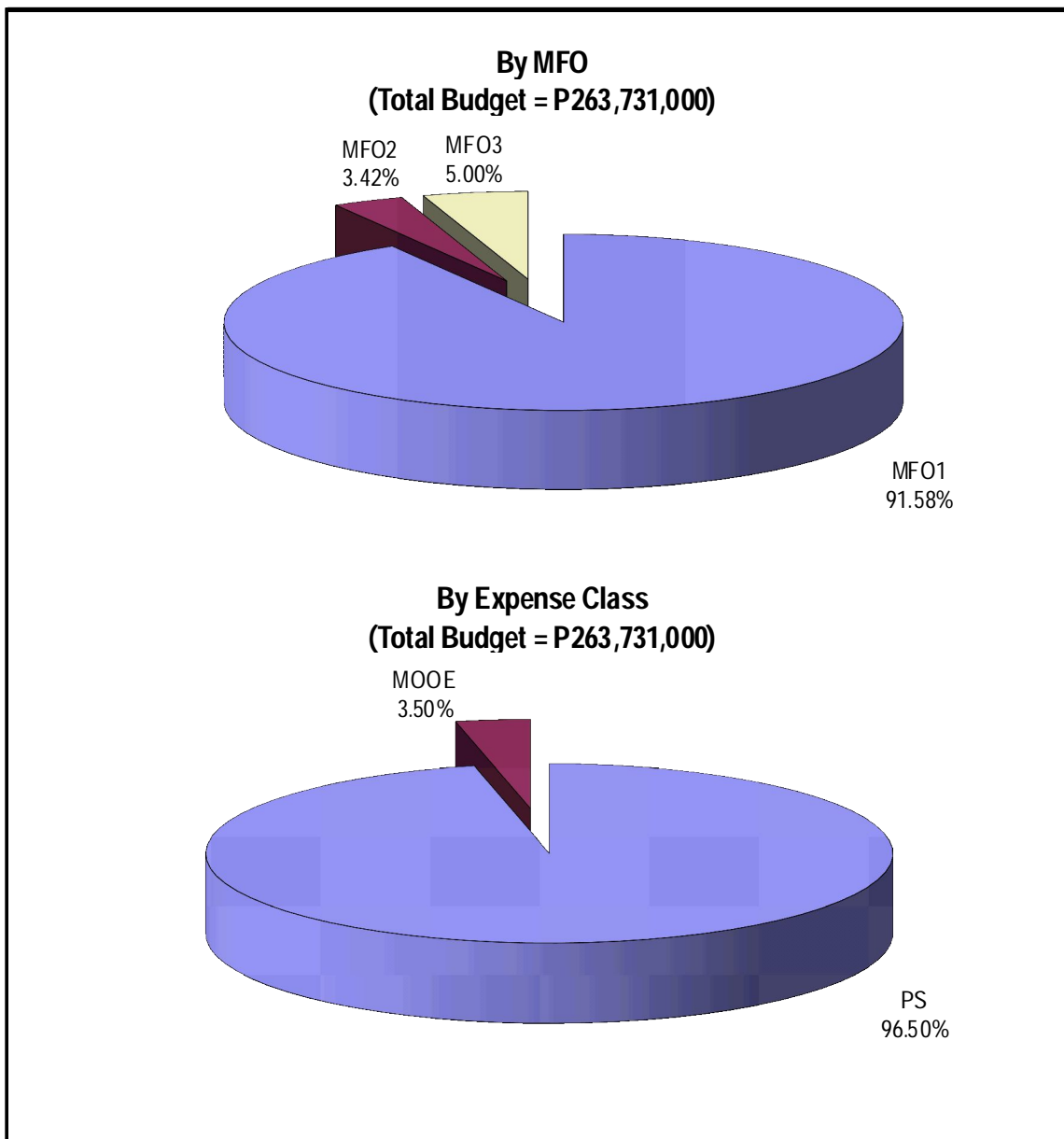
PARTICULARS	FY 2009	FY 2010	FY 2011
	Actual/ Amount	Target/ Amount	Target/ Amount
<b>MFO 1</b>			
<b>Advanced and Higher Education Services</b>	<b>280,304</b>	<b>218,952</b>	<b>241,524</b>
Number of Weighted Full Time Equivalent Students (FTES)			
Technical / Vocational	-	-	-
Pre - Baccalaureate	183	225	245
Baccalaureate	1,630	1,590	1,700
Post Baccalaureate	2	-	-
Bachelor of Laws	-	-	-
Doctor of Medicine	-	-	-
Masters	154	168	182
Doctor of Philosophy	-	-	-
Total	1,969	1,983	2,127
Weighted Number of Graduates			
Technical / Vocational	-	-	-
Pre - Baccalaureate	39	45	50
Baccalaureate	233	263	278
Post Baccalaureate	1	-	-
Bachelor of Laws	-	-	-
Doctor of Medicine	-	-	-
Masters	15	36	45
Doctor of Philosophy	-	-	-
Total	288	344	373
Gross Graduation Rates Per Program Level			
Technical / Vocational	-	-	-
Pre - Baccalaureate	42%	47%	50%
Baccalaureate	47%	51%	55%
Post Baccalaureate	-	-	-
Bachelor of Laws	-	-	-
Doctor of Medicine	-	-	-
Masters	35%	38%	45%
Doctor of Philosophy	-	-	-
All Program Levels Combined	41%	45%	47%
Full Time Equivalent Faculty Highest Degree			
FTE Faculty With Baccalaureate as Highest Degree	67	62	59
FTE Faculty With Masters as Highest Degree	50	54	55
FTE Faculty With Doctorate as Highest Degree	12	13	15
% of FTE Faculty With Baccalaureate as Highest Degree	52%	48%	46%
% of FTE Faculty With Masters as Highest Degree	39%	42%	43%
% of FTE Faculty With Doctorate as Highest Degree	9%	10%	12%

PARTICULARS	FY 2009	FY 2010	FY 2011
	Actual/ Amount	Target/ Amount	Target/ Amount
Licensure Passing Rates (Average Per Year)			
Agriculture, Forestry, Fisheries	-	50%	55%
Education, Science and Teacher Training	23%	25%	29%
Engineering, Technology and IT	-	-	-
Natural Science and Math	-	-	-
Business and Related	-	-	-
Medical and Allied	-	-	-
Other Fields	-	-	-
All Fields Combined	23%	29%	32%
% Of All Programs which are Accredited at Level 1			
Technical/ Vocational	-	-	-
Pre - Baccalaureate	-	-	-
Baccalaureate	-	2	5
Post Baccalaureate	-	-	-
Bachelor of Laws	-	-	-
Doctor of Medicine	-	-	-
Masters	-	-	-
Doctor of Philosophy	-	-	-
% Of All Programs which are Accredited at Level 2			
Technical/ Vocational	-	-	-
Pre - Baccalaureate	-	-	-
Baccalaureate	-	-	-
Post Baccalaureate	-	-	-
Bachelor of Laws	-	-	-
Doctor of Medicine	-	-	-
Masters	-	-	-
Doctor of Philosophy	-	-	-
% Of All Programs which are Accredited at Level 3			
Technical/ Vocational	-	-	-
Pre - Baccalaureate	-	-	-
Baccalaureate	-	-	-
Post Baccalaureate	-	-	-
Bachelor of Laws	-	-	-
Doctor of Medicine	-	-	-
Masters	-	-	-
Doctor of Philosophy	-	-	-
Number of Externally - Funded Merit Scholars			
Technical/ Vocational	-	-	-
Pre - Baccalaureate	5	-	15
Baccalaureate	10	-	20
Post Baccalaureate	-	-	-
Bachelor of Laws	-	-	-
Doctor of Medicine	-	-	-
Masters	-	-	-
Doctor of Philosophy	-	-	-
Total	-	-	-

PARTICULARS	FY 2009	FY 2010	FY 2011
	Actual/ Amount	Target/ Amount	Target/ Amount
<b>MFO 2</b>			
<b>Research Services</b>	<b>10,895</b>	<b>8,412</b>	<b>9,021</b>
Number of Research Outputs Published			
In Refereed International Journals	-	2	3
In Other International Journals	-	2	3
In Refereed National Journals	2	3	5
In Other National Journals	3	5	7
In Institutional Journals	5	5	10
Number of Research Outputs Dessiminated or Presented			
In International Fora/Conferences	-	2	3
In National Fora/Conferences	1	3	5
In Philippine Regional Fora/Conferences	2	3	5
No. of Resear chers with Track Records	3	3	4
No. of Inventions Patented	-	-	-
No. of Copyrights Registered	-	1	3
No. of Externally-Funded Research Projects in Progress	2	3	5
<b>MFO 3</b>			
<b>Extension Services</b>	<b>15,327</b>	<b>11,966</b>	<b>13,187</b>
Number of Persons Trained			
Agricultural Extension	70	100	150
Technical/Vocational	650	850	900
Continuing Education for Professionals	35	60	80
Others	160	215	270
Total	915	1,225	1,400
Number of Person-Days Trained			
Agricultural Extension	360	450	500
Technical/Vocational	3,850	4,600	5,000
Continuing Education for Professionals	95	150	200
Others	870	1,250	1,500
Total	5,175	6,450	7,200
Number of LGUs Assisted in Development Planning	1	3	5
<b>TOTAL</b>	<b>306,526</b>	<b>239,330</b>	<b>263,731</b>

**MSU - TAMI-TAMI COLLEGE OF TECHNOLOGY AND OCEANOGRAPHY**  
**FY 2011 MFO BUDGET**  
**By MFO/By Expense Class**  
(In Thousand Pesos)

Particulars	PS	MOOE	CO	TOTAL	% Share
<b>MFO 1</b>					
Advanced and Higher Education Services	234,133	7,391	-	241,524	91.58%
<b>MFO 2</b>					
Research Services	7,635	1,386	-	9,021	3.42%
<b>MFO 3</b>					
Extension Services	12,724	462	-	13,186	5.00%
<b>TOTAL</b>	<b>254,492</b>	<b>9,239</b>	<b>-</b>	<b>263,731</b>	<b>100%</b>
<b>% Share</b>	<b>96.50%</b>	<b>3.50%</b>	<b>-</b>	<b>100%</b>	





**SULU STATE COLLEGE**

### **Legal Basis**

**Batas Pambansa Blg. 208** (March 25, 1982) converted the Dayang Dayang Hji. Piandao Memorial High School and the Jolo Community College to the Sulu State College.

### **Mandate**

The **Sulu State College (SSC)** provides higher technological, professional, and vocational instruction and training in science, agricultural and industrial fields, as well as short-term technical or vocational courses. It also promotes research, advanced studies, and progressive leadership in its areas of specialization.

**SULU STATE COLLEGE**  
**PERFORMANCE MEASURES AND TARGETS**  
(Amounts in Thousand Pesos)

PARTICULARS	FY 2009	FY 2010	FY 2011
	Actual/ Amount	Target/ Amount	Target/ Amount
<b>MFO 1</b>			
<b>Advanced and Higher Education Services</b>	<b>44,959</b>	<b>47,924</b>	<b>44,613</b>
Number of Weighted Full Time Equivalent Students (FTES)			
Technical / Vocational	-	-	-
Pre-Baccalaureate	535	-	-
Baccalaureate	3,632	4,500	5,000
Post-Baccalaureate	-	-	-
Bachelor of Laws	-	-	-
Doctor of Medicine	23	14	20
Masters	65	41	65
Doctor of Philosophy	-	20	25
Total	4,255	4,575	5,110
Weighted Number of Graduates			
Technical / Vocational	-	-	-
Pre-Baccalaureate	-	-	-
Baccalaureate	505	609	700
Post-Baccalaureate	41	45	50
Bachelor of Laws	-	-	-
Doctor of Medicine	-	-	-
Masters	25	30	40
Doctor of Philosophy	16	20	30
Total	587	704	820
Gross Graduation Rates Per Program Level			
Technical / Vocational	-	-	-
Pre-Baccalaureate	-	-	-
Baccalaureate	14%	14%	14%
Post-Baccalaureate	-	-	-
Bachelor of Laws	-	-	-
Doctor of Medicine	-	-	-
Masters	38%	73%	-
Doctor of Philosophy	-	100	-
Total	-	-	-
Full Time Equivalent Faculty Highest Degree			
FTE Faculty with Baccalaureate as Highest Degree	20	20	25
FTE Faculty with Masters as Highest Degree	25	25	30
FTE Faculty with Doctorate as Highest Degree	18	18	20
% of FTE with Faculty Baccalaureate as Highest Degree	13%	13%	14%
% of FTE with Masters as Highest Degree	17%	17%	18%
% of FTE with Doctorate as Highest Degree	12%	12%	13%

PARTICULARS	FY 2009	FY 2010	FY 2011
	Actual/ Amount	Target/ Amount	Target/ Amount
Licensure Passing Rates (Average Per Year)			
Agriculture, Forestry, Fisheries	-	-	-
Education, Science and Teacher Training	26%	30%	50%
Engineering, Technology and IT	-	-	-
Natural Science and Math	-	-	-
Business and Related	-	-	-
Medical and Allied	50%	50%	75%
Other Fields	-	-	-
All Fields Combined	-	-	-
% Of All Programs which are Accredited at Level 1			
Technical / Vocational	-	-	-
Pre-Baccalaureate	-	-	-
Baccalaureate	-	-	-
Post-Baccalaureate	-	-	-
Bachelor of Laws	-	-	-
Doctor of Medicine	-	-	-
Masters	-	-	-
Doctor of Philosophy	-	-	-
% Of All Programs which are Accredited at Level 2			
Technical / Vocational	-	-	-
Pre-Baccalaureate	-	-	-
Baccalaureate	-	-	-
Post-Baccalaureate	-	-	-
Bachelor of Laws	-	-	-
Doctor of Medicine	-	-	-
Masters	-	-	-
Doctor of Philosophy	-	-	-
% Of All Programs which are Accredited at Level 3			
Technical / Vocational	-	-	-
Pre-Baccalaureate	-	-	-
Baccalaureate	-	-	-
Post-Baccalaureate	-	-	-
Bachelor of Laws	-	-	-
Doctor of Medicine	-	-	-
Masters	-	-	-
Doctor of Philosophy	-	-	-
Number of Externally - Funded Merit Scholars			
Technical / Vocational	-	-	-
Pre-Baccalaureate	-	-	-
Baccalaureate	-	-	-
Post-Baccalaureate	-	-	-
Bachelor of Laws	-	-	-
Doctor of Medicine	-	-	-
Masters	-	1	-
Doctor of Philosophy	-	-	-
Total	-	1	-

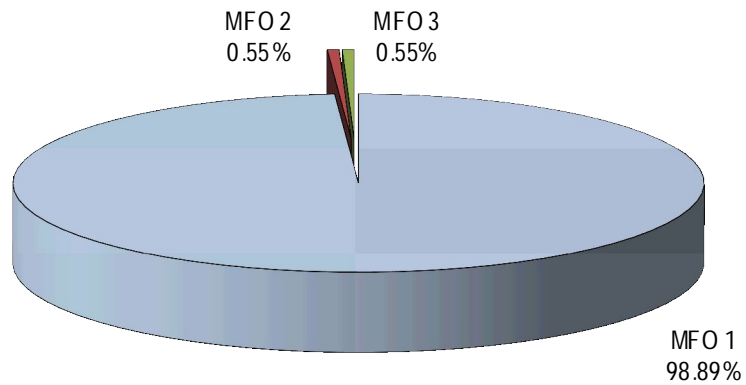


PARTICULARS	FY 2009	FY 2010	FY 2011
	Actual/ Amount	Target/ Amount	Target/ Amount
<b>MFO 2</b>			
<b>Research Services</b>	<b>250</b>	<b>250</b>	<b>250</b>
Number of Research Outputs Published			
In Refereed International Journals	-	-	-
In Other International Journals	-	-	-
In Refereed National Journals	10	10	10
In Other National Journals	-	-	-
In Institutional Journals	-	-	-
Number of Research Outputs Dessiminated or Presented			
In International Fora/Conferences	-	-	-
In National Fora/Conferences	-	-	-
In Philippine Regional Fora/Conferences	-	-	-
Number of Researchers with Track Records	14	14	14
Number of Inventions Patented	-	-	-
Number of Copyrights Registered	-	-	-
No. of Externally-Funded Research Projects in Progress	-	-	-
<b>MFO 3</b>	<b>250</b>	<b>250</b>	<b>250</b>
<b>Extension Services</b>			
Number of Persons Trained			
Agricultural Extension	2	2	2
Technical/Vocational	30	30	15
Continuing Education for Professionals	-	-	-
Others	-	-	-
Total	30	32	17
Number of Person-Days Trained			
Agricultural Extension	2	2	2
Technical/Vocational	10	10	10
Continuing Education for Professionals	-	-	-
Others	-	-	-
Total	12	12	12
Number of LGUs Assisted in Development Planning	30	30	18
<b>TOTAL</b>	<b>45,459</b>	<b>48,424</b>	<b>45,113</b>

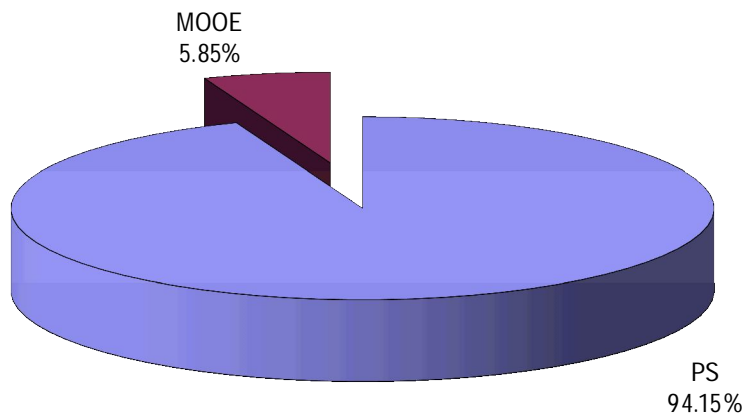
**SULU STATE COLLEGE  
FY 2011 MFO BUDGET  
By MFO/By Expense Class  
(In Thousand Pesos)**

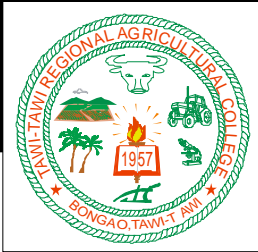
Particulars	PS	MOOE	CO	TOTAL	% Share
<b>MFO 1</b> Advanced and Higher Education Services	42,476	2,137	-	44,613	98.89%
<b>MFO 2</b> Research Services	-	250	-	250	0.55%
<b>MFO 3</b> Extension Services	-	250	-	250	0.55%
<b>TOTAL</b>	<b>42,476</b>	<b>2,637</b>	<b>-</b>	<b>45,113</b>	<b>100%</b>
<b>% Share</b>	<b>94.15%</b>	<b>5.85%</b>	<b>-</b>	<b>100%</b>	

**By MFO**  
(Total Budget = P45,113,000)



**By Expense Class**  
(Total Budget = P45,113,000)





## TAWI-TAWI REGIONAL AGRICULTURAL COLLEGE

### Legal Basis

- **Republic Act No. 3638** (June 22, 1963) converted the branch of the Lapak Agricultural High School in Tawi-Tawi, Sulu into a national regional agricultural school, the Sulu Regional Agricultural School which, in 1957, was known as the Tawi-Tawi National Agricultural College.
- **Batas Pambansa Blg 384** (April 8, 1983) converted the Sulu National Regional Agricultural School into the Tawi-Tawi Regional Agricultural College.

### Mandate

The **Tawi-Tawi Regional Agricultural College (TRAC)** provides professional, technical and special training; and promotes research, extension services, and progressive leadership in the fields of agriculture and home technology. It also offers allied courses in agriculture and applied sciences.

**TAWI-TAWI REGIONAL AGRICULTURAL COLLEGE**  
**PERFORMANCE MEASURES AND TARGETS**

(Amounts in Thousand Pesos)

PARTICULARS	FY 2009	FY 2010	FY 2011
	Actual/ Amount	Target/ Amount	Target/ Amount
<b>MFO 1</b>			
<b>Advanced and Higher Education Services</b>	<b>40,796</b>	<b>35,094</b>	<b>37,330</b>
Number of Weighted Full Time Equivalent Student (FTES)			
Technical/ Vocational	500	500	500
Pre- Baccalaureate	53	203	203
Baccalaureate	1,822	3,742	3,742
Post Baccalaureate	-	-	-
Bachelor of Laws	-	-	-
Doctor of Medicine	-	-	-
Masters	47	-	153
Doctor of Philosophy	-	-	-
Total	2,422	4,445	4,598
Weighted Number of Graduates			
Technical	68	91	91
Pre- Baccalaureate	2	62	62
Baccalaureate	230	450	450
Post Baccalaureate	-	-	-
Bachelor of Laws	-	-	-
Doctors of M edicine	-	-	-
Masters	7	33	33
Doctors of Philosophy	-	-	-
Total	307	636	636
Gross Graduation Rates Per program Level			
Technical / Vocational	95%	98%	98%
Pre- Baccalaureate	95%	98%	98%
Baccalaureate	97%	99%	99%
Post Baccalaureate	-	-	-
Bachelor of Laws	-	-	-
Doctors of Medicine	-	-	-
Master	50%	60%	60%
Doctors of Philosophy	-	-	-
All Program Levels Combined	-	-	-
Full Time Equivalent Faculty Highest Degree			
FTE Faculty With Baccalaureate	5.00	6.00	6.00
FTE Faculty With Masters as Highest Degree	65	68	68
FTE Faculty With Doctorate as Highest Degree	12	14	14
% of FTE Faculty With Baccalaureate as Highest Degree	6%	7%	7%
% of FTE Faculty With Msaters as Highest Degree	85%	88%	88%
% of FTE Faculty With Doctorate as Highest Degree	11%	12%	12%

PARTICULARS	FY 2009	FY 2010	FY 2011
	Actual/ Amount	Target/ Amount	Target/ Amount
Licensure Passing Rates (Average Per Year)			
Agriculture, Forestry, Fisheries	-	-	-
Agricultural Education, Science and Teacher Training	68%	88%	88%
Engineering, Technology and IT	100%	100%	100%
Natural Science and Math	-	-	-
Business and Related	-	-	-
Medical and Allied	-	-	-
Other Field	-	-	-
All Fileds Combined	-	-	-
% Of All Programs which are Accredited at Level 1			
Technical/ Vocational	-	-	-
Pre - Baccalaureate	-	-	-
Baccalaureate	57%	60%	60%
Post Baccalaureate	-	-	-
Bachelor of Laws	-	-	-
Doctor of Medicine	-	-	-
Masters	-	-	-
Doctor of Philosophy	-	-	-
% Of All Programs which are Accredited at Level 2			
Technical/ Vocational	-	-	-
Pre - Baccalaureate	-	-	-
Baccalaureate	-	-	-
Post Baccalaureate	-	-	-
Bachelor of Laws	-	-	-
Doctor of Medicine	-	-	-
Masters	-	-	-
Doctor of Philosophy	-	-	-
% Of All Programs which are Accredited at Level 3			
Technical/ Vocational	-	-	-
Pre - Baccalaureate	-	-	-
Baccalaureate	-	-	-
Post Baccalaureate	-	-	-
Bachelor of Laws	-	-	-
Doctor of Medicine	-	-	-
Masters	-	-	-
Doctor of Philosophy	-	-	-
Number of Externally - Funded Merit Scholars			
Technical/ Vocational	-	-	-
Pre - Baccalaureate	-	-	-
Baccalaureate	2	10	10
Post Baccalaureate	-	-	-
Bachelor of Laws	-	-	-
Doctor of Medicine	-	-	-
Masters	-	-	-
Doctor of Philosophy	-	-	-
Total	-	-	-

PARTICULARS	FY 2009	FY 2010	FY 2011
	Actual/ Amount	Target/ Amount	Target/ Amount
<b>MFO 2</b>			
<b>Research Services</b>	<b>100</b>	<b>500</b>	<b>1,000</b>
Number of Research Outputs Published			
In Refereed International Journals	-	-	-
In other International Journals	-	-	-
In refereed National Journals	-	-	-
In Other National Journals	-	-	-
In Institutional Journals	5	8	8
Number of Research Outputs Dessiminated or Presented			
In International For a/conferences	-	-	-
In National For a/Conferences	-	-	-
In Philippine Regional For a/ Conferences			
Number of Researchers with Track Records	-	-	-
Number of Inventions Patented	-	-	-
Number of Copyrigths Patented	-	-	-
No. of Externally-Funded Research Projects in Progress	-	-	-
<b>MFO 3</b>			
<b>Extention Services</b>	<b>150</b>	<b>500</b>	<b>1,000</b>
Number of Persons Trained			
Agricultural Extension	149	250	250
Technical / Vocational	-	-	-
Continuing Education for Professionals	-	-	-
Others	-	60	60
Total	149	310	310
Number of Persons-Days Trained			
Agricultural Extension	10	30	30
Technical / Vocational	-	-	-
Continuing Education for Professionals	-	15	15
Others	-	10	10
Total	10	55	55
Number of LGUs Assisted in Development Planning	2	4	4
<b>TOTAL</b>	<b>41,046</b>	<b>36,094</b>	<b>39,330</b>

**TAWI-TAWI REGIONAL AGRICULTURAL COLLEGE**  
**FY 2011 MFO BUDGET**  
**By MFO/By Expense Class**  
(In Thousand Pesos)

Particulars	PS	MOOE	CO	TOTAL	% Share
<b>MFO 1</b> Advanced and Higher Education Services	34,257	3,073	-	37,330	94.92%
<b>MFO 2</b> Research Services	500	500	-	1,000	2.54%
<b>MFO 3</b> Extension Services	500	500	-	1,000	2.54%
<b>TOTAL</b>	<b>35,257</b>	<b>4,073</b>	<b>-</b>	<b>39,330</b>	<b>100%</b>
<b>% Share</b>	<b>89.64%</b>	<b>10.36%</b>	<b>-</b>	<b>100%</b>	

