

4TH QUARTER
October-December 2024

NATIONAL GOVERNMENT DISBURSEMENT REPORT 2024

In the fourth quarter of 2024, National Government (NG) disbursements continued to demonstrate strong performance, primarily driven by increased **maintenance and other operating expenses (MOOE)**, which **rose by 16.5%**. **Personnel services (PS)** expenditures also significantly accelerated, **growing by 10.7%**, due to the implementation of the first tranche of salary adjustments under Executive Order No. 64.

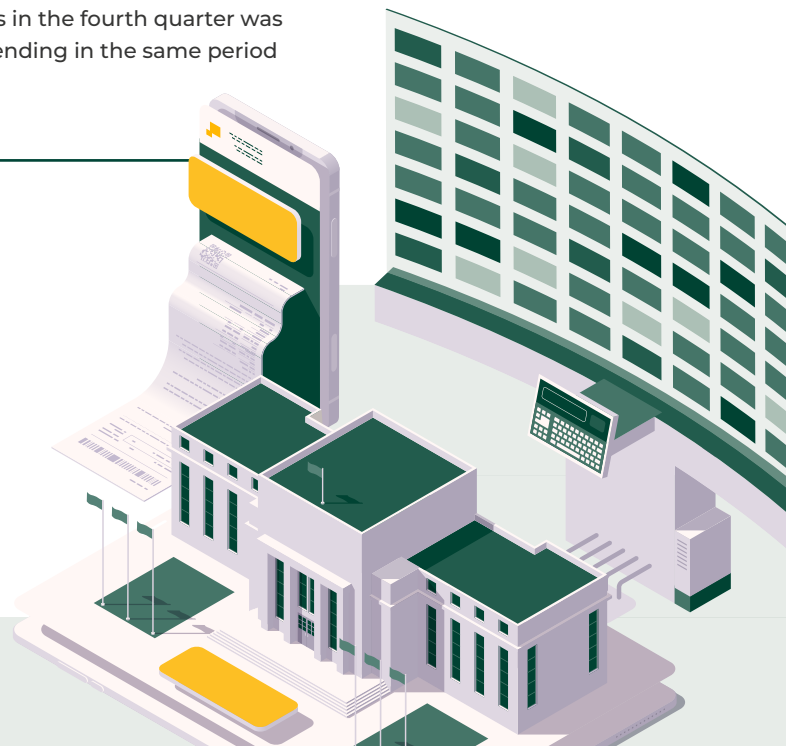
NG Disbursement Performance For the 4th Quarter (October-December 2024)

(in Pesos)

	2023	2024	Increase/(Decrease)	
			Amount	Percent
Disbursements	1.515 T	1.662 T	147.4 B	9.7
<i>Of which:</i>				
MOOE	283.8 B	330.6 B	46.8 B	16.5
PS	437.2 B	483.9 B	46.7 B	10.7
Infrastructure/ Other Capital Outlays	347.0 B	344.3 B	(2.6 B)	(0.8)

The contraction of 0.8% in infrastructure and other capital outlays in the fourth quarter was largely attributed to base effects from elevated infrastructure spending in the same period of 2023 and delays caused by weather disturbances.

Overall, the fourth quarter sustained the year's momentum in government spending, helping push full-year disbursements to Php 5.925 trillion—an 11.0% increase from 2023. While growth was tempered somewhat by reduced subsidies and net lending to government corporations, fourth quarter spending remained robust, particularly for banner social programs, agency operating requirements, and personnel-related expenditures.



NG Fiscal Performance

For the Period of January-December 2023 and 2024



(in Pesos)

Particulars	Actual		% Increase/(Decrease)
	2023	2024	
Disbursements	5.336 T	5.925 T	11.0
Revenues	3.824 T	4.419 T	15.6
Surplus/(Deficit)	(1.512 T)	(1.506 T)	(0.4)

Major Drivers of Spending for Full-Year 2024



(in Pesos)

18.4% ↑

2024: **1.085 T**
2023: 916.6 B



MOOE

Implementation of the *Pantawid Pamilyang Pilipino* Program and Social Pension for Indigent Senior Citizens of the Department of Social Welfare and Development; Payment of Public Health Emergency Benefits and Allowance (PHEBA) and Medical Assistance to Indigent and Financially Incapacitated Patients (MAIFIP) Program of the Department of Health; and preparatory works of the Commission on Elections for the 2025 Midterm Elections

6.3% ↑

2024: **1.528 T**
2023: 1.438 T



PS

Implementation of the first tranche of salary adjustments, including salary differentials covering the period January to August, following the retroactive application of the pay hike to January 1, 2024

10.1% ↑

2024: **1.327 T**
2023: 1.205 T



**Infrastructure/Other
Capital Outlays**

Sizeable disbursements for the banner infrastructure projects of the Department of Public Works and Highways and the defense modernization projects of the Department of National Defense

10.6% ↑

2024: **1.024 T**
2023: 926.1 B



**Combined Allotment
and Capital Transfers
to LGUs**

Higher National Tax Allotment shares of LGUs, as well as the release of Special Shares of LGUs in the Proceeds of National Taxes—Tobacco Shares for 2023 and 2024

Source:

[National Government Disbursement Performance Report](#)



Produced by:

Advocacy, Communications, and Training Service
Department of Budget and Management
www.dbm.gov.ph