



REPUBLIC OF THE PHILIPPINES  
**DEPARTMENT OF BUDGET AND MANAGEMENT**  
GENERAL SOLANO STREET, SAN MIGUEL, MANILA

**SUPPLEMENTAL/BID BULLETIN (SBB) NO. 1**

This SBB No. 1 dated March 01, 2022 for **Project No. DBM-2022-29, “Supply, Delivery, Fabrication, Installation, Testing, and Commissioning of Various Air-conditioning Units, Automatic Voltage Regulators, and other Accessories for the DBM Central Office (Phase 2),”** is issued pursuant to Section 22.5 of the 2016 Revised Implementing Rules and Regulations of Republic Act No. 9184, to clarify, modify or amend items in the Bidding Documents. Accordingly, this shall form an integral part of the Bidding Documents.

<p><b>Queries:</b></p> <ol style="list-style-type: none"><li>1. How many wireless remote controls are required for all the air-conditioning units?</li><li>2. Can we have a copy of the schedule or capacity of all the air-conditioning units?</li></ol>	<p><b>Clarifications:</b></p> <ol style="list-style-type: none"><li>1. One hundred twenty-three (123) remote controls are required. The quantity of wireless remote control is equal to the number of Indoor units and Single-Split Air-conditioning units, as indicated under Annex “A” (Detailed Technical Specifications) of Section VII. Technical Specifications.</li><li>2. Yes, the Equipment Schedule is herein attached for reference. Likewise attached is the Revised Plans of Annex “A” (Detailed Technical Specifications).</li></ol>
	<p><b>Note:</b></p> <p><b><u>Attached are the following documents which should be used as part of the Bidding Documents to be submitted by the bidders:</u></b></p> <ol style="list-style-type: none"><li>1. <b>Equipment Schedule; and</b></li><li>2. <b>Revised Plans</b></li></ol>

**Other matters:**

- The “No Contact Rule” shall be strictly observed. Bidders are not allowed to communicate with any member of the Bids and Awards Committee, Technical Working Group or Secretariat effective March 8, 2022 right after the opening of bids.
- For guidance and information of all concerned.

**CLARITO ALEJANDRO D. MAGSINO**

*Assistant Secretary*

*Chairperson, DBM-BAC*

# EQUIPMENT SCHEDULE



REPUBLIC OF THE PHILIPPINES  
DEPARTMENT OF BUDGET AND MANAGEMENT  
EQUIPMENT SCHEDULE

Region : DBM CO

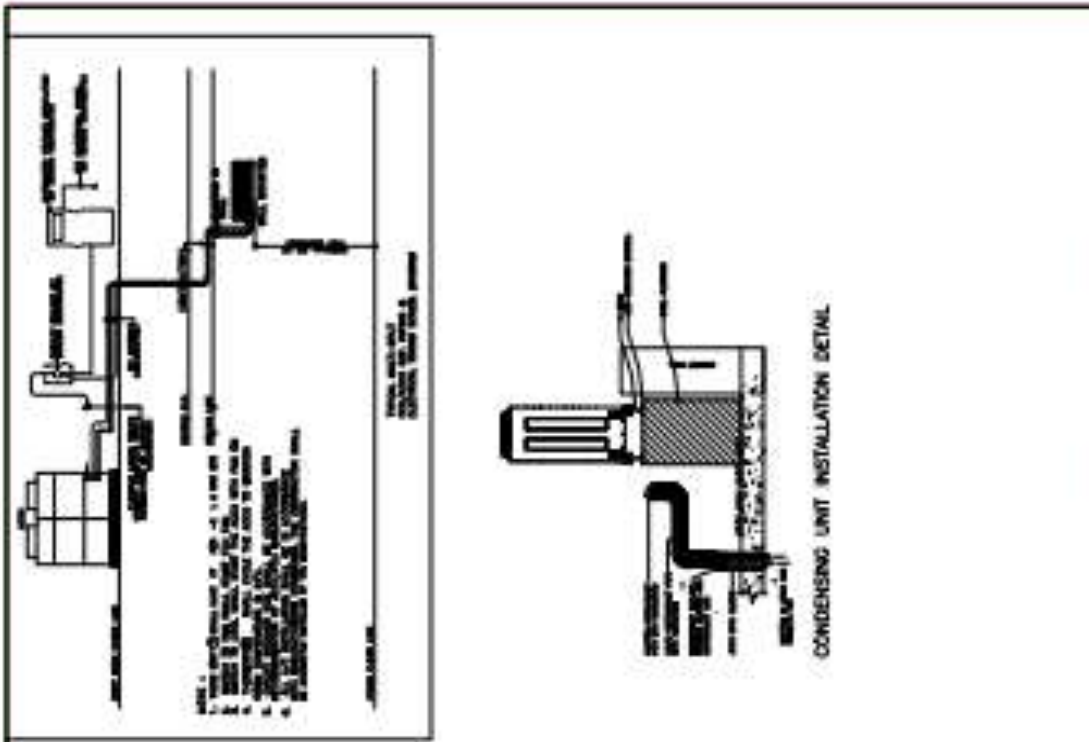
## AIR-CONDITIONING UNIT

Item	Type	System	Capacity	Unit	Totals
A	Ceiling Cassette	VRF	2.00	TR	28
B	Ceiling Cassette	VRF	2.50	TR	30
C	Ceiling Cassette	VRF	3.00	TR	4
D	Wall-Mounted	VRF	1.50	HP	1
E	Wall-Mounted	VRF	2.50	HP	1
F	Wall-Mounted	VRF	3.00	HP	15
G	Wall-Mounted	VRF	4.00	HP	24
H	Wall-Mounted	Split	1.50	HP	9
I	Wall-Mounted	Split	2.00	HP	4
J	Wall-Mounted	Split	3.00	HP	4
K	Wall-Mounted	Split	2.00	TR	2
L	Wall-Mounted	Split	3.00	TR	1
M	Window-Type	Window-Type	1.50	HP	3
N	ACCU	VRF			11

TR- Tons Refrigeration

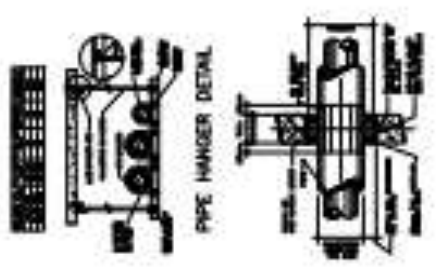
HP- Horsepower

# REVISED PLANS

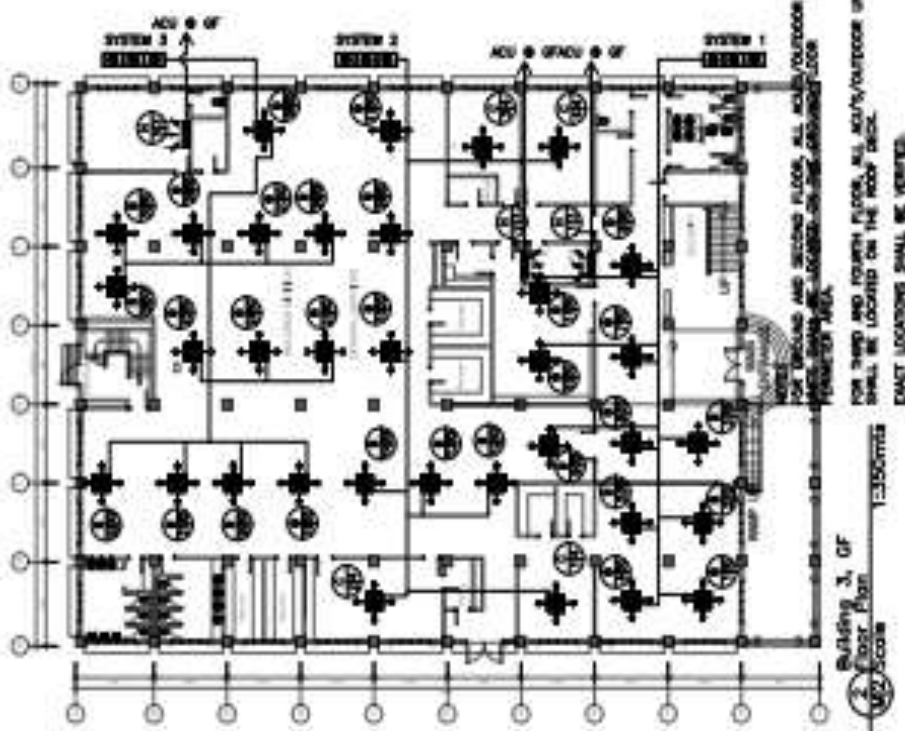
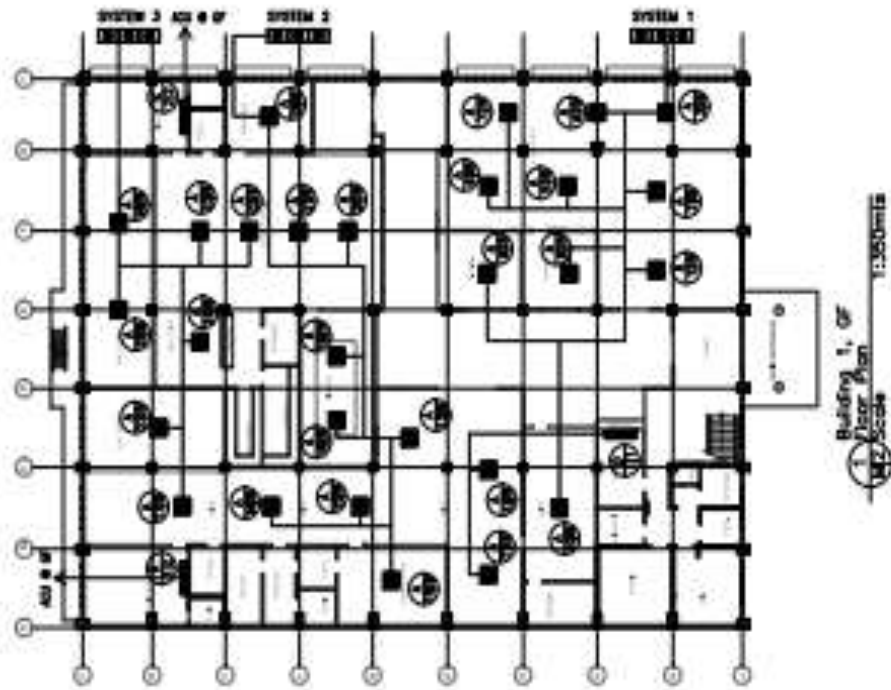


- NOTES**
1. CONDENSING UNIT SHALL BE INSTALLED OUTSIDE THE BUILDING.
  2. CONDENSING UNIT SHALL BE INSTALLED ON A CONCRETE PAD.
  3. CONDENSING UNIT SHALL BE INSTALLED ON A CONCRETE PAD.
  4. CONDENSING UNIT SHALL BE INSTALLED ON A CONCRETE PAD.
  5. CONDENSING UNIT SHALL BE INSTALLED ON A CONCRETE PAD.
  6. CONDENSING UNIT SHALL BE INSTALLED ON A CONCRETE PAD.
  7. CONDENSING UNIT SHALL BE INSTALLED ON A CONCRETE PAD.
  8. CONDENSING UNIT SHALL BE INSTALLED ON A CONCRETE PAD.
  9. CONDENSING UNIT SHALL BE INSTALLED ON A CONCRETE PAD.
  10. CONDENSING UNIT SHALL BE INSTALLED ON A CONCRETE PAD.
- LEGEND**
- CONDENSING UNIT
  - EVAPORATOR
  - COMPRESSOR
  - EXPANSION VALVE
  - PIPE
  - ELECTRICAL

- GENERAL NOTES**
1. CONDENSING UNIT SHALL BE INSTALLED OUTSIDE THE BUILDING.
  2. CONDENSING UNIT SHALL BE INSTALLED ON A CONCRETE PAD.
  3. CONDENSING UNIT SHALL BE INSTALLED ON A CONCRETE PAD.
  4. CONDENSING UNIT SHALL BE INSTALLED ON A CONCRETE PAD.
  5. CONDENSING UNIT SHALL BE INSTALLED ON A CONCRETE PAD.
  6. CONDENSING UNIT SHALL BE INSTALLED ON A CONCRETE PAD.
  7. CONDENSING UNIT SHALL BE INSTALLED ON A CONCRETE PAD.
  8. CONDENSING UNIT SHALL BE INSTALLED ON A CONCRETE PAD.
  9. CONDENSING UNIT SHALL BE INSTALLED ON A CONCRETE PAD.
  10. CONDENSING UNIT SHALL BE INSTALLED ON A CONCRETE PAD.
- SPECIFICATIONS**
1. CONDENSING UNIT SHALL BE INSTALLED OUTSIDE THE BUILDING.
  2. CONDENSING UNIT SHALL BE INSTALLED ON A CONCRETE PAD.
  3. CONDENSING UNIT SHALL BE INSTALLED ON A CONCRETE PAD.
  4. CONDENSING UNIT SHALL BE INSTALLED ON A CONCRETE PAD.
  5. CONDENSING UNIT SHALL BE INSTALLED ON A CONCRETE PAD.
  6. CONDENSING UNIT SHALL BE INSTALLED ON A CONCRETE PAD.
  7. CONDENSING UNIT SHALL BE INSTALLED ON A CONCRETE PAD.
  8. CONDENSING UNIT SHALL BE INSTALLED ON A CONCRETE PAD.
  9. CONDENSING UNIT SHALL BE INSTALLED ON A CONCRETE PAD.
  10. CONDENSING UNIT SHALL BE INSTALLED ON A CONCRETE PAD.



	CONDENSING UNIT MODEL NO. [ ] SERIAL NO. [ ]	CONDENSING UNIT MODEL NO. [ ] SERIAL NO. [ ]	CONDENSING UNIT MODEL NO. [ ] SERIAL NO. [ ]	CONDENSING UNIT MODEL NO. [ ] SERIAL NO. [ ]	CONDENSING UNIT MODEL NO. [ ] SERIAL NO. [ ]	CONDENSING UNIT MODEL NO. [ ] SERIAL NO. [ ]
	CONDENSING UNIT MODEL NO. [ ] SERIAL NO. [ ]	CONDENSING UNIT MODEL NO. [ ] SERIAL NO. [ ]	CONDENSING UNIT MODEL NO. [ ] SERIAL NO. [ ]	CONDENSING UNIT MODEL NO. [ ] SERIAL NO. [ ]	CONDENSING UNIT MODEL NO. [ ] SERIAL NO. [ ]	CONDENSING UNIT MODEL NO. [ ] SERIAL NO. [ ]



	PROJECT NO. _____ SHEET NO. _____	CONTRACT NO. _____ SHEET NO. _____	PROJECT NAME _____ SHEET NO. _____	PROJECT LOCATION _____ SHEET NO. _____	PROJECT NO. _____ SHEET NO. _____
	PROJECT NO. _____ SHEET NO. _____	CONTRACT NO. _____ SHEET NO. _____	PROJECT NAME _____ SHEET NO. _____	PROJECT LOCATION _____ SHEET NO. _____	PROJECT NO. _____ SHEET NO. _____
M 2					













