

PHILIPPINE BIDDING DOCUMENTS

Expansion of the Modernization of DBM Region 5 Facilities Phase 2 (CY 2025 Early Procurement)

Public Bidding Project ID No. 2024-001
Government of the Republic of the Philippines

**Sixth Edition
July 2020**

Preface

These Philippine Bidding Documents (PBDs) for the procurement of Infrastructure Projects (hereinafter referred to also as the “Works”) through Competitive Bidding have been prepared by the Government of the Philippines for use by all branches, agencies, departments, bureaus, offices, or instrumentalities of the government, including government-owned and/or -controlled corporations, government financial institutions, state universities and colleges, local government units, and autonomous regional government. The procedures and practices presented in this document have been developed through broad experience, and are for mandatory use in projects that are financed in whole or in part by the Government of the Philippines or any foreign government/foreign or international financing institution in accordance with the provisions of the 2016 revised Implementing Rules and Regulations (IRR) of Republic Act (RA) No. 9184.

The PBDs are intended as a model for admeasurements (unit prices or unit rates in a bill of quantities) types of contract, which are the most common in Works contracting.

The Bidding Documents shall clearly and adequately define, among others: (i) the objectives, scope, and expected outputs and/or results of the proposed contract; (ii) the eligibility requirements of Bidders; (iii) the expected contract duration; and (iv) the obligations, duties, and/or functions of the winning Bidder.

Care should be taken to check the relevance of the provisions of the PBDs against the requirements of the specific Works to be procured. If duplication of a subject is inevitable in other sections of the document prepared by the Procuring Entity, care must be exercised to avoid contradictions between clauses dealing with the same matter.

Moreover, each section is prepared with notes intended only as information for the Procuring Entity or the person drafting the Bidding Documents. They shall not be included in the final documents. The following general directions should be observed when using the documents:

- a. All the documents listed in the Table of Contents are normally required for the procurement of Infrastructure Projects. However, they should be adapted as necessary to the circumstances of the particular Project.
- b. Specific details, such as the “*name of the Procuring Entity*” and “*address for bid submission*,” should be furnished in the Instructions to Bidders, Bid Data Sheet, and Special Conditions of Contract. The final documents should contain neither blank spaces nor options.
- c. This Preface and the footnotes or notes in italics included in the Invitation to Bid, BDS, General Conditions of Contract, Special Conditions of Contract, Specifications, Drawings, and Bill of Quantities are not part of the text of the final document, although they contain instructions that the Procuring Entity should strictly follow.
- d. The cover should be modified as required to identify the Bidding Documents as to the names of the Project, Contract, and Procuring Entity, in addition to date of issue.

- e. Modifications for specific Procurement Project details should be provided in the Special Conditions of Contract as amendments to the Conditions of Contract. For easy completion, whenever reference has to be made to specific clauses in the Bid Data Sheet or Special Conditions of Contract, these terms shall be printed in bold typeface on Sections I (Instructions to Bidders) and III (General Conditions of Contract), respectively.
- f. For guidelines on the use of Bidding Forms and the procurement of Foreign-Assisted Projects, these will be covered by a separate issuance of the Government Procurement Policy Board.

TABLE OF CONTENTS

Glossary of Terms, Abbreviations, and Acronyms.....	5
Section I. Invitation to Bid	8
Section II. Instructions to Bidders.....	11
1. Scope of Bid.....	12
2. Funding Information	12
3. Bidding Requirements.....	12
4. Corrupt, Fraudulent, Collusive, Coercive, and Obstructive Practices	12
5. Eligible Bidders.....	13
6. Origin of Associated Goods	13
7. Subcontracts	13
8. Pre-Bid Conference.....	13
9. Clarification and Amendment of Bidding Documents.....	13
10. Documents Comprising the Bid: Eligibility and Technical Components.....	14
11. Documents Comprising the Bid: Financial Component	14
12. Alternative Bids	14
13. Bid Prices	15
14. Bid and Payment Currencies.....	15
15. Bid Security.....	15
16. Sealing and Marking of Bids.....	15
17. Deadline for Submission of Bids	15
18. Opening and Preliminary Examination of Bids	15
19. Detailed Evaluation and Comparison of Bids.....	16
20. Post Qualification.....	16
21. Signing of the Contract	16
Section III. Bid Data Sheet.....	17
Section IV. General Conditions of Contract	21
1. Scope of Contract.....	22
2. Sectional Completion of Works	22
3. Possession of Site.....	22
4. The Contractor’s Obligations.....	22
5. Performance Security	23
6. Site Investigation Reports	23

7.	Warranty.....	23
8.	Liability of the Contractor.....	23
9.	Termination for Other Causes.....	23
10.	Dayworks	24
11.	Program of Work.....	24
12.	Instructions, Inspections and Audits	24
13.	Advance Payment.....	24
14.	Progress Payments	24
15.	Operating and Maintenance Manuals.....	25
	Section V. Special Conditions of Contract.....	26
	Section VI. Specifications	28
	Section VII. Drawings.....	29
	Section VIII. Bill of Quantities	30
	Section IX. Checklist of Technical and Financial Documents.....	31

Glossary of Terms, Abbreviations, and Acronyms

ABC – Approved Budget for the Contract.

ARCC – Allowable Range of Contract Cost.

BAC – Bids and Awards Committee.

Bid – A signed offer or proposal to undertake a contract submitted by a bidder in response to and in consonance with the requirements of the bidding documents. Also referred to as *Proposal* and *Tender*. (2016 revised IRR, Section 5[c])

Bidder – Refers to a contractor, manufacturer, supplier, distributor and/or consultant who submits a bid in response to the requirements of the Bidding Documents. (2016 revised IRR, Section 5[d])

Bidding Documents – The documents issued by the Procuring Entity as the bases for bids, furnishing all information necessary for a prospective bidder to prepare a bid for the Goods, Infrastructure Projects, and/or Consulting Services required by the Procuring Entity. (2016 revised IRR, Section 5[e])

BIR – Bureau of Internal Revenue.

BSP – Bangko Sentral ng Pilipinas.

CDA – Cooperative Development Authority.

Consulting Services – Refer to services for Infrastructure Projects and other types of projects or activities of the GOP requiring adequate external technical and professional expertise that are beyond the capability and/or capacity of the GOP to undertake such as, but not limited to: (i) advisory and review services; (ii) pre-investment or feasibility studies; (iii) design; (iv) construction supervision; (v) management and related services; and (vi) other technical services or special studies. (2016 revised IRR, Section 5[i])

Contract – Refers to the agreement entered into between the Procuring Entity and the Supplier or Manufacturer or Distributor or Service Provider for procurement of Goods and Services; Contractor for Procurement of Infrastructure Projects; or Consultant or Consulting Firm for Procurement of Consulting Services; as the case may be, as recorded in the Contract Form signed by the parties, including all attachments and appendices thereto and all documents incorporated by reference therein.

Contractor – is a natural or juridical entity whose proposal was accepted by the Procuring Entity and to whom the Contract to execute the Work was awarded. Contractor as used in these Bidding Documents may likewise refer to a supplier, distributor, manufacturer, or consultant.

CPI – Consumer Price Index.

DOLE – Department of Labor and Employment.

DTI – Department of Trade and Industry.

Foreign-funded Procurement or Foreign-Assisted Project – Refers to procurement whose funding source is from a foreign government, foreign or international financing institution as specified in the Treaty or International or Executive Agreement. (2016 revised IRR, Section 5[b]).

GFI – Government Financial Institution.

GOCC – Government-owned and/or –controlled corporation.

Goods – Refer to all items, supplies, materials and general support services, except Consulting Services and Infrastructure Projects, which may be needed in the transaction of public businesses or in the pursuit of any government undertaking, project or activity, whether in the nature of equipment, furniture, stationery, materials for construction, or personal property of any kind, including non-personal or contractual services such as the repair and maintenance of equipment and furniture, as well as trucking, hauling, janitorial, security, and related or analogous services, as well as procurement of materials and supplies provided by the Procuring Entity for such services. The term “related” or “analogous services” shall include, but is not limited to, lease or purchase of office space, media advertisements, health maintenance services, and other services essential to the operation of the Procuring Entity. (2016 revised IRR, Section 5[r])

GOP – Government of the Philippines.

Infrastructure Projects – Include the construction, improvement, rehabilitation, demolition, repair, restoration or maintenance of roads and bridges, railways, airports, seaports, communication facilities, civil works components of information technology projects, irrigation, flood control and drainage, water supply, sanitation, sewerage and solid waste management systems, shore protection, energy/power and electrification facilities, national buildings, school buildings, hospital buildings, and other related construction projects of the government. Also referred to as *civil works or works*. (2016 revised IRR, Section 5[u])

LGUs – Local Government Units.

NFCC – Net Financial Contracting Capacity.

NGA – National Government Agency.

PCAB – Philippine Contractors Accreditation Board.

PhilGEPS - Philippine Government Electronic Procurement System.

Procurement Project – refers to a specific or identified procurement covering goods, infrastructure project or consulting services. A Procurement Project shall be described, detailed, and scheduled in the Project Procurement Management Plan prepared by the agency which shall be consolidated in the procuring entity's Annual Procurement Plan. (GPPB Circular No. 06-2019 dated 17 July 2019)

PSA – Philippine Statistics Authority.

SEC – Securities and Exchange Commission.

SLCC – Single Largest Completed Contract.

UN – United Nations.

Section I. Invitation to Bid

REPUBLIC OF THE PHILIPPINES
DEPARTMENT OF BUDGET AND MANAGEMENT
Regional Office V
Bicol Regional Government Center, Rawis, Legazpi City

Invitation to Bid for the Expansion of the Modernization of DBM Region 5 Facilities Phase 2 (CY 2025 Early Procurement)

1. The **Department of Budget and Management Regional Office V (DBM ROV)**, through the **FY 2025 National Expenditure Program (NEP)** intends to apply the sum of **Five Million Pesos (P5,000,000.00)** being the Approved Budget for the Contract (ABC) to payments under the contract for the **Expansion of the Modernization of DBM Region 5 Facilities Phase 2 (CY 2025 Early Procurement)** with **Public Bidding Project ID No. 2024-001**. Bids received in excess of the ABC shall be automatically rejected at bid opening.
2. The **DBM ROV** now invites bids for the above Procurement Project. Completion of the Works is required **within 120 calendar days**. Bidders should have completed a contract similar to the Project. The description of an eligible bidder is contained in the Bidding Documents, particularly, in Section II (Instructions to Bidders).
3. Bidding will be conducted through open competitive bidding procedures using non-discretionary “*pass/fail*” criterion as specified in the 2016 revised Implementing Rules and Regulations (IRR) of Republic Act (RA) No. 9184.
4. Interested bidders may obtain further information from **DBM ROV** and inspect the **Bidding Documents** at the address given below from **Monday to Friday (excluding holidays), 9:00 A.M. to 4:00 P.M.**
5. A complete set of Bidding Documents may be acquired by interested bidders on **October 30, 2024 to November 20, 2024**, from the given address and website/s below and *upon payment of the applicable fee for the Bidding Documents, pursuant to the latest Guidelines issued by the GPPB, in the amount of P5,000.00*. The Procuring Entity shall allow the bidder to present its proof of payment for the fees *via physical presentation of the original copy of the Official Receipt (OR)*.
6. The **DBM ROV** will hold a Pre-Bid Conference on **November 8, 2024, 10:00 A.M.** at **the Main Conference Room, 3rd Floor, DBM ROV** which shall be open to prospective bidders.
7. Bids must be duly received by the BAC Secretariat through manual submission at the office address as indicated below on or before **10:00 A.M. of November 20, 2024**. Late bids shall **not** be accepted.
8. All bids must be accompanied by a bid security in any of the acceptable forms and in the amount stated in **ITB Clause 16**.

9. Bid opening shall **immediately follow after the deadline of submission of bids**, at the given address below. Bids will be opened in the presence of the bidders' representatives who choose to attend the activity.
10. The **DBM ROV** reserves the right to reject any and all bids, declare a failure of bidding, or not award the contract at any time prior to contract award in accordance with Sections 35.6 and 41 of the 2016 revised Implementing Rules and Regulations (IRR) of RA No. 9184, without thereby incurring any liability to the affected bidder or bidders.
11. For further information, please refer to:

Ms. Regeal A. Bueno
DBM ROV BAC Secretariat
DBM ROV, Bicol Regional Government Center, Rawis, Legazpi City
dbm_ro5@dbm.gov.ph
09564272476/09217565110

12. You may visit the following websites:

For downloading of Bidding Documents: [www.dbm.gov.ph]

October 30, 2024



FEBRUARY E. MANUEL
BAC Chairperson

Section II. Instructions to Bidders

1. Scope of Bid

The Procuring Entity, **DBM ROV** invites Bids for the **Expansion of the Modernization of DBM Region 5 Facilities Phase 2 (Early Procurement Activity for 2025)**, with **Public Bidding Project ID No. 2024-001**.

The Procurement Project (referred to herein as “Project”) is for the construction of Works, as described in Section VI (Specifications).

2. Funding Information

2.1. The GOP through the source of funding as indicated below for **FY 2025** in the amount of **P5,000,000.00**.

2.2. The source of funding is **FY 2025 National Expenditure Program**.

3. Bidding Requirements

The Bidding for the Project shall be governed by all the provisions of RA No. 9184 and its 2016 revised IRR, including its Generic Procurement Manual and associated policies, rules and regulations as the primary source thereof, while the herein clauses shall serve as the secondary source thereof.

Any amendments made to the IRR and other GPPB issuances shall be applicable only to the ongoing posting, advertisement, or invitation to bid by the BAC through the issuance of a supplemental or bid bulletin.

The Bidder, by the act of submitting its Bid, shall be deemed to have inspected the site, determined the general characteristics of the contracted Works and the conditions for this Project, such as the location and the nature of the work; (b) climatic conditions; (c) transportation facilities; (c) nature and condition of the terrain, geological conditions at the site communication facilities, requirements, location and availability of construction aggregates and other materials, labor, water, electric power and access roads; and (d) other factors that may affect the cost, duration and execution or implementation of the contract, project, or work and examine all instructions, forms, terms, and project requirements in the Bidding Documents.

4. Corrupt, Fraudulent, Collusive, Coercive, and Obstructive Practices

The Procuring Entity, as well as the Bidders and Contractors, shall observe the highest standard of ethics during the procurement and execution of the contract. They or through an agent shall not engage in corrupt, fraudulent, collusive, coercive, and obstructive practices defined under Annex “I” of the 2016 revised IRR of RA No. 9184 or other integrity violations in competing for the Project.

5. Eligible Bidders

- 5.1. Only Bids of Bidders found to be legally, technically, and financially capable will be evaluated.
- 5.2. The Bidder must have an experience of having completed a Single Largest Completed Contract (SLCC) that is similar to this Project, equivalent to at least fifty percent (50%) of the ABC adjusted, if necessary, by the Bidder to current prices using the PSA's CPI, except under conditions provided for in Section 23.4.2.4 of the 2016 revised IRR of RA No. 9184.

A contract is considered to be "similar" to the contract to be bid if it has the major categories of work stated in the **BDS**.
- 5.3. For Foreign-funded Procurement, the Procuring Entity and the foreign government/foreign or international financing institution may agree on another track record requirement, as specified in the Bidding Document prepared for this purpose.
- 5.4. The Bidders shall comply with the eligibility criteria under Section 23.4.2 of the 2016 IRR of RA No. 9184.

6. Origin of Associated Goods

There is no restriction on the origin of Goods other than those prohibited by a decision of the UN Security Council taken under Chapter VII of the Charter of the UN.

7. Subcontracts

- 7.1. The Bidder may subcontract portions of the Project to the extent allowed by the Procuring Entity as stated herein, but in no case more than fifty percent (50%) of the Project.

The Procuring Entity has prescribed that:

- a. Subcontracting is not allowed.

8. Pre-Bid Conference

The Procuring Entity will hold a pre-bid conference for this Project on the specified date and time and at its physical address **as indicated in paragraph 6 of the IB**.

9. Clarification and Amendment of Bidding Documents

Prospective bidders may request for clarification on and/or interpretation of any part of the Bidding Documents. Such requests must be in writing and received by the Procuring Entity, either at its given address or through electronic mail indicated in the **IB**, at least ten (10) calendar days before the deadline set for the submission and receipt of Bids.

10. Documents Comprising the Bid: Eligibility and Technical Components

- 10.1. The first envelope shall contain the eligibility and technical documents of the Bid as specified in **Section IX. Checklist of Technical and Financial Documents**.
- 10.2. If the eligibility requirements or statements, the bids, and all other documents for submission to the BAC are in foreign language other than English, it must be accompanied by a translation in English, which shall be authenticated by the appropriate Philippine foreign service establishment, post, or the equivalent office having jurisdiction over the foreign bidder's affairs in the Philippines. For Contracting Parties to the Apostille Convention, only the translated documents shall be authenticated through an apostille pursuant to GPPB Resolution No. 13-2019 dated 23 May 2019. The English translation shall govern, for purposes of interpretation of the bid.
- 10.3. A valid special PCAB License in case of Joint Ventures, and registration for the type and cost of the contract for this Project. Any additional type of Contractor license or permit shall be indicated in the **BDS**.
- 10.4. A List of Contractor's key personnel (e.g., Project Manager, Project Engineers, Materials Engineers, and Foremen) assigned to the contract to be bid, with their complete qualification and experience data shall be provided. These key personnel must meet the required minimum years of experience set in the **BDS**.
- 10.5. A List of Contractor's major equipment units, which are owned, leased, and/or under purchase agreements, supported by proof of ownership, certification of availability of equipment from the equipment lessor/vendor for the duration of the project, as the case may be, must meet the minimum requirements for the contract set in the **BDS**.

11. Documents Comprising the Bid: Financial Component

- 11.1. The second bid envelope shall contain the financial documents for the Bid as specified in **Section IX. Checklist of Technical and Financial Documents**.
- 11.2. Any bid exceeding the ABC indicated in paragraph 1 of the **IB** shall not be accepted.
- 11.3. For Foreign-funded procurement, a ceiling may be applied to bid prices provided the conditions are met under Section 31.2 of the 2016 revised IRR of RA No. 9184.

12. Alternative Bids

Bidders shall submit offers that comply with the requirements of the Bidding Documents, including the basic technical design as indicated in the drawings and specifications. Unless there is a value engineering clause in the **BDS**, alternative Bids shall not be accepted.

13. Bid Prices

All bid prices for the given scope of work in the Project as awarded shall be considered as fixed prices, and therefore not subject to price escalation during contract implementation, except under extraordinary circumstances as determined by the NEDA and approved by the GPPB pursuant to the revised Guidelines for Contract Price Escalation guidelines.

14. Bid and Payment Currencies

14.1. Bid prices may be quoted in the local currency or tradeable currency accepted by the BSP at the discretion of the Bidder. However, for purposes of bid evaluation, Bids denominated in foreign currencies shall be converted to Philippine currency based on the exchange rate as published in the BSP reference rate bulletin on the day of the bid opening.

14.2. *Payment of the contract price shall be made in:*

a. Philippine Pesos.

15. Bid Security

15.1. The Bidder shall submit a Bid Securing Declaration or any form of Bid Security in the amount indicated in the **BDS**, which shall be not less than the percentage of the ABC in accordance with the schedule in the **BDS**.

15.2. The Bid and bid security shall be valid **until 120 calendar days from opening of bid or March 20, 2025**. Any bid not accompanied by an acceptable bid security shall be rejected by the Procuring Entity as non-responsive.

16. Sealing and Marking of Bids

Each Bidder shall submit one copy of the first and second components of its Bid.

The Procuring Entity **requests two (2) additional hard copies** of the Bid. However, failure of the Bidders to comply with the said request shall not be a ground for disqualification.

17. Deadline for Submission of Bids

The Bidders shall submit on the specified date and time and either at its physical address as indicated in paragraph 7 of the **IB**.

18. Opening and Preliminary Examination of Bids

18.1. The BAC shall open the Bids in public at the time, on the date, and at the place specified in paragraph 9 of the **IB**. The Bidders' representatives who are present shall sign a register evidencing their attendance. In case videoconferencing,

webcasting or other similar technologies will be used, attendance of participants shall likewise be recorded by the BAC Secretariat.

In case the Bids cannot be opened as scheduled due to justifiable reasons, the rescheduling requirements under Section 29 of the 2016 revised IRR of RA No. 9184 shall prevail.

- 18.2. The preliminary examination of Bids shall be governed by Section 30 of the 2016 revised IRR of RA No. 9184.

19. Detailed Evaluation and Comparison of Bids

- 19.1. The Procuring Entity's BAC shall immediately conduct a detailed evaluation of all Bids rated "*passed*" using non-discretionary pass/fail criteria. The BAC shall consider the conditions in the evaluation of Bids under Section 32.2 of 2016 revised IRR of RA No. 9184.
- 19.2. If the Project allows partial bids, all Bids and combinations of Bids as indicated in the **BDS** shall be received by the same deadline and opened and evaluated simultaneously so as to determine the Bid or combination of Bids offering the lowest calculated cost to the Procuring Entity. Bid Security as required by **ITB** Clause 15 shall be submitted for each contract (lot) separately.
- 19.3. In all cases, the NFCC computation pursuant to Section 23.4.2.6 of the 2016 revised IRR of RA No. 9184 must be sufficient for the total of the ABCs for all the lots participated in by the prospective Bidder.

20. Post Qualification

Within a non-extendible period of five (5) calendar days from receipt by the Bidder of the notice from the BAC that it submitted the Lowest Calculated Bid, the Bidder shall submit its latest income and business tax returns filed and paid through the BIR Electronic Filing and Payment System (eFPS), and other appropriate licenses and permits required by law and stated in the **BDS**.

21. Signing of the Contract

The documents required in Section 37.2 of the 2016 revised IRR of RA No. 9184 shall form part of the Contract. Additional Contract documents are indicated in the **BDS**.

Section III. Bid Data Sheet

Bid Data Sheet

ITB Clause																						
5.2	<p>For this purpose, contracts similar to the Project refer to contracts which have the same major categories of work, which shall be:</p> <p>A contract similar to the project refers to “construction of building.”</p>																					
7.1.a	Subcontracting is not allowed.																					
10.3	No other instructions.																					
10.4	<p>The key personnel must meet the required minimum years of experience set below:</p> <table border="1" style="width: 100%; border-collapse: collapse;"> <thead> <tr> <th style="text-align: center;"><u>Key Personnel</u></th> <th style="text-align: center;"><u>General Experience</u></th> <th style="text-align: center;"><u>Relevant Experience</u></th> </tr> </thead> <tbody> <tr> <td style="text-align: center;">Project Engineer</td> <td style="text-align: center;">At least 5 years of general practice</td> <td style="text-align: center;">At least 2 years of experience with similar project</td> </tr> <tr> <td style="text-align: center;">Foreman</td> <td style="text-align: center;">At least 5 years experience as Construction Foreman</td> <td style="text-align: center;">At least 2 years of experience with similar project</td> </tr> <tr> <td style="text-align: center;">Safety Officer</td> <td style="text-align: center;">At least 2 years of general practice</td> <td style="text-align: center;">At least 2 years of experience with similar project</td> </tr> </tbody> </table> <p>The bidder shall be required to submit the complete qualification and experience data of key personnel</p>	<u>Key Personnel</u>	<u>General Experience</u>	<u>Relevant Experience</u>	Project Engineer	At least 5 years of general practice	At least 2 years of experience with similar project	Foreman	At least 5 years experience as Construction Foreman	At least 2 years of experience with similar project	Safety Officer	At least 2 years of general practice	At least 2 years of experience with similar project									
<u>Key Personnel</u>	<u>General Experience</u>	<u>Relevant Experience</u>																				
Project Engineer	At least 5 years of general practice	At least 2 years of experience with similar project																				
Foreman	At least 5 years experience as Construction Foreman	At least 2 years of experience with similar project																				
Safety Officer	At least 2 years of general practice	At least 2 years of experience with similar project																				
10.5	<p>The minimum major equipment requirements are the following:</p> <table border="1" style="width: 100%; border-collapse: collapse;"> <thead> <tr> <th style="text-align: center;"><u>Equipment</u></th> <th style="text-align: center;"><u>Capacity</u></th> <th style="text-align: center;"><u>Number of Units</u></th> </tr> </thead> <tbody> <tr> <td style="text-align: center;">Generator Set</td> <td style="text-align: center;">Sufficient to independently power the project implementation</td> <td style="text-align: center;">As necessary (but not less than one)</td> </tr> <tr> <td style="text-align: center;">Dump Truck</td> <td style="text-align: center;">Adequate to project needs</td> <td style="text-align: center;">As necessary (but not less than one)</td> </tr> <tr> <td style="text-align: center;">One Bagger Mixer</td> <td style="text-align: center;">Adequate to project needs</td> <td style="text-align: center;">As necessary (but not less than one)</td> </tr> <tr> <td style="text-align: center;">Bar Cutter</td> <td style="text-align: center;">Adequate to project needs</td> <td style="text-align: center;">As necessary (but not less than one)</td> </tr> <tr> <td style="text-align: center;">Bar Bender</td> <td style="text-align: center;">Adequate to project needs</td> <td style="text-align: center;">As necessary (but not less than one)</td> </tr> <tr> <td style="text-align: center;">Grinding Machine</td> <td style="text-align: center;">Adequate to project needs</td> <td style="text-align: center;">As necessary (but not less than one)</td> </tr> </tbody> </table> <p>The technical component should contain the List of Contractor’s Equipment pledged to the project.</p>	<u>Equipment</u>	<u>Capacity</u>	<u>Number of Units</u>	Generator Set	Sufficient to independently power the project implementation	As necessary (but not less than one)	Dump Truck	Adequate to project needs	As necessary (but not less than one)	One Bagger Mixer	Adequate to project needs	As necessary (but not less than one)	Bar Cutter	Adequate to project needs	As necessary (but not less than one)	Bar Bender	Adequate to project needs	As necessary (but not less than one)	Grinding Machine	Adequate to project needs	As necessary (but not less than one)
<u>Equipment</u>	<u>Capacity</u>	<u>Number of Units</u>																				
Generator Set	Sufficient to independently power the project implementation	As necessary (but not less than one)																				
Dump Truck	Adequate to project needs	As necessary (but not less than one)																				
One Bagger Mixer	Adequate to project needs	As necessary (but not less than one)																				
Bar Cutter	Adequate to project needs	As necessary (but not less than one)																				
Bar Bender	Adequate to project needs	As necessary (but not less than one)																				
Grinding Machine	Adequate to project needs	As necessary (but not less than one)																				
12	Alternative Bids shall not be accepted.																					
15.1	The bid security shall be in the form of a Bid Securing Declaration or any of the following forms and amounts:																					

	<p>a. The amount of not less than P100,000.00, if bid security is in cash, cashier's/manager's check, bank draft/guarantee or irrevocable letter of credit;</p> <p>b. The amount of not less than P250,000.00 if bid security is in Surety Bond.</p>
16	<p>Strict Instruction for the Sealing and Marking of Bids:</p> <p>Each Bidder shall submit three (3) copies of the Technical and Financial components of its bid: one (1) original document and two (2) certified true copies of the original documents thereof.</p> <p>The Bidders shall enclose the Technical Components (eligibility and technical documents) and Financial Component in one sealed envelope with the following markings on each of the three envelopes:</p> <p style="text-align: center;"><u>TECHNICAL/FINANCIAL COMPONENT</u></p> <p style="text-align: center;">Bid for the Expansion of the Modernization of DBM Region 5 Facilities Phase 2 (CY 2025 Early Procurement)</p> <p style="text-align: center;">[COMPANY/BIDDER'S NAME] [COMPANY/BIDDER'S ADDRESS] [E-MAIL ADDRESS]</p> <p style="text-align: center;">DO NOT OPEN BEFORE (*insert date & time of opening of bids*)</p> <p style="text-align: center;">MS. FEBRUARY E. MANUEL Department of Budget and Management Regional Office No. 5 Chairperson DBM ROV Bids and Awards Committee (DBM ROV – BAC) Regional Government Center, Rawis, Legazpi City</p> <p>Please check one:</p> <p style="padding-left: 40px;"><input type="checkbox"/> Original – Technical/Financial Component <input type="checkbox"/> Copy No. 1 – Technical/Financial Component <input type="checkbox"/> Copy No. 2 – Technical/Financial Component</p> <p>a. <i>Note: The three (3) abovementioned envelopes shall be enclosed and sealed in one (1) single envelope.</i></p>
19.2	<p>Partial bid is not allowed. The infrastructure project is packaged in a single lot and the lot shall not be divided into sub-lots for the purpose of bidding, evaluation, and contract award.</p>
20	<p>1. Latest income and business tax returns filed and paid through the BIR Electronic Filing and Payment System (eFPS);</p> <p style="padding-left: 40px;">a. 2023 Income Tax Return with proof of payment;</p> <p style="padding-left: 40px;">b. VAT Returns (Form 2550Q) with proof of payment for the 1st and 2nd quarter of FY 2024 or Percentage Tax (2551Q) with proof of payment covering the months for the 1st and 2nd quarter of FY 2024, whichever is applicable.</p>

	<p>2. Photocopy of Single Largest Completed Contract or Purchase Order; and</p> <p>3. The corresponding proof of completion, which could either be:</p> <ul style="list-style-type: none"> a. Certificate of Final Acceptance/Completion from the bidder's client; <p>or</p> <ul style="list-style-type: none"> b. Official Receipt or Sales Invoice of the bidder covering the full amount of the contract; and <p>* Failure of the Bidder declared as LCB to duly submit the aforesaid requirements on time, or a finding against the veracity thereof shall cause to disqualify the Bidder for award and shall be a ground for forfeiture of the bid security in accordance with Sections 34.2 and 69 of the 2016 IRR of R.A. No 9184.</p> <p>** In case the notice for the submission of post-qualification documents is sent via the bidder's email, it shall be considered as received by the bidder on the date and time the email was sent, whether or not the bidder acknowledged the said email. It shall be the bidder's responsibility to check its/his/her email for the purpose.</p>
21	<p>Additional contract documents relevant to the Project that may be required by existing laws and/or the Procuring Entity, such as:</p> <ul style="list-style-type: none"> 1. Construction schedule; 2. PERT/CPM; 3. S-curve; 4. Manpower schedule; 5. Construction methods; 6. Equipment utilization schedule; and 7. Construction safety and health program approved by the DOLE.

Section IV. General Conditions of Contract

1. **Scope of Contract**

This Contract shall include all such items, although not specifically mentioned, that can be reasonably inferred as being required for its completion as if such items were expressly mentioned herein. All the provisions of RA No. 9184 and its 2016 revised IRR, including the Generic Procurement Manual, and associated issuances, constitute the primary source for the terms and conditions of the Contract, and thus, applicable in contract implementation. Herein clauses shall serve as the secondary source for the terms and conditions of the Contract.

This is without prejudice to Sections 74.1 and 74.2 of the 2016 revised IRR of RA No. 9184 allowing the GPPB to amend the IRR, which shall be applied to all procurement activities, the advertisement, posting, or invitation of which were issued after the effectivity of the said amendment.

2. **Sectional Completion of Works**

If sectional completion is specified in the **Special Conditions of Contract (SCC)**, references in the Conditions of Contract to the Works, the Completion Date, and the Intended Completion Date shall apply to any Section of the Works (other than references to the Completion Date and Intended Completion Date for the whole of the Works).

3. **Possession of Site**

3.1 The Procuring Entity shall give possession of all or parts of the Site to the Contractor based on the schedule of delivery indicated in the **SCC**, which corresponds to the execution of the Works. If the Contractor suffers delay or incurs cost from failure on the part of the Procuring Entity to give possession in accordance with the terms of this clause, the Procuring Entity's Representative shall give the Contractor a Contract Time Extension and certify such sum as fair to cover the cost incurred, which sum shall be paid by Procuring Entity.

3.2 If possession of a portion is not given by the above date, the Procuring Entity will be deemed to have delayed the start of the relevant activities. The resulting adjustments in contract time to address such delay may be addressed through contract extension provided under Annex "E" of the 2016 revised IRR of RA No. 9184.

4. **The Contractor's Obligations**

The Contractor shall employ the key personnel named in the Schedule of Key Personnel indicating their designation, in accordance with **ITB** Clause 10.3 and specified in the **BDS**, to carry out the supervision of the Works.

The Procuring Entity will approve any proposed replacement of key personnel only if their relevant qualifications and abilities are equal to or better than those of the personnel listed in the Schedule.

5. Performance Security

- 5.1. Within ten (10) calendar days from receipt of the Notice of Award from the Procuring Entity but in no case later than the signing of the contract by both parties, the successful Bidder shall furnish the performance security in any of the forms prescribed in Section 39 of the 2016 revised IRR.
- 5.2. The Contractor, by entering into the Contract with the Procuring Entity, acknowledges the right of the Procuring Entity to institute action pursuant to RA No. 3688 against any subcontractor be they an individual, firm, partnership, corporation, or association supplying the Contractor with labor, materials and/or equipment for the performance of this Contract.

6. Site Investigation Reports

The Contractor, in preparing the Bid, shall rely on any Site Investigation Reports referred to in the SCC supplemented by any information obtained by the Contractor.

7. Warranty

- 7.1. In case the Contractor fails to undertake the repair works under Section 62.2.2 of the 2016 revised IRR, the Procuring Entity shall forfeit its performance security, subject its property(ies) to attachment or garnishment proceedings, and perpetually disqualify it from participating in any public bidding. All payables of the GOP in his favor shall be offset to recover the costs.
- 7.2. The warranty against Structural Defects/Failures, except that occasioned-on force majeure, shall cover the period from the date of issuance of the Certificate of Final Acceptance by the Procuring Entity. Specific duration of the warranty is found in the SCC.

8. Liability of the Contractor

Subject to additional provisions, if any, set forth in the SCC, the Contractor's liability under this Contract shall be as provided by the laws of the Republic of the Philippines.

If the Contractor is a joint venture, all partners to the joint venture shall be jointly and severally liable to the Procuring Entity.

9. Termination for Other Causes

Contract termination shall be initiated in case it is determined *prima facie* by the Procuring Entity that the Contractor has engaged, before, or during the implementation of the contract, in unlawful deeds and behaviors relative to contract acquisition and implementation, such as, but not limited to corrupt, fraudulent, collusive, coercive, and obstructive practices as stated in **ITB** Clause 4.

10. Dayworks

Subject to the guidelines on Variation Order in Annex “E” of the 2016 revised IRR of RA No. 9184, and if applicable as indicated in the SCC, the Dayworks rates in the Contractor’s Bid shall be used for small additional amounts of work only when the Procuring Entity’s Representative has given written instructions in advance for additional work to be paid for in that way.

11. Program of Work

11.1. The Contractor shall submit to the Procuring Entity’s Representative for approval the said Program of Work showing the general methods, arrangements, order, and timing for all the activities in the Works. The submissions of the Program of Work are indicated in the SCC.

11.2. The Contractor shall submit to the Procuring Entity’s Representative for approval an updated Program of Work at intervals no longer than the period stated in the SCC. If the Contractor does not submit an updated Program of Work within this period, the Procuring Entity’s Representative may withhold the amount stated in the SCC from the next payment certificate and continue to withhold this amount until the next payment after the date on which the overdue Program of Work has been submitted.

12. Instructions, Inspections and Audits

The Contractor shall permit the GOP or the Procuring Entity to inspect the Contractor’s accounts and records relating to the performance of the Contractor and to have them audited by auditors of the GOP or the Procuring Entity, as may be required.

13. Advance Payment

The Procuring Entity shall, upon a written request of the Contractor which shall be submitted as a Contract document, make an advance payment to the Contractor in an amount not exceeding fifteen percent (15%) of the total contract price, to be made in lump sum, or at the most two installments according to a schedule specified in the SCC, subject to the requirements in Annex “E” of the 2016 revised IRR of RA No. 9184.

14. Progress Payments

The Contractor may submit a request for payment for Work accomplished. Such requests for payment shall be verified and certified by the Procuring Entity’s Representative/Project Engineer. Except as otherwise stipulated in the SCC, materials and equipment delivered on the site but not completely put in place shall not be included for payment.

15. Operating and Maintenance Manuals

- 15.1. If required, the Contractor will provide “as built” Drawings and/or operating and maintenance manuals as specified in the SCC.
- 15.2. If the Contractor does not provide the Drawings and/or manuals by the dates stated above, or they do not receive the Procuring Entity’s Representative’s approval, the Procuring Entity’s Representative may withhold the amount stated in the SCC from payments due to the Contractor.

Section V. Special Conditions of Contract

Special Conditions of Contract

GCC Clause	
6	The site investigation reports are: Certificate of Site Inspection (attested by any BAC Sec present)
7.2	The warranty shall cover one (1) year from the date of issuance of the Certificate of Final Acceptance by the Procuring Entity.
10	No dayworks are applicable to the contract.
11.1	The Contractor shall submit the Program of Work to the Procuring Entity's Representative within seven (7) calendar days of delivery of the Notice of Award.
11.2	The amount to be withheld for late submission of an updated Program of Work is 1/10 of one percent (1%) of the ABC for every day of delay reckoning from the last day of submission of the updated Program of Work.
13	The amount of the advance payment is <i>15% of the total contract price.</i>
14	<p>Materials and equipment delivered on the site but not completely put in place shall NOT be included for payment.</p> <p>Payments to the CONTRACTOR will be made only for the actual accomplishment and/or material utilized, certified by the DBM as performed by the CONTRACTOR in accordance with the plans, specification and program or works/construction schedule and based on progress percentage, specifically as follows:</p> <p>1st payment – 50% Final Payment – 100%</p>
15.1	“As built” drawings/plans shall be submitted before final payment.
15.2	The Procuring Entity may withhold the payment of the remaining balance of the Contractor if it failed to submit or produce “as built” drawings.

Section VI. Specifications

Section VII. Drawings
(See attached files or annexes)

Section VIII. Bill of Quantities
(See attached files or annexes)

Section IX. Checklist of Technical and Financial Documents

Checklist of Technical and Financial Documents

I. TECHNICAL COMPONENT ENVELOPE

Class "A" Documents

Legal Documents

- (a) Valid PhilGEPS Registration Certificate (Platinum Membership) (all pages) in accordance with Section 8.5.2 of the IRR;

Technical Documents

- (b) Statement of the prospective bidder of all its ongoing government and private contracts, including contracts awarded but not yet started, if any, whether similar or not similar in nature and complexity to the contract to be bid; **and**
- (c) Statement of the bidder's Single Largest Completed Contract (SLCC) similar to the contract to be bid, except under conditions provided under the rules; **and**
- (d) Special PCAB License in case of Joint Ventures **and** registration for the type and cost of the contract to be bid; **and**
- (e) Original copy of Bid Security. If in the form of a Surety Bond, submit also a certification issued by the Insurance Commission **or** original copy of Notarized Bid Securing Declaration; **and**
- (f) Project Requirements, which shall include the following:
- a. Organizational chart for the contract to be bid;
 - b. List of contractor's key personnel (e.g., Project Manager, Project Engineers, Materials Engineers, and Foremen), to be assigned to the contract to be bid, with their complete qualification and experience data;
 - c. List of contractor's major equipment units, which are owned, leased, and/or under purchase agreements, supported by proof of ownership or certification of availability of equipment from the equipment lessor/vendor for the duration of the project, as the case may be; **and**
- (g) Original duly signed Omnibus Sworn Statement (OSS) **and** if applicable, Original Notarized Secretary's Certificate in case of a corporation, partnership, or cooperative; or Original Special Power of Attorney of all members of the joint venture giving full power and authority to its officer to sign the OSS and do acts to represent the Bidder.

Financial Documents

- (h) The prospective bidder's computation of Net Financial Contracting Capacity (NFCC).

Class “B” Documents

- (i) If applicable, duly signed joint venture agreement (JVA) in accordance with RA No. 4566 and its IRR in case the joint venture is already in existence.

II. FINANCIAL COMPONENT ENVELOPE

- (j) Original of duly signed and accomplished Financial Bid Form; **and**

Other documentary requirements under RA No. 9184

- (k) Original of duly signed Bid Prices in the Bill of Quantities; **and**
- (l) Duly accomplished Detailed Estimates Form, including a summary sheet indicating the unit prices of construction materials, labor rates, and equipment rentals used in coming up with the Bid; **and**
- (m) Cash Flow by Quarter.

Bid Form for the Procurement of Infrastructure Projects
[shall be submitted with the Bid]

BID FORM

Date : _____

Project Identification No. : _____

To: *[name and address of Procuring Entity]*

Having examined the Philippine Bidding Documents (PBDs) including the Supplemental or Bid Bulletin Numbers *[insert numbers]*, the receipt of which is hereby duly acknowledged, we, the undersigned, declare that:

- a. We have no reservation to the PBDs, including the Supplemental or Bid Bulletins, for the Procurement Project: *[insert name of contract]*;
- b. We offer to execute the Works for this Contract in accordance with the PBDs;
- c. The total price of our Bid in words and figures, excluding any discounts offered below is: *[insert information]*;
- d. The discounts offered and the methodology for their application are: *[insert information]*;
- e. The total bid price includes the cost of all taxes, such as, but not limited to: *[specify the applicable taxes, e.g. (i) value added tax (VAT), (ii) income tax, (iii) local taxes, and (iv) other fiscal levies and duties]*, which are itemized herein and reflected in the detailed estimates,
- f. Our Bid shall be valid within the period stated in the PBDs, and it shall remain binding upon us at any time before the expiration of that period;
- g. If our Bid is accepted, we commit to obtain a Performance Security in the amount of *[insert percentage amount]* percent of the Contract Price for the due performance of the Contract, or a Performance Securing Declaration in lieu of the allowable forms of Performance Security, subject to the terms and conditions of issued GPPB guidelines¹ for this purpose;
- h. We are not participating, as Bidders, in more than one Bid in this bidding process, other than alternative offers in accordance with the Bidding Documents;
- i. We understand that this Bid, together with your written acceptance thereof included in your notification of award, shall constitute a binding contract between us, until a formal Contract is prepared and executed; and

¹ currently based on GPPB Resolution No. 09-2020

- j. We understand that you are not bound to accept the Lowest Calculated Bid or any other Bid that you may receive.
- k. We likewise certify/confirm that the undersigned, is the duly authorized representative of the bidder, and granted full power and authority to do, execute and perform any and all acts necessary to participate, submit the bid, and to sign and execute the ensuing contract for the [Name of Project] of the [Name of the Procuring Entity].
- l. We acknowledge that failure to sign each and every page of this Bid Form, including the Bill of Quantities, shall be a ground for the rejection of our bid.

Name: _____

Legal Capacity: _____

Signature: _____

Duly authorized to sign the Bid for and behalf of: _____

Date: _____

Omnibus Sworn Statement (Revised)

[shall be submitted with the Bid]

REPUBLIC OF THE PHILIPPINES)
CITY/MUNICIPALITY OF _____) S.S.

AFFIDAVIT

I, [Name of Affiant], of legal age, [Civil Status], [Nationality], and residing at [Address of Affiant], after having been duly sworn in accordance with law, do hereby depose and state that:

1. *[Select one, delete the other:]*

[If a sole proprietorship:] I am the sole proprietor or authorized representative of [Name of Bidder] with office address at [address of Bidder];

[If a partnership, corporation, cooperative, or joint venture:] I am the duly authorized and designated representative of [Name of Bidder] with office address at [address of Bidder];

2. *[Select one, delete the other:]*

[If a sole proprietorship:] As the owner and sole proprietor, or authorized representative of [Name of Bidder], I have full power and authority to do, execute and perform any and all acts necessary to participate, submit the bid, and to sign and execute the ensuing contract for [Name of the Project] of the [Name of the Procuring Entity], as shown in the attached duly notarized Special Power of Attorney;

[If a partnership, corporation, cooperative, or joint venture:] I am granted full power and authority to do, execute and perform any and all acts necessary to participate, submit the bid, and to sign and execute the ensuing contract for [Name of the Project] of the [Name of the Procuring Entity], as shown in the attached [state title of attached document showing proof of authorization (e.g., duly notarized Secretary's Certificate, Board/Partnership Resolution, or Special Power of Attorney, whichever is applicable)];

3. [Name of Bidder] is not "blacklisted" or barred from bidding by the Government of the Philippines or any of its agencies, offices, corporations, or Local Government Units, foreign government/foreign or international financing institution whose blacklisting rules have been recognized by the Government Procurement Policy Board, **by itself or by relation, membership, association, affiliation, or controlling interest with another blacklisted person or entity as defined and provided for in the Uniform Guidelines on Blacklisting;**

4. Each of the documents submitted in satisfaction of the bidding requirements is an authentic copy of the original, complete, and all statements and information provided therein are true and correct;

5. [Name of Bidder] is authorizing the Head of the Procuring Entity or its duly authorized representative(s) to verify all the documents submitted;

6. *[Select one, delete the rest:]*

[If a sole proprietorship:] The owner or sole proprietor is not related to the Head of the Procuring Entity, Procurement Agent if engaged, members of the Bids and Awards Committee (BAC), the Technical Working Group, and the BAC Secretariat, the head of the Project Management Office or the end-user unit, and the project consultants by consanguinity or affinity up to the third civil degree;

[If a partnership or cooperative:] None of the officers and members of *[Name of Bidder]* is related to the Head of the Procuring Entity, Procurement Agent if engaged, members of the Bids and Awards Committee (BAC), the Technical Working Group, and the BAC Secretariat, the head of the Project Management Office or the end-user unit, and the project consultants by consanguinity or affinity up to the third civil degree;

[If a corporation or joint venture:] None of the officers, directors, and controlling stockholders of *[Name of Bidder]* is related to the Head of the Procuring Entity, Procurement Agent if engaged, members of the Bids and Awards Committee (BAC), the Technical Working Group, and the BAC Secretariat, the head of the Project Management Office or the end-user unit, and the project consultants by consanguinity or affinity up to the third civil degree;

7. *[Name of Bidder]* complies with existing labor laws and standards; and

8. *[Name of Bidder]* is aware of and has undertaken the responsibilities as a Bidder in compliance with the Philippine Bidding Documents, which includes:

- a. Carefully examining all of the Bidding Documents;
- b. Acknowledging all conditions, local or otherwise, affecting the implementation of the Contract;
- c. Making an estimate of the facilities available and needed for the contract to be bid, if any; and
- d. Inquiring or securing Supplemental/Bid Bulletin(s) issued for the *[Name of the Project]*.

9. *[Name of Bidder]* did not give or pay directly or indirectly, any commission, amount, fee, or any form of consideration, pecuniary or otherwise, to any person or official, personnel or representative of the government in relation to any procurement project or activity.

10. In case advance payment was made or given, failure to perform or deliver any of the obligations and undertakings in the contract shall be sufficient grounds to constitute criminal liability for Swindling (Estafa) or the commission of fraud with unfaithfulness or abuse of confidence through misappropriating or converting any payment received by a person or entity under an obligation involving the duty to deliver certain goods or services, to the prejudice of the public and the government of the Philippines pursuant to Article 315 of Act No. 3815 s. 1930, as amended, or the Revised Penal Code.

IN WITNESS WHEREOF, I have hereunto set my hand this ___ day of ___, 20__ at _____, Philippines.

[Insert NAME OF BIDDER OR ITS AUTHORIZED REPRESENTATIVE]

[Insert signatory's legal capacity]

Affiant

[Jurat]

[Format shall be based on the latest Rules on Notarial Practice]

Bid Securing Declaration Form

[shall be submitted with the Bid if bidder opts to provide this form of bid security]

REPUBLIC OF THE PHILIPPINES)
CITY OF _____) S.S.

BID SECURING DECLARATION **Project Identification No.: *[Insert number]***

To: *[Insert name and address of the Procuring Entity]*

I/We, the undersigned, declare that:

1. I/We understand that, according to your conditions, bids must be supported by a Bid Security, which may be in the form of a Bid Securing Declaration.
2. I/We accept that: (a) I/we will be automatically disqualified from bidding for any procurement contract with any procuring entity for a period of two (2) years upon receipt of your Blacklisting Order; and, (b) I/we will pay the applicable fine provided under Section 6 of the Guidelines on the Use of Bid Securing Declaration, within fifteen (15) days from receipt of the written demand by the procuring entity for the commission of acts resulting to the enforcement of the bid securing declaration under Sections 23.1(b), 34.2, 40.1 and 69.1, except 69.1(f), of the IRR of RA No. 9184; without prejudice to other legal action the government may undertake.
3. I/We understand that this Bid Securing Declaration shall cease to be valid on the following circumstances:
 - a. Upon expiration of the bid validity period, or any extension thereof pursuant to your request;
 - b. I am/we are declared ineligible or post-disqualified upon receipt of your notice to such effect, and (i) I/we failed to timely file a request for reconsideration or (ii) I/we filed a waiver to avail of said right; and
 - c. I am/we are declared the bidder with the Lowest Calculated Responsive Bid, and I/we have furnished the performance security and signed the Contract.

IN WITNESS WHEREOF, I/We have hereunto set my/our hand/s this ____ day of *[month]* *[year]* at *[place of execution]*.

*[Insert NAME OF BIDDER OR ITS AUTHORIZED
REPRESENTATIVE]*

[Insert signatory's legal capacity]
Affiant

[Jurat]

[Format shall be based on the latest Rules on Notarial Practice]

Contract Agreement Form for the Procurement of Infrastructure Projects (Revised)

*[not required to be submitted with the Bid, but it shall be submitted within ten (10) days after receiving the
Notice of Award]*

CONTRACT AGREEMENT

THIS AGREEMENT, made this *[insert date]* day of *[insert month]*, *[insert year]* between *[name and address of PROCURING ENTITY]* (hereinafter called the “Entity”) and *[name and address of Contractor]* (hereinafter called the “Contractor”).

WHEREAS, the Entity is desirous that the Contractor execute *[name and identification number of contract]* (hereinafter called “the Works”) and the Entity has accepted the Bid for *[contract price in words and figures in specified currency]* by the Contractor for the execution and completion of such Works and the remedying of any defects therein.

NOW THIS AGREEMENT WITNESSETH AS FOLLOWS:

1. In this Agreement, words and expressions shall have the same meanings as are respectively assigned to them in the Conditions of Contract hereinafter referred to.
2. The following documents as required by the 2016 revised Implementing Rules and Regulations of Republic Act No. 9184 shall be deemed to form and be read and construed as part of this Agreement, *viz.*:
 - a. Philippine Bidding Documents (PBDs);
 - i. Drawings/Plans;
 - ii. Specifications;
 - iii. Bill of Quantities;
 - iv. General and Special Conditions of Contract;
 - v. Supplemental or Bid Bulletins, if any;
 - b. Winning bidder’s bid, including the Eligibility requirements, Technical and Financial Proposals, and all other documents or statements submitted;

Bid form, including all the documents/statements contained in the Bidder’s bidding envelopes, as annexes, and all other documents submitted (*e.g.*, Bidder’s response to request for clarifications on the bid), including corrections to the bid, if any, resulting from the Procuring Entity’s bid evaluation;

- c. Performance Security;
- d. Notice of Award of Contract and the Bidder’s conforme thereto; and
- e. Other contract documents that may be required by existing laws and/or the Procuring Entity concerned in the PBDs. **Winning bidder agrees that additional contract documents or information prescribed by the GPPB that are subsequently required for submission after the contract**

execution, such as the Notice to Proceed, Variation Orders, and Warranty Security, shall likewise form part of the Contract.

3. In consideration for the sum of *[total contract price in words and figures]* or such other sums as may be ascertained, *[Named of the bidder]* agrees to *[state the object of the contract]* in accordance with his/her/its Bid.
4. The *[Name of the procuring entity]* agrees to pay the above-mentioned sum in accordance with the terms of the Bidding.

IN WITNESS whereof the parties thereto have caused this Agreement to be executed the day and year first before written.

[Insert Name and Signature]

[Insert Name and Signature]

[Insert Signatory's Legal Capacity]

[Insert Signatory's Legal Capacity]

for:

for:

[Insert Procuring Entity]

[Insert Name of Supplier]

Acknowledgment

[Format shall be based on the latest Rules on Notarial Practice]



ANNEX C

EXPANSION OF THE MODERNIZATION OF DBM REGION 5 FACILITIES PHASE 2 DBM Regional Office V, Regional Government Center, Rawis, Legazpi City Albay

BILL OF QUANTITIES

ITEM NO.	DESCRIPTION	QUANTITY	UNIT	UNIT COST	TOTAL
PART I FACILITIES FOR THE ENGINEER					
A.1.4 Photographs					
A.1.4(1)	Provision of Progress Photographs	1.00	l.s.		
TOTAL OF PART I					
PART II OTHER GENERAL REQUIREMENTS					
B.3	Permits and Clearances	1.00	l.s.		
B.5	Project Billboard / Sign Board	1.00	ea		
B.7(2)	Occupational Safety and Health	1.00	l.s.		
B.9	Mobilization/Demobilization	1.00	l.s.		
TOTAL OF PART II					
PART III CIVIL, MECHANICAL, ELECTRICAL AND SANITARY/PLUMBING WORKS					
PART A EARTHWORKS					
801(1)	Removal of Structures and Obstruction	1.00	l.s.		
803(1)a	Structure Excavation (Common Soil)	73.91	cu.m.		
804(4)	Gravel Fill	279.00	cu.m.		
807(1)	Site Development	1.00	L.s.		
TOTAL OF PART A					
PART B PLAIN AND REINFORCED CONCRETE WORKS					
900(1)c2	Structural Concrete for Footing and Slab on Fill (Class A, 28days)	43.08	cu.m.		
900(1)c3	Structural Concrete for Grade Beams (Class A, 28days)	30.83	cu.m.		
900(1)c4	Structural Concrete for Column (Class A, 28days)	5.30	cu.m.		
900(1)c5	Structural Concrete for Overhang Slab (Class A, 28days)	22.08	cu.m.		
900(1)c6	Structural Concrete for Beams/Girders (Class A, 28days)	30.22	cu.m.		
902(1)a	Reinforcing Steel, Grade 40	2,689.16	kgs		
902(1)b	Reinforcing Steel, Grade 60	1,319.15	kgs		
903(2)	Formworks and Falseworks	1.00	L.s.		
TOTAL OF PART B					
LACTATING, SERVER ROOM AND SECOND FLOOR COMFORT ROOM (MAIN BUILDING)					
PART C FINISHINGS AND OTHER CIVIL WORKS					
C.3 Fabricated Materials					
	WPC Fluted Panel	6.58	sq.m		
	0.80mWx2.10mH : Wood Swing Door w/ 2"x6" Door Jamb	19.00	set		
	Finishing Hardware	1.00	lot		
	Kitchen Countertop (0.90 x 1.8 Granite Tiles)	1.00	lot		
	Kitchen Cabinets	1.00	lot		
	Dry Wall Partitions	7.12	sq.m		
	Wallpaper	7.12	sq.m		
	Wall-Mounted Diaper Changing Table Fold Down Vertical	1.00	unit		
Sub - Total C.3					
C.4 Finishing Works					
	Ceiling, 4.5mm Fiber Cement Board on Metal Frame	41.66	m2		
	Glazed Tiles and Trims	12.70	sq.m		
	Unglazed Tiles	30.00	sq.m		
Sub - Total C.4					
C.5 Painting Works					
	Painting Works (Wall Paint)	150.28	sq.m.		
	Painting Works (Ceiling Paint)	30.00	sq.m.		
Sub - Total C.5					
C.6 Plumbing/ Sanitary Works					
	Plumbing & Sanitary Roughing Ins	1.00	l.s.		
	Kitchen Sink Set (Double Sink) w/ Faucet & Accessories	1.00	set		
	Water Closet, Elongated, Complete (with Toilet Tissue and Soap holder)	6.00	set		
	Urinal Automatic Flush Valve, Complete (Lever arm Type)	6.00	set		
	Lavatory	5.00	set		
	Bidet (Stainless Steel)	6.00	set		
	Stainless Steel Grab Bar, 40mm Dia.	20.00	Ln.m		

ANNEX C

EXPANSION OF THE MODERNIZATION OF DBM REGION 5 FACILITIES PHASE 2 DBM Regional Office V, Regional Government Center, Rawis, Legazpi City Albay

BILL OF QUANTITIES

ITEM NO.	DESCRIPTION	QUANTITY	UNIT	UNIT COST	TOTAL
	Facial Mirror	3.00	set		
	Faucet	5.00	pc		
	Sub - Total C.6				
	TOTAL OF PART C				
PART D	ELECTRICAL WORKS				
	Conduit, Boxes & Fittings (Conduit Works/Conduit Rough-in)	1.00	L.s.		
	Wires and Wiring Devices	1.00	L.s.		
	Lighting Fixtures and Lamps	1.00	L.s.		
	Miscellaneous (Support, Brackets, Junction Box, Utility Box, etc.)	1.00	L.s.		
	TOTAL OF PART D				
	TOTAL OF PART III				
	GRAND TOTAL				

Amount in Words:

*Prices quoted shall be inclusive of 12% VAT and contractor's profit

Submitted by:

Date:

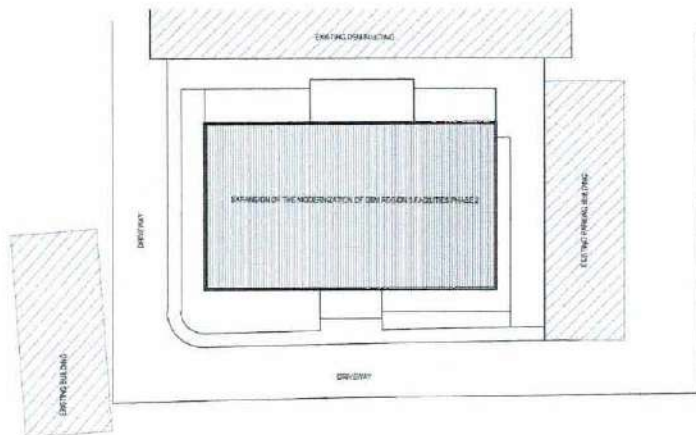
Name and Signature of Bidder's Representative

Position

Name of Bidder



P E R S P E C T I V E



SITE DEVELOPMENT PLAN
SCALE: 1:200



VICINITY MAP
SCALE: 1:500

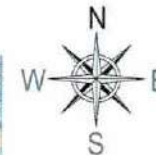
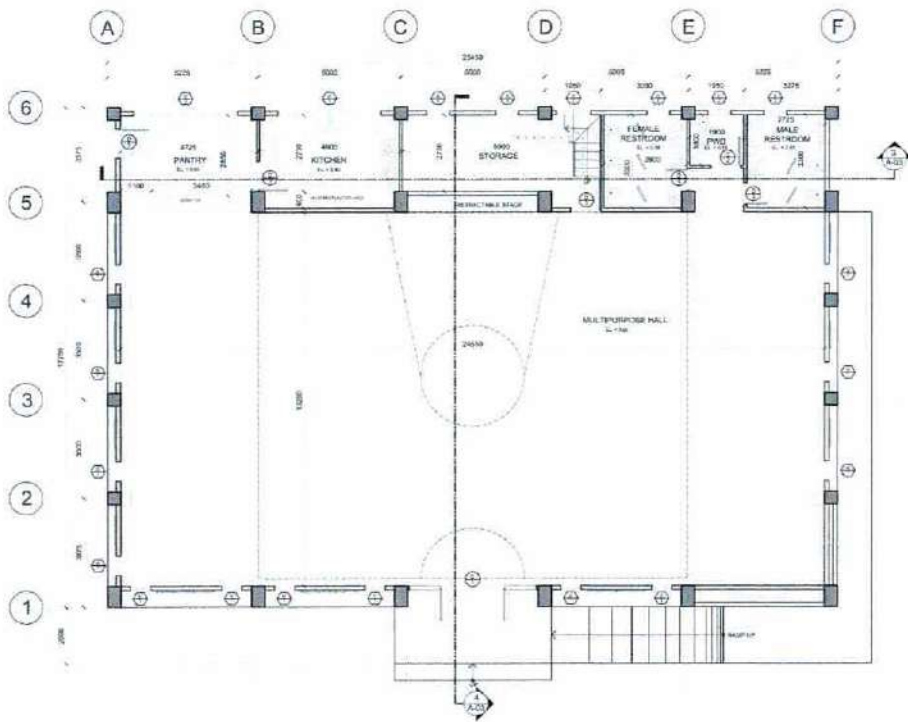
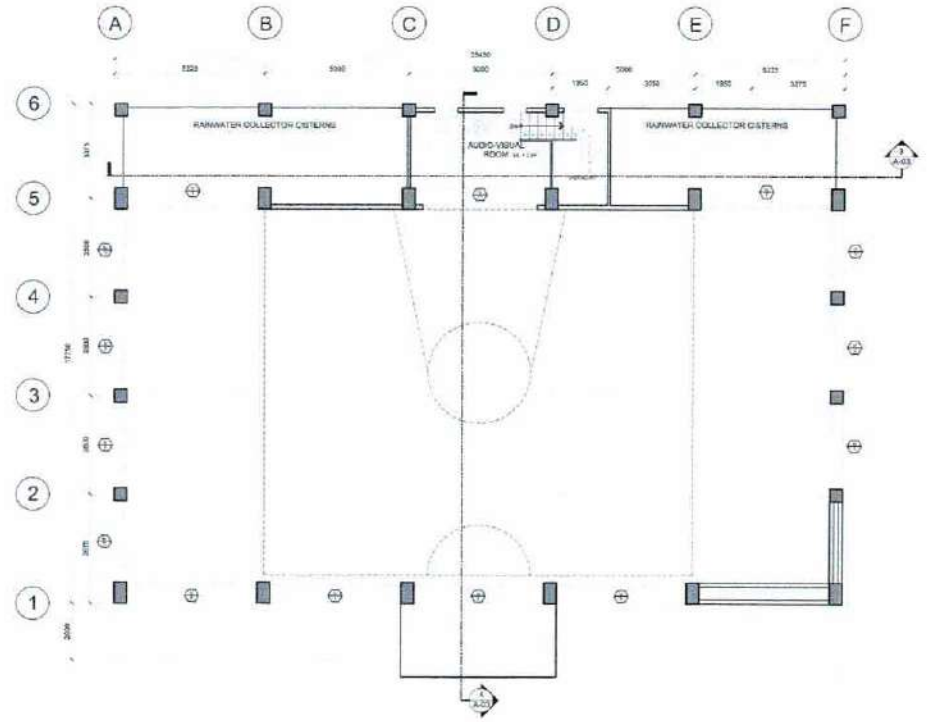


TABLE OF CONTENTS		REPUBLIC OF THE PHILIPPINES DEPARTMENT OF PUBLIC WORKS & HIGHWAYS OFFICE OF THE BUILDING OFFICIALS	
CS-1	TABLE OF CONTENTS	DISTRICT / CITY / MUNICIPAL	
	EXTERIOR PERSPECTIVE		
	SITE DEVELOPMENT PLAN		
	VICINITY MAP		
A-01	GROUND FLOOR PLAN		
	UPPER LEVEL PLAN		
	FRONT ELEVATION		
	RIGHT-SIDE ELEVATION		
A-02	GROUND FLOOR REFLECTED CEILING PLAN		
	MEZZANINE REFLECTED CEILING PLAN		
	REAR ELEVATION	LINE & GRADE	
	LEFT-SIDE ELEVATION		
A-03	UPPER-LEVEL REFLECTED CEILING PLAN		
	ROOF PLAN		
	LONGITUDINAL SECTION		
	CROSS SECTION		
A-04	SCHEDULE OF DOORS & WINDOWS		
	STAIR DETAILS		
S-01	DESIGN CRITERIA		LAND USE & ZONING
	GENERAL NOTES A-F		
S-02	GENERAL NOTES G-I		
S-03	GENERAL NOTES J-K		
S-04	FOOTING REINFORCEMENT SCHEDULE		
	TYPICAL DETAIL FOR ISOLATED FOOTING		
	TYPICAL DETAIL FOR COMBINED FOOTING		
S-05	SCHEDULE OF GRADE BEAMS		
	GRADE BEAM PLAN		
	SLAB ON FILL SCHEDULE	ARCHITECTURAL	
	TYPICAL INTERIOR BRICK		
	TYPICAL EXTERIOR BRICK		
	TYPICAL CASTLEVER		
	TYPICAL CASTLEVER		
	TYPICAL SINGLE SPAN		
S-06	SCHEDULE OF WALL FOOTING		
	COLUMN LAYOUT		
	COLUMN SCHEDULE		
	DETAIL OF COLUMN C1		
	DETAIL OF COLUMN C2		
	DETAIL OF COLUMN C3	STRUCTURAL	
S-07	BEAM SCHEDULE		
	LVL 3.6M BEAM LAYOUT		
	LVL 4.8M BEAM LAYOUT		
S-08	BEAM SCHEDULE		
	LVL 5.0M BEAM LAYOUT		
	LVL 6.6M BEAM LAYOUT		
S-09	ROOF FRAMING PLAN		
	TRUSS DETAIL		
	ROOFING & PURLINS CONNECTION		
	TRUSS CONNECTION DETAIL	SANITARY	
E-01	GROUND FLOOR LIGHTING LAYOUT		
	MEZZANINE LEVEL LIGHTING LAYOUT		
	UPPER LEVEL LIGHTING LAYOUT		
	GENERAL NOTES AND ELECTRICAL SYMBOLS		
E-02	GROUND FLOOR POWER LAYOUT		
	MEZZANINE LEVEL POWER LAYOUT		
	SCHEDULE OF LIGHTS & ELECTRICAL SYMBOLS		
	SINGLE LINE DIAGRAM		
	WIRING SCHEDULE		
P-01	RAINWATER COLLECTOR LAYOUT	ELECTRICAL	
	ROOF AREA LAYOUT		
P-02	MEZZANINE DETECTOR LAYOUT		
	ROOF AREA DETECTOR LAYOUT		
	MEZZANINE DETECTOR LAYOUT		
	ROOF AREA DETECTOR LAYOUT		
	MEZZANINE DETECTOR LAYOUT		
	ROOF AREA DETECTOR LAYOUT		
	MEZZANINE DETECTOR LAYOUT		
	ROOF AREA DETECTOR LAYOUT		
	MEZZANINE DETECTOR LAYOUT	MECHANICAL	
	ROOF AREA DETECTOR LAYOUT		
	MEZZANINE DETECTOR LAYOUT		
	ROOF AREA DETECTOR LAYOUT		
	MEZZANINE DETECTOR LAYOUT		
	ROOF AREA DETECTOR LAYOUT		
	MEZZANINE DETECTOR LAYOUT		
	ROOF AREA DETECTOR LAYOUT		
	MEZZANINE DETECTOR LAYOUT		
	ROOF AREA DETECTOR LAYOUT		

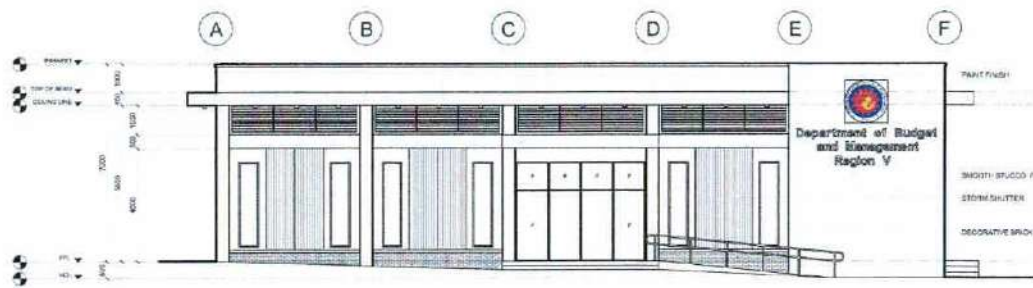
 ARZEFREN O. BELTEN JR. ARCHITECT				PROJECT TITLE/ LOCATION: EXPANSION OF THE MODERNIZATION OF DBM REGION 5 FACILITIES PHASE 2 DBM COMPOUND, REGIONAL GOVERNMENT CENTER, LEGAZPI CITY		APPROVED BY: FRANCIS C. BAUTISTA Acting Director IV Department of Budget and Management - Region V OWNER		RA 9296 Sec. 33 THESE DRAWINGS AND SPECIFICATIONS AND OTHER CONTRACT DOCUMENTS ONLY SHOULD BE STAMPED OR SEALED AS INSTRUMENT OF SERVICE. ARE THE INTELLECTUAL PROPERTY AND DOCUMENT OF THE ARCHITECT. WHETHER THE OBJECT FOR WHICH THEY ARE MADE EXECUTED OR NOT, IT SHALL BE UNLAWFUL FOR ANY PERSON TO DUPLICATE OR TO MAKE COPIES OF SAID DOCUMENTS FOR USE IN THE REPETITION OF AND FOR OTHER PROJECTS OR THE BUILDINGS, WHETHER EXECUTED PARTLY OR IN WHOLE, WITHOUT THE WRITTEN CONSENT OF THE ARCHITECT OR AUTHOR OF SAID DOCUMENTS.		SHEET CONTENT AS SHOWN		SHEET NO. CS 01	
PRC	46914	PTR	2936234										
VALIDITY	OCT.12,2025	DATE	JAN.18,2024										
TIN	733-679-410	PLACE	BACACAY										



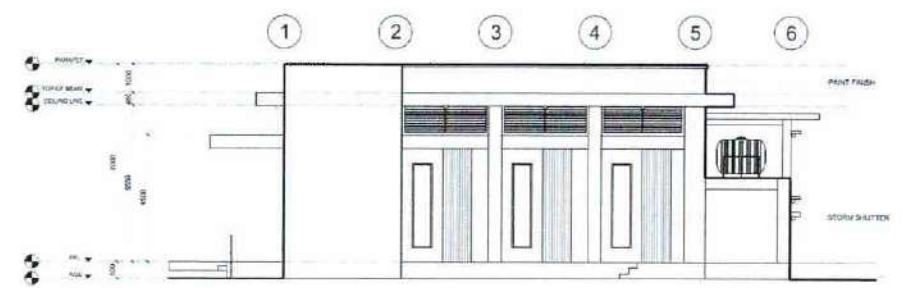
1 GROUND FLOOR PLAN
SCALE: 1:100



2 UPPER LEVEL PLAN
SCALE: 1:100



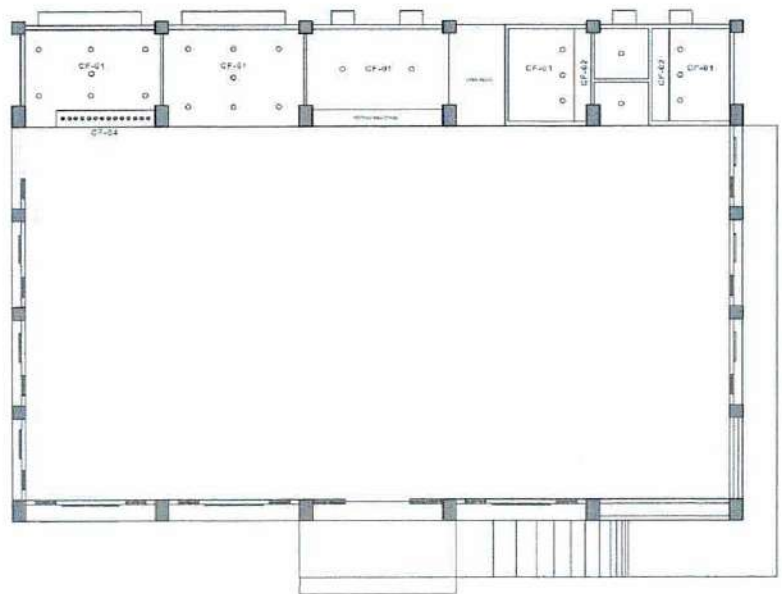
3 FRONT ELEVATION
SCALE: 1:100



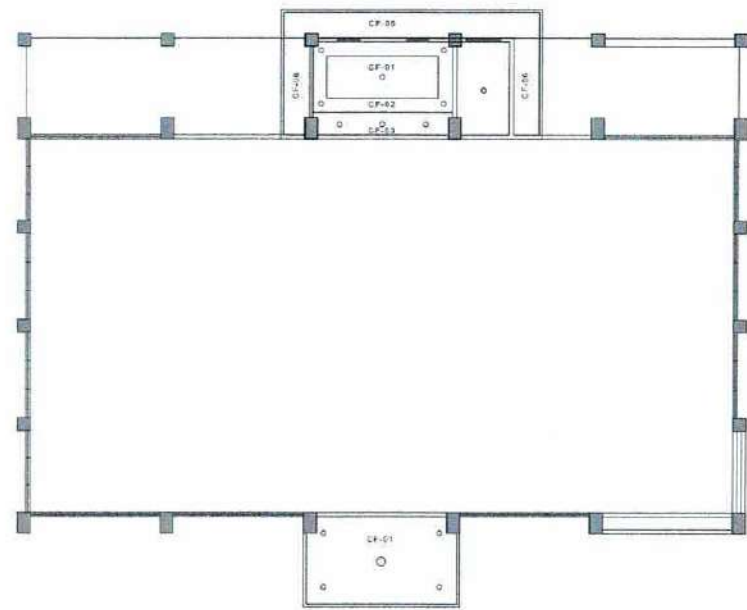
4 RIGHT-SIDE ELEVATION
SCALE: 1:100

 ARLEFFREN O. BELÉN JR. ARCHITECT		PROJECT TITLE/ LOCATION: EXPANSION OF THE MODERNIZATION OF DBM REGION 5 FACILITIES PHASE 2 DBM COMPOUND, REGIONAL GOVERNMENT CENTER, LEGAZPI CITY	APPROVED BY: FRANCIS C. BAUTISTA Acting Director IV Department of Budget and Management - Region V OWNER	RA 9266 Sec. 33 <small>THESE DRAWINGS AND SPECIFICATIONS AND OTHER CONTRACT DOCUMENTS DULY SIGNED, STAMPED OR SEALED AS INSTRUMENT OF SERVICES ARE THE INTELLECTUAL PROPERTY AND DOCUMENT OF THE ARCHITECT. WHETHER THE OBJECT FOR WHICH THEY ARE MADE EXECUTED OR NOT, IT SHALL BE UNLAWFUL FOR ANY PERSON TO DUPLICATE OR TO MAKE COPIES OF SAID DOCUMENTS FOR USE IN THE REPEITION OF AND FOR OTHER PROJECTS OR THE BUILDINGS, WHETHER EXECUTED PARTLY OR IN WHOLE, WITHOUT THE WRITTEN CONSENT OF THE ARCHITECT OR AUTHOR OF SAID DOCUMENTS.</small>	SHEET CONTENT AS SHOWN	SHEET NO. A 01
PRC: 46914 VALIDITY: OCT.12,2025 TN: 733-679-410	PTR: 2936234 DATE: JAN.18,2024 PLACE: BACACAY					

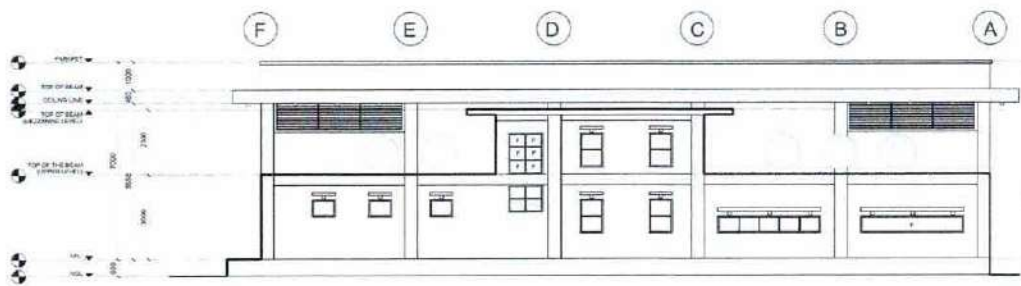
CEILING FINISHES SCHEDULE	
MARK	DESCRIPTION
CF-01	CYPRIN BOARD (CEILING PAINTED SMOOTH)
CF-02	CONCRETE CEILING
CF-03	AWC
CF-04	SUSPENDED CEILING
CF-05	SUSPENDED ACOUSTIC PANELS
CF-06	GALVANIZED SPANDREL
○	CEILING LIGHT
□	WALL LIGHT
●	DROP LIGHT



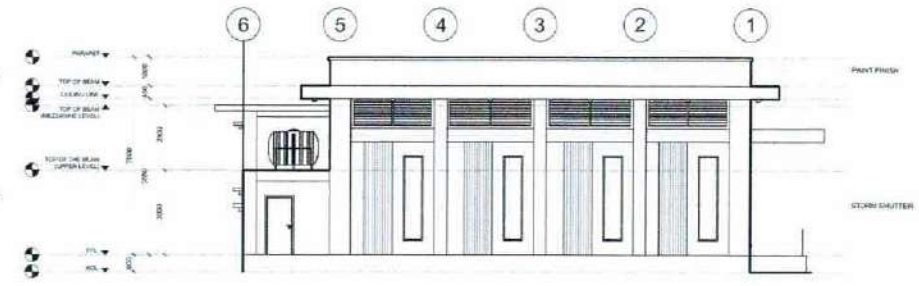
GROUND FLOOR REFLECTED CEILING PLAN
SCALE: 1/8" = 1'-0"



MEZZANINE LEVEL REFLECTED CEILING PLAN
SCALE: 1/8" = 1'-0"

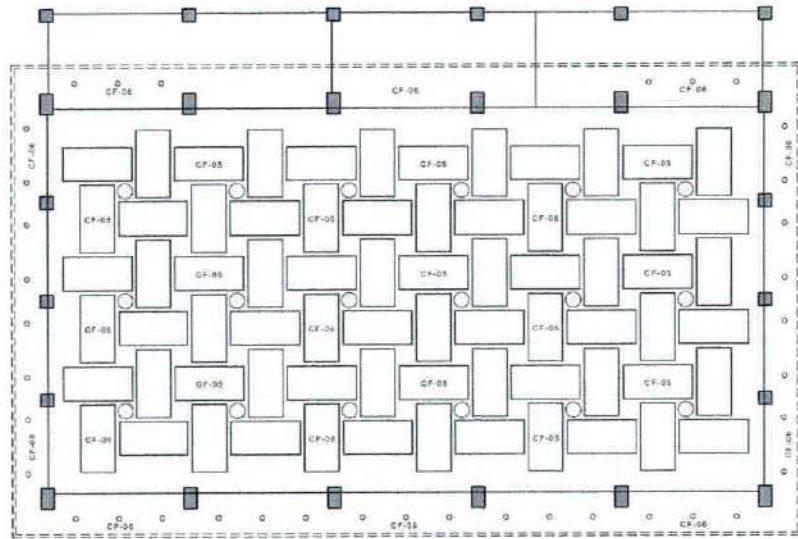


REAR ELEVATION
SCALE: 1/8" = 1'-0"



LEFT-SIDE ELEVATION
SCALE: 1/8" = 1'-0"

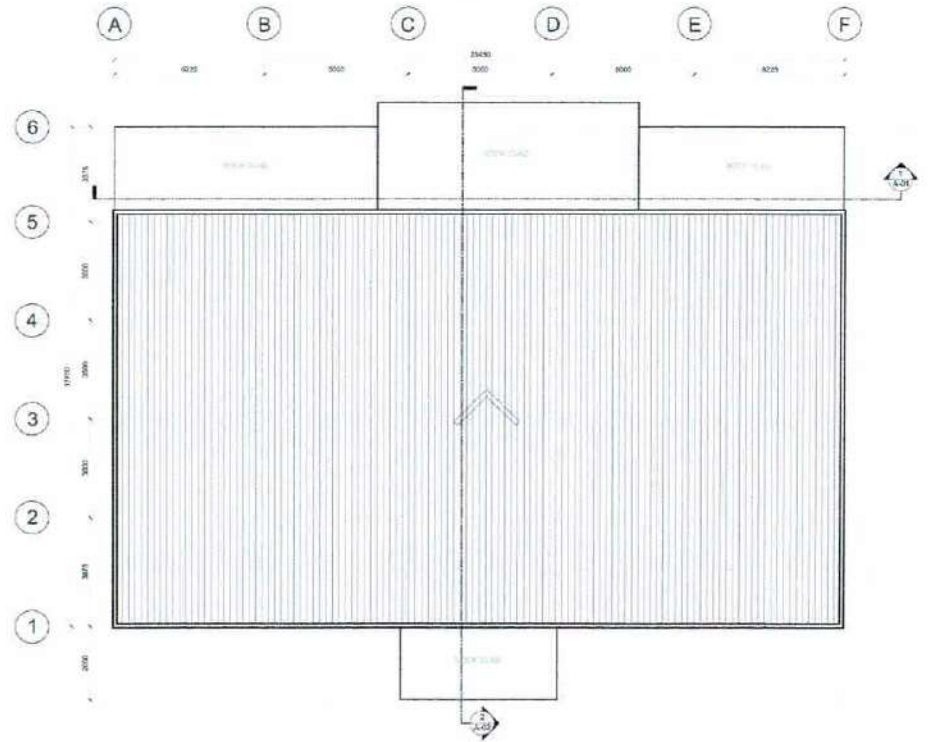
AR. EFREN O. BELLEN JR. ARCHITECT		PROJECT TITLE/ LOCATION: EXPANSION OF THE MODERNIZATION OF DBM REGION 5 FACILITIES PHASE 2	APPROVED BY: FRANCIS C. BAUTISTA Acting Director IV Department of Budget and Management - Region V OWNER	RA 9266 Sec. 33 <small>THESE DRAWINGS AND SPECIFICATIONS AND OTHER CONTRACT DOCUMENTS DULY SIGNED, STAMPED OR SEALED AS INSTRUMENT OF SERVICES ARE THE INTELLECTUAL PROPERTY AND DOCUMENT OF THE ARCHITECT WHETHER THE OBJECT FOR WHICH THEY ARE MADE EXECUTED OR NOT. IT SHALL BE UNLAWFUL FOR ANY PERSON TO DUPLICATE OR TO MAKE COPIES OF SAID DOCUMENTS FOR USE IN THE REPETITION OF AND FOR OTHER PROJECTS ON THE BUILDINGS, WHETHER EXECUTED PARTLY OR IN WHOLE, WITHOUT THE WRITTEN CONSENT OF THE ARCHITECT OR AUTHOR OF SAID DOCUMENTS.</small>	SHEET CONTENT AS SHOWN	SHEET NO. A 02
FRC 46914 VALIDITY OCT.12,2025 JIN 733-679-419	PTR 2936234 DATE JAN.16,2024 PLACE BACACAY	DBM COMPOUND, REGIONAL GOVERNMENT CENTER, LEGAZPI CITY				



CEILING FINISHES SCHEDULE

MARK	DESCRIPTION
CF-01	COPYRUB BOARD CEILING (PAINTED MEDIUM)
CF-02	COVERED CEILING
CF-03	WPC
CF-04	SUSPENDED CEILING
CF-05	SUSPENDED ACOUSTIC PANELS
CF-06	GALVANIZED BRANDRIE
○	CEILING LIGHT
◊	WALL LIGHT
•	DROP LIGHT

UPPER LEVEL
REFLECTED CEILING PLAN
1:100 SCALE

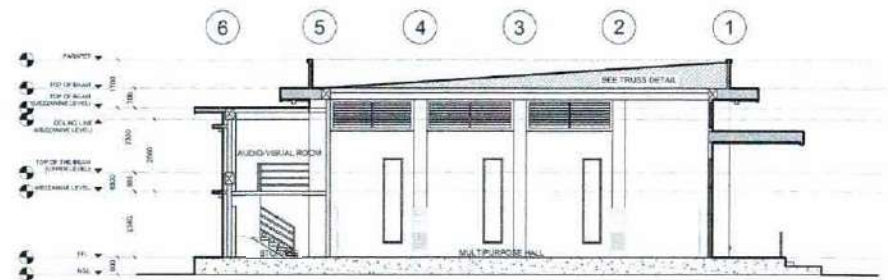


ROOF PLAN
1:100 SCALE

A B C D E F

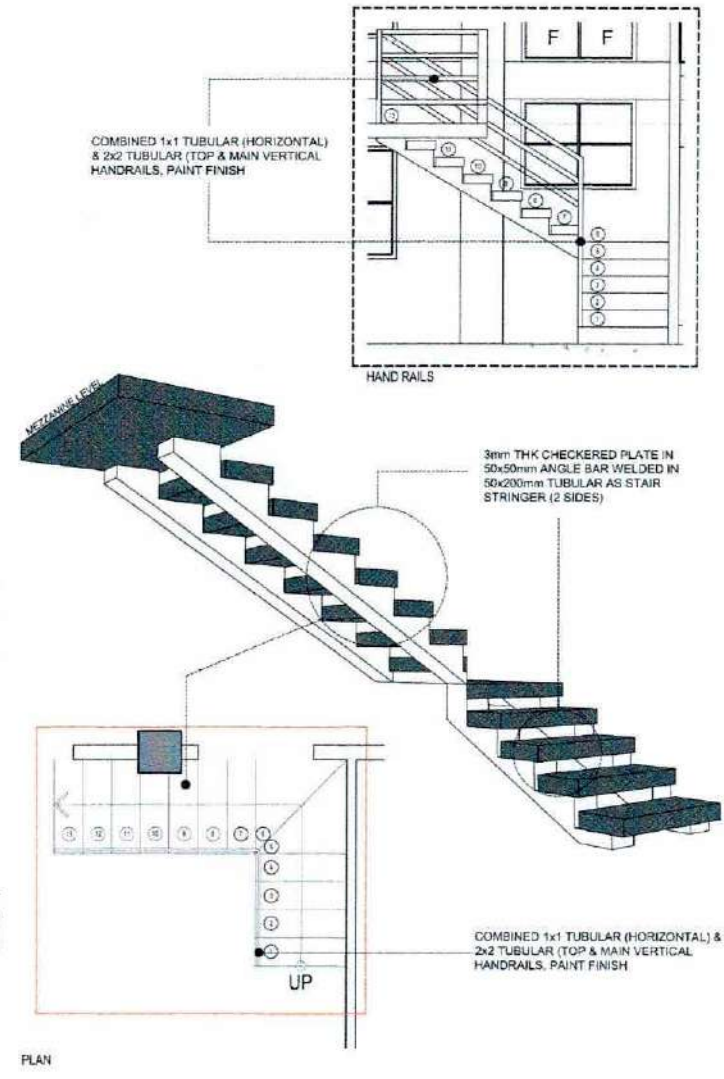
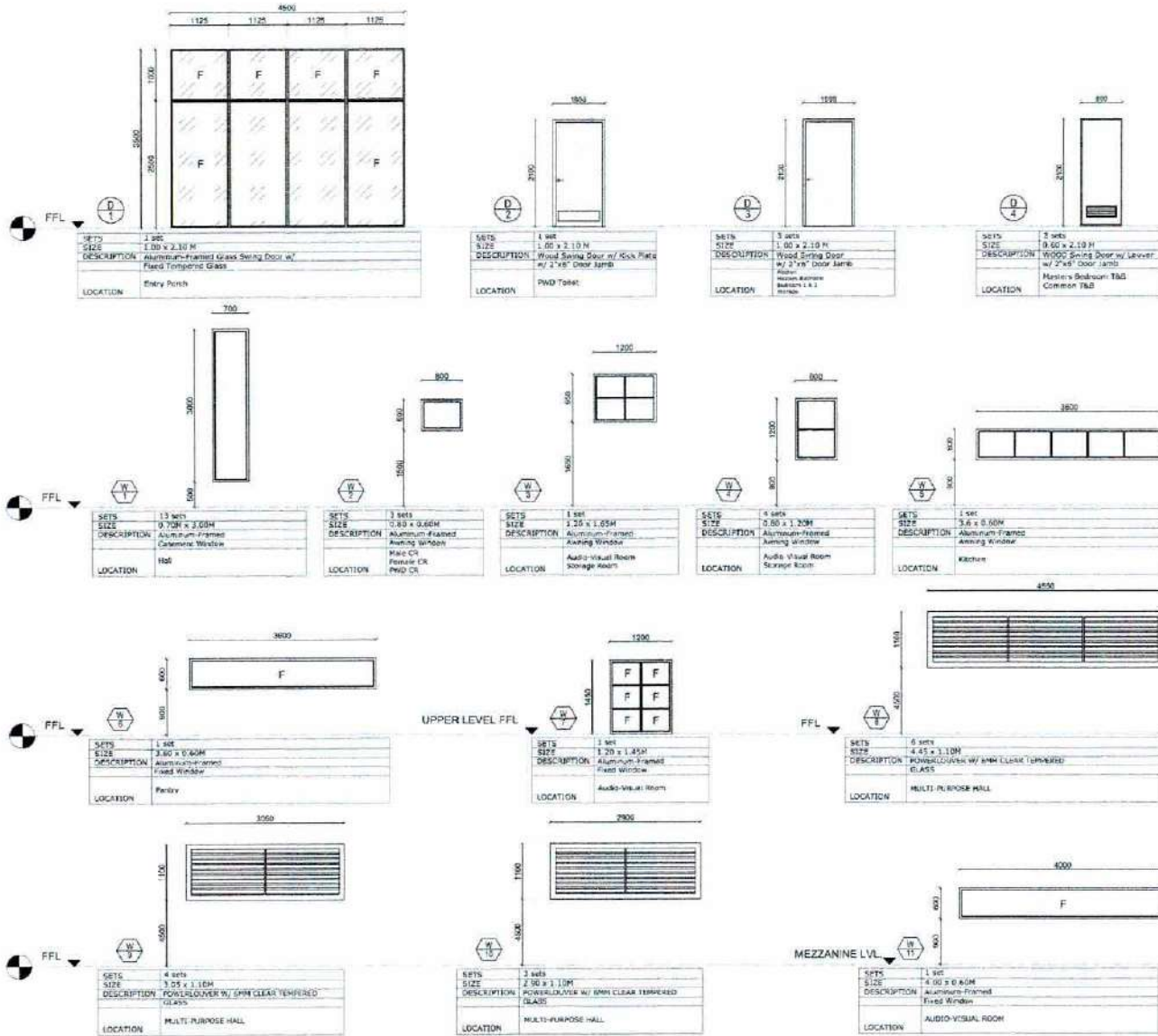


LONGITUDINAL SECTION
1:100 SCALE



CROSS SECTION
1:100 SCALE

<p>ARCEFFEN O. BELLEN JR. ARCHITECT</p>		<p>PROJECT TITLE/ LOCATION: EXPANSION OF THE MODERNIZATION OF DBM REGION 5 FACILITIES PHASE 2</p>	<p>APPROVED BY: FRANCIS C. BAUTISTA Acting Director IV Department of Budget and Management - Region V OWNER</p>	<p>RA 9266 Sec. 33 THESE DRAWINGS AND SPECIFICATIONS AND OTHER CONTRACT DOCUMENTS DULY SIGNED, STAMPED OR SEALED AS INSTRUMENT OF SERVICES ARE THE INTELLECTUAL PROPERTY AND DOCUMENT OF THE ARCHITECT WHETHER THE OBJECT FOR WHICH THEY ARE MADE EXECUTED OR NOT. IT SHALL BE UNLAWFUL FOR ANY PERSON TO DUPLICATE OR TO MAKE COPIES OF SAID DOCUMENTS FOR USE IN THE REPETITION OF AND FOR OTHER PROJECTS OR THE BUILDING WHETHER EXECUTED WHOLLY OR IN WHOLE, WITHOUT THE WRITTEN CONSENT OF THE ARCHITECT OR AUTHOR OF SAID DOCUMENTS.</p>	<p>SHEET CONTENT AS SHOWN</p>	<p>SHEET NO. A 03</p>
<p>PRC 46914 PTR 2936234 VALIDITY OCT. 12, 2025 DATE JAN. 18, 2024 TN 733-678-410 PLACE BACAYAN</p>	<p>DRM COMPOUND, REGIONAL GOVERNMENT CENTER, LEGAZPI CITY</p>					



SCHEDULE OF DOORS AND WINDOWS

STAIR DETAIL

AR. EFREN O. BELLEN JR. ARCHITECT		PROJECT TITLE/ LOCATION: EXPANSION OF THE MODERNIZATION OF DBM REGION 5 FACILITIES PHASE 2 DBM COMPOUND, REGIONAL GOVERNMENT CENTER, LEGAZPI CITY	APPROVED BY: FRANCIS C. BAUTISTA Acting Director IV Department of Budget and Management - Region V OWNER	RA 9266 Sec. 33 <small>THESE DRAWINGS AND SPECIFICATIONS AND OTHER CONTRACT DOCUMENTS DULY SIGNED, STAMPED OR SEALED AS INSTRUMENT OF SERVICE, ARE THE INTELLECTUAL PROPERTY AND DOCUMENT OF THE ARCHITECT. WHETHER THE OBJECT FOR WHICH THEY ARE MADE EXECUTED OR NOT, IT SHALL BE UNLAWFUL FOR ANY PERSON TO DUPLICATE OR TO MAKE COPIES OF SAID DOCUMENTS FOR USE IN THE RETENTION OF AND FOR OTHER PROJECTS OR OF THE BUILDINGS, WHETHER EXECUTED PARTLY OR IN WHOLE, WITHOUT THE WRITTEN CONSENT OF THE ARCHITECT OR AUTHOR OF SAID DOCUMENTS.</small>	SHEET CONTENT AS SHOWN	SHEET NO. A 04
PRC: 46914 VALIDITY: OCT. 12, 2025 TIN: 733-679-410	PTR: 2936234 DATE: JAN. 18, 2024 PLACE: BACAKAY					

DESIGN CRITERIA

A. REFERENCE CODE
NATIONAL STRUCTURE CODE OF THE PHILIPPINES, VOLUME 1, 2015 EDITION

B. LOADS

B.1. ROOFING

a. G/ ROOFING = 0.1400 kPa
 b. PURLINS (120x50x2.0mm) Upped Channel = 4.081 kPa
 c. UTILITIES, CEILING = 0.25 kPa

B.2. DEAD LOADS

a. WALLS
 EXTERIOR WALL (8" CH) = 3.30 kPa
 FLOOR FINISHES
 CERAMIC (25mm) TILES ON 15mm MORTAR BED = 0.77 kPa
 CEMENT FINISH = 0.85 kPa

c. CEILING
 GYPSUM BOARD = 0.1 kPa
 FLUORING SYSTEM = 0.1 kPa

d. MATERIALS
 CONCRETE = 24.0 kN/m³
 STEEL = 25.6 kN/m³
 SOIL = 17.3 kN/m³

B.3. LIVE LOADS
 ROOF LIVE LOAD = 0.8 kPa
 BASIC FLOOR AREA = 1.30 kPa

B.4. SEISMIC LOAD
 ZONE = 4
 DISTANCE FROM SEISMIC SOURCE = 4.30 km
 TYPE OF SEISMIC SOURCE = TYPE B
 IMPORTANCE FACTOR = 1.5 (ESSENTIAL FACILITIES)
 DUCTILITY COEFFICIENT, R = 8.5 (SPRICAL R.C. MOMENT FRAME)
 SOIL PROFILE = S₂

B.5. WIND LOAD
 WIND VELOCITY = 313.00 km/h

B.6. SOIL DATA
 SOIL BEARING CAPACITY = 100 kPa

A. GENERAL NOTES

- IN THE INTERPRETATION OF THESE DRAWINGS, INDICATED DIMENSIONS SHALL GOVERN AND DISTANCES OR SIZES SHALL NOT BE SCALED FOR CONSTRUCTION PURPOSES.
- THE CONTRACTOR SHALL COORDINATE WITH THE A.R., M.E., S.E.E., AND OTHER UTILITIES AND EQUIPMENT PLANS FOR THE EXACT SIZE, NUMBER AND LOCATIONS OF ALL SLEEVES OR OPENINGS THRU FLOOR SLABS, BEAMS AND WALLS AND ALSO BUILDING DIMENSIONS.
- ALL REINFORCED CONCRETE WORK SHALL BE DONE IN ACCORDANCE WITH THE AC-318-05 BUILDING CODE AND ALL STRUCTURAL STEEL WORK SHALL BE DONE IN ACCORDANCE WITH AISC SPECIFICATIONS (LATEST EDITION) IN SO FAR AS THEY DO NOT CONFLICT WITH THE LOCAL BUILDING CODE REQUIREMENTS.
- ALL SLABS, BEAMS, GIRDERS AND OTHER STRUCTURAL ELEMENTS WHICH ARE NOT INDICATED, DETAILED, DESIGNATED OR INADVERTENTLY OMITTED BUT ARE NECESSARY TO BE COORDINATED WITH ARCHITECTURAL AND OTHER ALLIED ENGINEERING PLANS AS WELL AS TO COMPLETE THE STRUCTURAL WORKS IN ACCORDANCE WITH THE INTENT OF THE PLANS AND SPECIFICATIONS SHALL BE BROUGHT UP DURING PRE-BID MEETINGS/NEGOTIATIONS. IT IS UNDERSTOOD THAT THE CONTRACTOR HAS PROVIDED AND INCLUDED ALL THESE ITEMS IN THEIR BID.
- THE BIDDER/CONTRACTOR SHALL COORDINATE THE PLANS WITH ALL SECTIONS & DETAILS & ALL ARCHITECT/ENGINEERING PLANS TO COMPLETE ALL WORKS IN ACCORDANCE WITH THE INTENT/REQUIREMENTS OF THE PROJECT. ANY DISCREPANCY SHALL BE BROUGHT UP DURING THE PRE-BID MEETINGS/NEGOTIATIONS. IT IS UNDERSTOOD THAT THE CONTRACTOR PROVIDED AND INCLUDED ALL THESE ITEMS IN THEIR BID.
- IN CASE OF DISCREPANCY BETWEEN THE PLANS AND SPECIFICATIONS, THE STRICTER SHALL GOVERN.
- THE CONTRACTOR SHALL VERIFY/VALIDATE ALL DIMENSIONS, MEASUREMENTS AND INFORM THE ENGINEER FOR ANY DISCREPANCY PRIOR TO CONSTRUCTION.

B. NOTES ON CONCRETE MIXING AND PLACES

- UNLESS OTHERWISE INDICATED IN PLANS OR NOTED IN THE SPECIFICATIONS THE MINIMUM 28-DAYS CYLINDER COMPRESSIVE STRENGTH OF CONCRETE IS SHALL BE AS FOLLOWS:

1.1	FOOTINGS, RE BEAMS, COLEANS, BEAMS/GIRDERS, ELEVATOR WALLS AND PILE CAP	24.80 MPa (3500 psi) - CLASS A
1.2	SUPPLEMENTS, SLAB, RETAINING WALL AND START WALL	20.80 MPa (3000 psi) - CLASS A
1.3	SLAB ON FILL, TEMPORARY PILING/PIEDRAL	17.80 MPa (2500 psi) - CLASS B
1.4	PIPING, WALL, CURB, GUTTER, SIDEWALK, UTILITY, BEAMA, CHECKERBOARD STRUCTURAL ELEMENTS (TRENCH AND RAMP)	7.00 MPa (1000 psi) - CLASS A
1.5	LEAVE CONCRETE	17.80 MPa (2500 psi) - CLASS B

2. CONCRETE SHALL BE DEPOSITED IN ITS FINAL POSITION WITHOUT SEGREGATION, RE-HANDLING OR FLOWING. PLACING SHALL BE DONE PREFERABLY WITH BUCKETS, BUCKETS OR WHEEL BARROWS. NO CHUTES WILL BE ALLOWED EXCEPT TO TRANSFER CONCRETE FROM HOPPERS TO BUCKETS, WHEEL BARROWS OR BUCKETS, IN WHICH CASE, THEY SHALL NOT EXCEED SIX THOUSAND (6000mm) IN AGGREGATE LENGTH.

3. NO DEPOSITING OF CONCRETE SHALL BE ALLOWED WITHOUT THE USE OF VIBRATORS UNLESS AUTHORIZED IN WRITING BY THE STRUCTURAL ENGINEER AND ONLY FOR UNUSUAL CONDITIONS WHERE VIBRATION IS EXTREMELY DIFFICULT TO ACCOMPLISH.

C. NOTES ON CONCRETE MIXING AND PLACES

1. ALL REINFORCING STEEL BARS SHALL BE NEW BILLET, HOT ROLLED, WELDABLE, DEFORMED BARS CONFORMING TO THE LATEST DPMW STANDARD SPECIFICATION WHOSE GRADE IS SHOWN ON TABLE 1.

GRADE	BAR DIAMETE
GRADE 415 (fy = 50ksi)	16Ø & ABOVE
GRADE 275 (fy = 40ksi)	12Ø & SMALLER

For 12mm BARS USED IN PIEDestal & GRND-SECOND FLR. COLUMNS USE GRADE 415 (fy = 65 ksi)

2. THE SUPPLEMENTARY REQUIREMENTS OF WELDABLE DEFORMED REINFORCING BARS SHALL BE AS FOLLOWS:

- THE MAXIMUM YIELD STRENGTH OF WELDABLE BARS = 540 MPa.
- THE TENSILE STRENGTH SHALL NOT BE LESS THAN 1.25 TIMES THE ACTUAL YIELD STRENGTH.

3. ALL CONCRETE REINFORCEMENT SHALL BE DETAILED, FABRICATED, LABELED, SUPPORTED AND SPACED IN FORMS, SECURED IN THE REQUIRED LOCATION IN ACCORDANCE WITH THE PROCEDURES AND REQUIREMENTS OUTLINED IN THE LATEST EDITION OF THE BUILDING CODE AND THE MANUAL OF STANDARD PRACTICE FOR DETAILING REINFORCED CONCRETE STRUCTURES, AND SIMILAR.

4. ALL REINFORCING BARS SHALL BE CLEANED THOROUGHLY OF ALL LOOSE RUST, SOIL OR OTHER MATERIAL IMMEDIATELY PRIOR TO PLACING CONCRETE.

5. THE REQUIRED LENGTH OF LAP FOR TENSION SPLICES IS BASED ON THE DEVELOPMENT LENGTH (L_d) SHOWN IN TABLE 2 AND TABLE 3 FOR RC BEAMS AND GIRDERS, RESPECTIVELY AND ON THE FOLLOWING CLASSIFICATIONS:

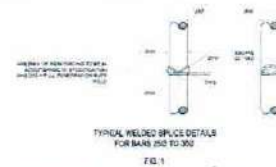
BAR SIZE (mm)	f _c = 27.60 MPa (4000 psi)	
	TOP BARS	OTHER BARS
16	550	425
20	700	530
25	1300	984
28	1600	1200

6. TOP BARS ARE HORIZONTAL BARS WITH AT LEAST 300mm OF CONCRETE CAST BELOW IT.

BAR SIZE (mm)	f _c = 27.60 MPa (4000 psi)	
	TOP BARS	OTHER BARS
16	550	425
20	700	530
25	1300	984
28	1600	1200

7. THE REQUIRED LENGTH OF LAP FOR COMPRESSION SPLICE SHALL BE AS SHOWN IN TABLE 4

8. A FULL WELDED SPLICES SHALL HAVE BARS BUTTED AND WELDED TO DEVELOP IN TENSION AT LEAST 125 PERCENT OF THE SPECIFIED YIELD STRENGTH (Y_f) OF THE BAR (SEE FIGURE 1)

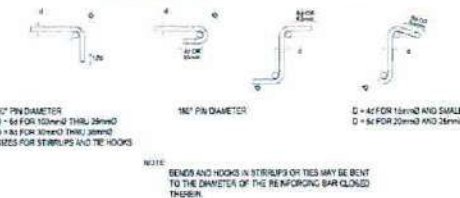


9. ALL WELDING OF REINFORCEMENT SHALL CONFORM TO THE PROVISIONS OF THE STRUCTURAL WELDING CODE REINFORCING STEEL AWS D11.4

10. A FULL MECHANICAL CONNECTION (RESAR SPLICE) SHALL DEVELOP IN TENSION OR COMPRESSION AS REQUIRED, 125 PERCENT OF THE SPECIFIED YIELD STRENGTH (Y_f) OF THE BAR IF USED. SUBMIT SAMPLE FOR APPROVAL OF THE STRUCTURAL ENGINEER.

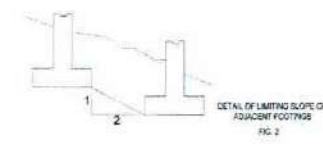
11. CLEAR CONCRETE COVER FOR REINFORCING BARS SHALL BE AS FOLLOWS:

- CONCRETE CAST AGAINST EARTH = 75 mm
- CONCRETE EXPOSED TO EARTH OR WEATHER:
 - 20 mm to 36 mm BARS = 50 mm
 - 18 mm BARS AND SMALLER = 40 mm
- CONCRETE NOT EXPOSED TO EARTH OR WEATHER:
 - SLABS, WALLS, JOINTS, BEAMS AND COLUMNS = 20 mm
 - OTHER = 40 mm



D. NOTES ON FOUNDATION

- FOOTINGS ARE DESIGNED FOR AN ALLOWABLE SOIL BEARING PRESSURE OF 100 KPa (2000 psf) AT A MINIMUM DEPTH OF 1.50 METERS FROM THE NATURAL GRADE LINE. CONTRACTOR SHALL REPORT IN WRITING TO THE STRUCTURAL ENGINEER ON THE ACTUAL SOIL CONDITIONS UNCOVERED AND CONFIRM ACTUAL BEARING CAPACITY OF SOIL BEFORE DEPOSITING CONCRETE.
- NO FOOTING SHALL REST ON FILL. FOOTINGS FOR CH WALLS AND OTHER MINOR STRUCTURES SHALL BE EMBEDDED AT LEAST 750mm FROM THE NATURAL GRADE LEVEL.
- PROVIDE TEMPORARY REMOVAL OF WATER FROM ANY SOURCE DURING CONSTRUCTION. DEWATERING SHALL BE CAREFULLY AND PROPERLY PERFORMED TO AVOID DISTURBING THE FOUNDATIONS AND SLAB BEARING SURFACES.
- CONTRACTOR SHALL DESIGN, INSTALL AND MONITOR EXCAVATIONS RETENTION SYSTEMS, AS REQUIRED FOR PROTECTION OF ADJACENT PROPERTIES AND PROVIDE ALL MEASURES AND PRECAUTIONS NECESSARY TO MINIMIZE SETTLEMENT AND PREVENT DAMAGE TO ADJACENT EXISTING OR NEW LANDMARKS.
- PREPARE CONDITIONS OF CONCRETE SUPPLY AND PLACEMENT OF THE COMPLETE FOUNDATION FOR THE FULL THICKNESS AS A CONTINUOUS MONOLITHIC CASTING.
- SEE TYPICAL DETAIL OF LIMITING SLOPE OF ADJACENT FOOTINGS AT DIFFERENT ELEVATION (REFER TO FIGURE 3)



E. NOTES ON SLAB-ON-GRADE

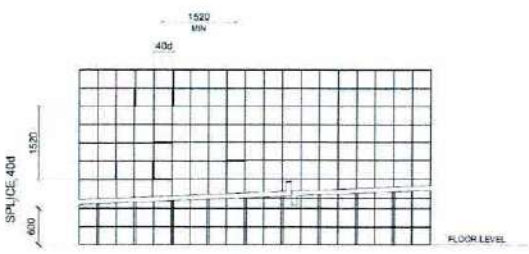
- THE SOIL SUBGRADE AND FILL LAYERS BELOW ALL SLABS ON GRADE, PAVING AND PIT SLABS SHALL BE MECHANICALLY COMPACTED IN LAYERS TO A MINIMUM OF 95 PERCENT OF THE MODIFIED PROCTOR DENSITY PER ASTM D1557.
- ALL SLABS-ON-GRADE SHALL BE PROVIDED WITH A MINIMUM OF 100mm THK. COMPACTED CLEAN COARSE SAND BED.
- UNLESS OTHERWISE NOTED, ALL BEDDED SLABS SHALL BE REINFORCED WITH 10mm BARS AT 200mm O.C. EACHWAY AT THE CENTER OF SLAB.
- PLACE CONCRETE FOR ALL SLABS-ON-GRADE IN CHECKERBOARD FASHION BETWEEN CONSTRUCTION JOINTS IN AREAS NOT TO EXCEED 30.0 METERS WITH A MINIMUM OF 24 HOURS BETWEEN ADJACENT AREAS OF PLACEMENT. CONSTRUCTION JOINTS SHALL NOT BE FARTHER APART THAN 8.00 METERS IN ANY DIRECTION. ALL SLABS ON GRADE SHALL BE SAW CUT ON EACH GRID LINE AND MID BAY LINE IN BOTH DIRECTIONS WITHIN 24 HOURS AFTER CASTING.

F. NOTES ON CONCRETE WALLS

1. ALL WALLS SHALL BE REINFORCED ACCORDING TO THE FOLLOWING SCHEDULE OF WALL REINFORCEMENT UNLESS OTHERWISE INDICATED IN THE PLANS (REFER TO TABLE 5)

WALL THICKNESS (mm)	REINFORCEMENTS		REMARKS	VERTICAL SECTION
	HORIZONTAL	VERTICAL		
100	10mm at 250 O.C.	10mm at 300 O.C.	HORIZONTAL BAR AT CENTER	
125	10mm at 200 O.C.	10mm at 250 O.C.	VERTICAL BARS STAGGERED OUTSIDE	
150	12mm at 200 O.C.	12mm at 250 O.C.	DITTO	
175	20mm at 250 O.C.E.F.	12mm at 200 O.C.E.F.	DITTO	
200	10mm at 200 O.C.E.F.	10mm at 200 O.C.E.F.	BOTH FACES HORIZONTAL STEEL BE OUTSIDE	

- REINFORCING BARS SHALL HAVE 25mm MINIMUM CLEAR DISTANCE FROM WALL FACE EXCEPT FOR WALLS DEPOSITED AGAINST THE GROUND WHERE A MINIMUM OF 63mm SHALL BE PROVIDED AND FOR EXPOSED FACES OF FORMED WALLS WHERE THE MINIMUM SHALL BE 50mm CLEAR FOR BARS LARGER THAN 16mm, AND 35mm FOR 15mm BARS OR SMALLER.
- CARRY VERTICAL BARS AT LEAST 600mm ABOVE FLOOR LEVEL TO PROVIDE FOR SPLICES WHEN NECESSARY. STOP AT 50mm BELOW TOP OF THE SLAB OR SOLID BAND WHERE THE WALLS END. HORIZONTAL AND VERTICAL BARS SHALL BE SPACED BY LAPPING A DISTANCE EQUAL TO 40 DIAMETER AND WELD SECURELY WITH NO. 16 G. WIRE PROVIDED THAT SPLICES IN ADJACENT BARS ARE STAGGERED AT LEAST 150mm ON CENTER (SEE FIGURE 3)



ENGR. ROMAR N. BONTO
CIVIL ENGINEER

PRC	D172424	PTR	29.20893
VALIDITY	JAN. 31, 2028	DATE	JAN. 8, 2024
TIN	442-701-690	PLACE	BACACAY, ALBAY

PROJECT TITLE/ LOCATION:

EXPANSION OF THE MODERNIZATION OF DBM REGION 5 FACILITIES PHASE 2

DBM COMPOUND, REGIONAL GOVERNMENT CENTER, LEGAZPI CITY

APPROVED BY:

FRANCIS C. BAUTISTA
Acting Director IV

Department of Budget and Management - Region V

OWNER

RA 9266 Sec. 33

THESE DRAWINGS AND SPECIFICATIONS AND OTHER CONTRACT DOCUMENTS DULY SIGNED, STAMPED OR SEALED AS INSTRUMENT OF SERVICES, ARE THE INTELLECTUAL PROPERTY AND DOCUMENT OF THE ARCHITECT/ENGINEER. THE OBJECT FOR WHICH THEY ARE MADE EXECUTED OR NOT, IT SHALL BE UNLAWFUL FOR ANY PERSON TO DUPLICATE OR TO MAKE COPIES OF SAID DOCUMENTS FOR USE IN THE REPRODUCTION OF AND FOR OTHER PROJECTS OR THE BUILDINGS, WHETHER EXECUTED PARTLY OR IN WHOLE, WITHOUT THE WRITTEN CONSENT OF THE ARCHITECT OR AUTHOR OF SAID DOCUMENTS.

SHEET CONTENT

AS SHOWN

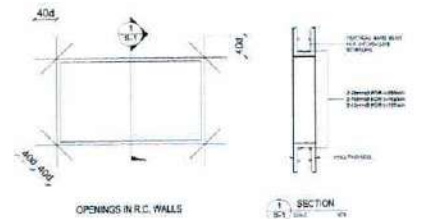
SHEET NO.

S
01

4. UNLESS OTHERWISE NOTED IN THE PLANS ALL OPENINGS IN WALLS 250mm OR THICKER SHALL BE REINFORCED AROUND WITH 2-20mm BARS FOR 225mm, 300mm, 375mm, 450mm THICK WALLS. USE 3-16mm BARS FOR 125mm THICK WALLS. USE 2-12mm BARS (See FIGURE 4)

ALL WALLS OPENING SHALL HAVE VERTICAL REINFORCEMENT BENT TO A U-FORM LIKE STIRRUPS AND SPACED ACCORDING TO THE SCHEDULE UNLESS OTHERWISE NOTED (REFER TO SECTION 1 ON FIGURE 4)

ALL CONCRETE WORKS SHALL BE REINFORCED WITH BARS OF AREA AT LEAST EQUAL TO THAT SPECIFIED IN ACI 318-88 BUILDING CODE.

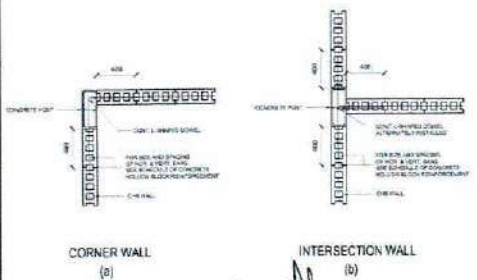


OPENINGS IN R.C. WALLS

5. NOTES ON MASONRY WALLS

1. ALL MATERIALS AND WORKMANSHIP SHALL BE IN ACCORDANCE WITH THE APPLICABLE STANDARDS AND SPECIFICATIONS OF THE NATIONAL CONCRETE MASONRY ASSOCIATION AND UNIFORM BUILDING CODE
2. CONCRETE MASONRY UNITS SHALL CONFORM TO ASTM D90 GRADE N
3. MORTAR AND GROUT FOR ALL REINFORCED MASONRY SHALL CONFORM TO ASTM 210-TYPE M AND SHALL HAVE A MINIMUM 28-DAYS STANDARD CYLINDER COMPRESSIVE OF 21 MPa (300 PSI)
4. ALL MASONRY WALLS SHALL BE REINFORCED ACCORDING TO THE FOLLOWING SCHEDULE OF CONCRETE HOLLOW BLOCK REINFORCEMENT UNLESS OTHERWISE INDICATED IN THE PLANS
5. ALL CELLS CONTAINING REINFORCING BARS OR INSERTS SHALL BE SOLIDLY FILLED WITH CONCRETE GROUT
6. FOR TYPICAL CONNECTION DETAILS ON MASONRY UNITS, REFER TO FIGURES 5, 6 & 7 RESPECTIVELY.

BLOCK THICKNESS (mm)	REINFORCEMENT		NOTE
	HORIZONTAL	VERTICAL	
100	100 @ 600mm C/C	10mm @ 400mm C/C	A. MINIMUM LAP SPLICES = 30 DIA. B. PROVIDE 1-160 VERTICAL BAR @ CORNERS, INTERSECTIONS, END OF WALLS, AND EACH SIDE OF OPENING C. WHERE CHB WALLS ADJACIN COLUMNS RC BEAMS & OR HORIZONTAL REINFORCEMENT SHALL BE PROVIDED D. LINTEL BEAMS SHALL BEAR AT LEAST 10 INCHES (400mm) ON EACH SIDE OF MASONRY WALL OPENING.
150	120 @ 600mm C/C	12MM @ 400mm C/C	



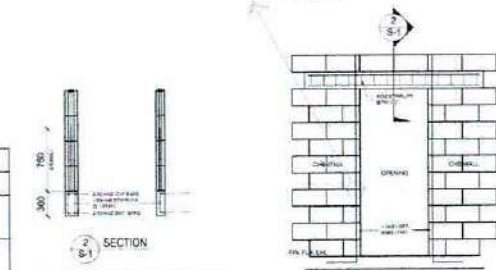
CORNER WALL (a)

INTERSECTION WALL (b)

DET. OF BLOCK & LINTEL BEAM (c)

6. TYPICAL CONNECTION DETAILS OF CONCRETE MASONRY UNITS AT COLUMN AND/OR WALLS

FIG. 5

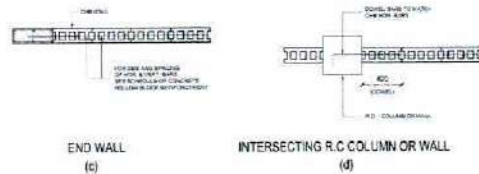


TYPICAL DETAIL OF 100 & 150 LINTEL BEAMS AND TYPICAL DETAILS AT DOOR OPENING

FIG. 7

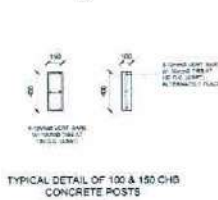
ELEVATION

FIG. 8



END WALL (c)

INTERSECTING R.C. COLUMN OR WALL (d)



TYPICAL DETAIL OF 100 & 150 CHS CONCRETE POSTS

FIG. 6

H. NOTES ON CONCRETE SLABS

1. ALL SLAB REINFORCEMENTS SHALL HAVE A MINIMUM CLEAR DISTANCE OF 20mm FROM THE BOTTOM AND FROM THE TOP OF SLABS
2. UNLESS OTHERWISE DETAILED, FOR CONTINUOUS SLABS WITH THE MAIN REINFORCEMENT RUNNING IN ONE DIRECTION, REINFORCING BARS SHALL BE BENT UP, EXTENDED OR CUT AS FOLLOWS:



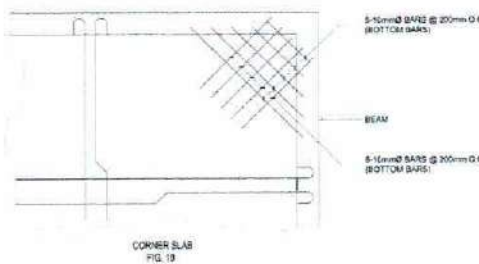
TYPICAL SPLICE & OFFSET DETAIL OF COLUMN BARS

FIG. 11

3. IF SLABS ARE REINFORCED BOTHWAYS, BARS ALONG THE SHORTER SPAN SHALL BE PLACED BELOW THOSE ALONG THE LONG SPAN AT THE CENTER OF THE SLAB AND BE PLACED OVER THE LONGER SPAN BARS ON AREAS NEAR THE SUPPORTS. THE SPACING OF THE BARS AT THE COLUMN STRIPS SHALL BE APPROXIMATELY ONE AND ONE-HALF (1-1/2) TIMES THAT IN THE MIDDLE STRIPS BUT IN NO CASE GREATER THAN TWO AND ONE-HALF (2-1/2) TIMES THE SLAB THICKNESS OR 450mm
4. TEMPERATURE BARS FOR SLABS SHALL BE GENERALLY PLACED NEAR THE FACE IN TENSION AND SHALL NOT BE LESS THAN 10/25 BT. (See Table 7)

SLAB THICKNESS (mm)	MINIMUM TEMPERATURE BARS
100	100mm at 275mm O.C
114	10mm at 241mm O.C
127	10mm at 216mm O.C

5. PROVIDE EXTRA REINFORCEMENT FOR CORNER SLAB (TWO ADJACENT DISCONTINUOUS EDGES) AS SHOWN BELOW AND AT ENDS AND CORNERS OF SHEAR WALL (See FIG. 10)



CORNER SLAB

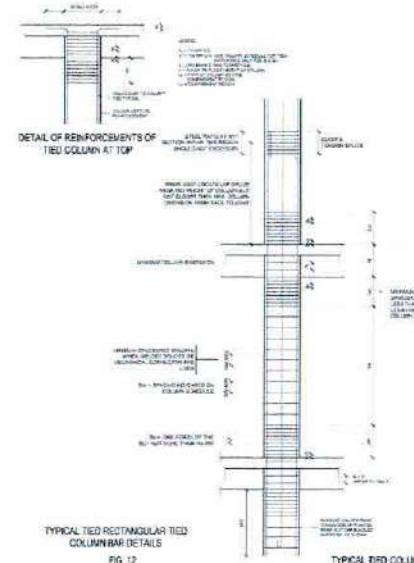
FIG. 10

6. SEE MECHANICAL, PLUMBING, ELECTRICAL AND FIRE PROTECTION DRAWINGS FOR ALL SUSPENDED AND EMBEDDED RING CONDUITS DUCTWORK EQUIPMENT ETC.
7. UNLESS OTHERWISE NOTED, EMBEDDED CONDUITS SHALL BE RUN GENERALLY AT MID-BAY AND PARALLEL CONDUITS SHALL BE AT THREE DIAMETERS ON CENTER. CONDUIT SIZE NOT EXCEED 1/4 OF THE SLAB THICKNESS AND SHALL BE LOCATED AT MID THICKNESS OF THE SLAB.

I. NOTES ON COLUMNS

1. WHERE COLUMN CHANGE IN SIZE, VERTICAL REINFORCEMENTS SHALL BE OFFSET AT A SLOPE NOT MORE THAN 1:8. PROVIDE TRANSVERSE REINFORCEMENT AS PER ITEM 6 BELOW FOR JOINTS WITH BAR OFFSETS (AS SHOWN ON FIGURE 11)

3. LAP SPLICES, WHEN REQUIRED, ARE PERMITTED ONLY WITHIN THE CENTER HALF OF THE COLUMN LENGTH AND SHALL BE PROPORTIONED AS TENSION SPLICES. IN NO CASE SHALL THE LAP SPLICE BE LOCATED CLOSER THAN A DISTANCE EQUAL TO THE MAXIMUM COLUMN DIMENSION FROM THE FACE OF THE BEAM-COLUMN JOINT. PROVIDE EXTRA TRANSVERSE REINFORCEMENT OF THE SAME SIZE AND ARRANGEMENT INDICATED IN THE COLUMN SCHEDULE SPACED AT MOST ONE-FOURTH THE MINIMUM COLUMN SECTION DIMENSION THROUGHOUT THE LENGTH OF THE SPLICE OR 100mm
3. WELDED SPLICES AND MECHANICAL CONNECTIONS MAY BE USED AT ANY SECTION PROVIDED NOT MORE THAN ALTERNATE BARS IN EACH LAYER AT LONGITUDINAL REINFORCEMENT ARE SPLICED AT ANY SECTION AND THE CENTER TO CENTER DISTANCE BETWEEN SPLICES OF ADJACENT BARS MUST BE 600 mm OR MORE MEASURED ALONG THE AXIS OF THE COLUMN.
4. WELDED SPLICES AND MECHANICAL CONNECTIONS SHALL BE AS INDICATED UNDER ITEMS 8, 9, AND 10 OF THE NOTES ON REINFORCING STEEL BARS ON SHEETS 1.
8. FOR ALL TIED COLUMNS, PROVIDE TRANSVERSE REINFORCEMENT OF THE SAME SIZE AND ARRANGEMENT INDICATED IN THE COLUMN SECTION SCHEDULE AND SPACED NO GREATER THAN ONE-QUARTER THE MINIMUM COLUMN SECTION DIMENSION NOR 100mm, OR A DISTANCE FROM EACH JOINT FACE OF NOT LESS THAN THE LARGER OF THE MAXIMUM COLUMN SECTION DIMENSION OR ONE-SIXTH OF THE CLEAR HEIGHT OF THE COLUMN 3 450mm
8. BEAM-COLUMN JOINTS SHALL BE PROVIDED WITH TRANSVERSE REINFORCEMENT SPACED AT TWICE THAT REQUIRED BY ITEM 6 WHEN THERE ARE BEAMS HAVING WIDTHS AT LEAST ONE-HALF THE COLUMN WIDTH AND DEPTHS NOT LESS THAN THREE-QUARTERS OF THE DEEPEST BEAM THAT FRAME INTO FOUR SIDES OF THE COLUMN. FOR ALL OTHER CONDITIONS PROVIDE SAME SPACING AS REQUIRED IN ITEM 6 UNLESS OTHERWISE DETAILED. TYPICAL BAR DETAILS FOR TIED COLUMNS ARE AS SHOWN IN FIGURE 12.



TYPICAL TIED RECTANGULAR TIED COLUMN BAR DETAILS

FIG. 12

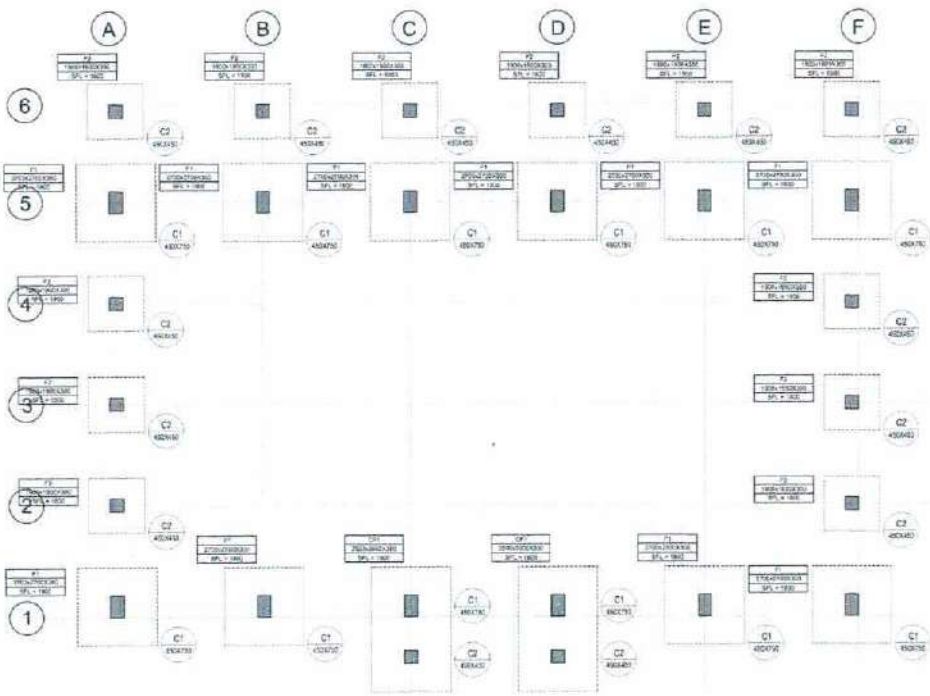
TYPICAL TIED COLUMN BAR DETAILS

<p>ENGR. ROMAR N. BONTO CIVIL ENGINEER</p>		<p>PROJECT TITLE/ LOCATION: EXPANSION OF THE MODERNIZATION OF DBM REGION 5 FACILITIES PHASE 2</p>	<p>APPROVED BY: FRANCIS C. BAUTISTA Acting Director IV Department of Budget and Management - Region V</p>	<p>RA 9266 Sec. 33</p>	<p>SHEET CONTENT AS SHOWN</p>	<p>SHEET NO. S 02</p>
<p>PRC 0172424</p>	<p>PTR 2930693</p>	<p>DBM COMPOUND, REGIONAL GOVERNMENT CENTER, LEGAZPI CITY</p>	<p>OWNER</p>	<p>THESE DRAWINGS AND SPECIFICATIONS AND OTHER CONTRACT DOCUMENTS JULY SIGNED, STAMPED OR SEALED AS INSTRUMENT OF SERVICES, ARE THE ORIGINAL PROPERTY AND DOCUMENT OF THE ARCHITECT. WHETHER THE OBJECT FOR WHICH THEY ARE MADE EXHAUSTED OR NOT, IT SHALL BE UNLAWFUL FOR ANY PERSON TO DUPLICATE OR TO MAKE COPIES OF SAID DOCUMENTS FOR USE IN THE REPRODUCTION OF AND FOR OTHER PROJECTS OR THE BUILDINGS WHETHER EXECUTED PARTIALLY OR IN WHOLE. WITHOUT THE WRITTEN CONSENT OF THE ARCHITECT OR AUTHOR OF SAID DOCUMENTS.</p>		
<p>VALIDITY JAN. 31, 2025</p>	<p>DATE JAN. 8, 2024</p>					
<p>TIN 442-765-690</p>	<p>PLACE BAGACAY, ALBAY</p>					

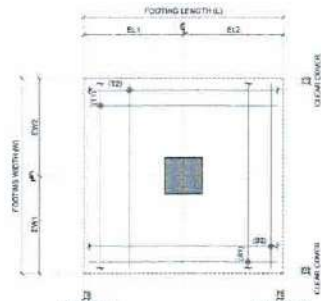
FOOTING REINFORCEMENT SCHEDULE:

FOOTING DESIGNATION	TYPE	FOOTING DIMENSION								REINFORCEMENT DETAILS				
		LENGTH (L)	WIDTH (W)	THICKNESS (T)	DEPTH (D)	L1	EL1	EL2	EW1	EW2	T1	B1	T2	B2
F1	ISOLATED	2700	2700	300	-1800	-	1350	1350	1350	1350	16Ø-190	16Ø-190	16Ø-190	16Ø-190
F2	ISOLATED	1900	1900	300	-1800	-	950	950	950	950	16Ø-190	16Ø-190	16Ø-190	16Ø-190
F3	ISOLATED	1500	1500	300	-1800	-	750	750	750	750	16Ø-190	16Ø-190	16Ø-190	16Ø-190
F4	ISOLATED	1300	1300	300	-1800	-	650	650	650	650	16Ø-190	16Ø-190	16Ø-190	16Ø-190
CF1	COMBINED	3900	2500	300	-1800	1775	1075	1050	1250	1250	16Ø-230	16Ø-230	16Ø-230	16Ø-230

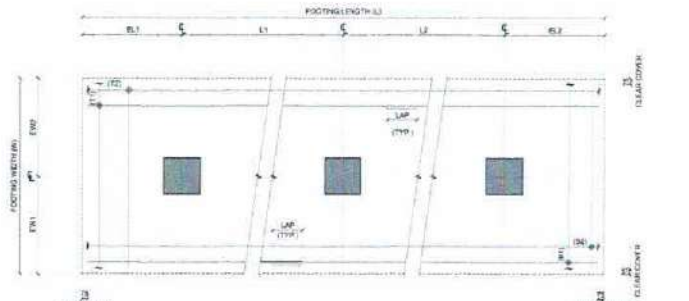
NOTE:
 1. ALL DIMENSIONS ARE IN MILLIMETERS UNLESS OTHERWISE SPECIFIED.
 2. REFER TO THE GENERAL NOTES FOR THE PROJECT.
 3. ALL DIMENSIONS ARE TO FACE UNLESS OTHERWISE SPECIFIED.
 4. REFER TO THE GENERAL NOTES FOR THE PROJECT.
 5. REFER TO THE GENERAL NOTES FOR THE PROJECT.
 6. REFER TO THE GENERAL NOTES FOR THE PROJECT.
 7. REFER TO THE GENERAL NOTES FOR THE PROJECT.
 8. REFER TO THE GENERAL NOTES FOR THE PROJECT.
 9. REFER TO THE GENERAL NOTES FOR THE PROJECT.
 10. REFER TO THE GENERAL NOTES FOR THE PROJECT.
 11. REFER TO THE GENERAL NOTES FOR THE PROJECT.
 12. REFER TO THE GENERAL NOTES FOR THE PROJECT.
 13. REFER TO THE GENERAL NOTES FOR THE PROJECT.
 14. REFER TO THE GENERAL NOTES FOR THE PROJECT.
 15. REFER TO THE GENERAL NOTES FOR THE PROJECT.
 16. REFER TO THE GENERAL NOTES FOR THE PROJECT.
 17. REFER TO THE GENERAL NOTES FOR THE PROJECT.
 18. REFER TO THE GENERAL NOTES FOR THE PROJECT.
 19. REFER TO THE GENERAL NOTES FOR THE PROJECT.
 20. REFER TO THE GENERAL NOTES FOR THE PROJECT.
 21. REFER TO THE GENERAL NOTES FOR THE PROJECT.
 22. REFER TO THE GENERAL NOTES FOR THE PROJECT.
 23. REFER TO THE GENERAL NOTES FOR THE PROJECT.
 24. REFER TO THE GENERAL NOTES FOR THE PROJECT.
 25. REFER TO THE GENERAL NOTES FOR THE PROJECT.
 26. REFER TO THE GENERAL NOTES FOR THE PROJECT.
 27. REFER TO THE GENERAL NOTES FOR THE PROJECT.
 28. REFER TO THE GENERAL NOTES FOR THE PROJECT.
 29. REFER TO THE GENERAL NOTES FOR THE PROJECT.
 30. REFER TO THE GENERAL NOTES FOR THE PROJECT.
 31. REFER TO THE GENERAL NOTES FOR THE PROJECT.
 32. REFER TO THE GENERAL NOTES FOR THE PROJECT.
 33. REFER TO THE GENERAL NOTES FOR THE PROJECT.
 34. REFER TO THE GENERAL NOTES FOR THE PROJECT.
 35. REFER TO THE GENERAL NOTES FOR THE PROJECT.
 36. REFER TO THE GENERAL NOTES FOR THE PROJECT.
 37. REFER TO THE GENERAL NOTES FOR THE PROJECT.
 38. REFER TO THE GENERAL NOTES FOR THE PROJECT.
 39. REFER TO THE GENERAL NOTES FOR THE PROJECT.
 40. REFER TO THE GENERAL NOTES FOR THE PROJECT.
 41. REFER TO THE GENERAL NOTES FOR THE PROJECT.
 42. REFER TO THE GENERAL NOTES FOR THE PROJECT.
 43. REFER TO THE GENERAL NOTES FOR THE PROJECT.
 44. REFER TO THE GENERAL NOTES FOR THE PROJECT.
 45. REFER TO THE GENERAL NOTES FOR THE PROJECT.
 46. REFER TO THE GENERAL NOTES FOR THE PROJECT.
 47. REFER TO THE GENERAL NOTES FOR THE PROJECT.
 48. REFER TO THE GENERAL NOTES FOR THE PROJECT.
 49. REFER TO THE GENERAL NOTES FOR THE PROJECT.
 50. REFER TO THE GENERAL NOTES FOR THE PROJECT.
 51. REFER TO THE GENERAL NOTES FOR THE PROJECT.
 52. REFER TO THE GENERAL NOTES FOR THE PROJECT.
 53. REFER TO THE GENERAL NOTES FOR THE PROJECT.
 54. REFER TO THE GENERAL NOTES FOR THE PROJECT.
 55. REFER TO THE GENERAL NOTES FOR THE PROJECT.
 56. REFER TO THE GENERAL NOTES FOR THE PROJECT.
 57. REFER TO THE GENERAL NOTES FOR THE PROJECT.
 58. REFER TO THE GENERAL NOTES FOR THE PROJECT.
 59. REFER TO THE GENERAL NOTES FOR THE PROJECT.
 60. REFER TO THE GENERAL NOTES FOR THE PROJECT.
 61. REFER TO THE GENERAL NOTES FOR THE PROJECT.
 62. REFER TO THE GENERAL NOTES FOR THE PROJECT.
 63. REFER TO THE GENERAL NOTES FOR THE PROJECT.
 64. REFER TO THE GENERAL NOTES FOR THE PROJECT.
 65. REFER TO THE GENERAL NOTES FOR THE PROJECT.
 66. REFER TO THE GENERAL NOTES FOR THE PROJECT.
 67. REFER TO THE GENERAL NOTES FOR THE PROJECT.
 68. REFER TO THE GENERAL NOTES FOR THE PROJECT.
 69. REFER TO THE GENERAL NOTES FOR THE PROJECT.
 70. REFER TO THE GENERAL NOTES FOR THE PROJECT.
 71. REFER TO THE GENERAL NOTES FOR THE PROJECT.
 72. REFER TO THE GENERAL NOTES FOR THE PROJECT.
 73. REFER TO THE GENERAL NOTES FOR THE PROJECT.
 74. REFER TO THE GENERAL NOTES FOR THE PROJECT.
 75. REFER TO THE GENERAL NOTES FOR THE PROJECT.
 76. REFER TO THE GENERAL NOTES FOR THE PROJECT.
 77. REFER TO THE GENERAL NOTES FOR THE PROJECT.
 78. REFER TO THE GENERAL NOTES FOR THE PROJECT.
 79. REFER TO THE GENERAL NOTES FOR THE PROJECT.
 80. REFER TO THE GENERAL NOTES FOR THE PROJECT.
 81. REFER TO THE GENERAL NOTES FOR THE PROJECT.
 82. REFER TO THE GENERAL NOTES FOR THE PROJECT.
 83. REFER TO THE GENERAL NOTES FOR THE PROJECT.
 84. REFER TO THE GENERAL NOTES FOR THE PROJECT.
 85. REFER TO THE GENERAL NOTES FOR THE PROJECT.
 86. REFER TO THE GENERAL NOTES FOR THE PROJECT.
 87. REFER TO THE GENERAL NOTES FOR THE PROJECT.
 88. REFER TO THE GENERAL NOTES FOR THE PROJECT.
 89. REFER TO THE GENERAL NOTES FOR THE PROJECT.
 90. REFER TO THE GENERAL NOTES FOR THE PROJECT.
 91. REFER TO THE GENERAL NOTES FOR THE PROJECT.
 92. REFER TO THE GENERAL NOTES FOR THE PROJECT.
 93. REFER TO THE GENERAL NOTES FOR THE PROJECT.
 94. REFER TO THE GENERAL NOTES FOR THE PROJECT.
 95. REFER TO THE GENERAL NOTES FOR THE PROJECT.
 96. REFER TO THE GENERAL NOTES FOR THE PROJECT.
 97. REFER TO THE GENERAL NOTES FOR THE PROJECT.
 98. REFER TO THE GENERAL NOTES FOR THE PROJECT.
 99. REFER TO THE GENERAL NOTES FOR THE PROJECT.
 100. REFER TO THE GENERAL NOTES FOR THE PROJECT.



FOUNDATION PLAN
 SCALE: 1:500 PLS



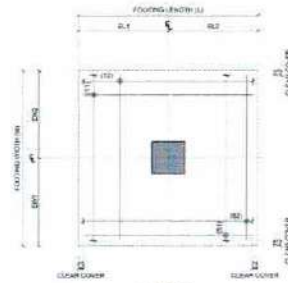
TYPICAL DETAIL FOR ISOLATED FOOTINGS
 SCALE: 1:40 PLS



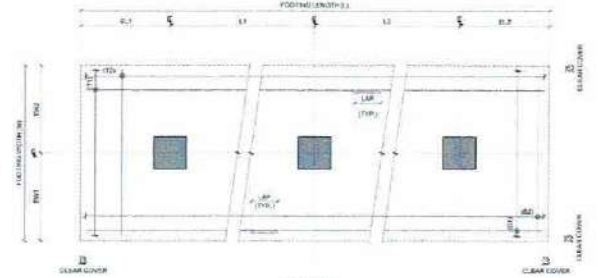
TYPICAL DETAIL FOR COMBINED FOOTINGS
 SCALE: 1:40 PLS

ENGR. ROMAR N. BONTO CIVIL ENGINEER		PROJECT TITLE/ LOCATION: EXPANSION OF THE MODERNIZATION OF DBM REGION 5 FACILITIES PHASE 2	APPROVED BY: FRANCIS C. BAUTISTA Acting Director IV Department of Budget and Management - Region V OWNER	RA 9266 Sec. 33 THESE DRAWINGS AND SPECIFICATIONS AND OTHER CONTRACT DOCUMENTS DULY SIGNED, STAMPED OR SEALED AS INSTRUMENT OF SERVICES, ARE THE INTELLECTUAL PROPERTY AND DOCUMENT OF THE ARCHITECT, WHETHER THE OBJECT FOR WHICH THEY ARE MADE EXECUTED OR NOT. IT SHALL BE UNLAWFUL FOR ANY PERSON TO DUPLICATE OR TO MAKE COPIES OF SAID DOCUMENTS FOR USE IN THE REPRODUCTION OF AND FOR OTHER PROJECTS OR THE BUILDINGS, WHETHER EXECUTED PARTLY OR IN WHOLE, WITHOUT THE WRITTEN CONSENT OF THE ARCHITECT OR AUTHOR OF SAID DOCUMENTS.	SHEET CONTENT AS SHOWN	SHEET NO. S 04
PRC: 0172424 VALIDITY: JAN. 31, 2025 TIN: 442-785-690	PTR: 2930693 DATE: JAN. 8, 2024 PLACE: BACAYAN, ALBAY	DBM COMPOUND, REGIONAL GOVERNMENT CENTER, LEGAZPI CITY				

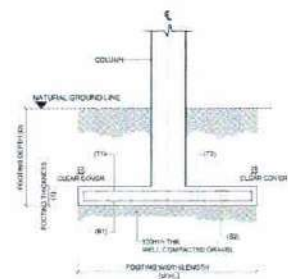
SCHEDULE OF GRADE BEAMS (ELEV +00.00)					
Fy = 414MPa (MAIN), Fy = 276 MPa (SHEAR), Fc = 28MPa					
MARK	DIMENSION	BAR ARRANGEMENT			STIRRUPS SPACING (10mm @)
		LEFT SUPPORT	MID-SPAN	RIGHT SUPPORT	
GB1	300 X 400	3-100 3-180	3-100 3-160	3-160 3-160	CONCRETE COVER = 75mm 2L - 1 @ 50, 11 @ 80 C/C (LEFT SUPPORT) 2L - REST @ 140 C/C (MID-SPAN) 2L - 1 @ 50, 11 @ 80 C/C (RIGHT SUPPORT)



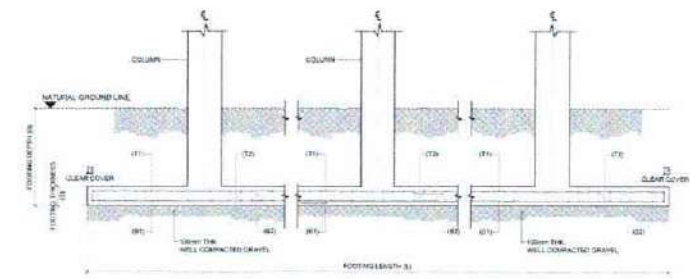
PLAN
TYPICAL END SPAN



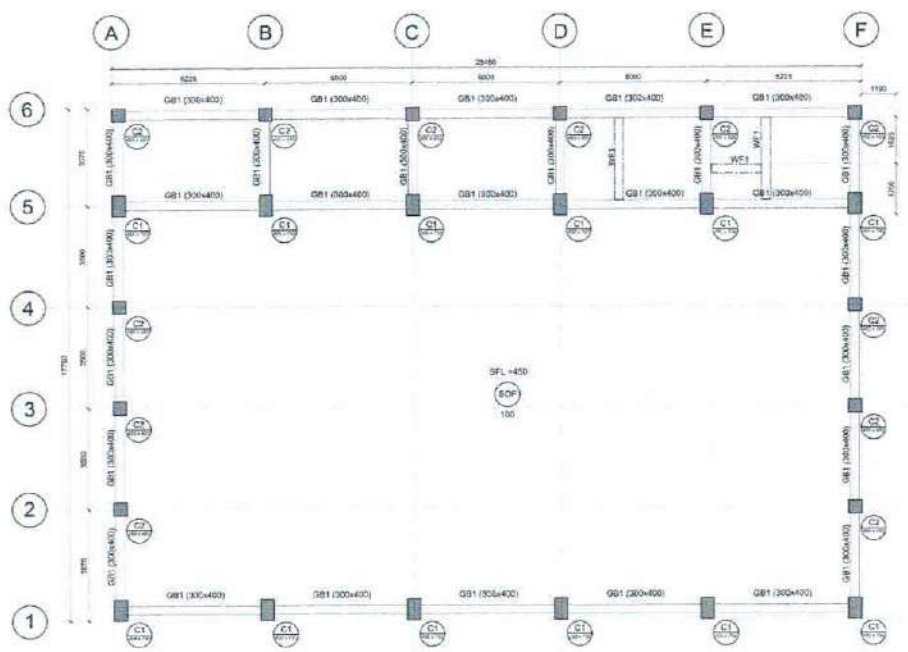
PLAN
TYPICAL INTERIOR SPAN



SECTION
TYPICAL SINGLE SPAN



SECTION
TYPE A - CANTILEVER
TYPE B - CANTILEVER



GRADE BEAM PLAN
SCALE: 1:100

SLAB ON FILL REINFORCEMENT SCHEDULE:

SLAB MARK	THICKNESS	BAR SIZE	REINFORCEMENT
SOF	100	100	B1 200 B2 200

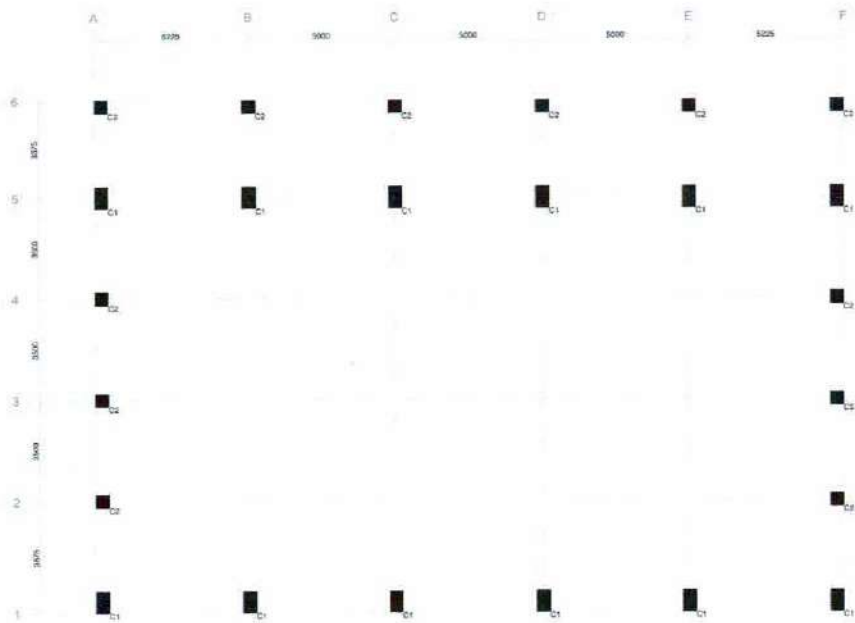
LEGENDS

C1 (300x400)	COLUMN MARK & SIZE
SOF	SLAB ON FILL
100	SLAB THICKNESS

REVISIONS

NO.	DESCRIPTION	DATE	BY	CHECKED
1	ISSUED FOR PERMITTING	2024-01-08	FRANCIS C. BAUTISTA	FRANCIS C. BAUTISTA

ENGR. ROMAR N. BONTO CIVIL ENGINEER		PROJECT TITLE/ LOCATION: EXPANSION OF THE MODERNIZATION OF DBM REGION 5 FACILITIES PHASE 2	APPROVED BY: FRANCIS C. BAUTISTA Acting Director IV Department of Budget and Management - Region V	RA 9266 Sec. 33 THESE DRAWINGS AND SPECIFICATIONS AND OTHER CONTRACT DOCUMENTS DULY SIGNED, STAMPED OR SEALED AS INSTRUMENT OF SERVICES, ARE THE INTELLECTUAL PROPERTY AND DOCUMENT OF THE ARCHITECT. WHETHER THE OBJECT FOR WHICH THEY ARE MADE EXECUTED OR NOT, IT SHALL BE UNLAWFUL FOR ANY PERSON TO DUPLICATE OR TO MAKE COPIES OF SAID DOCUMENTS FOR USE IN THE REPRODUCTION OF AND FOR OTHER PROJECTS OR THE BUILDINGS, WHETHER EXECUTED PARTLY OR IN WHOLE, WITHOUT THE WRITTEN CONSENT OF THE ARCHITECT OR AUTHOR OF SAID DOCUMENTS.	SHEET CONTENT AS SHOWN	SHEET NO. S 05
PRC 0172424 VALIDITY JAN. 31, 2028 TIN 442-705-990	PTR 2930693 DATE JAN. 8, 2024 PLACE BACACAY, ALBAY	DBM COMPOUND, REGIONAL GOVERNMENT CENTER, LEGAZPI CITY	OWNER			

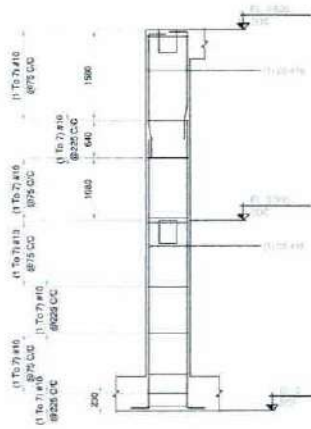


COLUMN LAYOUT
SCALE: 1:300

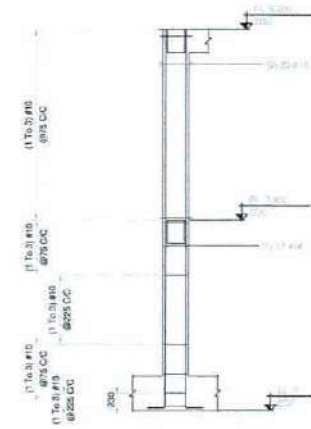
COLUMN MARKED	C1	C2	C3
LINK ARRANGEMENT			
LINK BEYOND CONFINEMENT ZONE	11.7x11.7 #10 @ 200mm CC	11.7x11.7 #10 @ 200mm CC	11.7x11.7 #10 @ 200mm CC
CONFINEMENT ZONE	11.7x11.7 #10 @ 200mm CC	11.7x11.7 #10 @ 200mm CC	11.7x11.7 #10 @ 200mm CC
LINK @ CONFINEMENT ZONE	11.7x11.7 #10 @ 200mm CC	11.7x11.7 #10 @ 200mm CC	11.7x11.7 #10 @ 200mm CC
REBAR ARRANGEMENT			

COLUMN SCHEDULE

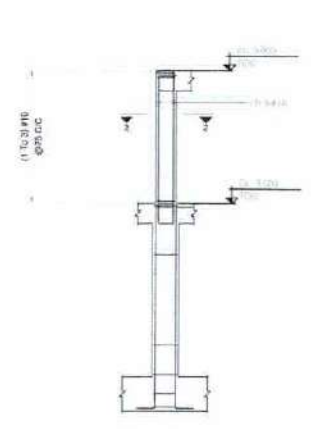
- NOTES:
 1. BE - BOUNDARY ELEMENT AS PER ACI 318M - 2014. PROVIDE CONFINING REINFORCEMENT ACROSS ENTIRE HEIGHT OF WALL IN THE BOUNDARY ELEMENT
 2. Z1 - SPECIAL CONFINING ZONE AS PER ACI 318M - 2014. Z2 - REMAINING ZONES AS PER ACI 318M - 2014



DETAIL OF COLUMN C1
SCALE: 1:300



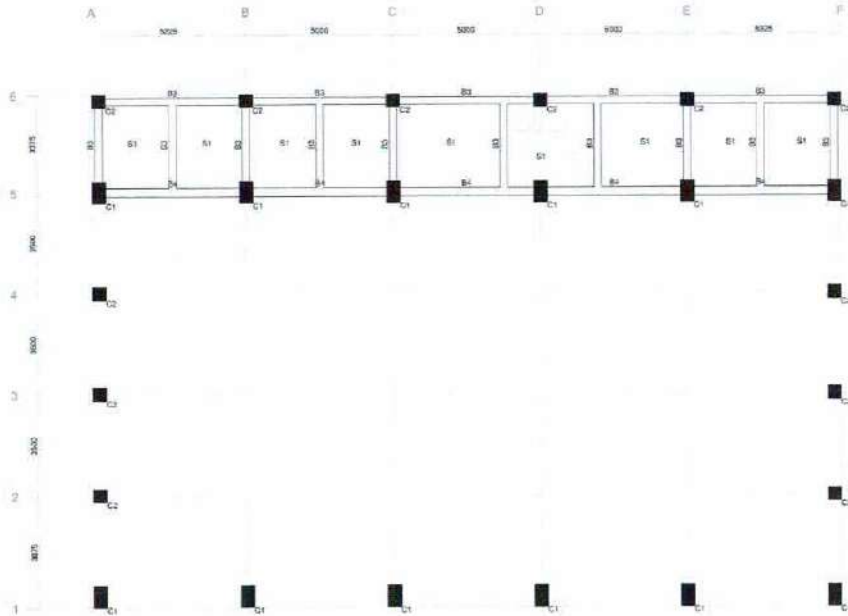
DETAIL OF COLUMN C2
SCALE: 1:300



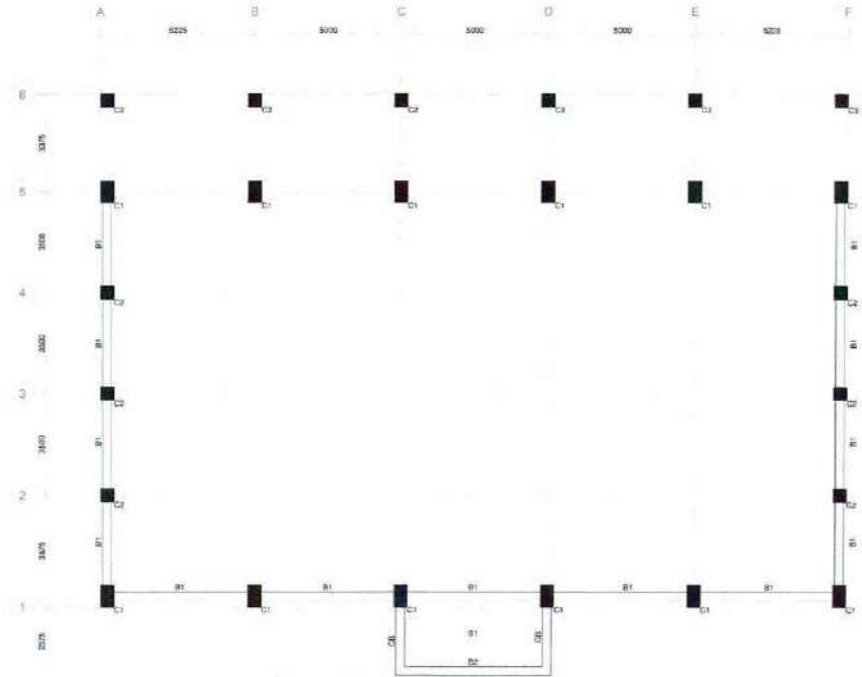
DETAIL OF COLUMN C3
SCALE: 1:300

 ENGR. ROMAR N. BONTO CIVIL ENGINEER				PROJECT TITLE/ LOCATION:	APPROVED BY:	RA 9266 Sec. 33	SHEET CONTENT	SHEET NO.
				EXPANSION OF THE MODERNIZATION OF DBM REGION 5 FACILITIES PHASE 2 DBM COMPOUND, REGIONAL GOVERNMENT CENTER, LEGAZPI CITY	 FRANCIS C. BAUTISTA Acting Director IV Department of Budget and Management - Region V OWNER	THESE DRAWINGS AND SPECIFICATIONS AND OTHER CONTRACT DOCUMENTS DULY SIGNED, STAMPED OR SEALED AS INSTRUMENT OF SERVICES, ARE THE INTELLECTUAL PROPERTY AND DOCUMENT OF THE ARCHITECT. WHETHER THE OBJECT FOR WHICH THEY ARE MADE, EXECUTED OR NOT, IT SHALL BE UNLAWFUL FOR ANY PERSON TO DUPLICATE OR TO MAKE COPIES OF SAID DOCUMENTS FOR USE IN THE REPRODUCTION OF AND FOR OTHER PROJECTS OR THE BUILDINGS, WHETHER EXECUTED PARTIALLY OR IN WHOLE, WITHOUT THE WRITTEN CONSENT OF THE ARCHITECT OR AUTHOR OF SAID DOCUMENTS.	AS SHOWN	S 06
PRC 0172424 PTR 2930693 VALIDITY JAN. 31, 2025 DATE JAN. 8, 2024 TIN 442-789-690 PLACE BACACAY, ALBAY								

CB	300	350	3-#16	3-#16	3-#16	4-#15 + 2-#16	4-#15 + 2-#16	4-#15 + 2-#16	#10@140 C/C	#10@140 C/C	#10@140 C/C
CB2	200	300	2-#16	2-#16	2-#16	3-#16	3-#16	3-#16	4-2L-#10@90 C/C	3-2L-#10@90 C/C	4-2L-#10@90 C/C
CB3	250	350	3-#16	3-#16	3-#16	3-#16 + 2-#16	3-#16 + 2-#16	3-#16 + 2-#16	#10@75 C/C	#10@115 C/C	#10@75 C/C
B4	300	400	3-#16	3-#16	3-#16	4-#16	4-#16	4-#16	#10@80 C/C	#10@140 C/C	#10@80 C/C
B5	250	350	2-#16	2-#16	2-#16	3-#16	3-#16	3-#16	#10@75 C/C	#10@115 C/C	#10@75 C/C
B6	300	400	3-#16	3-#16	3-#16	4-#15 + 4-#15	4-#15 + 4-#15	4-#15 + 4-#15	#10@90 C/C	#10@140 C/C	#10@90 C/C
B7	350	500	5-#16	5-#16	5-#16	5-#15 + 5-#16	5-#15 + 5-#16	5-#15 + 5-#16	#10@85 C/C	#10@75 C/C	#10@85 C/C
B8	200	300	2-#16	2-#16	2-#16	2-#16	2-#16	2-#16	19-2L-#10@90 C/C	17-2L-#10@90 C/C	19-2L-#10@90 C/C



LVL 3.0M
BEAM LAYOUT
SCALE 1:100 (1/8"=1'-0")



LVL 4.0M
BEAM LAYOUT
SCALE 1:100 (1/8"=1'-0")

ENGR. ROMAR N. BONTO
CIVIL ENGINEER

PRC	0172424	PTR	2930693
VALIDITY	JAN. 31, 2025	DATE	JAN. 8, 2024
TIN	442-765-690	PLACE	BACACAY, ALEBAY

PROJECT TITLE/ LOCATION:
EXPANSION OF THE MODERNIZATION
OF DBM REGION 5 FACILITIES PHASE 2

DBM COMPOUND, REGIONAL GOVERNMENT CENTER, LEGAZPI CITY

APPROVED BY:

FRANCIS C. BAUTISTA
Acting Director IV
Department of Budget and Management - Region V

OWNER

RA 9266 Sec. 33

THESE DRAWINGS AND SPECIFICATIONS AND OTHER CONTRACT DOCUMENTS DULY SIGNED, STAMPED OR SEALED AS INSTRUMENT OF SERVICES, ARE THE INTELLECTUAL PROPERTY AND DOCUMENT OF THE ARCHITECT. WHETHER THE OBJECT FOR WHICH THEY ARE MADE EXECUTED OR NOT, IT SHALL BE UNLAWFUL FOR ANY PERSON TO DUPLICATE OR TO MAKE COPIES OF SAID DOCUMENTS FOR USE IN THE REPRODUCTION OF AND FOR OTHER PROJECTS OR THE BUILDINGS, WHETHER EXECUTED PARTLY OR IN WHOLE, WITHOUT THE WRITTEN CONSENT OF THE ARCHITECT OR AUTHOR OF SAID DOCUMENTS.

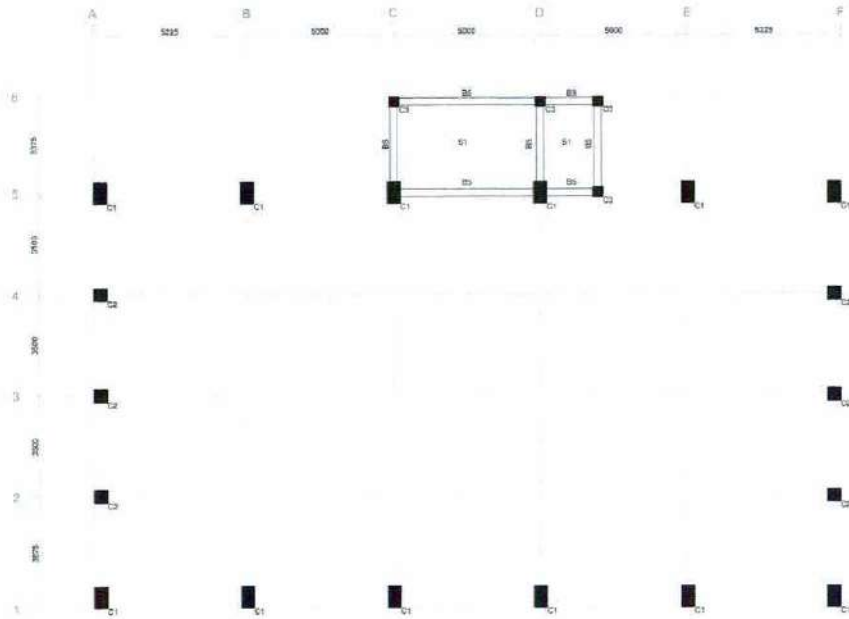
SHEET CONTENT
AS SHOWN

SHEET NO.

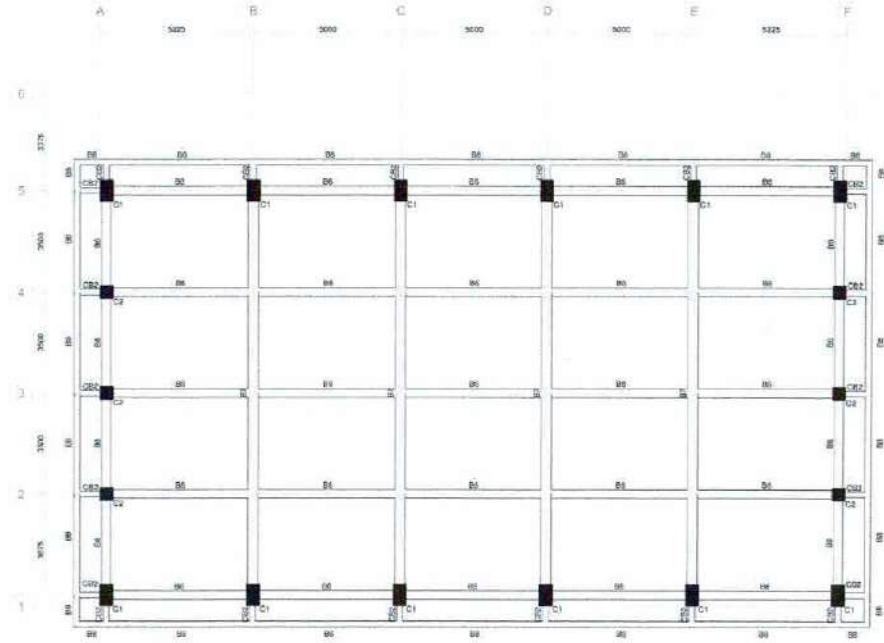
S
07

BEAM SCHEDULE

BEAM NUMBERS	SIZE		BOTTOM REINFORCEMENT			TOP REINFORCEMENT			SHEAR STIRRUPS		
	B	D	LEFT	MID SPAN	RIGHT	LEFT	MID SPAN	RIGHT	LEFT	MID SPAN	RIGHT
B1	300	400	2-#16	2-#16	2-#16	3-#16	3-#16	3-#16	#10@90 C/C	#10@130 C/C	#10@80 C/C
B2	300	350	3-#16	3-#16	3-#16	3-#16	3-#16	3-#16	#10@150 C/C	#10@150 C/C	#10@150 C/C
CB	300	350	3-#16	3-#16	3-#16	4-#16 + 2-#16	4-#16 + 2-#16	4-#16 + 2-#16	#10@140 C/C	#10@140 C/C	#10@140 C/C
DB	200	300	2-#16	2-#16	2-#16	3-#16	3-#16	3-#16	4-2L-#10@90 C/C	2-2L-#10@90 C/C	4-2L-#10@90 C/C
B3	250	350	3-#16	3-#16	3-#16	3-#16 + 2-#16	3-#16	3-#16 + 2-#16	#10@75 C/C	#10@115 C/C	#10@75 C/C
B4	300	400	3-#16	3-#16	3-#16	4-#16	4-#16	4-#16	#10@80 C/C	#10@140 C/C	#10@80 C/C
B5	250	350	2-#16	2-#16	2-#16	3-#16	3-#16	3-#16	#10@75 C/C	#10@115 C/C	#10@75 C/C
B6	300	400	3-#16	3-#16	3-#16	4-#16 + 4-#16	4-#16	4-#16 + 4-#16	#10@90 C/C	#10@140 C/C	#10@90 C/C
B7	350	500	5-#16	5-#16	5-#16	5-#16 + 5-#16	5-#16	5-#16 + 5-#16	#10@85 C/C	#10@75 C/C	#10@85 C/C
B8	200	300	2-#16	2-#16	2-#16	2-#16	2-#16	2-#16	19-2L-#10@90 C/C	17-2L-#10@90 C/C	19-2L-#10@90 C/C



LVL 5.9M
BEAM LAYOUT
SCALE: 1/4"=1'-0"



LVL 6.6M
BEAM LAYOUT
SCALE: 1/4"=1'-0"

ENGR. ROMAR N. BONTO
CIVIL ENGINEER

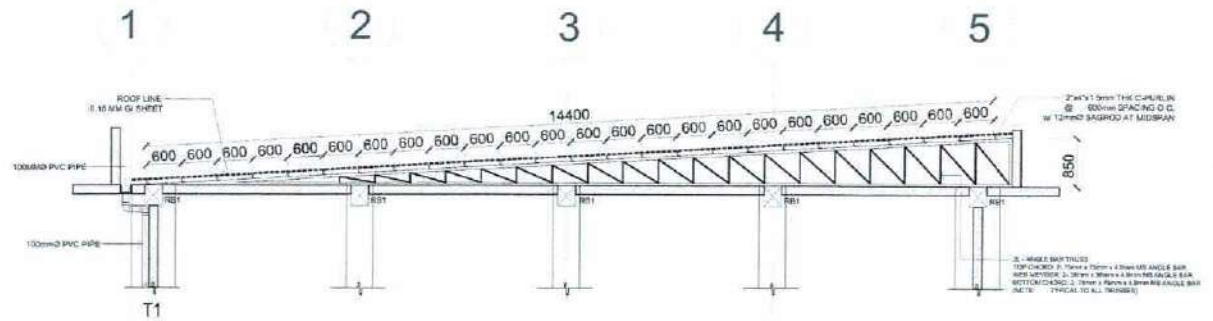
PRC	017242	PTR	2930593
VALIDITY	JAN. 31, 2028	DATE	JAN. 8, 2024
TIN	442-765-690	PLACE	BACACAY, ALBAY

PROJECT TITLE/ LOCATION:
**EXPANSION OF THE MODERNIZATION
OF DBM REGION 5 FACILITIES PHASE 2**
DBM COMPOUND, REGIONAL GOVERNMENT CENTER, LEGAZPI CITY

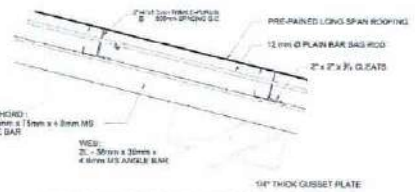
APPROVED BY:
FRANCIS C. BAUTISTA
Acting Director IV
Department of Budget and Management - Region V
OWNER

RA 9266 Sec. 33
THESE DRAWINGS AND SPECIFICATIONS AND OTHER CONTRACT DOCUMENTS DULY SIGNED, STAMPED OR SEALED AS INSTRUMENT OF SERVICES ARE THE INTELLECTUAL PROPERTY AND DOCUMENT OF THE ARCHITECT. WHENEVER THE OBJECT FOR WHICH THEY ARE MADE EXECUTED OR NOT, IT SHALL BE UNLAWFUL FOR ANY PERSON TO DUPLICATE OR TO MAKE COPIES OF SAID DOCUMENTS FOR USE IN THE REPETITION OF AND FOR OTHER PROJECTS OR THE BUILDINGS, WHETHER EXECUTED PARTLY OR IN WHOLE, WITHOUT THE WRITTEN CONSENT OF THE ARCHITECT OR AUTHOR OF SAID DOCUMENTS.

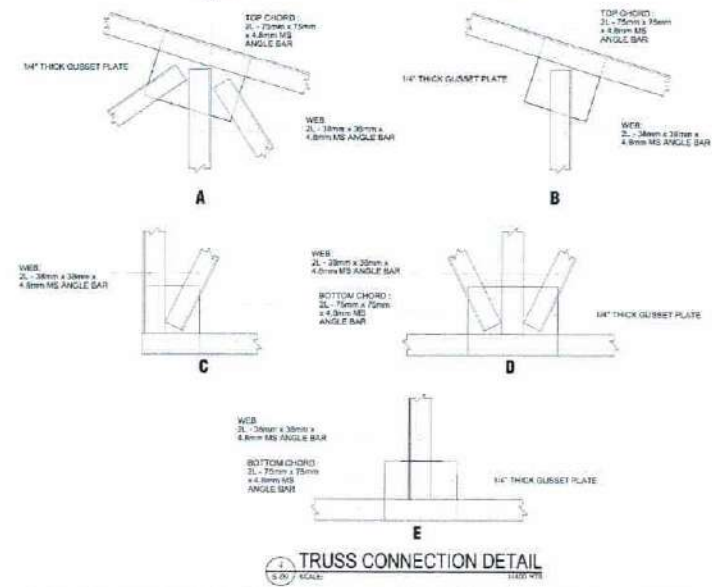
SHEET CONTENT	SHEET NO.
AS SHOWN	S
	08



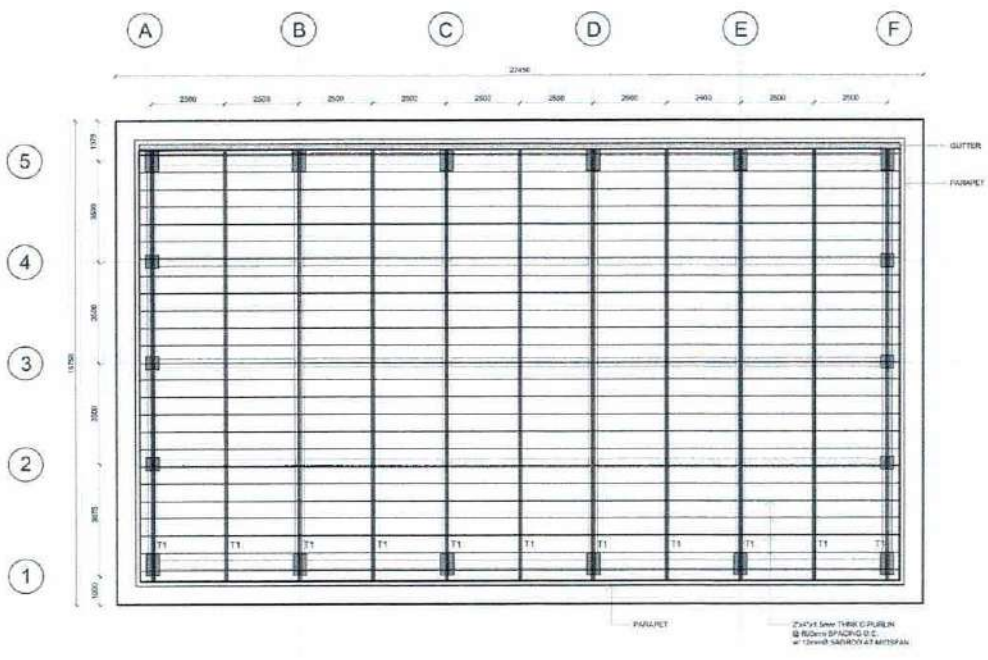
TRUSS DETAIL
1/8" SCALE



ROOFING & PURLINS CONNECTION
1/8" SCALE



TRUSS CONNECTION DETAIL
1/8" SCALE



ROOF FRAMING PLAN
1/8" SCALE

ENGR. ROMAR N. BONTO CIVIL ENGINEER			
PRC	0172424	PTR	2930893
VALIDITY	JAN. 31, 2028	DATE	JAN. 8, 2024
TIN	447-785-690	PLACE	BACACAY, ALBAY

PROJECT TITLE/ LOCATION:
EXPANSION OF THE MODERNIZATION OF DBM REGION 5 FACILITIES PHASE 2
DBM COMPOUND, REGIONAL GOVERNMENT CENTER, LEGAZPI CITY

APPROVED BY:
FRANCIS C. BAUTISTA
Acting Director IV
Department of Budget and Management - Region V
OWNER

RA 9266 Sec. 33
THESE DRAWINGS AND SPECIFICATIONS AND OTHER CONTRACT DOCUMENTS DULY BONDED, STAMPED OR SEALED AS INSTRUMENT OF SERVICES, ARE THE INTELLECTUAL PROPERTY AND DOCUMENT OF THE ARCHITECT. WHETHER THE OBJECT FOR WHICH THEY ARE MADE EXECUTED OR NOT, IT SHALL BE UNLAWFUL FOR ANY PERSON TO DUPLICATE OR TO MAKE COPIES OF SAID DOCUMENTS FOR USE IN THE REPRODUCTION OF AND FOR OTHER PROJECTS OR THE BUILDINGS, WHETHER EXECUTED PARTLY OR IN WHOLE, WITHOUT THE WRITTEN CONSENT OF THE ARCHITECT OR AUTHOR OF SAID DOCUMENTS.

SHEET CONTENT	SHEET NO.
AS SHOWN	S
	09





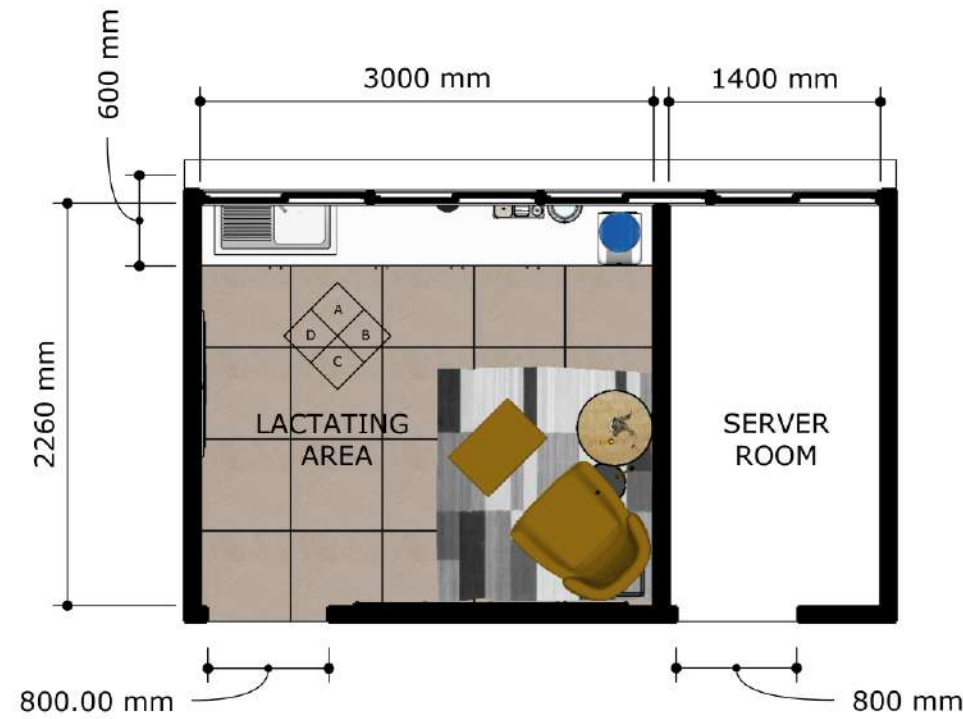
LACTATING AND SERVER ROOM

1

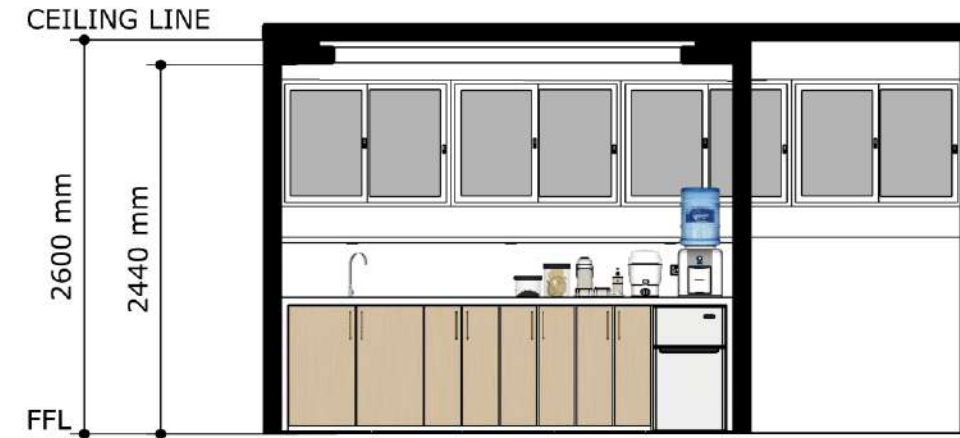
INTERIOR PERSPECTIVE

SCALE: NTS

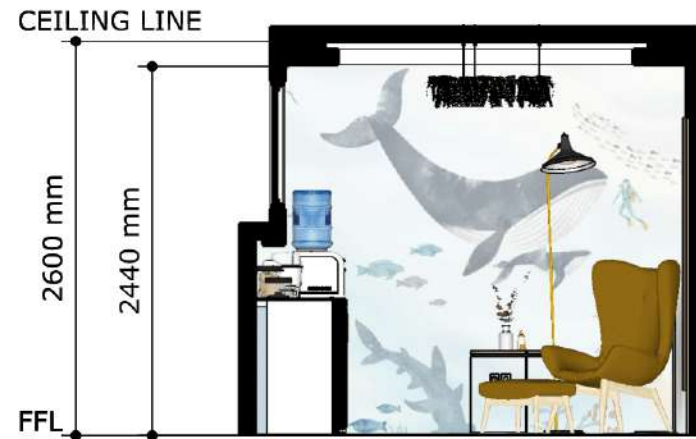
 AR. EFREN O. BELLEN JR. ARCHITECT		PROJECT TITLE/ LOCATION:	APPROVED BY:	RA 9266 Sec. 33	SHEET CONTENT	SHEET NO.
EXPANSION OF THE MODERNIZATION OF DBM REGION 5 FACILITIES PHASE 2		 FRANCIS C. BAUTISTA Acting Director IV Department of Budget & Management-Region V	THESE DRAWINGS AND SPECIFICATIONS AND OTHER CONTRACT DOCUMENTS DULY SIGNED, STAMPED OR SEALED AS INSTRUMENT OF SERVICES, ARE THE INTELLECTUAL PROPERTY AND DOCUMENT OF THE ARCHITECT, WHETHER THE OBJECT FOR WHICH THEY ARE MADE EXECUTED OR NOT. IT SHALL BE UNLAWFUL FOR ANY PERSON TO DUPLICATE OR TO MAKE COPIES OF SAID DOCUMENTS FOR USE IN THE REPETITION OF AND FOR OTHER PROJECTS OR THE BUILDINGS, WHETHER EXECUTED PARTLY OR IN WHOLE, WITHOUT THE WRITTEN CONSENT OF THE ARCHITECT OR AUTHOR OF SAID DOCUMENTS.	AS SHOWN	A	
PRC	46914	PTRK		2936234		01
VALIDITY	OCT. 12, 2025	DATE	JAN. 18, 2024			
TIN	733-679-410	PLACE	BACACAY	DBM COMPOUND, REGIONAL GOVERNMENT CENTER, LEGAZPI CITY		



1
A-02
LACTATING AND SERVER ROOM
FLOOR PLAN
SCALE: 1:50 MTS



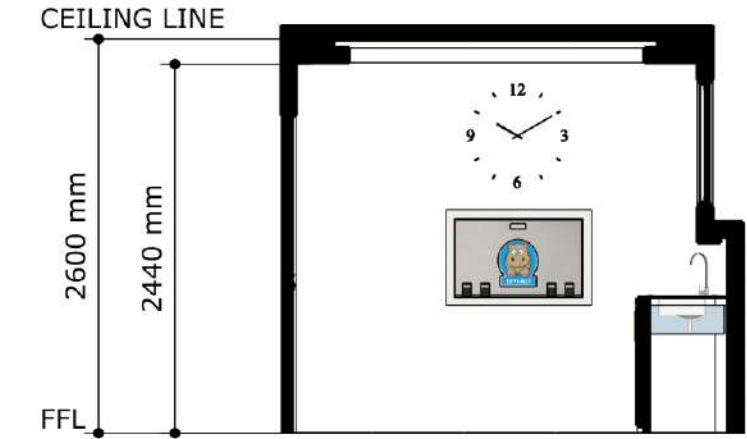
2
A-02
ELEVATION A
SCALE: 1:50 MTS



3
A-02
ELEVATION B
SCALE: 1:50 MTS

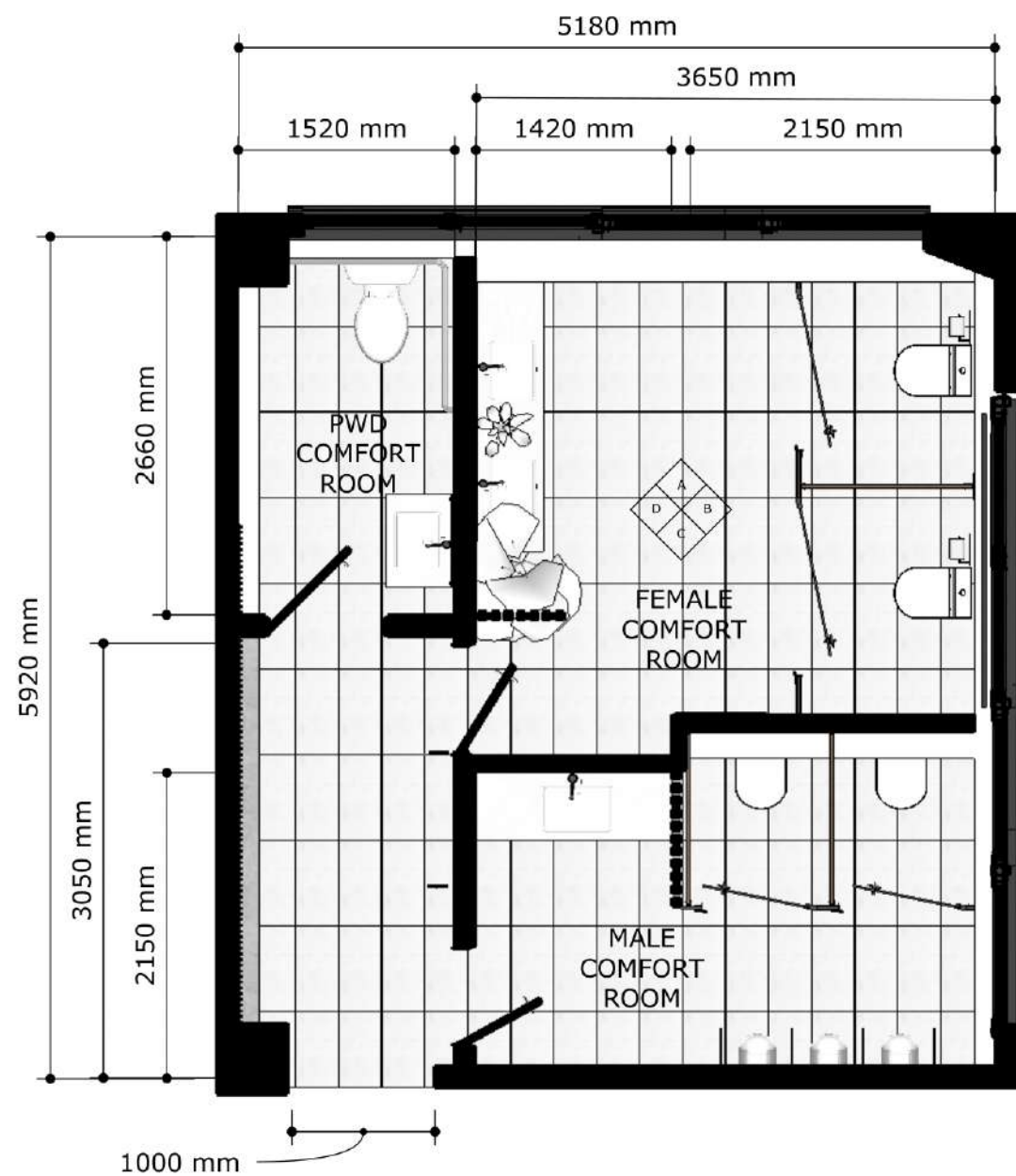


4
A-02
ELEVATION C
SCALE: 1:50 MTS



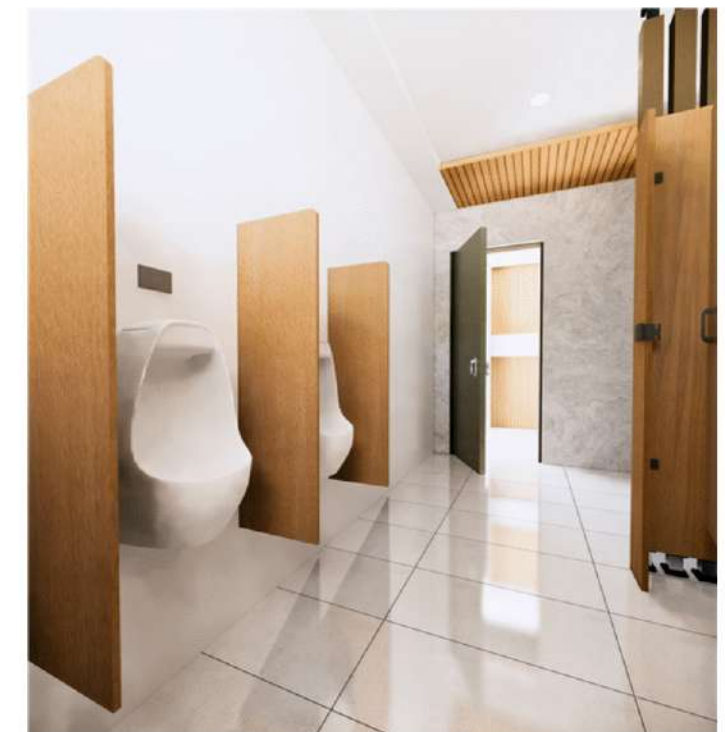
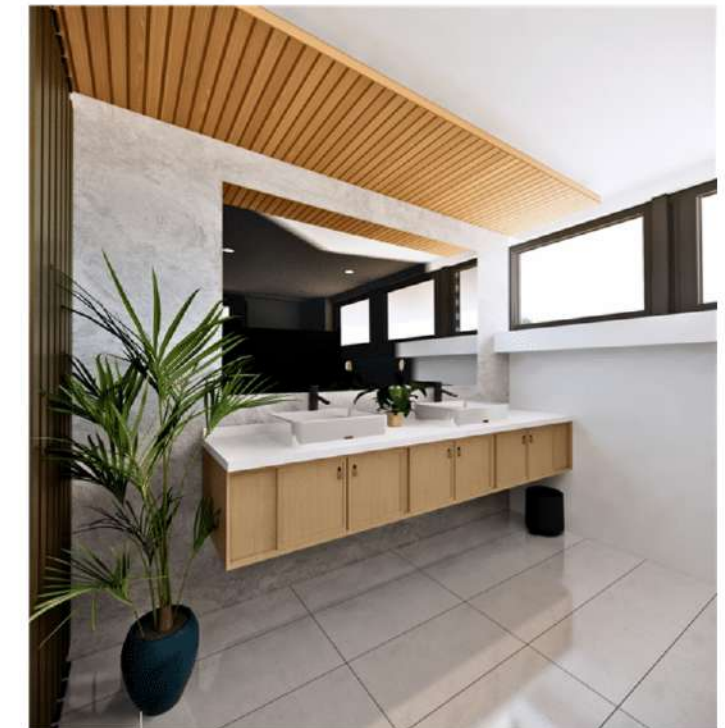
5
A-02
ELEVATION D
SCALE: 1:50 MTS

 AR. EFREN O. BELLEN JR. ARCHITECT		PROJECT TITLE/ LOCATION: EXPANSION OF THE MODERNIZATION OF DBM REGION 5 FACILITIES PHASE 2 DBM COMPOUND, REGIONAL GOVERNMENT CENTER, LEGAZPI CITY	APPROVED BY: FRANCIS C. BAUTISTA Acting Director IV Department of Budget & Management-Region V	RA 9266 Sec. 33 THESE DRAWINGS AND SPECIFICATIONS AND OTHER CONTRACT DOCUMENTS DULY SIGNED, STAMPED OR SEALED AS INSTRUMENT OF SERVICES, ARE THE INTELLECTUAL PROPERTY AND DOCUMENT OF THE ARCHITECT. WHETHER THE OBJECT FOR WHICH THEY ARE MADE EXECUTED OR NOT, IT SHALL BE UNLAWFUL FOR ANY PERSON TO DUPLICATE OR TO MAKE COPIES OF SAID DOCUMENTS FOR USE IN THE REPETITION OF AND FOR OTHER PROJECTS OR THE BUILDINGS, WHETHER EXECUTED PARTLY OR IN WHOLE, WITHOUT THE WRITTEN CONSENT OF THE ARCHITECT OR AUTHOR OF SAID DOCUMENTS.	SHEET CONTENT AS SHOWN	SHEET NO. A 02
PRC	46914	PTR	2936234			
VALIDITY	OCT.12.2025	DATE	JAN.18.2024			
TIN	733-679-410	PLACE	BACACAY			



1
A-05

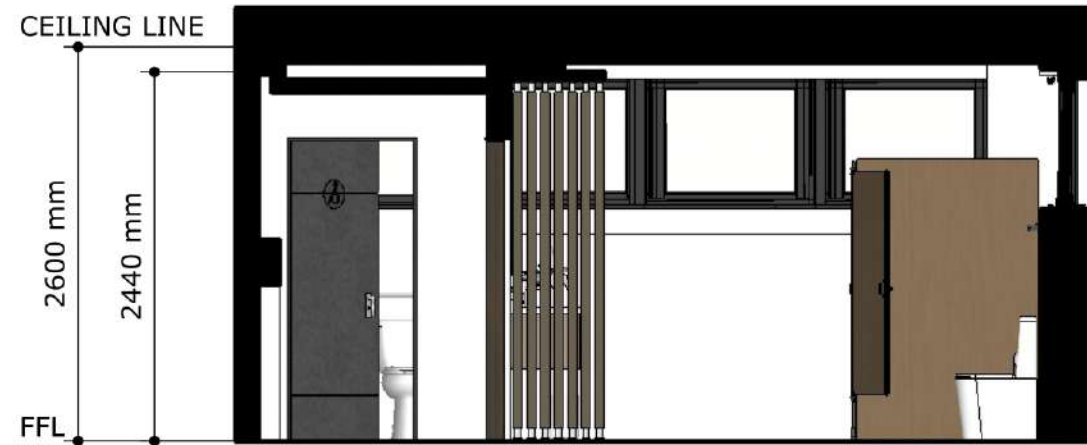
SECOND FLOOR COMMON ROOM
FLOOR PLAN
SCALE: 1:50 MTS



2
A-05

SECOND FLOOR COMMON ROOM
INTERIOR PERSPECTIVE
SCALE: NTS

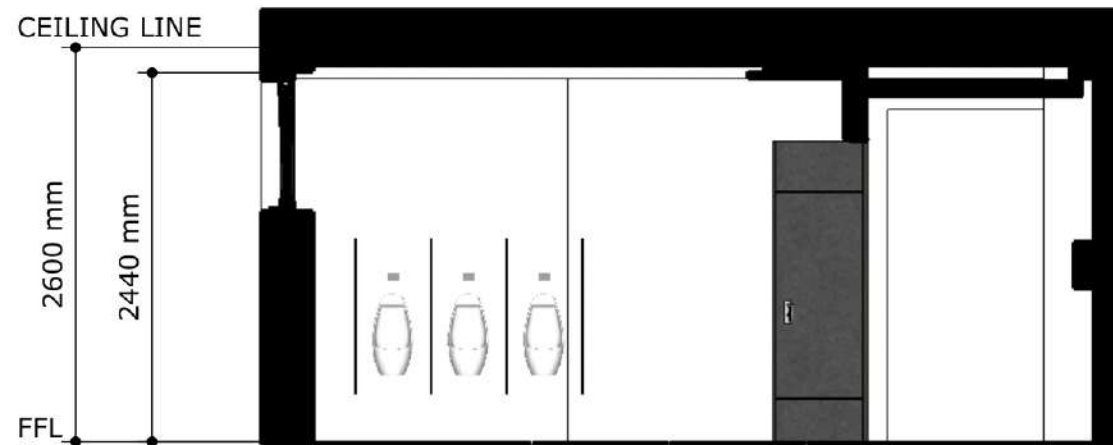
 AR. EFREN O. BELLEN JR. ARCHITECT		PROJECT TITLE/ LOCATION:	APPROVED BY:	RA 9266 Sec. 33	SHEET CONTENT	SHEET NO.
		EXPANSION OF THE MODERNIZATION OF DBM REGION 5 FACILITIES PHASE 2 DBM COMPOUND, REGIONAL GOVERNMENT CENTER, LEGAZPI CITY	 FRANCIS C. BAUTISTA Acting Director IV Department of Budget & Management-Region V	THESE DRAWINGS AND SPECIFICATIONS AND OTHER CONTRACT DOCUMENTS DULY SIGNED, STAMPED OR SEALED AS INSTRUMENT OF SERVICES, ARE THE INTELLECTUAL PROPERTY AND DOCUMENT OF THE ARCHITECT, WHETHER THE OBJECT FOR WHICH THEY ARE MADE EXECUTED OR NOT. IT SHALL BE UNLAWFUL FOR ANY PERSON TO DUPLICATE OR TO MAKE COPIES OF SAID DOCUMENTS FOR USE IN THE REPETITION OF AND FOR OTHER PROJECTS OR THE BUILDINGS, WHETHER EXECUTED PARTLY OR IN WHOLE, WITHOUT THE WRITTEN CONSENT OF THE ARCHITECT OR AUTHOR OF SAID DOCUMENTS.	AS SHOWN	A 05
PRC 46914	PTR 2936234					
VALIDITY OCT. 12, 2025	DATE JAN. 18, 2024					
TIN 733-679-410	PLACE BACACAY					



1 **ELEVATION A**
A-06 SCALE: 1:50 MTS



2 **ELEVATION B**
A-06 SCALE: 1:50 MTS



3 **ELEVATION C**
A-06 SCALE: 1:50 MTS



4 **ELEVATION D**
A-06 SCALE: 1:50 MTS

 AR. EFREN O. BELLEN JR. ARCHITECT		PROJECT TITLE/ LOCATION:	APPROVED BY:	RA 9266 Sec. 33	SHEET CONTENT	SHEET NO.
		EXPANSION OF THE MODERNIZATION OF DBM REGION 5 FACILITIES PHASE 2 DBM COMPOUND, REGIONAL GOVERNMENT CENTER, LEGAZPI CITY	 FRANCISCO BAUTISTA Acting Director IV Department of Budget & Management-Region V	THESE DRAWINGS AND SPECIFICATIONS AND OTHER CONTRACT DOCUMENTS DULY SIGNED, STAMPED OR SEALED AS INSTRUMENT OF SERVICES, ARE THE INTELLECTUAL PROPERTY AND DOCUMENT OF THE ARCHITECT. WHETHER THE OBJECT FOR WHICH THEY ARE MADE EXECUTED OR NOT, IT SHALL BE UNLAWFUL FOR ANY PERSON TO DUPLICATE OR TO MAKE COPIES OF SAID DOCUMENTS FOR USE IN THE REPETITION OF AND FOR OTHER PROJECTS OR THE BUILDINGS, WHETHER EXECUTED PARTLY OR IN WHOLE, WITHOUT THE WRITTEN CONSENT OF THE ARCHITECT OR AUTHOR OF SAID DOCUMENTS.	AS SHOWN	A 06
PRC	46914	PRK	2936234			
VALIDITY	OCT.12.2025	DATE	JAN.18.2024			
TIN	733-679-410	PLACE	BACACAY			