

2021 PROPOSED NATIONAL BUDGET

*Reset, Rebound, and Recover:
Investing for Resiliency and Sustainability*

The PhP4.506 trillion proposed Cash Budget for Fiscal Year 2021 will focus on containing the spread and mitigating the effects of the virus while restarting the economy to help the nation reset, rebound, and recover from the crisis. It will sustain and strengthen efforts to bolster the health care system, ensure food security, invest in physical and digital infrastructure, and provide support and protection for the most vulnerable and affected sectors of society.

2020 Budget	2021 Proposed Budget	Growth
PhP4.100 T (21.7% of GDP)	PhP4.506 T (21.8% of GDP)	9.9%

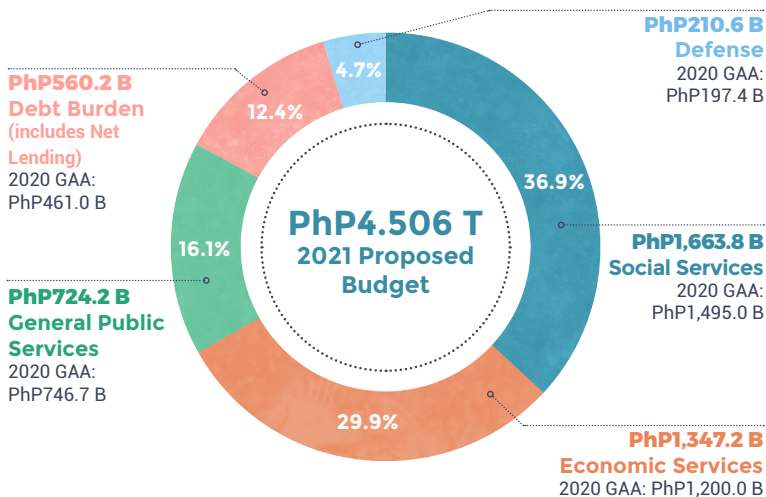
Fiscal Program, 2020-2022



Particulars (in billion Pesos)	Projections		
	2020	2021	2022
Revenues	2,519.8	2,717.4	3,034.8
% of GDP	13.4	13.2	13.3
Disbursements	4,335.2	4,467.0	4,676.8
% of GDP	23.0	21.6	20.5
Fiscal Balance	(1,815.4)	(1,749.6)	(1,642.1)
% of GDP	-9.6	-8.5	-7.2

Note: Figures are consistent with the growth assumptions and fiscal targets adopted by the DBCC on July 28, 2020.

Budget Dimensions by Sector



Note: Figures may not add up due to rounding off.



Top 10 Departments

1

Education

(includes DepEd, SUCs, CHED, and TESDA)

PhP754.4 B

2020 GAA: PhP650.2 B

2

Department of Public Works and Highways

PhP667.3 B

2020 GAA: PhP438.9 B

3

Department of the Interior and Local Government

PhP246.1 B

2020 GAA: PhP234.5 B

4

Department of National Defense

PhP209.1 B

2020 GAA: PhP179.5 B

5

Department of Health^{1/}

PhP203.1 B

2020 GAA: PhP177.7 B

6

Department of Social Welfare and Development

PhP171.2 B

2020 GAA: PhP366.5 B

7

Department of Transportation

PhP143.6 B

2020 GAA: PhP84.2 B

8

Department of Agriculture

PhP66.4 B

2020 GAA: PhP70.8 B

9

The Judiciary

PhP43.5 B

2020 GAA: PhP41.2 B

10

Department of Labor and Employment

PhP27.5 B

2020 GAA: PhP23.5 B

Note: 2020 GAA figures already reflect adjustments made to redirect funds for COVID-19 response.

^{1/} Includes PhP71.4 billion budget for the Philippine Health Insurance Corporation

2021 Spending Priorities



RESET

Responding to the Pandemic

PhP203.1 B

Universal Health Care

Of which:

National Health Insurance Program (PhilHealth)	PhP71.4 B
Assistance to Indigent Patients	PhP17.3 B
Human Resources for Health Program	PhP16.6 B
Health Facilities Enhancement Program	PhP4.8 B
Procurement of Personal Protective Equipment	PhP2.7 B
Provision for COVID-19 Vaccine	PhP2.5 B
Purchase of GeneXpert Cartridges	PhP1.0 B
Provision for COVID-19 Surveillance	PhP0.05 B

REBOUND

Reviving Infrastructure Development

PhP1.108 T

Build, Build, Build (5.4% of GDP)

Of which:

DPWH

Network Development Program	PhP124.6 B
Flood Management Program	PhP101.6 B
Asset Preservation Program	PhP47.8 B

DOTr

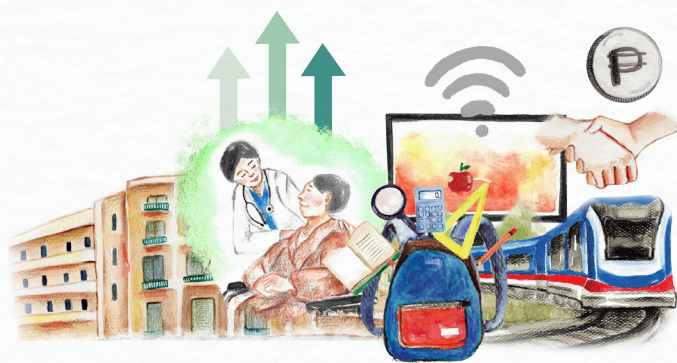
Rail Transport	PhP106.3 B
Land Public Transportation	PhP16.2 B
Maritime Infrastructure	PhP0.2 B

PhP21.4 B

Expenditures for MITHI^{2/}

Of which:

Adapting to the Post-COVID Life	PhP7.6 B
Telecommunication Infrastructure	PhP4.7 B
Education	PhP2.0 B
Defense and Justice	PhP556 M
Labor	PhP112 M
Industry	PhP90 M
Social Protection	PhP39 M
Transportation	PhP35 M
Health	PhP22 M



RECOVER

Adapting to the Post-Pandemic Life

Food Security

Irrigation Services (NIA)	PhP31.5 B
DA's National Commodity Programs	PhP25.1 B
Rice Competitiveness Enhancement Program	PhP10.0 B
Assistance to Farmers ^{3/}	PhP2.1 B

Industry and Livelihood

Tulong Panghanapbuhay sa Ating Disadvantaged/Displaced Workers and Government Internship Program	PhP9.9 B
Emergency Repatriation Program	PhP6.2 B
Training for Work Scholarship Program	PhP3.6 B
MSME Development Program	PhP2.3 B

Social Protection

Pantawid Pamilyang Pilipino Program	PhP113.8 B
Social Pension for Indigent Senior Citizens	PhP23.2 B
Financial Assistance (Protective Services for Individuals and Families in Difficult Circumstances)	PhP12.0 B

Education

State Universities and Colleges	PhP83.3 B
Universal Access to Quality Tertiary Education	PhP47.1 B
Education Assistance and Subsidies ^{4/}	PhP28.0 B
Basic Education Facilities	PhP24.1 B
DepEd Computerization Program	PhP9.0 B

Governance and Crosscutting Concerns

National Task Force to End Local Communist Armed Conflict	PhP19.1 B
Philippine Identification System	PhP4.1 B



^{2/}Medium-Term Information and Communications Technology Harmonization Initiative (MITHI)

^{3/}To be sourced from excess revenues from rice tariffs to support the Crop Diversification Program and Expanded Crop Insurance Program on Rice

^{4/}Includes the Government Assistance to Students and Teachers in Private Education (DepEd), Student Financial Assistance Programs (CHED), and Private Education Student Financial Assistance (TESDA)