




2018 People's Implemented Budget

A Budget that Reforms and Transforms

The 2018 National Budget, designed to be “a Budget that reforms and transforms,” focused on implementing reforms that would achieve for Filipinos a life that is strongly-rooted, comfortable, and secure. It aimed to build a strong foundation that would lead to positive and lasting change for the benefit of the Filipino nation and people.

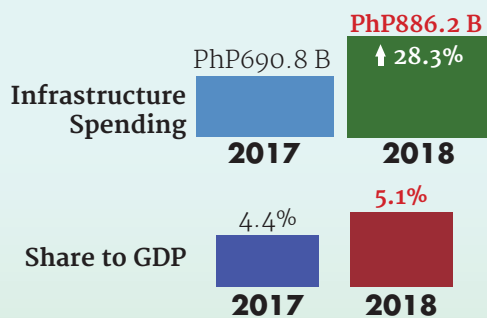
Promises Fulfilled

-  Universal Access to Tertiary Education
-  Free Irrigation services for all
-  Doubling the salaries of Military and Uniformed Personnel




Accelerated level of Infrastructure Investments

 Build, Build, Build Program



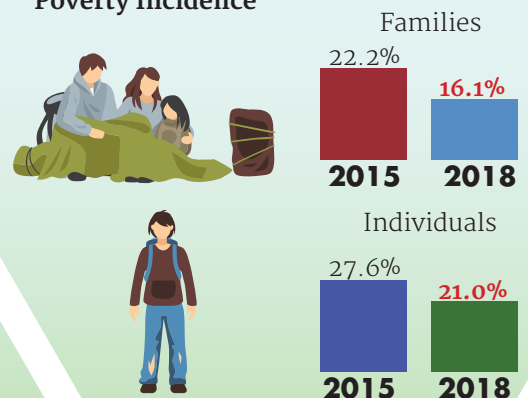
Effective poverty-reducing Social Services

 Increased allocation for education, health, employment, housing, and social protection

2018 Budget

PHP1.43T

Poverty Incidence



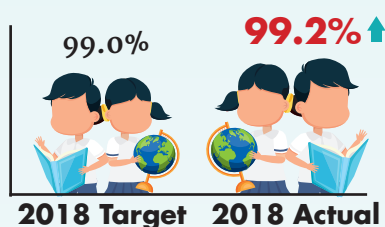
Performance of Select Departments

EDUCATION

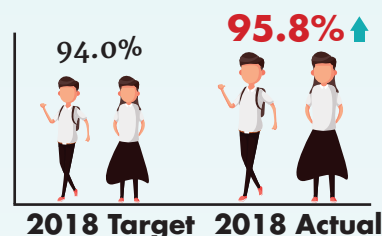
Department of Education

Retention and Completion Rate

Elementary Retention Rate



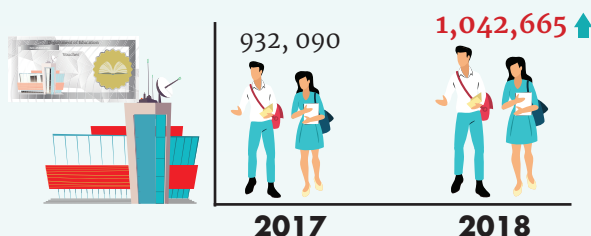
Junior High Retention Rate



The department also achieved its 2018 completion rate targets with **97.2** percent of elementary students and **88.4** percent of Junior High School students completing the SY 2018-2019.

Government Assistance and Subsidies

Education Servicing Contracting (ESC)



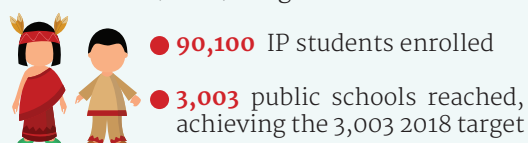
ESC is a partnership program of the DepEd with private junior high schools to decongest overcrowded public junior high schools

Inclusive Basic Education

Arabic Language and Islamic Values Education (ALIVE) program



National Indigenous Peoples Education (IPED) Program



Commission on Higher Education

Universal Access to Quality Tertiary Education (UAQTE)

- **1,184,857** students in SUCs and LUCs qualified for free education
- **13,809** students were from Conditional Cash Transfer beneficiary households
- **114** PWD student beneficiaries
- **36,504** graduating students benefitted from Tertiary Education Subsidy

Students Financial Assistance Programs (StuFAPs)

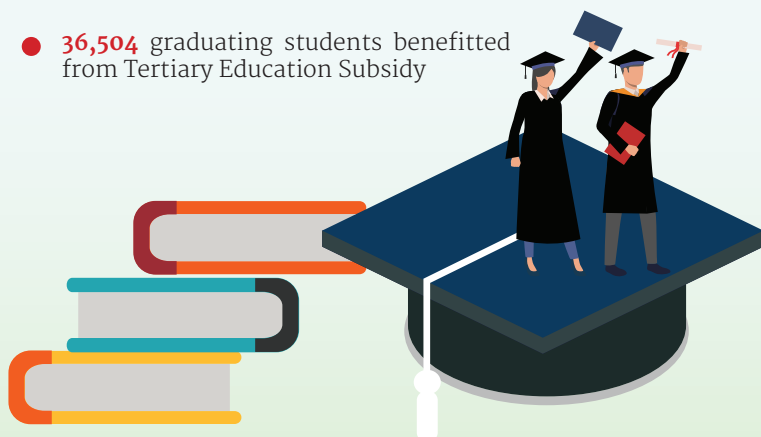
- **374,538** student beneficiaries were covered, including **345,268** deserving student beneficiaries of the Tulong Dunong Program;
- **28,717** beneficiaries of the regular StuFAPs
- **553** dependents and children of sugarcane industry workers and small farmers benefitted

K to 12 Transition Program

- **7,499** grants awarded under the K to 12 Transition Program

Philippine-California Advanced Research Institute (PCARI)

- **25** high-end Research and Development (R&D) outputs were promoted and supported



Technical Education and Skills Development Program

Scholarship Programs

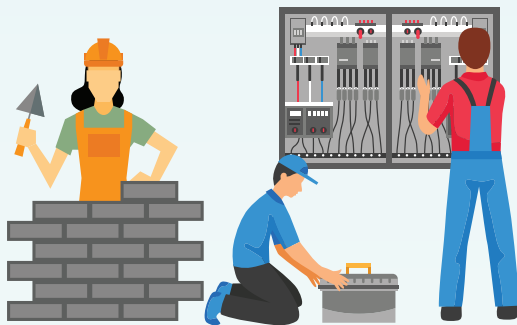


- **404,914** graduates equivalent to **174.1** percent accomplishment rate

Technology Institutions



- **261,094** graduates equivalent to **112.6** percent accomplishment rate



Training Assistance



- **8,229** training institutions/ establishments/assessment centers were assisted, which is **42.6** percent more than the target of 5,771

HEALTH

Department of Health

National Health Insurance Program

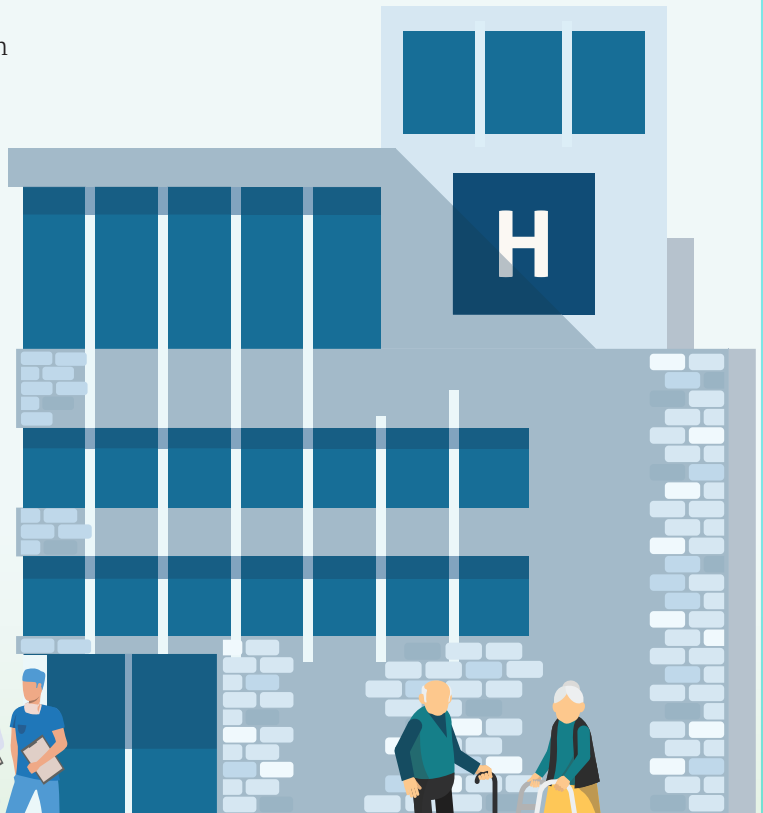
Philippine Health Insurance Corporation allocation covered:

- **15.48** million indigent families listed under the National Household Targeting System;
- **5.98** million senior citizens;
- **443,933** Point of Service patients;
- **23,062** families identified under the PAMANA Program; and
- **20,661** families identified under the Bangsamoro Program

Medical Assistance

Social Health Protection Program

- **1,243,403** patients were assisted, surpassing the target of 600,000 patients



SOCIAL PROTECTION

Department of Social Welfare and Development

Protective Program for Individuals and Families and Especially Difficult Circumstances

Conditional Cash Transfer (CCT) served:

- **4,178,828** households through educational and health allowances
- **3,949,855** households under the regular CCT
- **228,973** households under the modified CCT

Alternative Family Care Program aided:

- **1,738** children

Protective Services Program helped:

- **825,829** beneficiaries

Comprehensive Program for Street Children, Street Families and *Badjajs* benefitted:

- **4,582** street families along with **6,263** street children



Department of Labor and Employment

Employment Assistance/Opportunities

Employment Facilitation Program

Special Program for Employment of Students (SPES) and the JobStart Program assisted:

- **187,464** youths, exceeding the target of 186,850

Public Employment Service Offices and Private Recruitment and Placement Agencies supported:

- Around **2.3 million** qualified applicants, who availed of various employment opportunities



Livelihood Assistance/Skills Training

Workers Protection and Welfare Program

On-Site Services for OFWs program aided:

- **858,667** OFWs

TUPAD* Program helped:

- **370,230** beneficiaries

Family Welfare Program benefitted:

- **350,246** workers

Child Labor Prevention and Elimination Program assisted:

- **104,233** children

Government Internship Program served:

- **17,999** youths

Financial Awareness Seminar and Small Business Management Training instructed:

- **4,630** OFWs

K to 12 DOLE Adjustment Measures Program benefitted:

- **332** students

PEACE AND ORDER




Department of Interior and Local Government

Reduction in the National Index Crime Rate

Crime Prevention and Suppression Program

- **16,185,198** foot and mobile patrol operations
- **6.16** percent reduction in the National Index Crime Rate



Improved Crime Statistics		
Crime Volume	Crime Clearance Efficiency	Crime Solution Efficiency
 1,040,987 1,325,789	 75.50% 64.26%	 62.51% 52.63%

■ July 2016–June 2018

■ July 2014–June 2016

Comprehensive Local Integration Program (CLIP)

- **1,029** former rebels (FRs) received livelihood and other assistance
- **163** FRs also benefitted from the expanded CLIP (eCLIP)



Strengthening Local Institutions

- **42,029** Barangay Anti-Drug Abuse Councils organized/reorganized nationwide (including ARMM)
- **1,706** Peace and Order Councils (POCs) implemented their 3-year Peace and Order and Public Safety (POPS) Plan 2017–2019



INFRASTRUCTURE

Department of Public Works and Highways

Road Transport (Roads and Bridges)

Asset Preservation Program

- **692.368** kilometers of roads

Network Development Program

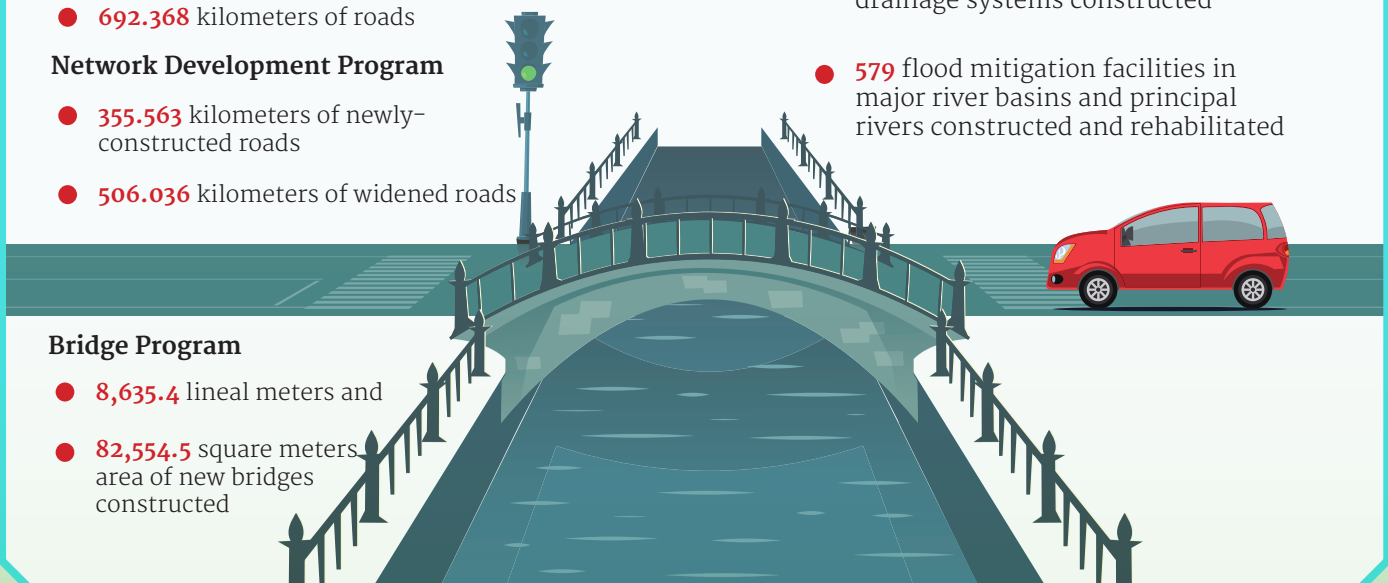
- **355.563** kilometers of newly-constructed roads
- **506.036** kilometers of widened roads

Bridge Program

- **8,635.4** lineal meters and
- **82,554.5** square meters area of new bridges constructed

Flood Management Program

- **2,466** flood mitigation structures and drainage systems constructed
- **579** flood mitigation facilities in major river basins and principal rivers constructed and rehabilitated



Department of Transportation

Aviation Sector

Communication, Navigation, Surveillance/Air Traffic Management (CNS/ATM) systems installation

- 10 radars covering 100 percent of the Philippine airspace

Airport Development and Improvement

- Mactan-Cebu International Airport Passenger Terminal 2
- Maasin Airport
- New Bohol-Panglao International Airport
- Development of Lal-Lo International Airport
- Completion of the rehabilitation of Virac Airport Passenger Terminal



Land Public Transportation Sector

- Parañaque Integrated Terminal Exchange (PITx)

PITx serves as a hub for buses, jeepneys, and other public utility vehicles headed for areas south of Metro Manila, including the provinces of Cavite and Batangas, and vice versa



Maritime Sector

- Cavite Gateway Terminal

The terminal facilitates efficient transport of cargo goods from Metro Manila to Cavite and other port facilities in Luzon through the roll-on, roll-off (RoRo) operations

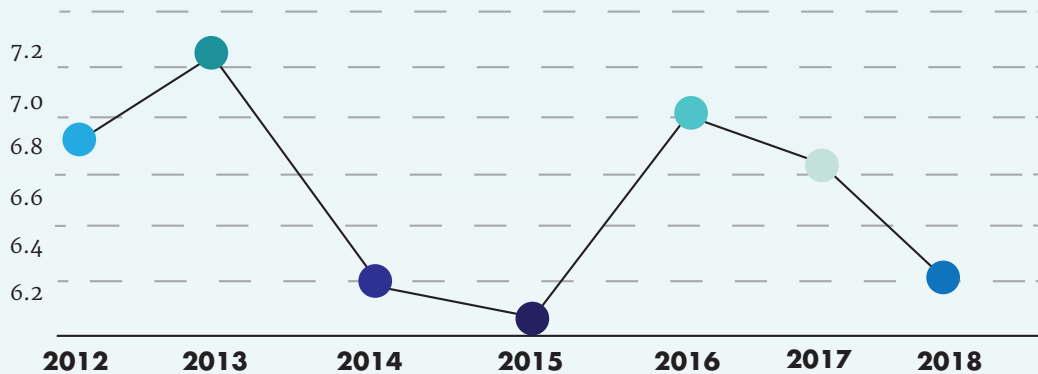


Macroeconomic and Fiscal Performance

Macroeconomic Performance

Gross Domestic Product (GDP)

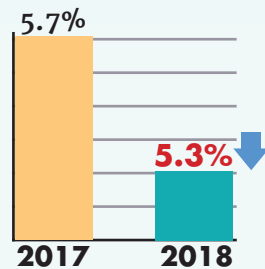
The Philippines maintained its GDP above 6.0 percent for the seventh consecutive years, settling at **6.2** percent despite the external factors and uncontrolled phenomena such as devastating typhoons.



The country remained ahead of other Southeast Asian countries such as Indonesia, Thailand, and Malaysia.

Unemployment and Underemployment

- Unemployment rate decreased
- Underemployment outside the National Capital Region also registered at **17.7%** in 2018



Inflation Rate

- Inflation averaged at **5.2** percent in 2018, caused by tightness in domestic food supply, higher global oil prices, excise tax on sweetened beverages and tobacco, with some demand impulse. However, inflation started to decelerate in the last quarter of the year

Oil Price

- Per-barrel price of Dubai crude averaged **US\$69.42** in 2018, near the high-end of the adjusted assumption of US\$55.00–70.00



Foreign Exchange Rate

- Philippine peso-dollar exchange rate averaged at **PhP52.66/US\$1** in 2018, within the adjusted assumption of PhP50.00–53.00/US\$1



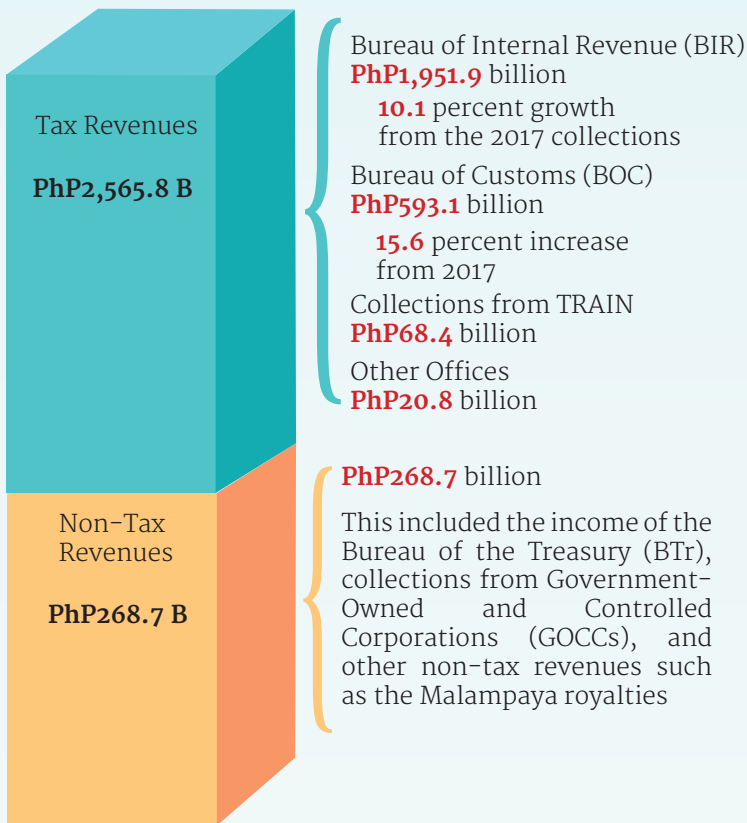
Importation

- Imports of goods expanded to **US\$100.7** billion in 2018, from only US\$92 billion in 2017
- Increase in imports indicates that the domestic economy is strong, especially when these imports consist mainly of productive assets such as machinery, which will improve productivity in the long term



Fiscal Performance

Sources of Revenues

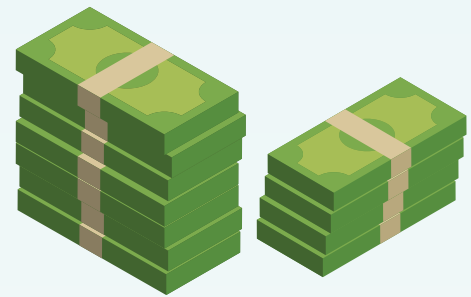


Note: Collections from BIR and BOC included the amount from TRAIN

Borrowings Performance

- National Government Financing
PhP897.6 billion
7.6 percent lower compared with the revised program (P971.9 billion)

Gross financing achieved a financing mix of **66:34** in favor of domestic sources in line with managing foreign exchange risk exposure even as the government sought to further diversify foreign financing



Disbursement Performance

National Government disbursements posted a **20.7** percent annual growth rate in 2018, the highest since 1991, to reach **PhP3,408.4** billion

Particulars	Program	Actual
Current Operating Expenditures	2,415.8	2,440.5
Personnel Services	961.9	987.2
Maintenance and Other Operating Expenses	517.5	525.6
Subsidy	137.7	136.7
Allotment to LGUs	425.2	420.2
Interest Payments	354.0	349.2
Tax Expenditure	19.5	21.6
Capital Outlays	940.4	963.1
Infrastructure/Other Capital Outlays	775.4	803.6
Equity	7.6	4.0
Capital Transfers to LGUs	157.5	155.5
Net Lending	13.8	4.9
Total	3,370.0	3,408.4



Produced by the Department of Budget and Management
Budget Information and Training Service
December 2019



(02) 8657 - 3300



/DBMgovph



@DBMgovph



www.dbm.gov.ph