

2021 NATIONAL BUDGET

Reset, Rebound, and Recover:
Investing for Resiliency and Sustainability

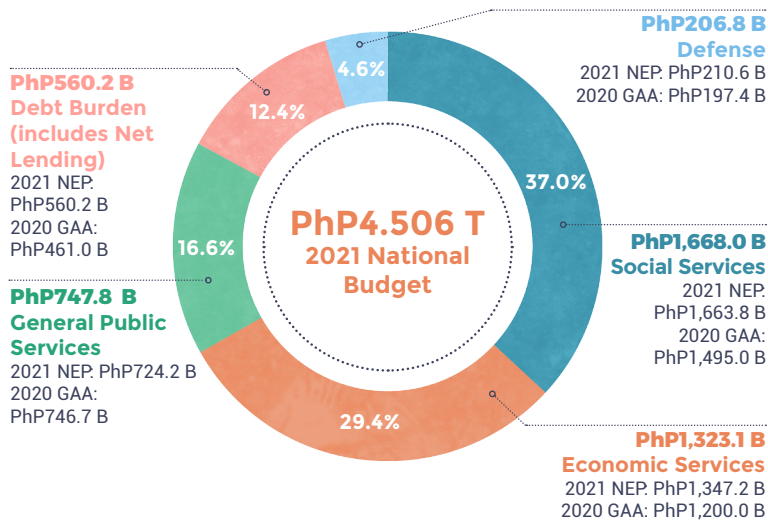


On December 28, 2020, President Rodrigo Duterte signed into law the PhP4.506 trillion National Budget for Fiscal Year 2021, or the 2021 General Appropriations Act (GAA). This Budget continues to strengthen government efforts to respond to the Coronavirus Disease 2019 (COVID-19) pandemic and support initiatives for national economic recovery.

Budget Comparison, 2020 vs. 2021



Budget Dimensions by Sector



Note: Figures may not add up due to rounding off.

Budget Dimensions by Expense Class (in billion Pesos)

Particulars	2020 GAA	2021 NEP	2021 GAA
Personnel Services	1,184.3	1,316.0	1,299.3
Capital Outlays	815.4	920.5	896.9
Allotment to LGUs*	782.7	837.8	844.6
Maintenance and Other Operating Expenses**	644.5	699.4	732.1
Debt Burden	461.0	560.2	560.2
Support to GOCCS	197.7	157.5	158.4
Tax Expenditures	14.5	14.5	14.5
TOTAL	4,100.0	4,506.0	4,506.0

*Inclusive of Internal Revenue Allotment, Special Shares of LGUs in the Proceeds of National Taxes, Local Government Support Fund, MMDA and Other Financial Assistance to LGUs, BARMM-Block Grant

**Inclusive of Financial Expenses

Note: Figures may not add up due to rounding off.

Top 10 Departments

1 Education
(includes DepEd, SUCs, CHED, and TESDA)
PhP751.7 B
2021 NEP: PhP754.4 B
2020 GAA (Adjusted): PhP659.3 B

2 Department of Public Works and Highways
PhP695.7 B
2021 NEP: PhP667.3 B
2020 GAA (Adjusted): PhP431.2 B

3 Department of the Interior and Local Government
PhP249.3 B
2021 NEP: PhP246.1 B
2020 GAA (Adjusted): PhP236.0 B

4 Department of Health^{1/}
PhP210.2 B
2021 NEP: PhP203.1 B
2020 GAA (Adjusted): PhP183.4 B

5 Department of National Defense
PhP205.8 B
2021 NEP: PhP209.1 B
2020 GAA (Adjusted): PhP179.7 B

6 Department of Social Welfare and Development
PhP176.9 B
2021 NEP: PhP171.2 B
2020 GAA (Adjusted): PhP366.6 B

7 Department of Transportation
PhP87.9 B
2021 NEP: PhP143.6 B
2020 GAA (Adjusted): PhP84.2 B

8 Department of Agriculture
PhP71.0 B
2021 NEP: PhP66.4 B
2020 GAA (Adjusted): PhP75.8 B

9 The Judiciary
PhP45.3 B
2021 NEP: PhP43.5 B
2020 GAA (Adjusted): PhP41.2 B

10 Department of Labor and Employment
PhP37.1 B
2021 NEP: PhP27.5 B
2020 GAA (Adjusted): PhP36.6 B

^{1/} Includes PhP71.4 billion budget of PhilHealth



2021 SPENDING PRIORITIES

RESET

Responding to the Pandemic

PhP221.1 B Health Sector Budget

Regular Health Programs:

National Health Insurance Program (PhilHealth)	PhP71.4 B
Medical Assistance to Indigent Patients	PhP17.0 B
Human Resources for Health Program	PhP16.6 B
Health Facilities Enhancement Program	PhP14.7 B*
Family Health, Immunization, Nutrition, and Responsible Parenting	PhP12.2 B

New Health Programs/Projects for COVID-19 Response:

Provision for:

Personal Protective Equipment	PhP4.7 B
COVID-19 Vaccine	PhP2.5 B
COVID-19 GeneXpert Cartridges	PhP1.0 B

Foreign-assisted Projects:

Health Systems Enhancement to Address and Limit COVID-19 (ADB)	PhP4.2 B
COVID-19 Emergency Response Project (World Bank)	PhP1.1 B

Research and Development:

Establishment of the Virology Science and Technology Institute of the Philippines	PhP283 M
Disease Surveillance and Monitoring of COVID-19 and Other Similar Respiratory Infections	PhP51.56 M

*Inclusive of PhP5.52 billion unprogrammed fund for the construction of primary care facilities and PhP1.4 billion for medical infrastructure projects funded by ADB and World Bank

REBOUND

Reviving Infrastructure Development

DPWH

Core Programs (of which):	PhP317.7 B
Network Development Program	PhP124.5 B
Flood Management Program	PhP101.8 B
Asset Preservation Program	PhP66.0 B
Bridge Program	PhP25.4 B

DOTR

Rail Transport (of which):	PhP47.7 B
North-South Commuter Railway System	PhP21.1 B
Metro Manila Subway Project Phase 1	PhP11.2 B
Subsidy for MRT 3	PhP7.0 B
Land Public Transportation	PhP12.6 B
Maritime Infrastructure	PhP562 M

RECOVER

Adapting to the Post-Pandemic Life

Food Security

Irrigation Services (NIA)	PhP31.7 B
National Rice Program	PhP15.5 B
Rice Competitiveness Enhancement Program	PhP10.0 B

Industry and Livelihood

Livelihood and Emergency Employment Program	PhP20.4 B
Training for Work Scholarship Program	PhP4.1 B
MSME Development Program	PhP2.4 B
Tulong Trabaho Scholarship Program	PhP1.0 B

Education

Basic Education - Learning Continuity Plan	PhP17.0 B
DepEd Computerization Program	PhP5.9 B

Social Protection

Pantawid Pamilyang Pilipino Program	PhP106.8 B
Social Pension for Indigent Senior Citizens	PhP23.5 B
Sustainable Livelihood Program	PhP4.3 B

Governance

Philippine Identification System	PhP4.3 B
Community-Based Monitoring System	PhP85 M



Produced by: Department of Budget and Management
Budget Information and Training Service
www.dbm.gov.ph