



General Headquarters, AFP

Legal Basis

General Headquarters, AFP

- **Commonwealth Act No. 1** (December 21, 1935), National Defense Act, created the Central General Staff, later named Armed Forces General Staff.
- **Executive Order No. 389** (December 23, 1950) transformed the Armed Forces of the Philippines (AFP) into the General Headquarters-Armed Forces of the Philippines (GHQ-AFP).
- **Executive Order No. 292** (July 25, 1987), Administrative Code of 1987, identified the structure of the AFP to consist of GHQ, the Major Services and other units, services and commands of the AFP.

Armed Forces of the Philippines Medical Center (AFPMC)

- **Commonwealth Act No. 1** (December 21, 1935), National Defense Act, created the AFP Medical Service.
- **Special Order No. 512 HPA** (1946) created the Victoriano Luna General Hospital.
- **General Order No. 389 GHQ-AFP** (May 7, 1970) renamed the Victoriano Luna General Hospital to V. Luna Medical Center.
- **General Order No. 258** (September 26, 1975) renamed the V. Luna Medical Center to Armed Forces of the Philippines Medical Center (AFPMC).

Philippine Military Academy (PMA)

- **Commonwealth Act No. 1** (December 21, 1935), National Defense Act, established the Philippine Military Academy (PMA).

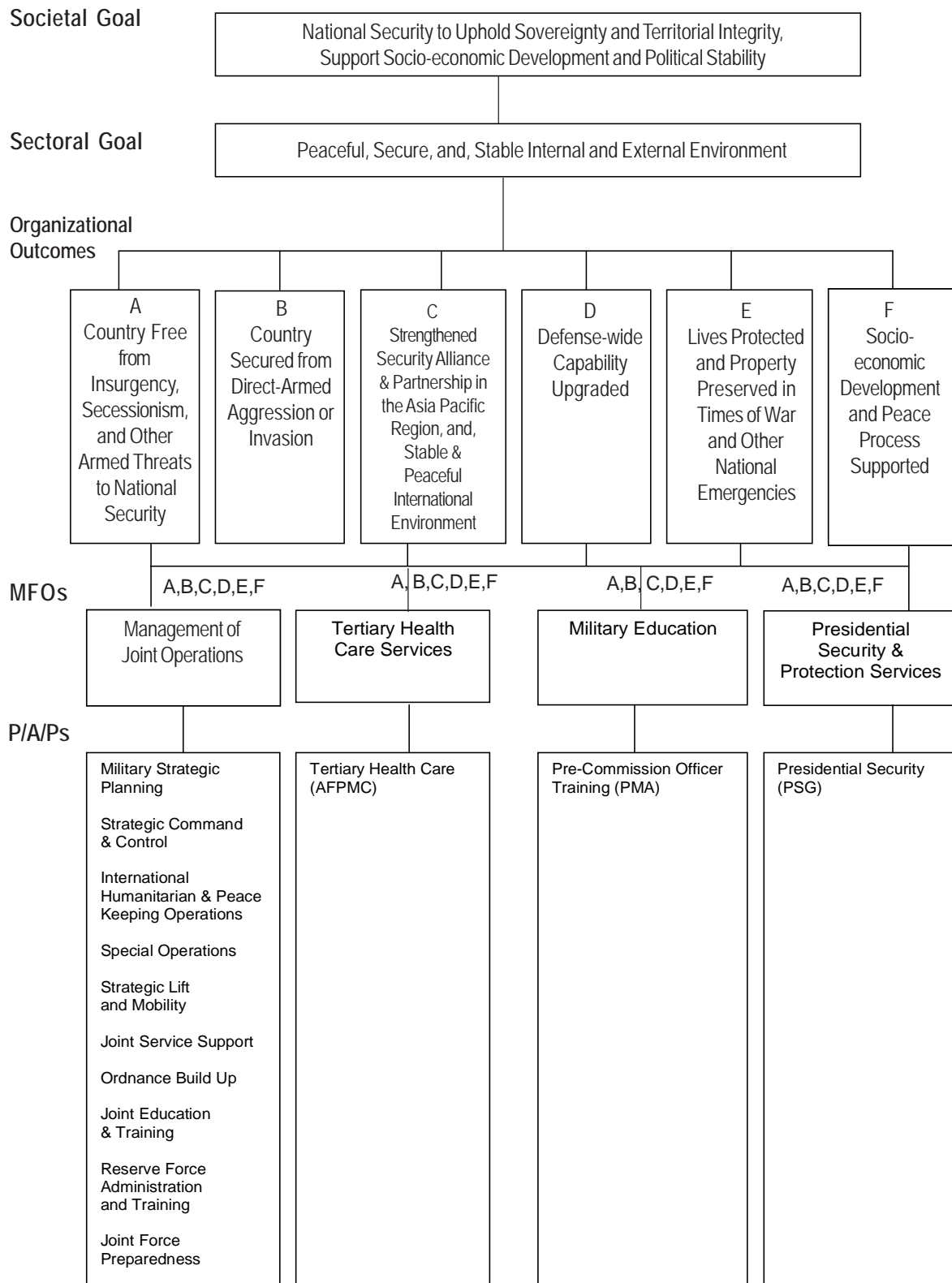
Presidential Security Group (PSG)

- **General Order No. 212 GHQ, AFP** (October 22, 1971) created the Presidential Security Command (PSC) as a unified command of the AFP.
- **General Order No. 60, GHQ-New Armed Forces of the Philippines (NAFP)** (March 8, 1986) deactivated the PSC and activated the Presidential Security Group (PSG) as one of the support units of the NAFP.

Mandate

- GHQ** : The GHQ is tasked to exercise the command, direction of all AFP units "to protect and secure the sovereignty of the state and integrity of the national territory."
- AFPMC** : The AFPMC provides comprehensive quality tertiary healthcare services to AFP personnel, dependents, and authorized civilians through consultation and treatment in all health care fields of specialties; and complete diagnostic, therapeutic, and ancillary services.
- PMA** : The PMA is mandated to instruct, train, and develop cadets to possess the character, the broad and basic military skills, and the education essential to the successful pursuit of a progressive military career.
- PSG** : The PSG is tasked to provide security to the President of the Republic of the Philippines. It secures and protects the members of the First Family; visiting heads of States and Governments; the President's residences, Offices, and places of presidential engagements and its environs.

LOGICAL FRAMEWORK (GHQ)



PERFORMANCE MEASURES AND TARGETS
(Amounts in Thousand Pesos)

| Particulars | FY 2008 | FY 2009 | FY 2010 |
|--|--------------------------|------------------|------------------|
| | Actual/Amount | Target/Amount | Target/Amount |
| MFO 1 | | | |
| Management of Joint Operations | 11,918,806 ^{1/} | 3,603,936 | 3,642,337 |
| Readiness level | 68% | 68% | 68% |
| No. of joint operations | 4,809 | 4,048 | 4,048 |
| MFO 2 | | | |
| Tertiary Health Care Services | 719,081 | 859,516 | 933,097 |
| Bed occupancy rate | 75% | 75% | 75% |
| No. of out-patient consultation | 40,755 | 40,755 | 40,755 |
| No. of bed days utilized | 438,000 | 328,500 | 438,500 |
| No of in-patient | 10,410 | 10,410 | 10,410 |
| MFO 3 | | | |
| Military Education Services | 491,638 | 542,520 | 548,464 |
| No. of cadets trained | 1,100 | 1,251 | 1,100 |
| Cadet success rate | 80% | 85% | 80% |
| MFO 4 | | | |
| Presidential Security and Protection Services | 148,420 | 163,105 | 167,412 |
| Presidential engagements | 660 | 660 | 660 |
| First Family engagements | 420 | 420 | 420 |
| Vital installations secured | 12 | 12 | 12 |
| TOTAL | 13,277,945 | 5,169,077 | 5,291,310 |

Notes:

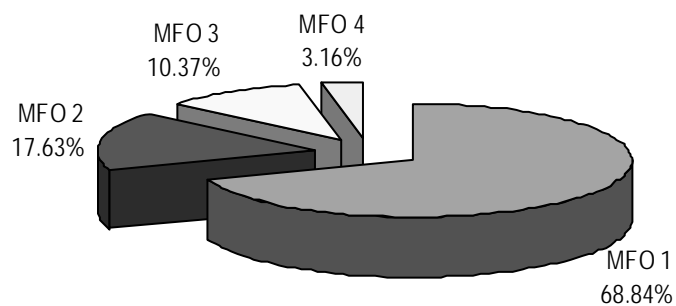
^{1/} Exclusive of Fund 170 (BCDA Fund) and Fund 172 (Armed Forces of the Philippines Modernization Trust Fund), and pension of AFP retirees in the amounts of P62.5 million, P1.350 million, and P13.292 million, inclusive of Retirement Gratuity/Terminal Leave Benefits (P2.6B).

FY 2010 MFO BUDGET

By MFO/By Expense Class (In thousand pesos)

| Particulars | PS | MOOE | Total | % Share |
|---|------------------|------------------|------------------|-------------|
| MFO 1 | | | | |
| Management of Joint Operations | 1,638,824 | 2,003,513 | 3,642,337 | 68.84% |
| MFO 2 | | | | |
| Tertiary Health Care Services | 344,289 | 588,808 | 933,097 | 17.63% |
| MFO 3 | | | | |
| Military Education Services | 433,789 | 114,675 | 548,464 | 10.37% |
| MFO 4 | | | | |
| Presidential Security and Protection Services | 35,866 | 131,546 | 167,412 | 3.16% |
| TOTAL | 2,452,768 | 2,838,542 | 5,291,310 | 100% |
| % Share | 46.35% | 53.65% | 100% | |

By MFO (Total Budget = P5,291,310,000)



By Expense Class (Total Budget = P5,291,310,000)

